



Monitoring report form for CDM project activity
(Version 09.0)

MONITORING REPORT

Title of the project activity	1.5 MW Wind Power Plant of Zenith Silk Mills at Kosha Village, in Kutch district of Gujarat state, India		
UNFCCC reference number of the project activity	8230		
Version number of the PDD applicable to this monitoring report	03		
Version number of this monitoring report	01.1		
Completion date of this monitoring report	26/05/2022		
Monitoring period number	01		
Duration of this monitoring period	15/11/2012 to 31/12/2020		
Monitoring report number for this monitoring period	N.A		
Project participants	Zenith Silk Mills Pvt Ltd		
Host Party	India		
Applied methodologies and standardized baselines	AMS ID - "Grid connected renewable electricity generation", Version 17		
Sectoral scopes	Sectoral Scope- I: Energy Industries (Renewable / Non-renewable sources)		
Amount of GHG emission reductions or net anthropogenic GHG removals achieved by the project activity in this monitoring period	Amount achieved before 1 January 2013	Amount achieved from 1 January 2013 until 31 December 2020	Amount achieved from 1 January 2021
	182	19822	0
Amount of GHG emission reductions or net anthropogenic GHG removals estimated ex ante for this monitoring period in the PDD	24,216		

SECTION A. Description of project activity

A.1. General description of project activity

The project activity involves a wind power project consisting of a Wind Turbine Generator (WTG) with installed capacity of 1.5 MW owned by Zenith Silk Mills Private Limited. The project activity mainly comprises of one numbers of S-82 Suzlon make WTG manufactured and supplied by Suzlon Energy Limited. The project has started electricity generation and the generated electricity is wheeled through the state grid through the PP’s industrial unit, located at Surat region in Gujarat. The project activity achieves a considerable amount of GHG emission reduction by displacing electricity that would have been generated from predominantly fossil fuel-based power generation in the NEWNE grid of India. The total GHG emission reduction generated in this monitoring period (15/11/2012 to 31/12/2020) is 20,004 tCO₂e.

A.2. Location of project activity

The figure representation of the project activity is shown in the figure below:



Project Location	Kosha village, Kutch district, Gujarat State of India
Coordinates of the project location	23°18'46" and 68°42'36.2"
WTG Unique Identification No.	SEL/1500/ 10-11/1953
WTG Location No.	71/P

A.3. Parties and project participants

Parties involved	Project participants	Indicate if the Party involved wishes to be considered as project participant (Yes/No)
India (Host Party)	Zenith Silk Mills Pvt Ltd (Private)	No

A.4. References to applied methodologies and standardized baselines

The approved baseline and monitoring methodology applied in the project activity is AMS-I.D Version 17

Methodology Title: Grid connected renewable electricity generation

Sectoral Scope 1: Energy industries (renewable - / non-renewable sources)

Reference:

<https://cdm.unfccc.int/methodologies/DB/W3TINZ7KKWCK7L8WTFQOQFQQH4SBK>

The baseline emission factor for an electricity system is calculated based on the tool mentioned below,

Title of Tool: "Tool to calculate the emission factor for an electricity system" Version: 02.2.1, EB 63, Annex -19

Reference: https://cdm.unfccc.int/EB/archives/meetings_11.html#63

A.5. Crediting period type and duration

Fixed crediting period of 10 years

Duration: 15/11/2012 to 14/11/2022

SECTION B. Implementation of project activity

B.1. Description of implemented project activity

The project activity incorporates installation of one number of 1500 KW S-82 Wind Turbine Generator (WTG) of Suzlon Energy Limited and then wheeling this power via NEWNE grid to industrial unit at Surat region. The WTG has got commissioned and the power generated from the project is wheeled through the NEWNE grid by signing a wheeling agreement with the state grid.

In wind energy based power generation, the kinetic energy of the wind is being converted to mechanical energy and subsequently to electric energy. The wind, when passes through the blades of the WTG, its kinetic energy is converted into mechanical energy, which rotates the wind turbine’s blades. The wind blade supplies the mechanical energy to the generator thereby producing electricity.

The technical details of the Suzlon S-82 model WTG have been provided below:

Model S - 82 - 1.5 MW, Suzlon	
PARAMETER /VALUE	PARAMETER /VALUE
Operating data	Rotor
Rated Power - 1500 kW	Type -3 Blades
Wind speed-start- 4 m/s	Rotor Orientation/ axis tilt angle/- Upwind/ 5 0 Horizontal Axis
Re-start point after high win stop- 17m.sec	Diameter- 82 m
Wind speed-stop - 20 m/s	Rotor speed at rated power - 16.30 rpm
Survival Wind Speed - 52.5 m/s	Rotor Blade Material - Epoxy bonded fibre glass Swept Area - 5281 m2 Power Regulation - Independent Electromechanical pitch system for each blade and Suzlon Flexi Slip System
Gear Box	Rotor
Type1 Planetary stage and 2 helical stage	Rated Power - 1500 kW
Ratio1:95.09 & 1:95. 24	Rated Voltage - 690 V AC
Power1650 kW	Frequency - 50 Hz
Material for gear box housing Cast Iron-GGG 40.3	Speed range for constant power with Suzlon-FLEXISLIP - 1500-1750 rpm
Generator - Suzlon Make Generators	Speed range for operation with Suzlon-FLEXISLIP - 1545 rpm
Type - Single Speed induction generator with slip rings, variable rotor resistance via Suzlon Flexi Slip System Speed at rated power and shortcut - 1511 rpm Enclosure (Generator) - IP 54 Enclosure (Slip Ring unit)	Full load power factor - 0.92 Full load current -1365 A Pole - 4 Insulation - Class H
Tower	Braking System
Type - Tubular Tower made of welded steel plates	Brake Type - Hydraulic disc brake activated by hydraulic pressure + mechanical rotor lock activated by hydraulic pressure
Tower shell plate material - High Tensile	Brake disc - Steel disc mounted on high speed

steel – S355 JRG2 as per IS2602 Gr. B	shaft
Corrosion Protection - Double corrosion proof painting inside triple corrosion proof painting outside Hub Height (Including foundation) - 78.5 m Top most diameter of shell-2.82 m Bottom most diameter of shell - 4.03 m	Brake Caliper - 1
Pitch System	YAW System
Type and Drive - Electrical, 1 electric motor with gearbox & electrically operated brake for each blade	Yaw motor and gear type - Active electric yaw drive having electric motor with brake gearbox and pinion
Pitch angle full range - -5 degree to +90 degree	Bearing - Slide bearing with gear ring and automatic greasing system
Pitch speed (angular) - 0.1 to 10 degree per second	Number of units/motor – 4 Rated motor capacity - 3 kW each Yaw speed (angular) - 27.8 ^o /min Voltage - 3 phase-690 V AC

B.2. Post-registration changes

B.2.1. Temporary deviations from the registered monitoring plan, applied methodologies, standardized baselines or other methodological regulatory documents

There are no deviations from the registered monitoring plan or applied methodology

B.2.2. Corrections

There are no corrections.

B.2.3. Changes to the start date of the crediting period

There are no changes in start date of the crediting period.

B.2.4. Inclusion of monitoring plan

Not Applicable

B.2.5. Permanent changes to the registered monitoring plan, or permanent deviation of monitoring from the applied methodologies, standardized baselines, or other methodological regulatory documents

There are no permanent changes from registered monitoring plan or applied methodology

B.2.6. Changes to project design

There are no changes in the project design.

B.2.7. Changes specific to afforestation or reforestation project activity

Not Applicable

SECTION C. Description of monitoring system

The monitoring plan of the project activity is formulated as per the approved methodology AMS I.D. version-17. As per the methodology, the methodology requires monitoring of the quantity of net electricity generation from the project activity supplied to the grid.

The electricity from the project activity WTG is generated at 690 volt and then step up at 11/66 KV and goes to internal grid (i.e. Substation). Finally, the substation output at 220 KV connects to grid. There are other WTGs (non-project activities) connected to the substation feeder meter to which project activity WTG is connected. Therein, the wind power projects has attained a cumulative capacity (including the project activity and non-project activities) are connected to the substation feeder, at which the project activity is connected to.

There is a tri-vector energy meter located adjacent to the project activity WTG at the project site.

This energy meter is capable of recording both, export as well as import of electricity from the project WTG and have an accuracy class of 0.2s. The electricity exported and imported by this energy meter at the project site are monitored continuously and recorded on monthly basis by the PP representative. Apart from the above mentioned energy meter, there is a main and check meter of accuracy class of 0.2 s located at Suzlon substation to which project as well as non-project WTGs are connected. This meter is also capable of continuous monitoring. The representatives of GETCO/GEDA and the PP record the monthly reading of the electricity supplied by the connected WTGs at the substation. Based on the above recordings i.e. one at the energy meters at the project site and the other at the main /check meter located at Suzlon substation, the apportioning procedures is carried out by GETCO/GEDA representatives to deduce the net electricity supplied by the individual WTGs connected to the feeder.

The PP would like to clarify that this procedures of apportioning is carried out and controlled by

the GETCO/GEDA representatives and PP has no role to play in the same. Finally, State Load Dispatch Centre (SLDC)/GETCO provides the “Certificate for Share of Electricity Generated by Wind Farm”, which indicates the net electricity supplied by the project activity WTG. The value indicated in the share certificate is used for the emission reduction calculations. The electricity supplied value as indicated in share certificate is then adjusted in the electricity bill of the captive unit to which the electricity wheeled to, after deducting wheeling and transmission charges of 7%.

The apportioning formula used by GETCO/GEDA representatives to calculate the net electricity supplied by the project activity WTG to the grid is as follows:

$$D = (A/B) * C,$$

Where,

A= Net electricity generated by the project activity WTG and recorded by energy meter at the project site

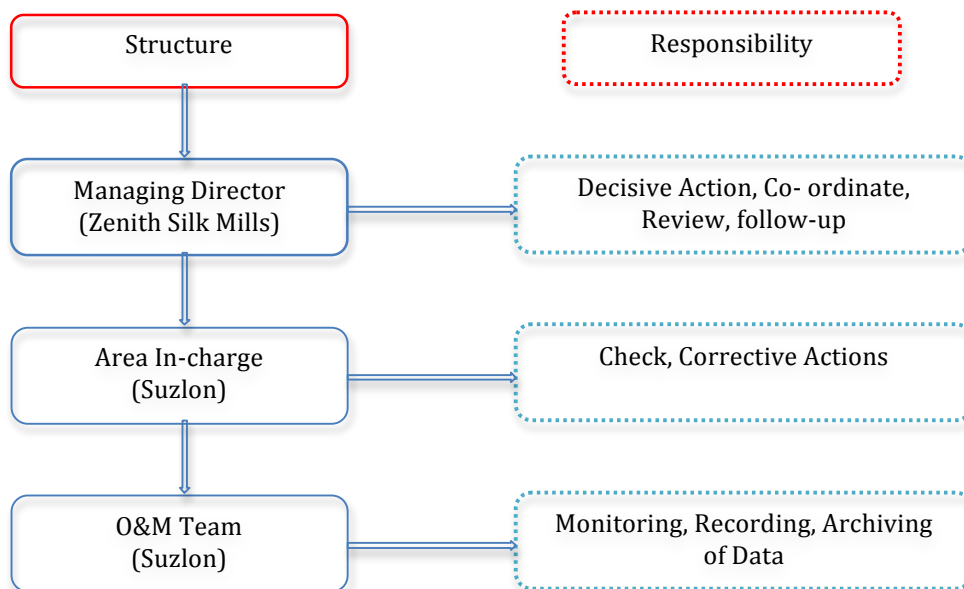
B= Sum of the net electricity supplied by all the WTGs (project as well as non-project WTGs) and recorded by energy meters adjacent to these WTGs at the project site

C= Net electricity supplied to the grid by all the WTGs (project as well as non-project WTGs) connected to the sub-station and recorded at the main/check meter at the substation

The PP would like to clarify that this procedures of apportioning is carried out and controlled by the GETCO/GEDA representatives and PP has no role to play in the same.

The operational and management structure implemented by Zenith Silk Mills Private Limited and Suzlon is as follows:

The operational and management structure implemented by Zenith Silk Mills Private Limited and Suzlon is as follows:



Managing Director (MD) – Zenith Silk Mills

He would be responsible for overall co-ordination towards the project development under CDM, including communication with CDM Consultants and Validation/Verification agencies etc. He would also ensure that the relevant monitoring and data up-keep is carried out for the project activity properly and regularly. Thus, the MD-Zenith Silk Mills would solely responsible for timely execution of all the related activities in CDM project development as well as operation of the proposed project activity and would take decisive actions in this regard.

Area In-charge – Suzlon

He would responsible for trouble free day to day operation of the wind energy turbine (WTG) in support with O&M Team - Suzlon. He would ensure that the monitoring plan is adhered and operations are carried out as per standard procedures. He will collect all the relevant monitored data from O&M Team - Suzlon, and submit them to the GM (Comm.) – Zenith Silk Mills through the channel for his perusal. For the CDM aspects, he would co-ordinate for the site visits under validation/verification process of the project activity.

O&M Team – Suzlon

The monitoring data related to the project activity would be collected, reported, maintained and archived by O&M Team of Suzlon. The corrective actions (if required) would be taken by O&M Team of Suzlon to maintain the quality of data. The team would further submit the monitoring data to Area in-charge– Suzlon for perusal and further will be submitted to MD, Zenith Silk Mills in the form of a daily as well as a monthly report.

SECTION D. Data and parameters**D.1. Data and parameters fixed ex ante**

(Copy this table for each data or parameter.)

Data/Parameter	W_{OM}
Unit	Fraction
Description	Weight of Operating Margin Emission Factor in the emission factor used for the proposed project activity
Source of data	Tool to calculate the emission factor for an electricity system, Version 02.2.1, as per Annex 19 of EB 63.
Value(s) applied	0.75
Choice of data or measurement methods and procedures	This is in accordance with the applicable approved methodology AMS-I.D. version 17 – “Grid Connected Renewable Electricity Generation”
Purpose of data/parameter	This value is used for calculating combined margin emission factor
Additional comments	This value is ex-ante and will remain fixed throughout the crediting period.

Data/Parameter	W_{BM}
Unit	Fraction
Description	Weight of Build Margin Emission Factor in the emission factor used for the proposed project activity
Source of data	Tool to calculate the emission factor for an electricity system, Version 02.2.1, as per Annex 19 of EB 63.
Value(s) applied	0.25
Choice of data or measurement methods and procedures	This is in accordance with the applicable approved methodology AMS-I.D. version 17 – “Grid Connected Renewable Electricity Generation”
Purpose of data/parameter	This value is used for calculating combined margin emission factor
Additional comments	This value is ex-ante and will remain fixed throughout the crediting period.

Data/Parameter	EF_{OM,y}
Unit	tCO ₂ /MWh
Description	Operating Margin Emission Factor of NEWNE Grid
Source of data	“CO ₂ Baseline Database for the Indian Power Sector”, User Guide, Version 7.0 dated January 2012, released by the Central Electricity Authority, Ministry of Power, Government of India
Value(s) applied	0.9850
Choice of data or measurement methods and procedures	The “CO ₂ Baseline Database for the Indian Power Sector”, User Guide, Version 7.0 dated January 2012, released by the Central Electricity Authority, Ministry of Power, Government of India, is the official database for statistics on the power sector in India in the various grids. It has been specially created to meet the data requirements for emission factors for the CDM project activities in the country. The database is used in accordance with the requirements in the applicable methodology stated as, “Calculations must be based on data from an official source and made publicly available”
Purpose of data/parameter	This value is used for Baseline emission calculation.
Additional comments	The data is used as per ex ante option of the „Tool to calculate the emission factor for an electricity system – Version 02.2.1, as per Annex 19 of EB 63.

Data/Parameter	EF_{BM,y}
Unit	tCO ₂ /MWh
Description	Build Margin Emission Factor of NEWNE Grid
Source of data	Calculated
Value(s) applied	0.8587
Choice of data or measurement methods and procedures	The “CO ₂ Baseline Database for the Indian Power Sector”, User Guide, Version 7.0 dated January 2012, released by the Central Electricity Authority, Ministry of Power, Government of India, is the official database for statistics on the power sector in India in the various grids. It has been specially created to meet the data requirements for emission factors for the CDM project activities in the country. The database is used in accordance with the requirements in the applicable methodology stated as, “Calculations must be based on data from an official source and made publicly available”
Purpose of data/parameter	This value is used for Baseline emission calculation.
Additional comments	The data is used as per ex ante option of the „Tool to calculate the emission factor for an electricity system – Version 02.2.1, as per Annex 19 of EB 63.

Data/Parameter	EF_{CM,y}
Unit	tCO ₂ /MWh
Description	Combined Margin Emission Factor of NEWNE Grid
Source of data	<p>Combined margin CO₂ emission factor for grid connected power generation in year y has calculated using the “Tool to calculate the emission factor for an electricity system – Version 02.2.1” as follows:</p> $EF_{CO_2,grid,y} = W_{OM} * EF_{OM,y} + W_{BM} * EF_{BM,y}$ $EF_{CO_2,grid,y} = 0.75 * 0.9850 + 0.25 * 0.8587 = 0.9534$
Value(s) applied	0.9534
Choice of data or measurement methods and procedures	This is in accordance with the applicable approved methodology, AMS-I.D, Version 17 – “Grid Connected Renewable Electricity Generation”, and the „Tool to calculate the Emission Factor for an Electricity System - Version 02.2.1.
Purpose of data/parameter	This value is used for Baseline emission calculation.
Additional comments	The data is used as per ex ante option of the „Tool to calculate the emission factor for an electricity system – Version 02.2.1, as per Annex 19 of EB 63.

D.2. Data and parameters monitored

(Copy this table for each data or parameter.)

Data/Parameter	EG_{BL, y}
Unit	kWh
Description	Net electricity supplied to the grid by the project activity during the year y
Measured/calculated/default	Measured and Calculated
Source of data	“Certificate for Share of Electricity Generated by Wind Farm”
Value(s) of monitored parameter	20,981,918
Monitoring equipment	Monitoring equipment: Type: Tri-vector Energy meter
Measuring/reading/recording frequency	<p>Continuous measuring, hourly reading and monthly recording.</p> <ul style="list-style-type: none"> • There is a tri-vector energy meter located adjacent to the project activity WTG at the project site. • This energy meter is capable of recording both, export as well as import of electricity from the project WTG and have a accuracy class of 0.2s. • The electricity exported and imported by this energy meter at the project site are monitored continuously and recorded on monthly basis by the PP representative. • Apart from the above mentioned energy meter, there is a main and check meter of accuracy class of 0.2 s located at Suzlon substation to which project as well as non-project WTGs are connected. This meter is also capable of continuous monitoring. • The representatives of GETCO/GEDA and the Project Participant (PP) record the monthly reading of the electricity supplied by the connected WTGs at the substation.

Calculation method (if applicable)	<ul style="list-style-type: none"> Based on the above recordings i.e. one at the energy meters at the project site and the other at the main /check meter located at Suzlon substation, the apportioning procedures is carried out by GETCO/GEDA representatives to deduce the net electricity supplied by the individual WTGs connected to the feeder. The PP would like to clarify that this procedures of apportioning is carried out and controlled by the GETCO/GEDA representatives and PP has no role to play in the same. Finally, State Load Dispatch centre (SLDC)/GETCO provides the "Certificate for Share of Electricity Generated by Wind Farm"" (hereinafter referred as share certificate), which indicates the net electricity supplied by the project activity WTG. The value indicated in the share certificate will be used for the emission reduction calculations. The electricity supplied value as indicated in share certificate is then adjusted in the electricity bill of the captive unit to which the electricity wheeled to, after deducting wheeling and transmission charges of 7%.
QA/QC procedures	<p>The main and check meters are to be calibrated annually by (GETCO/GEDA) and the energy meter at the project activity site will also be calibrated once in a year.</p> <p>The net electricity supplied value as indicated in share certificate can be cross checked with the electricity bills of the captive unit of PP where the electricity will be wheeled to, after deducting the wheeling and transmission losses.</p>
Purpose of data/parameter	Calculation of Baseline Emissions
Additional comments	Monitored data will be archived electronically for the crediting period + 2 years by the project proponent.

Data/Parameter	EG_{WTG, y}
Unit	kWh
Description	Quantity of net electricity generated by the project activity WTG, as recorded at the energy meter at project site
Measured/calculated/default	Measured and Calculated
Source of data	Monthly generation records maintained by PP/its representative
Value(s) of monitored parameter	-
Monitoring equipment	<p>Monitoring equipment:</p> <p>Type: Tri-vector Energy meter</p>
Measuring/reading/recording frequency	<p>Continuous measuring, hourly reading and monthly recording.</p> <ul style="list-style-type: none"> There is a tri-vector energy meter located adjacent to the project activity WTG at the project site. This energy meter is capable of recording both, export as well as import of electricity from the project WTG and have a accuracy class of 0.2s The electricity exported and imported by this energy meter at the project site are monitored continuously and recorded on monthly basis by the PP representative.
Calculation method (if applicable)	-

QA/QC procedures	The energy meter at the project activity site will be calibrated once in a year. This parameter would be used to cross check the electricity supplied values as indicated in SLDC/GETCO share certificate ($EG_{BL,y}$) and the conservative approach would be taken to deduce the electricity supplied values in the calculation of emission reductions.
Purpose of data/parameter	Calculation of Baseline Emissions
Additional comments	Monitored data will be archived electronically for the crediting period + 2 years by the project proponent.

D.3. Implementation of sampling plan

Sampling is not applicable for this project activity.

SECTION E. Calculation of emission reductions or net anthropogenic removals

E.1. Calculation of baseline emissions or baseline net removals

Baseline emission has been calculated as the electricity produced by the renewable generating unit multiplied by an emission coefficient for the NEWNE Grid.

$$BE = EG_{BL} \times EF_{CO_2 \text{ grid},y}$$

Where,

EG_y is the amount of electricity generation by the project in year y ,

EF_y is the Emission factor of the NEWNE Grid.

$$\begin{aligned} BE_y &= 20981.918 \text{ MWh} \times 0.9534 \text{ tCO}_2/\text{MWh} \\ &= 20,004 \text{ tCO}_2 \text{ (Rounded Down)} \end{aligned}$$

E.2. Calculation of project emissions or actual net removals

Project Emissions (PE_y)

As mentioned earlier in section B.6.1 of registered PDD, project emissions due to project activity are considered as zero.

Hence, $PE_y = 0$; for this project activity.

E.3. Calculation of leakage emissions

Leakage (LE_y)

As mentioned earlier in section B.6.1 of registered PDD, leakage due to project activity are considered as zero.

Therefore, no leakage is envisaged for the proposed project, i.e. $LE_y = 0$

Hence, $LE_y = 0$

E.4. Calculation of emission reductions or net anthropogenic removals

	Baseline GHG emissions or baseline net GHG removals (t CO ₂ e)	Project GHG emissions or actual net GHG removals (t CO ₂ e)	Leakage GHG emissions (t CO ₂ e)	GHG emission reductions or net anthropogenic GHG removals (t CO ₂ e)			
				Before 01/01/2013	From 01/01/2013 until 31/12/2020	From 01/01/2021	Total amount
Total	20,004	0	0	182	19,822	0	20,004

E.5. Comparison of emission reductions or net anthropogenic removals achieved with estimates in the registered PDD

Amount achieved during this monitoring period (t CO ₂ e)	Amount estimated ex ante for this monitoring period in the PDD (t CO ₂ e)
20,004	24,216

E.5.1. Explanation of calculation of “amount estimated ex ante for this monitoring period in the PDD”

The annual ex-ante emission reductions calculated in the registered PDD are 2,977 tCO₂e. Therefore, the amount of estimated emission reduction for this monitoring period is 24,216 tCO₂e.

E.6. Remarks on increase in achieved emission reductions

During this monitoring period, the project activity has achieved a total emission reduction of 20,004 tCO₂e and that is 17.39% less than the emission reduction estimated in the registered PDD. The wind power generation is totally season based and the variation in the wind flow with respect to the season determines the power generation. The wind flow is not equal through out the year and PP has no control over the seasonal wind flow. Therefore, the difference between the actual emission reduction in this monitoring period and estimated emission reduction in registered PDD is acceptable.

E.7. Remarks on scale of small-scale project activity

There is no change in the scale of the project activity, the annual quantum of emission reduction achieved by the project activity during this monitoring period are still satisfying the eligibility criteria of small scale project activity.

Document information

<i>Version</i>	<i>Date</i>	<i>Description</i>
09.0	8 October 2021	Revision to: <ul style="list-style-type: none"> • Ensure consistency with version 03.0 of the “CDM project standard for project activities” (CDM-EB93-A04-STAN).
08.0	6 April 2021	Revision to: <ul style="list-style-type: none"> • Reflect the “Clarification: Regulatory requirements under temporary measures for post-2020 cases” (CDM-EB109-A01-CLAR).
07.0	31 May 2019	Revision to: <ul style="list-style-type: none"> • Ensure consistency with version 02.0 of the “CDM project standard for project activities” (CDM-EB93-A04-STAN); • Add a section on remarks on the observance of the scale limit of small-scale project activity during the crediting period; • Add "changes specific to afforestation or reforestation project activity" as a possible post-registration changes; • Clarify the reporting of net anthropogenic GHG removals for A/R project activities between two commitment periods; • Make editorial improvements.
06.0	7 June 2017	Revision to: <ul style="list-style-type: none"> • Ensure consistency with version 01.0 of the “CDM project standard for project activities” (CDM-EB93-A04-STAN); • Make editorial improvements.
05.1	4 May 2015	Editorial revision to correct version numbering.
05.0	1 April 2015	Revisions to: <ul style="list-style-type: none"> • Include provisions related to delayed submission of a monitoring plan; • Provisions related to the Host Party; • Remove reference to programme of activities; • Overall editorial improvement.
04.0	25 June 2014	Revisions to: <ul style="list-style-type: none"> • Include the Attachment: Instructions for filling out the monitoring report form (these instructions supersede the "Guideline: Completing the monitoring report form" (Version 04.0)); • Include provisions related to standardized baselines; • Add contact information on a responsible person(s)/ entity(ies) for completing the CDM-MR-FORM in A.6 and Appendix 1; • Change the reference number from <i>F-CDM-MR</i> to <i>CDM-MR-FORM</i>; • Editorial improvement.
03.2	5 November 2013	Editorial revision to correct table in page 1.

<i>Version</i>	<i>Date</i>	<i>Description</i>
03.1	2 January 2013	Editorial revision to correct table in section E.5.
03.0	3 December 2012	Revision required to introduce a provision on reporting actual emission reductions or net GHG removals by sinks for the period up to 31 December 2012 and the period from 1 January 2013 onwards (EB 70, Annex 11).
02.0	13 March 2012	Revision required to ensure consistency with the "Guidelines for completing the monitoring report form" (EB 66, Annex 20).
01.0	28 May 2010	EB 54, Annex 34. Initial adoption.

Decision Class: Regulatory
Document Type: Form
Business Function: Issuance
Keywords: monitoring report
