



**Verified Carbon  
Standard**

## BIOMASS BASED POWER GENERATION PLANT AT VILLAGE CHANNU, PUNJAB



Document Prepared by EKI Energy Services Limited

<b>Project Title</b>	Biomass Based Power Generation Plant at Village Channu, Punjab
<b>Version</b>	02.1
<b>Report ID</b>	UBEPL-VCSMR2-
<b>Date of Issue</b>	04/02/2022
<b>Project ID</b>	VCS 650
<b>Monitoring Period</b>	01/03/2011 to 28/02/2017
<b>Prepared By</b>	Mr. Saroj Sahoo DGM, Climate Change, EKI Energy Services Limited
<b>Contact</b>	EnKing Embassy, Office no. 201, Plot 48, Scheme 78 Part 2, Vijay Nagar Near Brilliant Convention Centre, Indore - 452010, Madhya Pradesh, India Website: <a href="http://www.enkingint.org">www.enkingint.org</a>  Email ID: <a href="mailto:saroj@enkingint.org">saroj@enkingint.org</a>

# CONTENTS

---

<b>1</b>	<b>PROJECT DETAILS.....</b>	<b>4</b>
1.1	Summary Description of the Implementation Status of the Project .....	4
1.2	Sectoral Scope and Project Type .....	4
1.3	Project Proponent .....	4
1.4	Other Entities Involved in the Project .....	5
1.5	Project Start Date .....	5
1.6	Project Crediting Period .....	5
1.7	Project Location .....	5
1.8	Title and Reference of Methodology .....	6
1.9	Participation under other GHG Programs.....	7
1.10	Other Forms of Credit.....	7
1.11	Sustainable Development.....	7
<b>2</b>	<b>SAFEGUARDS.....</b>	<b>9</b>
2.3	AFOLU-Specific Safeguards .....	10
<b>3</b>	<b>IMPLEMENTATION STATUS.....</b>	<b>10</b>
3.1	Implementation Status of the Project Activity.....	11
3.2	Deviations.....	12
3.3	Grouped Projects .....	12
<b>4</b>	<b>DATA AND PARAMETERS.....</b>	<b>12</b>
4.1	Data and Parameters Available at Validation .....	12
4.2	Data and Parameters Monitored.....	15
4.3	Monitoring Plan.....	20
<b>5</b>	<b>QUANTIFICATION OF GHG EMISSION REDUCTIONS AND REMOVALS .....</b>	<b>23</b>
5.1	Baseline Emissions .....	23
5.2	Project Emissions .....	25
5.3	Leakage.....	26

5.4 Net GHG Emission Reductions and Removals .....26

**APPENDIX X: <TITLE OF APPENDIX> ..... 28**

# 1 PROJECT DETAILS

## 1.1 Summary Description of the Implementation Status of the Project

The proposed CDM project activity is undertaken by Universal Biomass Energy Private Limited (UBEPL) in Muktsar district of Punjab, India. The project involves installation of a new 14.50 MW Bio-mass Residue based Power Plant to generate electricity and export power to the national grid of India. The power plant will be fired primarily with cotton stalk, a by-product of cotton cultivation with mustard stalk being other locally available agricultural wastes as the other fuel. The project activity shall thus reduce GHG emissions by displacing the fossil fuel dominated grid based electricity with biomass residues based renewable electricity.

The purpose of the project activity is to utilize the surplus biomass available in the region namely cotton stalks and mustard stalk effectively for generation of power. Electricity thus generated will be exported to the grid and hence will contribute to Green House Gas (GHG) emission reductions and sustainable economic growth. The proposed project will further help to reduce the ever-increasing demand and supply gap of electricity in the host country, India.

The location of proposed UBEPL's power plant in Muktsar District, Punjab was considered keeping in view the availability of cotton stalk in the area. Muktsar lies in southern Punjab which is the main cotton growing area of the state. Muktsar, Bathinda and Ferozpur districts of Punjab have been Identified as the other prime source of feedstock i.e. cotton stalk to run the power plant. The state of Punjab produces 25% of Country's cotton.

Project activity of UBEPL proposes to adopt Rankine cycle of combustion technology, where the Biomass fuels can be directly fired inside the boilers to generate 14.5 MW. The project activity will result in Net Energy Generation of 90,311 MWh.

The emission reductions achieved during current monitoring period, 01/03/2011 to 28/02/2017 is 394,873 tCO<sub>2</sub>.

## 1.2 Sectoral Scope and Project Type

Sectoral Scope: **01**

**Project Type:** The project activity is a type I i.e. Renewable Energy Projects.

The project activity is an individual project activity and not a grouped project.

## 1.3 Project Proponent

Organization name	Universal Biomass Energy Private Limited(UBEPL)
Contact person	Mr. Jasbir Singh
Title	Director
Address	Giddarbaha-Lambi Road, Village: Channu District: Muktsar, Punjab Post-152107
Telephone	+911637241501

<b>Email</b>	universalbiomass@rediffmail.com
--------------	---------------------------------

## 1.4 Other Entities Involved in the Project

<b>Organization name</b>	EKI Energy Services Limited
<b>Role in the Project</b>	Project Consultant
<b>Contact person</b>	Mr. Saroj Sahoo
<b>Title</b>	DGM, Climate Change
<b>Address</b>	Office no. 201, Plot 48, Scheme 78 Part 2 Vijay Nagar, Near Brilliant Convention Centre Indore - 452010 (M.P, India) Website <a href="http://www.enkingint.org">www.enkingint.org</a>
<b>Telephone</b>	+91-7506167848
<b>Email</b>	<a href="mailto:saroj@enkingint.org">saroj@enkingint.org</a>

## 1.5 Project Start Date

30/10/2009

## 1.6 Project Crediting Period

Type of crediting period: Fixed (10 Years)

Crediting Period: 30/10/2009 to 29/10/2019

## 1.7 Project Location

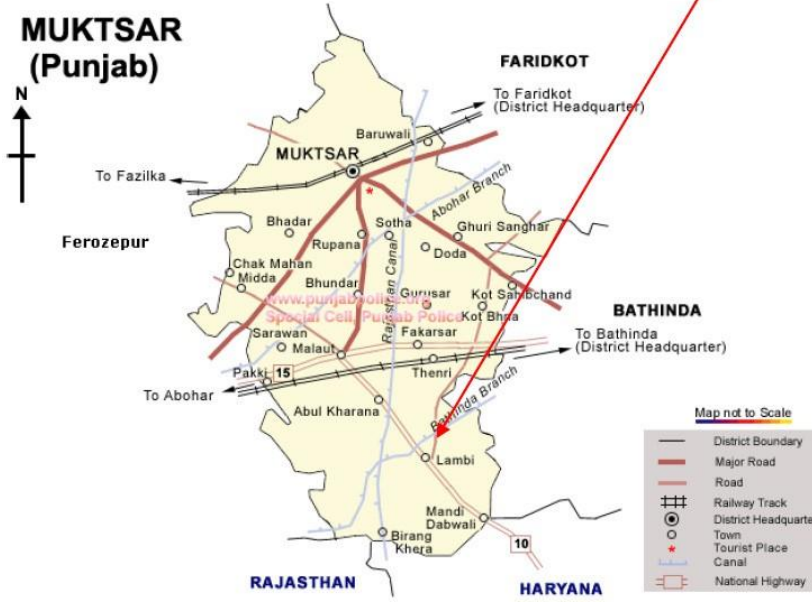
The project activity is located in village Channu, Tehsil Malout, District Muktsar Punjab state in India. Muktsar district is located in south western part of Punjab. It is surrounded by states of Rajasthan and Haryana in the south, district Faridkot in north, Ferozepur in west and Bathinda in the east. The western Himalayas in the north and Thar Desert in the south and south west determine the climatic condition of the district. It covers an area of 2615 sq km, which constitutes 5.19 % area of the state of Punjab. Muktsar city is well connected by rail and road. It is located at 260 km from Chandigarh and 356 km from New Delhi.

The coordinates of project activity site,village: Channu (Tehsil Malout)are:

Latitude-30 degree 07' 15.95"N to 30 degree 07' 21.38"N

Altitude-164 Metres above mean sea level.

The following map shows the exact location of the project activity.



1.8 Title and Reference of Methodology

<b>Title</b>	AMS ID: Grid connected renewable electricity generation
<b>Version number</b>	15
<b>Reference</b>	<a href="http://cdm.unfccc.int/methodologies/DB/RSCTZ8SKT4F7N1CFDXCSA7BDQ7FU1X">http://cdm.unfccc.int/methodologies/DB/RSCTZ8SKT4F7N1CFDXCSA7BDQ7FU1X</a>

## 1.9 Participation under other GHG Programs

The project is also registered under Clean Development Mechanism (CDM) at United Nations Framework Convention on Climate Change (UNFCCC), UNFCCC Ref no. 4488.

The project proponent shall not claim any credit under CDM for the monitoring period under consideration. A declaration to this regard shall be submitted to the DoE.

## 1.10 Other Forms of Credit

The project has not sought or received another form of GHG-related environmental credit, including renewable energy certificates, neither claimed credits under any other Emission Trading Programs or any binding limits during this monitoring period. A declaration to this regard is submitted to the DoE.

## 1.11 Sustainable Development

UBEPL management has envisaged that the project activity through the production of energy from biomass would contribute to sustainable development through the reduction of GHG emissions in the region. The sustainable development potential of the project activity is highlighted through the following indicators for sustainable development stipulated by Designated National Authority for CDM i.e. The Ministry of Environment, Forest and Climate Change, Government of India:

- Environmental well-being.
- Social well being.
- Economic well-being.
- Technological well-being.

### **Contribution to environmental well-being**

- The proposed project activity utilizes biomass potential available for power generation. The power thus generated is supplied to National grid of India, which is dominated by electricity generated using fossil fuels such as coal, lignite, petroleum fuels and gas etc. The project activity results in GHG emission reduction of 0.84 tCO<sub>2</sub>e per MWh of electricity generated in the project plant.
- The proposed project activity helps conserve local resources, reduces pressure on the local environment and provides improved health in addition to other environmental benefits. At the same time the uncontrolled burning of biomass in the absence of proposed project activity is prevented by use in power plant under controlled conditions, thus reducing the production of carbon monoxide and other harmful gases.
- In addition to the reduction in Carbon Dioxide emissions the project implementation results in reduction of other harmful gases (NO<sub>x</sub> and SO<sub>x</sub>) that arise from the combustion of fossil fuel used in conventional power generation.
- The project also leads to reduced ash generation since the ash content in cotton stalk and other similar biomass that is used in proposed project activity is lower than that of Indian coal.

### **Contribution to social wellbeing**

- The project activity results in direct and indirect employment opportunities for local persons towards installation, operation and maintenance of the proposed project activity.
- Collection, transportation and handling of biomass residue from fields involve man power requirement throughout the year, hence generate employment opportunities to the rural people.

- Direct employment opportunity due to the project activity is expected to be for approximately 326 persons approximately. This contributes towards improvement of the local economic structure and the social status of the people involved, clearly indicating positive socio-economic impact in the local area.
- The proposed project engages both genders in construction of the project, biomass collection and handling etc. during entire operational lifetime of the project. This leads to an increase in gender equity and hence prevents social disparities.
- Project proponents have planned personal protective equipments such as gloves etc., to provide them protection against the usual injuries during manual handling and collection of cotton stalk biomass.

#### **Contribution to economic wellbeing**

- The project has brought an investment of approximately Rs.7,459 Million as a Greenfield project in the under developed site of project location.
- Proposed project activity acts as a nucleus for other economic activities such as setting up of shops, hotels etc in and around the area contributing to the economic development around the project site. It will result in increased business opportunities for local contractors and suppliers during the various phases.
- The project generates commercial value to crop residues enabling the farmers to get better price out of their produce augmenting their income.
- The proposed biomass based power generating plant contributes to the availability of continuous and sustained power to the local industries and agricultural farmers located in remote areas, thereby avoiding the load shedding and improving quality of power. This further helps in improving the socioeconomic status of the region.

#### **Contribution to technological well-being**

- The technology selected for the proposed project is an energy efficient technology. The project uses a steam turbine generator with matching boiler of travelling grate type. The equipments being supplied for the project activity are from well established manufacturers.
- Installation of such plant at UBEPL substantially upgrades the technological status of the industry, developing superior skills and competencies and thus promotes similar projects in the region.
- A true redundant Distributed Control System (DCS) has been installed for efficient control of the power plant.
- The boiler control system is equipped with all required control loops namely; 1) Three element drum level control, 2) Furnace draft control, 3) Steam temperature control, 4) Deaerator level/pressure control and, 5) Soot blower pressure control.
- The proposed project activity involves installation of an automated combustion control system to ensure highly efficient combustion of biomass in the boiler.
- The turbine is equipped with various protection controls such as over speed and over load, high vibration, differential expansion and low vacuum. Besides this efficient Automatic Tracking System (ATS) has been provided.

In view of the points discussed above, the project activity profoundly contributes to sustainable development criteria stipulated by Government of India, host country.

## 2 SAFEGUARDS

### 2.1 No Net Harm

There are no negative environmental impacts arising due to project activity, the positive environmental impacts arising from the project activity are:

- A reduction in carbon dioxide emissions from the replacement of fossil fuels which otherwise would have been used under the baseline scenario for generation of electricity.
- UBEPL has installed an ESP for the reduction of particulate emission to less than 100mg/Normal m<sup>3</sup> to which is well below the limits prescribed by Central Pollution Control Board, India

Following factors were analyzed for assessing potential impacts and the conclusions are as follows:

1. Impact on Land: Ash generated from the project activity is disposed as per the State Pollution Control Board guidelines. It is used for Brick making if they find the same as per norms.
2. Impact on Water: The waste water generated from the project activity will be treated to meet required limits before disposal.
3. Impact on Air: As stated above, the project activity leads to reduction of GHG emission and also the particulate emission is reduced to permissible limits by use of an ESP. Vent through stacks is monitored to ensure compliance as per State Pollution Board Guidelines and indicated consent conditions.
4. Impact on Ecology: The project activity does not foresee any harmful impact on the ecology. There are no nearby forests, or zones high on biodiversity, or other environmentally sensitive locations around the factory that might be affected negatively due to the project. Further, no harmful impact is caused on the aquatic ecology as well as on the local vegetation. Individuals working in high noise zones will be provided adequate gadgets for protection.

The project activity has received the consent to establish from Punjab Pollution Control Board. During the operation of the power plant a yearly consent to operate is obtained from the PPCB for air and water pollution. The project operates within the stipulated limits set by PPCB and the same is monitored as part of the overall GHG emission reduction project compliance.

## 2.2 Local Stakeholder Consultation

The local stakeholders who face the immediate effect due to the project activity, which involves effect on the local environment, social life and economics, were identified on the basis of their involvement at various stages of project activity.

A local stakeholder meeting was organized by UBEPL management, inviting representatives from local community on 5th July 2008 at Village Channu, district Muktsar, Punjab, India. These local stakeholders were informed about the proposed project activity and CDM by circulating pamphlets in nearby local villages and by sending individual letters briefing the scope, nature and description of the project.

The minutes of meeting were made and sent to the participants. These minutes was made available to DOE during the validation process.

The project activity has received the “consent to establish” form the Punjab Pollution Control Board.

The agencies notified for the project activity are as below and these are satisfied as project participants have met their compliance:

1. State Expert Appraisal Committee, Govt. of Punjab
2. Punjab Pollution Control Board
3. Punjab State Electricity Regulatory Commission
4. Director of Industries and Commerce, Punjab
5. Department of Town and Country Planning, Punjab
6. Punjab Energy Development Agency

There are no pending issues related to the stakeholders, state and national agencies and project owners have received relevant formal consents.

The local stakeholders were informed about possible generation of employment, additional income to the farmers by the purchase of biomass and mitigation of air pollution as a result of the proposed biomass based power plant. The villagers were appreciative of the project and its associated benefits and no adverse comments had been received.

Statutory clearances from all the other stakeholders notified above have been obtained, reflecting the adherence to prescribed standards of compliance.

The project proponent has devised a system for local stake holder interaction during the operation of the project. Local stake holders are allowed to visit the project site and raise their concern about the project. A grievance register is maintained at the project site in which the feedback and concerns are reported. There is no adverse comment recorded to be reported during the monitoring period under consideration. The copy of grievance register is submitted to the DoE.

## 2.3 AFOLU-Specific Safeguards

Not applicable

# 3 IMPLEMENTATION STATUS

### 3.1 Implementation Status of the Project Activity

The project activity is located at Channu village. Project was implemented and commissioned on 30/10/2009 which is before the registration<sup>1</sup> with UNFCCC. All facilities and equipment have been installed.

#### Major Technical Parameters of the Boiler

Description	Parameters
No. of boilers	One (1)
Makers	ISGEC John Thomson (IJT)
Type	Bi-drum, natural circulation, balanced draft, bottom supported, outdoor water tube type travelling grate
Steam flow at main steam stop valve outlet (100% BMCR)	70 TPH
Steam pressure at main steam stop valve outlet	67 kg/cm <sup>2</sup> (g)
Steam temperature at main steam stop valve outlet	475 +/- 5 deg C.
Feed water temperature at the economizer inlet	126 deg C
Design code for pressure parts	IBR IWT-6212

#### Major Technical Parameters of the Steam Turbine Generator

Description	Parameters
No of Turbine	One (1)
Makers	Qingdao Jieneng Power Station Engineering Co., Ltd (QJPS)
Type	Condensing
Rated capacity of turbine	14.5 MW with 10TPH extraction at 2.5 ata
Steam conditions at turbine inlet pressure (g)	64.5281 kg/cm <sup>2</sup>
Temperature	485 deg C.
Condenser operational pressure	0.0098 M Pascal
Designed temperature drop in the cooling tower (deg C)	10
Rating at the generator terminals (MW)	14.50
Electrical generator	Jinan Power Equipment Factory

The operation of the project activity has been carried out as it has been described in the registered project design. There has not been observed any event during this monitoring period that may impact the GHG emission reductions or removals and monitoring.

The ownership of the project has been changed since the commissioning of the project, the project is owned and operated by Universal Biomass Energy Private Limited (UBEPL) during the entire monitoring plan.

## 3.2 Deviations

### 3.3.1 Methodology Deviations

Not applicable

### 3.3.2 Project Description Deviations

Not applicable

## 3.3 Grouped Projects

Not applicable

# 4 DATA AND PARAMETERS

## 4.1 Data and Parameters Available at Validation

<b>Data / Parameter</b>	<b>EF<sub>CO2</sub></b>
<b>Data unit</b>	tCO <sub>2</sub> e/MWh
<b>Description</b>	Combined margin (CM) value of CO <sub>2</sub> baseline emission factor for the grid electricity displaced due to the project activity during the year y
<b>Source of data</b>	Central Electricity Authority, India “CO <sub>2</sub> baseline database, version 5, November 2009” ( <a href="https://cea.nic.in/cdm-co2-baseline-database/?lang=en">https://cea.nic.in/cdm-co2-baseline-database/?lang=en</a> )
<b>Value applied</b>	0.84
<b>Justification of choice of data or description of measurement methods and procedures applied</b>	As local data <sup>1</sup> s are not available hence, Combined margin (CM) value by CEA is considered. CEA is the statutory organization constituted by Government of India to advise on matters relating to the national electricity policy, CEA also collects and record the data concerning to the generation, transmission, trading, and distribution. CEA has developed an emission baseline database for all Indian regional grids <sup>1</sup> for prospective CDM projects. The database currently covers emission factors for fiscal years 2005-2008 and will be updated annually. CEA has calculated Combined margin (including inter-regional and cross-border electricity transfers) according to methodology ACM0002 for the year 2007 – 2008.

<sup>1</sup> The regional grids are now integrated to form a single national grid.

<b>Purpose of Data</b>	Used for calculation of Baseline emissions
<b>Comments</b>	Baseline emission factor is constant as ex-ante based and fixed for entire crediting period.

<b>Data / Parameter</b>	$EF_{grid,OM,y}$
<b>Data unit</b>	tCO <sub>2</sub> e/MWh
<b>Description</b>	Operating Margin(OM) emission factor for northern grid
<b>Source of data</b>	Central Electricity Authority, India "CO <sub>2</sub> baselinedatabase,version5,November2009)" ( <a href="https://cea.nic.in/cdm-co2-baseline-database/?lang=en">https://cea.nic.in/cdm-co2-baseline-database/?lang=en</a> )
<b>Value applied</b>	1.01
<b>Justification of choice of data or description of measurement methods and procedures applied</b>	CEA has calculated Operating margin as per ACM0013 Version 2.1 and Tool to calculate emission factor for electricity system, version 1.1, for year 2008-09. The operating margin describes the average CO <sub>2</sub> intensity of the existing stations in the grid which are most likely to reduce their output if a CDM project supplies electricity to the grid (or reduces consumption of grid electricity).
<b>Purpose of Data</b>	Used for calculation of Baseline emissions
<b>Comments</b>	-

<b>Data / Parameter</b>	$EF_{grid,BM,y}$
<b>Data unit</b>	tCO <sub>2</sub> e/MWh
<b>Description</b>	Build Margin(OM) emission factor for northern grid
<b>Source of data</b>	Central Electricity Authority, India "CO <sub>2</sub> baselinedatabase,version5,November2009)" ( <a href="https://cea.nic.in/cdm-co2-baseline-database/?lang=en">https://cea.nic.in/cdm-co2-baseline-database/?lang=en</a> )
<b>Value applied</b>	0.68
<b>Justification of choice of data or description of measurement methods and procedures applied</b>	CEA has calculated Built margin as per ACM0013 Version 2.1 and Tool to calculate emission factor for electricity system, version 1.1, for year 2008-09. The built margin is calculated in this database as the average CO <sub>2</sub> intensity of newly built power stations that will be (partially) replaced by a CDM project. In accordance with the Grid Tool, the build margin is calculated in this database as the average emissions intensity of the 20% most recent capacity additions in the grid based on net generation
<b>Purpose of Data</b>	Used for calculation of Baseline emissions
<b>Comments</b>	-

<b>Data / Parameter</b>	$EF_{km,CO_2,y}$
<b>Data unit</b>	tCO <sub>2</sub> e/km
<b>Description</b>	Average CO <sub>2</sub> emission factor for the trucks during the year, y

Source of data	The emission factor has been determined using appropriate net Calorific values and CO <sub>2</sub> emission factor from national reliable default values and/or IPCC default values.
Value applied	0.00044
Justification of choice of data or description of measurement methods and procedures applied	The emission factor has been determined using appropriate net calorific values and CO <sub>2</sub> emission factor from national reliable default values and/or IPCC default values.
Purpose of Data	Used for calculation of Project emissions
Comments	-

Data / Parameter	<b>EF<sub>DieselCO2</sub></b>
Data unit	tCO <sub>2</sub> /TJ
Description	The CO <sub>2</sub> emission factor of Diesel
Source of data	National CO <sub>2</sub> emission factor for diesel
Value applied	71.4
Justification of choice of data or description of measurement methods and procedures applied	National CO <sub>2</sub> Emission factor for Diesel as mentioned in the report on India's initial National Communication to UNFCCC.
Purpose of Data	Used for calculation of project emissions
Comments	National CO <sub>2</sub> Emission factor for Diesel as mentioned in the report on India's initial National Communication to UNFCCC.

Data / Parameter	<b>SFC<sub>biomass</sub></b>								
Data unit	Kg/kWh								
Description	Specific fuel consumption of biomass fuel types envisaged to be utilized in the project activity								
Source of data	"Detailed Project Report", prepared by Subhash Kamboj & Associates.								
Value applied		<table border="1"> <thead> <tr> <th>Type of biomass</th> <th>SFC(kg/kWh)</th> </tr> </thead> <tbody> <tr> <td>Cotton stalk (75%)</td> <td>1.188</td> </tr> <tr> <td>Mustard stalk (25%)</td> <td>1.188</td> </tr> </tbody> </table>	Type of biomass	SFC(kg/kWh)	Cotton stalk (75%)	1.188	Mustard stalk (25%)	1.188	
Type of biomass	SFC(kg/kWh)								
Cotton stalk (75%)	1.188								
Mustard stalk (25%)	1.188								
Justification of choice of data or description of measurement methods and procedures applied	The detailed calculation of arriving at this value is provided by the Third party consultant U Bandyopadhyaya in the Biomass Survey report as specified above and shall be submitted as evidence.								

<b>Purpose of Data</b>	To crosscheck the generation. Theoretical electricity Generation calculated using the specific fuel consumption of each biomass used in the project activity.
<b>Comments</b>	-

## 4.2 Data and Parameters Monitored

<b>Data / Parameter</b>	$EG_{BL,y}$
<b>Data unit</b>	MWh
<b>Description</b>	Quantity of Electricity exported to the grid by the project during the monitoring period.
<b>Source of data</b>	Joint Meter reading
<b>Description of measurement methods and procedures to be applied</b>	Electric power exported to grid will be measured monthly using calibrated meters by both project proponent and Punjab State Power Corporation Ltd. (PSPCL) as specified in the PPA and records maintained.
<b>Frequency of monitoring/recording</b>	The data is measured continuous and recorded monthly
<b>Value monitored</b>	473872
<b>Monitoring equipment</b>	<p>The electronic meters are calibrated annually to ensure correct readings throughout the project life.</p> <p>The calibration details for both main and check meters is furnished in the appendix-1</p>
<b>QA/QC procedures to be applied</b>	The meters are Tri-vector meters of 0.5 S accuracy class or more. Power exported to the grid and measured by state utility are checked for consistency comparing the readings with the meter installed at the project site. This is crosschecked with the records for the sold electricity.
<b>Purpose of the data</b>	To calculate Baseline emission

<b>Calculation method</b>	It is calculated based on the electricity export and import
<b>Comments</b>	This data is used for calculation of emission reductions after the subtraction of the electricity imported from the grid. The data would be archived for 2 years beyond the crediting period.

<b>Data / Parameter</b>	$Q_{y,cottonstalk}$
<b>Data unit</b>	Tonnes
<b>Description</b>	Quantity of cotton stalk received in the project activity
<b>Source of data</b>	Plant records/log books
<b>Description of measurement methods and procedures to be applied</b>	<ul style="list-style-type: none"> <li>- All the biomass is received truck wise and is recorded on daily and collated on monthly basis.</li> <li>- Each truck that enters the site will be recorded at the weigh bridge installed at the factory.</li> </ul>
<b>Frequency of monitoring/recording</b>	Batch monitoring (every truck of biomass is monitored)
<b>Value monitored</b>	644095
<b>Monitoring equipment</b>	Weigh bridge is used to measure the weight of the biomass that is received. The details of the weigh bridge is given below: <ul style="list-style-type: none"> <li>- SerialNumber:2008-043</li> <li>- Model Number: FSD-501</li> <li>- ToleranceValue:10Kg</li> </ul>
<b>QA/QC procedures to be applied</b>	The weigh bridge records could be tallied against transporters receipts or against the computer generated payment invoices. The weigh bridge is calibrated annually to ensure proper functioning. The calibration details are provided in the appendix-1
<b>Purpose of the data</b>	Not used in calculation of emission reduction. Used for cross checking purpose.
<b>Calculation method</b>	It is calculated based on the weight of the loaded truck and the empty truck.
<b>Comments</b>	All data will be kept for a minimum of 2 years in soft copies following issuance of certified emission reductions or the end of the crediting period, whichever is later.

<b>Data / Parameter</b>	$Q_{y,mustardstalk}$
<b>Data unit</b>	Tonnes
<b>Description</b>	Quantity of mustard stalk received in the project activity

Source of data	Plant records/log books
Description of measurement methods and procedures to be applied	<ul style="list-style-type: none"> <li>- All the biomass is received truck wise and is recorded on daily and collated on monthly basis.</li> <li>- Each truck that enters the site will be recorded at the weigh bridge installed at the factory.</li> </ul>
Frequency of monitoring/recording	Batch monitoring (every truck of biomass is monitored)
Value monitored	196319
Monitoring equipment	Weigh bridge is used to measure the weight of the biomass that is received. The details of the weigh bridge is given below: <ul style="list-style-type: none"> <li>- SerialNumber:2008-043</li> <li>- Model Number: FSD-501</li> <li>- ToleranceValue:10Kg</li> </ul>
QA/QC procedures to be applied	The weigh bridge records could be tallied against transporters receipts or against the computer generated payment invoices. The weigh bridge is calibrated annually to ensure proper functioning. The calibration details are provided in the appendix-1.
Purpose of the data	Not used in calculation of emission reduction. Used for cross checking purpose.
Calculation method	It is calculated based on the weight of the loaded truck and the empty truck.
Comments	All data will be kept for a minimum of 2 years in soft copies following issuance of certified emission reductions or the end of the crediting period, whichever is later.

Data / Parameter	$BF_{k,y, cottonstalk}$
Data unit	Tonnes of cotton stalk
Description	Quantity of biomass residue(cotton stalk) combusted in project plant during the year monitoring period
Source of data	Plant records
Description of measurement methods and procedures to be applied	Biomass received is analyzed for moisture content. Analysis is carried out in the laboratory at the project site itself. The quantity of biomass is measured by weighbridge at the project site.
Frequency of monitoring/recording	Batch monitoring(every truck of biomass is monitored)
Value monitored	526884

<b>Monitoring equipment</b>	Periodically quantity of fuel actually used on a particular day is weighed on the weight bridge and data recorded. The same is also crosschecked with monthly stock balance. The details of the weigh bridge used for the measurement are already furnished above.
<b>QA/QC procedures to be applied</b>	Biomass combusted in the boilers is shall be cross checked through an energy balance undertaken on quarterly basis for the project activity. This will include the calculation of the both types of biomass residues used in the boilers.  Please refer the calibration details of the weigh bridge provided in the appendix-1
<b>Purpose of the data</b>	Not used in calculation of emission reduction. Used for cross checking purpose.
<b>Calculation method</b>	It is calculated based on the weight of the loaded truck and the empty truck.
<b>Comments</b>	All data will be kept for a minimum of 2 years in soft copies following issuance of certified emission reductions or the end of the crediting period, whichever is later.

<b>Data / Parameter</b>	<b>BF<sub>k,y,mustardstalk</sub></b>
<b>Data unit</b>	Tonnes of mustard stalk
<b>Description</b>	Quantity of biomass residue (mustard stalk) combusted in project plant during the monitoring period.
<b>Source of data</b>	Plant records
<b>Description of measurement methods and procedures to be applied</b>	Biomass received is analyzed for moisture content. Analysis is carried out in the laboratory at the project site itself. The quantity of biomass is measured by weighbridge at the project site.
<b>Frequency of monitoring/recording</b>	Batch monitoring(every truck of biomass is monitored)
<b>Value monitored</b>	167454
<b>Monitoring equipment</b>	Periodically quantity of fuel actually used on a particular day is weighed on the weight bridge and data recorded. The same is also crosschecked with monthly stock balance. The details of the weigh bridge used for the measurement are already furnished above.
<b>QA/QC procedures to be applied</b>	Biomass combusted in the boilers is shall be cross checked through an energy balance undertaken on quarterly basis for the project activity. This will include the calculation of the both types of biomass residues used in the boilers.  Please refer the calibration details of the weigh bridge provided in the

	appendix-1
<b>Purpose of the data</b>	Not used in calculation of emission reduction. Used for cross checking purpose.
<b>Calculation method</b>	It is calculated based on the weight of the loaded truck and the empty truck.
<b>Comments</b>	All data will be kept for a minimum of 2 years in soft copies following issuance of certified emission reductions or the end of the crediting period, whichever is later.

<b>Data / Parameter</b>	<b>AVD<sub>y</sub></b>
<b>Data unit</b>	km
<b>Description</b>	Average round trip distance (from and to) between biomass fuel supply sites and the project site
<b>Source of data</b>	Plant records
<b>Description of measurement methods and procedures to be applied</b>	Factory records maintained at the factory gate at the time of receipt of biomass residues at factory include the distance from the collection centers and weight carried out.
<b>Frequency of monitoring/recording</b>	Batch monitoring (every truck carrying biomass will be monitored)
<b>Value monitored</b>	78.8 (Average for the entire monitoring period)
<b>Monitoring equipment</b>	Plant records for the consignment that enters and the distance of the various centers from where it comes.
<b>QA/QC procedures to be applied</b>	Record of all distance of various collection centre from projects is maintained separately to crosscheck the distance travelled for each consignment.
<b>Purpose of the data</b>	To calculate project emission
<b>Calculation method</b>	Total Round Trips of Cotton Straw and Mustard Straw/total no.of Trips of Cotton Straw and Mustard Straw
<b>Comments</b>	All data will be kept for a minimum of 2 years in softcopies following issuance of certified emission reductions or the end of the crediting period, whichever is later.

<b>Data / Parameter</b>	<b>N<sub>y</sub></b>
<b>Data unit</b>	-
<b>Description</b>	Number of truck trips for the transportation of biomass.

Source of data	Plant records
Description of measurement methods and procedures to be applied	All consignments shall be entered in the log-book maintained at the main gate by security persons.
Frequency of monitoring/recording	Batch monitoring (every truck carrying biomass will be monitored)
Value monitored	91589 (for the entire monitoring period)
Monitoring equipment	Plant records for the number of consignment that enters
QA/QC procedures to be applied	These shall be crosschecked with the bills produced by suppliers for supply of biomass residues.
Purpose of the data	To calculate project emission.
Calculation method	-
Comments	All data will be kept for a minimum of 2 years in soft copies following issuance of certified emission reductions or the end of the crediting period, whichever is later.

### 4.3 Monitoring Plan

As per the requirement of monitoring methodology, following parameters are monitored:

- Net electricity exported to grid.
- Quantity of each of biomass (cotton stalk and mustard stalk) received in project activity.
- Quantity of each of biomass (cotton stalk and mustard stalk) consumed in project activity.
- Average round trip distance between the point of fuel supply sites and the project site.
- Number of truck trips in a day.

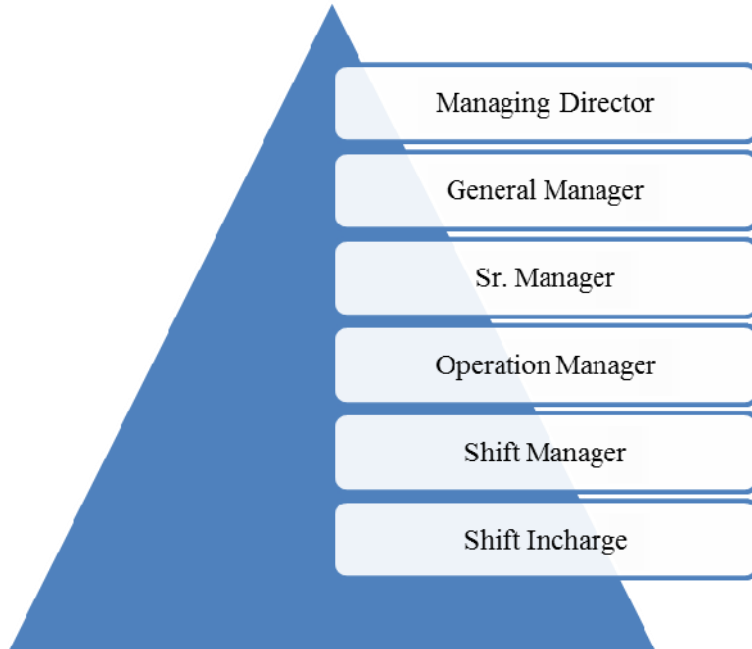
All the above parameters have been monitored using the meters as detailed in the monitoring plan of the registered PDD.

#### Metering and related issues:

- The generated electricity is purchased by the state electricity utility of Punjab. The meters are therefore sealed and managed by the state electricity utility.
- The electricity generation measurements are required by the utility and the project proponent to assess electricity sales revenue.
- The power generation of the plant is metered by electronic Trivector main meter. The net electricity exported to the national grid at a PSEB sub-station shall be monitored through a 2-way Trivector meter.

- There are check meters installed at site as well. Both electricity meters measuring power export have been calibrated as per outlines provided in the PPA which is annually. The weighbridge at the entrance that measures the quantity of biomass that comes is also calibrated on annual basis.
- Record of quantity of biomass residue procured is maintained at the factory gate and later transferred on daily basis to central record maintenance system for the GHG emission reduction activity.
- Records Receipts maintained at the main gate includes the type of biomass, name of collection Centre, net weight of biomass, date and time of receipt of consignment etc. This forms basis for monitoring the number of truck trips and the average distance travelled to determine the project emissions.
- There are no probabilities that project activity can lead to unpredicted GHG emissions, however, occurrence of any such possibility of emission will be monitored and corrective action taken. No need is envisaged for emergency preparedness in data monitoring considering unpredicted emissions.
- All the readings are recorded by shift in charge which are verified at difference hierarchy level to avoid any discrepancy or mismatch in the recorded data. The readings noted by the shift in charge are verified by the shift manager which are further rechecked by the general manager.
- The record after being verified by the general manger is handed over to the senior manager who is assigned with the role CDM coordinator to cross verify the data in reference to the registered monitoring plan for emission reduction calculation.
- The monthly verified data is finally handed over to the managing director who after overall verifies the data.
- The persons involved in monitoring and recording the parameters are provided training at regular intervals.

**Basic Organizational Structure:**



**Roles and responsibilities**

Designation	Responsibilities
Managing Director	<ul style="list-style-type: none"> <li>✓ Verification of the monthly data on the operational details of the project activity</li> </ul>
Senior Manager	<ul style="list-style-type: none"> <li>✓ Responsible for the operations of GHG activity</li> <li>✓ Maintenance of all records pertaining to CDM activity</li> <li>✓ To prepare monthly reports</li> </ul>
General Manager	<ul style="list-style-type: none"> <li>✓ Verification of the daily data</li> <li>✓ Verification of monthly report</li> <li>✓ Ensure that all persons required to monitor The project emissions are trained and competent</li> </ul>
Shift Engineer	<ul style="list-style-type: none"> <li>✓ To verify the readings taken by the shift in charge at the end of the shift</li> <li>✓ To take action on the error reported</li> </ul>

Shift In charge	<ul style="list-style-type: none"> <li>✓ To note the hourly reading</li> <li>✓ Report error in the system, if any</li> </ul>
-----------------	--

## 5 QUANTIFICATION OF GHG EMISSION REDUCTIONS AND REMOVALS

### 5.1 Baseline Emissions

#### Emission reductions due to displacement of electricity

The baseline emissions due to displacement of electricity are determined by the following equation,

$$BE_y = E_{GBL,y} * EFCO_2$$

Where,

- $BE_y$  is Baseline Emissions in year  $y$ ;  $tCO_2$
- $E_{GBL,y}$  is Energy baseline in year  $y$ ; kWh
- $EFCO_2$  is  $CO_2$  Emission Factor in year  $y$ ;  $tCO_2e/kWh$

#### Determination of $CO_2$ emission factor ( $EFCO_2$ )

The emission factor for the displacement of electricity corresponds to grid emission factor ( $EFCO_2 = EF_{grid}$ ). The grid emission factor ( $EF_{grid}$ ) has been fixed ex-ante and has been determined as per the guidance provided in “Tool to calculate the emission factor for an electricity system Version 1.1” (as per CEA  $CO_2$  Baseline database for Indian Power sector, Version 5). The grid emission factor has been taken from the Central Electricity Authority, India “ $CO_2$  baseline database, Version 5, November 2009. (Source: <http://www.cea.nic.in>). As per the CEA report the Northern Regional Grid was synchronized with the integrated Eastern, North Eastern and Western Grid in August, 2006 and the four regional grids have since been operating in synchronous mode. Hence the grid emission for northern grid is now determined from the synchronous grid emission factor of Northern, Eastern, Western and North Eastern Grids (NEWNE)<sup>2</sup>. The value is determined as follows:

Simple Operating Margin( $tCO_2/MWh$ )			
Grid	2006-07	2007-08	2008-09
NEWNE	1.01	1.00	1.01
Southern	1.00	0.99	0.97

<sup>2</sup> The NEWNE grid are now integrated with the national grid to form a single grid.

India	1.01	1.00	1.01
-------	------	------	------

Build Margin (tCO <sub>2</sub> /MWh)			
Grid	2006-07	2007-08	2008-09
NEWNE	0.63	0.60	<b>0.68</b>
Southern	0.70	0.71	0.82
India	0.65	0.63	0.71

Combined Margin = Average Simple OM x 0.50 + BM x 0.50 = 1.01 x 0.50 + 0.68 x 0.50 = 0.84  
 (Source: CEA, CO<sub>2</sub> baseline database, version 5, November 2009)

#### Determination of net electricity generation (EG<sub>y</sub>)

As per the AMS-I.D. Version 15, *EGBL<sub>y</sub>* corresponds to Energy baseline in year, *y*; kWh. Under the project activity this will be the net quantity of electricity exported to grid.

$$EGBL_y = EG_{export,y}$$

The baseline emission calculation for one sample vintage, 2011 is produced as below.

$$\begin{aligned} BE_y &= EGBL_y * EFCO_2 \\ &= 59473 \text{ MWh} * 0.84 \text{ tCO}_2/\text{MWh} \\ &= 49.957 \text{ tCO}_2 \end{aligned}$$

The calculation of baseline emission for the entire monitoring period is tabulated as below.

Year	Quantity of Electricity exported to the grid by the project			Baseline Emission (BE <sub>y</sub> )
	Export	Import	Net Export	
2011	59977	504	59473	49,957
2012	73167	524	72643	61,020
2013	73301	637	72664	61,037
2014	80317	488	79829	67,056
2015	87146	465.1	86680.9	72,811
2016	85808	438	85370	71,710
2017	17253	41	17212	14,458
<b>Total</b>	<b>476969</b>	<b>3097</b>	<b>473872</b>	<b>398049</b>

## 5.2 Project Emissions

For most renewables the project emissions is considered to be zero as per applicable methodology. But PP has demonstrated with a conservative approach to demonstrate the possibility of emissions that may take place because of transportation of raw material. Although estimation of project emission indicates that all raw materials will be received by trucks, but it is highly probable that use of trolleys and bullock cart may be used for such low distance transmissions and these will be mentioned separately and excluded from possible project emissions. The possible project emissions account only due to transportation of biomass residue to project site. The following equation is used to calculate the total project emissions of the project activity during the monitoring period:

$$PET_y = N_y * AVD_y * EF_{km,CO_2}$$

Where,

$PET_y$  is CO<sub>2</sub> emissions during the year  $y$  due to transport of the biomass residues to the project plant (tCO<sub>2</sub>/yr)

- $N_y$  is Number of Truck trips per during the monitoring period
- $AVD_y$  is Average round trip distance (from and to) between the biomass residue fuel supply sites and the site of the project plant during the monitoring period (km)
- $EF_{km,CO_2}$  is Average CO<sub>2</sub> emission factor for the trucks measured during the year,  $y$  (tCO<sub>2</sub>/km)

The project emission calculation for one sample vintage, 2011 is produced as below.

$$PET_y = N_y * AVD_y * EF_{km,CO_2}$$

$$= 9498 \text{ (trips)} * 79.5 \text{ km/trip} * 0.00044 \text{ tCO}_2/\text{km}$$

$$= 333 \text{ tCO}_2$$

The calculation of project emission for the entire monitoring period is tabulated as below.

Year	Total number of trucks received	Avg. distance travelled km/trip	Project Emission (PE <sub>y</sub> ) (tCO <sub>2</sub> )
2011	9498	79.5	333
2012	12198	78.4	421
2013	16404	80.4	581
2014	17545	78.0	603
2015	15672	79.1	546
2016	18834	77.2	640
2017	1438	82.0	52
Total	91589		3,176

### 5.3 Leakage

As per the applied approved methodology, AMS-I.D.(Version15),,leakage is to be considered if the energy generating equipment is transferred from another activity. The project activity is a green field biomass based power generation facility and the energy generating equipment used in the project activity has not been transferred from any other activity.

As per the attachment C to Appendix B it has been specified that for the small scale project activity, the leakage emission sources can be identified as follows:

As the project activity utilizes only cotton stalk and mustard stalk (biomass residue), the implementation of project activity did not lead to shifting of pre-project activities.

The biomass being used in the project activity is a waste generated from the cotton and mustard crop. This waste would have anyways been generated even in the absence of the project activity and would have burnt in the field in uncontrolled manner. The plant uses the waste generated and does not need application of fertilizer and clearance of land. Hence there are no emissions due to the same.

The only possible source of leakage in the project activity can be competing uses of biomass - The biomass residue may in the absence of the project activity be used elsewhere, for the same or a different purpose. To establish the same, UBEPL hired an independent agency to carry out a biomass residue assessment study in the surrounding area (surrounding area refers to the area within 50 km radius of the project activity). The results of the study pertaining to the surplus availability of cotton stalk and mustard stalk are available in the subject study report.

The biomass assessment study demonstrates that the quantity of available biomass in the region is larger than 25% after considering the biomass residue utilization in the area; hence this source of leakage is neglected.

### 5.4 Net GHG Emission Reductions and Removals

The net emission reduction calculation for one sample vintage, 2011 is produced as below.

$$\begin{aligned}
 ER_y &= BE_y - PE_y - L_y \\
 &= 49,957 \text{ tCO}_2 - 333 \text{ tCO}_2 - 0 \text{ tCO}_2 \\
 &= 49,624 \text{ tCO}_2
 \end{aligned}$$

The net GHG emission reduction for the entire monitoring period is produced as below;

Year	Baseline emissions or	Project emissions or removals (tCO <sub>2</sub> e)	Leakage emissions (tCO <sub>2</sub> e)	Net GHG emission reductions or

	removals (tCO <sub>2e</sub> )			removals (tCO <sub>2e</sub> )
2011	49,957	333	0	49,624
2012	61,020	421	0	60,599
2013	61,037	581	0	60,456
2014	67,056	603	0	66,453
2015	72,811	546	0	72,265
2016	71,710	640	0	71,070
2017	14,458	52	0	14,406
<b>Total</b>	<b>398,049</b>	<b>3,176</b>	<b>0</b>	<b>394,873</b>

**Comparison of Emission Reduction with registered project design.**

Annual Emission reduction as per registered project design	74891
Start date of current monitoring period	01-03-2011
End date of current monitoring period	28-02-2017
Total number of days involved in the current monitoring period	2192
Estimated emission reduction as per registered PD for the current MP	449756
Difference in Emission reduction	-54,883
% Difference in Emission reduction	-12.20%

# APPENDIX 1: CALIBRATION DETAILS

Details of the energy meters used in monitoring, of the parameter, Quantity of Electricity exported to the grid by the project during the monitoring period are furnished as below.

Meters	Type	Accuracy class	Serial number	Calibration date		
Main Meter	Trivector meter of L & T	0.5s	8043957 <sup>3</sup>	06-10-2011	04-10-2012	28-09-2013
Check meter	Trivector meter of L & T	0.5s	8043951 <sup>4</sup>	08-10-2011	04-10-2012	28-09-2013
Main meter	Trivector meter of L & T	0.2s	13196703	05-10-2014	09-05-2015	07-05-2016
Main meter	Trivector meter of L & T	0.2s	12093212	05-10-2014	09-05-2015	07-05-2016

Details of the weigh bridge used to measure quantity of the biomass are as below.

Serial Number	Model Number	Tolerance Value	Calibration date				
2008-043	FSD-501	10 Kg	12-07-2012	09-07-2013	08-07-2014	01-07-2015	14-06-2016

<sup>3</sup> Replaced on 05/03/2014

<sup>4</sup> Replaced on 05/03/2014