



**Verified Carbon  
Standard**

## DISTRIBUTION OF IMPROVED COOK STOVE - PHASE V



Document Prepared by EKI Energy Services Limited

Contact Information: Office no.201, Plot 48, Scheme 78 Part 2 Vijay Nagar, Near  
Brilliant Convention Centre Indore- 452010 (M.P. India)

<b>Project Title</b>	Distribution of Improved cook stove - Phase V
<b>Version</b>	04
<b>Report ID</b>	VVER 349
<b>Date of Issue</b>	06-September-2022
<b>Project ID</b>	VCS 2426
<b>Monitoring Period</b>	01-October-2012 to 30-Septmeber-2017 (First and Last date included)
<b>Prepared By</b>	Mr. Pankaj Rajpoot
<b>Contact</b>	Project Manager Operations – GHG Services EKI Energy Services Limited Email ID : registry@enkingint.org T +91 731 42 89 086, M +91 7828347589 Address: Office no. 201, Plot 48, Scheme 78 part 2, Vijay Nagar Indore - 452010 (M.P, India) Website <a href="http://www.enkingint.org">www.enkingint.org</a>

## CONTENTS

<b>1</b>	<b>PROJECT DETAILS.....</b>	<b>3</b>
1.1	Summary Description of the Implementation Status of the Project .....	3
1.2	Sectoral Scope and Project Type .....	5
1.3	Project Proponent .....	5
1.4	Other Entities Involved in the Project .....	5
1.5	Project Start Date .....	5
1.6	Project Crediting Period .....	6
1.7	Project Location .....	6
1.8	Title and Reference of Methodology .....	13
1.9	Participation under other GHG Programs .....	14
1.10	Other Forms of Credit.....	14
1.11	Sustainable Development.....	14
<b>2</b>	<b>SAFEGUARDS .....</b>	<b>15</b>
2.3	AFOLU-Specific Safeguards .....	17
<b>3</b>	<b>IMPLEMENTATION STATUS .....</b>	<b>17</b>
3.1	Implementation Status of the Project Activity .....	17
3.2	Deviations .....	20
3.3	Grouped Projects .....	20
<b>4</b>	<b>DATA AND PARAMETERS.....</b>	<b>20</b>
4.1	Data and Parameters Available at Validation .....	20
4.2	Data and Parameters Monitored.....	23
4.3	Monitoring Plan.....	31
<b>5</b>	<b>QUANTIFICATION OF GHG EMISSION REDUCTIONS AND REMOVALS .....</b>	<b>40</b>
5.1	Baseline Emissions .....	40
5.2	Project Emissions .....	45
5.3	Leakage.....	45
5.4	Net GHG Emission Reductions and Removals.....	45

# 1 PROJECT DETAILS

## 1.1 Summary Description of the Implementation Status of the Project

The project activity (usage of improved cook stoves) has been deployed to facilitate clean cooking practice and reduce health risk due to indoor air pollution<sup>1</sup> along with reduction of drudgery amongst the tribal households (Schedule Tribe) and families living below the poverty level (BPL category<sup>2</sup>) across Gadchiroli, Chandrapur and Nagpur Districts in Maharashtra. The usage of improved cook stoves through replacement of inefficient traditional cook stove contributes towards reduction of greenhouse gas emission, reduction of by-products of incomplete combustion like black carbon and conservation of fuel wood resulting in prevention of forest degradation. The higher efficient portable, single pot improved cook stoves distributed under the project activity has changed the prevailing practice of usage of traditional cook stoves across selected households in rural areas across Gadchiroli, Chandrapur and Nagpur Districts in Maharashtra.

It is worthwhile to note that firewood and wood chips contributes as major cooking fuel amongst rural households in India. According to the NSSO<sup>3</sup> 61<sup>st</sup> round survey, a considerable percentage of rural population of Maharashtra relies upon fire wood for cooking and the percentage is substantially much higher amongst the lower MPCE (Monthly Per Capita Expenditure) group. Since, the beneficiary selected under the project belongs to BPL and ST category of population in terms of capacity of expenditure therefore; improved cook stove use results in substantial fuel wood saving as this section is the major consumer of fuel wood.

The improved cook stoves distributed under the project activity are more efficient with thermal efficiency of 29.88%<sup>4</sup> as compared to traditional stoves with thermal efficiency of around 10%<sup>5</sup>. Owing to higher efficiency, use of efficient improved cook stove results in reduced consumption of non-renewable biomass in compared to baseline by minimizing thermal energy losses and facilitating complete combustion. Reduced consumption/ combustion of non-renewable biomass results in reduction of GHG emission.

### **Technology Employed**

The cook stove deployed under the project activity<sup>6</sup> is single pot, portable, metallic, improved biomass cook stoves<sup>7</sup> made of cast iron for combustion of solid biomass. The improved cook stoves are manufactured in accordance to IS 13152, Part-1: 1991, CPRI Design Type I<sup>8</sup>

---

<sup>1</sup> Household Cook stoves, Environment, Health and Climate Change – World Bank (Executive summary, page 9-11)

<sup>2</sup> As per the article in The Hindu (<http://www.thehindu.com/news/national/article3013870.ece>) dated March 20, 2012 anyone with daily consumption expenditure below Rs. 22.42 is categorised under BPL. The article depicts of 24.5% of the total population in Maharashtra under BPL in 2009-10.

<sup>3</sup>National Sample Survey Office

<sup>4</sup> Thermal Efficiency Test Report of Improved Cook stove tested at Biomass Cook stove Testing Centre, Dept. of Renewable Energy Sources, Udaipur

<sup>5</sup> Paragraph 6 (Option 2) of approved applicable methodology AMS –II.G., Version 03

<sup>6</sup> Manufactured by Vikram Stoves and Fabricators ( Ministry of New and Renewable Energy) approved manufacturer and distributor of improved cook stoves) selected by RDWC Department, Government of Maharashtra for distribution of improved cook stoves amongst identified beneficiaries.

<sup>7</sup> MNRE accredited system -<http://mnre.gov.in/schemes/decentralized-systems/national-biomass-cookstoves-initiative/>

<sup>8</sup> The design of the cook stove is certified by Bureau of Indian Standards relating to its appropriateness to, IS 13152 (Part1).

standard. The design ensures complete combustion of biomass. The cook stove is tested for thermal efficiency (29.88%) as per water boiling test protocol specified in IS 13152, Part 1: 1991.

### **Measures undertaken**

The Rural Development and Water Conservation (RDWC) Department, Government of Maharashtra is involved in promoting betterment of living standard for the tribal household (ST) and families living Below Poverty Line (BPL) in villages of Maharashtra. The department as a part of its aforesaid programme selects households from amongst the ST and BPL category depending upon level of vulnerability (assessed on basis of 13 parameters: Category and size of usable land, Type of house, Availability of regular usable clothes, Protection of food or food security, Cleanliness, Ownership of required goods, Heights /Level of literacy, Family working capacity, Source of livelihood goods, Number of children in age group (5 to 14), Type of bankruptcy, reason for staying away from family of Earning member, Choice of help /Yojana)<sup>9</sup> and provide financial assistance to facilitate better and hygienic living standard. The household selected for financial assistance under the programme is provided with an improved cook stove system. The household considered as end users of cook stoves under the project activity are poor enough to afford for procurement of improved cook stoves and are also least interested towards similar investment as wood is available for free. So, in absence of the improved cook stove disseminated under the project activity the household would have continued with use of traditional cook stoves. Since, the project activity is conceived under the program of Govt. of Maharashtra which provides cook stove only to BPL and ST category household so; there is no chance of cook stove to be distributed to non-baseline household. The identification of beneficiaries and distribution of cook stoves comes under the preview of the Rural Development and Water Conservation Department.

The project activity includes dissemination of 14,530 Nos. improved cook stoves<sup>10</sup> amongst Below Poverty Line (BPL) and Scheduled Tribes (ST) households in rural areas of Gadchiroli, Chandrapur and Nagpur Districts under Nagpur Division in Maharashtra upon signing of the end user Tripartite Agreement<sup>11</sup>. The project through conservation of non-renewable biomass was estimated to result in an greenhouse gas emission reduction of 13,062 tCO<sub>2</sub>e annually (ex-ante). The revenue from carbon financing was conceived in deciding upon the capital cost as well as to meet up the cost towards imparting awareness and training, periodic maintenance<sup>12</sup> and post lifetime replacement within the crediting period.

The amount of emission reductions achieved for the current monitoring period is 61,959 tCO<sub>2</sub>e.

The start date of the project activity is 01-October-2012. Since the project activity of improved cook stove usage by the end user does not require any construction or significant pre-project implementation, nor financial commitment on the part of end user therefore the

<sup>9</sup> Criteria issued by Department of rural Development, Government of Maharashtra

<sup>10</sup> Each of the cook stoves is included for the purpose of emission reduction calculation from the day on which it is distributed to the beneficiary and the end user agreement is signed.

<sup>11</sup> Tripartite Agreement is for transfer the emission reduction right to the Project Participant by each beneficiaries/end users and is signed amongst end user, GKEMPL and Vikram Stoves. The tripartite agreement authorizes M/s G K Energy Marketers Pvt. Ltd (hereafter referred to as GKEMPL) by Vikram Stoves (manufacturer of improved cook stoves) and the end users for securing of carbon finance

<sup>12</sup> "The Indian stove programme: an insider's view – the role of society, politics, economics and education" by Bhaskar Sinha, National Institute of Science, Technology & Development Studies (NISTADS), CSIR, New Delhi outlines that the woman are least interested for maintenance as they do not perceive the usefulness of the stove and revert back to traditional practice when the cook stove becomes non-functional therefore timely operation and maintenance are vital.

real action pertaining to the earliest date of distribution of improved cook stoves under the project activity is considered as the start date as per project start date definition of section 3.7 of the VCS Standard V.4.1.

## 1.2 Sectoral Scope and Project Type

- Sectoral Scope: 3- Energy demand
- Project Type: Type II.G.

The project activity fulfills the applicability criteria of small- scale project activity, Type II – Energy Efficiency Improvement Projects, Category G –‘Energy efficiency measures in thermal applications of non-renewable biomass’ of the ‘Indicative Simplified Baseline and Monitoring Methodologies for Selected Small-scale Project Activity Categories’.

This is non-AFLOU type of project

## 1.3 Project Proponent

<b>Organization name</b>	M/s G K Energy Marketers Pvt. Ltd
<b>Contact person</b>	Mr. Gopal Kabra
<b>Title</b>	Authorized Signatory
<b>Address</b>	Lokmanya Nagar, LBS Road, Flat No.- 350, Building No.- 25,Ground Floor, Pune, Maharashtra – 411030 India
<b>Telephone</b>	+91-997045
<b>Email</b>	gopal@energymarketers.in

## 1.4 Other Entities Involved in the Project

<b>Organization name</b>	EKI Energy Services Limited
<b>Role in the Project</b>	Project Consultant
<b>Contact person</b>	Mr. Pankaj Rajpoot
<b>Title</b>	Project Manager- Operations
<b>Address</b>	Office No 201, Plot No 48, Scheme 78, Vijay Nagar Part- II, Indore 452010, India
<b>Telephone</b>	+91- 7828347589
<b>Email</b>	<a href="mailto:registry@enkingint.org">registry@enkingint.org</a>

## 1.5 Project Start Date

The start date of the project activity is 01-October-2012.

The project activity relating to improved cook stove usage by the end user does not require any construction or significant pre-project implementation, nor financial commitment on the part of end user. The real action pertaining to the earliest date of handover of improved cook stoves to beneficiary (also considered as date of onset of GHG emission reductions) under the project activity is considered as the start date as per project start date definition under paragraph 3.7 of the VCS Standard.

The date of supply/ receipt of first lot of improved cookstoves from manufacturer to the regional office of the line department was considered as start date under the CDM registered PDD (evidenced through acknowledgement of the delivery receipt of the line department) as per CDM definition of Start Date. The start date referred to in the registered CDM-PDD was mirrored in the VCS PD. Since the date does not resembles to handover of the cookstoves to beneficiary and does not result in onset of actual emission reduction therefore the same was not considered as start date under VCS mechanism and therefore revised with date of distribution/ handover of improved cookstoves to beneficiary.

## 1.6 Project Crediting Period

The crediting period of the project activity is for 10 years (Fixed).

The length of the first crediting period is 01-October-2012 to 30-September-2022 (both dates inclusive).

As per errata and clarification, a project is deemed to have met the timelines where Verra confirmed (in writing, to the project proponent or an authorized representative) the project's eligibility on or before 4-February-2021. The listing process has been completed before 04-February-2021 and hence the errata and clarifications are not applicable.

## 1.7 Project Location

The project is located in state Maharashtra, India.

Nagpur Division, Gadchiroli, Chandrapur and Nagpur Districts

District	Gadchiroli	Chandrapur	Nagpur
Latitude	18.43 - 21.50 °N	18.40 - 20.50 °N	20.35 - 21.44 °N
Longitude	79.45 - 80.53 °E	78.50 - 80.60 °E	75.15 - 79.40 °E

Figure 1: Map of India



Figure: Map of Maharashtra

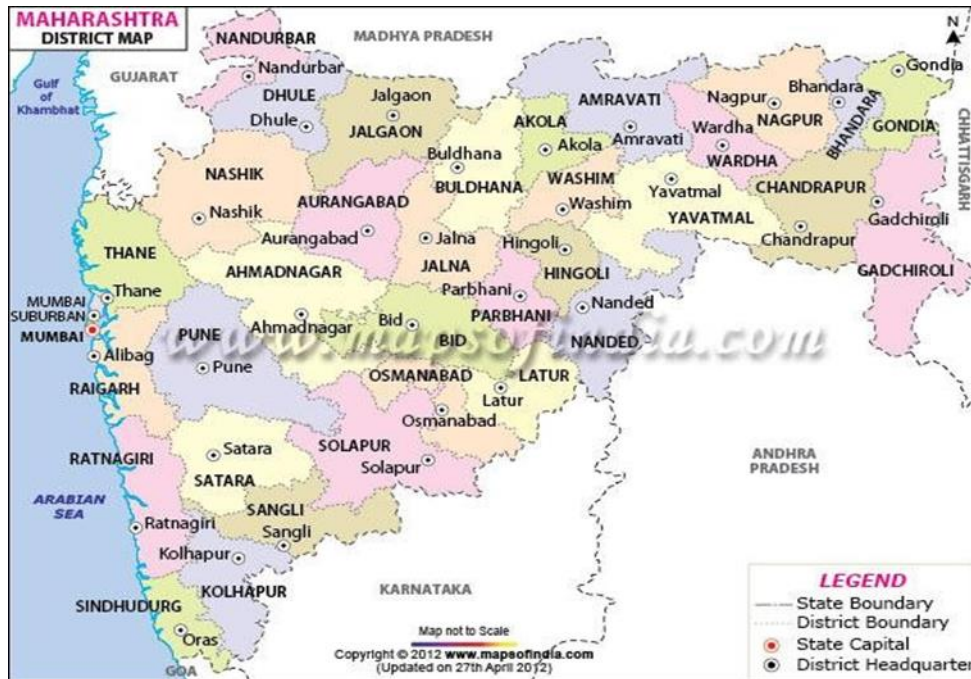
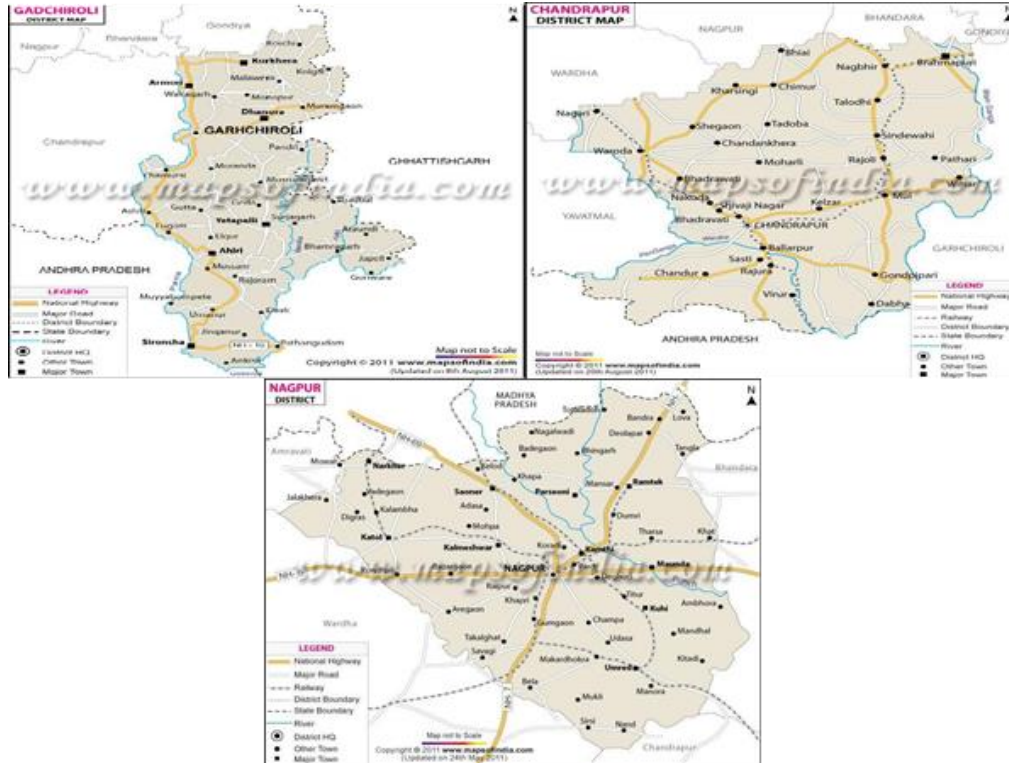


Figure: Map of Gadchiroli, Chandrapur and Nagpur



District wise list of Village included in the table below:

District	Nagpur
Taluka	Hingna

Sr.	Name of the village	Taluka
1	Adegaon	Hingna
2	Agargaon	Hingna
3	Ajangaon	Hingna
4	Ambazari	Hingna
5	Amgaon	Hingna
6	Asola	Hingna
7	Bhansoli	Hingna
8	Bhansuli	Hingna
9	Bhivkund	Hingna
10	Bibi	Hingna
11	Bid-borgaon	Hingna
12	Bid-ganeshpur	Hingna
13	Chauki	Hingna
14	Chicholi	Hingna

<b>Sr.</b>	<b>Name of the village</b>	<b>Taluka</b>
15	Dabha	Hingna
16	Datala	Hingna
17	Degma bk	Hingna
18	Degma kh	Hingna
19	Devali	Hingna
20	Devali	Hingna
21	Devali	Hingna
22	Devali	Hingna
23	Devalipeth	Hingna
24	Dhanoli	Hingna
25	Dhanoli	Hingna
26	Dhanoli	Hingna
27	Dhokarda	Hingna
28	Digdoh	Hingna
29	Dongargaon	Hingna
30	Gangapur	Hingna
31	Gaurala	Hingna
32	Ghodeghat	Hingna
33	Gidamgad	Hingna
34	Girola	Hingna
35	Gothangaon	Hingna
36	Gumgaon	Hingna
37	Haladgaon	Hingna
38	Hingna	Hingna
39	Itewahi	Hingna
40	Junewani	Hingna
41	Kajali	Hingna
42	Kanholi	Hingna
43	Kanholi	Hingna
44	Kanholibara	Hingna
45	Katangdhara	Hingna
46	Kavdas	Hingna
47	Khadka	Hingna
48	Khadki	Hingna
49	Khairi	Hingna
50	Khairi bk	Hingna
51	Khairi kh	Hingna

Sr.	Name of the village	Taluka
52	Khairy kh	Hingna

District	Chandrapur
Taluka	Chandrapur

Sr.	Name of the village	Taluka
1	Adegaon	Chandrapur
2	Agarzari	Chandrapur
3	Ajayapur Raiyyatwari	Chandrapur
4	Ambhora	Chandrapur
5	Anturla	Chandrapur
6	Arwat	Chandrapur
7	Belsani	Chandrapur
8	Bor Rith	Chandrapur
9	Borda Indarpawar	Chandrapur
10	Chak Borda	Chandrapur
11	Chak Nimbala	Chandrapur
12	Chak Pimpal Khut	Chandrapur
13	Chandsurla	Chandrapur
14	Chandur	Chandrapur
15	Chargaon	Chandrapur
16	Chichala	Chandrapur
17	Chichpali	Chandrapur
18	Chincholi	Chandrapur
19	Chorala	Chandrapur
20	Chorgaon	Chandrapur
21	Datala	Chandrapur
22	Dewada	Chandrapur
23	Dhanora	Chandrapur
24	Doni	Chandrapur
25	Gawarala Rith	Chandrapur
26	Ghanta Chauki	Chandrapur
27	Gondsawari Rayyatwari	Chandrapur
28	Haldi	Chandrapur
29	Hingnala	Chandrapur
30	Jambharala	Chandrapur

<b>Sr.</b>	<b>Name of the village</b>	<b>Taluka</b>
31	Junona Rayyatwari	Chandrapur
32	Karwa	Chandrapur
33	Khutala	Chandrapur
34	Kitali	Chandrapur
35	Kolasa	Chandrapur
36	Kosara	Chandrapur
37	Lakhamapur	Chandrapur
38	Lohara	Chandrapur
39	Mahadwadi	Chandrapur
40	Mahakurla	Chandrapur
41	Mamala Mokasa	Chandrapur
42	Marada	Chandrapur
43	Marar Sawali Chak	Chandrapur
44	Mhasala Rith	Chandrapur
45	Mhatardevi	Chandrapur
46	Moharli	Chandrapur
47	Morwa	Chandrapur
48	Nagala	Chandrapur
49	Nagala	Chandrapur
50	Nagpur	Chandrapur
51	Nandgur	Chandrapur
52	Neri	Chandrapur

District	Gadchiroli,
Taluka	Chamorshi

<b>Sr.</b>	<b>Name of the village</b>	<b>Taluka</b>
1	Abapur	Chamorshi
2	Adyal	Chamorshi
3	Alapalli Masahat	Chamorshi
4	Amboli	Chamorshi
5	Amgaon Chak No.1	Chamorshi
6	Amgaon Chak No.2	Chamorshi
7	Amgaon Mahal	Chamorshi
8	Anandgram	Chamorshi
9	Anantpur	Chamorshi

10	Ankhoda	Chamorshi
11	Ashti Nokewada	Chamorshi
12	Bahadupur	Chamorshi
13	Bamhanidev	Chamorshi
14	Bamhanpeth	Chamorshi
15	Bandhona	Chamorshi
16	Bawanchuwa	Chamorshi
17	Belgatta	Chamorshi
18	Belgatta Chak	Chamorshi
19	Bhadbhidi alias Bilaspur	Chamorshi
20	Bhadbhidi Mokasa	Chamorshi
21	Bhendala	Chamorshi
22	Bhendikanhar	Chamorshi
23	Bhikshimal	Chamorshi
24	Bhivapur	Chamorshi
25	Bhoganbodi	Chamorshi
26	Chakalpeth	Chamorshi
27	Chamorshi	Chamorshi
28	Chandankhedhi	Chamorshi
29	Chandankhedhi	Chamorshi
30	Chandeshwar	Chamorshi
31	Chapalwada	Chamorshi
32	Chapalwada Chak	Chamorshi
33	Chaparala	Chamorshi
34	Chaudampalli	Chamorshi
35	Chitekanhar	Chamorshi
36	Chitranjanpur	Chamorshi
37	Darpanguda	Chamorshi
38	Dhampur	Chamorshi
39	Dhekani	Chamorshi
40	Dotkuli	Chamorshi
41	Durgapur	Chamorshi
42	Ekodi	Chamorshi
43	Farada	Chamorshi
44	Fokurdi	Chamorshi
45	Fuser	Chamorshi
46	Gahubodi	Chamorshi
47	Gandhinagar	Chamorshi

48	Ganpur Raiyyatwari	Chamorshi
49	Gauripur	Chamorshi
50	Ghargaon	Chamorshi
51	Ghot	Chamorshi
52	Gilgaon	Chamorshi
53	Giripeth	Chamorshi
54	Gundapalli	Chamorshi
55	Haladi	Chamorshi
56	Haladi Chak	Chamorshi
57	Haladiwahi	Chamorshi
58	Haldawahi Tola	Chamorshi
59	Hivergaon	Chamorshi
60	Illur	Chamorshi
61	Jairampur	Chamorshi
62	Jamgiri	Chamorshi
63	Janala Tukum	Chamorshi
64	Jangam Kurul	Chamorshi
65	Jawaharnagar	Chamorshi
66	Jaynagar	Chamorshi
67	Jogana	Chamorshi
68	Kadholi	Chamorshi
69	Kalamgaon	Chamorshi
70	Kanhalgaon	Chamorshi
71	Kanholi	Chamorshi
72	Kardel Tola	Chamorshi
73	Karkapalli Mal	Chamorshi
74	Khandala	Chamorshi
75	Khorda Chak	Chamorshi
76	Kishtapur	Chamorshi
77	Konsari	Chamorshi
78	Kothari	Chamorshi

## 1.8 Title and Reference of Methodology

Consolidated baseline methodology for “Energy efficiency measures in thermal applications of non-renewable biomass”; AMS II-G, Version 03.0.0 Sectoral Scope: 03, EB 60.

## 1.9 Participation under other GHG Programs

Project has been registered with UNFCCC under Clean Development Mechanism program, Registration reference number is 8725.

The Project is not rejected by any other GHG programs.

## 1.10 Other Forms of Credit

India is non-annex1 country and there is no compliance with an emission trading program or to meet binding limits on GHG emissions for this project activity. The project is registered under CDM with registration ID 8725. Project Proponent has submitted undertaking that they will not claim same GHG emission reductions of the project from CDM and VCS. Project Proponent would not use net GHG emission reductions by the projects for compliance with emission trading program to meet binding limits on GHG emissions. Project Proponent has also submitted an undertaking stating that they will not take REC benefits for the same Emission Reductions. Project Proponent has submitted undertaking for not availing other forms of environmental credit for the same crediting period under consideration. Project Participant is not taking REC benefits for the same emission reductions.

## 1.11 Sustainable Development

The project contribution towards sustainable development is established in line with the sustainable development indicator framed by the host country DNA:

### **Social benefits:**

1. Reduces drudgery of women and children of rural areas (due to reduced fuel wood use) by reducing time spent and distance travelled for fuel wood collection. Reduction in firewood requirement helps in spending more time in productive activities such as education, employment etc.
2. Improves overall health (particularly diseases related to respiratory system) of women and children by reducing smoke in the kitchen.

### **Environmental benefits:**

1. Improves the local environment by reducing rate of forest degradation /deforestation in the project area. Conservation of forest is not only reduce non-renewable biomass demand and also reduce soil erosion and loss of biodiversity as a consequence of deforestation.
2. Reduces emission of black carbon to the atmosphere.
3. Reduces Green-house gas emissions.

### **Economic benefits:**

1. Employment opportunities for local communities involved in monitoring, training of users, undertaking periodic maintenance and post life time replacement.
2. Reduces the expenditure involved in the pre project scenario for purchase of fuel wood.

### **Technological benefits:**

1. Introduction of new technology to the rural communities.
2. Knowledge transfer to trainers including technicians for pertaining training to users, maintenance of system.
3. Demonstration of a successful project at household level creates replication potential in other states and countries.

In view of the above, the project proponent considers that, the project activity profoundly contributes towards sustainable development of the region as well as of the nation.

## 2 SAFEGUARDS

### 2.1 No Net Harm

According to the Ministry of Environment and Forests (MoEF), Government of India, under the Environment Impact Assessment Notification vide S .O.1533(E), dated 14-September-2006; the project activity of utilization of Improved Cook stove for cooking in rural households does not require environmental impact assessment study to be carried out.

### 2.2 Local Stakeholder Consultation

The project proponent has opted to develop CDM project for distribution of cook stoves in and across the different location in the state across different time frame. Based on the number of cook stoves aimed to be distributed under the planned program 30 phases are planned. Since the household to be covered in each phase are homogeneous owing to the household being identified by the Rural Development Department, Government of Maharashtra based on the level of poverty judged on the basis of the thirteen point criteria figured out by the Ministry and the total budgetary provision across the year. Because of the limited budgetary provision across a financial year a fixed number of populations can only be covered amongst the group leaving the others to be covered in subsequent time frame. Because of the similar category of population, the project proponent decided to carry out the stake holder's consultation for all the planned phases in a single go, so that the people from different geographical locations could able to respond to such meeting. The location for the consultation program is so selected that the particular location of the consultation represents the particular division or region of Maharashtra under whose jurisdiction several districts come into. As such the locations for the consultation program are selected and newspaper advertisements are published both in English and regional daily about the program so that the peoples from the particular region can attend the consultation program which they feel nearby. Local stakeholders' meetings were conducted to take public comments. Six stakeholder meetings were conducted at Nasik, Pune, Nagpur, Latur, Sangli and Washim districts of Maharashtra. The details of meetings are –

Date of Meeting	District	Meeting Venue
2nd February 2012	Nasik	Siaram Indrayani Housing Society, Takli Rd, Nasik- 06
2nd February 2012	Pune	G K Energy Marketers Pvt Ltd. Lokmanya Nagar, LBS Rd, Pune
2nd February 2012	Nagpur	246 KumbharPura, Jagnath Rd Gandhi Bag, Nagpur
2nd February 2012	Latur	Sut Mil Rd, Pushkar Residency, Latur
3rd February 2012	Sangli	Khan Bag, Jai Bhavani Chowk, Sangli
3rd February 2012	Washim	Dr. Jirvankar Bhar Jahangir Resod, Washim

Along with public notices published in newspapers namely The Free Press Journal, Mumbai and Navshakti, Mumbai on 26th January 2012, notification of the meetings was sent through invitations, letters and personally to various categories of stakeholders to attend the stakeholder meeting. The meeting was conducted in regional language –Marathi and English. The discussion points of the meeting included purpose of the consultation, background and

role of bundling agency and manufacturer under this project, description of the project, demonstration of improved cook stove, about climate change and CDM, impact of climate change, global environment scenario, contribution of the project towards sustainable development of the country by the representative from bundling agency and Improved Cook stove manufacturer. After a detailed elaborative discussion on the project, the stakeholders were asked to provide their comments /feedbacks /suggestions on the project. The cook stoves in this project activity (Fifth phase) are distributed in Gadchiroli, Chandrapur and Nagpur districts of Maharashtra which lies in Nagpur division jurisdiction and therefore, it can be concluded that, the stakeholders consultation conducted on 2nd February 2012 at Nagpur district of Nagpur Division covered this project activity and the consultation was also conducted before the webhosting of the PDD. The meeting was attended by members from various backgrounds as listed below –

Sl. No.	Name of Person	Designation
1	Gopal R Kabra	CEO, GKEMPL
2	Raju Babasaheb Kadam	Farmer
3	Sopan Sham Kale	Student
4	Jitesh Gawale	Executive
5	Kartik Kumar	Student
6	Imran Munjaver	Business
7	Makrand Mane	Employee
8	Rahul Awtade	Promoter
9	Raju Namdev Pagar	Workshop
10	Sanjay Shinde	Business

The overall response from the local stakeholders on the project was encouraging and positive. No adverse or negative comments or response received in the meeting. The participants of the meeting had not raised any significant concerns nor seek any clarification related to potential impacts of the project activity or any other issue. The project as a whole gives positive impression towards the issue of sustainable development of the country.

The stakeholder's comments sought during the meeting in following manners –

- The stakeholders were invited to ask any clarification or information on the project activity during the meeting.
- Evaluation form / questionnaire were asked to fill in by the stakeholders interested to give their inputs on the project activity.

The evaluation forms were analyzed for the comments and no negative comments is being found.

The summary of stakeholders comment received during stakeholders meeting of Pune are summarized as below –

Queries	Reply
Enquired about time required for the CDM project development.	Responding to the query, representative of GKEMPL replied that, time line for CDM project development and registration is around one year but, the revenue inflow will take at least another one year.
What are benefits that, users of Improved Cook stove will	The representative of GKEMPL explained that, use of improved cook stoves for household cooking will reduce indoor air pollution, cooking time and also fuel-wood consumption due to higher efficiency. Moreover, the users of improved cook stoves will get free

receive from the project activity?	maintenance service and free of cost replacement of the system at the end of its lifetime with new ICS.
Whether they have to do application to any office to consider their system under the project activity?	In reply to the query, the representative of GKEMPL responded that, the users need not require to apply for being considered under the project. The representative of the GKEMPL will contact each of the beneficiary for necessary due diligence.
How much CER will be generated from each Improved Cook stove system?	Addressing to the query, the representative of GKEMPL replied that, approximately 1.10 CER will be generated in every year by use of each Improved Cook stove.
Enquired about time required for the CDM project development.	Responding to the query, representative of GKEMPL replied that, time line for CDM project development and registration is around one year but, the revenue inflow will take at least another one year.

### 2.3 AFOLU-Specific Safeguards

Not applicable to this as this is not an AFOLU project activity.

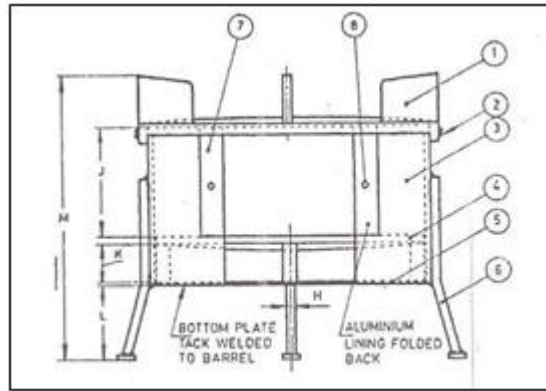
## 3 IMPLEMENTATION STATUS

### 3.1 Implementation Status of the Project Activity

The improved cook stove conceived under the project activity is MNRE and BIS (Bureau of Indian Standard) approved state of art and environmentally sound technology. The improved cook stove is manufactured in accordance to IS13152 (Part 1): 1991 (Solid Biomass – Chulha Part 1(Metallic))<sup>13</sup>. The standard has been prepared in line with the national approach towards fuel conservation, better environment, mitigating health hazards and loss of forest cover caused by burning of wood as cooking fuel and therefore, can be conceived as an environmentally sound technology for combustion of solid biomass for the purpose of cooking. Moreover, the materials used in manufacturing of the cook stove are of iron and steel which is recyclable after end use and hence, considered to be environmentally safe after lifetime also. Although the ICS distributed under the current phase pertains to different batch of manufacturing, but since the products are being manufactured complying to a particular performance standard (IS13152 (Part 1):1991) the quality output for each unit of products complies to a minimum level.

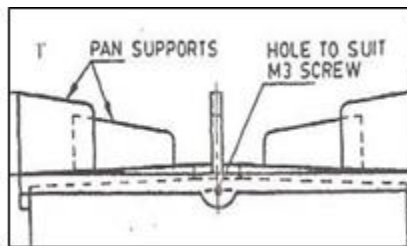
The cook stove distributed under the project activity is a portable, single-pot stove without chimney, natural draft and metal made stove specifically suitable for combustion of solid biomass. The cook stove broadly comprises of a combustion chamber, top plate for holding the utensils, grate for holding fuel during combustion and bottom plate that facilitates ventilation of air. The combustion chamber is cylindrical shaped and made up of mild steel. One side of the chamber of improved cook stove is opened for feeding of fuel. The chamber top plate is die cast and made up of cast iron.

<sup>13</sup> The Standard has been prepared by Indian Standard body in line with the national approach towards fuel conservation and better environment, mitigating Health hazards and drudgery and loss of forest cover caused by burning of wood as cooking fuel (Forward: Indian Standard Solid Bio-Mass, Chulha – Specification Part 1 Portable (Metallic))

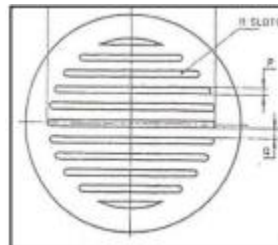


**Diagram of Improved Cook Stove**

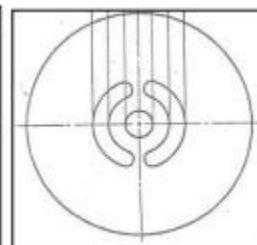
1. Top plate,
2. Screw,
3. Barrel,
4. Grate,
5. Bottom Plate,
6. Legs,
7. Aluminium Lining and
8. Rivet



Top Plate



Grate



Bottom Plate



Material used for manufacturing of each component of the cook stoves are:

Component	Material
Top plate	Cast iron
Grate	Cast iron
Barrel	Mild steel
Bottom Plate	Mild steel
Lining	Aluminum
Perforated Sleeve	Mild steel
Handle	Mild steel
Pan Support	Mild steel sheet-flat-rod
Legs	Mild steel sheet and rod

### Life time

The operational lifetime of the cook stove is 5 years 00 months. As per manufacturer authorization the operational life of improved cookstoves is over seven years, however beyond five years the operational efficiency drops below the rated efficiency and hence was considered as operational life time in the registered PDD.

Decline in the cook stove efficiency as assessed through periodic efficiency testing is being reported and considered as part of emission reduction calculation.

### Replacement of Improved Cookstoves

Replacement of ICS was scheduled to be carried out

(a) in case of breakage/ dismantle of ICS during the operational period – on receipt of complaint the localised service providers of the project proponent visits the beneficiary with backup cook stoves (ICS) and provides the beneficiary with backup stoves if the service provider fails to address the issues locally. The malfunctioned ICS post collected from beneficiary is thereafter sent to the company workshop in case of possibility of repair. In case the ICS couldn't be repaired beneficiary are to be provided with new ICS.

(b) Observed requirement of complex repair- In case the maintenance team of the project proponent during scheduled O&M observes requirement of complex repairs the team may on discretion replace the existing cookstoves with a new one or a backup one. In such case the beneficiary is provided with backup new ICS the same are to be replaced with the repaired one operating at the desired satisfaction level of beneficiary.

(c) Post assessment of operational efficiency in the last year after the elapse of scheduled lifetime of ICS from the date of distribution.

During the current monitoring period of 5 years there has been no instances of replacement of improved cook stoves, therefore no such impact on emission reduction calculation due to increase of cook stoves efficiency.

### Operation and maintenance

Operation and maintenance of Improved cook stoves are carried out periodically by authorised representative of project proponent (manufacturer of improved cook stoves). The authorized representative of the project proponent during the annual (periodic) maintenance, also motivates and persuades the beneficiaries for continuation of ICS usages for cooking of all meals towards reducing the health impact of the family especially the women and children in case of usage of traditional cook stoves and thereby ensuring the restoration of operation of ICS.

Approach for assessing share of Improved cookstoves users for estimation of emission reduction

1. The number of beneficiaries using Improved cook stoves during a particular monitoring period are assessed based on record of operation and maintenance, maintained by project proponent pertaining to discontinued users.
2. Annual third-party sample survey is being carried out to assess the share of beneficiaries using improved cookstoves. During survey in case beneficiaries were evaluated to be using improved cook stoves for a limited period along with usage of traditional cookstoves the beneficiaries are considered as partial users. Partial users are beneficiaries /household, those who have not discontinued using of ICS but have been using ICS for a limited period and also using traditional cookstoves for the purpose of cooking along with ICS. Since the number of days of operation of partial ICS usage during a particular crediting period is hard to ascertain (uncertainty of estimation), therefore as a conservative approach the beneficiaries /household using ICS partially are considered as discontinued users.

The survey observed/found most of the beneficiaries to have fully discontinued the usage of traditional cookstoves and have even dismantled the traditional cookstoves.

Around 5-10% of beneficiaries during a particular crediting period have been assessed to have partially used traditional cookstoves (as deduced from the beneficiary survey) due to customary practice/festival or to manage guests. Considering the perceptive response of the beneficiaries regarding the number of day of functioning of traditional cookstoves, it is conservatively considered that the number of days of use of improved cookstoves for those particular beneficiaries who have used traditional cookstoves as zero/nil. Although such consideration negatively impacts the annualized emission reductions estimate but such consideration is being conservatively considered for the purpose of calculation.

## 3.2 Deviations

### 3.2.1 Methodology Deviations

Not Applicable

### 3.2.2 Project Description Deviations

Not Applicable

## 3.3 Grouped Projects

Not Applicable

# 4 DATA AND PARAMETERS

## 4.1 Data and Parameters Available at Validation

Data / Parameter	<b>B<sub>old</sub></b>
Data unit	tonnes/ household/year

Description	Quantity of woody biomass used in absence of the project activity
Source of data	Teri Energy Data Directory Yearbook for 2010
Value applied	1.469
Justification of choice of data or description of measurement methods and procedures applied	<p>The study as per Wood Fuel Trade in India – Food and Agricultural Organisation of the United Nation, July 2001, per capita per day biomass consumption of 1.52 kg and 5.6 kg of fuel wood consumption per household per day. Annual consumption per household per day is therefore estimated at 2.044 tonnes.</p> <p><b>Further, the publication of TERI Energy Data Directory and Yearbook2010</b> outlines that, the per capita per month consumption of fire wood in Maharashtra at 25.51 kg/month/capita. With average population size of 4.8 persons/household/the annual consumption of firewood is estimated at 1.469 tonnes/year/household.</p> <p>Being the annual household fuel consumption data estimated on the basis of the TERI Energy Data Directory is most conservative amongst the available fuel wood consumption figure available secondarily the value of 1.469 tonnes/household/year is considered for estimation of By, savings.</p>
Purpose of Data	Quantity of biomass utilization is used to estimate the quantum of biomass that will be saved in the project scenario after factoring into the improvement of efficiency.
Comments	The maximum value of Bold is fixed at ex-ante. Factors calculated based on the number of days of traditional cook stove usage and number of days of improved cook stoves usage is multiplied with Bold to estimate the Bold to be used for emission reduction calculation.

Data / Parameter	$\eta_{\text{new}}$
Data unit	%
Description	Efficiency of the cook stove being deployed as a part of the project activity
Source of data	Test report issued by Biomass Cook stove Testing Centre, Dept. of Renewable Energy Sources, Udaipur
Value applied	29.88%
Justification of choice of data or description of	Thermal efficiency test carried out as per water Boiling Test Protocol specified as per IS13152 protocol.

measurement methods and procedures applied	
Purpose of Data	Efficiency of the improved cookstoves is used to estimate the saving in fuel wood. ( The factor is not fixed ex-post and estimated based on monitored efficiency of sample number of cookstoves)
Comments	The value of Efficiency is monitored on an annual basis and vintage wise.

Data / Parameter	<b><math>B_{y,savings}</math></b>
Data unit	tonne/household/year
Description	Quantity of woody biomass saved due to implementation of the project activity
Source of data	Calculated
Value applied	0.9774
Justification of choice of data or description of measurement methods and procedures applied	$B_{y,savings}$ is calculated using equation $B_{y,savings} = B_{old} * (1 - \eta_{old} / \eta_{new})$ $= 1.469 * (1 - 0.1 / 0.2988)$ $= 0.9774$ tonne /household/year
Purpose of Data	Fuel wood saving is calculated for estimation of emission reduction.
Comments	The efficiency of the improved cook stoves is monitored on an annual basis based on the sample survey and if appliances are found to be operational with lower efficiency then, the actual efficiency determined during monitoring is considered to calculate emission reduction.

Data / Parameter	<b>Energy Saving per cook stove or household</b>
Data unit	GWh <sub>th</sub> /household/year
Description	Energy saving per cook stove due to improved efficiency of the distributed cook stove
Source of data	Calculated
Value applied	0.00407
Justification of choice of data or description of measurement methods and procedures applied	$Energy\ Saving = B_{y,saving} * NCV_{biomass}$ $= B_{old} * (1 - \eta_{old} / \eta_{new}) * NCV_{biomass}$ $= 1.469 * (1 - 0.1 / 0.2988) * 0.0150$ $= 0.01466$ TJ /household /year

	= 0.00407 GWhth/household/year = 4.073 MWhth/ household/year = 1.358 MWhe / household/year Note: Value of $NCV_{biomass}$ is considered as per Paragraph 5 of the applicable methodology AMS -II. G. Version 03; IPCC default value for fuel wood i.e. 0.015 TJ/tonne is chosen.
Purpose of Data	The data is used to assess the applicability condition of the project under micro small scale guidelines and also de-bundling.
Comments	-

Data / Parameter	$F_{NRB,y}$
Data unit	-
Description	The factors relates to the fraction of non-renewable biomass
Source of data	Calculated using secondary sources
Value applied	87.9%
Justification of choice of data or description of measurement methods and procedures applied	The fraction of non-renewable biomass is calculated based on the fuel wood demand and supply of biomass across the state of Maharashtra.
Purpose of Data	Data is used for estimation of emission reduction.
Comments	-

## 4.2 Data and Parameters Monitored

Data / Parameter	$\eta_{new}$
Data unit	%
Description	Efficiency of the system being deployed in project activity
Source of data	Third party efficiency test report.
Description of measurement methods and procedures to be applied	The sample systems tested as per Water Boiling Test Protocol indicated in IS 13152 (Part 1): 1991 for solid biomass cook stove. The testing is carried out on annual basis of representative sample. The minimum value of tested efficiency or 29.88% which so ever is lower is used to calculate emission reduction of the systems for particular year of operation.
Frequency of monitoring/recording	Efficiency of the improved cookstoves under operation is monitored across sample system on an annual basis

Value monitored	Period	Date of Monitoring	Number of Improved cookstoves assessed	Minimum efficiency of the lot								
	01-October-2012 to 30-September-2013	26/12/2013-27/12/2013 24/12/2013-25/12/2013 16/12/2013-17/12/2013	40	28.02%								
	01-October-2013 to 30-September-2014	5/12/2014-6/12/2014 8/12/2014-9/12/2014 12/12/2014-13/12/2014	40	27.08%								
	01-October-2014 to 30-September-2015	1/12/2015-2/12/2015 3/12/2015-4/12/2015 6/12/2015-7/12/2015	40	27.01%								
	01-October-2015 to 30-September-2016	01/12/2016-2/12/2016 04/12/2016-05/12/2016 07/12/2016-08/12/2016	40	26.90%								
	01-October-2016 to 30-September-2017	25/11/2017-26/11/2017 28/11/2017-29/11/2017 1/12/2017-2/12/2017	40	26.00%								
Monitoring equipment	1. Digital Thermometer 2. Weighing scale											
QA/QC procedures to be applied	Efficiency of the system is tested by third party agency on principle of the Water Boiling Test Protocol indicated in IS 13152 (Part 1): 1991. The number of sample system to be inspected is estimated in accordance to " <b>Guidelines for Sampling and Surveys for Project Activities and Programme of Activities</b> " Version 02, EB 69 Annex 5 and procedure for sample size calculation is specified in Section B.7.2 of the CDM PDD.											
Purpose of the data	The value of the efficiency is used to calculate the $B_{y, savings}$ used for ex-post estimation of emission reduction.											
Calculation method	<p> <b>Heat utilized</b> = <math>(n-1) \times (W \times 0.214 + w) \times (t_2 - t_1) + (W \times 0.214 + w) \times (t_3 - t_1)</math> kcal  <b>Heat Produced</b> = <math>[(X \times c_1) + (x \times d / 1000 \times c_2)]</math> kcal  <b>Thermal Efficiency</b> = Heat utilised / Heat Produced <math>\times 100</math> </p> <p><b>Where</b></p> <table border="1" data-bbox="634 1713 1412 1887"> <tr> <td>w</td> <td>Mass of water in vessel, in kg</td> </tr> <tr> <td>W</td> <td>Mass of the vessel complete with lead and stirrer, in kg</td> </tr> <tr> <td>X</td> <td>Mass of the fuel consumed, in kg</td> </tr> <tr> <td>c<sub>1</sub></td> <td>Calorific value of wood in kcal/kg</td> </tr> </table>				w	Mass of water in vessel, in kg	W	Mass of the vessel complete with lead and stirrer, in kg	X	Mass of the fuel consumed, in kg	c <sub>1</sub>	Calorific value of wood in kcal/kg
w	Mass of water in vessel, in kg											
W	Mass of the vessel complete with lead and stirrer, in kg											
X	Mass of the fuel consumed, in kg											
c <sub>1</sub>	Calorific value of wood in kcal/kg											

x	Volume of the kerosene consumed, in ml
c <sub>2</sub>	Calorific value of kerosene in kcal/kg
d	Density of kerosene, in g/ml
t <sub>1</sub>	Initial temperature of the water, in °C
t <sub>2</sub>	Final temperature of the water, in °C
t <sub>3</sub>	Final temperature of the water in the last vessel at the completion of the test, in °C
n	Total number of vessels used
0.214	Specific heat of aluminium in kcal/kg°C

**Comments**

As a part of the third party sample assessment of the operational efficiency of improved cookstoves, the minimum of the assessed efficiency from amongst the forty system tested below 29.88% is considered as a efficiency to be considered for purpose of emission reduction calculation in place of 29.88% (rated efficiency).

Although the ICS distributed under the current phase pertains to different batch of manufacturing, but since the products are being manufactured complying to a particular performance standard (IS13152 (Part 1):1991) the quality output for each unit of products complies to a minimum level. Moreover, the distribution is carried out during same period amongst homogeneous beneficiary segment, moreover the onset of operations of ICS has been kept at the same point of time. Therefore, as per the guidelines specified under the registered PDD Simple Random sampling methods were selected.

The data estimated is archived both in paper and electronic spread sheet whereby the paper and the electronic form of the documents is maintained by the Project Participant for period of two year and electronic data is maintained till 2 years after the last issuance.

<b>Data / Parameter</b>	<b>No. cook stoves in use</b>
<b>Data unit</b>	Number
<b>Description</b>	The number of improved cook stoves distributed to households under the project activity and under operation.
<b>Source of data</b>	Third party agency survey report and database managed by the Project Participant (the end user agreement)
<b>Description of measurement methods and procedures to be applied</b>	The monitoring consists of third-party survey of representative sample on annual basis to evaluate the number of systems in operation. The percentage of cook stove in usage as estimated from the survey result is multiplied with the total number of cook

	stove to determine number of cook stove in operation and to be considered for the purpose of emission reduction calculation.																																				
Frequency of monitoring/recording	Number of improved cookstoves under operation is monitored annually based on sample survey																																				
Value monitored	<p>During survey in case beneficiaries were evaluated to be using improved cook stoves for a limited period along with usage of traditional cookstoves the beneficiaries are considered as partial users. Partial users are beneficiaries /household, those who have not discontinued using of ICS but have been using ICS for a limited period and also using traditional cookstoves for the purpose of cooking along with ICS. Since the number of days of operation of partial ICS usage during a particular crediting period is hard to ascertain (uncertainty of estimation), therefore as a conservative approach the beneficiaries /household using ICS partially are considered as discontinued users for the purpose of estimating emission reduction.</p> <table border="1"> <thead> <tr> <th>Period</th> <th>No. of Dis-continued user</th> <th>Date of Survey</th> <th>Number of beneficiaries surveyed</th> <th>% of partial users</th> <th>% of users used ICS only</th> </tr> </thead> <tbody> <tr> <td>01-October-2012 to 30-September-2013</td> <td>0</td> <td>26/12/2013-27/12/2013 24/12/2013-25/12/2013 16/12/2013-17/12/2013</td> <td>160</td> <td>7.50%</td> <td>92.50%</td> </tr> <tr> <td>01-October-2013 to 30-September-2014</td> <td>0</td> <td>5/12/2014-6/12/2014 8/12/2014-9/12/2014 12/12/2014-13/12/2014</td> <td>160</td> <td>8.75%</td> <td>91.25%</td> </tr> <tr> <td>01-October-2014 to 30-September-2015</td> <td>0</td> <td>1/12/2015-2/12/2015 3/12/2015-4/12/2015 6/12/2015-7/12/2015</td> <td>160</td> <td>9.37%</td> <td>90.63%</td> </tr> <tr> <td>01-October-2015 to 30-September-2016</td> <td>0</td> <td>01/12/2016-2/12/2016 04/12/2016-05/12/2016 07/12/2016-08/12/2016</td> <td>160</td> <td>9.37%</td> <td>90.63%</td> </tr> <tr> <td>01-October-2016 to 30-September-2017</td> <td>0</td> <td>25/11/2017-26/11/2017 28/11/2017-29/11/2017 1/12/2017-2/12/2017</td> <td>160</td> <td>11.25%</td> <td>88.75%</td> </tr> </tbody> </table>	Period	No. of Dis-continued user	Date of Survey	Number of beneficiaries surveyed	% of partial users	% of users used ICS only	01-October-2012 to 30-September-2013	0	26/12/2013-27/12/2013 24/12/2013-25/12/2013 16/12/2013-17/12/2013	160	7.50%	92.50%	01-October-2013 to 30-September-2014	0	5/12/2014-6/12/2014 8/12/2014-9/12/2014 12/12/2014-13/12/2014	160	8.75%	91.25%	01-October-2014 to 30-September-2015	0	1/12/2015-2/12/2015 3/12/2015-4/12/2015 6/12/2015-7/12/2015	160	9.37%	90.63%	01-October-2015 to 30-September-2016	0	01/12/2016-2/12/2016 04/12/2016-05/12/2016 07/12/2016-08/12/2016	160	9.37%	90.63%	01-October-2016 to 30-September-2017	0	25/11/2017-26/11/2017 28/11/2017-29/11/2017 1/12/2017-2/12/2017	160	11.25%	88.75%
Period	No. of Dis-continued user	Date of Survey	Number of beneficiaries surveyed	% of partial users	% of users used ICS only																																
01-October-2012 to 30-September-2013	0	26/12/2013-27/12/2013 24/12/2013-25/12/2013 16/12/2013-17/12/2013	160	7.50%	92.50%																																
01-October-2013 to 30-September-2014	0	5/12/2014-6/12/2014 8/12/2014-9/12/2014 12/12/2014-13/12/2014	160	8.75%	91.25%																																
01-October-2014 to 30-September-2015	0	1/12/2015-2/12/2015 3/12/2015-4/12/2015 6/12/2015-7/12/2015	160	9.37%	90.63%																																
01-October-2015 to 30-September-2016	0	01/12/2016-2/12/2016 04/12/2016-05/12/2016 07/12/2016-08/12/2016	160	9.37%	90.63%																																
01-October-2016 to 30-September-2017	0	25/11/2017-26/11/2017 28/11/2017-29/11/2017 1/12/2017-2/12/2017	160	11.25%	88.75%																																
	Number of Improved Cook stoves distributed – 14,530																																				
Monitoring equipment	-																																				
QA/QC procedures to be applied	The project proponent obtains an authorization from each /group of the household in form of end user agreement for processing of carbon revenue. The database containing all information of the end user agreement is maintained in a central server located with project participant and accessible to the project team at different locations.																																				

	During the time of verification, the VVB can verify the list of beneficiaries who has signed the end user agreement (for which the emission reductions are claimed).
Purpose of the data	For estimation of baseline emission
Calculation method	$\text{Share of beneficiaries using Improved cookstoves} = \frac{160 - \text{no of partial users}}{160}$
Comments	<p>The percentage of the representative sample using the improved cook stove determined from the sample survey is used to calculate the total number of cook stoves in operation. The survey report is kept and maintained by the project proponent for the period of two years after the last issuance.</p> <p>Since, the distribution of Improved cook stoves is carried out during same period amongst homogeneous beneficiary segment, and moreover the onset of operations of ICS has been kept at the same point of time. Therefore, as per the guidelines specified under the registered PDD Simple Random sampling methods were selected.</p>

Data / Parameter	<b>Days of Operation</b>
Data unit	Number
Description	The parameter relates to the number of days for which the cook stove in operation during the particular year
Source of data	Monitoring Database
Description of measurement methods and procedures to be applied	<p>The emission reduction as against the cook stove is calculated when the system is being delivered to the end user, the end user initiated its operation and the end user agreement is being signed. Since, the emission reduction is based on the days of operation therefore, it is important to monitor the number of days of non-functioning.</p> <p>The days of non-functioning is estimated based on the number of days between the date of complaint as against damage or non- functioning received and date of repair or replacement. The information is maintained in form of database and archived.</p> $\text{Number of days of operation} = 365 - \text{Average number of days the cook stove was non-functional}$ <p>The number of non-functional days is based on the number of days the cook stoves were under repair/replacement</p>
Frequency of monitoring/recording	Days of operation of improved cookstoves under operation is monitored annually based on sample survey

Value monitored	Period	Total number of beneficiaries	Number of beneficiaries for which defunct date was a day/more	Average days of operation
	01-October-2012 to 30-September-2013	14,530	0	365
	01-October-2013 to 30-September-2014	14,530	0	365
	01-October-2014 to 30-September-2015	14,530	0	365
	01-October-2015 to 30-September-2016	14,530	0	365
	01-October-2016 to 30-September-2017	14,530	0	365
Monitoring equipment	-			
QA/QC procedures to be applied	The database for the date of dissemination of cook stoves, date of receipt of complaint for repair/ replacement and the date of repair/replacement is recorded by the village coordinator. The related information is maintained by the village co-ordinator and passed on to the VCS team on a monthly basis. In case of the cook stove being replaced, a new end user agreement is signed with the end user and attached to the original agreement. Monitoring database and the end user agreement is maintained both in soft as well as hard copy.			
Purpose of the data	For estimation of baseline emission			
Calculation method	-			
Comments	<p>The number of days for which the improved cook stoves were non-functional is considered for estimation of emission reduction. The record of database and copy of end user agreement is kept and maintained by the project participant for the period of two years after the last issuance.</p> <p>For ex-post, the total number of days of non-operation of the improved cook stoves due to repair, maintenance is retrieved from the maintenance log books is averaged as against the total number of cook stoves in actual operation (as per survey) and is considered.</p> <p>Say, if n is the total no of non- operational days as per the maintenance records of all of the cook stoves, the average days of non-operation for each cook stove is estimated as <math>= n/x</math> where x is the number of cook stoves in actual operation as per the sample survey.</p>			

Data / Parameter	<b>Number of days of functioning of traditional cook stoves</b>
Data unit	Number
Description	The parameters refer to the number of days for which the traditional cook stove is being used by the household.

Source of data	Annual third-party agency survey of representative sample household
Description of measurement methods and procedures to be applied	Survey is carried out to estimate the number of days for which the household has operated the traditional cook stove during a particular monitoring period.
Frequency of monitoring/recording	Number of days of functioning of traditional cook stoves is monitored annually based on sample survey
Value monitored	<p>During survey in case beneficiaries were evaluated to be using improved cook stoves for a limited period along with usage of traditional cookstoves the beneficiaries are considered as partial users. Partial users are beneficiaries /household, those who have not discontinued using of ICS but have been using ICS for a limited period and also using traditional cookstoves for the purpose of cooking along with ICS. Since the number of days of operation of partial ICS usage during a particular crediting period is hard to ascertain (uncertainty of estimation), therefore as a conservative approach the beneficiaries /household using ICS partially are considered as discontinued users.</p> <p>Since the beneficiary using traditional cookstoves were opted out of emission reduction estimation therefore the beneficiaries considered resembles only to those who are using improved cookstoves. Therefore the days of usage of traditional cookstoves for beneficiaries considered is zero.</p>
Monitoring equipment	-
QA/QC procedures to be applied	The survey is carried out by third party agency and is co-ordinated by the project proponent.
Purpose of the data	For estimation of baseline emission
Calculation method	-
Comments	Number of days of operation of the traditional cook stove is obtained from the result of sample survey. The number of days of traditional cook stove as per the survey is used to obtain the average days of usage of the traditional cook stoves for all the households who still use the improved cook stoves of this project activity. This average day is used to arrive at a factor - $= (365 - \text{Average number of days of traditional cook stove usage in all households}) / 365$
Data / Parameter	<b>Number of Cook stove replaced</b>
Data unit	Number

<b>Description</b>	The parameters refer to the number of cook stove that are replaced (due to end-of-life time or damage) by the new cook stove with efficiency greater than or equal to 29.88%.			
<b>Source of data</b>	Monitoring database, new end user agreement and test certificate of the new system supplied.			
<b>Description of measurement methods and procedures to be applied</b>	Record is being updated in the databases as and when the improved cookstoves are replaced by a new one . On replacement a new end user agreement is signed with the existing end user and the information relating to the replacement along with necessary details is updated in the database.			
<b>Frequency of monitoring/recording</b>	Recorded as and when replaced			
<b>Value monitored</b>	Period	Number of improved cookstoves distributed and under operation	Number of cookstoves replaced post end of life time	Number of cookstoves replaced due to defunct
	01-October-2012 to 30-September-2013	14,530	0	0
	01-October-2013 to 30-September-2014	14,530	0	0
	01-October-2014 to 30-September-2015	14,530	0	0
	01-October-2015 to 30-September-2016	14,530	0	0
	01-October-2016 to 30-September-2017	14,530	0	0
<b>Monitoring equipment</b>	-			
<b>QA/QC procedures to be applied</b>	The copy of the new end user agreement for the replaced cook stove along with the efficiency certificate of the new system is archived along with the existing agreement. The database is updated as and when the system is replaced.			
<b>Purpose of the data</b>	Assessment of baseline emission			
<b>Calculation method</b>	-			
<b>Comments</b>	The record of database and copy of end user agreements (both new and old one) is maintained by the project participant for the period of two years after the last issuance.			

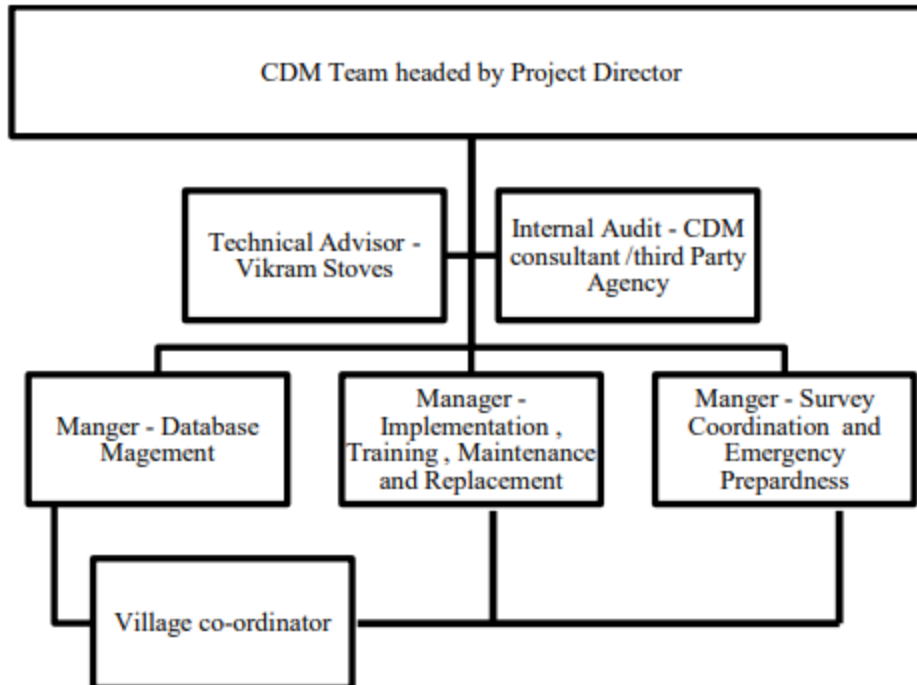
<b>Data / Parameter</b>	<b>B<sub>y</sub></b> , savings
<b>Data unit</b>	Tonnes/year/household
<b>Description</b>	Quantity of woody biomass that is saved through the project activity.

Source of data	calculated		
Description of measurement methods and procedures to be applied	<p>The quantity of woody biomass saved is calculated following the equation <math>B_{y, \text{ saving}} = B_{\text{old}} * (1 - \eta_{\text{old}}/\eta_{\text{new}})</math></p> <p>Where, <math>B_{\text{old}}</math> is calculated based on number of days cook stove is operational as calculated above and per capita biomass consumption of 25.51 kg/person/month multiplied by 4.8 members per rural household also factoring into the number of days for which the traditional cook stoves were in operation and the number of days of non-functioning of the improved cook stoves.</p> <p>The efficiency of the project system is tested on a representative sample basis.</p>		
Frequency of monitoring/recording	Calculated on an annual basis		
Value monitored	Period	Operational Efficiency considered	Estimated By savings/ ICS
	01-October-2012 to 30-September-2013	28.02%	0.9448
	01-October-2013 to 30-September-2014	27.08%	0.9265
	01-October-2014 to 30-September-2015	27.01%	0.9252
	01-October-2015 to 30-September-2016	26.90%	0.9230
	01-October-2016 to 30-September-2017	26.00%	0.9041
Monitoring equipment	-		
QA/QC procedures to be applied	The minimum tested efficiency of the representative samples or 29.88% is used for $\eta_{\text{new}}$ .		
Purpose of the data	-		
Calculation method	-		
Comments	The data estimated and the survey related documents is archived by the project participant for the period of 2 years after the last issuance.		

### 4.3 Monitoring Plan

The monitoring of the Project activity is executed by the team of the Project Participant, Village level coordinator appointed by the Project Participant, Technical Advisor from Vikram Stoves and consultant whose specific role and responsibilities are explained as follows. The following section also explicitly indicates the monitoring plan, implementation and record archiving procedure, management of monitoring, facilitating survey, training, maintenance plan and emergency preparedness.

The detailed team structure for executing the monitoring is as follows:



### Roles and Responsibilities

The roles and responsibilities of the team include:

- Undertaking awareness amongst the beneficiaries relating to usefulness of the cook stoves.
- Providing training to each entity on the operating methods and regular maintenance practice of improved cook stoves.
- Undertaking maintenance of the cook stoves on a periodic basis.
- Replacing supplied improved cook stoves with new one at the end of technical life time of the distributed system within the crediting period.
- Development and monitoring of project.
- Undertaking spot check, annual survey to access the usage, functional efficiency, maintain database and facilitate monitoring as described in section B.7.as well as the following section of the PDD.

The end users or beneficiaries is responsible for -

- Continual usage of cook stoves
- Undertaking regular maintenance
- Supporting the village coordinator and the project participant in undertaking monitoring
- Inform the village coordinator in case the cook stove malfunctions.
- Dismantle or refrain from use of traditional cook stove
- In case the family decides to shift to the same is intimated to the village coordinator.

The purpose of monitoring is to achieve actual and credible emission reduction estimation pertaining to the project activity. The project participant therefore, needs to monitor and archive data required for estimation of emission reduction.

According to the approved methodology AMS -II. G.; the monitoring comprises of –

1. Efficiency check of the representative sample on annual basis to ensure that, the cook stoves are still operating at the specified efficiency ( $\eta_{new}$ ). If appliances are found to be operational with efficiency lower than 29.88%, the efficiency determined during monitoring is used to calculate emission reduction. (In accordance to Paragraph 15 of the approved methodology)
  - Thermal efficiency test is carried out in accordance to the Water Boiling Test Protocol as specified in IS 13152 (Part 1): 1991 standard.
  - The sample size is selected in accordance to "Guidelines for Sampling and Surveys for Project Activities and Programme of Activities" Version 2, EB 69.
2. Monitoring also consists of checking of representative sample on annual basis to determine if the improved cook stoves are still operating or are replaced by an equivalent in service appliance. In case of replacement, it is ensured that, efficiency of new equipment is similar to the equipment being replaced.  
 If the cook stove is replaced with higher efficiency appliances, then, the efficiency of 29.88% is considered as conservative approach. (In accordance to Paragraph 16 of the methodology)
3. Monitoring ensures that:
  - a. Either the replaced low efficiency appliances are disposed of and not used within the boundary or within the region; or
  - b. If baseline stoves continue to be used, monitoring ensures that the fuel-wood consumption of those stoves is excluded from Bold.

Therefore, the project proponent has developed a plan for monitoring under the following heads –

#### **Implementation Arrangements and Record archiving-**

All the household post to the distribution of the cook stoves is oriented to its usage and regular maintenance. With registration of the project under the UNFCCC; the project participant imparts an awareness session over cookstove usage.

#### **As a part of the implementation program the project participant ensures:**

1. Signing of the end user agreement with the beneficiaries (the project participant completes signing of end user agreement with all the beneficiaries who are being provided with the cook stoves before registration of the project). As a part of the contractual agreement with each of the beneficiaries for the titled project a unique identification number is issued as against to each project cook stoves. Moreover, as a part of the agreement each of the end user ascertains that they won't be entering into agreement with other agencies to obtain revenue. The above two steps nullify the chances of double counting.
2. The coordinators are employed under the project activity and is responsible for monitoring, archiving of the records and undertaking maintenance.
3. Creating database to archive relevant information about the end user, cook stoves and related information of the end user agreement. The database is created based on the end user agreement and is managed by the team. The database contains all the relevant information about the beneficiary in regard to the end user agreement. Each of the beneficiaries in the database is identified by the unique identification number. The database manager ensures that there has been no double counting/ repetition of the beneficiary information, location and unique identification number of the cook stoves. The database is updated on a regular basis to include:
  - a. Replacement of the cook stoves after schedule life time

- b. Scheduled maintenance
- c. Unscheduled maintenance or fault rectification measures undertaken
- d. Temporary or permanent drop out

### **Finalizing the number of cook stoves for emission reduction estimation**

As described in the section above in regard to the implementation arrangement and record archiving the dissemination of the cook stove to the household and its usage thereafter includes the following steps:

1. Signing of end user agreement
2. Dissemination of improved cookstoves

In accordance to the guidance of the methodology, emission reduction as against each cook stoves can only be estimated from the point of cook stove usage. Therefore, the date of dissemination of cook stoves and signing of the end user agreement with each beneficiary after dissemination is considered as the date from where the emission reduction calculation is initiated for each cook stove for the first monitoring period. For the purpose of estimation, the end date of cookstoves dissemination is considered as start date of the monitoring period.

### **Management of monitoring activities**

The monitoring of the project activity is reviewed and coordinated by the top management of the Project Participant (GKEMPL) through Monitoring Coordinator, team of Project Participant (GKEMPL) headed by Project Director and technical team from Vikram Stoves.

The persons and staffs involved in monitoring is trained over the procedure in accordance to the manual and works out under the supervision of the Project Director. The major task to be undertaken and the responsibility are as follows:

1. Co-ordinator: Each coordinator acts as coordinating point between the project household and the Team (respective manger). The village coordinator is responsible to facilitate and oversee continual operation of cook stoves, maintain database related to number of cook stoves distributed and replaced thereafter, filing complain relating to non-functioning and undertaking on-call maintenance, recording of the complaint and maintenance time line and periodic submission of information to the team.
2. Team: Creating and maintaining database and end user agreement, up-gradation of beneficiary level information in the central database. The team monitors related information pertaining to the replacement of the cook stoves<sup>14</sup>. In case household considered under the project activity fails to meet the condition of the end user agreement or household drops out (because of the shift to location outside project boundary for employment purpose/migration for a temporary period or even the beneficiary decided to discontinue usage of improved cook stoves) then, such dropout household is conservatively deducted on temporary or permanent basis from the emission reduction calculation for the particular monitoring period. The VCS team is responsible for estimating the emission reduction.
3. Maintenance team – Vikram Stoves is responsible for imparting training relating to

---

<sup>14</sup> The replaced cook stoves is to dismantled and sold out to the cast iron and steel units respectively in order to recycle the system components. Such initiatives nullifies the chances of the replaced cook stove to be re-used.

the cook stove scheduled maintenance and undertaking periodic maintenance and on-call maintenance.

4. Daily usage- Household uses cook stove and intimate from time to time relating to non- functioning or temporary transfer/migration. The coordinator on basis of the usage report intimates the team.
5. Replacement of Existing improved cook stoves: In case the old cook stove is replaced by a new cook stove the same is to be done with similar or higher efficiency of existing cook stove (29.88%). On replacement a new end user agreement is signed with the existing end user the same information relating to the replacement along with necessary details is updated in the database. The copy of the new end user agreement for the replaced cook stove along with the efficiency certificate of the new system is archived along with the existing agreement. The database is updated as and when the system is replaced. The replaced cook stoves is dismantled and sold out to the cast iron and steel units respectively in order to recycle the system components. Such initiatives nullify the chances of the replaced cook stove to be re-used.

### Monitoring of Traditional cook stove usage

The traditional cook stove is considered as an auspicious with religious value and household consider it as a linkage to their tradition so, the household has kept the stove. However, each household has assured and confirmed through signing of end user agreement with the project participant to continue using of improved cook stoves at household.

However, as a conservative approach to monitor fuel wood consumption in the project household from use of existing mud cook stove, third party survey is carried out of representative sample household on annual basis to evaluate the number of days for which the traditional stoves has been operated across the year. The number of days for which the traditional stoves were in operation is used to derive the factor to be adjusted with  $B_{old}$ . The factor is calculated as follows:

$$= (365 - \text{Average No. of days of traditional cook stoves usage in all households}) / 365$$

The factor calculated using above approach is multiplied with  $B_{old}$  to calculate the value of  $B_{old}$  to be used for ex-post calculation of emission reduction.

### Sampling design

**Objective:** The objective of the sample design is to determine –

- a) **Efficiency of Improved cook stove in operation:** Efficiency of the system is tested by third party agency of a representative sample on principle of the Water Boiling Test Protocol indicated in IS 13152 (Part 1): 1991.
- b) **Usage Survey** – This is conducted on annual basis to determine the number of cook stove in operation. The survey is initiated after a year from date of project registration.
- c) **Usage of traditional cook stoves:** The survey is conducted to determine the number of days for which the household is using the traditional cook stoves.

**Reliability Requirement:** As per paragraph 22 of the approved methodology AMS - II.G; 90% confidence interval and 10% margin of error needs is considered conceiving the fact that survey is carried out on an annual basis.

**Target Population:** The number of cook stove conceived under the project activity is 14,530

**Survey Method:** Simple Random sampling is chosen, as the population under the project activity are homogeneous owing to the selection of beneficiary from similar socio-economic circumstances.

**Sample Size:**

The sample size is calculated using exact equation for random sampling –

$$n \geq 1.645^2 N * p * (1-p) / ((N-1) * 0.1^2 * p^2 + 1.645^2 * p*(1-p))$$

Where,

N	=	Sample size
N	=	14,530
P	=	expected proportion (on basis of assumption that, 90% of the cook stove is in operation and at the desired efficiency)
1.645	=	Represents 90% confidence required
0.1	=	Represent 10% relative precision

**a) Sample size for Efficiency test**

Although the cook stoves are designed to operate at a desired efficiency level throughout its life time subjected to periodic maintenance; efficiency test of the cook stoves is carried out on annual basis. The sample size for undertaking efficiency test is therefore, decided considering 90% of the cook stoves operates at a specified efficiency of 29.88%.

Following equation (3) above, the number of sample size arrived as below –

Time Period	Percentage of cook stove operational at specified efficiency at any point of time during the entire crediting period (This assumption is only for estimation of sample size) <sup>62</sup>	Sample size for survey (No. of systems)	Sample size after conceiving response rate of 80%
Annual	90%	31	40

(Note: the final sample size is rounded up and increased to the next closest integer)

The household for testing the efficiency as stated above is selected on a random sample basis. However while undertaking the sample beneficiary selection it is ensured that the household opted for efficiency testing are not common with the household /beneficiary selected for sample survey for improved cook stove usage and traditional cook stove usage during a particular year. Moreover, it is ensured that the household once selected for efficiency testing during a particular year is opted out from the selection procedure in course of the crediting period for further testing.

**Data to be collected -**

**Field Measurement** – Frequency: The efficiency testing of sample system is carried out on an annual basis. The inspection is carried out one year after the date of registration. There after once in every year the survey is conducted.

**QA/QC Procedure:** Each system is assigned with unique identification details. The systems to be sampled is randomly selected using software or random number tables and screen shots of the same is kept in the data base. The PP gets the services of third party agency or any scope accredited

DOE including the verifier for conducting the efficiency test of the samples presented by the PP before the preparation of the monitoring report.

**Analysis:** In case of the efficiency tested for the sample system is found to be lower than 29.88% then, the minimum value of efficiency tested is considered as a threshold for the subsequent years in place of 29.88% till the point further lower value of efficiency is tested.

**b) Sample size determination for no. of improved cook stoves in operation and no of days of traditional cook stove usage**

The sample size is estimated for determining the number of cook stoves in operation on basis of assumption that, 90% (This assumption is only for estimation of sample size) of cook stove is operational i.e. proportion of the cook stove in operation during a particular year is 0.9.

Therefore,  $n \geq 31$

For covering 100 percent of the sample and expecting a response rate of 80%. Thus, the sample size is estimated as  $31/80\% = 39$ . However, to cover the wide range of population and have a conservative sample the PP selects 4 times the number of sample estimated i.e., 156 numbers of household every year for the sample.

The household survey is designed to estimate the percentage of cook stove still in operation and number of days for which the traditional cook stoves are used for the purpose of estimation of emission reduction. The survey questionnaire essentially contain the unique identification details of the household, satisfactory level of usage and service, date of signing of the agreement, information regard to the maintenance or replacement if any, number of person in the household, other type of stoves used if any (type of fuel) and number of days of traditional cook stove usage (specific details about the festive season and any other occasion the traditional cook stove is used, if the size of the members are extremely high when it is not possible to use the improved cook stove).

It is to be noted that the household selected for the usage survey for determination of proportion of cook stove in operation is common where the survey for determining the number days for which the traditional cook stoves usage is carried out. The samples once surveyed in a year is not considered for subsequent year.

**Data to be collected**

**Field Measurement – Frequency:** The survey is carried out on an annual basis from the date of registration in specified format duly signed by the beneficiary to assess whether the beneficiary has been using the cook stoves distributed till date and to assess the number of days for which the beneficiary has used the traditional cook stoves during that year.

**QA/QC Procedure:** Each system is assigned with unique identification details. The systems to be sampled is randomly selected using software or random number tables and screen shots of the same is kept in the data base. The PP gets the services of third party agency or any scope accredited DoE including the verifier for taking the survey before the preparation of the monitoring report.

**Analysis:** Based on the response the percentage of improved cook stoves which are distributed as the part of this project activity that are still operated by the households and the average number of days of operation of the traditional cook stoves by each household would be estimated and the same is considered for ex-post emission reduction calculation.

The sample beneficiaries/household is same where the survey is carried out for estimation of operation of improved cook stoves and traditional cook stoves i.e. a single survey is designed to capture both. Moreover, it is ensured that the household once selected for survey during a

particular year is opted out from the selection in course of the subsequent crediting period for further testing.

Sl. No.	Description	Data to be collected	Method of survey	Sampling method	Proposed Sample size	Variance
1	Efficiency of Improved cook stove	Testing of the Efficiency of the improved cook stoves	Household Collection and conducting the test for the selected samples.	Simple Random sampling	40	90% Confidence level
2	Usage survey	No of system in operation	Household survey	Simple Random Sampling	160 household/ annum	90% confidence level
	Traditional cook stove usage	No of days for which the household use traditional cook stoves are used in the project household	Household survey	Simple Random Sampling	160 household/ annum	90% confidence level

### Reliability Check

The sample size as indicated in the table above is subjected to the final value of the precision calculated and in case the value of the precision estimated from the survey result is less than  $\pm 10\%$  then, the sample size is re-estimated and the additional number of beneficiary/households is interviewed to obtain the desired level of precision. The precision is calculated as follows:

Step1: Estimation of the value of proportion (p)

$P = \text{number of success} / \text{number of cook stoves that were observed in the sample}$

Step 2: Estimating Standard Error of the proportion

The standard error of the proportion is estimated using the following equation Standard error of proportion =  $\sqrt{(1-f) pq/n}$

Where,

f = sampling fraction = number of cook stoves that are observed in the sample/14,530, i.e., 160/14,530. p = proportion, 90%

q = (1-p)

n = number of cook stoves that are observed in the sample

Step 3: Estimating of Precision

Proportion =  $\pm z \text{ value} * \text{standard error of proportion}$

z value = for 90% confidence level the value of z is 1.645 Standard error of proportion = estimated in step 2

Step 4: Estimating of Relating Precision Relative Precision = Precision/proportion Where, Proportion is estimated in step 1 and precision in step 3

In case the value of the relative precision estimated based on the level of success relating to

1. Tested Efficiency of the improved cook stove being equal to greater than 29.88%
2. Number of the beneficiaries using improved cook stove

- Number of beneficiaries/households using traditional cook stoves is not within the specified limit of  $\pm 10\%$  the value of sample size is increased and survey is carried out amongst the additional population to obtain the desired level of precision i.e. within  $\pm 10\%$ .

### Training

The training is imparted to the following entities in following way-

Entity	Objective of training	Trained by	Onset	Frequency
Household	Operational procedure Scheduled maintenance Itemised recording and reporting	Vikram Stoves (for item no 1. and 2) team (for item 3)	After distribution	Once
Village Coordinator	Monitoring of the related parameter like Spot check of cook stove usage, situational review Database management and coordination with team System Maintenance	VCS team (for item no. 1 and 2) Vikram Stoves (for item 3)	On appointment	Once in a year
VCS team	Database management Undertaking Monitoring, Recording and archiving Preparation of monitoring report	Consultant and Top Management of the Project participant	On registration	Once in a year

### Quality Assurance and Quality Control of monitoring activities–

Top management of the Project participant (GKEMPL) is responsible for QA/QC which includes monitoring of accurate and transparent record keeping, monitoring and evaluation so that all supporting documentation and records for the project is easily accessible for spot checking and cross referencing by a third-party agency. Top management of the project participant ensures quality control of the monitoring activities in order to guarantee of records and to confirm absence of double-counting in any form. Project participant ensures that, the detailed beneficiary level database and the project database is up to date and the latter is representative of the most recent definitions of clusters. Internal audit is carried out on six month basis by the consultant or third party agency and includes -

- The internal review is carried out in every six month for compliance check in accordance to the manual.
- Non conformity if noted is reported and brought into the notice of the top management and measures is undertaken to ensure that required compliance is met.
- Training on the monitoring if felt by the auditor is imparted to the team.

### Emergency Preparedness

In case the village coordinator is reported against malfunction/ non-function of cook stove which the technical team is unable to rectify the fault and unable to co-ordinate with the technical team of Vikram Stoves; the coordinator immediately replace the existing cook stove with the new one. The faulty stoves thereafter be transported to the industry for repair.

- The coordinator is provided with stand-by stove components for repair and/or replacement.
- Few numbers of cook stoves are stocked with the Panchayat Samity/ Block Development Office to reduce the down time of replacement.
- In case the coordinator is unable to carry out maintenance, the same is reported to the technical team of Vikram Stoves and the nearby representatives visits the village to support the co- Ordinator in rectifying the fault.

# 5 QUANTIFICATION OF GHG EMISSION REDUCTIONS AND REMOVALS

## 5.1 Baseline Emissions

Baseline Emissions is estimated in following way –

$$ER_y = B_{y, savings} * f_{NRB,y} * NCV_{biomass} * EF_{projected fossil fuel}$$

Where, in accordance to paragraph 13 of the methodology, leakage related to the non-renewable woody biomass saved by the project activity is assessed based on ex post surveys of users and the areas from which this woody biomass is sourced. Subsequent to the clarification provided in sub paragraph (a) survey is not required for ex-post estimation of leakage in case  $B_{old}$  is multiplied by a net to gross adjustment factor of 0.95 to account for leakages.

Parameter	Data	Unit
$B_{old}$	1.469	Tonne fuel wood /cook stove/ year
$B_{y, savings}$	0.9774	Tonne fuel wood /cook stove/ year
$f_{NRB,y}$	87.90%	
$NCV_{biomass}$	0.015	TJ/tonne
$EF_{projected fossil fuel}$	81.60	tCO <sub>2</sub> e/TJ
$ER_{y,WGA,per cook stove}$ (Emission reduction/ cook stove /year without gross adjustment factor for $B_{old}$ to account for leakage)	1.0515	tCO <sub>2</sub> e /cook stove/ year

The leakage emission for ex-ante estimation of emission reduction is thereby calculated as a difference between the emission reduction estimated considering the actual value of  $B_{old}$  i.e. 1.469 Tonne fuel wood /cook stove/ year and emission reduction estimated by considering the value of  $B_{old}$  is estimated by multiplying  $B_{old}$  with a net to gross adjustment factor of 0.95.

For the purpose of ex-ante estimation of emission reduction, it is assumed that, only 90% of the cook stoves are operational in any point of time. Thus, the emission reduction per year ( $ER_{y, WGA}$ ) without gross adjustment factor for  $B_{old}$  to account for leakage considering 90% of the cook stove as operational for the entire crediting period is 13,750 tCO<sub>2</sub>e /year.

The Baseline Emissions achieved for this monitoring period is 65,223 tCO<sub>2</sub>e /year.

The year wise efficiency of the improved cookstoves tested and considered for estimation of baseline emission is outlined in the table below

Third party assessment for monitoring period - 01-October-2012 to 30-September-2013			
Identification number	Beneficiary name	District	Tested Efficiency
GKEMPLPH-V-13762	Gajanan Shivram Mohale	Nagpur	28.025%

GKEMPLPH-V-14333	Sagar Didlip Mahalle	Nagpur	28.030%
GKEMPLPH-V-9642	Laxmibai Ramcharan Khode	Chandrapur	28.043%
GKEMPLPH-V-571	Onkar Shivram Choudhary	Gadchiroli	28.049%
GKEMPLPH-V-14151	Baliram Fakira Gaikwad	Nagpur	28.097%
GKEMPLPH-V-5918	Khatunbi Imam Sheikh	Chandrapur	28.138%
GKEMPLPH-V-920	Laxminarayan Chainsukh Chandak	Gadchiroli	28.144%
GKEMPLPH-V-15	Shriram Moti Belsare	Gadchiroli	28.146%
GKEMPLPH-V-8630	Gardener Azim Ibrahim	Chandrapur	28.183%
GKEMPLPH-V-7177	Babu Damaji Kamble	Chandrapur	28.223%
GKEMPLPH-V-600	Manohar J.Jaiswal	Gadchiroli	28.241%
GKEMPLPH-V-966	Ramchandra Purnaji Gole	Gadchiroli	28.290%
GKEMPLPH-V-9351	Savita Santosh Avhale	Chandrapur	28.343%
GKEMPLPH-V-6223	Sirsat Shrava Harishchandra	Chandrapur	28.354%
GKEMPLPH-V-9653	Surekha Vinod Babare	Chandrapur	28.359%
GKEMPLPH-V-852	Keshavrao Krishnarao Deshmukh	Gadchiroli	28.371%
GKEMPLPH-V-8566	Sheikh Ulfatbi Saheblal	Chandrapur	28.411%
GKEMPLPH-V-4662	Ashok Radhakrishna Elam	Chandrapur	28.412%
GKEMPLPH-V-13300	Narayan Laxman Thakare	Nagpur	28.416%
GKEMPLPH-V-13167	Jagadish Datta Thakare	Nagpur	28.419%
GKEMPLPH-V-6938	Gaikwad Kisan Shamrao	Chandrapur	28.447%
GKEMPLPH-V-4444	Sheikh Ahmed Mahbub	Gadchiroli	28.501%
GKEMPLPH-V-5439	Gadge Sanjay Namdev	Chandrapur	28.521%
GKEMPLPH-V-2678	Arun Manik Kadam	Gadchiroli	28.527%
GKEMPLPH-V-11451	Pandurang Motiram Ingale	Nagpur	28.532%
GKEMPLPH-V-5889	Bande Vasant Gyanoba	Chandrapur	28.537%
GKEMPLPH-V-4120	Sarvade Rakesh Pandhari	Gadchiroli	28.538%
GKEMPLPH-V-9995	Mangibai Pita Lobha Rathod	Chandrapur	28.555%
GKEMPLPH-V-2810	Ramprasad Tukaram Nakhate	Gadchiroli	28.564%
GKEMPLPH-V-10820	Wazire Anant Limbaji	Nagpur	28.598%
GKEMPLPH-V-10775	Sangle Maroti Eknath	Nagpur	28.622%
GKEMPLPH-V-3543	Guralwar Bibhisha Sopan	Gadchiroli	28.644%
GKEMPLPH-V-10851	Gaikwad Navnath Dagdu	Nagpur	28.685%
GKEMPLPH-V-2581	Suresh Bhikulal Soni	Gadchiroli	28.695%
GKEMPLPH-V-10159	Kamble Mahadev Jyotiram	Nagpur	28.730%
GKEMPLPH-V-549	Gopikisan Mangilal Baheti	Gadchiroli	28.800%
GKEMPLPH-V-13142	Bapurao Shivram Kute	Nagpur	28.811%
GKEMPLPH-V-11115	Bansode Vaman Tulshiram	Nagpur	28.850%
GKEMPLPH-V-13423	Parag Bhalchandra Pimpalkar	Nagpur	28.933%
GKEMPLPH-V-14010	Kisan Kerba Lingayat	Nagpur	28.934%

<b>Third party assessment for monitoring period 01-October-2013 to 30-September-2014</b>			
<b>Identification number</b>	<b>Beneficiary name</b>	<b>District</b>	<b>Tested Efficiency</b>
GKEMPLPH-V-3414	Syed Sadiq Babu	Gadchiroli	27.081%
GKEMPLPH-V-10079	Suresh Kisan Londhe	Chandrapur	27.100%
GKEMPLPH-V-201	Jagtap Bhaurao Raoji	Gadchiroli	27.138%
GKEMPLPH-V-11498	Sahebrao Atmaram Magar	Nagpur	27.168%
GKEMPLPH-V-12597	Vilas Damaji Khandare	Nagpur	27.225%
GKEMPLPH-V-5983	Gaikwad Kumar Keshav	Chandrapur	27.342%
GKEMPLPH-V-3942	Kamble Uttam Lalba	Gadchiroli	27.362%

GKEMPLPH-V-8113	Kendra Parmeshwar Gyanoba	Chandrapur	27.363%
GKEMPLPH-V-13056	Narayan Dualatrao Gawali	Nagpur	27.408%
GKEMPLPH-V-5	Charan Pandurangji Chaudhary	Gadchiroli	27.415%
GKEMPLPH-V-4636	Shivajirao Narayanrao Nagwade	Chandrapur	27.435%
GKEMPLPH-V-2452	Jagannath Bapusaheb Garud	Gadchiroli	27.470%
GKEMPLPH-V-7237	Bodke Sheshabai Dadarao	Chandrapur	27.475%
GKEMPLPH-V-2093	Manik Balaji Ghodake	Gadchiroli	27.550%
GKEMPLPH-V-1042	Rajendra Baliram Patil	Gadchiroli	27.552%
GKEMPLPH-V-3116	Raosaheb Ramrao Bhad	Gadchiroli	27.564%
GKEMPLPH-V-3882	Sumanbai Madhukar Pitale	Gadchiroli	27.608%
GKEMPLPH-V-9629	Mahadev Raghoji Warghat	Chandrapur	27.626%
GKEMPLPH-V-8674	Raut Hariba Madhavrao	Chandrapur	27.631%
GKEMPLPH-V-14147	Shrirang Suryabhan Patil	Nagpur	27.675%
GKEMPLPH-V-6996	Salunke Sadhu Nivrutti	Chandrapur	27.677%
GKEMPLPH-V-7052	Sheikh Sarwar Mohammad Saab	Chandrapur	27.681%
GKEMPLPH-V-8479	Sheikh Makdoom Ahmedsab	Chandrapur	27.703%
GKEMPLPH-V-12553	Sidhdarth Daulatarav Chavhan	Nagpur	27.726%
GKEMPLPH-V-13633	Natthu Jayaji Nakhate	Nagpur	27.749%
GKEMPLPH-V-3793	Shivaji near Kasare	Gadchiroli	27.777%
GKEMPLPH-V-5572	Sonavne Rangnath Goroba	Chandrapur	27.812%
GKEMPLPH-V-13723	Gajanan Baliram Shewale	Nagpur	27.851%
GKEMPLPH-V-11439	Janrao Chimaji Parakhe	Nagpur	27.870%
GKEMPLPH-V-4890	Madhukar Janrao Dahiwade	Chandrapur	27.908%
GKEMPLPH-V-1100	Hemant Bhaskarrao Deshmukh	Gadchiroli	27.918%
GKEMPLPH-V-13719	Satish Devba Kute	Nagpur	27.923%
GKEMPLPH-V-13748	Shivaji Mahadji Sonone	Nagpur	27.933%
GKEMPLPH-V-4917	Uike Janabai Daulat	Chandrapur	27.940%
GKEMPLPH-V-4262	Gaikwad Mahadev Sambhaji	Gadchiroli	27.963%
GKEMPLPH-V-12838	Bhaskar Punjaji Ingle	Nagpur	27.987%
GKEMPLPH-V-1020	Maharu Daga Patil	Gadchiroli	28.040%
GKEMPLPH-V-12486	Nandkumar Kishor Suralkar	Nagpur	28.125%
GKEMPLPH-V-11329	Sheikh Muhammad Mansoor	Nagpur	28.344%
GKEMPLPH-V-12858	Shaikh Waid Papa	Nagpur	28.484%

<b>Third party assessment for monitoring period - 01-October-2014 to 30-September-2015</b>			
<b>Identification number</b>	<b>Beneficiary name</b>	<b>District</b>	<b>Tested Efficiency</b>
GKEMPLPH-V-6480	Sheikh Isaac Mahbub	Chandrapur	27.014%
GKEMPLPH-V-840	Dayaram Narayan Wankhede	Gadchiroli	27.030%
GKEMPLPH-V-1381	Balasaheb Prataprao Deshmukh	Gadchiroli	27.172%
GKEMPLPH-V-5496	Pitale Shivaji Vitthal	Chandrapur	27.182%
GKEMPLPH-V-6297	Kadam Rajaram Vitthalrao	Chandrapur	27.204%
GKEMPLPH-V-9203	Devidas Rajaram Patil	Chandrapur	27.218%
GKEMPLPH-V-14409	Ashwini Ravindra Ghule	Nagpur	27.243%
GKEMPLPH-V-220	Dhurve Dashrath Mohan	Gadchiroli	27.264%
GKEMPLPH-V-10299	Shringare Shankar Vishwanath	Nagpur	27.265%
GKEMPLPH-V-12939	Shankutalabai Narayan Borchate	Nagpur	27.267%
GKEMPLPH-V-10323	Lover Pandurang Rathod	Nagpur	27.278%
GKEMPLPH-V-12640	Prabhabei Kisanrao Gote	Nagpur	27.283%
GKEMPLPH-V-2785	Prasad Sitaram Hoge	Gadchiroli	27.317%
GKEMPLPH-V-13165	Uddhav Pandurang Thakare	Nagpur	27.329%

GKEMPLPH-V-11728	Mangesh Keshavrao Gawande	Nagpur	27.332%
GKEMPLPH-V-10481	Munjewar Baba Shabbir Ali	Nagpur	27.349%
GKEMPLPH-V-9052	Mangala Sadashiv Patil	Chandrapur	27.357%
GKEMPLPH-V-2668	Shrikant Uttamrao Kadam	Gadchiroli	27.411%
GKEMPLPH-V-10264	Mohale Bhimrao Sopan	Nagpur	27.417%
GKEMPLPH-V-8798	Sheikh Marimbi R.	Chandrapur	27.421%
GKEMPLPH-V-5003	Baraskar Tirva Maroti	Chandrapur	27.434%
GKEMPLPH-V-1867	Nagu Baba Khot	Gadchiroli	27.440%
GKEMPLPH-V-4749	Mahendra Govidam Ingle	Chandrapur	27.449%
GKEMPLPH-V-3749	Pilvate Dropada Shamrao	Gadchiroli	27.494%
GKEMPLPH-V-1533	Pramila Gopinath Zawar	Gadchiroli	27.588%
GKEMPLPH-V-6800	Mulla Chandsab Maktumb	Chandrapur	27.624%
GKEMPLPH-V-107	Kamble Pandhari Irappa	Gadchiroli	27.654%
GKEMPLPH-V-12411	Devanand Mahadev Manjare	Nagpur	27.694%
GKEMPLPH-V-10411	Melgire Madhukar Limbaji	Nagpur	27.735%
GKEMPLPH-V-921	Mahadeo Kisan Shegokar	Gadchiroli	27.742%
GKEMPLPH-V-3310	Shahanukh Khajusab Surambe	Gadchiroli	27.744%
GKEMPLPH-V-10568	Kamble Shantabai Goroba	Nagpur	27.752%
GKEMPLPH-V-3204	Magar Sandipan Shesherao	Gadchiroli	27.775%
GKEMPLPH-V-13209	Vitthal Kundalik Admane	Nagpur	27.837%
GKEMPLPH-V-11592	Maroti Uttamrav Kavre	Nagpur	27.869%
GKEMPLPH-V-5500	Battewad Chandu Rama	Chandrapur	27.903%
GKEMPLPH-V-7371	Suryavanshi Narsingh Mansingh	Chandrapur	27.917%
GKEMPLPH-V-6466	Pathan Mustafa Khan Nawaz Khan	Chandrapur	27.924%
GKEMPLPH-V-8405	Chavhan Sitaram Desu	Chandrapur	27.927%
GKEMPLPH-V-137	Mahbub Babamiyo Deshmukh	Gadchiroli	27.990%

<b>Third party assessment for monitoring period - 01-October-2015 to 30-September-2016</b>			
<b>Identification number</b>	<b>Beneficiary name</b>	<b>District</b>	<b>Tested Efficiency</b>
GKEMPLPH-V-7672	Gaikwad Suryabhan Gapati	Chandrapur	26.904%
GKEMPLPH-V-3714	Jadhav Dashrath Vitthal	Gadchiroli	26.911%
GKEMPLPH-V-12296	Shankar Shivaram Amale	Nagpur	26.919%
GKEMPLPH-V-3688	Sunita Pandurang Kamble	Gadchiroli	26.934%
GKEMPLPH-V-11098	Sonkamble Bhaskar Ram	Nagpur	26.964%
GKEMPLPH-V-4347	Gawale Madhav Gyanoba	Gadchiroli	26.985%
GKEMPLPH-V-9490	Prahlad Kashiram Badve	Chandrapur	27.033%
GKEMPLPH-V-4459	Sheikh Mahbub Jafar	Gadchiroli	27.067%
GKEMPLPH-V-8012	Bhande Rasika Shripati	Chandrapur	27.099%
GKEMPLPH-V-7130	Suryavanshi Rajaram Maak	Chandrapur	27.104%
GKEMPLPH-V-2602	Damodar Narayrao Bhalerao	Gadchiroli	27.107%
GKEMPLPH-V-5393	Karde Maroti Namdev	Chandrapur	27.156%
GKEMPLPH-V-2886	Balasaheb Munjaji Chokhat	Gadchiroli	27.163%
GKEMPLPH-V-5581	Pitale Sadashiv Ranba	Chandrapur	27.196%
GKEMPLPH-V-766	Anil Hiralal Jaiswal	Gadchiroli	27.246%
GKEMPLPH-V-14361	Balu Uddhav Kambale	Nagpur	27.262%
GKEMPLPH-V-14156	Bapurao Pandurang Landkar	Nagpur	27.264%
GKEMPLPH-V-10476	Sheikh Sattar Razzak	Nagpur	27.312%
GKEMPLPH-V-2016	Ankush Maroti Karande	Gadchiroli	27.339%

GKEMPLPH-V-10329	Jhunjare Maak Lakshma	Nagpur	27.349%
GKEMPLPH-V-10296	Gaikwad Dattatraya Maak	Nagpur	27.349%
GKEMPLPH-V-13028	Pralhad Devrao Gavli	Nagpur	27.381%
GKEMPLPH-V-10351	Dhage Nivruti Ram (Rao)	Nagpur	27.426%
GKEMPLPH-V-11655	Manorama Kashinath Tijare	Nagpur	27.441%
GKEMPLPH-V-9311	Vitthal Narayan Ingale	Chandrapur	27.474%
GKEMPLPH-V-6414	Sheikh Sharif Hassan	Chandrapur	27.517%
GKEMPLPH-V-13108	Kantabai Rajaram Kakade	Nagpur	27.540%
GKEMPLPH-V-11449	Pundlik Ramdas Nare	Nagpur	27.604%
GKEMPLPH-V-3751	Dhage Lahu Dhondiram	Gadchiroli	27.624%
GKEMPLPH-V-460	Shriram Jayaji Gore	Gadchiroli	27.638%
GKEMPLPH-V-5852	Acharya Rohidas Vajinath	Chandrapur	27.641%
GKEMPLPH-V-8017	Kamble Babu Bhujanga	Chandrapur	27.649%
GKEMPLPH-V-1243	Saiyad Lal Abdul Kadar	Gadchiroli	27.653%
GKEMPLPH-V-9773	Panjab Maroti Sakhare	Chandrapur	27.702%
GKEMPLPH-V-4576	Subhash Chandanmal Bhandari	Chandrapur	27.836%
GKEMPLPH-V-6946	Bhimale Dayanand Shivram	Chandrapur	27.869%
GKEMPLPH-V-10994	Sheikh Ilahi Babu	Nagpur	27.892%
GKEMPLPH-V-14431	Lata Bajarang Bhujabal	Nagpur	27.970%
GKEMPLPH-V-435	Nanarao Uttamrao Deshmukh	Gadchiroli	27.999%
GKEMPLPH-V-1075	Shripati Badhu Patil	Gadchiroli	28.859%

<b>Third party assessment for monitoring period - 01-October-2016 to 30-September-2017</b>			
<b>Identification number</b>	<b>Beneficiary name</b>	<b>District</b>	<b>Tested Efficiency</b>
GKEMPLPH-V-13827	Ashok Narayan Bavisakar	Nagpur	26.005%
GKEMPLPH-V-12666	Devidas Bapurao Turak	Nagpur	26.069%
GKEMPLPH-V-6810	Komple Govind Pandhari	Chandrapur	26.098%
GKEMPLPH-V-11292	Sheikh Mahmoud Hamid	Nagpur	26.173%
GKEMPLPH-V-3445	Suryavanshi Bhagwat Nagnath	Gadchiroli	26.189%
GKEMPLPH-V-4131	Bhosle Ram Gangaram	Gadchiroli	26.292%
GKEMPLPH-V-2384	Vitthal Dagdoji Khandare	Gadchiroli	26.295%
GKEMPLPH-V-5594	Salve Kashibai Dattu	Chandrapur	26.307%
GKEMPLPH-V-13999	Dattatray Vishnu Lahane	Nagpur	26.343%
GKEMPLPH-V-14364	Samadhan Udhav Kambale	Nagpur	26.345%
GKEMPLPH-V-9683	Dnyaneshwar Vishnupant Raut	Chandrapur	26.518%
GKEMPLPH-V-1477	Ramsing Gobaji Patil	Gadchiroli	26.523%
GKEMPLPH-V-4401	Waghmare Vishwanath Gangaram	Gadchiroli	26.524%
GKEMPLPH-V-11032	Lavate Yashwant Namdevrao	Nagpur	26.548%
GKEMPLPH-V-3315	Yadav Shivaji Bapu	Gadchiroli	26.561%
GKEMPLPH-V-13506	Raju Gyanuji Ingale	Nagpur	26.574%
GKEMPLPH-V-7717	Bankat Shripati Ujale	Chandrapur	26.689%
GKEMPLPH-V-10176	Devidas Naththu Kumre	Nagpur	26.746%
GKEMPLPH-V-2058	Ujjvalabai Vasanttrao Dahiphale	Gadchiroli	26.803%
GKEMPLPH-V-12309	Anup Pradip Jirapure	Nagpur	26.814%
GKEMPLPH-V-3806	Sheikh Gafoor Chandsaheb	Gadchiroli	26.858%
GKEMPLPH-V-10579	Sheikh Isub Usman	Nagpur	26.890%
GKEMPLPH-V-7723	Gaikwad Rajabai Vithoba	Chandrapur	26.892%
GKEMPLPH-V-7626	Kamble Bhagwan Sambhaji	Chandrapur	26.894%

GKEMPLPH-V-1421	Krishna Lahu Patil	Gadchiroli	26.907%
GKEMPLPH-V-7008	Suryavanshi Chhabubai Nagnath	Chandrapur	26.926%
GKEMPLPH-V-2502	Digambar Bapuswami	Gadchiroli	26.989%
GKEMPLPH-V-10576	Ghere Gyanoba Motiram	Nagpur	27.099%
GKEMPLPH-V-1173	Niwruiti Wamanrao Bhalerao	Gadchiroli	27.199%
GKEMPLPH-V-6319	Hamante Indubai Khandu	Chandrapur	27.223%
GKEMPLPH-V-8440	Mamde Babaru Vav Limbaji	Chandrapur	27.227%
GKEMPLPH-V-5364	Ambekar Ranguna Satish	Chandrapur	27.255%
GKEMPLPH-V-708	Prakash Vitthalrao Metangale	Gadchiroli	27.262%
GKEMPLPH-V-9088	Bharat Sukhadev Avhale	Chandrapur	27.324%
GKEMPLPH-V-13565	Digambar Shamrav Bobade	Nagpur	27.379%
GKEMPLPH-V-12480	Devidas Bhaduji Kambale	Nagpur	27.475%
GKEMPLPH-V-12524	Anil Krushnrao Pande	Nagpur	27.508%
GKEMPLPH-V-2875	Keshaorao Trimbakrao Rodge	Gadchiroli	27.558%
GKEMPLPH-V-4709	Dattatrya Dashrath Baghe	Chandrapur	27.576%
GKEMPLPH-V-7421	Kamble Dayanand Nagnath	Chandrapur	27.640%

## 5.2 Project Emissions

Project emissions are considered as zero for this project as no fossil fuels are used

## 5.3 Leakage

The leakage emission per cook stove is estimated as difference between the emission reduction estimated considering the actual value of Bold and emission reduction estimated considering the value of Bold obtained by multiplying Bold with a net to gross adjustment factor of 0.95.

Parameter	Data	Unit
Leakage emission	0.053	tCO <sub>2e</sub> /cook stove/ year
Leakage emission due to use of traditional cook stove usage (assuming 0 for ex-ante)	0	tCO <sub>2e</sub> /cook stove/ year
Leakage emission, (LEy, per cook stove)	0.053	tCO <sub>2e</sub> /cook stove/ year

Therefore, the total leakage emission (LEy) for the project activity assuming 90% of 14,530 Nos. cook stove distributed is 688 tCO<sub>2e</sub> /year.

The leakage emissions achieved for this monitoring period is 3,264 tCO<sub>2e</sub> /year.

## 5.4 Net GHG Emission Reductions and Removals

Year	Baseline emissions or removals (tCO <sub>2e</sub> )	Project emissions or removals (tCO <sub>2e</sub> )	Leakage emissions (tCO <sub>2e</sub> )	Net GHG emission reductions or removals (tCO <sub>2e</sub> )
<b>01-October-2012 to 30-</b>	13,286	0	665	12,621

<b>September-2013</b>				
<b>01-October-2013 to 30-September-2014</b>	13,215	0	661	12,554
<b>01-October-2014 to 30-September-2015</b>	13,106	0	656	12,450
<b>01-October-2015 to 30-September-2016</b>	13,074	0	654	12,420
<b>01-October-2016 to 30-September-2017</b>	12,542	0	628	11,914
<b>Total</b>	<b>65,223</b>	<b>0</b>	<b>3,264</b>	<b>61,959</b>

Comparison with the actual emission reductions achieved with the estimated emission reductions:

<b>Duration</b>	<b>Net emission reduction for the project activity in the year y, ER<sub>y</sub></b>	<b>Estimated Emission Reductions</b>	<b>Comparison</b>
01-October-2012 to 30-September-2017	<b>61,959</b>	<b>65,310</b>	<b>-5.41%</b>