



**Gold Standard**<sup>®</sup>  
for the Global Goals

**TEMPLATE**

# MONITORING REPORT

---

**PUBLICATION DATE 14.10.2020**

**VERSION v. 1.1**

**RELATED SUPPORT - TEMPLATE GUIDE Monitoring Report v. 1.1**

---

This document contains the following Sections

Key Project Information

SECTION A - Description of project

SECTION B - Implementation of project

SECTION C - Description of monitoring system applied by the project

SECTION D - Data and parameters

SECTION E - Calculation of SDG Impacts

SECTION F - Safeguards Reporting

SECTION G - Stakeholder inputs and legal disputes

## KEY PROJECT INFORMATION

### PROGRAMME OF ACTIVITY INFORMATION

<b>GS ID of Programme</b>	GS10789
<b>Title of the programme</b>	ECO_A_BURN multi-country Clean Cooking Programme
<b>Version of POA-DD applicable to this monitoring report</b>	4.1
<b>Name and GS ID of fully Validated CPA/VPAs (i.e. non compliance check)</b>	<p>GS10789: ECOA_BURN multi-country Clean Cooking Programme; GS ID: GS10789,</p> <p>GS10789 VPA1: Efficient and Clean Cooking for households in Somalia; GS ID: GS10790,</p> <p>GS10789 VPA2: Efficient and Clean Cooking for households in Kenya; GS ID: GS10791,</p> <p>GS10789 VPA3: Efficient and Clean Cooking for households in Kenya; GS ID: GS10792,</p> <p>GS10789 VPA4: Efficient and Clean Cooking for households in Kenya; GS ID: GS11432,</p> <p>GS10789 VPA5: Efficient and Clean Cooking for households in the Democratic Republic of Congo (DRC); GS ID: GS11433,</p> <p>GS10789 VPA 6: Efficient and Clean Cooking for households in Cote d'Ivoire; GS ID: 11434</p> <p>GS10789 VPA7: Efficient and Clean Cooking for households in the Democratic Republic of Congo (DRC); GS ID: GS11435,</p> <p>GS10789 VPA8: Efficient and Clean Cooking for households in Kenya; GS ID: GS11603,</p> <p>GS10789 VPA9: Efficient and Clean Cooking for households in Mozambique; GS ID: GS11605,</p> <p>GS10789 VPA10: Efficient and Clean Cooking for households in Mozambique; GS ID: GS11606,</p> <p>GS10789 VPA42: Efficient and Clean Cooking for households in Tanzania; GS ID: GS11732,</p> <p>GS10789 VPA47: Efficient and Clean Cooking for households in Tanzania; GS ID: GS11731,</p> <p>GS10789 GS11673 VPA 61: Efficient and Clean Cooking for households in Nigeria; GS ID: GS11671,</p> <p>GS10789 VPA66: Efficient and Clean Cooking for households in Nigeria; GS ID: GS11741.</p>



### Key Project Information

<b>GS ID (s) of Project (s)</b>	GS 10790
<b>Title of the project (s) covered by monitoring report</b>	GS10789 VPA1: Efficient and Clean Cooking for households in Somalia
<b>Version number of the PDD/VPA-DD (s) applicable to this monitoring report</b>	4.0
<b>Version number of the monitoring report</b>	05
<b>Completion date of the monitoring report</b>	04/09/2024
<b>Date of project design certification</b>	01/10/2021
<b>Date of Last Annual Report</b>	20/12/2023
<b>Monitoring period number</b>	4.0
<b>Duration of this monitoring period</b>	11/12/2022 to 24/02/2024(Both days included)
<b>Project Representative</b>	BURN Manufacturing Co.
<b>Host Country</b>	Federal Republic of Somalia
<b>Activity Requirements applied</b>	<input checked="" type="checkbox"/> Community Services Activities <input type="checkbox"/> Renewable Energy Activities <input type="checkbox"/> Land Use and Forestry Activities/Risks & Capacities <input type="checkbox"/> N/A
<b>Methodology (ies) applied and version number</b>	Technologies and Practices to Displace Decentralized Thermal Energy Consumption (TPDDTEC); Version 3.1
<b>Product Requirements applied</b>	<input checked="" type="checkbox"/> GHG Emissions Reduction & Sequestration <input type="checkbox"/> Renewable Energy Label <input type="checkbox"/> N/A

**Table 1 – Sustainable Development Contributions Achieved**

Sustainable Development Goals Targeted	SDG Impact	Amount Achieved	Units/ Products
13 Climate Action (mandatory)	Emission Reductions	1,039,765	VERs
1 (No poverty) End poverty in all its forms everywhere	Monetary savings related to the purchase of firewood	45%	Equivalent monetary savings in %
3 (Good Health and Wellbeing) Ensure healthy lives and promote well-being for all at all ages	Perceived air quality	100%	Households in % perceiving improved air quality
7. (Affordable and Clean Energy) Target 7.1; Ensure universal access to affordable, reliable, sustainable, and modern energy services	Number of sold/distributed	118,954	Number of sold/distributed ICS in use
8. (Decent Work and Economic Growth) Target 8.5; Promote sustained, inclusive, and sustainable economic growth, full and productive employment and decent work for all	No. of jobs created	125	Number of local jobs created

**Table 2 – Product Vintages**

		Amount Achieved
Start Dates	End Dates	VERs
11/12/2022	31/12/2022	49,513
01/01/2023	31/12/2023	860,576

01/01/2024	24/02/2024	129,676
<b>TOTAL</b>		<b>1,039,765</b>

SECTION A. DESCRIPTION OF PROJECT

**A.1. General description of project**

>>

This VPA deploys efficient improved charcoal cookstoves (ICS), known as ‘Jikokoas’ reducing woody biomass consumption for urban and peri-urban households in the Federal Republic of Somalia.

The VPA is implemented by ECOA Climate Capital (in the following ‘ECOA’), the biggest manufacturer of efficient improved cookstoves in Sub-Saharan Africa producing all its stoves in the first and only modern cookstove manufacturing facility in Kenya.

The scenario existing prior to the implementation of the project is the use of inefficient traditional cookstoves, consuming non-renewable charcoal and firewood. The high biomass consumption has negative impacts on the environment leading to deforestation and land degradation, Greenhouse Gas Emissions (GHG) emissions, loss of soil fertility and soils’ reduced ability of water retention. Further, indoor air pollution through health-damaging pollutants while combusting firewood and charcoal result in diseases like e.g. pneumonia, stroke, ischaemic heart diseases, chronic obstructive pulmonary diseases and lung cancer.

Inefficient and unsustainable charcoal production in Somalia is a grave concern to forests and other biomass stocks in the country. Charcoal production in the country remain widespread accounting for 80 to 90 percent of energy needs<sup>1</sup>.

As more Somalis turn to charcoal as an affordable energy option, experts say the growing demand is fueling unsustainable levels of production and accelerating climate change amid the country’s worst drought in four decades.<sup>2</sup>

---

<sup>1</sup> <https://climatepromise.undp.org/es/node/248>

<sup>2</sup> <https://www.theguardian.com/global-development/2022/aug/08/somalia-deforestation-charcoal-farmers-logging-al-shabaab>

“In Somalia, there is no controlled supply of charcoal in urban areas, and this contributes to deforestation as an increase in population in these areas results to an increase in demand for charcoal. Also due to the cost of transporting charcoal from the rural areas where it is produced to the urban areas where it is widely consumed there has been a steady increase in its price and this have inhibited the growth of small-scale traders who use wood, such as fish sellers, and has also affected household budgets. Furthermore, the use of wood presently surpasses the regrowth of forests and reforestation efforts have been very poor”

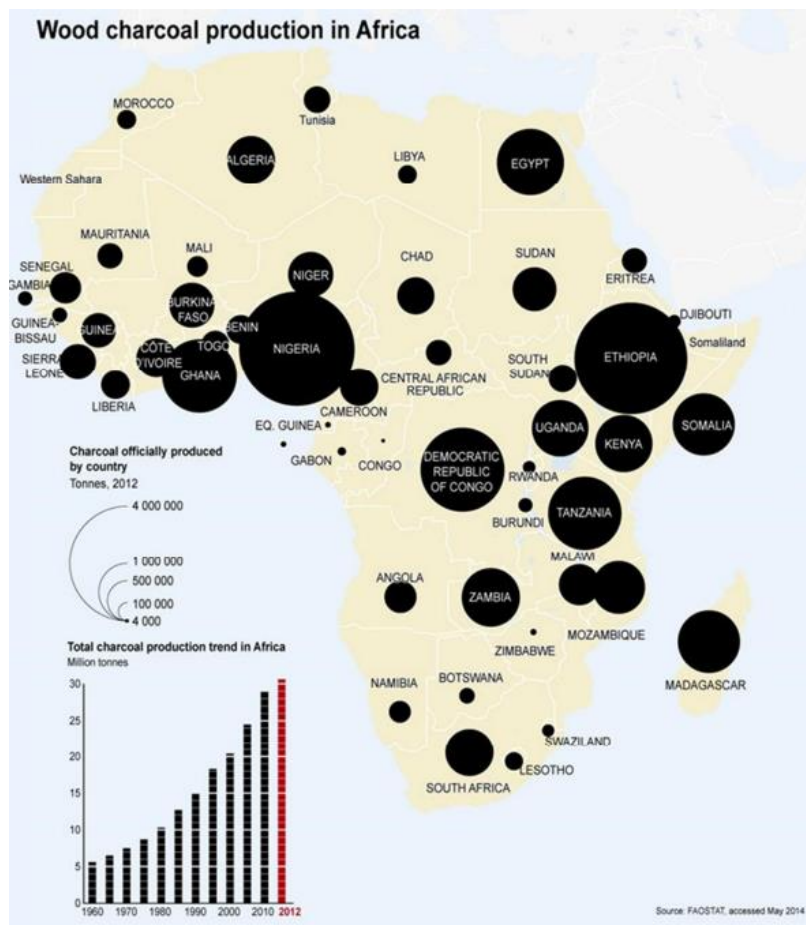


Figure 1: Map of Africa highlighting countries with the highest Charcoal production rates

The government of the Federal Republic of Somalia, in its updated 2021 NDC, recognizes the importance of clean cooking to the Country. Somalia is thus committed to pursuing a low emission sustainable development pathway. Under the updated NDC, Somalia has set a target of achieving 30% emissions reductions against the Business

As Usual (BAU) scenario estimate of 107.39 MtCO<sub>2</sub>eq by 2030<sup>3</sup>. To achieve this target, Somalia will aim to reduce and avoid its GHG emissions by about 32.40MtCO<sub>2</sub>eq relative to the BAU scenario by 2030.

The key barriers to clean cooking adoption in Somalia can be summarised thematically as follows:

**Affordability:** This is reportedly one of Somalia's most significant barriers to adopting and using clean cooking. According to Somali Integrated Household Budget Survey in 2022, 54.4% of Somalis live below the poverty line.<sup>4</sup>

**Awareness Creation:** Despite noteworthy actions in this area, there is a considerable need to intensify awareness, especially within the nomadic communities. There is low access to conventional information channels like tv and social media, which could result in low awareness in these areas.

**Supply Constraints:** Supply constraints can hinder the adoption of clean cooking technologies by limiting their existence in certain Somalia markets, leading to fewer options for consumers and a challenge to access these technologies.

As is referenced in this Monitoring Report, BURN has rolled out mechanism to mitigate these technology adoption barriers which have been supported by the carbon financing used to implement the project activity.

Carbon financing has been used to subsidize the project stove costs by up to 35.48% (a reduction in the stove price from \$31 to \$20). BURN has also expanded its in-country sales agents' teams to implement targeted distribution country wide to ensure that stove sales are targeted to the households who meet the baseline scenario definition. A robust end user awareness mechanism programme was also implemented in Somalia to promote project stove usage and to educate potential end users on the personal and communal benefits of the project stoves.

---

<sup>3</sup> <https://moecc.gov.so/nationally-determined-contributions/#>

<sup>4</sup> <https://nbs.gov.so/wp-content/uploads/2023/12/Somalia-Poverty-Report-2023.pdf>

## Technologies and/or measures

The VPA deploys an efficient cookstove known as Jikokoa intended for use with charcoal. The technology was designed and developed by BURN. These efficient cookstoves translate into considerable charcoal savings when compared to traditional cookstoves. The Jikokoa stove’s design considers the local cooking culture in the project area to ensure that improvements in technology and improved standards of living do not come at the expense of cultural traditions. A total of 136,563 stoves have been distributed till MPIV.

### A.2. Location of project

>>

Host country: Federal Republic of Somalia

All the 6 federal member states and Banadir Regional Administration (BRA) of the Federal Republic of Somalia are covered by the VPA.

GPS coordinates for the Federal Republic of Somalia<sup>5</sup>:

Latitude: 5° 09' 47.83"North

Longitude: 46° 12' 13.32"East

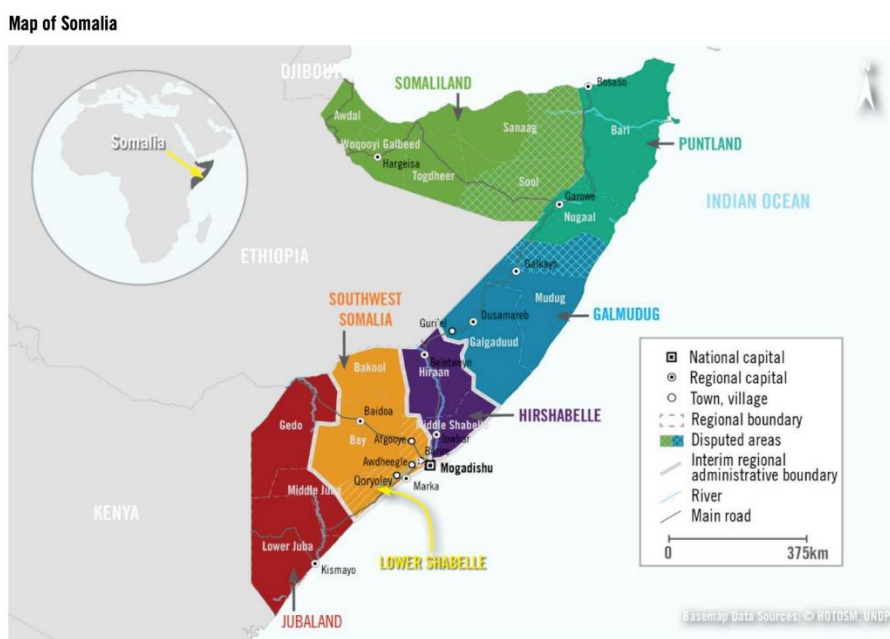


Figure A.2.1: Map of The Federal Republic of Somalia

<sup>5</sup> <https://latitude.to/map/so/somalia>

### **A.3. Reference of applied methodology**

>>

Technologies and Practices to Displace Decentralized Thermal Energy Consumption, version 3.1<sup>6</sup>

Tools applied in this VPA are:

1. CDM Methodological tool 30: Calculation of the fraction of non-renewable biomass. (CDM Tool 30 EB 115 Annex 22 ver. 03.0)<sup>7</sup>

### **A.4. Crediting period of project**

>>

The crediting period of the project is from 02/10/2019 to 01/10/2024 (both days included). The crediting period for this project is 5 years. The crediting period may be renewed twice in line with the Community Services Activity Requirements.

## **SECTION B. IMPLEMENTATION OF PROJECT**

### **B.1. Description of implemented project**

>>

#### a) Purpose of the specific-case VPA(s) and the measures taken for GHG emission reductions or net GHG removals by sinks

The purpose of the VPA is to achieve widespread distribution and effective use of efficient cooking technologies in urban and peri-urban households. The widespread use of efficient cooking technologies will result in vastly reduced woody biomass consumption. Reduced woody biomass consumption will result in GHG emission reductions, relative to the applicable non-renewable biomass factor.

#### b) Description of the technology employed and installed equipment and/or infrastructure, including information requested by the eligibility criteria.

---

<sup>6</sup> [https://globalgoals.goldstandard.org/standards/407\\_V3.1\\_EE\\_ICS\\_Technologies-and-Practices-to-Displace-Decentralized-Thermal-Energy-TPDDTECCconsumption-.pdf](https://globalgoals.goldstandard.org/standards/407_V3.1_EE_ICS_Technologies-and-Practices-to-Displace-Decentralized-Thermal-Energy-TPDDTECCconsumption-.pdf)

<sup>7</sup> <https://cdm.unfccc.int/methodologies/PAmethodologies/tools/am-tool-30-v3.0.pdf>

The efficient cook stove relies on two main design principles to achieve a high thermal efficiency, namely improved airflow, and thermal insulation. Improved airflow design allows better fuel-air mixing and regulation of the fuel-air mixture, increasing the rate at which oxygen is delivered to fuel in the combustion chamber. The increased flow rate of oxygen allows the combustion to occur at a higher temperature. The thermal insulation of the efficient cooking stove ensures thermal energy is directed to the cooking surface and is does not become waste heat. The VPA deploys efficient charcoal cooking stoves known as Jikokoa Classic (G3.5) and Jikokoa Xtra (G4) till the end of MP4, which have been designed and developed by BURN Manufacturing Co.

Please see the technical specifications in the following table:

**Jikokoa Classic G3.5**

<b>Stove Manufacturer</b>	BURN
<b>Stove Model</b>	Jikokoa Classic (G3.5)
<b>Stove Type</b>	Charcoal Stove

**Materials**

Stove Body	CRCA Carbon Steel painted high gloss black epoxy powder coat
Pot Rest	Stainless Steel
Burning Chamber	Stainless Steel
Ash Tray	Aluzinc
Feet	Stainless Steel

**Measurements**

Parameter	Unit	Value
Height	cm	24.4 cm
Diameter (stove top)	cm	26.0 cm
Weight	kg	4 kg
Fuel Chamber Volume	cm <sup>3</sup>	954 cm <sup>3</sup>
Packaging Dimensions	cm	29.0 L x 28.5 W x 25.1 H

**WBT Results**

Parameter	Unit	Value
High power thermal efficiency (average of cold start and hot start)	%	48.1%
Firepower	kW	2.05
Boil Time	minutes	27.72

**Lifetime**

Warranty	2 years
Estimated Lifetime <sup>8</sup>	7 to 10 years

**Jikokoa Xtra (G4)**

<b>Stove Manufacturer</b>	BURN
<b>Stove Model</b>	Jikokoa Xtra (G4)
<b>Stove Type</b>	Charcoal Stove

**Materials**

Stove Body	CRCA Carbon Steel painted high gloss black epoxy powder coat
Pot Rest	Stainless Steel & Cast Iron
Burning Chamber	Stainless Steel
Ash Tray	Aluzinc
Feet	Aluzinc

**Measurements**

Parameter	Unit	Value
Height	cm	27.0 cm
Diameter (stove top)	cm	30.2 cm
Weight	kg	5.5 kg
Fuel Chamber Volume	cm <sup>3</sup>	1030 cm <sup>3</sup>
Packaging Dimensions	cm	30.2 L x 30.5 W x 27.5 H

**WBT Results**

Parameter	Unit	Value
High power thermal efficiency (average of cold start and hot start)	%	44.6%
Firepower	kW	2.21
Boil Time	minutes	27.96

**Lifetime**

Warranty	2 years
Estimated Lifetime <sup>9</sup>	7 to 10 years

<sup>8</sup> The lifetime of the Jikokoa Classic (G3.5) may go beyond indicated life. Hence, depending on the usage rate of the stoves, stoves will be either removed from the database after the end of its lifetime and not credited anymore or remain in the database for crediting until the moment a significant drop in usage rate is observed. As an alternative, worn out ICS may be replaced by newly distributed stoves. Manufacturer’s declaration about the ICS lifetime has been submitted to the VVB

<sup>9</sup> The lifetime of the Jikokoa Xtra (G4) may go beyond indicated life. Hence, depending on the usage rate of the stoves, stoves will be either removed from the database after the end of its lifetime and not credited anymore or



Fig B.1.1: To the Left to right: Jikoko Classic, Jikoko Xtra,

The project has been implemented as described in the PDD. There are no changes to the project design. Till the end of this monitoring period, a total of 136,563 Jikoko Stoves were reported installed under the project and that are claiming credits in MPIV. The below table shows year wise distribution of the stoves for the VPA:

Year of distribution	Total Stoves Distributed
2019	11,526
2020	64,914
2021	53,519
2022	6,604
<b>Total</b>	<b>136,563</b>

### B.1.1 Forward Action Requests

>> N/A

## B.2. Post-Design Certification changes

>>

B.2.1. Temporary deviations from the approved Monitoring & Reporting Plan, methodology or standardized baseline

>>

PD has requested for the following deviation:

---

remain in the database for crediting until the moment a significant drop in usage rate is observed. As an alternative, worn out ICS may be replaced by newly distributed stoves. Manufacturer’s declaration about the ICS lifetime has been submitted to the VVB

BURN has requested that the VVB Earthood be allowed to carry out the verification audit remotely as VPA is situated in a conflict zone.

GS Decision: The Project Developer request for the VVB Earthood to conduct remote assessment cannot be approved as per the para 2.1.2 of the Annex B of Principles and Requirements version 1, but in view of the conflict zone, PD shall ensure that the Objective Observer (OO) has been selected for the on-site audit as required by para 2.1.2 of the Annex B of Principles and Requirements version 1.2 and have conducted the audit under the guidance of a GS approved VVB.

#### B.2.2. Corrections

>>

No Corrections

#### B.2.3. Changes to start date of crediting period

>>

No Change

#### B.2.4. Permanent changes from the Design Certified monitoring plan, applied methodology or applied standardized baseline

>>

No changes

#### B.2.5. Changes to project design of approved project

>> N/A

## SECTION C. DESCRIPTION OF MONITORING SYSTEM APPLIED BY THE PROJECT

>>

Prior to launching sales and distribution efforts in Somalia, BURN conducted detailed feasibility studies and willingness to pay assessments to ensure that households who received the project stoves were compliant with the baseline scenario in the VPA DD.

In its early expansion into Somalia, BURN worked with different local distributors to sell

project stoves to households in areas that had already been screened from the Feasibility Studies. This was BURN's B2B approach towards stove distribution. Soon thereafter, however, BURN opted to optimize its sales strategy. Rather than rely on distributors, BURN employed its B2C strategy, focusing on a direct relationship and interface between the company and its end users.

In the B2C approach, BURN employs a three-tier product-market fit assessment. Feasibility studies are first conducted to ensure that sales agents are assigned to locations in the Country that have biomass consumption trends that align with the end user characteristics established in the Baseline Scenario. Once the feasibility studies are conducted, the sales agents then conduct end user prospecting assignments at end user households or marketplaces. These prospecting exercises offer an interactive engagement where households are educated on the project stove and benefits. Once prospecting exercises are complete, sales agents register end user data at the point of delivery, allowing BURN to develop a database of end users who can be reached for annual monitoring exercises, or the numerous end user engagement activities BURN routinely engages in.

All BURN stoves have a unique serial number to enable tracking and ensure no double counting.

Accordingly, the VPA database generation process adopts the mechanism specified in the flow chart below:

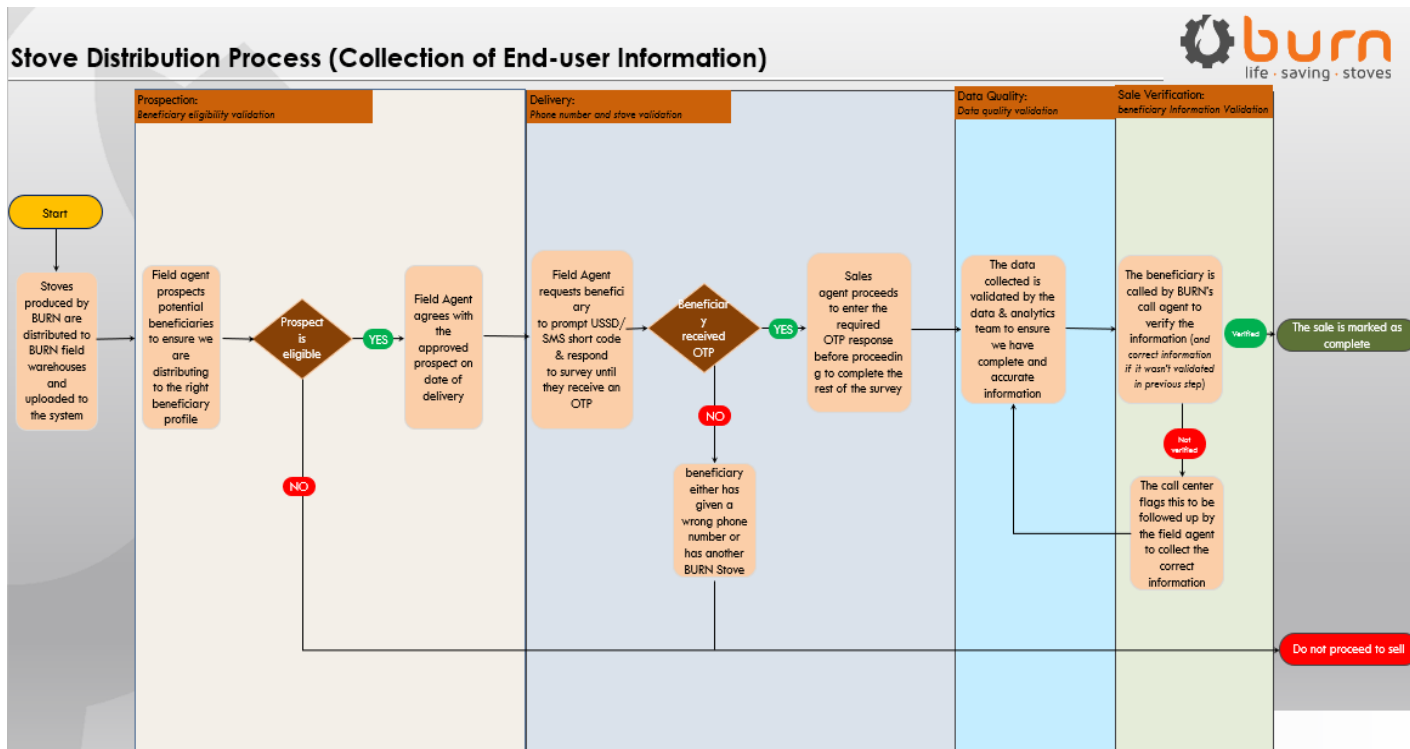


Figure C.1: VPA Sales / Distribution Process

The CME operates and manages an electronic data management system that stores information on and track all efficient cooking technologies under the VPA. As a minimum the following information was recorded through a cloud-based web platform (KoboCollect) in the database:

- Unique serial number (USN) of the ICS
- Date of shipment to distributor/retailer
- Name of distributor/retailer
- Quantity of ICS distributed
- Geographic area (state) of distributor/retailer
- Model type of the ICS

Besides, the distribution database contains end-user contact details (name, state, mobile number, or national ID number) of at least 10 times the survey and field test sample size (including usage surveys for each age of product), to ensure an adequate end-user pool to which random sampling can be applied. To claim the ICS warranty, end-users have to register their end-user details at the point of sale, or through SMS and/or phone calls.

In accordance with the management system described in the PoA DD, this VPA has a unique database that tracks and records the following information:

- Name and ID of the VPA
- Technology deployed (Name of the device model)
- Name and contact details of the registered end-users or distributors/installers for the VPA
- Date of registration of the end user
- Serial numbers of the device belonging to the VPA and corresponding information required for monitoring
- Start of VPA crediting period

The monitoring system in effect for the VPA as implemented is as illustrated below:

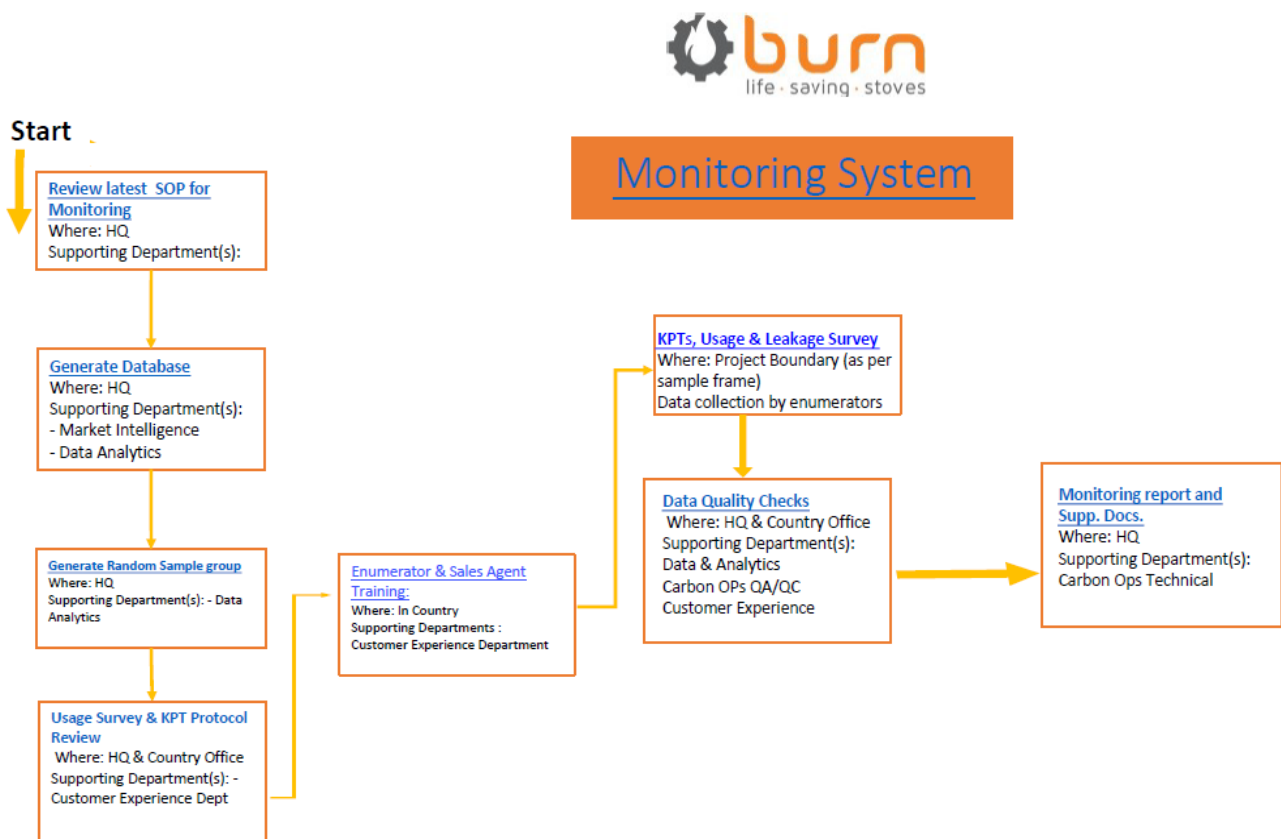


Figure C.2: Monitoring System Flow Chart

A detailed description of the usage survey and KPTs employed in this monitoring period is detailed in Section D.4 of this MR.

Mechanism to avoid double counting:

The Unique Serial Number (“USN”) of each ICS entered the sales database are linked to a sales date (recorded during distribution) or shipment date. Thus, for any monitoring period it is possible to calculate the period for which the stoves included in the emissions reduction calculations are deemed operating. If for e.g. a stove has been operating for 180 days, then the full-year operating fraction is 0.493 (=180/365 days stove will be counted as operational (= start crediting) from the next day following the stove distribution or after a conservatively calculated period of the date of shipment. The sum of the operating fractions of all appliances determines the equivalent full-time appliances for the monitoring period.

Burn initially implemented a 9-digit number format for the initial phase of stove distribution. However, in later stages, a more robust system has been adopted, transitioning to a 6-digit number pattern . The USN has the following format comprising of 9 digits<sup>10</sup>:

1 <sup>st</sup> digit	2 <sup>nd</sup> digit	3 <sup>rd</sup>	4 <sup>th</sup>	5 <sup>th</sup>	6 <sup>th</sup>	7 <sup>th</sup>	8 <sup>th</sup>	9 <sup>th</sup>
Product ID	100000 <sup>th</sup>	10000 <sup>th</sup>	1000 <sup>th</sup>	100 <sup>th</sup>	10 <sup>th</sup>	Random	Random	1 <sup>st</sup>
<b>ID</b>	<b>S1</b>	<b>S2</b>	<b>S3</b>	<b>S4</b>	<b>S5</b>	<b>R1</b>	<b>R2</b>	<b>S6</b>

Each section on the USN can be identified the product as follows:

- Product type: the first digit identifies the stove type (Jikokoa)
- # Production number: S1 to S6 are digit slots for a sequential numbering ordered by time of production, allowing for 1 million unique serial numbers. For instance, the first stove off the line would have “000000” for its S1-S6 digits.
- Random digits: R1 and R2 are 2 random digits placed in slots 7 & 8, to make the USN unpredictable to outside parties,

Example for USN: 105097338

---

<sup>10</sup> It is possible that the USN format may change in future.

**TEMPLATE- Monitoring Report**

- “1” stands for Jikokoa product ID
- “050978” for S1-S6, meaning it was the 50,979<sup>th</sup> Jikokoa produced,
- “33” for R1-R2, the random digits

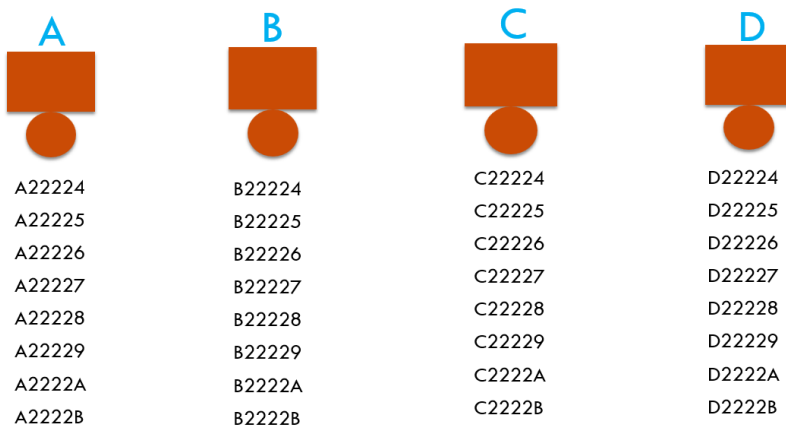
The 6-digit format, is explained as follows:

Machine Identifier	SKU Identifier	SN	SN	SN	SN
A	2	Y	Y	S	2

Each section on the USN will identify the product as follows:

- The first character is based on the laser machine.
- The next unique identifier is based on the SKU allowing us to identify a product with just the SN.
- The last four characters is a sequential alphanumeric sequence.
- These characters follow a particular sequence, guaranteeing the absence of repetition.

Examples for 6 digit USN pattern:



Example for USN: A22224

- “A” stands for identification of laser machine
- The first “2” stands for the identification of SKU.

“2224”, the random digits.

The data for the system will be updated and modified as required to allow for optimal performance of each VPA implementation and monitoring. All data will be stored for at least two (2) years after the expiry of the crediting period.

The original serial number system, consisting of a 9-digit pattern, was initially employed for the stoves installed in the current VPA. In a strategic move to enhance efficiency by reducing laser etching time, a new 6-digit serial number system has been implemented. This streamlined system not only provides a more robust approach but also drastically reduces production time. The integration of alphanumeric characters expands the range of serial number combinations, despite the reduced digit count, thereby optimizing the overall system.

SECTION D. DATA AND PARAMETERS

**D.1. Data and parameters fixed ex ante or at renewal of crediting period**

>>

**SDG13**

Data/parameter	$EF_{b,CO_2}$
Unit	tCO <sub>2</sub> e/TJ
Description	CO <sub>2</sub> emission factor arising from use of fuel wood in baseline scenario
Source of data	2006 IPCC Guidelines for National Greenhouse Gas Inventories, volume 2, chapter 2 (Table 2.5)
Value(s) applied	112
Choice of data or Measurement methods and procedures	Default IPCC value for fuel wood is applied  112 tCO <sub>2</sub> e/TJ * 0.156 TJ/t charcoal = 1.7472 tCO <sub>2</sub> e/t charcoal (the value used for ER calculation).
Purpose of data	Calculation of baseline scenario
Additional comment	If EF is in units of tCO <sub>2</sub> /t <sub>fuel</sub> , remove NCV term from emission calculations. Term can include a combination of emission factors from fuel production, transport, and use.

Data/parameter	$EF_{b,non-CO_2}$
Unit	tCO <sub>2</sub> e/t charcoal

Description	Non-CO <sub>2</sub> emission factor arising from use of fuel wood in baseline scenario
Source of data	2006 IPCC Guidelines for National Greenhouse Gas Inventories, volume 2, chapter 2 (Table 2.5)
Value(s) applied	0.1476
Choice of data or Measurement methods and procedures	IPCC Default value for wood
Purpose of data	Calculation of baseline scenario
Additional comment	The non-CO <sub>2</sub> emission factor is based on the AR5 GWP values.

Data/parameter	EF <sub>p,CO<sub>2</sub></sub>
Unit	tCO <sub>2</sub> e/t Charcoal
Description	CO <sub>2</sub> emission factor arising from use of fuel wood in project scenario
Source of data	2006 IPCC Guidelines for National Greenhouse Gas Inventories, volume 2, chapter 2 (Table 2.5)
Value(s) applied	112
Choice of data or Measurement methods and procedures	Default IPCC value for fuel wood is applied  112 tCO <sub>2</sub> e/TJ * 0.156 TJ/t charcoal = 1.7472 tCO <sub>2</sub> e/t charcoal (the value used for ER calculation).
Purpose of data	Calculation of project scenario
Additional comment	If EF is in units of tCO <sub>2</sub> /t <sub>fuel</sub> , remove NCV term from emission calculations. Term can include a combination of emission factors from fuel production, transport, and use.

Data/parameter	EF <sub>p,non-CO<sub>2</sub></sub>
----------------	------------------------------------

Unit	tCO <sub>2</sub> e/t Charcoal
Description	Non-CO <sub>2</sub> emission factor arising from use of fuel wood in project scenario
Source of data	2006 IPCC Guidelines for National Greenhouse Gas Inventories, volume 2, chapter 2 (Table 2.5)
Value(s) applied	0.1476
Choice of data or Measurement methods and procedures	IPCC Default value for wood
Purpose of data	calculation of project scenario
Additional comment	If EF is in units of tCO <sub>2</sub> /t fuel, remove NCV term from emission calculations. Term can include a combination of emission factors from fuel production, transport, and use.

Data/parameter	$f_{NRB,i,y}$
Unit	fraction
Description	Non-renewability status of woody biomass fuel in scenario i during year y
Source of data	$f_{NRB}$ Report by C4 EcoSolutions
Value(s) applied	0.99
Choice of data or Measurement methods and procedures	Tool for Calculation of the fraction of non-renewable biomass (CDM Tool 30 EB 115 Annex 22 ver. 03.0)
Purpose of data	Calculation of baseline and project scenario
Additional comment	The $f_{NRB}$ value will remain fixed during the crediting period

Data/parameter	$P_{b,y}$
Unit	t/household/year
Description	Quantity of charcoal that is consumed in baseline

	scenario b during year y
Source of data	Baseline KPT analysis
Value(s) applied	1.028
Choice of data or Measurement methods and procedures	This value is based on baseline KPTs carried out in the project boundary. The baseline KPT has followed the procedures as outlined in the methodology in section 7 and Annex 4: Kitchen Performance Test found in the GS methodology TPDDTEC version 3.1 on page 57 <sup>11</sup> . For more details see section B.4. of the VPA-DD.
Purpose of data	Calculation of baseline scenario
Additional comment	The baseline will remain by-default fixed during the crediting period since the project activity targets non-industrial applications (see page 6 of the Gold Standard methodology: Technologies and Practices to Displace Decentralized Thermal Energy Consumption (TPDDTEC); Version 3.1.0)The baseline will remain by-default fixed during the crediting period since the project activity targets non- industrial applications (see page 8 of the Gold Standard methodology: Technologies and Practices to Displace Decentralized Thermal Energy Consumption (TPDDTEC); Version 3.1.0)

Data/parameter	Wood-to-charcoal conversion factor
Unit	kg firewood / kg charcoal
Description	Conversion factor for transforming fuel wood into charcoal
Source of data	IPCC default value <a href="https://www.ipcc-nggip.iges.or.jp/public/gl/guidelin/ch1ref3.pdf">https://www.ipcc-nggip.iges.or.jp/public/gl/guidelin/ch1ref3.pdf</a> (page 1.45)
Value(s) applied	6

<sup>11</sup> chrome-extension://efaidnbmnnnibpcajpcglclefindmkaj/https://globalgoals.goldstandard.org/standards/407\_V3.1\_EE\_ICS\_Technologies-and-Practices-to-Displace-Decentralized-Thermal-Energy-TPDDTECConsumption-.pdf

Choice of data or Measurement methods and procedures	The methodology TPDDTEC Ver.3.1 as per section 7. Performance Field Tests and Calculation of Emission Reductions, refers to use of IPCC, credible published literature, project-relevant measurement reports, or project-specific monitoring to get a wood-to-charcoal conversion ratio.
Purpose of data	Calculation of baseline and project scenario
Additional comment	Fixed ex-ante at VPA level

Data/parameter	$NCV_{LPG}$
Unit	TJ/ton
Description	
Source of data	IPCC default 2006, volume 2, chapter 1 (Table 1.2)
Value(s) applied	0.0473
Choice of data or Measurement methods and procedures	Default IPCC value for LPG is applied.
Purpose of data	calculation of project scenario
Additional comment	-

Data/parameter	$EF_{b,LPG,CO2}$
Unit	tCO <sub>2</sub> /TJ
Description	CO <sub>2</sub> emission factor arising from use of LPG in project scenario
Source of data	2006 IPCC Guidelines for National Greenhouse Gas Inventories, volume 2, chapter 2 (Table 2.5)
Value(s) applied	63.1

Choice of data or Measurement methods and procedures	Default IPCC value for LPG is applied.
Purpose of data	CO <sub>2</sub> emission calculation in project scenario
Additional comment	-

## D.2 Data and parameters monitored

>>

Data / Parameter	$N_{p,y}$
Unit	Number of project cookstove credited (units)
Description	Cookstoves in the project database for project scenario p through year y
Source of data	Distribution database
Value(s) applied	118,954
Measurement methods and procedures	<p>BURN keeps records of all distributed ICS in an electronic database. As a minimum the following information will be recorded through KoboCollect in the database:</p> <ul style="list-style-type: none"> <li>• Unique serial number (USN) of the ICS</li> <li>• Date of shipment to distributor/retailer</li> <li>• Name of distributor/retailer</li> <li>• Quantity of ICS distributed</li> <li>• Geographic area (state) of distributor/retailer</li> <li>• Model type of the ICS</li> </ul> <p>Besides, the distribution database will contain end-user contact details (name, state, mobile number, or national ID number) of at least 10 times the survey and field test sample size (including usage surveys for each age of product), to ensure an adequate end-user pool to which random sampling can be applied. To claim the ICS warranty, end-users must register their end-user details through SMS or call.</p>
Monitoring frequency	Continuously
QA/QC procedures	Transparent data analysis and reporting

Purpose of data	Estimation of CO <sub>2</sub> e emission reductions
Additional comment	The total distribution record is divided based on project scenario to create the project database.

Data / Parameter	$P_{p,y}$
Unit	t/household/year
Description	Quantity of fuel that is consumed in project scenario p during year y
Source of data	Project KPT
Value(s) applied	0.37
Measurement methods and procedures	<p>KPT measurements  <u>Digital Moisture Detector</u>- Wood moisture<sup>12</sup>                      Wood range- 4-75%                      Accuracy- <math>\pm 0.5\%</math>                      Calibration date: 23/05/2023                      Validity: 22/05/2024</p> <p><u>Weighing scale</u>- 50kgs Hook type with temperature<sup>13</sup>                      Calibration date: 22/05/2023                      Validity: 21/05/2024</p>
Monitoring frequency	Updated every two years
QA/QC procedures	Transparent data analysis and reporting
Purpose of data	Calculation of project emission reductions
Additional comment	A single project fuel consumption parameter is weighed to be representative of the quantity of project technologies of each age being credited in a given project scenario.

Data / Parameter	$U_{p,y}$
Unit	Percentage

<sup>12</sup> 30 Moisture detecting devices were used for the Kitchen performance tests

<sup>13</sup> 30 weighing scales were used in this Kitchen performance test

Description	Usage rate in project scenario p during year y
Source of data	Annual Usage Survey
Value(s) applied	87.11% (Weighted average usage rate)  Age Group 1-2 usage rate: 70.00%, Age Group 2-3 usage rate: 85.00%, Age Group 3-4 usage rate: 89.23%, Age Group 4-5 usage rate: 86.67%,
Measurement methods and procedures	The usage survey is carried out annually
Monitoring frequency	Annual
QA/QC procedures	Transparent data analysis and reporting
Purpose of data	To calculate the Usage rate in project scenario p during year y.
Additional comment	A single usage parameter is weighted to be representative of the quantity of project technologies of each age being credited in a given project scenario. The mandatory and Good Practice level as per the 'GS Requirements and Guidelines: Usage rate Monitoring' is being followed.

Data / Parameter	$LE_{p,y}$
Unit	tCO <sub>2</sub> e per year
Description	Leakage in project scenario p during year y
Source of data	Baseline and monitoring surveys
Value(s) applied	0
Measurement methods and procedures	-
Monitoring frequency	Every two years
QA/QC procedures	Transparent data analysis and reporting
Purpose of data	Used to calculate leakage emissions
Additional comment	Aggregate leakage can be assessed for multiple project scenarios, if appropriate

**SDG 1**

Data / Parameter	Monetary savings related to the purchase of charcoal
Unit	%
Description	Monetary savings related to the purchase of charcoal
Source of data	Usage/monitoring survey
Value(s) applied	45%
Measurement methods and procedures	Carrying out surveys to check on the money spent for purchasing charcoal in the project scenario compared to the baseline scenario.
Monitoring frequency	At least once every two years (biennial)
QA/QC procedures	-
Purpose of data	Reporting on SDG 1
Additional comment	This parameter is measured qualitatively, but not quantitatively.

### SDG 3

Data / Parameter	Perceived air quality
Unit	%
Description	Smoke levels, itchy eyes and breathing problems
Source of data	Usage/monitoring survey
Value(s) applied	100%
Measurement methods and procedures	Carrying out usage surveys to check on the pollution-related inconveniences (such as smoke levels, itchy eyes and breathing problems) in the project scenario
Monitoring frequency	At least once every two years (biennial)
QA/QC procedures	-
Purpose of data	Reporting on SDG 3
Additional comment	This parameter is measured qualitatively, but not

quantitatively.

## SDG 7

Data / Parameter	Number of sold/distributed ICS in use
Unit	Number of units in use
Description	Number of sold/distributed ICS in use
Source of data	Project database & supporting files
Value(s) applied	118,954 The usage rate is 87.11%
Measurement methods and procedures	Calculated: Total stoves Distributed * Weighted Average Usage rate
Monitoring frequency	Continuously
QA/QC procedures	-
Purpose of data	Reporting on SDG 7
Additional comment	This value is calculated by Multiplying the Total Number of stoves assumed to be distributed in the Project over the Crediting Period by the Usage rate per year

## SDG 8

Data / Parameter	Number of jobs created
Unit	Number
Description	Number of jobs created
Source of data	Project records like contracts, payment slips, employee list or others
Value(s) applied	125

Measurement methods and procedures	Direct measurement based on employment numbers of those employed directly by the project
Monitoring frequency	Annually
QA/QC procedures	Employee list can be cross-checked with contracts/payment slips or others
Purpose of data	Reporting on SDG 8
Additional comment	-

### D.3. Comparison of monitored parameters with last monitoring period

Data/Parameter	Value obtained in this monitoring period	Value obtained last monitoring period
$P_{b,y}$	1.028	1.028
$P_{p,y}$	0.37	0.410
$U_{p,y}$	87.11%	89.2%
$N_{p,y}$	118,954	91,868
$LE_{p,y}$	0	0
Perceived Air quality (SDG 3)	100%	96.60%
Equivalent monetary savings (SDG 1)	45%	35.49%
Total Jobs (SDG 8)	125	72
Number of people/households with access to energy efficient cook stoves and the usage rates of efficient cook stoves. (SDG 7)	118,954	120,802

### D.4. Implementation of sampling plan

>>

*Monitoring/Usage Surveys and Project KPTs*

Methodology Followed

Data collection for usage/monitoring survey was conducted from 24 February 2024 to 30 April 2024 and for KPT from 25 February 2024 to 17 April 2024. A team of 38 Enumerators were trained for the data collection by BURN team to ensure understanding of usage/monitoring requirements, Kitchen performance test and data collection procedures.

The leading team in Somalia consisting of team leaders and project managers, were trained by the Carbon Project Manager from BURN. This team thereafter trained a local team of 38 surveyors who were well versed with the local culture and language. The training was adequately tailored to usage surveys and Kitchen performance tests and included an interactive discussion of questions with surveyors, going through the questions of the usage survey questionnaire and KPTs (data collection form), role plays as well as interview techniques.

The usage Kitchen Performance Test households were visited on 4 consecutive days, avoiding worship days or any holiday. The first day was used to make introductions to the project and conduct in person interviews and observations, while the next 3 days were used for weighing all fuel types used on all cooking devices in the household during the duration of the visit. The charcoal, firewood, LPG, kerosene, and electricity consumption was measured over 3 days. The scales calibrated to ensure the highest level of accuracy in taking fuel measurements. The sample selection for the KPTs was randomly generated to eliminate potential bias in end-user profiles. The CME provided fuel to the households to eliminate the potential for biased consumption in the fuel measurement campaign.

#### Monitored Parameters related to SDG 13

1.  $U_{p,y}$  - Usage rate in project scenario p during year y
2.  $P_{p,y}$  - Project fuel consumption per household per year (t/hh/year)
3.  $N_{p,y}$  - Project technologies credited (units)
4.  $LE_{p,y}$  - Leakage in project scenario p during year y

#### Sampling frame

The sampling frame for the usage/monitoring survey, and KPTs consisted of households registered with end-user details (like location, phone number etc) in BURN's sales database.

#### Sampling Method

Simple random sampling approach was used. Registered households were randomly selected by using a random generator. With random numbers generated, the matching stoves were then selected from the database and their details were identified and contacted via telephone to make bookings for availability for physical visits.

### Sample Size

The total sample sizes for Usage Monitoring surveys were 225 surveys i.e. 165 for Usage Monitoring surveys, and 60 Project KPTs.

### In person Surveys

In person surveys were conducted for the purpose of the usage monitoring survey. Data was collected by trained enumerators who spoke the local language. All households visited had the following evidence:

- i. GPS coordinates
- ii. Photographs showing general kitchen area.

### Usage Rate Applied

In accordance with section 2 of the Gold Standard requirements and guidelines: Usage rate monitoring v2.0, PD has claimed Good Practice level of Usage rate as the claimable maximum usage rate. This is based on the CME complying with the Gold Standard requirements of Mandatory and Good Practice Level:

#### 1. Mandatory Requirements

##### 1.1 Define Use and Non-Use.

As per the registered VPA DD, Use is defined as Use of the project stove for minimum of 7 times in a week. In compliance with this, the PD has counted as users only households in the usage monitoring surveys who use the stove a minimum of 7 times in a week. This can be seen in Column DD of the Ex-Post ER calculation spreadsheet in tab labelled "KOBO Usage Survey Results". All usage survey respondents who use the Jikokoa/Jikokoa Xtra stove less than 7 times in a week are counted as non-users. A total of 7 households were therefore counted as non-users for not meeting this requirement.

PD also defines non-use based on "Last day of use" of the project ICS in that if the ICS was last used more than 7 days ago from the day of the usage survey visit, they are counted as non-users. This can be seen in column BH of the Ex-post ER calculations

spread sheet in tab labelled "KOBO Usage Survey Results". In this Monitoring period, 23 household were counted as non-users for failure to comply with this definition of a user.

## 1.2 In person Household Usage Survey

PD carried out in person usage surveys for all 165 households randomly selected for Usage monitoring survey to determine project technology use. The following activities were part of the in person household visits during this Monitoring campaign:

### 1.2.1 Kitchen Observation:

The enumerators visited each household and gathered key information to support the usage survey findings. The enumerator investigated signs of Use of the Project ICS by recording observations as to whether the ICS was warm to touch, whether there were ashes or embers on the ICS, and any other observations on signs of use. Since the interviewer was observing the signs of use of the ICS, there was no survey bias from the respondent answering questions in a way that they think the interviewer wants to hear, as is the risk with remote surveys. This can be seen in the questions on column AX of the *KOBO Usage Survey Results* tab where households were asked the following question and confirmed that there were observable signs of use:

*Does the JIKOKOA/JIKOKOA XTRA show any of the following signs of use? (Select all that apply)*

### 1.2.2. Interview with the Primary cook

The enumerators only interviewed Primary cooks of the household to gather information on the ICS use patterns, including information on duration and frequency of use, as well as information on multiple stove use and seasonal trends. This can be seen in the question on column I of the KOBO Usage Survey results tab where households were asked "Are you the primary cook for your household?". 100% of respondents interviewed for the usage monitoring survey campaign were Primary cooks in their households.

### 1.2.3 Photos of Cooking Areas

The enumerators took photographs of the project technology to gather visual data on the status of the project technology. These photos show the whole kitchen area including all stoves in use at the time of the survey in the household. These photos served as evidence that the households were indeed visited for the

Usage monitoring survey. All households gave consent to have photo of their kitchen areas to be taken.

#### 1.2.4 GPS coordinates

All households visited had GPS coordinated to provide further evidence that the Household was visited. Evidence of this can be found in column Y and Z in the tab "*KOBO Usage Survey Results*" of the Ex-Post ER calculations Excel File.

### 1.3 Verification of Accuracy of results

At the conclusion of the data collection, the project developer randomly called 6% of the surveyed households to verify that the homes were visited by the enumerators and the recorded responses were correct. A total of 10 randomly selected households were taken through this verification process. All responses from the verification audits were captured via audio recordings of the phone calls with the households. All households taken through this confirmed to have been visited for the in-person usage survey and the responses provided during the usage surveys was confirmed to be correct during this verification exercise.

Based on the information provided from 1.1 to 1.3 above PD has met the requirements of the Mandatory usage requirements.

### 2.0 Good Practice Monitoring requirements

BURN is claiming up to a maximum 90% usage rate following the below monitoring requirements, in addition to the mandatory requirements described above.

#### 2.1 Field team training and supervision

BURN provided training and supervision to field enumerators to ensure field teams were equipped with the capacity needed to carry out successful usage monitoring surveys. The purpose of the training was to ensure that each enumerator collected complete and accurate information. Both Male and female enumerators were selected as enumerators. The training workshops were conducted immediately before the commencement of the field work. A Training workshop was conducted on 22<sup>nd</sup> February 2024 where 5 Call center agents who would be booking appointments with households for the Usage monitoring and KPT visits. Another training was held on 03<sup>th</sup>, 11<sup>th</sup> and 24<sup>th</sup> February 2024 where 38 people were trained for in person usage surveys (3 supervisors, and 35 enumerators). The essence of Usage Monitoring survey was communicated to enumerators to ensure data collection, data management, field trouble shooting protocols were well understood. Field teams were supervised by BURN

staff to ensure accuracy of process is maintained throughout the data collection process.

Daily supervision was conducted in the following ways:

**i. WhatsApp Group:** The purpose of the WhatsApp group was to ensure that all questions coming in from the field were addressed in real time as they were happening,

**ii. Direct Observation:** The Project Manager ensured to accompany surveyors in the first days of the data collection exercise to ensure that correct procedures were being followed as per training given to the teams.

**iii. Data Review:** The survey data was reviewed daily in team meetings with the project manager, and the field team supervisors. The surveys were created in such a way that as soon as the enumerator finished his/her survey, they would sync the data and it would immediately be received in the BURN database. In that way, the data analysis report could be generated daily, and errors flagged. The Project manager and team leaders would then call enumerators to seek clarifications and provide additional guidance where a clear lack of understanding of survey questionnaire or survey protocols were addressed.

## 2.2 End User Training and Follow Up Visits

BURN Manufacturing provides end-user training on the Jikokoa stove use through organized demonstrations and in some cases, home follow-up visits. The purpose is to ensure sensitization of end users towards correct and sustained use of the project stove.

### i. End User Follow Up:

In a bid to encourage ensure correct and sustained use of the project stove, BURN engages its sales agents to conduct post-purchase visits with a random sample of households who purchase the Jikokoa stoves. The in-person visits provide a useful interface through which BURN can provide personalized messaging on stove use and to understand any concerns that end users might have on stove-use, repairs, or warranty information.

During this Monitoring period, BURN conducted household visits to some of the end users to check on the use of stove and retrain the proper use to the stove where needed.



Figure D.4.1: Photographs showing BURN staff during End user follow up visit

ii. Warranty Booklet

Warranty booklets are distributed with the Stove to show how to use the Jikoko stove properly.



Figure D.4.2: Photo showing Scan copy of warranty booklet stove manual demonstrating proper use of a Jikoko

2.3 Awareness Campaign

In this Monitoring period, BURN has carried out awareness campaigns to make sure end users of the Jikoko stoves are educated on the continuous use of the ICS and the key

benefits of the stove. These campaigns are multi-faceted and are carried out during sales promotion as well as continuously during the monitoring period e.g., during end user household training visits. A record of all awareness campaigns held has been provided as a support document.

Within the monitoring period, BURN rolled out its awareness campaigns through the following mediums:

### 1. Market Activations

Market activations are organized as a combined promotional activity as well as an opportunity to demonstrate the use of the stoves to potential end users as well as an opportunity to show case the benefits of the use of the Jikokoa in comparison to traditional stoves. These market activations are particularly useful medium because they are conducted in the local language and allow for an interface where trained sales agents can communicate stove use in an interactive setting.



Figure D.4.3: Photographs of Market Activations in this Monitoring period

### 2. Billboards and Posters

To further amplify end user awareness, BURN engages different mass media communication channels to communicate stove use and benefits. Within this monitoring period, BURN employed posters, billboards, to advertise the Jikokoa.

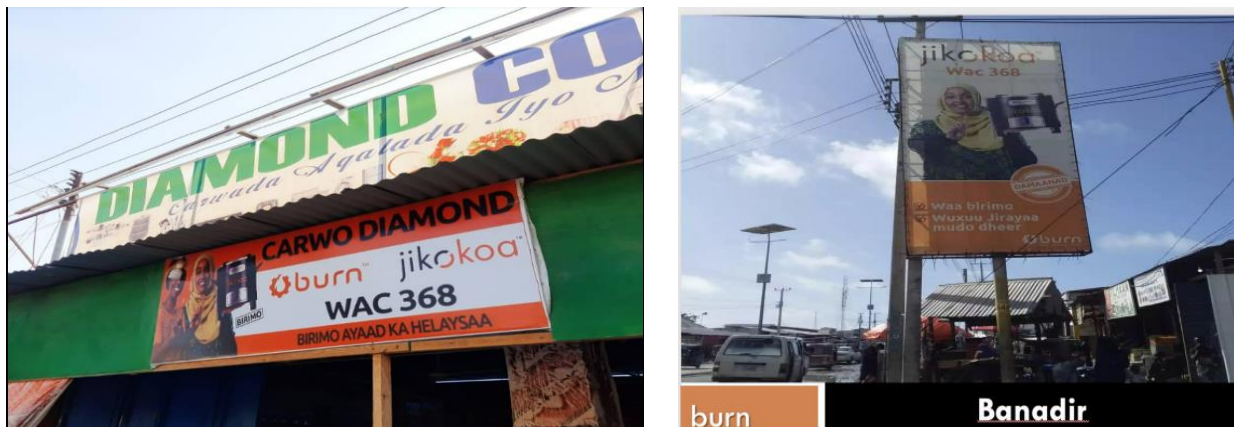


Figure D.4.4: Photographs of Billboards in this Monitoring period

The efficacy of these end user awareness mechanisms is evident from the usage survey results, column “IJ” of the “Kobo Usage Survey Results” where 100% of respondents confirmed they felt they were adequately informed on the benefits of the Jikokoa stove as well as how to use the stove.

### 3. Media Advertisements

To further amplify end user awareness, BURN engages different mass media communication channels to communicate stove use and benefits. Within this monitoring period, BURN has employed the use of social media advertisements.

The use of social media promotion (Facebook & YouTube) represents an evolution in the communication channels used to reach out to a wider audience of potential end users in Somalia. The messaging here retains the traditional focus on stove use, access and benefits but also allows for a visual medium that provides real time end user testimonials.

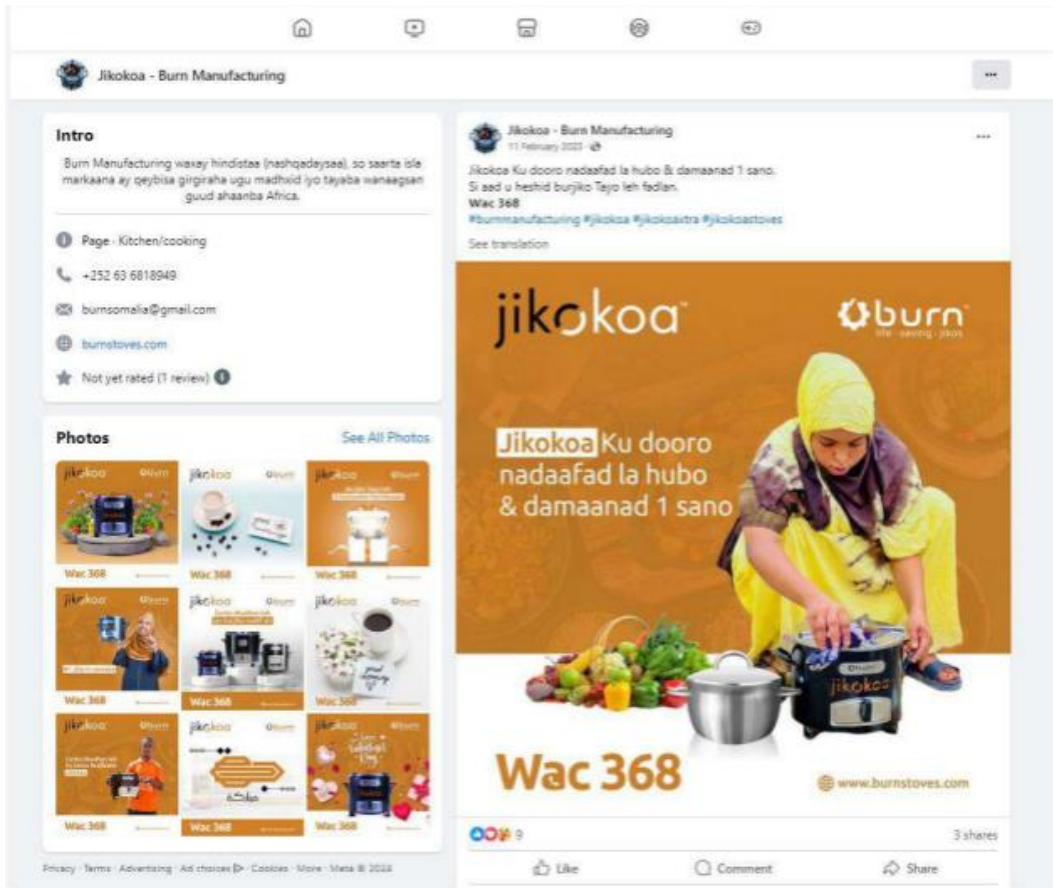


Figure D.4.5: Photographs of Social Media Advertisements in this Monitoring period

4. Leaflet accompanying the stove.

To ensure that the end-user has a written record on stove use, a leaflet is provided in both English and Somali with full instructions on stove use, warranty activation, carbon ownership and BURN contact information.



### ISTICMAALKA KHAANADA DAMBASKA

**KOR U QAADIS** Yara fur khaanada dembaska

**HOOS U DHIGID** Xidh khaanada dembaska

Dhinaqyada khaanada dambaska wuxu tiimaayaa sida saxda ah ee mamuulka dabka

**X** Ha isticmalin hadii u aad u so wada baxsan yahay khaanada girgiraha

**X** Ha ku karin bila khaanada dembaska

### HOW TO REGISTER YOUR WARRANTY

- Waxa aad ka weyda **Nambarka Tazaniha (Serial Number)** dhabarka girgiraha/burjigada. Waxa aad farirta oo dirta nambarka ihi.
  - BURN 214754241
  - Burni 123456789 ka dibin in aad Nambarka dheriyada BURN iyo Nambarka tazaniha ah (Serial Number)
  - 123456789 ha loolan kalmada Burn
- Waxa aad ku so jawaabta Raagaga oo dhamaay tiran.
  - Ku 368 Farayga Call Center
  - Waxa aad helaysa Farri kale
- Waxa aad farirta ugu so jawaabta magpada aad ku noobahay.
  - Ku 368 Hargaysa
  - Waxa aad so qorta magpada oo keliya. Wax kale ha so raacin.
  - Ku 368 Farayga Call Center

**Hambalyo!** Waxaad dhamaaystiray is diiwangelinti waanaad heshay damaanada. Hadaad u baahatid caawimo ku saabsan girgiraha/burjigada farin bilaash ah noo soo dir: I CAAWI 368 ama naga soo wax 368.

**BALLANQAADKAYAGA:** BURN Manufacturing USA (BURN) waxay ku ballanqaadaysa in ay biiniso girgiraha/burjigada ugu tayada Fican adunka. Girgiraha/Burjigada Jikokoo waa raandhig, dhunaha ayu madhooyas si sahlan ah ba lagu karin kara. Marka aad isticmaala Jikokoo hadii aad ku qanci weydo muddo 14 cisho gudahood waxa aad la soo xidhiha qaybta daryeelka macamiisha si lagu celiyo lacagta. Wa in aad la timada caddayn mujinayasa wakhtigii iyo goobti aad ka ibastay (boono) si lagu xaqiijo.

**MUDDADA DAMAANADA:** Girgiraha/Burjigada wuxuu leeyahay damaanad 1 sanno jikokoo ah iyo 2 sanno Jikokoo Xtra ah ka bilaadmayaa marka aad isticmaala. Hoosta waxa ku xusan xaaladaha aad ku heli karto damaanada iyo kuwa aanaad ku heli karin.

**IS DIIWANGELINTA DAMAANADA:** Marka aad isticmaala 7 cisho gudahood waxa in aad isku diiwangeliso oo farin aad so dirta. Qaabka is diiwangelintu waka kor ku xusan.

**WIXI DAMAANADA HOOS IMANAAY:** Burn waxay ka madax banaan tahay oilladaha qalabka iyo shaqada ee isticmaalka caadiga ah ee qoyxka. Burn waxay qeexaysaa isticmaalka caadiga ah ee qoyxka sida cuntada karinta wax aan ka badnayn 3 wakhti maalin kasta oo aan ka badnayn 8-10 qaybba wax kasta oo wax lagu karsado. Haddii Burn go'aamiyo, iyada oo ujeedadiisu tahay, in wax ciid ah aan lahayn qalabka iyo shaqada, Burn, iyada oo kali ah, waa inay dayacirto ama bedeshaa girgiraha.

**WIXI DAMAANADA KA BAXSAN:** Lama damaanad qaadayo oodobadan oo socda:

- Waxa laga yaaba in u ku imado girgiraha/burjigada in u midabku is badeho daxlaha ku imadao. Tassi cillad maha kumana jirto damaanada.
- In u dheehu ka dhaco ama u midabku is badeho.
- Wixi dhawac oo qadha sababo la xidhiha dajasad ama in si qaldan loo isticmaalo.
- Dhawac kaga imid dibada oo aan loo baahay karin shirkadda.
- Dhawac ku imid qof aan loo ogolaan oo wax ka badal ama diid u habayn ku sameeya.
- Dhawac ku imi marka lo dhigo caadeeda ama u roob ku da'ao.
- Dhawac ku imid girgiraha/burjigada oo ganacsi loo isticmaalay. Ganacsi waxa looga jeeda in lagu isticmaalo girgiraha/burjigada huteelada iwm.

**DAMMAANADA KOR KU XUSAN WAA MID U GOONI AH , OO LAKULMAAYO DAMAANAD KALE, QORAAL AMA HADAL, MUUJIN AMA QEEQID.** Ma jiraan wax damaanad ah oo ka baxsan sharaacda halkan. Wakhtiga, kuwa wax libiya ama shaqada Burn looma ogola inay wax ka beddelaan damaanadan ama inay sameeyaan wax damaanad ah oo dheeraad ah oo ku xiran Burn. Sida waafaqan warbixinta shahiyadaadkaas, ha ahaato hadal ama qoraal ah, ha noqdaan damaanad iyo in aan lagu tirisanayn. Wayaabaahas waxaa taageeraya dhicba kaarboonka ee loo marayo isticmaalka. Sidaa darteed aado ibsanayaa badeecadan, waxaad ogolaatay inaad ka tanaasushto xaqiigada dhicba kaarboonka ee Burn. Farin waxaad ku soo dirta kalmada I Caawi nambarka 368 ama la so hadal 368 hadii aad la kulanto wax dhicba ah in aad isticmaalaysid girgiraha/burjigada.

Figure D.4.6: Photographs of Product Leaflet accompanying the Stove in this Monitoring period

The efficacy of these end user awareness mechanisms is evident from the usage survey results, column “IL” of the “Kobo Usage Survey Results” as is summarized below:

<b>How did you learn about how to use the JIKOKOA/JIKOKOA XTRA?</b>	<b>Usage Survey Count of Respondents by End User Awareness Mechanism</b>
<b>booqosho guri (Household visit)</b>	<b>15</b>
<b>Hage cuntakarineed meel banana lagu qabtay (Cooking demonstration)</b>	<b>2</b>
<b>kuwa kale ( fadlan qeex) (Other (specify))</b>	<b>NA</b>
<b>saxaafadda(Media (like radio, TV, newspaper)</b>	<b>32</b>
<b>waraaq xayaysiiseed(Leaflet)</b>	<b>52</b>
<b>warbixin goobta lagu iibsho(Info_at_point-of-sale)</b>	<b>53</b>
<b>warbixin iibiye/gade (Info by salesperson)</b>	<b>8</b>
<b>xayaysiis (Sales promotion)</b>	<b>2</b>

Results

Usage survey

<b>Type of survey</b>	<b>Period of survey</b>	<b>Actual number of samples conducted</b>	<b>Achieved precision</b>
Usage/monitoring survey	24/02/2024 to 30/04/2024	165	N/A

**Usage Survey Results:**

<u>Age Cohort</u>	<u>Sample Size</u>	<u>Achieved Usage Rate</u>	<u>Usage Rate Applied – “Good Practice”</u>
Entire Sample	142	87.11% <sup>14</sup>	87.11%
Age Group – 1-2	7	70.00%	70.00%
Age Group – 2-3	51	85.00%	85.00%
Age Group – 3-4	58	89.23%	89.23%
Age Group – 4-5	26	86.67%	86.67%

The Usage Monitoring survey results further corroborate the efficacy of the end-use awareness mechanisms with 100% of the respondents reporting that they felt they were sufficiently informed on how to use the project stove, while 100% reported that they felt they were sufficiently informed on the benefits of the project stove.

Kitchen Performance Test

Type of survey	Period of survey	Actual number of samples conducted	Achieved precision
Kitchen Performance Test	25/02/2024 to 17/04/2024	60	12%

The Kitchen Performance Test was designed to capture the entire quantum of fuels used by households. Using the Gold Standard TPDDTEC Multifuel KPT result analyzer template, all fuel consumption readings were assessed with the following results:

Fuel Type	Metric Applied	Result	Unit
<b>Charcoal</b>	Mean value	0.372	ton/hh/year
<b>Firewood</b>	Mean value	0.00	ton/hh/year
<b>LPG</b>	Mean value	0.00	ton/hh/year
<b>Kerosene</b>	Mean value	0.00	ton/hh/year

<sup>14</sup> Weighted average of the achieved usage rates from both stove cohorts, weighted by sample sizes.

Where a precision level attained was higher than 30%, the upper bound values were applied to be conservative. Following the multi fuel analyzer template, outliers in fuel consumption were identified using the calculated upper and lower bound values. As such, outliers were identified automatically as values that lies outside most of the other values in set of data.

Sequentially, outlier identification follows the below steps:

- Calculate the 1st and 3rd quartiles.
- Calculates the interquartile range.
- Calculate the upper and lower bound of our data range.
- Using the upper and lower bounds to identify the outlying data points.

This approach is evident in the Project Multi Fuel KPT sheet in the “Outlier Identification” in columns D through H.

## SECTION E. CALCULATION OF SDG IMPACTS

### E.1. Calculation of baseline value or estimation of baseline situation of each SDG Impact

>>

SDG 13:

The transparent ex-ante calculations of the outcomes of SDG 13 (i.e., CO<sub>2</sub>e reductions) are provided in a separate excel spreadsheet uploaded to GS registry for the performance certification review.

The methodology directly provides the following equation for emission reductions, without separate baseline, project or leakage emission reduction equations.

$$ER_y = \sum_{b,p} (N_{p,y} * U_{p,y} * P_{p,b,y} * NCV_{b,fuel} * (f_{NRB,b,y} * EF_{fuel,CO2} + EF_{fuel,nonCO2})) - \sum LE_{p,y}$$

Equation (1)

Emission reductions achieved in this Monitoring period:

#### Stoves Distributed in 2019:

ER <sub>y</sub>	87,757	Emission reduction in the Monitoring period(tCO <sub>2</sub> e/year)
N <sub>p,y</sub>	13,631	Cumulative number of project technology-days included in the project database for project scenario p against baseline scenario b in year y
U <sub>p,y</sub>	87.11%	Cumulative usage rate for technologies in project scenario p, in year y, based on cumulative adoption rate and drop off rate revealed by usage surveys (fraction)
P <sub>p,b,y</sub>	0.66	Specific fuel savings for an individual technology of project p against an individual technology of baseline b in year y, in tons/year, as derived from the statistical analysis of the data collected from the field tests
f <sub>NRB,b,y</sub>	0.99	Fraction of biomass used in year y for baseline scenario b that can be established as non-renewable biomass
EF <sub>fuel,CO2</sub>	1.7472	CO <sub>2</sub> emission factor of the fuel that is reduced. (IPCC default for wood fuel, 1.7472 tCO <sub>2</sub> e/t Charcoal)
EF <sub>fuel,nonCO2</sub>	0.1476	Non-CO <sub>2</sub> emission factor of the fuel that is reduced

$LE_{p,y}$	0.00	Leakage for project scenario p, in year y (tCO <sub>2</sub> e/yr)
------------	------	---

**Stoves Distributed in 2020:**

$ER_y$	494,243	Emission reduction in the Monitoring period(tCO <sub>2</sub> e/year)
$N_{p,y}$	76,767	Cumulative number of project technology-days included in the project database for project scenario p against baseline scenario b in year y
$U_{p,y}$	87.11%	Cumulative usage rate for technologies in project scenario p, in year y, based on cumulative adoption rate and drop off rate revealed by usage surveys (fraction)
$P_{p,b,y}$	0.66	Specific fuel savings for an individual technology of project p against an individual technology of baseline b in year y, in tons/year, as derived from the statistical analysis of the data collected from the field tests
$f_{NRB,b,y}$	0.99	Fraction of biomass used in year y for baseline scenario b that can be established as non-renewable biomass
$EF_{fuel,CO2}$	1.7472	CO <sub>2</sub> emission factor of the fuel that is reduced. (IPCC default for wood fuel, 1.7472 tCO <sub>2</sub> e/t Charcoal)
$EF_{fuel,nonCO2}$	0.1476	Non-CO <sub>2</sub> emission factor of the fuel that is reduced
$LE_{p,y}$	0.00	Leakage for project scenario p, in year y (tCO <sub>2</sub> e/yr)

**Stoves Distributed in 2021:**

$ER_y$	407,484	Emission reduction in the Monitoring period(tCO <sub>2</sub> e/year)
$N_{p,y}$	63,291	Cumulative number of project technology-days included in the project database for project scenario p against baseline scenario b in year y
$U_{p,y}$	87.11%	Cumulative usage rate for technologies in project scenario p, in year y, based on cumulative adoption rate and drop off rate revealed by usage surveys (fraction)
$P_{p,b,y}$	0.66	Specific fuel savings for an individual technology of project p against an individual technology of baseline b in year y, in tons/year, as derived from the statistical analysis of the data collected from the field tests
$f_{NRB,b,y}$	0.99	Fraction of biomass used in year y for baseline scenario b that can be established as non-renewable biomass
$EF_{fuel,CO2}$	1.7472	CO <sub>2</sub> emission factor of the fuel that is reduced. (IPCC default for wood fuel, 1.7472 tCO <sub>2</sub> e/t Charcoal)

$EF_{fuel,nonCO2}$	0.1476	Non-CO <sub>2</sub> emission factor of the fuel that is reduced
$LE_{p,y}$	0.00	Leakage for project scenario p, in year y (tCO <sub>2</sub> e/yr)

**Stoves Distributed in 2022:**

$ER_y$	50,281	Emission reduction in the Monitoring period(tCO <sub>2</sub> e/year)
$N_{p,y}$	7,810	Cumulative number of project technology-days included in the project database for project scenario p against baseline scenario b in year y
$U_{p,y}$	87.11%	Cumulative usage rate for technologies in project scenario p, in year y, based on cumulative adoption rate and drop off rate revealed by usage surveys (fraction)
$P_{p,b,y}$	0.66	Specific fuel savings for an individual technology of project p against an individual technology of baseline b in year y, in tons/year, as derived from the statistical analysis of the data collected from the field tests
$f_{NRB,b,y}$	0.99	Fraction of biomass used in year y for baseline scenario b that can be established as non-renewable biomass
$EF_{fuel,CO2}$	1.7472	CO <sub>2</sub> emission factor of the fuel that is reduced. (IPCC default for wood fuel, 1.7472 tCO <sub>2</sub> e/t Charcoal)
$EF_{fuel,nonCO2}$	0.1476	Non-CO <sub>2</sub> emission factor of the fuel that is reduced
$LE_{p,y}$	0.00	Leakage for project scenario p, in year y (tCO <sub>2</sub> e/yr)

SDG 1

In the baseline scenario, it is estimated that households have 0% charcoal fuel expenditure savings. The savings are only envisioned as a result of the implementation of the project activity with Improved cookstoves.

SDG 3

In the baseline scenario, it is estimated that 100% of the households suffer pollution-related inconveniences (such as smoke levels, itchy eyes and breathing problems). Improved air quality is a result of the implementation of the project activity.

SDG 7

In the baseline scenario, it is estimated that no improved cookstoves are implemented, hence the baseline value is zero. The distribution of improved cookstoves is a result of the implementation of the carbon project activity.

SDG 8

In the baseline scenario, it is estimated that no jobs are being generated. Job creation is a result of the implementation of the carbon project activity.

**E.2. Calculation of project value or estimation of project situation of each SDG Impact**

>>

SDG 13:

The transparent ex-post calculations of the outcomes of SDG 13 (i.e. CO<sub>2</sub>e reductions) are provided in a separate excel spreadsheet uploaded to GS registry for the performance certification review.

The methodology directly provides the following equation for emission reductions; without separate baseline, project or leakage emission reduction equations.

$$ER_y = \sum_{b,p} (N_{p,y} * U_{p,y} * P_{p,b,y} * NCV_{b, fuel} * (f_{NRB,b,y} * EF_{fuel, CO2} + EF_{fuel, nonCO2})) - \sum LE_{p,y}$$

Emission reductions achieved in this Monitoring period:

**Stoves Distributed in 2019:**

ER <sub>y</sub>	87,757	Emission reduction in the Monitoring period(tCO <sub>2</sub> e/year)
N <sub>p,y</sub>	13,631	Cumulative number of project technology-days included in the project database for project scenario p against baseline scenario b in year y
U <sub>p,y</sub>	87.11%	Cumulative usage rate for technologies in project scenario p, in year y, based on cumulative adoption rate and drop off rate revealed by usage surveys (fraction)
P <sub>p,b,y</sub>	0.66	Specific fuel savings for an individual technology of project p against an individual technology of baseline b in year

		y, in tons/year, as derived from the statistical analysis of the data collected from the field tests
$f_{NRB,b,y}$	0.99	Fraction of biomass used in year y for baseline scenario b that can be established as non-renewable biomass
$NCV_{b,fuel}$	0.0156	Net calorific value of the fuel that is substituted or reduced. (IPCC default for wood fuel, 0.0156 TJ/ton)
$EF_{fuel,CO_2}$	1.7472	CO <sub>2</sub> emission factor of the fuel that is reduced. (IPCC default for wood fuel, 1.7472 tCO <sub>2</sub> e/t Charcoal)
$EF_{fuel,nonCO_2}$	0.1476	Non-CO <sub>2</sub> emission factor of the fuel that is reduced
$LE_{p,y}$	0.00	Leakage for project scenario p, in year y (tCO <sub>2</sub> e/yr)

**Stoves Distributed in 2020:**

$ER_y$	494,243	Emission reduction in the Monitoring period(tCO <sub>2</sub> e/year)
$N_{p,y}$	76,767	Cumulative number of project technology-days included in the project database for project scenario p against baseline scenario b in year y
$U_{p,y}$	87.11%	Cumulative usage rate for technologies in project scenario p, in year y, based on cumulative adoption rate and drop off rate revealed by usage surveys (fraction)
$P_{p,b,y}$	0.66	Specific fuel savings for an individual technology of project p against an individual technology of baseline b in year y, in tons/year, as derived from the statistical analysis of the data collected from the field tests
$f_{NRB,b,y}$	0.99	Fraction of biomass used in year y for baseline scenario b that can be established as non-renewable biomass
$NCV_{b,fuel}$	0.0156	Net calorific value of the fuel that is substituted or reduced. (IPCC default for wood fuel, 0.0156 TJ/ton)
$EF_{fuel,CO_2}$	1.7472	CO <sub>2</sub> emission factor of the fuel that is reduced. (IPCC default for wood fuel, 1.7472 tCO <sub>2</sub> e/t Charcoal)
$EF_{fuel,nonCO_2}$	0.1476	Non-CO <sub>2</sub> emission factor of the fuel that is reduced
$LE_{p,y}$	0.00	Leakage for project scenario p, in year y (tCO <sub>2</sub> e/yr)

**Stoves Distributed in 2021:**

$ER_y$	407,484	Emission reduction in the Monitoring period(tCO <sub>2</sub> e/year)
--------	---------	--

Np,y	63,291	Cumulative number of project technology-days included in the project database for project scenario p against baseline scenario b in year y
Up,y	87.11%	Cumulative usage rate for technologies in project scenario p, in year y, based on cumulative adoption rate and drop off rate revealed by usage surveys (fraction)
Pp,b,y	0.66	Specific fuel savings for an individual technology of project p against an individual technology of baseline b in year y, in tons/year, as derived from the statistical analysis of the data collected from the field tests
f NRB,b, y	0.99	Fraction of biomass used in year y for baseline scenario b that can be established as non-renewable biomass
NCVb,fuel	0.0156	Net calorific value of the fuel that is substituted or reduced. (IPCC default for wood fuel, 0.0156 TJ/ton)
EFfuel,CO2	1.7472	CO2 emission factor of the fuel that is reduced. (IPCC default for wood fuel, 1.7472 tCO2e/t Charcoal)
EFfuel,nonCO2	0.1476	Non-CO2 emission factor of the fuel that is reduced
LEp,y	0.00	Leakage for project scenario p, in year y (tCO2e/yr)

**Stoves Distributed in 2022:**

ERy	50,281	Emission reduction in the Monitoring period(tCO2e/year)
Np,y	7,810	Cumulative number of project technology-days included in the project database for project scenario p against baseline scenario b in year y
Up,y	87.11%	Cumulative usage rate for technologies in project scenario p, in year y, based on cumulative adoption rate and drop off rate revealed by usage surveys (fraction)
Pp,b,y	0.66	Specific fuel savings for an individual technology of project p against an individual technology of baseline b in year y, in tons/year, as derived from the statistical analysis of the data collected from the field tests
f NRB,b, y	0.99	Fraction of biomass used in year y for baseline scenario b that can be established as non-renewable biomass
NCVb,fuel	0.0156	Net calorific value of the fuel that is substituted or reduced. (IPCC default for wood fuel, 0.0156 TJ/ton)
EFfuel,CO2	1.7472	CO2 emission factor of the fuel that is reduced. (IPCC default for wood fuel, 1.7472 tCO2e/t Charcoal)
EFfuel,nonCO2	0.1476	Non-CO2 emission factor of the fuel that is reduced
LEp,y	0.00	Leakage for project scenario p, in year y (tCO2e/yr)

Results from this monitoring period shows that in MPIV, the project has achieved 1,039,765 tCO<sub>2</sub>e emission reductions.

#### SDG 1

The monitoring of SDG 1 has been made through a qualitative evaluation of a sample of households during the usage/monitoring survey (either site visits or telephone surveys) to check on the money spent for purchasing charcoal in the project scenario compared to the baseline scenario. Results from this monitoring period show that on average the monetary savings are 45% related to the purchase of charcoal in the project scenario.

#### SDG 3

The monitoring of SDG 3 has been made through a qualitative evaluation of a sample of households during the usage/monitoring survey to check on the pollution-related inconveniences (such as smoke levels, itchy eyes and breathing problems) in the project scenario compared to the baseline scenario. Results from this monitoring period show that 100% of respondents perceive air quality improvements at their homes since purchasing and cooking with the project stove as compared to the baseline.

#### SDG 7

The parameter 'project technologies in use' has been calculated as part of the outcome calculation for SDG 13 and is provided in the separate ER calculation excel spreadsheet. The eligible project technology days are multiplied with the usage rate ( $U_{p,y}$ ) to determine the 'project technologies in use'. In this monitoring period, the project technologies in use have been calculated as 118,954.

#### SDG 8

The number of created jobs has been determined for the respective years of the monitoring period. Both Casual and Contract employees have been considered for this parameter. An employee list has been provided as a supporting document employees have been employed in the project in MPIV.

### **E.3. Calculation of leakage**

>>

The value applied for Leakage is 0 tCO<sub>2</sub> (Source: Leakage survey in MPIV). Leakage surveys were conducted in a sample of 164 households. A Leakage survey was conducted on these households and the results of this was provided in the ER calculations sheet. The duration of the Leakage survey was from 24 February 2024 to 30 April 2024.

**E.4. Calculation of net benefits or direct calculation for each SDG Impact**

SDG	SDG Impact	Baseline estimate	Project estimate	Net benefit
SDG 13	Climate Action	1,628,905	589,140	1,039,765 (rounded down value)
SDG 1	End poverty in all its forms everywhere	0%	45%	45%
SDG 3	Ensure healthy lives and promote well-being for all at all ages	0%	100.00%	100.00%
SDG 7	Ensure universal access to affordable, reliable, sustainable and modern energy services	0	118,954	118,954
SDG 8	Promote sustained, inclusive and sustainable economic growth, full and productive employment and decent work for all	0	125	125

**E.5. Comparison of actual SDG Impacts with estimates in approved PDD**

SDG	Values estimated in ex ante calculation of approved PDD for this monitoring period	Actual values <sup>15</sup> achieved during this monitoring period
SDG 1: End poverty in all its forms everywhere	62%	45%
SDG 3: Ensure healthy lives and promote well-being for all at all ages	80%	100%
SDG 7: Ensure universal access to affordable, reliable, sustainable and modern energy services	244,438	118,594
SDG 8: Promote sustained, inclusive and sustainable economic growth, full and productive employment and decent work for all	25	125
SDG 13: Climate actions	1,752,206	1,039,765

E.5.1. Explanation of calculation of value estimated ex ante calculation of approved PDD for this monitoring period

>>

The actual emission reductions achieved in this monitoring period are less than the ex-ante estimations (see SDG 13). This is because the actual number of stoves distributed are less than the estimated value.

<sup>15</sup> Whenever emission reductions are capped, both the original and capped values used for calculations must be transparently reported. Use brackets to denote original values.

SDG 1: From the monitoring surveys, less financial savings per household have been reported by households than what was estimated in the Ex-Ante determination in the approved PDD. This is because the usage monitoring surveys are based on real case situations as reported by households as opposed to estimations and assumptions made in the ex-ante scenario.

SDG 3: From the monitoring surveys, 100 percentage of households reported improvement in health as a result of reduced smoke on the Jikokoa while cooking as compared to the baseline scenario. This is because the usage monitoring surveys are based on real case situations as reported by households as opposed to estimations and assumptions made in the ex-ante scenario.

SDG 8: In this monitoring period, more jobs were created than what was anticipated in the ex-ante scenario.

SDG 7: In this monitoring period, less stoves were found to be in use than what was estimated in the Ex-Ante scenario. SDG 7 is a function of Number of distributed stoves in the Monitoring period and the Usage rate. Both parameters were assumed to be lower in the ex-ante than in the ex-post scenario and this led to the SDG 7 number during MP4 being less than what was anticipated in the ex-ante case.

#### **E.6. Remarks on increase in achieved SDG Impacts from estimated value in approved PDD**

>>

SDG 8 was greater than what was mentioned in the VPA DD because more job opportunities were created during this MP as compared to the annual estimate in the VPA DD. As a result of having more people employed in the setting up and implementing of the project, the number of staff who were trained in the MP was also more than what was estimated in the Ex-Ante.

SDG 3 has been based on actual data collection representing feedback from households on their perceived benefits from the project (Which points to end users gaining benefits from the project than was initially anticipated in the project design phase).

## SECTION F. SAFEGUARDS REPORTING

>> Since, No Safeguarding principles were identified during the Validation of the project which could potentially affect the project activity and require any mitigation measures, therefore no monitoring or reporting is required for the Safeguards.

## SECTION G. STAKEHOLDER INPUTS AND LEGAL DISPUTES

**G.1. List all Inputs and Grievances which have been received via the Continuous Input and Grievance Mechanism together with their respective responses/mitigations.**

>>

Four grievances related to stove repairs have been reported during the current monitoring period. The BURN team has addressed these grievances by repairing the stoves.

**G.2 Report on any stakeholder mitigations that were agreed to be monitored.**

>>

Not applicable

**G.3 Provide details of any legal contest that has arisen with the project during the monitoring period**

>>

No legal contests have arisen with the project during the monitoring period.

## Revision History

Version	Date	Remarks
1.1	14 October 2020	<p>Hyperlinked section summary to enable quick access to key sections</p> <p>Improved clarity on Key Project Information</p> <p>Section for POA monitoring</p> <p>Forward action request section</p> <p>Improved Clarity on SDG contribution/SDG Impact term used throughout</p> <p>Clarity on safeguard reporting</p> <p>Clarity on design changes</p> <p>Leakage section added for VER/CER projects</p> <p>Addition of Comparison of monitored parameters with last monitoring period</p> <p>Provision of an <a href="#">accompanying Guide</a> to help the user understand detailed rules and requirements</p>
1.0	10 July 2017	Initial adoption