

VCU MONITORING REPORT (VCU-MR)
Inner Mongolia Ximeng Zheligentu Wind Farm Phase I Project

CONTENTS

- A. General description of the project activity
 - A.1. Brief description of the project activity
 - A.2. Project participants
 - A.3. Location of the project activity
 - A.4. Technical description of the project
 - A.5. Title, reference and version of the baseline and monitoring methodology applied to the project activity
 - A.6. Registration date of the project activity
 - A.7. Crediting period of the project activity and related information
 - A.8. Name of responsible person(s)/entity(ies)

- B. Implementation of the project activity
 - B.1. Implementation status of the project activity
 - B.2. Revision of the monitoring plan
 - B.3. Request for deviation applied to this monitoring period
 - B.4. Notification or request of approval of changes

- C. Description of the monitoring system

- D. Data and parameters monitored
 - D.1. Data and parameters used to calculate baseline emissions
 - D.2. Data and parameters used to calculate project emissions
 - D.3. Data and parameters used to calculate leakage emissions
 - D.4. Other relevant data and parameters

- E. Emission reductions calculation
 - E.1. Baseline emissions calculation
 - E.2. Project emissions calculation
 - E.3. Leakage calculation
 - E.4. Emission reductions calculation
 - E.5. Comparison of actual emission reductions with estimates in the registered CDM-PDD
 - E.6. Remarks on difference from estimated value

- F. Clarification on clauses 1.12, 1.13, 1.14, 8.1 and 8.2 in the VCS PD template
 - F.1. Demonstration to confirm that the project was not implemented to create GHG emissions primarily for the purpose of its subsequent removal or destruction
 - F.2. Demonstration that the project has not created another form of environmental credit (for example renewable energy certificates)
 - F.3. Project rejected under other GHG programs (if applicable)
 - F.4. Proof of Title
 - F.5. Projects that reduce GHG emissions from activities that participate in an emissions trading program (if applicable)

VCU MONITORING REPORT

Version 02 on 30/06/2011

Inner Mongolia Ximeng Zheligentu Wind Farm Phase I Project

CDM registration reference number: 2566

VCUs monitoring period 01 from 01/05/2009 to 05/05/2010 (first and last days included)

SECTION A. General description of the project activity

A.1. Brief description of the project activity: >>

>>

Inner Mongolia Ximeng Zheligentu Wind Farm Phase I Project (hereafter referred as the Project) is located in Zhengxiangbai Qi, south Xilinguole League, Inner Mongolia Autonomous Region, People's Republic of China. The objective of the Project is to utilize wind resources for electricity generation. The Project involves the installation of 39 wind turbines with unit capacity of 1250 kW, and totals up an installation capacity of 48.75MW. The selected model is SEC-1250. The electricity supplied by the Project is sold to West Inner Mongolia Power Grid, which is an integral part of the North China Power Grid. The Project helps reduce GHG emissions generated from the high-growth, coal-dominated power generation.

The first wind turbine of the Project has been put into operation on 30/04/2009. And all the 39 wind turbines have been put into operation on 02/07/2009. The expected technical lifetime of the Project is 21years as stated in the registered CDM PDD.

During this VCUs monitoring period from 01/05/2009-05/05/2010, the total emission reduction achieved is 103,878 tCO₂e.

A.2. Project Participants

>>

Name of Party involved	Private and/or public entity(ies) project participants	Kindly indicate if the Party involved wishes to be considered as project participant (Yes/No)
People's Republic of China (host)	Beijing International New Energy Co., Ltd.	No
UK	OneCarbon International B.V.	No

A.3. Location of the project activity:

>>

The Project is located in Zhengxiangbai Qi, south Xilinguole League, Inner Mongolia Autonomous Region, People's Republic of China. The geographical coordinates of the project are east longitude of 115°29'34" and north latitude of 42°28'15".

A.4. Technical description of the project

>>

The Project involves the installation of 39 wind turbines with unit capacity of 1250 kW, and total up an installation capacity of 48.75MW. The selected wind turbines are produced by Shanghai Electric Wind Power Equipment Co., Ltd..

A.5. Title, reference and version of the baseline and monitoring methodology applied to the project activity:

>>

The approved methodology applied in the Project activity is ACM0002 (version 07) – “Consolidated methodology for grid-connected electricity generation from renewable sources”.

The approved methodology “Tool for the Demonstration and Assessment of Additionality” (version 05.2) is also applied in the Project.

For more information regarding the methodologies please refer to <http://cdm.unfccc.int/methodologies/PAmethodologies/approved.html>

A.6. Registration date of the project activity:

>>

The Project was registered as CDM project on 06/05/2010.

A.7. Crediting period of the project activity and related information (start date and choice of VCUs crediting period):

>>

The VCUs crediting period of the Project is from 01/05/2009 – 05/05/2010.

A.8. Name of responsible person(s)/entity(ies):

>>

Name of person/entity completing the monitoring report:

Ms. Lin, Wei / Mr. Guan, Yisong

Easy Carbon Consultancy Co., Ltd.

13-801, Jianwai SOHO, 39 Dongsanhuan Zhonglu, Chaoyang District, Beijing 100022, P. R. China

Phone/fax: +86 10 58697044/59000064

Email: tonilin@easy-carbon.com / gyisong@easy-carbon.com

Easy Carbon Consultancy Co., Ltd is not Project Participant.

SECTION B. Implementation of the project activity

B.1. Implementation status of the project activity

>>

The first wind turbine of the Project has been put into operation on 30/04/2009. And all the 39 wind turbines have been put into operation on 02/07/2009. There was no significant malfunction or any emergency reported for the Project during this VCUs monitoring period from 01/05/2009 to 05/05/2010.

B.2. Revision of the monitoring plan

>>

The revision of the monitoring plan for the current VCUs monitoring period has been submitted to EB and approved by EB on 27/06/2011.

B.3. Request for deviation applied to this VCUs monitoring period

>>

There is no deviation request for the current VCUs monitoring period.

B.4. Notification or request of approval of changes

>>

There is no request of approval of changes from the project activity as described in the registered CDM-PDD.

SECTION C. Description of the monitoring system

>>

The monitoring system is specified as below:

1. Monitoring procedures

The Project shares the transformer and gateway meters (the main meter M1 and backup meter M2) with another wind farm project (hereafter refer to *Project B*). Monitoring equipments include two bidirectional meters and six auxiliary meters. Both M1 (main meter) and M2 (backup meter) are equipped at the project site. The project owner and the Grid Company are responsible for conducting the monitoring.

M1 was used to monitor the electricity exports to and imports from the grid by the Project and *Project B* as well as M2. The metering has been continuously measured and mostly recorded. Both meters have an accuracy of 0.2s. They have been calibrated annually to ensure normal performance.

The 39 sets of wind turbines were divided into 3 groups, and each group is connected with a 35kV transmission line and installed with a meter at the low voltage side of 35kV/220kV transformer. These meters (A-1, A-2, A-3) are installed as auxiliary meters to calculate the electricity supplied to the grid by Group A-i (i=1,2,3) of the Project activity. Similarly, three meters (B-1, B-2, B-3) are installed as auxiliary meters to calculate the electricity supplied to the grid by Group B-i (i=1,2,3) of the *Project B*.

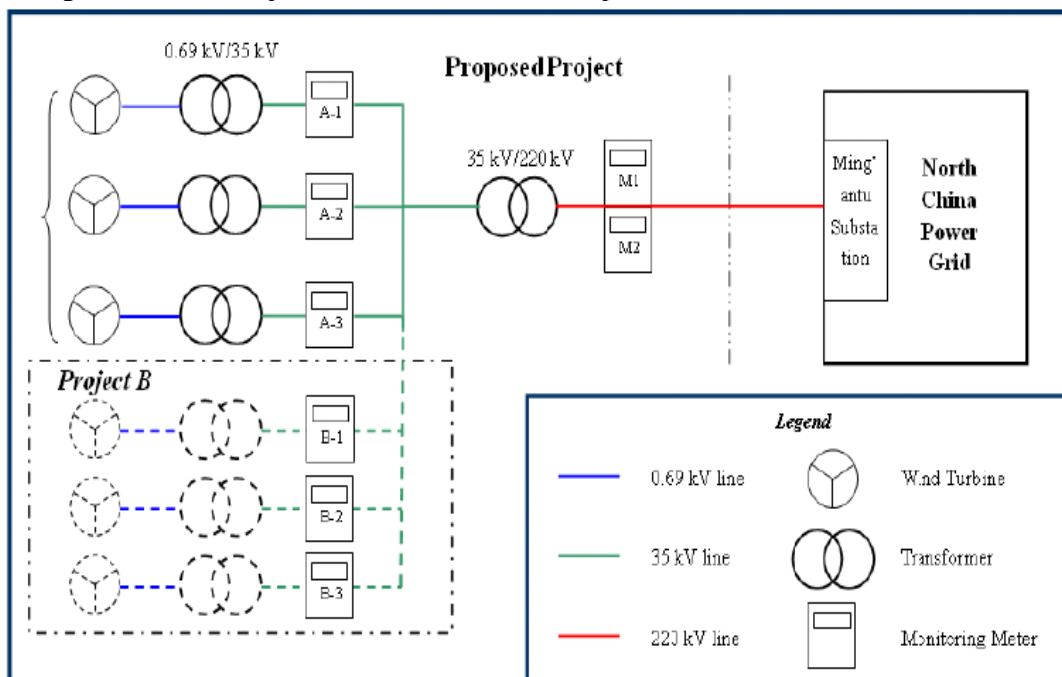
In order to deal with the jointly-reading problem, the project owner and the grid company set up the procedure and calculation method to determine the net electricity supplied to the grid by the Project, which is calculated as follows:

$$EG_y = \frac{\sum_{i=1,2,3} EG_{A-i,y}}{\sum_{i=1,2,3} EG_{A-i,y} + \sum_{i=1,2,3} EG_{B-i,y}} \times EG_{export,y} - EG_{import,y} \quad (1)$$

Where:

- EG_y = Net electricity supplied to the grid by the Project in the year y.
- $EG_{export,y}$ = Total electricity supplied to the grid by the Project and *Project B* in the year y.
- $EG_{import,y}$ = Total electricity purchased from the grid by the Project and *Project B* in the year y.
- $EG_{A-i,y}$ = Electricity supplied to the grid by Group A-i (i=1,2,3) of the Project in year y.
- $EG_{B-i,y}$ = Electricity supplied to the grid by Group B-i (i=1,2,3) of the *Project B* in year y.

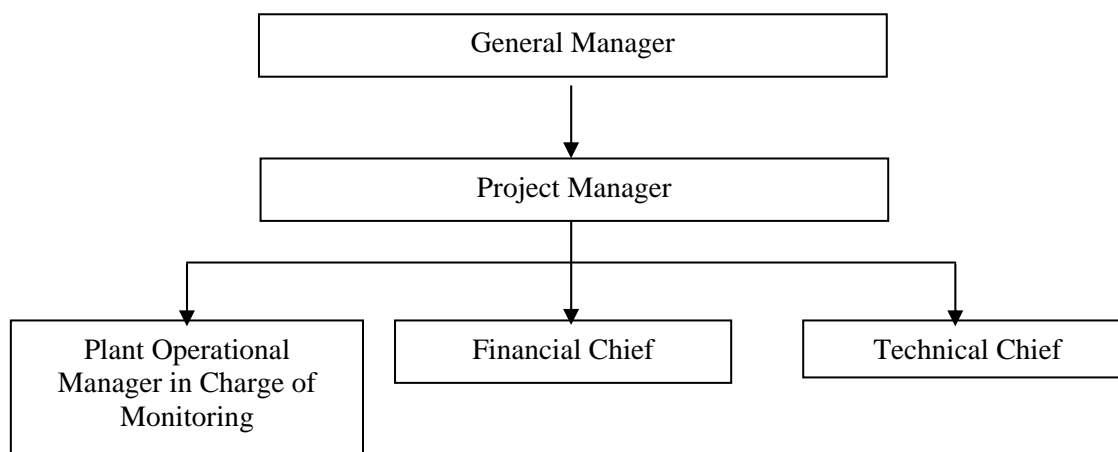
A diagram shows how parameters are monitored is presented as follows:



2. Monitoring structure and responsibility of personnel

Beijing International New Energy Co., Ltd., the project owner, used this document as guideline in monitoring of the project emission reduction performance and adhered to the guidelines set out in this monitoring plan.

Operational manager of wind farm collected the information and data required by the Monitoring Plan. The collected information was documented and sent to the project manager and responsible staffs of the Beijing International New Energy Co., Ltd. monthly. The project manager was in charge of the implementation of the Monitoring Plan and reported to the General Manager of the company. The General Manager of the company would make the confirmations on monitoring, calculation data and reports.



3. Emergency procedures for the monitoring system

The accuracy of the electricity meters (both the main meter and the backup meter) installed at the substation (interconnection facility connecting the facility to the grid) was 0.2s. The meters have been properly calibrated following relevant provision in applicable national standard and its revisions, and taking manufacturer specification into consideration. Calibration was carried out by the competent entity with the records being provided to the project owner.

SECTION D. Data and parameters

D.1. Data and parameters determined at registration and not monitored during the VCUs monitoring period, including default values and factors

Data / Parameter:	$EF_{grid,CM,y}$
Data unit:	tCO ₂ /MWh
Description:	Baseline emission factor of the grid.
Source of data used:	Registered CDM PDD
Value(s) :	1.0549
Indicate what the data are used for (Baseline/ Project/ Leakage emission calculations)	Baseline emission calculation.
Additional comment:	The baselines emission factor was determined ex-ante and fixed during the first crediting period.

D.2. Data and parameters monitored

Data / Parameter:	$EG_{export,y}$
Data unit:	MWh
Description:	Total electricity supplied to the grid by the proposed project and <i>Project B</i> during year <i>y</i>
Measured /Calculated	Measured

/Default:																																									
Source of data:	Bidirectional electricity meter reading of M1 installed at the project site																																								
Value(s) of monitored parameter:	138561.45																																								
Indicate what the data are used for (Baseline/ Project/ Leakage emission calculations)	Baseline emission calculation																																								
Monitoring equipment (type, accuracy class, serial number, calibration frequency, date of last calibration, validity)	<p>The main meter and the backup meter were calibrated by Inner Mongolia Electricity Science Research Institute Electricity Measurement and Testing Center annually according to Chinese national calibration standards. Information of the meters is listed in the blow table.</p> <table border="1"> <thead> <tr> <th></th> <th colspan="2">Main meter M1</th> <th colspan="2">Backup meter M2</th> </tr> </thead> <tbody> <tr> <td>Meter Type</td> <td colspan="2">ZMQ202C</td> <td colspan="2">ZMQ202C</td> </tr> <tr> <td>Accuracy class</td> <td colspan="2">0.2s</td> <td colspan="2">0.2s</td> </tr> <tr> <td>Serial No.</td> <td colspan="2">95232476</td> <td colspan="2">95232477</td> </tr> <tr> <td>Calibration frequency</td> <td colspan="2">Yearly</td> <td colspan="2">Yearly</td> </tr> <tr> <td>Certificate report No.</td> <td>Neng 13, No. 2009-L0075</td> <td>Zheligentu Jianzi, No. 2009-02</td> <td>Neng 13, No. 2009-L0076</td> <td>Zheligentu Jianzi, No. 2009-02</td> </tr> <tr> <td>Date of last calibration</td> <td>17/04/2009</td> <td>16/06/2009</td> <td>17/04/2009</td> <td>16/06/2009</td> </tr> <tr> <td>Validity</td> <td>16/04/2010</td> <td>15/06/2010</td> <td>16/04/2010</td> <td>15/06/2010</td> </tr> </tbody> </table>		Main meter M1		Backup meter M2		Meter Type	ZMQ202C		ZMQ202C		Accuracy class	0.2s		0.2s		Serial No.	95232476		95232477		Calibration frequency	Yearly		Yearly		Certificate report No.	Neng 13, No. 2009-L0075	Zheligentu Jianzi, No. 2009-02	Neng 13, No. 2009-L0076	Zheligentu Jianzi, No. 2009-02	Date of last calibration	17/04/2009	16/06/2009	17/04/2009	16/06/2009	Validity	16/04/2010	15/06/2010	16/04/2010	15/06/2010
	Main meter M1		Backup meter M2																																						
Meter Type	ZMQ202C		ZMQ202C																																						
Accuracy class	0.2s		0.2s																																						
Serial No.	95232476		95232477																																						
Calibration frequency	Yearly		Yearly																																						
Certificate report No.	Neng 13, No. 2009-L0075	Zheligentu Jianzi, No. 2009-02	Neng 13, No. 2009-L0076	Zheligentu Jianzi, No. 2009-02																																					
Date of last calibration	17/04/2009	16/06/2009	17/04/2009	16/06/2009																																					
Validity	16/04/2010	15/06/2010	16/04/2010	15/06/2010																																					
Measuring/ Reading/ Recording frequency:	Continuously measurement and monthly recording																																								
Calculation method (if applicable):	Not applicable																																								
QA/QC procedures applied:	The electricity supplied by the project activity to the grid will be monitored and recorded at the central control room. The project operator is responsible for recording such data Double check by receipt of sales.																																								

Data / Parameter:	$EG_{import,y}$						
Data unit:	MWh						
Description:	Total electricity purchased from the grid by the proposed project and <i>project B</i> during year <i>y</i>						
Measured /Calculated /Default:	Measured						
Source of data:	Electricity meter reading of M1 installed at the project site						
Value(s) of monitored parameter:	878.23						
Indicate what the data are used for (Baseline/ Project/ Leakage emission calculations)	Baseline emission calculation						
Monitoring equipment (type, accuracy class, serial number, calibration frequency, date of last calibration, validity)	<p>The main meter and the backup meter are calibrated by Inner Mongolia Electricity Science Research Institute Electricity Measurement and Testing Center annually according to Chinese national calibration standards. Information of the meters is listed in the blow table.</p> <table border="1"> <thead> <tr> <th></th> <th>Main meter M1</th> <th>Backup meter M2</th> </tr> </thead> <tbody> <tr> <td>Meter Type</td> <td>ZMQ202C</td> <td>ZMQ202C</td> </tr> </tbody> </table>		Main meter M1	Backup meter M2	Meter Type	ZMQ202C	ZMQ202C
	Main meter M1	Backup meter M2					
Meter Type	ZMQ202C	ZMQ202C					

	Accuracy class	0.2s		0.2s	
	Serial No.	95232476		95232477	
	Calibration frequency	Yearly		Yearly	
	Certificate report No.	Neng 13, No. 2009-L0075	Zheligentu Jianzi, No. 2009-02	Neng 13, No. 2009-L0076	Zheligentu Jianzi, No. 2009-02
	Date of last calibration	17/04/2009	16/06/2009	17/04/2009	16/06/2009
	Validity	16/04/2010	15/06/2010	16/04/2010	15/06/2010
Measuring/ Reading/ Recording frequency:	Continuously measurement and monthly recording				
Calculation method (if applicable):	Not applicable				
QA/QC procedures applied:	The electricity purchased from the grid will be monitored and recorded at the central control room. The project operator is responsible for recording such data. Double check by receipt of sales.				

Data / Parameter:	EG _{A-i,y}				
Data unit:	MWh/yr				
Description:	Quantity of electricity supplied to the grid by Group A-i (i=1,2,3) of the Project in year y.				
Measured /Calculated /Default:	Measured				
Source of data:	Readings of electricity meters (A-1, A-2, and A-3 described in B7.2) installed at the 35kV transmission line of the Project site.				
Value(s) of monitored parameter:	99683.50				
Indicate what the data are used for (Baseline/ Project/ Leakage emission calculations)	Baseline emission calculation				
Monitoring equipment (type, accuracy class, serial number, calibration frequency, date of last calibration, validity)	The meters are calibrated by Inner Mongolia Electricity Science Research Institute Electricity Measurement and Testing Center annually according to Chinese national calibration standards. Information of the meters is listed in the blow table.				
		Meter A-1	Meter A-2	Meter A-3	
	Meter Type	DSSD331	DSSD331	DSSD331	
	Accuracy class	0.5s	0.5s	0.5s	
	Serial No.	9030094	9030093	9030096	
	Calibration frequency	Yearly	Yearly	Yearly	
	Certificate report No.	Zheligentu Jianzi, No.2009-03			
	Date of calibration	17/04/2009			
	Validity	16/04/2010			
	Certificate report No.	Zheligentu Jianzi, No.2010-05			
	Date of last calibration	16/04/2010			
	Validity	15/04/2011			
	Measuring/ Reading/	Monthly recording			

Recording frequency:	
Calculation method (if applicable):	The sum of readings of electricity meters (A-1, A-2, and A-3 described in B7.2) installed at the 35kV transmission line of the Project site.
QA/QC procedures applied:	The metering equipments at the substation will be calibrated once a year according to the management standard.

Data / Parameter:	$EG_{B-i,y}$																																														
Data unit:	MWh/yr																																														
Description:	Quantity of electricity supplied to the grid by Group B-i (i=1,2,3) of the <i>project B</i> in year <i>y</i> .																																														
Measured /Calculated /Default:	Measured																																														
Source of data:	Readings of electricity meters (B-1, B-2, and B-3 described in B7.2) installed at the 35kV transmission line of the <i>project B</i> site.																																														
Value(s) of monitored parameter:	40005.00																																														
Indicate what the data are used for (Baseline/ Project/ Leakage emission calculations)	Baseline emission calculation																																														
Monitoring equipment (type, accuracy class, serial number, calibration frequency, date of last calibration, validity)	<p>The meters are calibrated by Inner Mongolia Electricity Science Research Institute Electricity Measurement and Testing Center annually according to Chinese national calibration standards. Information of the meters is listed in the blow table.</p> <table border="1"> <thead> <tr> <th></th> <th>Meter B-1</th> <th>Meter B-2</th> <th>Meter B-3</th> </tr> </thead> <tbody> <tr> <td>Meter Type</td> <td>DSSD331</td> <td>DSSD331</td> <td>DSSD331</td> </tr> <tr> <td>Accuracy class</td> <td>0.5s</td> <td>0.5s</td> <td>0.5s</td> </tr> <tr> <td>Serial No.</td> <td>9030087</td> <td>0010037</td> <td>0010038</td> </tr> <tr> <td>Calibration frequency</td> <td>Yearly</td> <td>Yearly</td> <td>Yearly</td> </tr> <tr> <td>Certificate report No.</td> <td colspan="3">Zheligentu Jianzi, No.2009-03</td> </tr> <tr> <td>Date of calibration</td> <td colspan="3">17/04/2009</td> </tr> <tr> <td>Validity</td> <td colspan="3">16/04/2010</td> </tr> <tr> <td>Certificate report No.</td> <td colspan="3">Zheligentu Jianzi, No.2010-05</td> </tr> <tr> <td>Date of last calibration</td> <td colspan="3">16/04/2010</td> </tr> <tr> <td>Validity</td> <td colspan="3">15/04/2011</td> </tr> </tbody> </table>				Meter B-1	Meter B-2	Meter B-3	Meter Type	DSSD331	DSSD331	DSSD331	Accuracy class	0.5s	0.5s	0.5s	Serial No.	9030087	0010037	0010038	Calibration frequency	Yearly	Yearly	Yearly	Certificate report No.	Zheligentu Jianzi, No.2009-03			Date of calibration	17/04/2009			Validity	16/04/2010			Certificate report No.	Zheligentu Jianzi, No.2010-05			Date of last calibration	16/04/2010			Validity	15/04/2011		
	Meter B-1	Meter B-2	Meter B-3																																												
Meter Type	DSSD331	DSSD331	DSSD331																																												
Accuracy class	0.5s	0.5s	0.5s																																												
Serial No.	9030087	0010037	0010038																																												
Calibration frequency	Yearly	Yearly	Yearly																																												
Certificate report No.	Zheligentu Jianzi, No.2009-03																																														
Date of calibration	17/04/2009																																														
Validity	16/04/2010																																														
Certificate report No.	Zheligentu Jianzi, No.2010-05																																														
Date of last calibration	16/04/2010																																														
Validity	15/04/2011																																														
Measuring/ Reading/ Recording frequency:	Monthly recording																																														
Calculation method (if applicable):	The sum of readings of electricity meters (B-1, B-2, and B-3 described in B7.2) installed at the 35kV transmission line of the <i>project B</i> site.																																														
QA/QC procedures applied:	The metering equipments at the substation will be calibrated once a year according to the management standard.																																														

Data / Parameter:	EG_y
Data unit:	MWh
Description:	Net electricity supplied to the Grid by the Project during year <i>y</i>
Measured /Calculated /Default:	Calculated
Source of data:	Calculation by $EG_{export,y}$, $EG_{import,y}$, $EG_{A-i,y}$ and $EG_{B-i,y}$ according to the equation (1) in section B.7.2 of the revised monitoring plan.
Value(s) of monitored	98472.17

parameter:	
Indicate what the data are used for (Baseline/ Project/ Leakage emission calculations)	Baseline emission calculation
Monitoring equipment (type, accuracy class, serial number, calibration frequency, date of last calibration, validity)	Not applicable
Measuring/ Reading/ Recording frequency:	Monthly recording
Calculation method (if applicable):	The net electricity supplied to the Grid by the Project has been calculated through $EG_{\text{export},y}$, $EG_{\text{import},y}$, $EG_{A-i,y}$ and $EG_{B-i,y}$ according to the equation (1) in section B.7.2 of the revised monitoring plan.
QA/QC procedures applied:	Power supplied to the grid will be checked by internal verification procedure and electricity sales receipts.

SECTION E. Emission reductions calculation

E.1. Baseline emissions calculation

>>

The baseline emission BE_y (tCO₂e) during the VCU's monitoring period results from:

$$BE_y = EG_y * EF_y$$

Where

EG_y -Net electricity supplied to the grid during the VCU's monitoring period (MWh);

EF_y -Emission factor of the grid (tCO₂/MWh) (1.0549 tCO₂/MWh as calculated ex-ante in the registered CDM PDD page 26 and fixed during the first crediting period according to the methodology of ACM0002 version 07).

Net electricity supplied to the grid

Period	$EG_{A-i,y}$ (MWh)	$EG_{B-i,y}$ (MWh)	$EG_{\text{export},y}$ (MWh)	$EG_{\text{import},y}$ (MWh)
01/05/2009-31/05/2009	4002.25	0.00	5448.61	30.63
01/06/2009-30/06/2009	6438.25	0.00	6481.38	44.20
01/07/2009-31/07/2009	4299.75	0.00	4237.82	61.55
01/08/2009-31/08/2009	5017.25	0.00	4967.20	70.95
01/09/2009-30/09/2009	8587.25	0.00	8462.40	66.43
01/10/2009-31/10/2009	10736.25	0.00	10548.57	42.82
01/11/2009-30/11/2009	9889.25	0.00	9664.31	43.99
01/12/2009-31/12/2009	9296.00	1496.25	10401.40	60.11
01/01/2010-31/01/2010	10335.50	6664.00	16517.11	169.45
01/02/2010-28/02/2010	4483.50	4168.50	8377.44	151.03
01/03/2010-31/03/2010	10412.50	11306.75	21324.28	88.63
01/04/2010-30/04/2010	13856.50	13811.00	27282.28	39.68
01/05/2010-05/05/2010	2329.25	2558.50	4848.65	8.76
Total	99683.50	40005.00	138561.45	878.23

EG _y (MWh)	98472.17
-----------------------	----------

$$BE_y = EG_y * EF_y = 98472.17 \text{ MWh} * 1.0549 \text{ tCO}_2/\text{MWh} = 103,878 \text{ tCO}_2\text{e.}$$

E.2. Project emissions calculation

>>

According to ACM0002 (Version 07), no project emissions were to be counted by the Project.

Hence, $PE_y = 0$

E.3. Leakage calculation

>>

According to ACM0002 (Version 07), the main indirect emissions potentially giving rise to leakage in the context of electric sector projects result from power plant construction, fuel handling (mining, processing, and transportation) and land inundation (for hydroelectric projects). The project developer did not need to consider such indirect emissions when applying the methodology. Project activities using this baseline methodology would not claim any credit for the project on account of reducing these emissions below the level of the baseline scenario. The leakage from the project is zero.

$L_y = 0$

E.4. Emission reductions calculation / table

>>

Total baseline emissions: $BE_y = 103,878 \text{ tCO}_2\text{e.}$

Total project emissions: $PE_y = 0$

Total leakage: $L_y = 0$

Total emission reductions: $ER_y = BE_y - PE_y - L_y = BE_y - 0 - 0 = 103,878 \text{ tCO}_2\text{e.}$

Emission reductions in the VCU's monitoring period (01/05/2009–05/05/2010): 103,878 tCO₂e.

E.5. Comparison of actual emission reductions with estimates in the CDM-PDD

>>

The estimated annual emission reductions are 104,941 tCO₂e in the registered CDM PDD. For this VCU's monitoring period (01/05/2009–05/05/2010), it covered 370 days. The estimated value should be: $104,941/365 * 370 = 106,379 \text{ tCO}_2\text{e.}$

Item	Values applied in ex-ante calculation of the registered CDM-PDD	Actual values reached during the VCU's monitoring period
Emission reductions (tCO ₂ e)	106,379	103,878

E.6. Remarks on difference from estimated value in the CDM PDD

>>

The emission reductions in the VCU's monitoring period from 01/05/2009–05/05/2010 were 2.35% less than the estimated quantity in the registered CDM PDD. Since the first wind turbine of the Project has been put into operation on 30/04/2009 and all the 39 wind turbines have been put into operation till 02/07/2009, the electricity generation is less than the designed value in the FSR. It is reasonable the actual emission reductions value during the VCU's monitoring period is 2.35% less than the estimated value in the registered CDM PDD and it will not increase the estimates of emission reductions in the future VCU's monitoring period.

SECTION F. Clarification on clauses 1.12, 1.13, 1.14, 8.1 and 8.2 in the VCS PD template

>>

F.1. Demonstration to confirm that the project was not implemented to create GHG emissions primarily for the purpose of its subsequent removal or destruction

>>

The Project is newly constructed grid-connected project to utilize wind resources for electricity generation for substitution the on-grid coal-fired power in the North China Power Grid, as the existing coal-fired power plants dominate the North China Power Grid. The Project achieved GHG emission reduction by avoiding CO₂ emissions. As renewable energy, wind power generates no emission prior to subsequent destruction.

F.2. Demonstration that the project has not created another form of environmental credit (for example renewable energy certificates)

>>

The Project has registered as CDM project activity at EB on 06/05/2010. As the wind farm has been in operation since 30/04/2009, the project entity only requests VCUs generated by the project from 01/05/2009-05/05/2010. The Project is a wind farm project and project participants promise that no any other environmental credit has been or will be requested except CDM and VCS credits.

F.3. Project rejected under other GHG programs (if applicable)

>>

The Project has been registered as CDM project. The Project achieved GHG emission reductions by avoiding CO₂ emissions. Therefore, it is not applicable that project is rejected under other GHG programs.

F.4. Proof of Title

>>

Letter of Approval for Inner Mongolia Ximeng Zheligentu Wind Farm Phase I Project is the proof that the Project developed as a Clean Development Mechanism Project by National Development and Reform Commission of the People's Republic of China.

The project owner, Beijing International New Energy Co., Ltd., possesses the ownership of the project, including the plants, equipments and the process, therefore possesses the VCUs generated from the project. The ownership of the VCUs will be transferred to the Buyer.

F.5. Projects that reduce GHG emissions from activities that participate in an emissions trading program (if applicable)

Not applicable. The VCUs generated from the project that is not included in an emission trading program; or does not take place in a jurisdiction or sector in which binding limits are established on GHG emissions.

