



Sustainable Development Verified Impact Standard

THE KASIGAU CORRIDOR REDD+ PROJECT PHASE II – THE COMMUNITY RANCHES

Document Prepared by Wildlife Works Carbon LLC



Photo: Darren Centofanti

The Kasigau REDD+ Project– The Community Ranches is located in Southeastern Kenya; in the Coast Province about 2 hours' drive from the port town of Mombasa along the Nairobi-Mombasa highway. The Project's Eco-Region is typified by a dryland forest ecosystem, dominated by acacia and commiphora drought-resistant species. The majority of people in the area descend from the Taita tribe, with significant populations of Duruma, Kamba and other less-prevalent tribes.

Wildlife Works' Kasigau REDD+ Project is split into two Phases, Phase I – Rukinga Sanctuary and Phase II – The Community Ranches. While both projects are registered individually as unique projects under the VCS & CCB Standards of the Verra Program, they are effectively managed as a single project on the ground and at the administrative level.

This Project Description Document (PD) covers Phase II of the project and addresses the forest conservation of 13 blocks of land owned by Indigenous Community Ownership Groups. Each one of the thirteen blocks being owned by different legal entities formed years ago by the Communities and the Government of Kenya to hold legal title to the land.

The 13 blocks of land covered under this Phase II of the Kasigau Corridor REDD Project total 169,741 hectares and are;

- Taita Ranch, which is 35,612 ha known as LR 12264 owned by Taita Ranching Company Ltd a collection of indigenous local shareholders.
- Mgeno Ranch which is 21,232 ha known as LR 12178 and owned by Mgeno Ranching (DA) Company Ltd., a collection of indigenous local shareholders.
- Maungu Ranch which is 21,619 ha known as LR 12179, and owned by Maungu Ranching (DA) Company Ltd. a collection of indigenous local shareholders.
- Kasigau Ranch which is 21,186 ha known as LR 12180, and owned by Kasigau Ranching (DA) Company Ltd., a collection of indigenous local shareholders.
- Wangala Ranch which is 2,023.5 ha known as LR 12262 and owned by Livingstone and Alphonse Ikonge, local indigenous shareholders.
- Kambanga Ranch which is 12,948 ha known as FR 195/6 and owned by Kasigau Ranching (DA) Company Ltd., a collection of indigenous local shareholders.
- Dawida Ranch which is 4,046.86 ha known as LR 14208 and owned by Dawida Ranching Group Company Ltd., a collection of indigenous local shareholders.
- Washumbu Ranch which is 14,501 ha known as LR 14206 and owned by Washumbu (DA) Ranching Company Ltd., a collection of indigenous local shareholders.
- Amaka Ranch which is 5,998 ha known as LR 14207 and owned by Amaka Development Limited., a collection of indigenous local shareholders
- Sagalla Ranch which is 17,402 ha known as LR 12177 and owned by Sagalla Ranchers Limited, a collection of indigenous local shareholders.
- Ndara Ranch which is 1,834.77 ha known as LR 12176 and owned by Eliud Timothy Mwamunga, a local indigenous stakeholder.
- Choke Ranch which is 5,076 ha known as LR 12199/3 and owned by Raymond Joel Mwangola a local indigenous shareholder.
- Kutima Ranch which is 5076 ha known as LR 12199/4 and owned by Kutima Investments Limited, a collection of indigenous local shareholders.

These Group ranches are part of that land that forms a corridor (the Kasigau Wildlife Corridor) between the Tsavo East National Park and the Tsavo West National Parks to the South East of the Taita Hills, and area of high conservation value and the northern most extent of the Eastern Arc Mountain range. Lands within the Project boundary are classified as tropical dryland forest¹ for at least 20 years and has been primary forest throughout recorded history².

The objective of the project is to protect in perpetuity the dryland forests that make up the project area and that form a wildlife dispersal and migration corridor between Tsavo East and Tsavo West National Parks, to conserve the important biodiversity found in those forests, to provide alternative sustainable development opportunities for the local communities that live adjacent to the forests and to prevent the Emissions that would otherwise occur were those dryland forests to be converted to subsistence agriculture using the Slash and Burn methods typical to this area of Kenya.

A primary focus of the Project Activities is to provide improved livelihoods either through direct employment with the Project or introduction of new or improved income-generating activities. On average, Wildlife Works retains a workforce of between 292-331 across the Project Area. In addition to the core project operations, revenue from carbon credit sales is also provided to the Wildlife Works Carbon Trust (WWCT) and is used to fund self-determined community projects.

The KCRPII provides many benefits that will help achieve Kenya's stated Sustainable Development Goals (SDGs). In 2015, Kenya joined the global community in adopting its SDGs, a set of 17 universal goals covering the thematic areas of environmental, economic and social development. They are structured to help drive national funding and policy decisions. In 2016, Kenya implemented the Vision 2030 plan, a long-term development plan with the goal of transforming Kenya into a newly industrializing, middle-income country that provides a high quality of life to all its citizens by 2030, within a clean and secure environment. These two sustainable development plans are coordinated in their goals and thematic areas. The climate, community and biodiversity benefits provided by KCRPI, and detailed in sections 3, 4 and 5, all contribute to achieving the global and national sustainable development goals detailed in these two plans. These contributing benefits are monitored through KCRPII's climate, community and biodiversity monitoring plans. SDGs that KCRPII will directly contribute to include:

- Goal 1: No Poverty
- Goal 2: Zero Hunger
- Goal 3: Good Health and Well-being
- Goal 4: Quality Education
- Goal 5: Gender Equality
- Goal 6: Clean Water and Sanitation
- Goal 8: Decent Work and Economic Growth
- Goal 10: Reduced Inequalities
- Goal 12: Responsible Consumption and Production
- Goal 13: Climate Action

¹ UN IPCC, Good Practice Guidance for LULUCF, Table 3A.1.8;

² The earliest record that has been located is dated 1895 which identifies the area as forested [Hobley 1895 – Upon a Visit to Tsavo and the Taita Highlands – The Geographical Journal 1895 Vol 5 No 6 pp 545-561]

- Goal 15: Life on Land
- Goal 16: Peace Justice and Institutions
- Goal 17: Partnerships for the Goals

The Project's climate benefits include the avoided emission of 14,883,342 tCO₂e during this first monitoring period. The Project will generate substantial community and biodiversity co-benefits. New and sustainable livelihood opportunities, such as direct employment, alternative income generating activities (IGAs) and initiatives to stimulate investment in businesses will be designed to reduce pressure on the environment while significantly increasing community well-being. Additional programs will address food security, improve health and education facilities, as well as raise environmental awareness. Biodiversity co-benefits will be achieved through greater protection of the ecosystem predominantly by means of increased security and improved monitoring. The Project will also be protecting critical habitat for significant populations of many IUCN red-listed species, including African elephant, Grevy's zebra, Lion, African Wild Dog, Leopard, Cheetah, Secretary bird, Martial Eagle, Bateleur and several vulture species.

Please visit VERRA's registry website – <https://registry.verra.org/app/projectDetail/VCS/612>, or the Project Office to view full project documentation.

Project Location

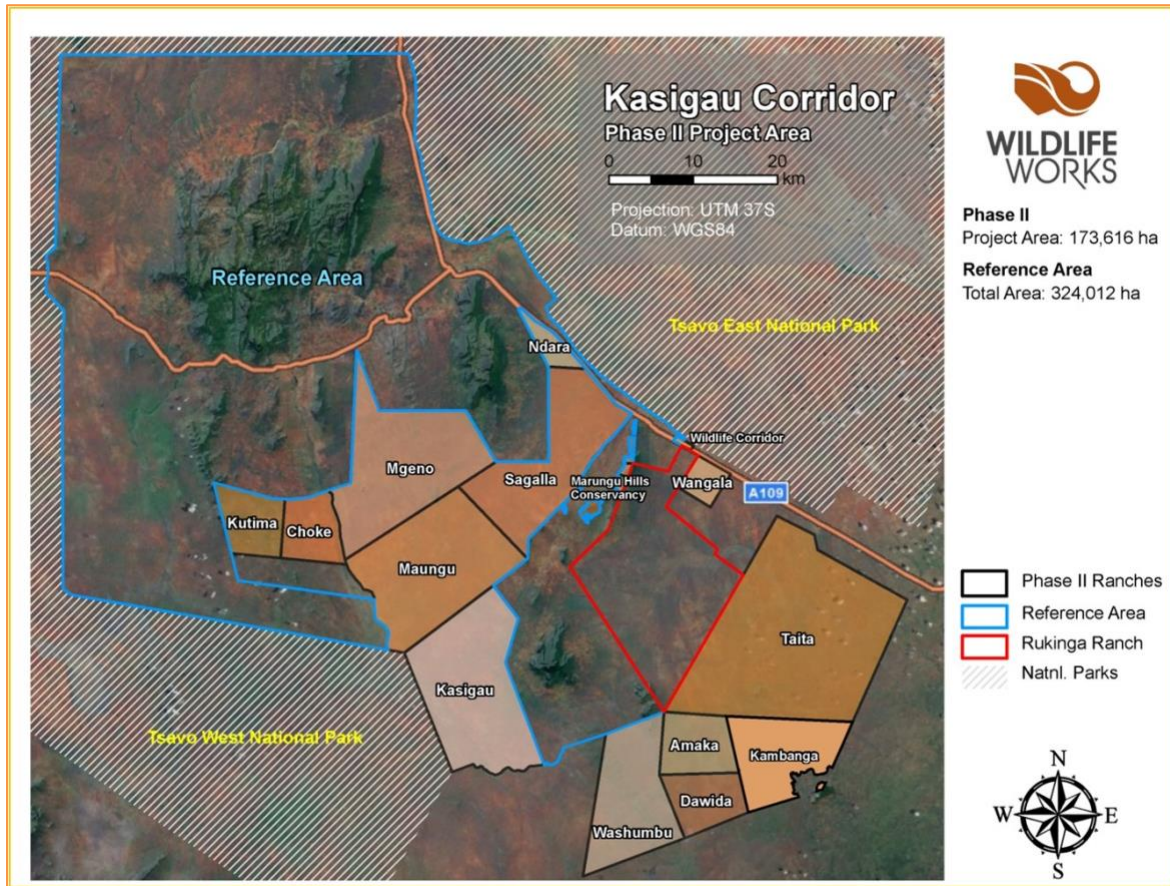


Figure 1. KCRPII Project location

Extent Boundary	Location (Easting, Northing UTM Zone 37S)
Northern Extent GPS Point	458240 E, 9619262 S
Eastern Extent GPS Point	503214 E, 9584109 S
Southern Extent GPS Point	465903 E, 9552171 S
Western Extent GPS Point	422023 E, 9598523 S

Important Project Dates and Milestones

Date	Milestone(s) in the Project's Development and Implementation
01 January 2010	Project Start Date
01 January 2010	Start of Project Activity, protection of forest from deforestation and degradation.
Predates project start (2010) - Present	Tree Nursery
Since project start (2010) - Present	Jojoba propagation
Since project start (2010) - Present	Wildlife Works Greenhouse and selling point
Since project start (2010) - Present	Reforestation of Mt. Kasigau and surrounding area
Since project start (2010) - Present	Wildlife Carbon Trust: School Construction and Renovations, Infrastructure provision, Bursary Scheme, Agri-business, and Water and health-related Projects.
Since project start (2010) - Present	Community Wildlife Scouts
Since project start (2010) - Present	Forest and Biodiversity Monitoring
Since project start (2010) - Present	Project Product Sales and Marketing
Since project start (2010) - Present	Security and Ranger Patrols

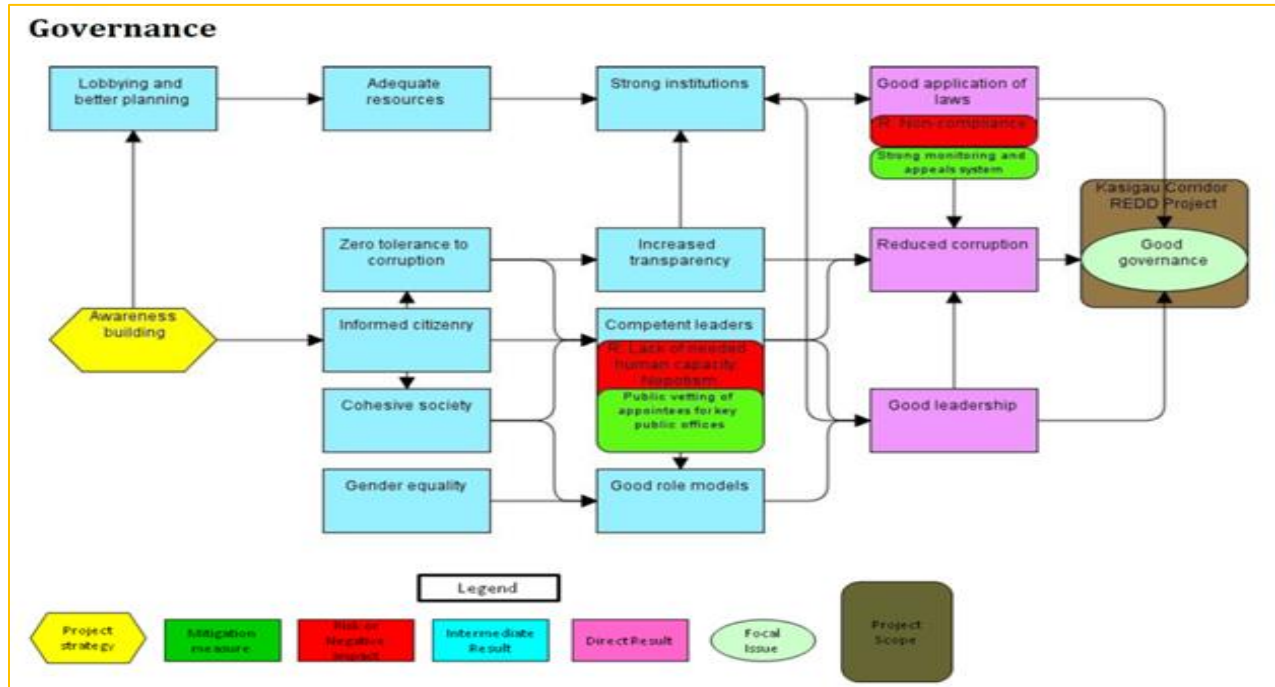
Since project start (2010) - Present	REDD+ Carbon Inventory Monitoring
Expansion completed in October 2011 Print factory opened in November 2011	Eco Factory Expansion and Print Factory
27 April 2011	CCB Validation
13 May 2011	VCS Validation
13 May 2011	VCS Verification M1
25 May 2011	CCB Verification M1
Built in 2012 – Maintained to the Present	Group Ranch Office Renovations / Construction
30 November 2012	VCS Verification M2
5 December 2012	CCB Verification M2
2012 - Present	Support to Community Based Organizations: Sagalla Conservation and Development Forum (SCDF), Mwatate District Stakeholders' Forum (MDSF) and Mwachabo Development Forum (MDF), Marungu Hill Conservancy Forum (MHC), Kasigau Development Trust (KDT) and Mackinnon Road CBO.
Started in testing phase 2011, moved to new facility on Taita Ranch early 2013 – Present	Wildlife Works Eco-Charcoal Production Facility
New building operating from 2013 – Present	Wildlife Works Soap Factory

21 May 2013	VCS & CCB Verification M3
2013 - Present	Local Production Clothing Factory
2013 – Present (some operations disrupted by COVID-19)	Wildlife Works Health Projects
2014 - Present	Support to Establishing / Maintaining the Tsavo Conservancy
02 September 2015	VCS & CCB Verification M4
24 August 2018	VCS & CCB Verification M5
Officially opened in 2019 - Present	Ecotourism Projects: Kivuko Eco Camp in Taita
12 June 2020	VCS & CCB Verification M6
06 December 2021	VCS & CCB Verification M7
16 May 2022	Date Project Submitted for Listing under the SD VISTa program of Verra.
22-29 June 2022	VCS/CCB M8 Verification, and SD VISTa Validation & Verification Field Audit

Causal Chain(s)

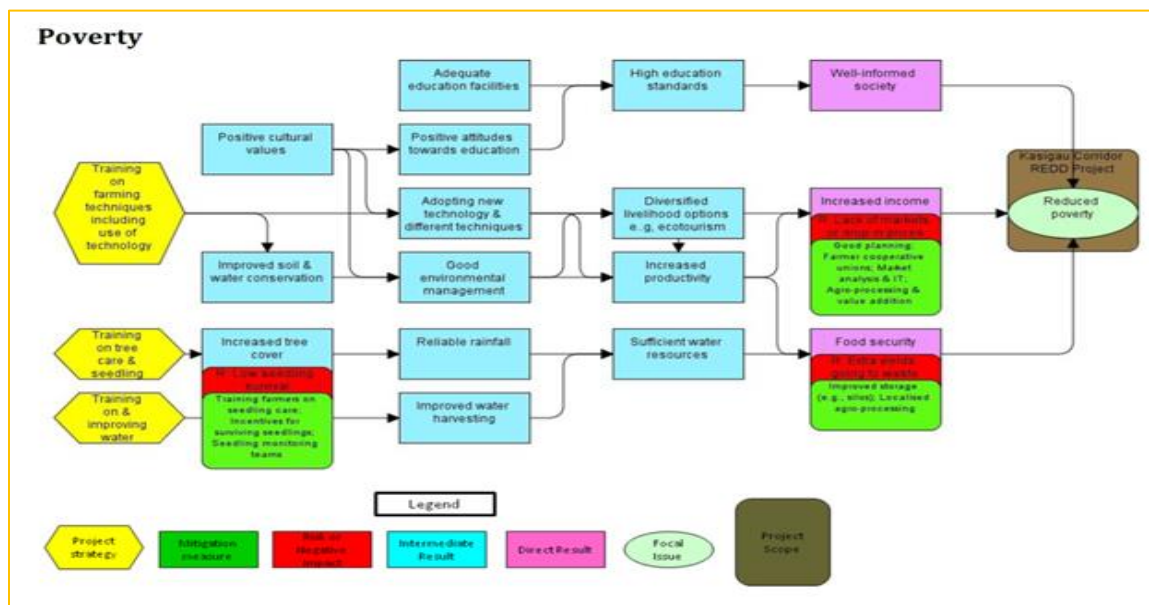
a) Focal Issue i: Governance: incorporating leadership and gender inclusivity

IF there is a knowledgeable and well-informed citizenry, IF there are competent leaders providing good leadership and building strong institutions, and IF the rule of law is upheld, THEN we shall have good governance.



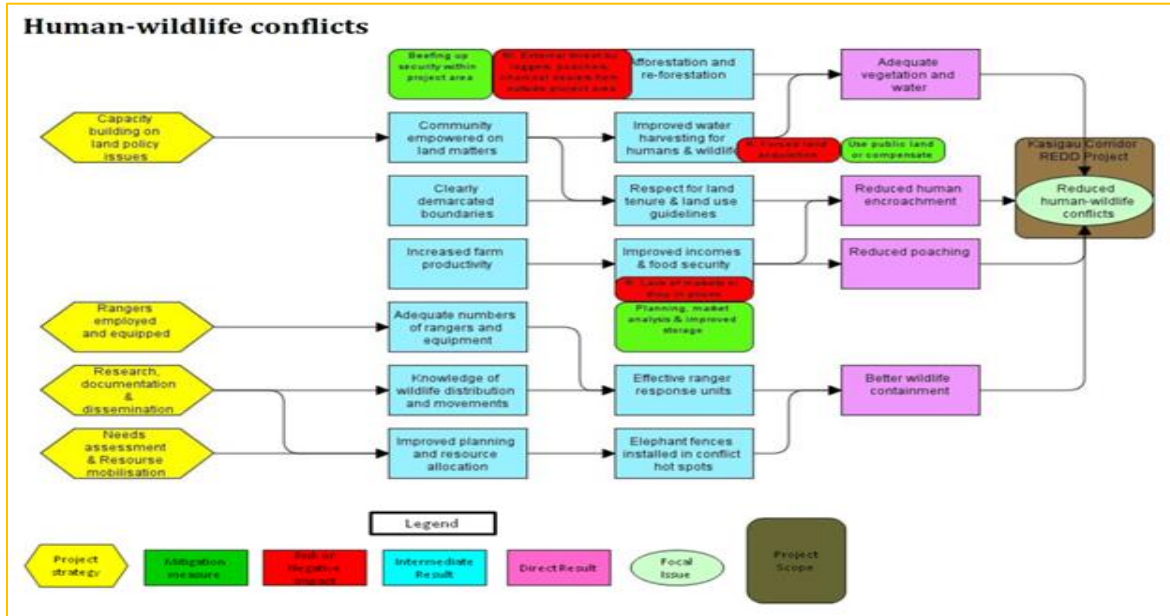
b) Focal Issue ii: Poverty: jobs and income-generating activities

IF we have a well-informed (knowledgeable) society and IF improved environmental management supports diverse income-generating activities and assures food security for all households, THEN poverty shall be reduced.



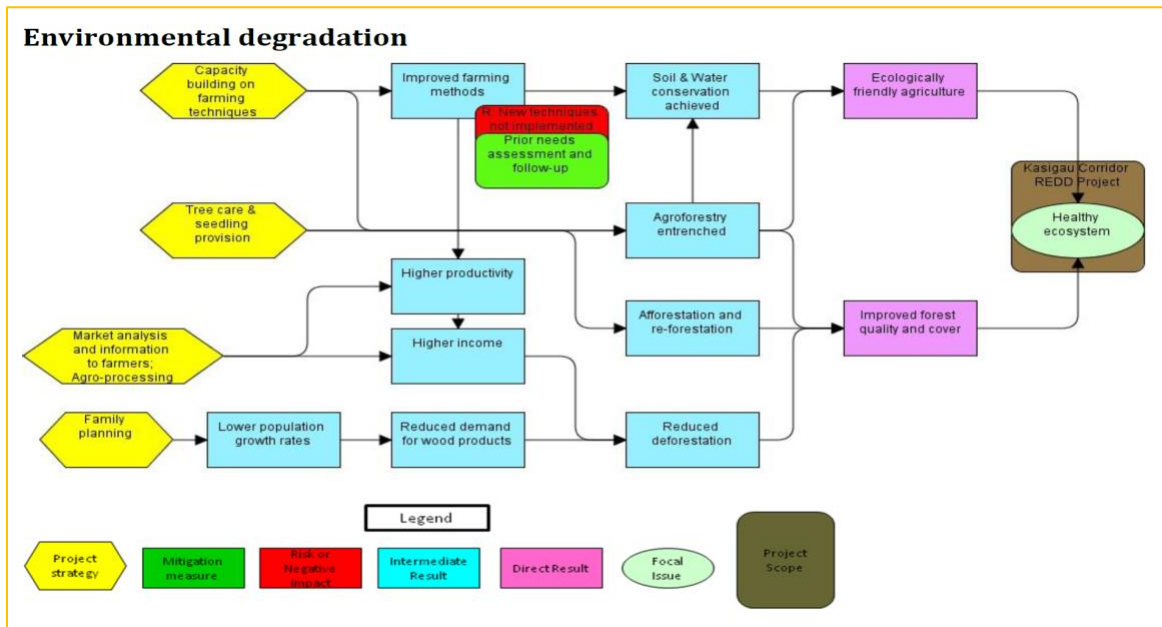
c) Focal Issue iii: Human-wildlife conflict

IF there water harvesting and wildlife habitats were improved, IF wildlife was better managed and controlled within their habitats, and IF food security was assured and incomes increased, THEN human-wildlife conflict will be reduced.



d) Focal Issue iv: Environmental degradation: including deforestation and agricultural issues

IF the community implements improved farming methods, IF tree planting is practiced in agricultural and deforested areas, and IF land tenure is secured, THEN environmental degradation will diminish and tree cover increase leading to healthy ecosystems



e) Focal Issue v: Education

IF the society develops a positive attitude towards education, IF there is sustained funding for the education sector by the Government and other donors, and if all education resources are properly used, THEN we will achieve high education standards.

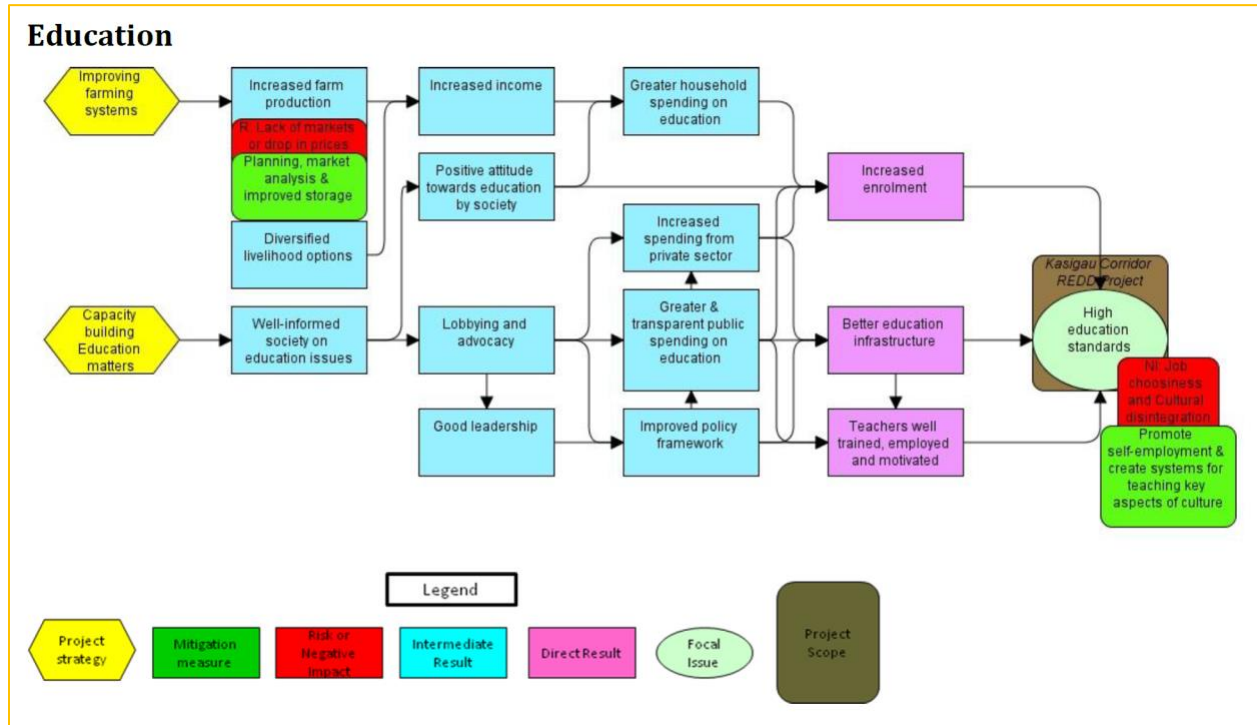


Figure 2: Results Chains underlining the theory of change logic for the three Focal Issues identified during community SIA workshops for the KCRPII.