



**Gold Standard**<sup>®</sup>  
for the Global Goals

TEMPLATE

# KEY PROJECT INFORMATION & VPA DESIGN DOCUMENT (PDD)

---

PUBLICATION DATE **04.05.2022**

VERSION **v. 2.0**

RELATED SUPPORT - [Programme of Activity requirements](#)

---

This document contains the following Sections

Key Project Information

Section A – Description of project

Section B - Application of approved Gold Standard Methodology (ies) and/or demonstration of SDG Contributions

Q – Duration and crediting period

Q – Summary of Safeguarding Principles and Gender Sensitive Assessment

Q – Summary of Local stakeholder consultation

Q - **Eligibility and inclusion criteria for VPAs inclusion**

Appendix 1 – Safeguarding Principles Assessment (mandatory)

Q - Contact information of VPA Implementer (mandatory)

Appendix 3- LUF Additional Information

Q - Summary of Approved Design Changes (VPA specific)

## KEY PROJECT INFORMATION

Type of VPA	<input type="checkbox"/> Real case VPA <input checked="" type="checkbox"/> Regular VPA
Scale of VPA  Note that a VPA can be of one scale. Please select applicable scale accordingly.	<input checked="" type="checkbox"/> Microscale <input type="checkbox"/> Small scale <input type="checkbox"/> Large scale
Title of corresponding real case VPA (if applicable)	
GS ID of real case VPA (if applicable)	
GS ID of VPA	GS11645
Title of VPA	GS11645 Myanmar Stoves Campaign - Soneva in Myanmar GS1729- VPA No. 019
Time of First Submission Date	08/04/2022
Date of Design Certification	To be decided
Version number of the VPA-DD	03
Completion date of version	10/10/2023
Coordinating/managing entity	Soneva Foundation
VPA Implementer (s)	Soneva Foundation, Mercy Corps Myanmar
Project Participants and any communities involved	Soneva Foundation
Host Country (ies)	Republic of the Union of Myanmar
GS ID and Title of applicable Design Certified VPA	
GS ID and Title of applicable Performance Certified VPA	
Activity Requirements applied	<input checked="" type="checkbox"/> Community Services Activities <input type="checkbox"/> Renewable Energy Activities

	<input type="checkbox"/> Land Use and Forestry Activities/Risks & Capacities <input type="checkbox"/> N/A
Other Requirements applied	VPA under POA GS1729
Methodology (ies) applied and version number	The Gold Standard Simplified Methodology for Efficient Cookstoves, Version 3.0
Product Requirements applied	<input checked="" type="checkbox"/> GHG Emissions Reduction & Sequestration <input type="checkbox"/> Renewable Energy Label <input type="checkbox"/> N/A
VPA Cycle:	<input checked="" type="checkbox"/> Regular <input type="checkbox"/> Retroactive

**Land-use & Forest and Agriculture - Key Project Information<sup>1</sup>**

**Table 1 – Estimated Sustainable Development Contributions**

Sustainable Development Goals Targeted	SDG Impact	Amount Achieved	Units/ Products
SDG 13: Take urgent action to combat climate change and its impacts	Emissions Reductions	9,357	VERs
SDG 3: Ensure healthy lives and promote well-being for all ages	Improvement of health and safety by reducing the number of mortality rate attributed to	8626	People

---

<sup>1</sup> Please refer to 0 for detailed information on LUF projects

---

household and ambient  
air pollution.

---

SDG 7: Ensure access to affordable, reliable, sustainable and modern energy for all	Improvement in energy efficiency in cooking practices.	1,786	Households
---	--	-------	------------

---

## SECTION A. DESCRIPTION OF PROJECT

### A.1. Purpose and general description of project

>>

The purpose of this micro-scale VPA is the use of carbon finance to support the distribution and maintenance of domestic Fuel-Efficient Stoves ("FES") through local Implementation Partners ("IP") in Myanmar. Household energy surveys conducted in rural communities in the Dry Zone and Delta Region in Myanmar confirm that the current cooking practice is the use of "three stone fires" with wood as the predominant fuel. By using the FES, families will replace the traditional three-stone fires with a superior technology that reduces wood consumption and GHG emissions while bringing considerable additional benefits to their health and safety, economic well-being and local capacity building/job creation required for marketing and sales of these FES.

The VPA is implemented by Soneva Foundation, which is also the Coordinating and Managing Entity (CME) of the PoA. Soneva Foundation will implement the programme in partnership with local partners and would ensure the last-mile distribution/installation of the Improved Cookstoves(ICS) to the beneficiaries.

### **Benefits of the VPA**

The micro-scale VPA will contribute to the sustainable development in Myanmar by offering specific environmental, social and economic benefits.

- Improving household air quality: According to the WHO, nearly 50% of pneumonia deaths amongst children under five are due to smoke and particulate matter inhaled from indoor air pollution. People exposed to heavy indoor smoke are 2-3 times more likely to develop chronic obstructive respiratory diseases. By using the clean-burning FES, households are expected to be less exposed to Indoor Air Pollution and uneasiness while cooking as compared to open fires used for cooking. The Global Burden of Disease study suggests that household air pollution is directly responsible for 3.5 million premature deaths annually.
- Protecting biodiversity: The use of biomass by households for cooking is a major cause of deforestation in developing countries and in Myanmar, in particular. The use of the FES distributed under the VPA will significantly reduce the amount of

wood consumed by households and reducing pressure on forest resources locally and further afield.

- Creating employment: Employment opportunities will be created through the retailing of FES technologies. Local vendors will be trained to act as distribution partners responsible for awareness raising, selling, and maintenance of FES in the communities.
- The livelihood of the poor: Households saves time and money in collecting/purchasing firewood due to the FES. These savings are expected to have a positive impact on disposable incomes and could allow the households to spend time/money in other productive areas such as nutrition, education, and health.
- Human and institutional capacity: Over time, the PoA will support the transfer of technology and skills to local manufacturers and local small businesses.

CME approves VPA-19 to be included under the PoA 1729

#### A.1.1. Eligibility of the VPA under approved PoA

>>

The VPA aims to improve end-use energy efficiency by providing FES technology in multiple region of Myanmar. Therefore, the project is in accordance with Gold standard's eligibility criteria given in Annex C of the GS toolkit, since it belongs to project type "Improved distributed heating and cooking devices". End users are aware of and willing to give up their rights to emission reductions by signing a contractual agreement with the project developer and this has been discussed during the local stakeholder consultation meeting.

The VPA will provide FES technology to vulnerable families in Myanmar which would not occur in the absence of carbon finance. The project does not receive or benefit from Official Development Assistance (ODA). The project developer also declares that this project is not registered with any other schemes. Soneva Foundation, as the CME of the PoA, shall verify that each VPA meets the eligibility conditions of a micro-scale -VPA

under the applied methodology before inclusion in the PoA. For inclusion in the PoA the VPA must meet the following eligibility criteria:

Table 2 Eligibility for VPA inclusion as per PoA requirements

No.	Eligibility Criterion	Description/ Required condition	Description of the VPA in relation to the criteria, Means of Verification and Supporting evidence for inclusion
1	Biomass fueled cookstove fit for local conditions and preferences.	Envirofit M-5000 (SuperSaver GL) has been tested in various villages in the target location and was voted by the community as the preferred technology.	Results of product tests are summarized in the Field Test Report available upon request.
2	Efficiency levels sufficiently high to make a considerable impact.	Fuel savings 66%; CO <sub>2</sub> savings 66% CO savings 82% PM reduction 70% <sup>2</sup>	<a href="http://envirofit.org/product/cookstoves/supersaver-gl-wood/">http://envirofit.org/product/cookstoves/supersaver-gl-wood/</a>
3	Expected product life	Up to 7 years	<a href="http://envirofit.org/product/cookstoves/supersaver-gl-wood/">http://envirofit.org/product/cookstoves/supersaver-gl-wood/</a>
4	The VPA is located within a defined geographic boundary within the borders of a single host country as per A.4.1.2. of the PoA Design Document.	End-users mostly from the villages of several Rakhine/Magway region included in this VPA Rakhine: 20.1444° N, 92.8969° E Magway: 20.1544° N, 94.9455° E	End User Database

<sup>2</sup> <http://envirofit.org/product/cookstoves/supersaver-gl-wood/>

	townships/villages in/around		
5	All VPAs must include a means of uniquely identifying distributed FES and customers. This mechanism will identify stoves as belonging to this PoA and not any other, ensuring there is no double counting.	<p>This VPA will not be part of another single CDM project of GS project activity or VPA under another PoA. IP confirmation received. Each stove comes with a unique serial number which is fastened on the stove body. This serial number is used to enter the master database and track the stove user and location in the Total Sales Record. This serial number-based identification also helps with avoiding double counting. Serial Number Plate at the rear of the stove. The project host country in the Republic of the Union of Myanmar, which does not have any cap enforced and there is no risk of any double-counting. Furthermore: i) The location is a Non-Annex B party without binding targets as per the Kyoto protocol. ii) Myanmar does not have an international commitment that includes the potential for trade of emissions with other countries. iii) Myanmar does not include for a regulated, domestic level emissions trading scheme or carbon tax that accounts for the Scope of the Gold Standard Activity (Ref: <a href="https://icapcarbonaction.com/en/">https://icapcarbonaction.com/en/</a>)</p>	Each FES distributed under the VPA can be traced by its unique serial numbers and is recorded in the Total Sales Record (End User Database).
6	The annual emissions	Estimated emissions reductions of the cookstoves included in this VPA do not exceed 10,000. If a VPA exceeds the	ER calculation sheet

	reductions of the VPA shall not exceed 10ktCO2e/year over the entire crediting period <sup>3</sup>	applicable limit in any year, the emission reduction claimed shall be capped at 10,000 tCO2.	
7	Each VPA-DD shall demonstrate that firewood is the primary fuel used by the target population of the project activity.	92% of households surveyed use firewood as fuel	Baseline survey report. End User Database.
8	Each VPA shall demonstrate that the baseline stove is a three stone fire or a conventional device without a grate or a chimney.	Around 86% of the households use the rudimentary Three Stone Stoves in the region. 5% use Concrete, and 1% found to be using an Iron Stove, however, both categories use firewood as a fuel. Only 8% of the household was found to be using Charcoal Stoves. 4 As mentioned in the PoA-DD, according to the FAO between 80-100% of Myanmar's population relies on wood for cooking (Ref: Weblink). Soneva Foundation along with the implementation partners, Mercy Corps Myanmar conducted a baseline survey in March 2018 in the dry zone region villages which had villages similar in this VPA	<a href="https://www.dropbox.com/s/rcalwdr6h3xrd2b/FAO%20State%20of%20Worlds%20Forest%202014.pdf">https://www.dropbox.com/s/rcalwdr6h3xrd2b/FAO%20State%20of%20Worlds%20Forest%202014.pdf</a> Baseline survey report. End User Database.

<sup>3</sup> <https://globalgoals.goldstandard.org/101-par-principles-requirements/>

		<p>on the socio-economic status and fuel consumption patterns. The report presents a finding that in the central Dry Zone, 92% of households use firewood for cooking. The most commonly used cookstove is the three-stone fire or a three-stand, and in few some cases, A1 or concrete/charcoal stoves. The baseline survey is representative of households in rural areas.</p> <p>In case of VPA 019</p> <p>a) These VPA include households only and not any other user groups.</p> <p>b) The VPAs are in similar geographic conditions and, socio-economic status of the end-users. Cultural similarities exist and cooking habits/patterns too are same. Due to these reasons, the CME has applied baseline study conducted in March 2018 to this VPA.</p>	
9	<p>The use of the baseline technology as a backup or auxiliary technology in parallel with the improved technology introduced by the project activity is permitted as long as a mechanism is put into place to</p>	<p>Vendors and IP staff strongly encourage end-users to remove old three-stone stoves during sales event and follow up visits. The monitoring plan and project survey will account for baseline stove usage. Objective Observer to confirm claims during site visits. Putting a mechanism in place, for example providing incentives for endusers to not use baseline proves to be expensive and ineffective on two fronts: a) Distributing Incentives, b)</p>	<p>The monitoring plan and project survey</p>

	<p>encourage the removal of the old technology (e.g. discounted price for the improved technology) and the definitive discontinuity of its use.</p>	<p>Monitoring whether old stoves are being not used in actual, and it is incredibly difficult to do spot checks among thousands of users which are spread widely from each other. The new FES is a value product and is available to the end-user at a highly subsidized price with easy payment plans, we also offer the same incentives when an HH wants to buy an additional stove and /or replacement (outside warranty period), and based on our observations and interactions with the end-users, they prefer cooking on FES, and only resort to using three stone fires when they have to cook for a larger audience (in case of festivals, gatherings, etc.). This is a classic case where users themselves have realized the benefits and comfort of cooking on the new FES over the old baseline stove and does not require any further incentives for not using baseline stove. The PP wants to share that the baseline stove usage is a part of the annual monitoring exercise, however.</p>	
10	<p>Micro-scale VPA in Least Developed Country automatically additional. However, in case of retroactive</p>	<p>Justification: The Myanmar Stoves Campaign is a project which directly improves the lives of the poor and under-served households in the rural regions of Myanmar and curbs down the environmental damage to a significant level by reducing the</p>	<p>Myanmar falls under the LDC, which is the project region.</p>

	<p>registration, the justification must be provided.</p>	<p>anthropogenic emissions of greenhouse gasses which would have not occurred without the project. The role of carbon finance was always considered right at the project design phase and is crucial to be able to highly subsidize the technology (fuel efficient stove) and cover the cost of distribution, operations and management for the project. The project model was designed right from the start after considering the carbon revenues, in the absence of which, this project would have not happened. The PP intends to use the carbon revenue in scaling up the project and maximize the positive impact it generates.</p>	
11	<p>The VPA start date shall be after the PoA validation start date (21st December 2015).</p>	<p>Start date of stove distribution of this VPA is 01/08/2021. The stove distribution started on 01/08/2021 and finished on 30/10/2021.</p>	<p>End User database</p>
12	<p>The Implementation Partner has developed a monitoring plan agreed with the CME.</p>	<p>Monitoring plan developed and agreed between CME and IP.</p>	<p>Monitoring plan</p>
13	<p>All VPAs shall demonstrate that IPs have distributed FES to domestic households, communities, SMEs</p>	<p>The location and type of every customer is collected via the FES Sale Agreement and recorded in the customer database. Target end users have been agreed between IP and CME and are documented in the</p>	<p>End User database</p>

	or institutions such as monasteries.	Implementation Plan. This VPA includes households only.	
14	All VPAs will meet one of the following conditions: a) will not receive any funding from Annex I parties, or b) will receive Annex I party funds that do not result in a diversion of ODA.	ODA declaration included Annex 2	ODA declaration
15	In accordance with GS Annex C, the activity needs to proof that end-users are aware of and willing to give up their rights on emission reductions.	Minutes of Local Stakeholder Consultation meeting provided later in the document. Carbon asset transfer agreement included in the sales agreement.	Sales agreement
16	The duration of the crediting period of each VPA to be included in the PoA shall not exceed the end date of the registered PoA. The start date of the crediting period of a VPA shall be on or after: a) the date of registration of the PoA if the	5-year renewable crediting period. The final date for which ERs can be credited shall be no later than 15 years after the date of registration of the PoA.	VPA start date

<p>corresponding VPA-DD is submitted together with the request for registration; or b) the date when the VPA was included in accordance with the Project cycle procedure.</p>		
---	--	--

In addition to this, the following table shows adherence to the section “GENERAL ELIGIBILITY CRITERIA” of the Gold Standard for the Global Goals Principles & Requirements.

<b>General Eligibility Criteria</b>	<b>Clarification</b>
(a) Types of Project:	Myanmar Stoves Campaign is a Gold Standard micro-scale project which is distributing fuel-efficient cookstoves in the rural regions of the Republic of the Union of Myanmar since 2013.
(b) Location of Project:	The project is implemented in the Republic of the Union of Myanmar.
(c) Project Area, Project Boundary and Scale:	The project boundary is within the territorial limits of the Republic of the Union of Myanmar. This micro-scale project is not registered with any other standard/scheme other than the Gold Standard, and hence, not double counted.
(d) Host Country Requirements:	Myanmar Stoves Campaign is in compliance with the Republic of the Union of Myanmar’s legal, environmental, ecological and social regulations. The relevant ministries/department(s) of the government are keen supporters of this project.

(e) Contact Details:	<p>Project Owner and CME:</p> <p>Mr. Arnfinn Oines Secretary Soneva Foundation 142 Sukhumvit Rd. 19/F Two Pacific Place Bangkok 10110 Thailand</p> <p>(Mobile): +66 89 667 2346 (Landline): +66 (0) 2631 9698 (Email): <a href="mailto:arnfinn@soneva.com">arnfinn@soneva.com</a></p>
(f) Legal Ownership:	<p>Full and uncontested legal ownership of all Products that are generated under Gold Standard Certification, from the Myanmar Stoves Campaign project are with the Soneva Foundation shall be demonstrated. This ownership is/was transferred from project beneficiaries with a full prior consent via signing a carbon transfer agreement form by the end-users.</p>
(g) Other Rights:	<p>The project design does not require any uncontested legal rights and/or permissions concerning changes in use of other resources required to service the Project (for example, access rights, water rights etc.).</p>
(h) Official Development Assistance (ODA) Declaration:	<p>The project has not, and will not benefit from any form of ODA. For more on this, please refer to the Annex 2 of this design document.</p>

A.1.2. Legal ownership of products generated by the VPA and legal rights to alter use of resources required to service the project

>>

The Soneva Foundation is the project owner has signed contractual agreements with the end-user, who are aware and willing to give up their rights on emission reductions and handing it over to Soneva Foundation. Soneva Foundation, thus, maintains full control and ownership over the products generated by the project and legal rights to alter use of resources required to service the project.

**A.2. Location of VPA**

>>

Host Country: - Republic of the Union of Myanmar

Region/State/Provinces: - Rakhine, Magway

City/Town/Community: - This VPA is to be implemented across villages in Rakhine and Magway region of the country.

The geographic location of the project activity and stoves distributed under VPA – 019 are majorly in the villages of:

Some of these villages are:

State/Region	Township_Name	Village_Tract	Village_Name	Longitude	Latitude
Rakhine	Mrauk-U	Than Chaung	Pi Pin Yin	93.13385773	20.65553
Rakhine	Mrauk-U	Pya Hla	Pya Hla	93.11791229	20.6529
Magway	Minbu	Aing Ma	Aing Ma	94.62380219	20.11566
Mandalay	Kyaukpadaung	Popa	Chaung Hpyar	95.17495728	20.91373
Chin	Mindat	M'ghinghlaw	M'ghinghlaw	93.97653961	21.4755
Chin	Mindat	M'ghinghlaw	Hpa Yar Sa Khan	94.01254272	21.44117
Rakhine	Ramree	Yan Thit Chay	Yan Thit Chay	93.87631226	19.14645
Rakhine	Ramree	Yan Thit Chay	Hpet Kya	93.91359711	19.1452
Rakhine	Ramree	Let Pan	Chaung Nei	93.89572906	19.13100
Rakhine	Ramree	Let Pan	Pyin Shey	93.89795685	19.12231
Rakhine	Mrauk-U	Mrauk-U Town	Nyaung Pin Zay Ward	93.194171	20.593
Magway	Pwintbyu	Than Kaing	Than Kaing	94.80197906	20.4493

The project implementation location is:

Rakhine: 20.1444° N, 92.8969° E

Magway: 20.1544° N, 94.9455° E

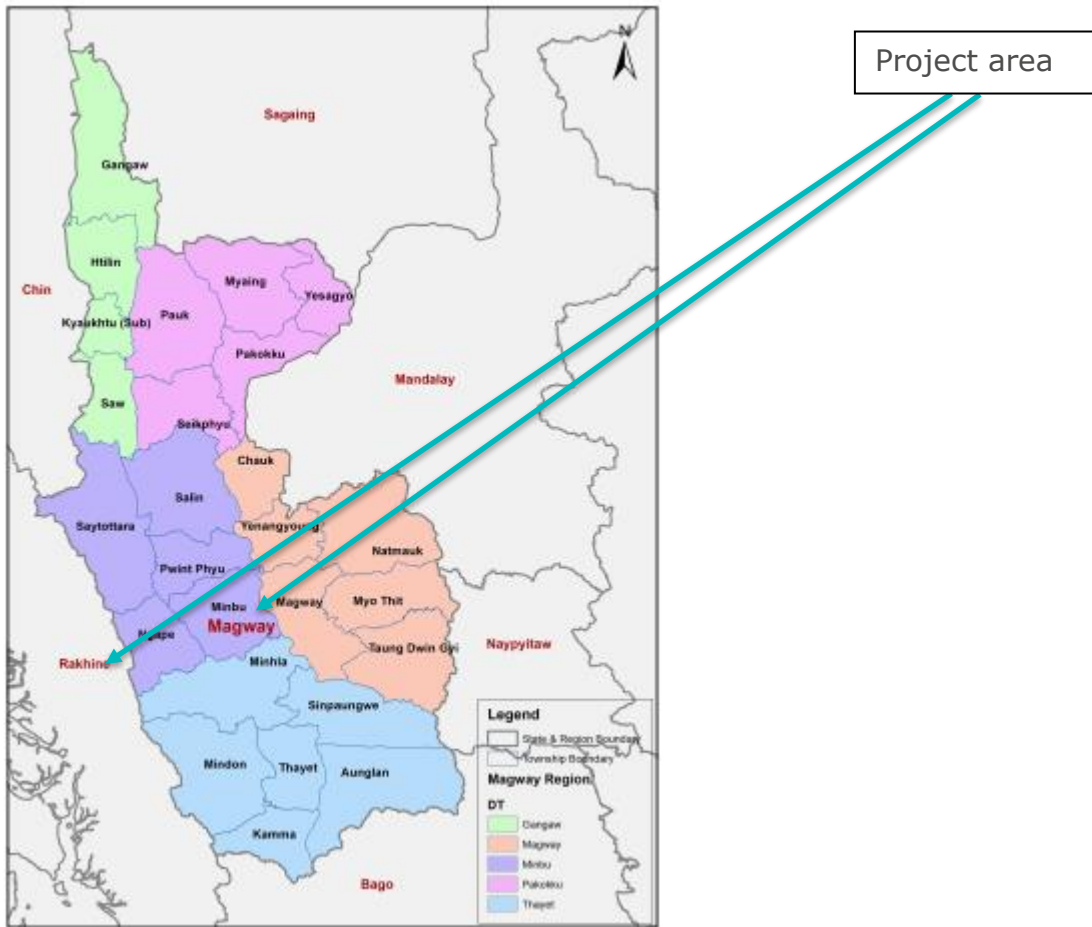
Area Map:



Source: United Nations (2012).

Department of Field Support, Cartographic Section

Figure 1: Overview of the Dry Zone



**A.3. Technologies and/or measures**

>>

The VPA will distribute imported FES technology that has been selected together with input from local communities and stakeholders. A selection of suitable FES was tested during field tests by women of local communities in the project area. Taking into consideration the feedback collected through interviews and evaluation forms, a number of suitable products were identified.

Selected FES model for this VPA:

Envirofit M5000



- Envirofit M-5000, launched in 2011, is the successor model of the G-3300 and is produced in China, India and Kenya
- Product weight 4.2kg
- Size (height x width in cm): 29.2 x 27.8
- CO2 emission reduction compared to three stone fire of 66%
- Wood use reduction compared to three stone fire of 66%
- Thermal efficiency of 29.7%
- One year limited warranty from the manufacturer
- Estimated product life of 5 years

### Management and operational considerations

Three actors work together on the successful development of the project activity. Soneva Foundation acting as the CME is overseeing the overall project development and ensures compliance with Gold Standard requirements. Mercy Corps is the Implementation Partner (IP) is in direct and almost daily contact with the local vendors and end users. Finally, the local vendors have the important role of organizing sales and after sales services, social marketing events, data collection and monitoring with the support of the IP.

The CME shall maintain an electronic database of all relevant data pertaining to the performance and ongoing activities of each VPA. The CME will provide an Excel-based tool to the IP to ensure that monitoring requirements are comprehensively met in a consistent manner.

The IP develops a suitable implementation plan together with the CME. Responsibilities during project setup and ongoing operation are agreed and training for specific tasks is provided through the CME.

#### **Main IP responsibilities during project setup phase are:**

- Identification of target townships, villages, and households
- Conduct product field tests and baseline surveys if necessary
- Manage Local Stakeholder Consultation process
- Logistics support

- Identify and train local vendors at the village level and set up micro-franchise model

Main IP responsibilities during sales operation are:

- Work with local vendors on catalyzing the distribution of stoves in an efficient manner and maintaining sales register and project database that allows effective monitoring and verification and handling of maintenance and replacement activities
- Oversee operation of micro-franchise scheme including collection of repayments
- Logistics support

Mercy Corps Magway office is responsible for the implementation of this VPA. The office consists of dedicated staff and has been present in the target division for five years implementing a number of different projects.

Local vendors will receive extensive training and support from the IP. Their role is to manage the sales and service activities. They will be responsible to record sales data for the sales register. This data includes:

- Date of sale
- Name of end user
- Address and contact number
- Stove model and serial number
- Type of stove which the FES is replacing, and fuel used

The data is collected in paper format and transferred to an electronic project database managed by the IP. The identification of each FES sold and in use is possible through the information compiled in the project database. This information is regularly screened and checked by the CME and will be available for validation and verification purposes.

### **Handling of stove replacements**

Customers can contact their local vendor representative to request replacements free of charge during the guarantee period. The local vendor will contact the Implementation Partner and provide required quantities and distribution of replacement stoves will be arranged in a timely fashion. The warehouse in Magway always keeps a stock of stoves for replacement ensuring minimum disruption. Should the stove be faulty within 1 year, a free replacement will be arranged and beyond the one year the product is covered by the Envirofit guarantee where we would arrange the replacement of certain parts such as the ceramic bottom inlet. In the event of a broken stove after the warranty period,

customers can opt to purchase a new M-5000 stove at the agreed subsidized price. As users experience the benefits of the stove it is expected that they will purchase a replacement.

Replacements will have to be the same model or any updated version from the same manufacturer. If the replacement stove is from a different manufacturer, the CME has to provide product information and proof that the efficiency of the new stove is equal or superior to the project stove. The annual verification process and monitoring report will provide information on the sustained use of the project stove or new stove model if relevant.

In the event that the project does not continue after 5 years, users can make no claims for replacement stoves and have to source alternative cookstoves.

#### **A.4. Scale of the VPA**

>>

The project is a micro-scale activity. The number of stoves included in the VPA is dependent on the ER factor per stove/hh/year. The CME ensures that the micro-scale limit will not be exceeded. As per the baseline calculation sheet, this VPA will include 1,804 eligible stoves to remain below the 10,000 tCO<sub>2e</sub> thresholds.

#### **A.5. Funding sources of VPA**

>>

Soneva Foundation provides the funding for the stoves and operations & management of this program, which it aims to cover through future sales of VERs and other products coming out of this project. No public funding was received or used for the VPA. No public funding will be used in the future for implementing the VPA.

## SECTION B. APPLICATION OF APPROVED GOLD STANDARD METHODOLOGY (IES) AND/OR DEMONSTRATION OF SDG CONTRIBUTIONS

### B.1. Reference of approved methodology (ies)

>>

We apply The Gold Standard Simplified Methodology for Efficient Cookstoves, Version 03.

### B.2. Applicability of methodology (ies)

>>

Soneva Foundation, as the CME of the PoA, shall verify that each VPA meets the eligibility conditions of a micro-scale -VPA under the applied methodology before inclusion in the PoA. For inclusion in the PoA the VPA must meet the following eligibility criteria:

No.	Eligibility Criterion	Description/ Required condition	Means of Verification/ Supporting evidence for inclusion
1	Biomass fueled cookstove fit for local conditions and preferences.	Envirofit M-5000 (SuperSaver GL) has been tested in various villages in the target location and was voted by the community as the preferred technology.	Results of product tests are summarized in the Field Test Report available upon request.
2	Efficiency levels sufficiently high to make a considerable impact.	Fuel savings 66%; CO2 savings 66% CO savings 82% PM reduction 70% <sup>4</sup>	<a href="http://envirofit.org/product/cookstoves/supersaver-gl-wood/">http://envirofit.org/product/cookstoves/supersaver-gl-wood/</a>

<sup>4</sup> <http://envirofit.org/product/cookstoves/supersaver-gl-wood/>

3	Expected product life	Up to 7 years	<a href="http://envirofit.org/product/cookstoves/supersaver-gl-wood/">http://envirofit.org/product/cookstoves/supersaver-gl-wood/</a>
4	The VPA is located within a defined geographic boundary within the borders of a single host country as per A.4.1.2. of the PoA Design Document. townships/villages in/around	End-users mostly from the villages of several Magway/Rakhine region included in this VPA	End User Database
5	All VPAs must include a means of uniquely identifying distributed FES and customers. This mechanism will identify stoves as belonging to this PoA and not any other, ensuring there is no double counting.	This VPA will not be part of another single CDM project of GS project activity or VPA under another PoA. IP confirmation received. Each stove comes with a unique serial number which is fastened on the stove body. This serial number is used to enter the master database and track the stove user and location in the Total Sales Record. This serial number-based identification also helps with avoiding double counting. Serial Number Plate at the rear of the stove. The project host country in the Republic of the Union of Myanmar, which does not have any cap enforced and there is no risk of any double-counting. Furthermore: i) The location is a Non-Annex B party without binding targets as per the Kyoto protocol. ii) Myanmar does not have an international commitment that includes the	Each FES distributed under the VPA can be traced by its unique serial numbers and is recorded in the Total Sales Record (End User Database).

		potential for trade of emissions with other countries. iii) Myanmar does not include for a regulated, domestic level emissions trading scheme or carbon tax that accounts for the Scope of the Gold Standard Activity (Ref: <a href="https://icapcarbonaction.com/en/">https://icapcarbonaction.com/en/</a> )	
6	The annual emissions reductions of the VPA shall not exceed 10ktCO <sub>2</sub> e/year over the entire crediting period <sup>5</sup>	Estimated emissions reductions of the cookstoves included in this VPA do not exceed 10,000. If a VPA exceeds the applicable limit in any year, the emission reduction claimed shall be capped at 10,000 tCO <sub>2</sub> .	ER calculation sheet
7	Each VPA-DD shall demonstrate that firewood is the primary fuel used by the target population of the project activity.	92% of households surveyed use firewood as fuel	Baseline survey report. End User Database.

<sup>5</sup> <https://globalgoals.goldstandard.org/101-par-principles-requirements/>

<p>8</p>	<p>Each VPA shall demonstrate that the baseline stove is a three stone fire or a conventional device without a grate or a chimney.</p>	<p>Around 86% of the households use the rudimentary Three Stone Stoves in the region. 5% use Concrete, and 1% found to be using an Iron Stove, however, both categories use firewood as a fuel. Only 8% of the household was found to be using Charcoal Stoves. 4 As mentioned in the PoA-DD, According to the FAO Baseline survey between 80-100% of Myanmar’s population relies on wood for cooking (Ref: Weblink). Soneva Foundation along with the implementation partners, Mercy Corps Myanmar conducted a baseline survey in March 2018 in the dry zone region villages which had villages similar in this VPA on the socio-economic status and fuel consumption patterns. The report presents a finding that in the central Dry Zone, 92% of households use firewood for cooking. The most commonly used cookstove is the three-stone fire or a three-stand, and in few some cases, A1 or concrete/charcoal stoves. The baseline survey is representative of households in rural areas. In case of VPA 019</p> <p>a) These VPA include households only and not any other user groups.</p> <p>b) The VPAs are in similar geographic conditions and, socio-economic status of the end-users. Cultural similarities</p>	<p><a href="https://www.droopbox.com/s/rcalwdr6h3xrd2b/FAO%20State%20of%20Worlds%20Forest%202014.pdf">https://www.droopbox.com/s/rcalwdr6h3xrd2b/FAO%20State%20of%20Worlds%20Forest%202014.pdf</a> Baseline survey report. End User Database.</p>
----------	--	---	---

		<p>exist and cooking habits/patterns too are same. Due to these reasons, the CME has applied baseline study conducted in March 2018 to this VPA.</p>	
9	<p>The use of the baseline technology as a backup or auxiliary technology in parallel with the improved technology introduced by the project activity is permitted as long as a mechanism is put into place to encourage the removal of the old technology (e.g. discounted price for the improved technology) and the definitive discontinuity of its use.</p>	<p>Vendors and IP staff strongly encourage end-users to remove old three-stone stoves during sales event and follow up visits. The monitoring plan and project survey will account for baseline stove usage. Objective Observer to confirm claims during site visits. Putting a mechanism in place, for example providing incentives for endusers to not use baseline proves to be expensive and ineffective on two fronts: a) Distributing Incentives, b) Monitoring whether old stoves are being not used in actual, and it is incredibly difficult to do spot checks among thousands of users which are spread widely from each other. The new FES is a value product and is available to the end-user at a highly subsidized price, which is one third of the actual cost, with easy payment plans, we also offer the same incentives when an HH wants to buy an additional stove and /or replacement (outside warranty period), and based on our observations and interactions with the end-users, they prefer cooking on FES, and only resort to using three stone fires when they have to cook for</p>	<p>The monitoring plan and project survey</p>

		<p>a larger audience (in case of festivals, gatherings, etc). This is a classic case where users themselves have realized the benefits and comfort of cooking on the new FES over the old baseline stove and does not require any further incentives for not using baseline stove. The PP wants to share that the baseline stove usage is a part of the annual monitoring exercise, however.</p>	
10	<p>Micro-scale VPA in Least Developed Country automatically additional. However, in case of retroactive registration, the justification must be provided.</p>	<p>Justification: The Myanmar Stoves Campaign is a project which directly improves the lives of the poor and under-served households in the rural regions of Myanmar and curbs down the environmental damage to a significant level by reducing the anthropogenic emissions of greenhouse gasses which would have not occurred without the project. The role of carbon finance was always considered right at the project design phase and is crucial to be able to highly subsidize the technology (fuel efficient stove) and cover the cost of distribution, operations and management for the project. The project model was designed right from the start after considering the carbon revenues, in the absence of which, this project would have not happened. The PP intends to use the carbon revenue in scaling up the project and</p>	<p>Myanmar falls under the LDC, which is the project region.</p>

		maximize the positive impact it generates.	
11	The VPA start date shall be after the PoA validation start date (21st December 2015).	Start date of stove distribution of this VPA is 01/08/2021. The stove distribution started on 01/08/2021 and finished on 30/10/2021.	End User database
12	The Implementation Partner has developed a monitoring plan agreed with the CME.	Monitoring plan developed and agreed between CME and IP.	Monitoring plan
13	All VPAs shall demonstrate that IPs have distributed FES to domestic households, communities, SMEs or institutions such as monasteries.	The location and type of every customer is collected via the FES Sale Agreement and recorded in the customer database. Target end users have been agreed between IP and CME and are documented in the Implementation Plan. This VPA includes households only.	End User database
14	All VPAs will meet one of the following conditions: a) will not receive any funding from Annex I parties, or b) will receive Annex I party funds that do not result in a diversion of ODA.	ODA declaration included Annex 2	ODA declaration
15	In accordance with GS Annex C, the activity needs to proof that end-users are aware of and willing to give up their rights on emission reductions.	Minutes of Local Stakeholder Consultation meeting provided later in the document. Carbon asset transfer agreement included in the sales agreement.	Sales agreement
16	The duration of the crediting period of each	5-year renewable crediting period. The final date for which ERs can be	VPA start date

<p>VPA to be included in the PoA shall not exceed the end date of the registered PoA. The start date of the crediting period of a VPA shall be on or after: a) the date of registration of the PoA if the corresponding VPA-DD is submitted together with the request for registration; or b) the date when the VPA was included in accordance with the Project cycle procedure.</p>	<p>credited shall be no later than 15 years after the date of registration of the PoA.</p>	
--	--	--

The CME and IP agree to work together with Objective Observers and Gold Standard Foundation staff to ensure that the project activity will contribute to the sustainable development in Myanmar.

**B.3. VPA boundary**

>>

The boundary of the proposed micro-scale VPA is determined by the location of the households where the FES are used but is limited to the area of The Republic of the Union of Myanmar. This VPA is to be implemented across several townships and villages in Magway, & Rakhine regions. More specifically this VPA is being developed in the project area of the Implementation Partner Mercy Corps highlighted below. The Total Sales Record gives information on the exact location of each stove, tracked by its serial number. Stoves will be allocated to the VPA during the annual verification without any double counting.

Source		GHGs	Included?	Justification/Explanation
Baseline scenario	Source 1	CO <sub>2</sub>	YES	Important source of emissions in the baseline scenario
		CH <sub>4</sub>	No	
		N <sub>2</sub> O	No	
	Source 2	CO <sub>2</sub>	No	-
		CH <sub>4</sub>	No	
		N <sub>2</sub> O	No	
Project scenario	Source 1	CO <sub>2</sub>	YES	Important source of emissions in the project scenario
		CH <sub>4</sub>	No	
		N <sub>2</sub> O	No	
	Source 2	CO <sub>2</sub>	No	-
		CH <sub>4</sub>	No	
		N <sub>2</sub> O	No	

**B.4. Establishment and description of baseline scenario**

>>

Soneva Foundation along with its implementation partners Mercy Corps Myanmar conducted a baseline study in March 2018. The objective of baseline survey was to establish the baseline conditions in the target area in Myanmar. Specifically, the survey aims to ensure compliance with methodology requirements set out by the Gold Standard Foundation. Data from a representative sample of 100 households was collected to provide information on the following items:

- Baseline cooking stove
- Baseline location of cooking stove
- Type of fuel used
- Consumption of baseline fuel per year
- Establish key variables to calculate wood consumption

The Project follows the Gold Standard Simplified Methodology for Efficient Cookstoves for the quantification of greenhouse gas emissions reductions achieved by the replacement stoves on an annual basis.

While the methodology states that the project proponent may use a default baseline biomass consumption value (Section 4.2 c -minimum per capita service level), the local

circumstances in Myanmar justify the adoption of the “survey of local usage” approach (Section 4.2 b) to determine the average wood consumption per household. Together with the stove efficiency this information allows to quantify emission reductions of the activity.

Therefore, the parameters required for monitoring as part of the Baseline Survey and Project Survey are:

- Quantity of firewood consumed per household
  - Wood consumption is measured in bull carts, so we needed to know the average weight of wood per bullcart and the amount of bullcarts needed per month
- Stove Type (Baseline and Project)
- Fuel Type (Baseline and Project)
- Other information gathered includes:
  - Average household size
  - Cooking location

The baseline survey revealed that on average each family consumes 4219 Kg of firewood per year.

The baseline survey report can be made available on request.

**B.5. Demonstration of additionality**

>>

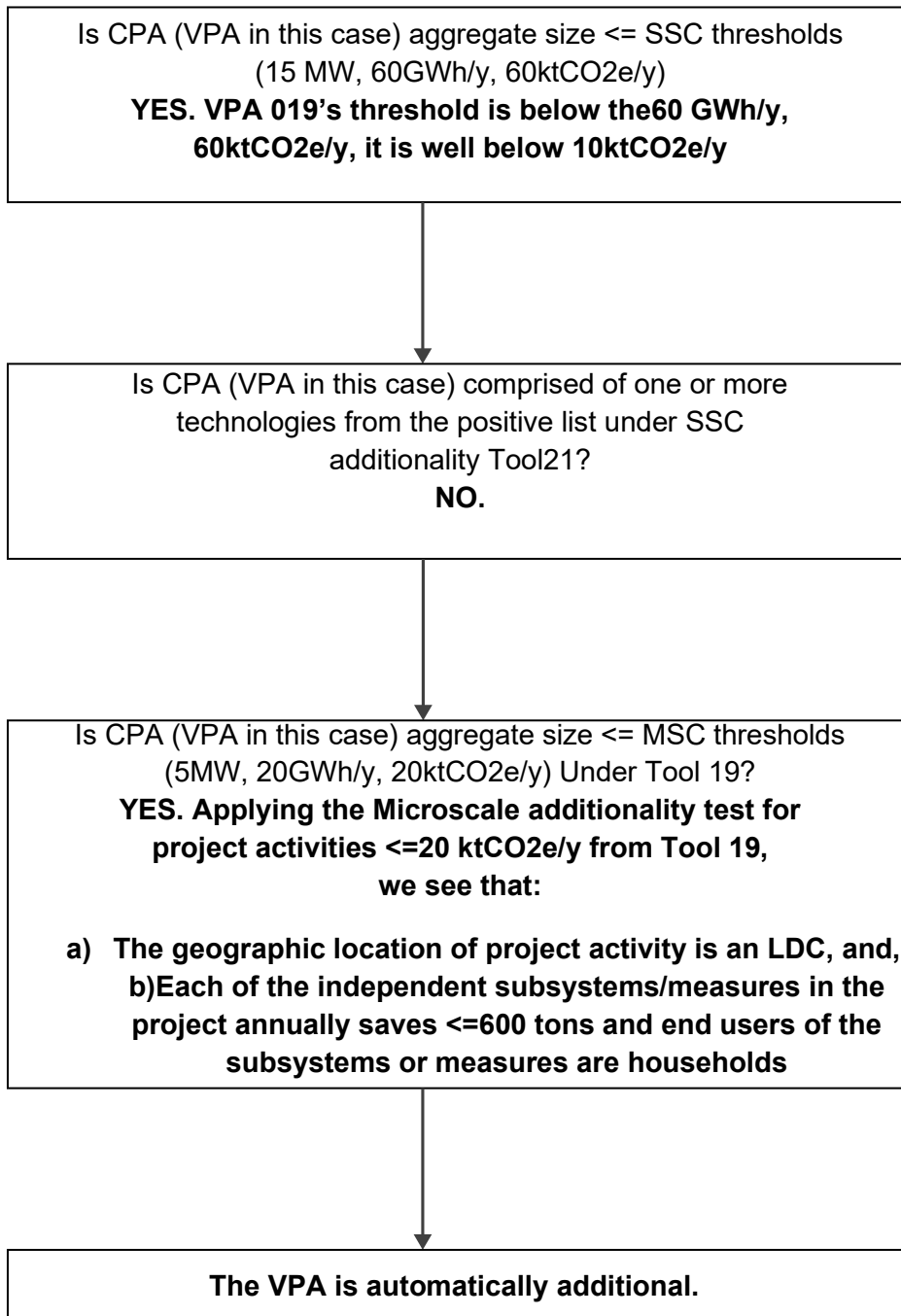
The table below is only applicable if the proposed project is deemed additional, as defined by the applied approved methodology or activity requirement or product requirement.

Specify the methodology, activity requirement or product requirement that establishes deemed additionality for the proposed project (including the version number and the specific paragraph, if applicable).	The Gold Standard Simplified Methodology for Efficient Cookstoves, Version 03,  COMMUNITY SERVICES ACTIVITY REQUIREMENTS, Version 1.2
---	---

<p>Describe how the proposed project meets the criteria for deemed additionality.</p>	<p>The assessment and demonstration of additionality for a typical VPA is determined at the PoA and activity level (see PoA-DD section D.5.2). Additionality at the activity level is demonstrated as Myanmar is a Least Developing Country (LDC). Independent of the LDC status of Myanmar, this programme would not have been possible without carbon finance. During the feasibility study, undertaken in June 2012, it was established that a cook stove project could be developed with the support of carbon finance. Considerable upfront operational and piloting expenses, as well as a significant amount of sensitization, awareness raising and product demonstration, are required to overcome the prevailing practice. A strategic investment was therefore only possible due to future income from carbon finance. At the current stage of The Myanmar Stoves Campaign, which directly improves the lives of the poor and under-served households in the rural regions of Myanmar and curbs down the environmental damage to a significant level by reducing the anthropogenic emissions of greenhouse gasses which would not have occurred without the project. The role of carbon finance here is crucial to be able to highly subsidize the technology (fuel efficient stove) and cover the cost of distribution, operations, and management for the project. The project model was designed right from the start after considering the carbon revenues, in the absence of which, this project would not have happened. The PP intends to use the carbon revenue in scaling up the project and maximize the positive impact it generates. In addition to this, No public funding was received or used for the VPA. No public funding will be used in the future for implementing the VPA.</p>
---	---

**Demonstration of Additionality – CDM Tool 21, v 12.0**

Adapted from Appendix: Provisions of Small-scale and Micro-scale tools for automatic additionality, Figure 1. Criteria for automatic additionality using provisions of small-scale (SSC) or micro-scale (MSC) additionality tools.



>>

B.5.1. Prior Consideration

>>

Not applicable.

B.5.2. Ongoing Financial Need

>>

Not applicable as this is only required at time of renewal of crediting period.

**B.6. Sustainable Development Goals (SDG) outcomes**

Relevant Target/Indicator for each of the three SDGs

Sustainable Development Goals Targeted	Most relevant SDG Target	SDG Impact  Indicator (Proposed or SDG Indicator)
SDG 3: Ensure healthy lives and promote well-being for all of all ages	By 2030, substantially reduce the number of deaths and illnesses from hazardous chemicals and air, water and soil pollution and contamination (Mortality rate attributed to household and ambient air pollution)	Number (Percentage) of households reporting the Improvement in the indoor air quality, and health and safety of the stove users during the annual monitoring surveys.
SDG 7: Ensure access to affordable, reliable, sustainable and modern energy for all	By 2030, expand infrastructure and upgrade technology for supplying modern and sustainable energy services for all in developing countries, in particular least developed countries, small island developing States and landlocked developing countries, in accordance with their respective programmes of support	Number of households served. (Facilitating access to fuel efficient cookstoves to the rural under-served households in the Republic of the Union of Myanmar, a LDC nation).
SDG 13: Take urgent action to combat climate change and its impacts	a) To reduce the GHG from the use of inefficient three stone fires and replacing them with Fuel Efficient Cookstoves. Improve education, awareness-raising and human and institutional capacity on climate change mitigation, adaptation, impact reduction and early warning	a) tCO <sub>2</sub> e (VERs) saved.  Number of: i) Village Level Awareness Raising Events and ii) Attendance

B.6.1. Explanation of methodological choices/approaches for estimating the SDG Impact

>>

SDG	Method
SDG 3: Ensure healthy lives and promote well-being for all at all ages	<p><u>Target:</u> By 2030, substantially reduce the number of deaths and illnesses from hazardous chemicals and air, water and soil pollution and contamination (Mortality rate attributed to household and ambient air pollution)</p> <p><u>Indicator:</u> Improvement in the indoor air quality, and health and safety of the stove users.</p> <p><u>Monitoring Plan:</u></p> <ul style="list-style-type: none"> <li>i)Method: Household Surveys, typical sample size as approved by methodology used, randomly selected.</li> <li>ii)Frequency: Annually QA/QC procedures: Transparent data collection, analysis and reporting.</li> <li>iii)Purpose: Aimed at gathering and analysing user feedback on improvement in Indoor Air Quality and sub-sequent health benefits (eg: improvements in irritation to eyes, breathing problems, other health and safety benefits). The FES has reported reductions in CO and PM emissions as compared to three stone fires by 82% and 70% respectively (Link), which contributes to the health and well-being by reduction of Indoor Air Pollution.</li> </ul> <p><u>Baseline and Project Calculations, &amp; Net Impact Equations:</u></p> <ul style="list-style-type: none"> <li>i)Baseline Calculations: In the baseline scenario, all of the households included in this VPA for crediting were using old three stone fires for cooking. Hence, all of them were exposed to the negative impact of indoor air pollution. The number of people affected by this can be calculated by number of credited stoves * average household size (= total number of people in this VPA)</li> <li>ii) Project Calculations: In the project scenario, all of the households included in this VPA for crediting use the fuel-efficient project stove and benefit from the reduction in indoor air pollution. The number of people positively</li> </ul>

	<p>impacted depends on the percentage of people agreeing on the indoor air being improved. The improvement in indoor air quality is recorded through surveys during the annual monitoring. iii) Net Impact Calculations: % of people agreeing on improvement in indoor air pollution * total number of people in the VPA * Usage Rate of that Monitoring Period. = total number of people impacted with improvement in indoor air quality.</p>
<p>SDG 7: Ensure access to affordable, reliable, sustainable and modern energy for all</p>	<p><u>Target:</u> By 2030, expand infrastructure and upgrade technology for supplying modern and sustainable energy services for all in developing countries, in particular least developed countries, small island developing States and landlocked developing countries, in accordance with their respective programmes of support <u>Indicator:</u> Number of households served. (Facilitating access to fuel efficient cookstoves to the rural under-served households in the Republic of the Union of Myanmar, a LDC nation). <u>Monitoring Plan:</u> i) Method: Ongoing data collection and storage. The Total Sales Record collects and maintains the total number of FES distributed in this VPA, from its start date to end date, which helps to estimate the number of lives this VPA has impacted. ii) Frequency: On-going iii)QA/QC procedures: Transparent data collection, analysis and reporting. iv)Purpose: To measure the number of households (and lives) impacted by access of a fuel-efficient cookstove.</p> <p><u>Baseline and Project Calculations, &amp; Net Impact Equations:</u> i) Baseline Calculations: In the baseline scenario, all of the households included in this VPA for crediting were using old three stone fires for cooking. ii) Project Calculations: From the End-user database, the total number of households using the fuel efficient cookstoves multiplied by the usage rate of that particular monitoring period in this VPA can be calculated. iii) Net Impact Calculations: The net impact calculation is equal to the project calculation. This is the number of households getting access to the fuel efficient cookstoves.</p>
<p>SDG 13: Take urgent action to combat climate change and its impacts</p>	<p><u>Target:</u> A) To reduce the GHG from the use of in-efficient three stone fires and replacing them with Fuel Efficient Cookstoves. <u>Indicator:</u> tCO2e (VERs) saved. <u>Monitoring:</u></p>

i) Method: Household Surveys, typical sample size as approved by methodology used, randomly selected.

ii) Frequency: Annually

iii) QA/QC procedures: Transparent data collection, analysis and reporting.

iv) Purpose: To measure the usage rate of project cookstoves, and usage of baseline stoves to be used in the emissions reduction calculation equation.

The Gold Standard Simplified Methodology for Efficient Cookstoves, Version 01, February 2013.

Baseline and Project Calculations, & Net Impact Equations:

i) Baseline Calculations: GHG emissions with the three stone fires based on annual average firewood consumption per household, the value of which is calculated via a fuel consumption survey. (Please refer to supporting document titled, 'VPA 019 - Myanmar Stoves Campaign - Baseline Survey Report - March 2018'.

ii) Project Calculations: Calculated as per the emissions reduction calculation equation given.

The Gold Standard Simplified Methodology for Efficient Cookstoves, Version 01, February 2013, by entering the ex-post variables of usage rate, and baseline stove usage in project scenario.

iii) Net Impact Calculations: Calculated as per the emissions reduction calculation equation given.

The Gold Standard Simplified Methodology for Efficient Cookstoves, Version 01, February 2013, by entering the ex-post variables of usage rate, and baseline stove usage in project scenario.

B) Improve education, awareness-raising and human and institutional capacity on climate change mitigation, adaptation, impact reduction and early warning Indicator: Number of:

i) Village Level Awareness Raising Events and

ii) Attendance

	<p><u>Monitoring Plan:</u></p> <p>i) Method: Ongoing data collection and storage. The Project Tracking File records the number awareness raising sessions conducted and the attendance in such meetings.</p> <p>ii) Frequency: On-going</p> <p>iii) QA/QC procedures: Transparent data collection, analysis and reporting.</p> <p>iv) Purpose: To measure the number of people made aware and sensitised about the issues of global warming, climate change, deforestation impacts and transitioning towards energy efficient choices in the target region.</p> <p><u>Baseline and Project Calculations, &amp; Net Impact Equations:</u></p> <p>i) Baseline Calculations: Prior to the start of the project in these areas, there were no such awareness raising sessions being organized. Hence the baseline calculations here are 0 people sensitized on environmental and climate change issues.</p> <p>ii) Project Calculations: During the start and end dates of the stove distribution in this VPA, several awareness raising sessions are organized attended by local participants. This data can be sourced from the project tracking file. Please refer to the supporting document titled. 'VPA 019 - Project Tracking File'</p> <p>iii) Net Impact Calculations: This is the actual number awareness raising sessions and participants attending it, as reported in the project calculations.</p>
--	--

B.6.2. Data and parameters fixed ex ante

**SDG13:** Take urgent action to combat climate change and its impacts

Data/parameter	<b>EF<sub>b, fuel, CO2</sub></b>
Unit	tCO <sub>2</sub> /t firewood
Description	CO <sub>2</sub> emission factor arising from the use of firewood in baseline scenario

Source of data	IPCC default values, table 1.4 of chapter 1 of Vol. 2, 2006 IPCC Guidelines for National Greenhouse Gas Inventories
Value(s) applied	1.747
Choice of data or Measurement methods and procedures	Deemed valid by GS VER Methodology
Purpose of data	To calculate VERs
Additional comment	Measuring emission factors from stove technologies is costly and difficult to do accurately. The CME applies default IPCC emission values.

Data/parameter	$EF_{b, \text{fuel, non\_CO2}}$
Unit	tCO <sub>2</sub> /t firewood
Description	Non CO <sub>2</sub> emission factor for use of firewood in baseline scenario
Source of data	IPCC default values, table 1.4 of chapter 1 of Vol. 2, 2006 IPCC Guidelines for National Greenhouse Gas Inventories
Value(s) applied	0.580
Choice of data or Measurement methods and procedures	Deemed valid by GS VER Methodology
Purpose of data	To calculate VERs
Additional comment	Measuring emission factors from stove technologies is costly and difficult to do accurately. The CME applies default IPCC emission values.

Data/parameter	$\eta_b$
Unit	Fraction
Description	Efficiency of the baseline system being replaced
Source of data	Methodology

Value(s) applied	10%
Choice of data or Measurement methods and procedures	Deemed valid by GS VER Methodology
Purpose of data	To calculate VERs
Additional comment	Measuring emission factors from stove technologies is costly and difficult to do accurately. The CME applies default IPCC emission values.

Data/parameter	$\eta_p$
Unit	Percent
Description	Efficiency of the cookstove <i>i</i> being used in the project scenario
Source of data	Manufacturer’s website > section on the specifications project stove Envirofit M5000 (SuperSaver GL) (Reference: Weblink)
Value(s) applied	29.7%
Choice of data or Measurement methods and procedures	The value is derived from Envirofit, the manufacturers of these stoves who issue these results after complying with all relevant test standards and procedures for the certification of their products.
Purpose of data	To calculate VERs
Additional comment	The project stove has been independently tested and is widely used in different countries.

Data/parameter	$f_{NRB, y}$
Unit	Fraction
Description	Calculated default values of fraction of non-renewable biomass for least developed countries and small island developing states
Source of data	SSC WG 35th meeting Report, Annex 20, Eq 3 FAO Forest Resource Assessment (FRA) 2015

	2006 IPCC Guidelines for National Greenhouse Gas Inventories, Chapter 4, Table 4.9 <a href="http://www.fao.org/docrep/004/Y1997E/y1997e21.htm">http://www.fao.org/docrep/004/Y1997E/y1997e21.htm</a>
Value(s) applied	0.8832
Choice of data or Measurement methods and procedures	SSC WG 35th meeting Report, Annex 20, Eq 3 FAO Forest Resource Assessment (FRA) 2015 2006 IPCC Guidelines for National Greenhouse Gas Inventories, Chapter 4, Table 4.9 <a href="http://www.fao.org/docrep/004/Y1997E/y1997e21.htm">http://www.fao.org/docrep/004/Y1997E/y1997e21.htm</a>
Purpose of data	To calculate VERs
Additional comment	The PP has this value endorsed by the local implementation partner, Mercy Corps

Data/parameter	<b>B<sub>b,y</sub></b>
Unit	t/hh/a (tons firewood per household per annum)
Description	Quantity of firewood consumed for cooking in baseline scenario during year y
Source of data	Baseline survey
Value(s) applied	4.219
Choice of data or Measurement methods and procedures	The value derived from ex-ante baseline surveys. Estimates for average annual fuel use will be derived from the project survey. Three main reasons for higher than usual fuelwood consumption: Most families own livestock, mainly pigs, chicken, and cows. A common feedstock is broken rice which is cooked together with other cereals in order to make it easier to digest for the animals. This habit adds another cooking session per day. Farmers are regularly visited by traders to negotiate purchases of harvested goods. During these visits families prepare food for guests, requiring additional cooking. During fieldwork, additional food is prepared for farmworkers.
Purpose of data	To calculate VERs
Additional comment	All data sources are transparent and verifiable. Refer to baseline survey report for details.

Data/parameter	<b>LE<sub>p,i,y</sub></b>
Unit	Fraction
Description	Leakage in project scenario p, for technology i, during year y
Source of data	Default value
Value(s) applied	0.95
Choice of data or Measurement methods and procedures	Deemed valid by GS VER Methodology
Purpose of data	To calculate VERs
Additional comment	Not Applicable

B.6.3. Ex ante estimation of SDG Impact

>>

Calculation of the emission reductions follows the Gold Standard Simplified Methodology for Efficient Cookstoves, section 4. The emissions reductions formula and description of parameters are shown below:

The emissions reductions formula and description of parameters are shown below.

$$ER_y = \sum_{0 \text{ to } 1}^{X \text{ to } Y} N_{p,y} * P_y * U_{p,y} * f_{NRB,y} * (EF_{b, \text{fuel}, CO_2} + EF_{b, \text{fuel}, \text{non\_CO}_2}) * (1 - DF_{b, \text{Stove}, y})$$

With,

The quantity of firewood that is saved estimated as follows: -

$$P_y = B_{b,y} * (1 - \frac{\eta_y}{\eta_{p,y}})$$

The efficiency of project cookstove in year y estimated as follows:

$$\eta_{p,y} = \eta_p * (DF_\eta)^{y-1} * 0.94$$

Where,

VPA 019- EX-ANTE CALCULATION OF EMISSION REDUCTIONS							
PARAMETER	UNIT	DESCRIPTION	2021	2022	2023	2024	2025
$N_{p,y}$	-	Number of project cookstoves of each age group operation in year y	1,786	1,786	1,786	1,786	1,786
$U_{p,y}$	%	Usage rate for project cookstove in year y, based on adoption rate and drop off rate as per usage surveys	100	100	100	100	100
$B_{b,y}$	t/hh/a	Quantity of firewood consumed in baseline scenario during year y	4.22	4.22	4.22	4.22	4.22
$\eta_b$	%	Efficiency of the baseline system being replaced	10	10	10	10	10
$\eta_{p,y}$	%	Efficiency of the system being deployed as part of the project activity	29.40	29.11	28.81	28.51	28.22
$P_y$	t/hh/a	Quantity of firewood that is saved in the year y	2.69	2.77	2.76	2.74	2.72
$\eta_p$	%	Efficiency of project cookstove (fraction) determined at the start of the project activity	29.7	29.7	29.7	29.7	29.7
$\eta_{p,y}$	%	Efficiency of the system being deployed as part of the project activity	27.64	27.36	27.08	26.80	26.52
$DF_n$	-	Discount factor to account for efficiency loss of project cookstove per year of operation (fraction)	0.99	0.98	0.97	0.96	0.95
$f_{NRB,y}$	-	Fraction of woody biomass saved by the project activity in period y that can be established as non-renewable biomass	0.88	0.88	0.88	0.88	0.88
$EF_{b, fuel, CO2}$	tCO <sub>2</sub> /tWood	CO <sub>2</sub> emission factor of firewood that is substituted or reduced	1.747	1.75	1.75	1.75	1.75
$EF_{b, fuel, non\_CO2}$	tCO <sub>2</sub> /tWood	Non-CO <sub>2</sub> emission factor of firewood that is substituted or reduced	0.580	0.58	0.58	0.58	0.58
$DF_{b, Stove, y}$	%	Usage of baseline cookstove during the year y in project scenario	2.25	2.25	2.25	2.25	2.25
	%	Percent of users who also use baseline cookstove	2.50	2.50	2.50	2.50	2.50
	%	Percent of meals prepared using baseline cookstove	0.90	0.90	0.90	0.90	0.90
x	-	y-1					
y	-	Year of the crediting period					
	t CO <sub>2</sub>	Emission reductions of the project activity in period y (Pre-Leakage)	9,955	9,903	9,850	9,795	9,740
	-	Leakage Discount Factor	0.95	0.95	0.95	0.95	0.95
<b>ER<sub>y</sub></b>	t CO <sub>2</sub>	<b>Emission reductions of the project activity in period y (max. 10,000)</b>	<b>9,458</b>	<b>9,408</b>	<b>9,357</b>	<b>9,305</b>	<b>9,253</b>

**Notes:**

- $N_{p,y}$  is an implied number of stoves to remain close to the 10,000 cap for micro-scale project activity.
- $U_{p, y}$  of 100% is based on the assumption
- $DF_{b, Stove, y}$  is based on assumption

B.6.4. Summary of ex ante estimates of each SDG outcome

SDG 3: Ensure healthy lives and promote well-being for all at all ages

This VPA alone serves 1,786 households in total. This VPA has improved the health and safety of around 8626 people due to the fuel-efficient cookstove. This is in line with the Target 3.9.1, which states to reduce the number of mortality rate attributed to household and ambient air pollution.

Year		Baseline estimate	Project estimate	Net benefit
30/10/2021	to	0 People	Around 8626 People	8626 people have improved health
29/10/2022				

				and safety impact due to FES
30/10/2022 29/10/2023	to	0 People	0 People	0 People
30/10/2023 29/10/2024	to	0 People	0 People	0 People
30/10/2024 29/10/2025	to	0 People	0 People	0 People
30/10/2025 29/10/2026	to	0 People	0 People	0 People
<b>Total</b>		<b>0 People</b>	<b>Around 8626 People</b>	<b>Around 8626 People</b>
<b>Total number of crediting years</b>		<b>0 People</b>	<b>Around 8626 People</b>	<b>Around 8626 People</b>
Annual average over the crediting period		0 People	Around 1725 people each year	Around 1725 people each year

SDG 7: Ensure access to affordable, reliable, sustainable and modern energy for all

This VPA has brought fuel-efficient cookstove, thus improving the energy efficiency for their cooking practices as compared to the old, three-stone fires, in line with the Target 7.3, which states, By 2030, double the global rate of improvement in energy efficiency. It also covers the Target 7.b, which focuses on bringing technology to LDCs. This VPA has facilitated access to FES for 1,786 households.

Year		Baseline estimate	Project estimate	Net benefit
30/10/2021 29/10/2022	to	0 Households	1,786 Households Served	1,786 households have improved health and safety impact due to FES

30/10/2022 29/10/2023	to	0 Households	0 Households	0 Households
30/10/2023 29/10/2024	to	0 Households	0 Households	0 Households
30/10/2024 29/10/2025	to	0 Households	0 Households	0 Households
30/10/2025 29/10/2026	to	0 Households	0 Households	0 Households
<b>Total</b>		<b>0 Households</b>	<b>1,786 Households</b>	<b>1,786 Households</b>
<b>Total number of crediting years</b>		<b>0 Households</b>	<b>1,786 Households</b>	<b>1,786 Households</b>
Annual average over the crediting period		0 Households	Around 357 households each year	Around 357 households each year

The project, as per Target 13.b.1, also uses the carbon finance to support technology and capacity building for mechanisms for raising capacities for effective climate change-related planning and management, including focusing on women, youth and local and marginalized communities. The VERs (First year) generated by this VPA are 9,357VERs. Over its life, the VPA is expected to result in producing the following VERs.

**B.7. Monitoring plan**

B.7.1. Data and parameters to be monitored

**SDG 13: Take urgent action to combat climate change and its impacts**

Data / Parameter	<b>U<sub>p,y</sub></b>
Unit	Percentage
Description	Usage rate for project cookstove in year y, based on adoption rate and drop off rate as per usage surveys
Source of data	Assumption
Value(s) applied	100%

Measurement methods and procedures	Household Surveys
Monitoring frequency	Annually
QA/QC procedures	A representative sample of project cookstove end-users will be selected for follow-up by the monitoring and evaluation team. A combination of household visits and phone calls to households will verify information in the distribution database and determine usage drop-off rates.
Purpose of data	To calculate VERs
Additional comment	<p><u>Sample Size:</u> The section 4.2 of methodology requires the minimum sample size to be taken as per the guidelines below:</p> <ul style="list-style-type: none"> <li>• Project target population &lt; 300: Minimum sample size 30</li> <li>• Project target population 300 to 1000: Minimum sample size 10% of group size</li> <li>• Project target population &gt; 1000 Minimum sample size 100</li> </ul> <p>Since, the population size under this VPA is greater than 1,000 FES, minimum of 100 FES user households will be drawn randomly from the VPA database. Care shall be taken to have proportionate representation of the FES installed under different batch.</p>

Data / Parameter	<b>N<sub>p,y</sub></b>
Unit	Number of project cookstoves credited (units)
Description	Cookstove in the project database for project scenario p through year y
Source of data	Total Sales Record
Value(s) applied	1786
Measurement methods and procedures	Sale Record Entries
Monitoring frequency	Continuous
QA/QC procedures	Transparent data analysis and reporting
Purpose of data	To calculate VERs
Additional comment	The total sales record is divided based on project scenario to create the project database

Data / Parameter	<b>DF<sub>n</sub></b>
Unit	Fraction
Description	Discount factor to account for efficiency loss n of project cookstoves
Source of data	Fixed default value from the methodology
Value(s) applied	0.99 i.e., 1% efficiency loss per year
Measurement methods and procedures	As per methodology
Monitoring frequency	Annually
QA/QC procedures	Transparent data analysis and reporting
Purpose of data	To calculate VERs
Additional comment	-

Data / Parameter	<b>DF<sub>p, Stove, y</sub></b>
Unit	Fraction
Description	Discount factor to account for usage of baseline cookstove during the year y in project scenario p
Source of data	Project survey
Value(s) applied	2.25%
Measurement methods and procedures	Household survey
Monitoring frequency	Annual
QA/QC procedures	Transparent data analysis and reporting
Purpose of data	To calculate VERs
Additional comment	The discount factor for baseline-stove use may be determined based on a number of meals cooked using the baseline stove. The required information shall be captured through sample surveys carried out following a random sampling approach for each age-group of the project stove. The minimum number of sample sizes shall be selected following the guidelines provided in section 4.2, option (b) of the POA-DD.

**SDG Indicators Monitoring Plan**

**SDG 3: Ensure healthy lives and promote well-being for all at all ages**

Data / Parameter	Improvement in the indoor air quality, and health and safety of the stove users
------------------	---

Unit	%
Description	Qualitative feedback from the stove users
Source of data	Project survey
Value(s) applied	100% (estimated)
Measurement methods and procedures	Household survey
Monitoring frequency	Annual
QA/QC procedures	Transparent data collection, analysis and reporting
Purpose of data	Aimed at gathering and analysing user feedback on improvement in Indoor Air Quality and sub-sequent health benefits (eg: improvements in irritation to eyes, breathing problems, other health and safety benefits). The FES has reported reductions in CO and PM emissions as compared to three stone fires by 82% and 70% respectively (Link), which contributes to the health and well-being by reduction of Indoor Air Pollution.
Additional comment	-

**SDG 7: Ensure access to affordable, reliable, sustainable and modern energy for all**

Data / Parameter	Number of households served
Unit	Number
Description	Total households and lives impacted
Source of data	Ongoing data collection and storage.
Value(s) applied	1,786 in this VPA eligible for crediting
Measurement methods and procedures	Ongoing, Project User Database. The Total Sales Record collects and maintains the total number of FES distributed in this VPA, from its start date to end date, which helps to estimate the number of lives this VPA has impacted.
Monitoring frequency	Annual
QA/QC procedures	Transparent data collection, analysis and reporting
Purpose of data	To measure the number of households (and lives) impacted by access of a fuel efficient cookstove.
Additional comment	-

**SDG 13: Take urgent action to combat climate change and its impacts**

Data / Parameter	Number of: i) Village Level Awareness Raising Events and ii) Attendance
------------------	---

Unit	Number
Description	Local awareness and sensitisation over climate/deforestation issues
Source of data	The Project Tracking File records the number awareness raising sessions conducted and the attendance in such meetings
Value(s) applied	-
Measurement methods and procedures	Ongoing, Project Tracking File
Monitoring frequency	Annual
QA/QC procedures	Transparent data collection, analysis and reporting
Purpose of data	To measure the number of people made aware and sensitised about the issues of global warming, climate change, deforestation impacts and transitioning towards energy efficient choices in the target region.
Additional comment	-

**Safeguarding Principles Assessment (SPA) Monitoring**

**Safeguarding Principle 1 – Human Rights**

Data / Parameter	Non-violation of Human rights and abuses of any kind
Unit	Incidents
Description	Qualitative feedback from the stove users/sale agents, and other local stakeholders
Source of data	Project survey
Value(s) applied	0% (estimated)
Measurement methods and procedures	Discussions with users and sale agents during households’ surveys conducted by the PD, and during the objective observer/external assessor visit.
Monitoring frequency	Annual
QA/QC procedures	Transparent data collection, analysis and reporting
Purpose of data	To ensure internationally proclaimed human rights for everyone associated with this project.
Additional comment	-

**Safeguarding Principle 4 - Cultural heritage, Indigenous Peoples, Displacement and Resettlement**

Data / Parameter	Project in sites, structures, or objects with historical, cultural, artistic, traditional or religious values or intangible forms of culture
Unit	Number
Description	Project being implemented in the above-mentioned site(s)
Source of data	Local input/records of such sites of importance
Value(s) applied	-
Measurement methods and procedures	On-going evaluation of such sites
Monitoring frequency	On-going
QA/QC procedures	Transparent data collection, analysis and reporting
Purpose of data	To ensure the project does not negatively impact these kinds of special sites/structures.
Additional comment	-

**Safeguarding Principle 6 - Economic Impacts**

Data / Parameter	No forced labour
Unit	%
Description	Any sale agents/other labour being forcefully employed by the project
Source of data	Project surveys
Value(s) applied	-
Measurement methods and procedures	Discussions with sale agents during household’s surveys conducted by the PD, and during the objective observer/external assessor visit.
Monitoring frequency	Annual
QA/QC procedures	Transparent data collection, analysis and reporting
Purpose of data	To ensure there is no forced labour of any kind with the project.
Additional comment	-

B.7.2. Sampling plan

>>

Monitoring shall consist of checking of a representative sample, once every year (annually) to ensure that project cookstoves are still operating by carrying out the usage survey as per the guidelines set out in the methodology. Annual surveys for monitoring: Usage Survey to establish the drop-off rates in technology usage from year-1 sales and other vintages. For example, if only cookstoves in the first year of use (age0-1) are being credited, a usage parameter must be established for age-group 0-1, through a usage survey for cookstove age0-1. If cookstoves of age 0-1 and age 1-2 are being credited (as part of the first request for issuance), usage parameters must be established for age-group 0-1 and 1-2, respectively through a usage survey. If cookstoves of age-group 0-1 and 1-2 are being credited (as part of the second request for issuance), usage parameters must be established for age-group 1-2 only through a usage survey as the usage rate for cookstoves of age group 0-1 can be applied from the previous issuance.

Following is the list of parameters which has been calculated / measured via sampling:

Up,y	Usage rate in project scenario p during year y (%)
DFb,stove,y	Discount Factor to account for baseline stove use (%)

Monitoring Survey to reassess household kitchen regimes. CME and/or Implementation Partner will randomly sample households from the sales agreements received. Sampling will be representative of geographic regions and technology used. Where replacements are made, monitoring shall also ensure that the efficiency of the new cookstove is similar to the appliances being replaced. The project must also monitor the use of baseline stoves in the project activity and any seasonal variation. Finally, the project must also monitor the physical conditions of the cookstoves. Monitoring shall include a site visit by the Objective Observer.

### B.7.3. Other elements of monitoring plan

>>

The methodology is designed to match the project conditions. As described in the above section, fuel-efficient cooking stoves using wood are included as applicable technologies and measures that reduce consumption of non-renewable biomass or other greenhouse emitting fuels. Monitoring will be conducted according to the prescribed approach in the methodology and as detailed below.

**The monitoring methodology is supported by:**

- Sales receipts
- Total Sales Record (Project Tracking File)
- Detailed Customer Database,
- Project Database, which is maintained continuously,

**Maintenance of a Total Sales Record**

The Project Proponent collates and maintains the total sales data in electronic and paper format.

**The Total Sales Record will comprise the following data:**

- Date of Sale
- Model/type of project technology sold:
- Serial/ID number of the device
- Name and telephone number (if available) of end-users
- Application of device (type of end use: Commercial/Domestic)
- Address/ Location of end-users

**The Sales Record information is collected using the following methods:**

For the portable fuel-efficient stoves, the local entrepreneurs sell stoves directly to end-users and record sales and user training continuously. This data is then collated into a detailed Total Sales Record that tracks the chain of transactions between the user and the distributors. The data received by the project implementation partners in paper format will be converted and saved electronically for monitoring and analysis purposes. A mechanism, designed jointly between the CME and the implementing partner, is agreed and put in place to accurately track sales, inventories, supply, and purchases for every stove distributed. For assuring accuracy and consistency, the Total Sales Record will be cross-checked with import data, usage and other relevant data. The names and telephone numbers or name and addresses collected must be commensurate with representative sampling, i.e. the names and addresses or phone numbers (where possible) within sales record shall be large enough so that surveys can be based on representative, randomly selected samples.

**Project Database**

The project database is derived from the Total Sales Record with project cookstoves differentiated by different project scenarios. The differentiation of the project database into sections is based on the results of the applicable monitoring studies for each project scenario, in order that emission reduction calculations can be conducted appropriately section by section. This data is collected, recorded, saved and archived electronically with the project developer in spreadsheets, and can be made available for review, as and when required.

## SECTION C. DURATION AND CREDITING PERIOD

### **C.1. Duration of project**

#### C.1.1. Start date of VPA

>>

The start date of this VPA is 01/08/2021 (Evidence: Sales Agreement)

#### C.1.2. Expected operational lifetime of VPA

>>

5 Years, renewable twice The expected lifetime of the stoves is up to 7 years<sup>6</sup>, we consider 5 years for this project. Post this period, the stove users would be given similar incentives and access to buy new cookstoves. This is expected to continue till the two renewable periods of the project, after the first 5-year phase.

### **C.2. Crediting period of project**

#### C.2.1. Start date of crediting period

>>

30/10/2021

#### C.2.2. Total length of crediting period

>>

Crediting period – 30/10/2021 – 29/10/2026 (5 years).

The crediting period may be renewed twice in line with the Community Services Activity Requirements.

---

<sup>6</sup> <http://envirofit.org/product/cookstoves/supersaver-gl-wood/>

## SECTION D. SUMMARY OF SAFEGUARDING PRINCIPLES AND GENDER SENSITIVE ASSESSMENT

### D.1. Safeguarding Principles that will be monitored

A completed Safeguarding Principles Assessment is in [Appendix 1](#), ongoing monitoring is summarised below.

Principles	Mitigation Measures added to the Monitoring Plan
Safeguarding Principle 1 - Human Rights	The Project Developer ensures that these principles are strictly followed by the implementation partners, sale agents and other relevant stakeholders. The PD also encourages third party/objective observers to assess the implementation of this principle.
Safeguarding Principle 2- Gender Equality and Womens Rights	Not Applicable
Safeguarding Principle 3- Community Health, Safety and Working Conditions	Not Applicable
Safeguarding Principle 4 - Cultural heritage, Indigenous Peoples, Displacement and Resettlement	So far, the project has not come across the mentioned site, and it is highly unlikely that this project (cookstoves) will ever alter/damage sites of historical importance. The PD will ensure, that if the scaling up of this project includes the mentioned site and there is a potential of any kind of risk, a site-specific risk mapping and mitigation plan would be developed involving the local community.
Safeguarding Principle 5 - Corruption	Not Applicable
Safeguarding Principle 6-	The Project Developer ensures that these principles are strictly followed by the implementation partners and other relevant

<p>Economic Impacts</p>	<p>stakeholders. Periodic review and assessment to adherence to this principle shall be conducted by the PD. One of the methods to check this is through interviews/focus group discussions with the sales agents/other staff during the annual monitoring period. The PD also encourages third party/objective observers to assess the implementation of this principle.</p>
-------------------------	---

**D.2. Assessment that project complies with GS4GG Gender Sensitive requirements**

<p>Question 1 - Explain how the project reflects the key issues and requirements of Gender Sensitive design and implementation as outlined in the Gender Policy?</p>	<p>The local stakeholder consultation meeting will be carried out following a gender sensitive approach. The VPA refers to raising awareness and consideration of gender norms, roles and relations but do not necessarily address inequality generated by unequal norms, roles, and relations through remedial action beyond creating gender awareness. The project also includes compliance with the gender 'do no harm' safeguard, gender-gap analysis and gender sensitive stakeholder consultation.</p>
<p>Question 2 - Explain how the project aligns with existing country policies, strategies and best practices</p>	<p>Myanmar is party to "Convention on the Elimination of All Forms of Discrimination against Women" and the project has aligned its policies which does not discriminate on gender.</p>
<p>Question 3 - Is an Expert required for the Gender Safeguarding Principles &amp; Requirements?</p>	<p>The project does not employ any personnel based on gender, race, religion, sexual orientation or any other basis.</p> <p>The Project was not designed to increase women's workload nor add care responsibilities.</p> <p>The Project does not limit women's ability regarding natural resources. The project being clean cooking project thus does not have any major impact on natural resources of the region. The</p>

	<p>Project does not expose women and girls to further risks or hazards.</p> <p>The project proponent has a grievance cell which would look into complaints. The Project does not restrict women’s rights or access regarding natural resources.</p>
<p>Question 4 - Is an Expert required to assist with Gender issues at the Stakeholder Consultation?</p>	<p>Yes, the project applies the stakeholder-related procedures. From the GS Stakeholder guidelines, section 1.4 "In developing a Project, taking gender issues into account require that local stakeholder consultation processes reach a wide range of community representatives in ways that ensure equal and effective participation of women and men in consultation, and that gender issues are fully factored into comprehensive social and environmental impact assessments." The Local Stakeholder Consultation Meeting had an overall healthy participation from women in the meeting. The meeting was held on not to interfere with the regular schedule of the week. It was held during the day, as women tend to circulate more freely and safely than after sunset. All the villagers were invited for the consultation through invitation. The meeting was conducted in local language.</p>

## SECTION E. SUMMARY OF LOCAL STAKEHOLDER CONSULTATION

The below is a summary of the 2 step GS4GG Consultation for monitoring purposes. Please refer to the separate Stakeholder Consultation Report for a complete report on the initial consultation and stakeholder feedback round.

### **E.1. Summary of stakeholder mitigation measures**

>>

There was no separate LSC conducted for the VPA019. The results from the Local Stakeholder Consultation conducted from VPA 017 are applied to VPA 019, as the project implementation is in the neighbouring regions, where the target population have similar socio-economic conditions and fuel usage patterns.

The local stakeholder consultation consisted of a physical meeting in the Mone Taung Village, which served as a convenient meeting point for all the relevant local stakeholders from the region this project currently focusses on. The project proponent ensures these consultations have adequate representations from all relevant local groups such as from end users, sale agents, local administrative officers and the representation from Forest Department under the Ministry of Natural Resources & Environmental Conservation.

The meeting was held in the first half of 30<sup>th</sup> May 2019 in Mone Taung Village, which lies in Magway of the Dry Zone region. The broader agenda for this meeting was to involve and gather feedback/support from the above-mentioned stakeholders for the project to grow and reach new townships and villages.

This meeting was kept in a village to ensure the specific target group finds it easy to attend it. The meetings consisted of presentations by the CME (Soneva Foundation) and Mercy Corps. The project participants were introduced, an overview of climate change, carbon finance mechanism, project implementation and it's benefit, and grievance mechanisms were discussed. The meeting was highly interactive, giving clarity to the attendees on all relevant aspects of the project and getting their feedback on the same.

The invitations for the meeting were sent out through phone calls, hand-delivered invitations, and through the local village development council heads. Project non-technical summary and agenda in the local language were provided. Detailed meeting notes and pictures are included in the following sections of the document.







ဤမူဝါဒအားချမှတ်မိမိဖိုသည့် မာစီဝေကာ(ချမှတ်)မှ အိမ်ထောင်စုများသို့/ အသက်ရှင်ဆုံးရှုံးသောဝမ်းနိုးမှုများဖြင့် တိုက်ရိုက် ချမှတ်/ပျံ့နှံ့ရေးဆောင်ရွက်မည့် ဖြစ်ပွားမှုများဖြစ်သော ဤမူဝါဒအားချမှတ်မိမိဖိုသည့် ကာပြုပြန်ရေးကွဲး တွဲး ဝေလ်ာ်းခိုငံ့ချမှတ်ရေးဆောင်ရွက်မှု ကာပြုပြန်ရေးကွဲး ဝေထာကွဲးကို ထပ်မံရရှိမည့်ဖြစ်ပွားမှု။ အဆိုပါ ဝေထာကွဲးမအကြံကု စီမံခန့်ခွဲမှု Gold Standard အဖြစ်မှ ကာပြုပြန်ရေးကွဲး အမှုကွဲးယုဝေလ်ာ်းခိုငံ့ ရှိ/မရှိအား ကာပြုပြန်ရေးကွဲးလ်ာ်းခိုငံ့ မဟာဏတိုင်းအကြံကု အတည့်ပုံမည့်ဖြစ်ပွားမှု။ အဆိုပါကာပြုပြန်ရေးကွဲးမှ ရရှိလာသော ဝငံ့ငြေချမှတ်မှု အဆိုပါ ဤမူဝါဒအားချမှတ်မိမိဖိုသည့် ဝမ်းနိုးမှုသက္ကရာဇ်ဖြင့် ချမှတ် ဆက်ကု ချမှတ်/ပျံ့နှံ့ရေးဆောင်ရွက်မည့်ဖြစ်ပွားမှု။

**အဖွဲ့ဝင်**

ချမှတ်ရေးကွဲးအားချမှတ်မိမိဖိုစီမံခန့်ခွဲသည့် ချမှတ်ရေးကွဲးဝင်စွဲကွဲးပုံစံဖိတိုးတက်မှုအကြံကု အေးပေးသော အခန်းကွဲးမှ လုပ်ဆောင်ရေးဆောင်ရွက် စီမံခန့်ခွဲရေးဖြစ်ပွားမှု။ စီမံခန့်ခွဲရေး ဝေလ်ာ်းခိုငံ့ပျံ့နှံ့ရေး၏ အသက်ရှင်ရေးဝမ်းနိုးမှုအဆိုငှ အေးချမ်းအနမ်းကို တိုးတက်ရေးစေမည့်ဖြစ်ပွားမှု ငှတို/အား အခွင့်အလမ်းကွဲးကွဲးဝေလ်ာ်းခိုငံ့ သံ့ဝမ်းဖြည့်မိသားစုများ၏ က်နိုးမာရေးအား အထောက်အကူဖြစ်စေသော နည်းပညာအား အသံ့ဝမ်းချမ်းပျော်ဖြင့် ရရှိမည့်ဖြစ်ပွားမှု။

**ဆက်လက်ရေး**

ချမှတ်ရေးကွဲးအားချမှတ်မိမိဖိုစီမံခန့်ခွဲရေးဝင်စွဲကွဲးပုံစံဖိတိုးတက်မှု အေးသီးစိတ္တိလိုပါက ဝေအာကွဲးလိမ္မာမ်းသို့/ စာပို/ချမှတ်ရေးကွဲး ဝေမေးချမှတ်ရေးဝင်စွဲကွဲးပုံစံဖြစ်ပွားမှု။

- Mr. Arnfinn Oines, Secretary- Soneva Foundaiton  
အကြံကွဲးရေးမှူး ၊ ဆိုနိုဗား ဝေဖာငံ့ဝေဒ်းရှင်း။  
[arnfinn@soneva.com](mailto:arnfinn@soneva.com)  
Soneva Foundation, 19/F Two Pacific Place, 142 Sukhumvit Rd., Bangkok 10110, Thailand  
(<http://sonevafoundation.org/>)
- ဝေဒုတိယဖိဖိဝေဝ  
အသက်ရှင်ရေးစီမံခန့်ခွဲရေး မန်နေဂျာ  
[pwai@mercycorps.org](mailto:pwai@mercycorps.org)  
အမွတ် ၉၇၊ (၅) လင်းတ၊ Rangoun Business Center ၊ အောက်ကွဲးရေးကွဲးဝင်စွဲကွဲး၊ ဗဟန်းစာပိုဗိမာန်၊ ရန်ကွဲးမိပီ။

The Invitation Letters + Non-Technical Summary along with the Agenda text shared in English are as follows:

Invitation Letter/Email Text + Non-Technical Summary

To,

ADDRESS

Dear \_\_\_\_\_

Sub: Invitation to Local Stakeholder Consultation for Project Activity [Soneva in Myanmar – VPA 015]

The Myanmar Stoves Campaign (Gold Standard Micro Programme)

Mercy Corps Myanmar and the Soneva Foundation would like to invite you to take part in the stakeholder consultation meeting of the project activity "Soneva in Myanmar – VPA 015".

The project activity aims to replace inefficient traditional stoves (three stone fires) with highly efficient cook stoves, thereby reducing families' wood consumption and Greenhouse Gas emissions. The project is going to take place in Mone Taung village.

The project activity seeks inclusion in the Gold Standard Micro Programme to enable it to receive so called "carbon credits", a financial remuneration for the emission reductions it achieves. This mechanism allows beneficiaries of this project to purchase fuel efficient cook stoves at a price that is affordable to them. This project not only achieves the goal of reducing GHG emissions and curbing de-forestation in Myanmar but also brings health benefits and time savings to families while supporting the sustainable development of the country.

In order to register this project activity with the Gold Standard Foundation, this stakeholder consultation process is being organised to ensure stakeholder comments are taken into account. We therefore would like to invite you to participate in the local stakeholder consultation meeting which will be held at Mone Taung village, at 1000 Hrs on 30<sup>th</sup> May 2019.

We look forward to your valuable participation during the meeting and ask that you confirm your attendance. Should you be unable to attend in person we invite you to send us your comments and questions via email to the following addresses [arnfinn@soneva.com](mailto:arnfinn@soneva.com)/[pwai@mercycorps.org](mailto:pwai@mercycorps.org). A non-technical summary of the project activity and the meeting agenda are attached to this invitation.

Sincerely,  
Ms. Phyo Wai

Agenda

<b>Time</b>	<b>Agenda item</b>
10.00 am – 10.15 am	Registration
10.15 am – 10.30 am	Opening of the meeting
10.30 am – 11.30 am	Explanation of the project + Questions & Answers
11.30 am – 12.00 am	Sustainable Development Exercise
12.00 am – 12.15 pm	Discussion on monitoring sustainable development
12.15 pm – 12.30 pm	Discussion on Continuous Input/Grievance Mechanism
12.30 pm – 01.00 pm	Closure of the meeting / Completion of evaluation forms & Lunch

Non-Technical Summary

### Description of Project

The Myanmar Stoves Campaign aims to distribute fuel efficient cook-stoves to over one million people in Myanmar. The project development is led by the Soneva Foundation in partnership with Mercy Corps and aims to be implemented in rural communities located in ecologically sensitive areas throughout Myanmar.

The cook-stoves used in this project are considerably more fuel efficient than the rudimentary stoves and traditional three-stone fires being used presently. This increased efficiency results in families consuming less firewood to perform their daily household activities and, in the process, substantially reduce the money spent on firewood. Efficient stoves also produce less smoke and lower indoor air pollution will have positive health impacts.

The Myanmar Stoves Campaign has already distributed more than 27,000 fuel efficient cook-stoves in Pyawbwe township and is increasing its outreach in the dry zone and will reach other parts of the country as the project expands.

### Project Proponent & Participants

The Soneva Foundation is a not-for-profit organisation that aims to deliver meaningful projects that have a positive environmental, social and economic impact. The U.K. registered charity has led several high impact projects in the areas of forest restoration, safe drinking water and basic sanitation services, children's care & malnutrition and clean energy access initiatives.

Mercy Corps, a globally renowned NGO, is the project implementation partner and responsible for day-to-day project implementation activities. It has established a strong presence in Myanmar and is playing a decisive role in various community betterment programs all over the country.

### The Need of the Project

Soneva Foundation had sponsored a four-week field trip in 2012 to assess the project feasibility in Myanmar. This feasibility study was conducted in the Dry zone and Delta Region of the country and involved 40 detailed one-to-one household interviews, meetings with 13 NGO's, and town hall meetings in 16 different villages which addressed more than 200 households. The household energy survey concluded that the vast majority of the rural population in Myanmar uses wood as a source of household fuel. The households which cannot collect their own firewood have the only option of buying wood from the vendors.



Wood prices in many rural parts of Myanmar have doubled over the last two years and families can spend up to 50% of their income on firewood. This rapid rise in prices is a function of the dramatic depletion in Myanmar's forests and mangroves in recent years and fuel costs are now a substantial

economic burden for many families.

This led to the start of Myanmar Stoves Campaign and since 2012, the project has positively impacted the lives of more than 100,000 people. This significant & visible positive change in the lives of the people has encouraged all stakeholders to scale up this project and share its benefits to more under-served households in the region/country.

*The Envirofit Supersaver GL used in this project is replacing the old three-stone fires.*



*This stove reduces the wood consumption up to 66 % and Carbon Di-oxide emissions up to 66 %*

### The Project Impact

The Myanmar Stoves Campaign supports sustainable economic and environmental development in Myanmar through the introduction of modern technology. From an

environmental perspective, the use of efficient cook-stoves will reduce the amount of firewood each family burns, lowering carbon emissions and leading to reduced deforestation.

Due to the efficient combustion of wood, less smoke is produced which has a direct positive impact on health of women and children who spend many hours indoors while meals are prepared.

Efficient cook-stoves reduce fuel consumption and families need to spend less time collecting wood and save money as they purchase less wood. As a result, families have greater disposable income and more time for productive activities.

The Myanmar Stoves Project will create local jobs in the distribution and maintenance of the stoves.

### Gold Standard carbon project

The fuel-efficient cook-stoves will be distributed by Mercy Corps and sold directly to households at a highly subsidised price. The subsidy will be met through carbon finance as the use of the stoves will result in reductions in carbon emissions which will qualify for carbon credits. The project will be registered with the Gold Standard Foundation which will issue verified emission reduction credits to the project for each ton of CO<sub>2</sub> emissions saved. Income generated from the sale of these credits will be used to fund the subsidised distribution of the stoves.

### Conclusion

The Myanmar Stoves Campaign is making an important contribution to sustainable development in Myanmar. The project will improve the livelihoods of disadvantaged rural communities and allow them to gain access to an enabling technology that saves them time and money, and which contributes to improved family health.

### Additional Information

Additional information regarding the Myanmar Stoves Campaign can be obtained from:

Mr. Arnfinn Oines  
Secretary – Soneva Foundation  
[arnfinn@soneva.com](mailto:arnfinn@soneva.com)

Soneva Foundation, 19/F Two Pacific Place, 142 Sukhumvit Rd., Bangkok 10110, Thailand (<http://sonevafoundation.org/>)

The LSC meeting included all the participants filling out a general evaluation form and a form for Sustainability Development Assessment Exercise. The Evaluation forms filled by participants are part of SCR.

**LSC meeting general evaluation form**

The general evaluation form consisted of 3 questions:

- What is your impression of the meeting?
- What do you like about the project?
- What do you not like about the project?

The general feedback of local stakeholders towards to proposed project was very positive.

The completed evaluation forms from the meeting translated into English are provided below:

No.	Name	Impression of the Meeting	What did you like about the project?	What did you not like about the project?
1.	U Kyaw Soe Linn	Good	It is good for reducing deforestation and save environmental conservation.	Using the new cookstove may need some initial practise.
2.	U Thaung Htay	Good	He liked all activities which are implementing in communities by Mercy Corps.	The price is reasonable. If possible, SA should sell the stoves on consignment in 4 times. So the sell rate will be increased.
3.	Daw Lwin Mar Htike	She has received knowledge from this meeting.	She liked that it is good for reducing deforestation.	She feels that the project is good for them.
4.	U Thaw Gyi	Good	He liked all activities which are implementing in	The price is reasonable. If possible, SA should sell the stoves on

			communities by Mercy Corps.	consignment in 4 times. So the sell rate will be increased.
5.	U Zaw Wai Htun	He has received knowledge from this meeting.	He liked that the stove reduces fire wood and harmful smokes.	No
6.	U Hla Ohm	Good	He liked all activities which are implementing in communities by Mercy Corps.	No
7.	U Myint Swe	Good	He liked that the stove reduces deforestation and harmful smokes.	No
8.	U Win Aung	Good	He liked that the stove reduces deforestation and save environmental conservation.	No
9.	Ko Kyaw Zaw Win	Good	He liked that the stove reduces deforestation and save environmental conservation.	No
10.	Ma Aye Aye Maw	Good	She liked that the stove reduces fire wood and deforestation.	No
11.	U Soe Kyi	Good	He liked that there is very good objective as it is to save our earth.	No

12.	U Than Soe	Good	He liked that the stove save the time and money.	The price is reasonable. But still limited using the stoves by communities.
13.	Daw Yin Ngwe Soe	Good	She liked that the stove reduces deforestation, carbon emission and eye irritation.	No
14.	Daw Hnin Yu Khaing	Good	She liked that the stove reduces fire wood and harmful smoke.	No
15.	Ma Aye Aye Khaing	She has received knowledge from this meeting.	She liked that the stove reduces fire wood and harmful smoke.	No
16.	Daw Saw Thein	She feels that she has received knowledge from this meeting.	She liked that the stove reduces fire wood, save the time and money and it is one of Climate Change Mitigation Project.	No
17.	Daw Hnin Kyi	Good	She feels that the stove is comfortable for cooking.	No
18.	Ma Tin Yu	Good	She feels that it is good for our environment.	No
19.	Daw San San	Good	She liked that the stove reduces fire	No

			wood and save the time.	
20.	Ma Win Win Ngwe	Good	She liked that the stove save environmental conservation.	No
21.	Daw Chaw Su Phyu	Good	She liked that the stove save environmental conservation, bio diversity and it is one of climate change mitigation project.	No
22.	Daw Aye Nu	Good	She liked that the stove save environmental conservation.	No
23.	Aye Moe Moe San	Good	She liked that the stove save environmental conservation.	The price can be a bit lower
24.	Daw Hla Oo	Good	She liked that the stove save environmental conservation.	No
25.	Daw Ohm Hla	Good	She liked that the stove save environmental conservation.	No
26.	U Mya Han	Good	He liked the stove.	The price can be a bit lower
27.	Daw Hnin Yu Khaing	Good	She liked that the stove save	No

			environmental conservation.	
28.	Daw Mya Sein	Good	She liked that the stove save environmental conservation.	No
29.	Daw Thein Nyewt	Good	She liked that the stove save environmental conservation and as well as the stove.	No
30.	Daw Cho	Good	She liked that the stove save environmental conservation and as well as the stove.	No
31.	Daw San Win	Good	She liked that the stove save environmental conservation and as well as the stove.	No
32.	U Mya Saung	He feels that he has received knowledge from this meeting.	He liked that the stove save environmental conservation.	No
33.	U Khin Maung Nyewt	Good	He liked that the stove save the time and money.	No
34.	U Kyi Soe	Good	He liked that the stove save fire wood, time and money.	If possible, stove should be bigger than now for big families.
35.	U Win Paing	Good	He liked that the stove save the time and money.	No

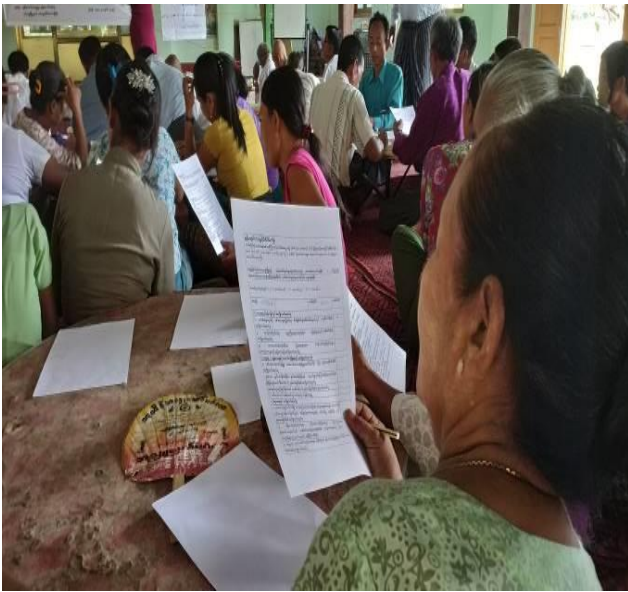
36.	U San Linn Aung	Good	He liked all activities which are implementing in communities by Mercy Corps.	No
37.	U Aung Myint Thein	Good	He liked that the stove save environmental conservation.	No
38.	Daw Tin Kyaing	Good	She liked the stove.	No
39.	Daw San Yu Wai	Good	She liked that the stove save environmental conservation and as well as the stove.	No
40.	Ma Win Mar	Good	She liked the stove.	No
41.	Ma Nu Nu	Good	She liked all activities which are implementing in communities by Mercy Corps.	No
42.	Ma Zar Zar Aung	Good	She liked all activities which are implementing in communities by Mercy Corps.	No
43.	Daw Yin Nu	Good	She liked that the stove save fire wood and time.	If possible, stove should be bigger than now for big families.
44.	U San Maw	Good	He liked all activities which are implementing in communities by Mercy Corps.	No

45.	Ma Khin Htay	Good	She liked that the stove save environmental conservation and It is easy to cook.	No
46.	U Tin Ohm	Good	He liked that the stove save environmental conservation and It is easy to cook.	No
47.	Ma Zin Mar	Good	She liked that the stove save fire wood, time and money.	No

Below are scanned copies of general evaluation forms and the ones used during sustainability development assessment exercise at the Thay Pyay Thar (West) village meeting.

Pictures of the meetings





Minutes of physical meetings

:

1. Welcome and Introductions

Phyo Wai from Mercy Corps welcomes all participants and fills the participant list

All the participant groups and the presenters were introduced to each other, following explaining the agenda, flow, and methodology of the meeting.

## 2. Presentations

### Soneva Foundation

Bhushan Trivedi, from the Soneva Foundation, introduced and explain about the organization, the Myanmar Stoves Campaign project and it's environmental (and other) benefits. He also explained the working of carbon finance mechanism and how the project contributes towards preventing carbon emissions from reducing the burning of firewood for cooking. He also covered how the proceeds from the sale of carbon revenues are crucial in making the stoves affordable at a highly subsidized price for the end-user and covering the operational and management costs for the project.

### Mercy Corps

Phyo Phyo Wai from Mercy Corps discussed all the aspects of the project implementation and ensured the session is interactive. This helped the audience understand the project in much detail.

### Sustainable Development Assessment Exercise

Bhushan Trivedi, from Soneva Foundation, led the sustainable development assessment exercise with all the participants, who were given out an evaluation form during the meeting. The evaluation form consisted of three main impact areas: 1) Environmental, 2) Social + Health & Safety Impact, and 3) Economic Impact. Each of these areas had indicators on which the participants assessed the net project impact on with positive (+), neutral (0), and a negative impact with (-). These questions were being taken up one by one and discussed. It was found out that the participants in an overwhelming majority, agreed that the net impact of the project is positive.

### Grievance mechanism

The continuous input and grievance mechanism was explained to the participants by Bhushan Trivedi from Soneva Foundation. Inputs and feedback were taken by the participants on the most effective mechanism, and it was decided that the users should contact the stove vendors and/or Mercy Corps directly in case of any

grievances or inputs towards the project. Mercy Corps maintains a register for this and updates Soneva Foundation on regular basis. The local staff and local vendors play a crucial link successful implementation of the mechanism.

### General Evaluation Forms

At the end of the meeting, the participants were requested to fill in the general evaluation forms, the results, of which are provided in the previous section of this document.

### 5. Questions and Answers

The questions asked during the meeting are as follows:

<b>Name:</b> Daw Saw Thein
<b>Question:</b> Recommendation – She likes the project stove and its features and feels that if the installment duration is increased, there would be an increase in uptake.
<b>Response:</b> Thank you for the suggestion. This matter can be decided on case to case basis between the sale agent and the stove buyer. At the moment, the project design is done in a way it provides easy installments to a majority of the users in the project region. However, if the duration is to be increased, this can be between the sale agent and end user’s understanding.

<b>Name:</b> U Kyi Soe
<b>Question:</b> Can the stove price be further reduced for the users?
<b>Response:</b> The stove is currently heavily subsidized for the end-user, but to make it more easily affordable for everyone, Soneva Foundation will initiate conversation with micro-finance organizations and explore some partnership models where there could be an easy and much relaxed installment payment scheme for the users.

<b>Name:</b> Daw Aye Aye Khaing
<b>Question:</b> Is it possible to get a bigger stove?
<b>Response:</b> Currently our project only offers this one model which is Envirofit SuperSavel GL. There has not been enough demand for big size stoves and the

current size has been very popular with the masses. If in future there is enough demand generation, we may look into options of importing a bigger size stove.

<b>Name:</b> Group Question
<b>Feedback:</b> How does the carbon emissions saved from this stove gets measured.
<b>Response:</b> There are approved methodologies by the Gold Standard, which has equations and guidance to calculate the carbon emissions saved from each stove. We collect the values of the parameters from you on a regular and annual basis to be used in those equations and perform the measurements.

**E.2. Final continuous input / grievance mechanism**

Method	Include all details of Chosen Method (s) so that they may be understood and, where relevant, used by readers.
Continuous Input / Grievance Expression Process Book (mandatory)	Register maintained at local Mercy Corps at Magway office
GS Contact (mandatory)	<a href="mailto:help@goldstandard.org" style="color: #00A69A;">help@goldstandard.org</a>
Other (Email)	<p><b>CME:</b> <a href="mailto:arnfinn@soneva.com" style="color: #00A69A;">arnfinn@soneva.com</a></p> <p><b>IP:</b> <a href="mailto:Pwai@mercycorps.org" style="color: #00A69A;">Pwai@mercycorps.org</a></p>

## SECTION F. Eligibility and inclusion criteria for VPAs inclusion

>>

The below table shall be completed for all VPAs.

The CME shall provide clear description on how eligibility criteria set at real case VPAs are complied with for each real case and regular VPAs submitted for inclusion.

The CME shall not change the eligibility criteria and required condition set at real case VPAs. At the time of inclusion of regular VPAs, the CME shall only describe how the regular VPAs comply with the eligibility criterion.

No.	Eligibility Criterion	Description/ Required condition	Description of the VPA in relation to the criteria, Means of Verification and Supporting evidence for inclusion
1	Biomass fueled cookstove fit for local conditions and preferences.	Envirofit M-5000 (SuperSaver GL) has been tested in various villages in the target location and was voted by the community as the preferred technology.	Results of product tests are summarized in the Field Test Report available upon request.
2	Efficiency levels sufficiently high to make a considerable impact.	Fuel savings 66%; CO <sub>2</sub> savings 66% CO savings 82% PM reduction 70% <sup>7</sup>	<a href="http://envirofit.org/product/cookstoves/supersaver-gl-wood/">http://envirofit.org/product/cookstoves/supersaver-gl-wood/</a>
3	Expected product life	Up to 7 years	<a href="http://envirofit.org/product/cookstoves/supersaver-gl-wood/">http://envirofit.org/product/cookstoves/supersaver-gl-wood/</a>
4	The VPA is located within a defined geographic boundary within the borders of a single host country as per A.4.1.2. of the PoA Design Document. townships/villages in/around	End-users mostly from the villages of several Rakhine/Magway region included in this VPA Rakhine: 20.1444° N, 92.8969° E Magway: 20.1544° N, 94.9455° E	End User Database

<sup>7</sup> <http://envirofit.org/product/cookstoves/supersaver-gl-wood/>

5	All VPAs must include a means of uniquely identifying distributed FES and customers. This mechanism will identify stoves as belonging to this PoA and not any other, ensuring there is no double counting.	This VPA will not be part of another single CDM project of GS project activity or VPA under another PoA. IP confirmation received. Each stove comes with a unique serial number which is fastened on the stove body. This serial number is used to enter the master database and track the stove user and location in the Total Sales Record. This serial number-based identification also helps with avoiding double counting. Serial Number Plate at the rear of the stove. The project host country in the Republic of the Union of Myanmar, which does not have any cap enforced and there is no risk of any double-counting. Furthermore: i) The location is a Non-Annex B party without binding targets as per the Kyoto protocol. ii) Myanmar does not have an international commitment that includes the potential for trade of emissions with other countries. iii) Myanmar does not include for a regulated, domestic level emissions trading scheme or carbon tax that accounts for the Scope of the Gold Standard Activity (Ref: <a href="https://icapcarbonaction.com/en/">https://icapcarbonaction.com/en/</a> )	Each FES distributed under the VPA can be traced by its unique serial numbers and is recorded in the Total Sales Record (End User Database).
6	The annual emissions reductions of the VPA shall not exceed 10ktCO <sub>2</sub> e/year over the entire crediting period <sup>8</sup>	Estimated emissions reductions of the cookstoves included in this VPA do not exceed 10,000. If a VPA exceeds the applicable limit in any year, the emission reduction claimed shall be capped at 10,000 tCO <sub>2</sub> .	ER calculation sheet
7	Each VPA-DD shall demonstrate that firewood is the primary fuel used by the target population of the project activity.	92% of households surveyed use firewood as fuel	Baseline survey report. End User Database.
8	Each VPA shall demonstrate that the	Around 86% of the households use the rudimentary Three Stone Stoves in the region.	<a href="https://www.dropbox.com/s/rca1wdr6h3xrd2b/FAO%20St">https://www.dropbox.com/s/rca1wdr6h3xrd2b/FAO%20St</a>

<sup>8</sup> <https://globalgoals.goldstandard.org/101-par-principles-requirements/>

	<p>baseline stove is a three stone fire or a conventional device without a grate or a chimney.</p>	<p>5% use Concrete, and 1% found to be using an Iron Stove, however, both categories use firewood as a fuel. Only 8% of the household was found to be using Charcoal Stoves. 4 As mentioned in the PoA-DD, according to the FAO between 80-100% of Myanmar’s population relies on wood for cooking (Ref: Weblink). Soneva Foundation along with the implementation partners, Mercy Corps Myanmar conducted a baseline survey in March 2018 in the dry zone region villages which had villages similar in this VPA on the socio-economic status and fuel consumption patterns. The report presents a finding that in the central Dry Zone, 92% of households use firewood for cooking. The most commonly used cookstove is the three-stone fire or a three-stand, and in few some cases, A1 or concrete/charcoal stoves. The baseline survey is representative of households in rural areas.</p> <p>In case of VPA 019</p> <p>a) These VPA include households only and not any other user groups.</p> <p>b) The VPAs are in similar geographic conditions and, socio-economic status of the end-users. Cultural similarities exist and cooking habits/patterns too are same. Due to these reasons, the CME has applied baseline study conducted in March 2018 to this VPA.</p>	<p><a href="#">ate%20of%20Worlds%20For est%202014.pdf</a></p> <p>Baseline survey report. End User Database.</p>
9	<p>The use of the baseline technology as a backup or auxiliary technology in parallel with the improved technology introduced by the project activity is permitted as long as a mechanism is put into place to encourage the removal of the old technology (e.g. discounted price for</p>	<p>Vendors and IP staff strongly encourage end-users to remove old three-stone stoves during sales event and follow up visits. The monitoring plan and project survey will account for baseline stove usage. Objective Observer to confirm claims during site visits. Putting a mechanism in place, for example providing incentives for endusers to not use baseline proves to be expensive and ineffective on two fronts: a) Distributing Incentives, b) Monitoring whether old stoves are being not used in actual, and it is incredibly difficult to do spot</p>	<p>The monitoring plan and project survey</p>

	<p>the improved technology) and the definitive discontinuity of its use.</p>	<p>checks among thousands of users which are spread widely from each other. The new FES is a value product and is available to the end-user at a highly subsidized price with easy payment plans, we also offer the same incentives when an HH wants to buy an additional stove and /or replacement (outside warranty period), and based on our observations and interactions with the end-users, they prefer cooking on FES, and only resort to using three stone fires when they have to cook for a larger audience (in case of festivals, gatherings, etc.). This is a classic case where users themselves have realized the benefits and comfort of cooking on the new FES over the old baseline stove and does not require any further incentives for not using baseline stove. The PP wants to share that the baseline stove usage is a part of the annual monitoring exercise, however.</p>	
10	<p>Micro-scale VPA in Least Developed Country automatically additional. However, in case of retroactive registration, the justification must be provided.</p>	<p>Justification: The Myanmar Stoves Campaign is a project which directly improves the lives of the poor and under-served households in the rural regions of Myanmar and curbs down the environmental damage to a significant level by reducing the anthropogenic emissions of greenhouse gasses which would have not occurred without the project. The role of carbon finance was always considered right at the project design phase and is crucial to be able to highly subsidize the technology (fuel efficient stove) and cover the cost of distribution, operations and management for the project. The project model was designed right from the start after considering the carbon revenues, in the absence of which, this project would have not happened. The PP intends to use the carbon revenue in scaling up the project and maximize the positive impact it generates.</p>	<p>Myanmar falls under the LDC, which is the project region.</p>
11	<p>The VPA start date shall be after the PoA</p>	<p>Start date of stove distribution of this VPA is 01/08/2021. The stove distribution started on 01/08/2021 and finished on 30/10/2021.</p>	<p>End User database</p>

	validation start date (21st December 2015).		
12	The Implementation Partner has developed a monitoring plan agreed with the CME.	Monitoring plan developed and agreed between CME and IP.	Monitoring plan
13	All VPAs shall demonstrate that IPs have distributed FES to domestic households, communities, SMEs or institutions such as monasteries.	The location and type of every customer is collected via the FES Sale Agreement and recorded in the customer database. Target end users have been agreed between IP and CME and are documented in the Implementation Plan. This VPA includes households only.	End User database
14	All VPAs will meet one of the following conditions: a) will not receive any funding from Annex I parties, or b) will receive Annex I party funds that do not result in a diversion of ODA.	ODA declaration included Annex 2	ODA declaration
15	In accordance with GS Annex C, the activity needs to prove that end-users are aware of and willing to give up their rights on emission reductions.	Minutes of Local Stakeholder Consultation meeting provided later in the document. Carbon asset transfer agreement included in the sales agreement.	Sales agreement
16	The duration of the crediting period of each VPA to be included in the PoA shall not exceed the end date of the registered PoA. The start date of the crediting period of a VPA shall be on or after: a) the date of registration of the PoA if the corresponding VPA-DD is submitted together with the request for registration;	5-year renewable crediting period. The final date for which ERs can be credited shall be no later than 15 years after the date of registration of the PoA.	VPA start date

	or b) the date when the VPA was included in accordance with the Project cycle procedure.		
--	--	--	--

## APPENDIX 1 - SAFEGUARDING PRINCIPLES ASSESSMENT

Complete the Assessment below and copy all Mitigation Measures for each Principle into [SECTION D](#) above. Please refer to the instructions in the [Guide to Completing](#) this Form below.

Assessment Questions/ Requirements	Justification of Relevance (Yes/potentially/no)		
<b>Principle 1. Human Rights</b>			
<p>1. The Project Developer and the Project shall respect internationally proclaimed human rights and shall not be complicit in violence or human rights abuses of any kind as defined in the Universal Declaration of Human Rights</p> <p>2. The Project shall not discriminate with regards to participation and inclusion</p>	No	<p>The project activity is on a voluntary basis; villagers are not forced to join. The project generates only inhouse activity. This doesn't affect any cultural property, and uniqueness of indigenous people. No human right abuse has been observed.</p> <p style="text-align: center;">Not Applicable</p>	<p>The Project Developer ensures that these principles are strictly followed by the implementation partners, sale agents and other relevant stakeholders. The PD also encourages third party/objective observers to assess the implementation of this principle.</p> <p style="text-align: center;">Not Applicable</p>
<b>Principle 2. Gender Equality</b>			



workers and the community			
<b>Principle 4.1 Sites of Cultural and Historical Heritage</b>			
Does the Project Area include sites, structures, or objects with historical, cultural, artistic, traditional or religious values or intangible forms of culture?	No	The project, when scales up, may include the mentioned sites, but in no condition will it alter, damage or remove these objects, structures, etc.	So far, the project has not come across the mentioned site, and it is highly unlikely that this project (cookstoves) will ever alter/damage sites of historical importance. The PD will ensure, that if the scaling up of this project includes the mentioned site and there is a potential of any kind of risk, a site-specific risk mapping and mitigation plan would be developed involving the local community.
>>			
<b>Principle 4.2 Forced Eviction and Displacement</b>			
Does the Project require or cause the physical or economic relocation of peoples (temporary or permanent, full or partial)?	No	Not Applicable	Not Applicable
>>			
<b>Principle 4.3 Land Tenure and Other Rights</b>			

<p>a. Does the Project require any change, or have any uncertainties related to land tenure arrangements and/or access rights, usage rights or land ownership?</p> <p>b. For Projects involving land use tenure, are there any uncertainties with regards to land tenure, access rights, usage rights or land ownership?</p>	<p>No</p> <p>No</p>	<p>Not Applicable</p>	<p>Not Applicable</p>
<p>&gt;&gt;</p>			
<p><b>Principle 4.4 Indigenous People</b></p>			
<p>a. Are indigenous peoples present in or within the area of influence of the Project and/or is the Project located on land/territory claimed by indigenous peoples?</p>	<p>No</p>	<p>Indigenous peoples are present in the project area, who are the beneficiaries of the project. Every effort is taken to respect their collective rights and are provided with equitable sharing of benefits derived from this project design.</p>	<p>Not Applicable</p>
<p>&gt;&gt;</p>			
<p><b>Principle 5. Corruption</b></p>			

<p>1. The Project shall not involve, be complicit in or inadvertently contribute to or reinforce corruption or corrupt Projects</p>	<p>No</p>	<p>Not Applicable</p>	<p>Not Applicable</p>
<p><b>Principle 6.1 Labour Rights</b></p>			
<p>1. The Project Developer shall ensure that all employment is in compliance with national labour occupational health and safety laws and with the principles and standards embodied in the ILO fundamental conventions</p> <p>2. Workers shall be able to establish and join labour organisations</p> <p>3. Working agreements with all individual workers shall be documented and implemented and include:</p> <p>a) Working hours (must not exceed 48 hours</p>	<p>No</p>	<p>Myanmar ratified the following relevant treaties and convention. C182 - Worst Forms of Child Labour Convention, 1999 (No. 182) ILO convention 29 on Forced labor (1930)</p> <p>There is no restriction on freedom of association and right to collective bargaining. The project staff, retailers, and vendors are not forced to join the project. Vendors are getting involved in this project by their own choices and motivation. The recruitment and training process is designed keeping the local</p>	<p>The Project Developer ensures that these principles are strictly followed by the implementation partners and other relevant stakeholders. Periodic review and assessment to adherence to this principle shall be conducted by the PD. One of the methods to check this is through interviews/focus group discussions with the sales agents/other staff during the annual monitoring period. The PD also encourages third party/objective observers to assess the implementation of this principle.</p>

<p>per week on a regular basis), AND</p> <p>b) Duties and tasks, AND</p> <p>c) Remuneration (must include provision for payment of overtime), AND</p> <p>d) Modalities on health insurance, AND</p> <p>e) Modalities on termination of the contract with provision for voluntary resignation by employee, AND</p> <p>f) Provision for annual leave of not less than 10 days per year, not including sick and casual leave.</p> <p>4. No child labour is allowed (Exceptions for children working on their families' property requires an <a href="#">Expert Stakeholder</a> opinion)</p> <p>5. The Project Developer shall ensure the use of</p>		<p>cultural nuances into consideration. The engagement is documented. No child labor is employed. All employees/vendors are adults.</p>	
--	--	---	--

<p>appropriate equipment, training of workers, documentation and reporting of accidents and incidents, and emergency preparedness and response measures</p>			
<p><b>Principle 6.2 Negative Economic Consequences</b></p>			
<p>1. Does the project cause negative economic consequences during and after project implementation?</p>	<p>No</p>	<p>The project design ensures financial sustainability by a combination of revenue sources (majorly from carbon credit sales and revenue from stove sales). It is expected that as the users have already benefited the economic savings by using the fuel efficient stoves, majority of them would purchase these again even after the certification period. The project does not possess any threat to the local economy, instead it catalyses several aspects relating to it's growth (eg., monetary savings on fuel, job creation, etc)</p>	<p>Not Applicable</p>
<p>&gt;&gt;</p>			

<b>Principle 7.1 Emissions</b>			
Will the Project increase greenhouse gas emissions over the Baseline Scenario?	No	No. On the contrary, Due to avoidance of fossil fuel combustion, these emissions will be reduced in parallel to reduced CO2.	Not Applicable
>>			
<b>Principle 7.2 Energy Supply</b>			
Will the Project use energy from a local grid or power supply (i.e., not connected to a national or regional grid) or fuel resource (such as wood, biomass) that provides for other local users?	No	N/A	N/A
>>			
<b>Principle 8.1 Impact on Natural Water Patterns/Flows</b>			
Will the Project affect the natural or pre-existing pattern of watercourses, ground-water and/or the watershed(s) such as high seasonal flow variability, flooding potential, lack of aquatic connectivity or water scarcity?	No	N/A	N/A
>>			

<b>Principle 8.2 Erosion and/or Water Body Instability</b>			
Could the Project directly or indirectly cause additional erosion and/or water body instability or disrupt the natural pattern of erosion?	No	N/A	N/A
>>			
<b>Principle 9.1 Landscape Modification and Soil</b>			
Does the Project involve the use of land and soil for production of crops or other products?	No	N/A	N/A
>>			
<b>Principle 9.2 Vulnerability to Natural Disaster</b>			
Will the Project be susceptible to or lead to increased vulnerability to wind, earthquakes, subsidence, landslides, erosion, flooding, drought or other extreme climatic conditions?	No	N/A	N/A
>>			
<b>Principle 9.3 Genetic Resources</b>			

Could the Project be negatively impacted by or involve genetically modified organisms or GMOs (e.g., contamination, collection and/or harvesting, commercial development, or take place in facilities or farms that include GMOs in their processes and production)?	No	N/A	N/A
>>			
<b>Principle 9.4 Release of pollutants</b>			
Could the Project potentially result in the release of pollutants to the environment?	No	N/A	N/A
>>			
<b>Principle 9.5 Hazardous and Non-hazardous Waste</b>			
Will the Project involve the manufacture, trade, release, and/ or use of hazardous and non-hazardous chemicals and/or materials?	No	N/A	N/A
>>			
<b>Principle 9.6 Pesticides &amp; Fertilisers</b>			

Will the Project involve the application of pesticides and/or fertilisers?	No	N/A	N/A
>>			
<b>Principle 9.7 Harvesting of Forests</b>			
Will the Project involve the harvesting of forests?	No	N/A	N/A
>>			
<b>Principle 9.8 Food</b>			
Does the Project modify the quantity or nutritional quality of food available such as through crop regime alteration or export or economic incentives?	No	N/A	N/A
>>			
<b>Principle 9.9 Animal husbandry</b>			
Will the Project involve animal husbandry?	No	N/A	N/A
>>			
<b>Principle 9.10 High Conservation Value Areas and Critical Habitats</b>			
Does the Project physically affect or alter largely intact or High Conservation Value (HCV)	No	N/A	N/A

ecosystems, critical habitats, landscapes, key biodiversity areas or sites identified?			
>>			
<b>Principle 9.11 Endangered Species</b>			
Are there any endangered species identified as potentially being present within the Project boundary (including those that may route through the area)?  AND/OR  Does the Project potentially impact other areas where endangered species may be present through transboundary affects?	No	N/A	N/A
>>			

## APPENDIX 2- CONTACT INFORMATION OF VPA IMPLEMENTER

Organization name	Soneva Foundations
Registration number with relevant authority	
Street/P.O. Box	142 Sukhumvit Rd.
Building	19/F Two Pacific Place
City	Bangkok
State/Region	
Postcode	10110
Country	Thailand
Telephone	
E-mail	
Website	<a href="http://www.sonevafoundation.org/">http://www.sonevafoundation.org/</a>
Contact person	Mr. Arnfinn Oines
Title	Secretary
Salutation	
Last name	Oines
Middle name	
First name	Arnfinn
Department	
Mobile	+66 89 667 2346
Direct tel.	+66 (0) 2631 9698
Personal e-mail	<a href="mailto:arnfinn@soneva.com">arnfinn@soneva.com</a>

Organization name	Mercy Corps Myanmar
Registration number with relevant authority	
Street/P.O. Box	97/A, 4th to 5th Flr, Shwe Gon Daing Rd
Building	Rangoun Business Center
City	Yangon
State/Region	
Postcode	
Country	Myanmar
Telephone	01-8603041
E-mail	
Website	<a href="http://www.mercycrops.org">www.mercycrops.org</a>
Contact person	Mr. Leo Roozendaal
Title	Country Director
Salutation	
Last name	Roozendaal
Middle name	
First name	Leo
Department	
Mobile	+66 89 667 2346
Direct tel.	+66 (0) 2631 9698
Personal e-mail	<a href="mailto:lroozendaal@mercycorps.org">lroozendaal@mercycorps.org</a>

## APPENDIX 3- LUF ADDITIONAL INFORMATION

Risk of change to the Project Area during Project Certification Period:	
Risk of change to the Project activities during Project Certification Period:	
Land-use history and current status of Project Area:	
Socio-Economic history:	
Forest management applied (past and future)	
Forest characteristics (including main tree species planted)	
Main social impacts (risks and benefits)	
Main environmental impacts (risks and benefits)	
Financial structure	
Infrastructure (roads/houses etc):	
Water bodies:	
Sites with special significance for indigenous people and local communities - resulting from the Stakeholder Consultation:	
Where indigenous people and local communities are situated:	
Where indigenous people and local communities have legal rights, customary rights or sites with special cultural, ecological, economic, religious or spiritual significance:	

## APPENDIX 4-SUMMARY OF APPROVED DESIGN CHANGES

Please refer to [Design Changes Requirements](#) for more information on procedures governing Design Changes

## Revision History

Version	Date	Remarks
2.0	4 May 2022	
1.1	7 October 2020	<p>Hyperlinked section summary to enable quick access to key sections</p> <p>Improved clarity on Key Project Information</p> <p>Inclusion criteria table added</p> <p>Gender sensitive requirements added</p> <p>Prior consideration (1 yr rule) and Ongoing Financial Need added</p> <p>Safeguard Principles Assessment as annex and a new section to include applicable safeguards for clarity</p> <p>Improved Clarity on SDG contribution/SDG Impact term used throughout</p> <p>Clarity on Stakeholder Consultation information required</p> <p>Provision of an <a href="#">accompanying Guide</a> to help the user understand detailed rules and requirements</p>
1.0	10 July 2017	Initial adoption