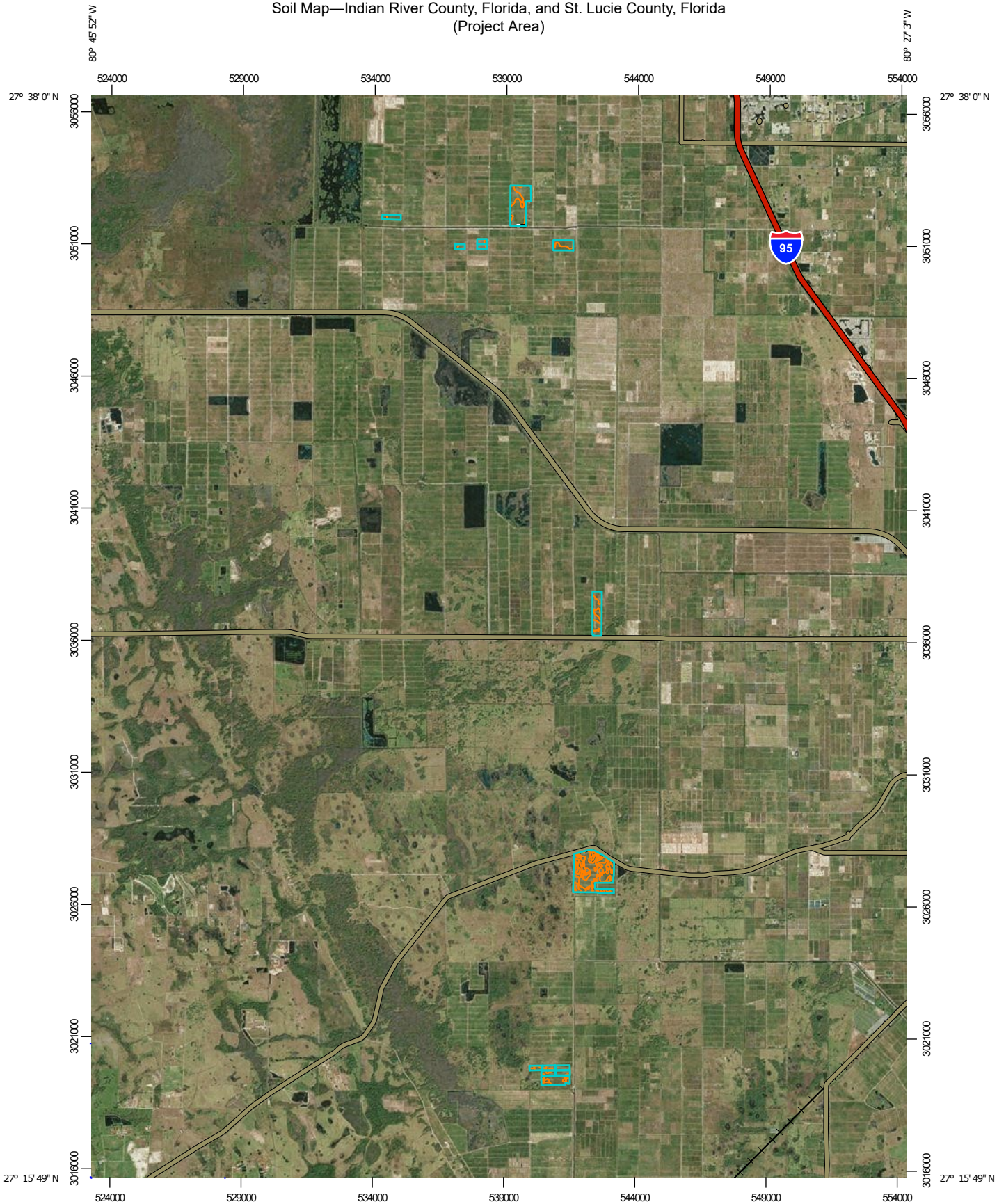
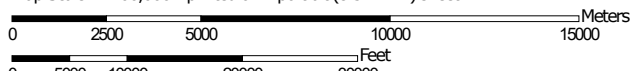


Soil Map—Indian River County, Florida, and St. Lucie County, Florida
(Project Area)



Map Scale: 1:200,000 if printed on A portrait (8.5" x 11") sheet.



Map projection: Web Mercator Corner coordinates: WGS84 Edge tics: UTM Zone 17N WGS84



Natural Resources
Conservation Service


Web Soil Survey
National Cooperative Soil Survey

12/29/2021
Page 1 of 3


Soil Map—Indian River County, Florida, and St. Lucie County, Florida
(Project Area)


MAP LEGEND

Area of Interest (AOI)

 Area of Interest (AOI)

Soils

 Soil Map Unit Polygons

 Soil Map Unit Lines

 Soil Map Unit Points

Special Point Features



Blowout



Borrow Pit



Clay Spot



Closed Depression



Gravel Pit



Gravelly Spot



Landfill



Lava Flow



Marsh or swamp



Mine or Quarry



Miscellaneous Water



Perennial Water



Rock Outcrop



Saline Spot



Sandy Spot



Severely Eroded Spot



Sinkhole



Slide or Slip



Sodic Spot



Spoil Area



Stony Spot



Very Stony Spot



Wet Spot



Other



Special Line Features

Water Features



Streams and Canals

Transportation



Rails



Interstate Highways



US Routes



Major Roads



Local Roads

Background



Aerial Photography

MAP INFORMATION

The soil surveys that comprise your AOI were mapped at scales ranging from 1:20,000 to 1:24,000.

Please rely on the bar scale on each map sheet for map measurements.

Source of Map: Natural Resources Conservation Service

Web Soil Survey URL:

Coordinate System: Web Mercator (EPSG:3857)

Maps from the Web Soil Survey are based on the Web Mercator projection, which preserves direction and shape but distorts distance and area. A projection that preserves area, such as the Albers equal-area conic projection, should be used if more accurate calculations of distance or area are required.

This product is generated from the USDA-NRCS certified data as of the version date(s) listed below.

Soil Survey Area: Indian River County, Florida

Survey Area Data: Version 20, Aug 25, 2021

Soil Survey Area: St. Lucie County, Florida

Survey Area Data: Version 15, Aug 25, 2021

Your area of interest (AOI) includes more than one soil survey area. These survey areas may have been mapped at different scales, with a different land use in mind, at different times, or at different levels of detail. This may result in map unit symbols, soil properties, and interpretations that do not completely agree across soil survey area boundaries.

Soil map units are labeled (as space allows) for map scales 1:50,000 or larger.

Date(s) aerial images were photographed: Jan 1, 1999—Dec 31, 2003

The orthophoto or other base map on which the soil lines were compiled and digitized probably differs from the background imagery displayed on these maps. As a result, some minor shifting of map unit boundaries may be evident.

Map Unit Legend

Map Unit Symbol	Map Unit Name	Acres in AOI	Percent of AOI
10	Riviera fine sand, 0 to 2 percent slopes	287.7	22.5%
13	Wabasso-Wabasso, wet, fine sand, 0 to 2 percent slopes	53.5	4.2%
14	Winder fine sand, 0 to 2 percent slopes	30.2	2.4%
15	Manatee loamy fine sand, frequently ponded, 0 to 1 percent slopes	5.6	0.4%
16	Pineda-Pineda, wet, fine sand, 0 to 2 percent slopes	24.4	1.9%
36	Cypress Lake-Cypress Lake, wet, fine sands, 0 to 2 percent slopes	3.7	0.3%
Subtotals for Soil Survey Area		405.1	31.7%
Totals for Area of Interest		1,279.6	100.0%

Map Unit Symbol	Map Unit Name	Acres in AOI	Percent of AOI
11	Chobee loamy sand, frequently ponded, 0 to 1 percent slopes	6.9	0.5%
13	Floridana sand, frequently ponded, 0 to 2 percent slopes	34.4	2.7%
15	Brynwood sand, 0 to 2 percent slopes	1.2	0.1%
16	Hilolo loamy sand, 0 to 2 percent slopes	3.2	0.3%
32	Pineda sand, 0 to 2 percent slopes	342.0	26.7%
36	Pople sand	67.6	5.3%
37	Riviera sand, frequently ponded, 0 to 1 percent slopes	136.9	10.7%
38	Riviera fine sand, 0 to 2 percent slopes	176.5	13.8%
48	Wabasso sand, 0 to 2 percent slopes	10.0	0.8%
49	Wabasso fine sand, gravelly substratum	39.2	3.1%
55	Winder loamy sand	56.7	4.4%
Subtotals for Soil Survey Area		874.5	68.3%
Totals for Area of Interest		1,279.6	100.0%