



Verified Carbon Standard

RENEWABLE WIND POWER PROJECT BY ADANI



Document Prepared by EKI Energy Services Limited

| | |
|--------------------------|--|
| Project Title | Renewable Wind Power Project by Adani |
| Version | 03 |
| Report ID | VVER 889 |
| Date of Issue | 25-October-2023 |
| Project ID | 2042 ¹ |
| Monitoring Period | 01-October-2022 to 31-August-2023 (first and last date included) |
| Prepared By | Ankit Sethiya Deputy Manager – Operations EKI Energy Services Limited |
| Contact | EnKing Embassy, Office No. 201, Plot 48, Scheme 78, Part 2, Vijay Nagar, Near brilliant Convention Centre, Indore- 452010, Madhya Pradesh, India. Website: www.enkingint.org Email ID: registry@enkingint.org , ankit.sethiya@enkingint.org Tel: 0731 428 9086 |

¹ <https://registry.verra.org/app/projectDetail/VCS/2042>

CONTENTS

| | | |
|----------|---|-----------|
| 1 | PROJECT DETAILS..... | 4 |
| 1.1 | Summary Description of the Implementation Status of the Project | 4 |
| 1.2 | Sectoral Scope and Project Type | 5 |
| 1.3 | Project Proponent | 5 |
| 1.4 | Other Entities Involved in the Project | 6 |
| 1.5 | Project Start Date | 6 |
| 1.6 | Project Crediting Period | 6 |
| 1.7 | Project Location | 6 |
| 1.8 | Title and Reference of Methodology | 8 |
| 1.9 | Participation under other GHG Programs..... | 8 |
| 1.10 | Other Forms of Credit and Supply Chain (Scope 3) Emissions | 8 |
| 1.11 | Sustainable Development Contributions | 9 |
| 2 | SAFEGUARDS..... | 13 |
| 2.1 | No Net Harm | 13 |
| 2.2 | Local Stakeholder Consultation | 13 |
| 2.3 | AFOLU-Specific Safeguards | 14 |
| 3 | IMPLEMENTATION STATUS..... | 14 |
| 3.1 | Implementation Status of the Project Activity | 14 |
| 3.2 | Deviations | 17 |
| 3.3 | Grouped Projects | 17 |
| 4 | DATA AND PARAMETERS..... | 18 |
| 4.1 | Data and Parameters Available at Validation | 18 |
| 4.2 | Data and Parameters Monitored..... | 19 |
| 4.3 | Monitoring Plan..... | 20 |
| 5 | QUANTIFICATION OF GHG EMISSION REDUCTIONS AND REMOVALS | 22 |
| 5.1 | Baseline Emissions | 22 |
| 5.2 | Project Emissions | 24 |
| 5.3 | Leakage..... | 24 |
| 5.4 | Net GHG Emission Reductions and Removals..... | 24 |

APPENDIX 1: METER CALIBRATION DETAILS..... 26

APPENDIX II: BREAKDOWN DETAILS 27

APPENDIX III: SDG CONTRIBUTION 39

1 PROJECT DETAILS

1.1 Summary Description of the Implementation Status of the Project

The project activity generates clean form of electricity through renewable wind energy source. The project involves 150 MW wind project in State of Gujarat.

Over the 10 years of first crediting period, the project replaces anthropogenic emissions of greenhouse gases (GHG's) estimated to be approximately 301,584 tCO_{2e} per year, thereon displacing 321,930 MWh/year amount of electricity from the generation-mix of power plants connected to the Indian grid, which is mainly dominated by thermal/fossil fuel-based power plant.

The details of the project are mentioned in the table below.

| Name of the SPVs ² | Site Name | Capacity (MW) | Number of WTGs | Commissioning date | Connection with the Grid | State | Usage |
|------------------------------------|---------------------|-----------------|----------------|--------------------|--------------------------|---------|--------------|
| Wind Three Renergy Private Limited | SPV 03 | 50 | 25x2.0 MW | 29-June-2019 | Indian Grid | Gujarat | Sale to grid |
| Wind One Renergy Private Limited | SPV 01 | 50 | 25x2.0 MW | 02-July-2019 | | | |
| Adani Green Energy (MP) Limited | SECI-I ³ | 50 ⁴ | 24x2.1 MW | 20-October-2019 | | | |

The monitoring period for this VCS verification is 01-October-2022 to 31-August-2023 (first and last days included) and VCS crediting period from 29-June-2019 to 28-June-2029 (Renewable Crediting Period).

The total GHG emission reductions or removals generated in this monitoring period

During the current monitoring period i.e., from 01-October-2022 to 31-August-2023 (first and last days included) the project activity has supplied 383,595.60 MWh of electricity, and thus contributing to the GHG reductions 359,351 tCO_{2e}.

| Audit Type | Period | Program | VVB Name | Number of years |
|------------|--------|---------|----------|-----------------|
|------------|--------|---------|----------|-----------------|

² SPVs are the Special Purpose Vehicles formed by PP to develop the project activities. For this project activity, Wind Three Renergy Private Limited, Wind One Renergy Private Limited & Adani Green Energy (MP) Limited are the SPVs and Adani Green Energy (MP) Limited is the parent company which is the PP of this project activity.

³ SECI-I is the part of SPVs and the Site name of Adani Green Energy (MP) Limited

⁴ As per signed PPA capacity of Adain Green Energy (MP) Limited is 50 MW. Though the installed capacity is 50.4 MW.

| | | | | |
|------------------------|--|-----|--------|---|
| Validation | 29-June-2019 to 28-June-2029 | VCS | ESPL | 10 Years 00 Month 00 Days |
| Verification | 29-June-2019 to 31-August-2021 | VCS | Applus | 02Years 02Months 3Days |
| Verification | 01-September-2021 to 30-September-2022 | VCS | Applus | 01Year 01Months 00Days |
| Verification (Ongoing) | 01-October-2022 to 31-August-2023 | VCS | VKU | 00Year 11Months 00Days |
| Total | Validation - 1 Verification - 3 | | | Validation - 10Years 00 Months 00 Days Verification - 04Year 02Months 03Days |

1.2 Sectoral Scope and Project Type

The project activity falls under the following Sectoral scope and Project Type.

Sectoral Scope: 01 - Energy industries (renewable / non-renewable sources)

Project Type: I - Renewable Energy Projects.

Project Category: Grid-connected electricity generation from renewable sources ACM0002-Version 19.0⁵. This project is not AFOLU project category.

Project is not grouped project activity as per VCS Standard version 4.5.

1.3 Project Proponent

| | |
|--------------------------|-----------------------------|
| Organization name | Adani Green Energy Limited |
| Contact person | Mr. Sandeep Saha |
| Title | Lead – Carbon Offset Market |

⁵ <https://cdm.unfccc.int/methodologies/DB/VJI9AX539D9MLOPXN2AY9UR1N4IYGD>

| | |
|------------------|--|
| Address | Adani Corporate House”, 4th Floor – South Wing, Shantigram, S. G. Highway, Ahmedabad 382421, Gujarat, India. |
| Telephone | +91- 79 2656 5555 |
| Email | sandip.saha@adani.com |

1.4 Other Entities Involved in the Project

| | |
|----------------------------|---|
| Organization name | EKI Energy Services Limited |
| Role in the Project | Project Consultant |
| Contact person | Manish Dabkara |
| Title | CEO & MD |
| Address | EnKing Embassy, Office No 201, Plot 48, Scheme 78, Part 2, Vijay Nagar, Indore- 452010, Madhya Pradesh, India. |
| Telephone | +91-731-4289086 |
| Email | manish@enkingint.org and registry@enkingint.org |

1.5 Project Start Date

Start date of the project activity is the earliest date of interconnection with the grid i.e., 29-June-2019. This is the date of commissioning of 50 MW wind energy project activity by Wind Three Renergy Pvt. Ltd.

1.6 Project Crediting Period

Crediting Period Start date: 29-June-2019

Crediting Period End date: 28-June-2029

The project activity adopts renewable crediting period of 10 years period which can be renewed for maximum 2 times as it is subject to revalidation at the end of crediting period.

1.7 Project Location

The details of the project locations are mentioned in the table below:

| Name of the SPVs | Capacity (MW) | Village | Taluka | District | State |
|------------------------------------|---------------|--------------------------------|------------|----------|----------|
| Wind Three Renergy Private Limited | 50 | Meghpar, Lakhpat Ratadiyaat | Nakhatrana | Kutch | Gujarat. |
| Wind One Renergy Private Limited | 50 | | | | |
| Adani Green Energy (MP) Limited | 50 | | | | |

The geo-coordinates of the project have been provided in the table below:

| Name of the SPVs | Capacity (MW) | Latitude | Longitude |
|---|---------------|-------------------|-------------------|
| Wind Three Renergy Private Limited | 50 | 23° 12' 32.4108"N | 70° 38' 7.6236"E |
| Wind One Renergy Private Limited | 50 | 23° 12' 29.9952"N | 70° 37' 50.9772"E |
| Adani Green Energy (MP) Limited | 50 | 23° 12' 30.42"N | 70° 38' 26.0484"E |
| SCADA - Control Room | - | 23° 30' 36.2232"N | 69° 07' 48.0648"E |
| Metering Substation of Wind Three Renergy Private Limited | - | 23° 37' 25.0140"N | 69° 00' 47.0304"E |
| Metering Substation of Wind One Renergy Private Limited | - | 23° 37' 24.7476"N | 69° 00' 46.3572"E |
| Metering Substation of Adani Green Energy (MP) Limited | - | 23° 30' 33.6060"N | 69° 07' 49.5948"E |

The project location has been highlighted in the map below:



1.8 Title and Reference of Methodology

Title: Grid-connected electricity generation from renewable sources

Reference: The project activity meets the eligibility criteria of large-scale project as it generates 300,000 tons of CO₂e or more of GHG emissions reductions or removals per year⁶.

Methodology: ACM0002: Grid-connected electricity generation from renewable sources - Version 19.0⁷

Type I: Energy industries (renewable / non-renewable sources)

Category: Approved Consolidated Methodology (ACM0002)

Tools referred with above methodology and applicable for project activity are:

- Tool to calculate the emission factor for an electricity system- Version 07.0⁸ (EB 100, Annex 04)
- Tool for the demonstration and assessment of additionality - Version 07.0.0⁹ (EB 70, Annex 08).

1.9 Participation under other GHG Programs

The project has neither been registered nor seeking registration under any other GHG programs. The project is registered only in VCS program.

1.10 Other Forms of Credit and Supply Chain (Scope 3) Emissions

Emission Trading Programs and Other Binding Limits:

Not applicable, as the project is not registered in any other GHG mechanism other than VCS. Also, the project activity is not availing any REC benefits and the same can be confirmed from publicly available link of REC generators¹⁰.

Other Forms of Environmental Credit: The Project Proponent has also submitted undertaking for not availing other forms of environmental credit for the same crediting period under consideration.

⁶ <https://verra.org/wp-content/uploads/2023/08/VCS-Program-Definitions-v4.4-updated-4-Oct-2023.pdf>

⁷ <https://cdm.unfccc.int/methodologies/DB/VJI9AX539D9MLOPXN2AY9UR1N4IYGD>

⁸ <https://cdm.unfccc.int/methodologies/PAMethodologies/tools/am-tool-07-v7.0.pdf>

⁹ <https://cdm.unfccc.int/methodologies/PAMethodologies/tools/am-tool-01-v7.0.0.pdf>

¹⁰ <https://evident.app/IREC/device-register/table>

Supply Chain (Scope 3) Emissions: The Project Activity is a wind power project and does not involve any supply chain involved in the project such as manufacturers, wholesalers, distributors and retailers. So, there is no upstream and downstream GHG emissions are involved in the project activity. Since scope 3 emissions are not accounted for this project, hence it is not applicable.

1.11 Sustainable Development Contributions

Contribution to sustainable development:

Ministry of Environment, Forest and Climate Change, has stipulated economic, social, environment and technological well-being as the four indicators of sustainable development. The project contributes to sustainable development using the following ways.

Social well-being: The project helps in generating employment opportunities during the construction and operation materiality phases. The project activity led to development in infrastructure in the region like development of roads and also may promote business with improved power generation.

Economic well-being: The project is a clean technology investment in the region, which would not have been taken place in the absence of the VCS benefits the project activity also helps to reduce the demand supply gap in the state.

Technological well-being: The successful operation of project activity led to promotion of wind-based power generation and encouraged other entrepreneurs to participate in similar projects.

Environmental well-being: Wind being a renewable source of energy, it reduces the dependence on fossil fuels and conserves natural resources which are on the verge of depletion. Due to its zero emission the Project activity also helps in avoiding significant amount of GHG emissions and specific pollutants like SO_x, NO_x, and SPM associated with the conventional thermal power generation facilities.

Table 1: Sustainable Development Contributions

| Row number | SDG Target | SDG Indicator | Net Impact on SDG Indicator | Current Project Contributions | Contributions Over Project Lifetime | |
|------------|------------|---|------------------------------------|--|--|-----------------------------|
| 1) | 7.2 | 7.2.1: Renewable energy share in the total final energy consumption | Implemented activities to increase | 383,595.60 MWh of renewable electricity has been supplied to national grid during the reported period that helps to increase the renewable energy share in the energy mix. | Crediting Period | Generated Electricity (MWh) |
| | | | | | 1 st Crediting Period | |
| | | | | | 29-June-2019 to 31-August-2021 | 696,482.80 |
| | | | | | 01-September-2021 to 30-September-2022 | 388,971.62 |
| | | | | | 01-October-2022 to 31-August-2023 | 383,595.60 |
| | | | | | Total | 1,469,050.02 |

| | | | | | | | |
|----|------|---|---------------------------------|---------------------------------|--|--|--|
| 2) | 13.2 | 13.2.2: greenhouse emissions per year | Total gas per decrease | Implemented activities to | By supplying 383,595.60 MWh clean electricity to national grid, the project avoided release of 359,351 tCO ₂ e in to the atmosphere during the monitoring period. | Crediting Period | Tonnes of GHG removed (tCO ₂ e) |
| | | | | | | 1 st Crediting Period | |
| | | | | | | 29-June-2019 to 31-August-2021 | 652,424 |
| | | | | | | 01-September-2021 to 30-September-2022 | 364,385 |
| | | | | | | 01-October-2022 to 31-August-2023 | 359,351 |
| | | | | | | Total | 1,376,160 |

| | | | | | | | | |
|----|-----|--|------------------------------------|----|---|--|---|----------------|
| 3) | 8.6 | 8.6.1: Proportion of youth (aged 15-24 years) not in education, employment or training | Implemented activities to increase | to | The number of trainings provided are 02 numbers during the monitoring period. | Crediting Period | | Training (Nos) |
| | | | | | | 1 st Crediting Period | | |
| | | | | | | 29-June-2019 to 31-August-2021 | 0 | |
| | | | | | | 01-September-2021 to 30-September-2022 | 0 | |
| | | | | | | 01-October-2022 to 31-August-2023 | 2 | |
| | | | | | | Total | 2 | |

2 SAFEGUARDS

2.1 No Net Harm

The project activity does not involve any major construction activity. It primarily requires the installation of the WTGs, interfacing the generators with the State Electricity Board by setting up HT transmission lines and installation of other accessories.

The report on “Developmental Impacts and Sustainable Governance Aspects of Renewable Energy Projects” prepared by MNRE dated September 2013¹¹. This report clearly mentioned that wind energy project activity operations do not result in direct air pollution, noise pollution.

Thus, there are no any negative socio-economic and environmental impacts due to implementation of project activity on air, water, soil quality and ambience are envisaged due to the project activity.

2.2 Local Stakeholder Consultation

The local stakeholder meeting was carried out for the project activity and the details of the same can be referred from the registered VCS PD.

For SPVs Wind One Renergy Pvt. Ltd and Wind Three Renergy Pvt Ltd., the stakeholder meeting was conducted at village Dayapar, Kutch District of Gujarat state, and the local stakeholders were invited for the stakeholder meeting through public notice on 22-April-2019 and the meeting was conducted on 28-April-2019. For SPV Adani Green Energy (MP) Limited, the stakeholder meeting was conducted at village Ratadiyat, Kutch District of Gujarat state, and the local stakeholders were invited for the stakeholder meeting through public notice on 19-April-2019 and the stakeholder meeting was conducted on 26-April-2019.

During the stakeholder meeting, the stakeholders were briefed about the project activity. The stakeholders were also allowed for the feedback/clarification session, wherein, the stakeholders put forward their queries which were answered by the PP representative.

The project proponent has devised a system for continuous local stakeholder interaction during the operation of the project. Local stakeholders are allowed to visit the project site and raise their concern about the project. A grievance register is maintained at the project site in which the feedback and concerns are reported. There is no adverse comment recorded to be reported during the monitoring period under consideration. The copy of grievance register is submitted to the VVB.

¹¹ https://odishainnovationcell.nic.in/Content/SIC/Articles/RE_Development_Impacts_in_India.pdf

Adani Foundation, is now expanded to 8 additional schools across Nakhatrana, Kutch, Gujarat after its successful impact on 2411 students from 17 schools of 7 villages at Kutch district. The Adani Foundation is also working to improve access to quality education in Kutch through its Adani Vidya Mandir school in Mundra. This school provides free education to children from low-income group families.

As a part of continuous and on-going feedback/communication from stakeholders, the PP has placed a grievance register onsite where-in, the stakeholders can put down their complaints/feedbacks. However, during the current monitoring period, no comments or feedbacks were received.

2.3 AFOLU-Specific Safeguards

This project is not AFOLU project. Therefore, not applicable.

3 IMPLEMENTATION STATUS

3.1 Implementation Status of the Project Activity

The project activity is wind project. The total installed capacity of the project is 150 MW of Wind project located in Gujrat state of India.

The Project activity is a new facility (Greenfield) and the electricity generated by the project is exported to the Indian electricity grid. The project therefore displaces an equivalent amount of electricity which would have otherwise been generated by fossil fuel dominant electricity grid. The Project Proponent avails the VCS benefits for the project.

During the current monitoring period electricity generation for wind one and wind three was zero due to 220kV grid line failure of WTGs for the month of October and November 2022. Values has been taken zero for the calculation of emission reductions for the current monitoring period of this project activity.

In the Pre- project scenario the entire electricity, delivered to the grid by the project activity, would have otherwise been generated by the operation of grid-connected power plants and by the addition of new generation sources.

The project results in replacing anthropogenic emissions of greenhouse gases (GHG's) estimated to be approximately 301,584 tCO_{2e} per year, thereon displacing 321,930 MWh/year amount of electricity from the grid over the 10 years crediting period.

1. Wind One Renegy Private Limited & Wind Three Renegy Private Limited

Technical specification for installed 50 WTGs of SPV 01 & SPV 03 are provided below¹² -

¹² <https://en.wind-turbine-models.com/turbines/1846-inox-df-113>

| Parameter | Technical Data / Description |
|---|--|
| General Parameters | |
| Turbine | INOX, DF/2000/113 (HH120) |
| Rated Output | 2000 kW |
| Wind Speed at rated output (m/s) | 10.5 m/s |
| Cut in Wind Speed (m/s) | 3 m/s |
| Cut out Wind Speed (m/s) | 20 m/s |
| Survival Wind Speed (m/s) | 52.5 m/s |
| Rotor Diameter (m) | 113 m |
| Hub Height (m) | 120 m (Hybrid) |
| Rotor Speed (rpm) | 14.2 RPM |
| Power Regulation Independent Mechanical Pitch | Independent Mechanical Pitch |
| WTG design for which wind regime | Low Wind Speed |
| Class of Machine | III A |
| Life | 25 years |
| Generator | |
| Rated Power Output (kW) | 2000 kW |
| Type | Asynchronous Double Fed Induction Generator |
| Voltage | 690 V AC, 3 Phase |
| Operation Speed Range, RPM | Variable, 620-1380 RPM |
| Current | Rated stator current-1506-1526 A, Rated rotor current-526-529 A |
| Rated Generator Speed, RPM | 1200 RPM |
| No. of Poles | 6 |
| Insulation Class | Stator-F, Rotor-F |
| Protection Class | IP 54 |
| Coupling | Flexible |
| Frequency | 50 Hz |
| Drive Train | Patented integral drive train |
| Voltage Variation | ±10 % |
| Power Factor | 0.95 Inductive ~ 0.95 Capacitive (Grid Voltage 690 V AC with Tolerance ±10%) |
| Auxiliary Power Consumption | 0.5 % of Generation |
| Type of Cooling | Forced water cooling |
| Yawing System | |
| Type | Direct Contact, Driven by 4 Gear Motors |
| Yaw Motors | 3 Phase, 3 kW, 50 Hz |
| Yaw Brake | Holding Brake with Electric & Manual Brake Release |
| AC Motor | Type S1 |
| Pitching System | |
| Type | 3 Phase Servo Motors |
| Control | Through Pitch Converter |
| Backup | Capacitor Based |
| Braking System for Rotor Braking | |
| Maintenance Braking | Hydraulic Operated Rotor Lock |
| Manual Locking Arrangement | Hydraulic Operated Rotor Lock |
| Rotor Blade | |
| Blade Material | Glass Fiber |
| Special attachments in Blade | Rain Deflector |
| Length of Blade | 55.2 m |
| Swept Area of Blade | 10029 sq. m |

| | |
|--------------------------------------|--|
| Swept Area per kW Power (sq. m/kW) | 5.01 |
| Number of Blades | 3 |
| Power Regulation | Pitch Control |
| Nacelle | |
| Nacelle Cover & Material | Fibre Reinforcement Plastic |
| Type of Nacelle Bed | Casting |
| Facilities for Loading & Unloading | Lifting Eye Bolts |
| Lightning Protection | Sliding Carbon Brushes & Cables |
| Weight | 74.88 MT |
| Transformer Mounting | Switchyard |
| Sensors | |
| Anemometer | Acoustic Resonance Type (Acu-Res Technology) |
| Rotor Speed Sensor | Encoder Type 512 Pulse A,B,O/ A/B/O Channel, Push Pull O/p |
| Blade Position Sensor | Micro Switching Technology |
| Yaw Pad Sensor | Not applicable |
| Yaw Motor Speed Sensor | Not required |
| Over Speed Sensor | Programmable Monitoring Speed Relay |
| Resolver | Integrated Encoder in Motor |
| Cable Twist Sensor | YCD (B-Command) |
| Acceleration Sensor | Double Acceleration Transducer |
| Current Sensor | CT |
| Temperature Sensor | PT100 |
| Power Panel | |
| Voltage | 690 V |
| Short Circuit Level | EN 954 Category-1 |
| Rating of Main MCCB | 2000 A |
| Provision for Earth Fault Protection | Yes |
| Local Control Panel | |
| List of Displays | NC (Nacelle Cabinet) & TBC (Tower Base Cabinet) |
| Control Systems | |
| Controller Type | PLC |
| Display | FR 1 (SCADA Based) |
| Tower | |
| Tower Height (m) | 118 m |
| Transformer Capacity | 3- PH, 250KVA |
| Transformer Voltage | 33/ 0.433 KV |

2. Adani Green Energy (MP) Limited

Technical specification for installed 24 WTGs of SECI-I is provided below -

| | |
|----------------------|----------------------|
| Model | S120 - 2.1 MW |
| Calculated life time | 20 years |
| Cut in wind speed | 3.0 m/s |
| Cut out wind speed | 18.0 m/s |
| Rotor | |
| Rotor diameter | 120.0 m |
| Rotational speed | 7.8 to 14.4 rpm |

| | |
|------------------------|---------------------------------------|
| Rotor type | Pitch regulated |
| No. of blades | 3 |
| Blade Material | Epoxy bonded fiber glass |
| Gear Box | |
| Nominal load | 2100 kW |
| Ratio | 1:90 |
| Generator | |
| Rated voltage | 690 V |
| Insulation | Class H |
| Tower | |
| Hub Height | 140 m |
| Breaking system | |
| Mechanical breaking | Hydraulic fail-safe disk brake system |
| Yaw System | |
| Type | Friction bearing with gear rim |
| Bearing | Polyamide slide |
| Transformer Capacity | 3- PH, 250KVA |
| Transformer Voltage | 33 KV |

3.2 Deviations

3.2.1 Methodology Deviations

There is no request for methodology deviation applied during current monitoring period.

3.2.2 Project Description Deviations

At the time of registration, the source of generation data for all the SPVs, the JMRs were considered as the source. However, REA statements are being issued for all the three SPVs. The REA statements being issued to PP as source of data for the generation is as per the requirement of State electricity authority and PP has no role to play in it. Hence, the generation data during the current monitoring period has been taken from the REA statements. Therefore, PP seeks the same as deviation from the source of data for generation from the registered PD.

It is to be noted that, due to this deviation, there is no any impact on the applicability of the methodology, additionality, or the baseline scenario of the project activity.

3.3 Grouped Projects

This project activity is not a grouped project activity. Hence not applicable.

4 DATA AND PARAMETERS

4.1 Data and Parameters Available at Validation

| | |
|---|---|
| Data / Parameter | $EF_{grid,OM,y}$ |
| Data unit | tCO ₂ /MWh |
| Description | Operating Margin CO ₂ emission factor in year y |
| Source of data | Calculated from CEA database, Version 14, Dec 2018 ¹³ |
| Value applied | 0.9610 |
| Justification of choice of data or description of measurement methods and procedures applied | Calculated as per “Tool to calculate the emission factor for an electricity system, version 07” as 3-year generation weighted average using data for the years 2015-16, 2016-17 & 2017-18. The data are obtained from “CO ₂ Baseline Database for Indian Power Sector” version 14, published by the Central Electricity Authority, Ministry of Power, Government of India. |
| Purpose of Data | For the calculation of the Baseline Emission |
| Comments | This parameter is fixed ex-ante for the entire crediting period. |

| | |
|---|--|
| Data / Parameter | $EF_{grid,BM,y}$ |
| Data unit | tCO ₂ /MWh |
| Description | Build Margin CO ₂ emission factor in year y |
| Source of data | Calculated from CEA database, Version 14, Dec 2018 ¹⁴ |
| Value applied | 0.8644 |
| Justification of choice of data or description of measurement methods and procedures applied | Calculated as per “Tool to calculate the emission factor for an electricity system, version 07” as per the latest data available for the most recent year 2017-18. The data is obtained from “CO ₂ Baseline Database for Indian Power Sector” version 14, published by the Central Electricity Authority, Ministry of Power, and Government of India. |
| Purpose of Data | For the calculation of the Baseline Emission |
| Comments | This parameter is fixed ex-ante for the entire crediting period. |

| | |
|-------------------------|-----------------------|
| Data / Parameter | $EF_{grid,CM,y}$ |
| Data unit | tCO ₂ /MWh |

¹³ https://cea.nic.in/wp-content/uploads/baseline/2020/07/user_guide_ver14.pdf

¹⁴ https://cea.nic.in/wp-content/uploads/baseline/2020/07/user_guide_ver14.pdf

| | |
|---|--|
| Description | Combined Margin CO ₂ emission factor in year y |
| Source of data | Calculated from CEA database, Version 14, Dec 2018 ¹⁵ |
| Value applied | 0.9368 |
| Justification of choice of data or description of measurement methods and procedures applied | <p>The combined margin emissions factor is calculated as follows: $EF_{grid,CM,y} = EF_{grid,OM,y} * W_{OM} + EF_{grid,BM,y} * W_{BM}$</p> <p>Where:</p> <p>$EF_{grid,BM,y}$ = Build margin CO₂ emission factor in year y (tCO₂/MWh) $EF_{grid,OM,y}$ = Operating margin CO₂ emission factor in year y (tCO₂/MWh)</p> <p>W_{OM} = Weighting of operating margin emissions factor (%) = 75% W_{BM} = Weighting of build margin emissions factor (%) = 25%</p> |
| Purpose of Data | For the calculation of the Baseline Emission |
| Comments | This parameter is fixed ex-ante for the entire crediting period. |

4.2 Data and Parameters Monitored

| | |
|--|---|
| Data / Parameter | EG _{PJ,y} |
| Data unit | MWh |
| Description | Quantity of net electricity generation supplied by the project plant/unit to the grid in year y in MWh |
| Source of data | Regional Energy Account statement issued by WRPC |
| Description of measurement methods and procedures to be applied | <p>Data Type: Measured</p> <p>Monitoring equipment: Energy Meters are used for monitoring</p> <p>Recording Frequency: Continuous monitoring and Monthly recording from Energy Meters</p> <p>Archiving Policy: Paper & Electronic</p> <p>Class of meter: 0.2s</p> <p>Calibration frequency: Once in five years</p> <p>The REA statement issued by WRPC contains the information of the Scheduled Power¹⁶. The scheduled power being fed into the grid is crosschecked from the monthly Invoices raised by the PP. For ER calculations, the values of Scheduled Power (Net Energy Export) is considered.</p> |
| Frequency of monitoring/recording | Continuous measurement & monthly recording |

¹⁵ https://cea.nic.in/wp-content/uploads/baseline/2020/07/user_guide_ver14.pdf

¹⁶ Scheduled Power is net energy exported to the grid

| | |
|---------------------------------------|---|
| Value monitored | 383,595.60 |
| Monitoring equipment | The energy meters of L&T and Secure make of 0.2s accuracy class used to measure electricity exported / supplied by the plant to pooling substation and further to substation ¹⁷ . This meter also measures electricity imported by the plant from the grid. Please refer to Appendix 1 for meter details. |
| QA/QC procedures to be applied | Energy meters are calibrated once in a five year and faulty meters will be duly replaced immediately. This data may be cross checked with the Monthly Generation Reports. |
| Purpose of the data | Calculation of baseline emissions |
| Calculation method | The REA statement issued by WRPC contains the information of the Scheduled Power. For ER calculations, the values of Scheduled Power are considered |
| Comments | Data will be archived in paper & electronic form for two years after the end of crediting period or of the last issuance of VCUs for this project activity, whichever occurs later. |

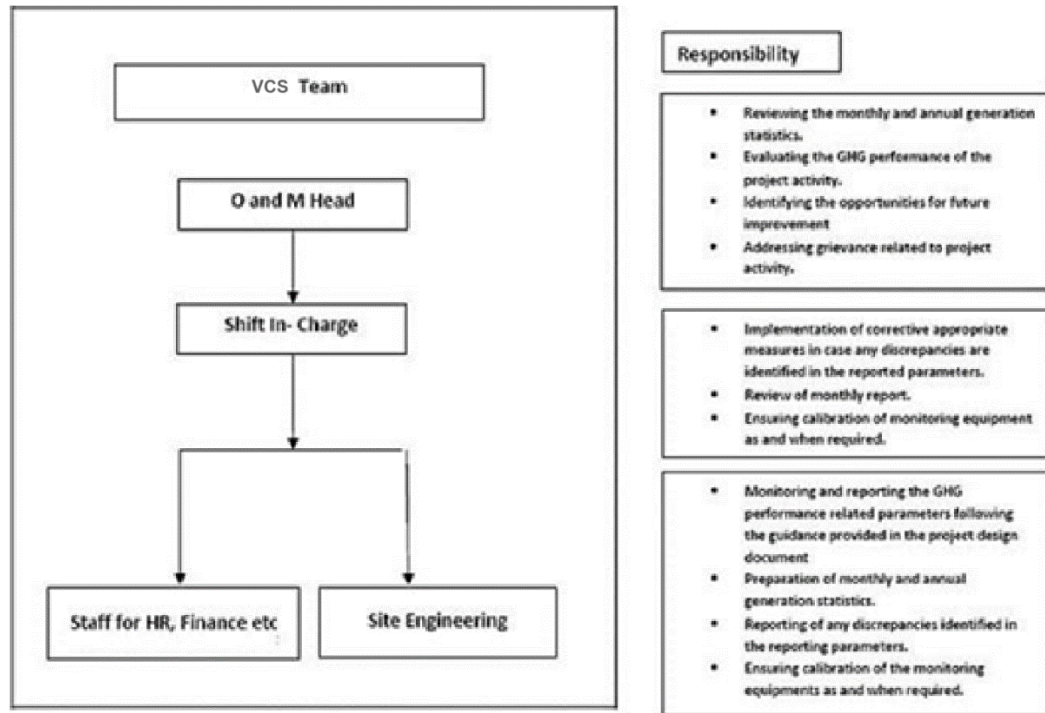
4.3 Monitoring Plan

The monitoring plan is developed in accordance with the modalities and procedures for CDM project activities and is proposed for grid-connected wind power project being implemented. The monitoring plan, which is implemented by the project participant describes about the monitoring organisation, parameters to be monitored, monitoring practices, quality assurance, quality control procedures, data storage and archiving.

As per internal audit conducted by the audit team of PP, there has been no non conformities identified in the monitoring plan in the entire project activity.

The authority and responsibility for registration, monitoring, measurement, reporting and reviewing of the data rests with the project participant. PP proposed the following structure for data monitoring, collection, data archiving and calibration of equipment's for this project activity. The team comprises of the following members:

¹⁷ Energy meters are located at 33KV substation which is owned by SPVs.



Data Measurement

The export and import energy are measured continuously using the Main and Check meters located at the substations. Readings of meters are taken on monthly basis by authorized officer of SEB in the presence of PP or representative of PP. Based on the Meter Reading Statement to PP, invoices are raised. These invoices can be used for cross checking the meter readings taken for the respective project activity. And the whole energy measurement with done through REA and source is taken from REA.

The calibration of the energy meters is supposed to be carried out once in five years as per registered VCS PD. If calibration of the energy meters will not be valid during the crediting period. Then, as per Annex 60¹⁸ 'Guidelines for Assessing compliance with the calibration frequency' error factor will be applied in the readings.

Data collection and archiving

Readings from meters are collected in the presence of the plant in-charge. Export and Import data are recorded and stored in logs as well as in electronic form on a daily basis. The records are checked periodically by the Plant Manager and discussed thoroughly with the plant supervisor. The period of storage of the monitored data is 2 years after the end of crediting period or till the last issuance of VCUs for the project activity whichever occurs later.

Emergency preparedness

¹⁸ https://cdm.unfccc.int/EB/052/eb52_repan60.pdf

The project activity does not result in any unidentified activity that can result in substantial emissions from the project activity. No need for emergency preparedness in data monitoring is visualized. In the event that the main meter, which is used to record the net electricity exported by the project, is found to be faulty it will be repaired or replaced and the data from the check meter will be used in its place. In the unlikely event that the check meter fails it will also be repaired or replaced. In addition to main meter & check meter, there is standby meter having separate CT & PT then main meter & check meter to continue the monitoring.

Personnel training

In order to ensure a proper functioning of the project activity and a properly monitoring of emission reductions, the staff are trained. The plant helpers have been trained in equipment operation, data recording, reports writing, operation and maintenance and emergency procedures in compliance with the monitoring plan.

QA/QC procedures

The energy meters at the feeders are maintained and owned by state electricity board. Neither the project proponent nor the site personnel have any control over it. The records are crosschecked with the records of sold electricity to state electricity board. The meters are calibrated by state electricity board at-least once in five years.

Apportioning

In case the dates of a particular monitoring period do not match with the dates of the billing cycle, the net electricity exported to the grid would be calculated from:

Apportioning the net electricity exported to grid, as recorded in the consolidated Share Certificate / JMR Report / Credit Notes certified by the respective state discom, based on the number of days in the monitoring period and the number of days for which Share Certificate / JMR Report / Credit Notes was prepared.

5 QUANTIFICATION OF GHG EMISSION REDUCTIONS AND REMOVALS

5.1 Baseline Emissions

Emission reductions due to project activity are calculated as follows,

$$ER_y = BE_y - PE_y - LE_y$$

Where,

ER_y = Emission reductions in year y (tCO₂e/yr)

BE_y = Baseline emissions in year y (tCO₂e/yr)

PE_y = Project emissions in year y(tCO₂e/yr)

LE_y = Leakage emissions in year y(tCO₂e/yr)

The baseline emissions are to be calculated as follows:

$$BE_y = EG_{PJ,y} * EF_{grid,CM,y}$$

Where:

BE_y : Baseline emissions in year y (tCO₂e/yr)

$EG_{PJ,y}$: Quantity of net electricity generation that is produced and fed into the grid as a result of the implementation of the VCS project activity in year y (MWh/yr)

$EF_{grid,CM,y}$: Combined margin CO₂ emission factor for grid connected power generation in year y calculated using the latest version of the “Tool to calculate the emission factor for an electricity system” (tCO₂e/MWh)

The baseline emissions for the project activity for the current monitoring period are as follows.

Baseline Emission factor, $EF_{grid,CM,y} = 0.9368$ tCO₂e/MWh

Calculation of $EG_{PJ,y}$

The calculation of $EG_{PJ,y}$ is different for Greenfield plants, capacity additions, retrofits, rehabilitations, and replacements. These cases are described as follows:

$$EG_{PJ,y} = EG_{facility,y} \quad \text{as per equation 12 (ACM0002, Version 19.0)}$$

Where;

$EG_{PJ,y}$ = Quantity of net electricity generation that is produced and fed into the grid as a result of the implementation of the project activity in year y (MWh/yr)

$EG_{facility,y}$ = Quantity of net electricity generation supplied by the project plant/unit to the grid in year y (MWh/yr)

| Month | Electricity Supplied to the Grid, $EG_{PJ,y}$ (MWh) | PLF | Percentage Change in PLF |
|--------------------------------------|---|--------|--------------------------|
| 01-October-2022 to 31-October-2022 | 7273.830 | 6.52% | -73.40% |
| 01-November-2022 to 30-November-2022 | 4553.020 | 4.22% | -82.79% |
| 01-December-2022 to 31-December-2022 | 22192.836 | 19.89% | -18.83% |
| 01-January-2023 to 31-January-2023 | 36319.432 | 32.54% | 32.83% |
| 01-February-2023 to 28-February-2023 | 21918.690 | 21.74% | -11.25% |

| | | | |
|----------------------------------|------------|--------|---------|
| 01-March-2023 to 31-March-2023 | 28228.507 | 25.29% | 3.24% |
| 01-April-2023 to 30-April-2023 | 34777.111 | 32.20% | 31.43% |
| 01-May-2023 to 31-May-2023 | 46328.029 | 41.51% | 69.44% |
| 01-June-2023 to 30-June-2023 | 46480.912 | 43.04% | 75.66% |
| 01-July-2023 to 31-July-2023 | 49540.939 | 44.39% | 81.19% |
| 01-August-2023 to 31-August-2023 | 85982.294 | 77.05% | 214.47% |
| Total | 383,595.60 | - | - |

Total Baseline emission for the Monitoring period:

| Parameter | Unit | Value |
|------------------|------------------------|----------------------------|
| $EG_{PJ,y}$ | MWh | 383,595.60 |
| $EF_{grid,CM,y}$ | tCO ₂ e/MWh | 0.9368 |
| BE_y | tCO ₂ e | 359,351 (Round down value) |

5.2 Project Emissions

Not applicable, since project emissions from the wind project activity is zero as per para 34 of ACM0002 version 19¹⁹. Hence, $PE_y = 0$.

5.3 Leakage

Not Applicable, since leakage emissions from the wind project activity is zero as per para 56 of ACM0002 version 19²⁰. Hence, $LE_y = 0$.

5.4 Net GHG Emission Reductions and Removals

| Year | Baseline emissions or removals (tCO ₂ e) | Project emissions or removals (tCO ₂ e) | Leakage emissions (tCO ₂ e) | Net GHG emission reductions or removals (tCO ₂ e) |
|------|---|--|--|--|
|------|---|--|--|--|

¹⁹ <https://cdm.unfccc.int/UserManagement/FileStorage/58IAGB7SZUDE02VN6LYM30K41HFPRQ>

²⁰ <https://cdm.unfccc.int/UserManagement/FileStorage/58IAGB7SZUDE02VN6LYM30K41HFPRQ>

| | | | | |
|-------------------------------------|----------------|----------|----------|----------------|
| 01-October-2022 to 31-December-2022 | 31,869 | 0 | 0 | 31,869 |
| 01-January-2023 to 31-August-2023 | 327,482 | 0 | 0 | 327,482 |
| Total | 359,351 | 0 | 0 | 359,351 |

| <u>Ex-ante emissions reductions /removals</u> | <u>Achieved emissions reductions /removals</u> | <u>Percent difference</u> | <u>Justification for the difference</u> |
|---|--|---------------------------|--|
| 276,796 (01-October-2022 to 31-August-2023) | 359,351 | 29.83% | The estimated emission reduction to be achieved from the project activity for the current monitoring period is 276,796 tCO ₂ e (the basis of calculation is unitary method using annual emission reduction in the registered VCS PD), whereas actual emission reductions achieved are 359,351 tCO ₂ e, which is approximately 29.83% higher than the estimated ones in the VCS PD. The generation of electricity depends upon many other climatic conditions, which are not within the control of the project participant. |

The observed PLF (31.81%) during the current monitoring period is 29.83% higher than the estimation in the registered VCS PD. Also, as per the registered VCS PD, the 54.38% increase in PLF would breach the threshold value of equity IRR value. The current increase is 29.83% which is lower than 54.38%, therefore increase in PLF having no impact on the project additionality.

From April to September period is known as high wind season, that's why generation of each SPVs is significantly higher than the annual estimated energy generation.

APPENDIX 1: METER CALIBRATION DETAILS

The details of the energy meters and their calibration details are provided in the table below.

| Name of the SPVs | Feeder Details | Meter Serial No. | Accuracy Class | Make | Date of Calibration | Due date of calibration ²¹ |
|------------------------------------|----------------|-------------------------|----------------|--------|---------------------|---------------------------------------|
| Wind Three Renergy Private Limited | Feeder- 2 | LT-0702-A (Main Meter) | 0.2 s | L & T | 13-June-2019 | 12-June-2024 |
| | | LT-0716-A (Check Meter) | | | 13-June-2019 | 12-June-2024 |
| | Feeder- 4 | LT-0746-A (Main Meter) | | | 13-June-2019 | 12-June-2024 |
| | | LT-0750-A (Check Meter) | | | 13-June-2019 | 12-June-2024 |
| Wind One Renergy Private Limited | Feeder- 5 | LT-0754-A (Main meter) | 0.2 s | L & T | 13-June-2019 | 12-June-2024 |
| | | LT-0756-A (Check Meter) | | | 13-June-2019 | 12-June-2024 |
| | Feeder- 9 | LT-0782-A (Main Meter) | | | 13-June-2019 | 12-June-2024 |
| | | LT-0783-A (Check Meter) | | | 13-June-2019 | 12-June-2024 |
| Adani Green Energy(MP) Limited | Feeder- 304 | RE-0026-A (Main Meter) | 0.2 s | L & T | 07-June-2019 | 06-June-2024 |
| | | RE-0037-A (Check Meter) | | | 27-May-2019 | 26-May-2024 |
| | | GJU77231(Standby Meter) | 0.2 s | Secure | 11-June-2019 | 10-June-2024 |
| | Feeder- 305 | RE-0043-A (Main Meter) | 0.2 s | L & T | 27-May-2019 | 26-May-2024 |
| | | RE-0027-A (Check Meter) | | | 07-June-2019 | 06-June-2024 |
| | | GJU77230(Standby Meter) | 0.2 s | Secure | 11-June-2019 | 10-June-2024 |

²¹ At the time of commissioning, newly calibrated meters were installed. The calibration frequency is once in five years, and the calibrations are valid during the current monitoring period. Hence, no delay in error factor is applicable during the current monitoring period. And certificate was issued by the manufacturer.

APPENDIX II: BREAKDOWN DETAILS

| Site | SPV Name | Date | Fault Description | Breakdown Hours (HH:MM) |
|---------------|----------------------------------|-----------------|-------------------|-------------------------|
| Dayapar-SPV01 | Wind One Renergy Private Limited | 01-October-2022 | Grid Breakdown | 24.00. |
| Dayapar-SPV01 | Wind One Renergy Private Limited | 02-October-2022 | Grid Breakdown | 24.00 |
| Dayapar-SPV01 | Wind One Renergy Private Limited | 03-October-2022 | Grid Breakdown | 24.00 |
| Dayapar-SPV01 | Wind One Renergy Private Limited | 04-October-2022 | Grid Breakdown | 24.00 |
| Dayapar-SPV01 | Wind One Renergy Private Limited | 05-October-2022 | Grid Breakdown | 24.00 |
| Dayapar-SPV01 | Wind One Renergy Private Limited | 06-October-2022 | Grid Breakdown | 24.00 |
| Dayapar-SPV01 | Wind One Renergy Private Limited | 07-October-2022 | Grid Breakdown | 24.00 |
| Dayapar-SPV01 | Wind One Renergy Private Limited | 08-October-2022 | Grid Breakdown | 24.00 |
| Dayapar-SPV01 | Wind One Renergy Private Limited | 09-October-2022 | Grid Breakdown | 24.00 |
| Dayapar-SPV01 | Wind One Renergy Private Limited | 10-October-2022 | Grid Breakdown | 24.00 |

| | | | | |
|---------------|----------------------------------|-----------------|----------------|-------|
| Dayapar-SPV01 | Wind One Renergy Private Limited | 11-October-2022 | Grid Breakdown | 24.00 |
| Dayapar-SPV01 | Wind One Renergy Private Limited | 12-October-2022 | Grid Breakdown | 24.00 |
| Dayapar-SPV01 | Wind One Renergy Private Limited | 13-October-2022 | Grid Breakdown | 24.00 |
| Dayapar-SPV01 | Wind One Renergy Private Limited | 14-October-2022 | Grid Breakdown | 24.00 |
| Dayapar-SPV01 | Wind One Renergy Private Limited | 15-October-2022 | Grid Breakdown | 24.00 |
| Dayapar-SPV01 | Wind One Renergy Private Limited | 16-October-2022 | Grid Breakdown | 24.00 |
| Dayapar-SPV01 | Wind One Renergy Private Limited | 17-October-2022 | Grid Breakdown | 24.00 |
| Dayapar-SPV01 | Wind One Renergy Private Limited | 18-October-2022 | Grid Breakdown | 24.00 |
| Dayapar-SPV01 | Wind One Renergy Private Limited | 19-October-2022 | Grid Breakdown | 24.00 |
| Dayapar-SPV01 | Wind One Renergy Private Limited | 20-October-2022 | Grid Breakdown | 24.00 |
| Dayapar-SPV01 | Wind One Renergy Private Limited | 21-October-2022 | Grid Breakdown | 24.00 |

| | | | | |
|---------------|----------------------------------|------------------|----------------|-------|
| Dayapar-SPV01 | Wind One Renergy Private Limited | 22-October-2022 | Grid Breakdown | 24.00 |
| Dayapar-SPV01 | Wind One Renergy Private Limited | 23-October-2022 | Grid Breakdown | 24.00 |
| Dayapar-SPV01 | Wind One Renergy Private Limited | 24-October-2022 | Grid Breakdown | 24.00 |
| Dayapar-SPV01 | Wind One Renergy Private Limited | 25-October-2022 | Grid Breakdown | 24.00 |
| Dayapar-SPV01 | Wind One Renergy Private Limited | 26-October-2022 | Grid Breakdown | 24.00 |
| Dayapar-SPV01 | Wind One Renergy Private Limited | 27-October-2022 | Grid Breakdown | 24.00 |
| Dayapar-SPV01 | Wind One Renergy Private Limited | 28-October-2022 | Grid Breakdown | 24.00 |
| Dayapar-SPV01 | Wind One Renergy Private Limited | 29-October-2022 | Grid Breakdown | 24.00 |
| Dayapar-SPV01 | Wind One Renergy Private Limited | 30-October-2022 | Grid Breakdown | 24.00 |
| Dayapar-SPV01 | Wind One Renergy Private Limited | 31-October-2022 | Grid Breakdown | 24.00 |
| Dayapar-SPV01 | Wind One Renergy Private Limited | 01-November-2022 | Grid Breakdown | 24.00 |

| | | | | |
|---------------|----------------------------------|------------------|----------------|-------|
| Dayapar-SPV01 | Wind One Renergy Private Limited | 02-November-2022 | Grid Breakdown | 24.00 |
| Dayapar-SPV01 | Wind One Renergy Private Limited | 03-November-2022 | Grid Breakdown | 24.00 |
| Dayapar-SPV01 | Wind One Renergy Private Limited | 04-November-2022 | Grid Breakdown | 24.00 |
| Dayapar-SPV01 | Wind One Renergy Private Limited | 05-November-2022 | Grid Breakdown | 24.00 |
| Dayapar-SPV01 | Wind One Renergy Private Limited | 06-November-2022 | Grid Breakdown | 24.00 |
| Dayapar-SPV01 | Wind One Renergy Private Limited | 07-November-2022 | Grid Breakdown | 24.00 |
| Dayapar-SPV01 | Wind One Renergy Private Limited | 08-November-2022 | Grid Breakdown | 24.00 |
| Dayapar-SPV01 | Wind One Renergy Private Limited | 09-November-2022 | Grid Breakdown | 24.00 |
| Dayapar-SPV01 | Wind One Renergy Private Limited | 10-November-2022 | Grid Breakdown | 24.00 |
| Dayapar-SPV01 | Wind One Renergy Private Limited | 11-November-2022 | Grid Breakdown | 24.00 |
| Dayapar-SPV01 | Wind One Renergy Private Limited | 12-November-2022 | Grid Breakdown | 24.00 |

| | | | | |
|---------------|----------------------------------|------------------|----------------|-------|
| Dayapar-SPV01 | Wind One Renergy Private Limited | 13-November-2022 | Grid Breakdown | 24.00 |
| Dayapar-SPV01 | Wind One Renergy Private Limited | 14-November-2022 | Grid Breakdown | 24.00 |
| Dayapar-SPV01 | Wind One Renergy Private Limited | 15-November-2022 | Grid Breakdown | 24.00 |
| Dayapar-SPV01 | Wind One Renergy Private Limited | 16-November-2022 | Grid Breakdown | 24.00 |
| Dayapar-SPV01 | Wind One Renergy Private Limited | 17-November-2022 | Grid Breakdown | 24.00 |
| Dayapar-SPV01 | Wind One Renergy Private Limited | 18-November-2022 | Grid Breakdown | 24.00 |
| Dayapar-SPV01 | Wind One Renergy Private Limited | 19-November-2022 | Grid Breakdown | 24.00 |
| Dayapar-SPV01 | Wind One Renergy Private Limited | 20-November-2022 | Grid Breakdown | 24.00 |
| Dayapar-SPV01 | Wind One Renergy Private Limited | 21-November-2022 | Grid Breakdown | 24.00 |
| Dayapar-SPV01 | Wind One Renergy Private Limited | 22-November-2022 | Grid Breakdown | 24.00 |
| Dayapar-SPV01 | Wind One Renergy Private Limited | 23-November-2022 | Grid Breakdown | 24.00 |

| | | | | |
|---------------|------------------------------------|------------------|----------------|-------|
| Dayapar-SPV01 | Wind One Renergy Private Limited | 24-November-2022 | Grid Breakdown | 24.00 |
| Dayapar-SPV01 | Wind One Renergy Private Limited | 25-November-2022 | Grid Breakdown | 24.00 |
| Dayapar-SPV01 | Wind One Renergy Private Limited | 26-November-2022 | Grid Breakdown | 24.00 |
| Dayapar-SPV01 | Wind One Renergy Private Limited | 27-November-2022 | Grid Breakdown | 24.00 |
| Dayapar-SPV01 | Wind One Renergy Private Limited | 28-November-2022 | Grid Breakdown | 24.00 |
| Dayapar-SPV01 | Wind One Renergy Private Limited | 29-November-2022 | Grid Breakdown | 24.00 |
| Dayapar-SPV01 | Wind One Renergy Private Limited | 30-November-2022 | Grid Breakdown | 24.00 |
| Dayapar-SPV03 | Wind Three Renergy Private Limited | 01-October-2022 | Grid Breakdown | 24.00 |
| Dayapar-SPV03 | Wind Three Renergy Private Limited | 02-October-2022 | Grid Breakdown | 24.00 |
| Dayapar-SPV03 | Wind Three Renergy Private Limited | 03-October-2022 | Grid Breakdown | 24.00 |
| Dayapar-SPV03 | Wind Three Renergy Private Limited | 04-October-2022 | Grid Breakdown | 24.00 |

| | | | | |
|---------------|------------------------------------|-----------------|----------------|-------|
| Dayapar-SPV03 | Wind Three Renergy Private Limited | 05-October-2022 | Grid Breakdown | 24.00 |
| Dayapar-SPV03 | Wind Three Renergy Private Limited | 06-October-2022 | Grid Breakdown | 24.00 |
| Dayapar-SPV03 | Wind Three Renergy Private Limited | 07-October-2022 | Grid Breakdown | 24.00 |
| Dayapar-SPV03 | Wind Three Renergy Private Limited | 08-October-2022 | Grid Breakdown | 24.00 |
| Dayapar-SPV03 | Wind Three Renergy Private Limited | 09-October-2022 | Grid Breakdown | 24.00 |
| Dayapar-SPV03 | Wind Three Renergy Private Limited | 10-October-2022 | Grid Breakdown | 24.00 |
| Dayapar-SPV03 | Wind Three Renergy Private Limited | 11-October-2022 | Grid Breakdown | 24.00 |
| Dayapar-SPV03 | Wind Three Renergy Private Limited | 12-October-2022 | Grid Breakdown | 24.00 |
| Dayapar-SPV03 | Wind Three Renergy Private Limited | 13-October-2022 | Grid Breakdown | 24.00 |
| Dayapar-SPV03 | Wind Three Renergy Private Limited | 14-October-2022 | Grid Breakdown | 24.00 |
| Dayapar-SPV03 | Wind Three Renergy Private Limited | 15-October-2022 | Grid Breakdown | 24.00 |

| | | | | |
|---------------|------------------------------------|-----------------|----------------|-------|
| Dayapar-SPV03 | Wind Three Renergy Private Limited | 16-October-2022 | Grid Breakdown | 24.00 |
| Dayapar-SPV03 | Wind Three Renergy Private Limited | 17-October-2022 | Grid Breakdown | 24.00 |
| Dayapar-SPV03 | Wind Three Renergy Private Limited | 18-October-2022 | Grid Breakdown | 24.00 |
| Dayapar-SPV03 | Wind Three Renergy Private Limited | 19-October-2022 | Grid Breakdown | 24.00 |
| Dayapar-SPV03 | Wind Three Renergy Private Limited | 20-October-2022 | Grid Breakdown | 24.00 |
| Dayapar-SPV03 | Wind Three Renergy Private Limited | 21-October-2022 | Grid Breakdown | 24.00 |
| Dayapar-SPV03 | Wind Three Renergy Private Limited | 22-October-2022 | Grid Breakdown | 24.00 |
| Dayapar-SPV03 | Wind Three Renergy Private Limited | 23-October-2022 | Grid Breakdown | 24.00 |
| Dayapar-SPV03 | Wind Three Renergy Private Limited | 24-October-2022 | Grid Breakdown | 24.00 |
| Dayapar-SPV03 | Wind Three Renergy Private Limited | 25-October-2022 | Grid Breakdown | 24.00 |
| Dayapar-SPV03 | Wind Three Renergy Private Limited | 26-October-2022 | Grid Breakdown | 24.00 |

| | | | | |
|---------------|------------------------------------|------------------|----------------|-------|
| Dayapar-SPV03 | Wind Three Renergy Private Limited | 27-October-2022 | Grid Breakdown | 24.00 |
| Dayapar-SPV03 | Wind Three Renergy Private Limited | 28-October-2022 | Grid Breakdown | 24.00 |
| Dayapar-SPV03 | Wind Three Renergy Private Limited | 29-October-2022 | Grid Breakdown | 24.00 |
| Dayapar-SPV03 | Wind Three Renergy Private Limited | 30-October-2022 | Grid Breakdown | 24.00 |
| Dayapar-SPV03 | Wind Three Renergy Private Limited | 31-October-2022 | Grid Breakdown | 24.00 |
| Dayapar-SPV03 | Wind Three Renergy Private Limited | 01-November-2022 | Grid Breakdown | 24.00 |
| Dayapar-SPV03 | Wind Three Renergy Private Limited | 02-November-2022 | Grid Breakdown | 24.00 |
| Dayapar-SPV03 | Wind Three Renergy Private Limited | 03-November-2022 | Grid Breakdown | 24.00 |
| Dayapar-SPV03 | Wind Three Renergy Private Limited | 04-November-2022 | Grid Breakdown | 24.00 |
| Dayapar-SPV03 | Wind Three Renergy Private Limited | 05-November-2022 | Grid Breakdown | 24.00 |
| Dayapar-SPV03 | Wind Three Renergy Private Limited | 06-November-2022 | Grid Breakdown | 24.00 |

| | | | | |
|---------------|------------------------------------|------------------|----------------|-------|
| Dayapar-SPV03 | Wind Three Renergy Private Limited | 07-November-2022 | Grid Breakdown | 24.00 |
| Dayapar-SPV03 | Wind Three Renergy Private Limited | 08-November-2022 | Grid Breakdown | 24.00 |
| Dayapar-SPV03 | Wind Three Renergy Private Limited | 09-November-2022 | Grid Breakdown | 24.00 |
| Dayapar-SPV03 | Wind Three Renergy Private Limited | 10-November-2022 | Grid Breakdown | 24.00 |
| Dayapar-SPV03 | Wind Three Renergy Private Limited | 11-November-2022 | Grid Breakdown | 24.00 |
| Dayapar-SPV03 | Wind Three Renergy Private Limited | 12-November-2022 | Grid Breakdown | 24.00 |
| Dayapar-SPV03 | Wind Three Renergy Private Limited | 13-November-2022 | Grid Breakdown | 24.00 |
| Dayapar-SPV03 | Wind Three Renergy Private Limited | 14-November-2022 | Grid Breakdown | 24.00 |
| Dayapar-SPV03 | Wind Three Renergy Private Limited | 15-November-2022 | Grid Breakdown | 24.00 |
| Dayapar-SPV03 | Wind Three Renergy Private Limited | 16-November-2022 | Grid Breakdown | 24.00 |
| Dayapar-SPV03 | Wind Three Renergy Private Limited | 17-November-2022 | Grid Breakdown | 24.00 |

| | | | | |
|---------------|------------------------------------|------------------|----------------|-------|
| Dayapar-SPV03 | Wind Three Renergy Private Limited | 18-November-2022 | Grid Breakdown | 24.00 |
| Dayapar-SPV03 | Wind Three Renergy Private Limited | 19-November-2022 | Grid Breakdown | 24.00 |
| Dayapar-SPV03 | Wind Three Renergy Private Limited | 20-November-2022 | Grid Breakdown | 24.00 |
| Dayapar-SPV03 | Wind Three Renergy Private Limited | 21-November-2022 | Grid Breakdown | 24.00 |
| Dayapar-SPV03 | Wind Three Renergy Private Limited | 22-November-2022 | Grid Breakdown | 24.00 |
| Dayapar-SPV03 | Wind Three Renergy Private Limited | 23-November-2022 | Grid Breakdown | 24.00 |
| Dayapar-SPV03 | Wind Three Renergy Private Limited | 24-November-2022 | Grid Breakdown | 24.00 |
| Dayapar-SPV03 | Wind Three Renergy Private Limited | 25-November-2022 | Grid Breakdown | 24.00 |
| Dayapar-SPV03 | Wind Three Renergy Private Limited | 26-November-2022 | Grid Breakdown | 24.00 |
| Dayapar-SPV03 | Wind Three Renergy Private Limited | 27-November-2022 | Grid Breakdown | 24.00 |
| Dayapar-SPV03 | Wind Three Renergy Private Limited | 28-November-2022 | Grid Breakdown | 24.00 |

| | | | | |
|---------------|------------------------------------|------------------|----------------|-------|
| Dayapar-SPV03 | Wind Three Renergy Private Limited | 29-November-2022 | Grid Breakdown | 24.00 |
| Dayapar-SPV03 | Wind Three Renergy Private Limited | 30-November-2022 | Grid Breakdown | 24.00 |
| Total | -- | -- | -- | 2,928 |

Summary of Major Breakdown details as under –

| Site Name | Duration | Breakdown Hours (HH:MM) | Breakdown Hours (in %) |
|-----------|-------------------------------------|-------------------------|------------------------|
| SPV 01 | 01-October-2022 to 30-November-2022 | 1,464 | 18.21% |
| SPV 03 | 01-October-2022 to 30-November-2022 | 1,464 | 18.21% |

APPENDIX III: SDG CONTRIBUTION

| Months | Total Net Generation (MWh) | Emission Reductions (tCO ₂) | Trainings (Nos) |
|--------------------------------------|----------------------------|---|-----------------|
| | SDG 7 | SDG 13 | SDG 8 |
| 01-October-2022 to 31-October-2022 | 7273.83 | 6814.12 | - |
| 01-November-2022 to 30-November-2022 | 4553.02 | 4265.26 | - |
| 01-December-2022 to 31-December-2022 | 22192.83 | 20790.24 | - |
| 01-January-2023 to 31-January-2023 | 36319.43 | 34024.04 | 1 |
| 01-February-2023 to 28-February-2023 | 21918.69 | 20533.42 | - |
| 01-March-2023 to 31-March-2023 | 28228.50 | 26444.46 | - |
| 01-April-2023 to 30-April-2023 | 34777.11 | 32579.19 | - |
| 01-May-2023 to 31-May-2023 | 46328.02 | 43400.09 | - |
| 01-June-2023 to 30-June-2023 | 46480.91 | 43543.31 | - |
| 01-July-2023 to 31-July-2023 | 49540.93 | 46409.95 | 1 |
| 01-August-2023 to 31-August-2023 | 85982.29 | 80548.21 | - |
| Total | 383,595.60 | 359,352.35 | 2 |