



Gold Standard[®]
for the Global Goals

TEMPLATE

MONITORING REPORT

PUBLICATION DATE 14.10.2020

VERSION v.1.1

RELATED SUPPORT – TEMPLATE GUIDE Monitoring Report v. 1.1

This document contains the following Sections

Key Project Information

SECTION A - Description of project

SECTION B - Implementation of project

SECTION C - Description of monitoring system applied by the project

SECTION D - Data and parameters

SECTION E - Calculation of SDG Impacts

SECTION F - Safeguards Reporting

SECTION G - Stakeholder inputs and legal disputes

KEY PROJECT INFORMATION

Key Project Information

GS ID (s) of Project (s)	GS4264
Title of the project (s) covered by monitoring report	Silivri WPP
Version number of the PDD/VPA-DD (s) applicable to this monitoring report	10
Version number of the monitoring report	5
Completion date of the monitoring report	03/02/2025
Date of project design certification	Design Certification Date: 30/05/2016 CP Renewal Date:08/09/2021
Date of Last Annual Report	17/12/2023
Monitoring period number	4 th Monitoring Period (1 st Monitoring Period of the 2 nd Crediting Period)
Duration of this monitoring period	20/08/2021 – 30/11/2023
Project Representative	1. Eksim Enerji A.Ş. 2. SILA DURAN sila@sekansanismanlik.com Sekans Danışmanlık
Host Country	Turkey
Activity Requirements applied	<input type="checkbox"/> Community Services Activities <input checked="" type="checkbox"/> Renewable Energy Activities <input type="checkbox"/> Land Use and Forestry Activities/Risks & Capacities <input type="checkbox"/> N/A
Methodology (ies) applied and version number	ACM0002 "Grid-connected electricity generation from renewable sources", Version 20.0
Product Requirements applied	<input checked="" type="checkbox"/> GHG Emissions Reduction & Sequestration <input type="checkbox"/> Renewable Energy Label <input type="checkbox"/> N/A

Table 1 - Sustainable Development Contributions Achieved

Sustainable Development Goals Targeted	SDG Impact	Amount Achieved	Units/ Products
SDG 7 Ensure access to affordable, reliable, MWh of renewable sustainable and modern energy generated energy for all		378,227.25	MWh
SDG 8 Promote sustained, inclusive and sustainable economic growth, full and productive employment and decent work for all Decent Work and Economic Growth	Number of employments	17	Employees
SDG 13 Take urgent action to combat climate change and its impacts	Emission reductions	223,009 ¹	VERs

Table 2 – Product Vintages

		Amount Achieved
Start Dates	End Dates	VERs
20/08/2021	31/12/2021	35,874
01/01/2022	31/12/2022	97,717
01/01/2023	30/11/2023	89,418

¹ The emission reductions have been capped to the upper bound of the sensitivity analysis range (The emission reductions have been capped to 10% upper limit of amount estimated ex ante deducted) for the monitoring period as per Rule Clarification -ASSESSMENT APPROACH FOR REPORTING HIGHER EX-POST EMISSION REDUCTIONS.

The emission reductions have been capped to the upper bound of the sensitivity analysis range (the emission reductions have been capped to 10% upper limit of amount estimated ex ante) for the monitoring period as per Rule Clarification -ASSESSMENT APPROACH FOR REPORTING HIGHER EX-POST EMISSION REDUCTIONS.

SECTION A. DESCRIPTION OF PROJECT

A.1. General description of project

Eksim Enerji A.Ş. (hereafter referred as the "Project Owner") established Silivri Wind Power Plant, Turkey (hereafter referred to as the "Proposed Project" or "Silivri WPP") with an installed capacity of 45 MW in İstanbul Province, in Marmara Region of Turkey.

The purpose of the project is to produce renewable electricity and to contribute to Turkey's growing electricity demand through a sustainable and low carbon technology. The project displaces the same amount of electricity generated by fossil fired power plants; thereby helping reduce the weight of electricity generation by fossil-fired power plants in the national grid. The annual emission reduction estimated by the project is 88,834 tonnes of CO₂eq.

The project activity pursues both to contribute to providing energy needs of Turkey and to create local industry as well as providing employment. The project start date is 15/03/2013 as the date of agreement for equipment contract with Nordex. The construction start date is 21/10/2013 and the start date of commissioning of the project is 20/08/2014.

Total installed power generation capacity of the project is 45 MW, consisting of 18 wind turbines, with an estimated power supply to the grid of 143,327 MWh of net electricity generation per annum, via a 154 kV HV transmission line to substation Silivri TM. The Project includes gearless, variable speed, variable pitch control Nordex N100 wind turbines with an output of 2.5 MW and 99.8 m rotor diameter.

The installed capacity of the project has increased to 63 MWm/63MWe. As the registered capacity (45MW) of the project is considered, the electricity generation and the emission reduction of the added units are ignored for this monitoring period. The added units are T11, T19, T20, T22 and T23.

The annual estimated electricity generation of the project is 143,327 MWh. The Silivri WPP is connected via a transmission line to the 154 kV Silivri Transformer Station and the generated electricity will be supplied to Turkey’s national electricity grid. The project boundary encompasses the physical, geographical site of the renewable generation source. The wind power plant with all installation is the project boundary in accordance with ACM0002 “Grid-connected electricity generation from renewable sources”, Version 20.0.

During its operation during this monitoring period, the actualized net electricity generation is 378,227.25 MWh. The actual emission reduction has been calculated as 234,423 tonnes CO2 for this monitoring period. However, it’s been capped to the limit 223,009 tonnes CO2.

The project has produced positive environmental benefits such as displacing the electricity generated by fossil fuel fired power plants by utilizing the renewable resources to avoid environmental pollution and GHG emissions.

A.2. Location of project

The project site is located about 20 km northeast of Silivri District in Istanbul, Turkey and is situated on several hills, between Fenerköy and Gazitepe Village. The closest settlement is Fenerköy village by 2.2 km. The turbine towers were built in a 5 km long strip placed approximately 300-400 m apart.

Table 3- Turbine Coordinates

Wind Turbine No.	Latitude (N)	Longitude (E)
T1	41° 10' 19.2288"	28° 15' 30.7723"
T2	41° 10' 16.8816"	28° 15' 42.7736"
T3	41° 10' 15.1212"	28° 15' 55.4856"
T4	41° 10' 14.3760"	28° 16' 36.5837"
T5	41° 10' 06.9600"	28° 16' 38.7999"
T6	41° 10' 13.6488"	28° 17' 18.7547"
T7	41° 10' 00.6852"	28° 17' 20.7751"

T8	41° 09' 53.9388"	28° 17' 26.6504"
T9	41° 09' 48.0168"	28° 17' 34.3867"
T10	41° 09' 18.1836"	28° 17' 31.5264"
T11	41° 10' 27.7932"	28° 16' 31.3508"
T12	41° 09' 17.8056"	28° 18' 10.6051"
T13	41° 09' 08.5356"	28° 18' 15.9560"
T14	41° 09' 03.8664"	28° 18' 24.5725"
T15	41° 09' 01.8648"	28° 18' 38.2183"
T16	41° 09' 01.4292"	28° 19' 16.3491"
T17	41° 09' 15.8508"	28° 19' 28.2658"
T18	41° 09' 12.2832"	28° 19' 39.6063"
T19	41° 10' 20.55"	28° 14' 54.5352"
T20	41° 10' 20.2044"	28° 15' 8.8488"
T21	41° 10' 27.7968"	28° 16' 31.35"
T22	41° 10' 48.4176"	28° 16' 40.3788"
T23	41° 10' 30.9972"	28° 17' 13.128"



Figure 1. Project Location on Türkiye Map

A.3. Reference of applied methodology

Sectoral Scope: 01 Energy industries (renewable - / non-renewable sources)

Applied approved baseline and monitoring methodologies:

- Methodology: ACM0002: Grid-connected electricity generation from renewable sources - Version 20.0²

² <https://cdm.unfccc.int/UserManagement/FileStorage/AG07ZJQ3EXD42LT5YV9HR16M8KINPO>

The methodology refers to:

- Tool to calculate the emission factor for an electricity system, Version 07.0³
- Tool for the demonstration and assessment of additionality, Version 07.0.0⁴

A.4. Crediting period of project

The first crediting period is 7 years and renewable twice.

Start date of the first crediting period: 20/08/2014

End date of the first crediting period: 19/08/2021

Start date of the second crediting period: 20/08/2021

End date of the second crediting period: 19/08/2028

SECTION B. IMPLEMENTATION OF PROJECT

B.1. Description of implemented project

The proposed project activity involves the installation of 23 units of wind turbines with a total installed capacity of 63 MWm/63 MWe. The Silivri WPP consists of eighteen N100 turbines, each with a capacity of 2.5 MWm/2.5 MWe and five Nordex/N131 turbines, each having a capacity of 3.6 MWm/3.6 MWe.

Even though the installed capacity of the project in the generation license was 57.5 MW, the capacity of 45 MW has been in operation during the 1st monitoring period. Two turbines (T22 and T23) were added to the project on 11/01/2019 and they started their commercial operation. Finally, the generation license of the project was revised on 31/03/2017 and the installed capacity of the project has been raised to 60 MWm/45MWe with the revision. The commissioning of T11, T19 and T20 was realized on 25/10/2019. The installed capacity of each added turbine is 3.6MWm/0.1MWe. On 16/04/2020, the capacity increase has been approved by EMRA. Thus, the installed capacity of the project has increased to 63 MWm/63MWe. As the registered capacity

³ <https://cdm.unfccc.int/methodologies/PAMethodologies/tools/am-tool-07-v7.0.pdf>

⁴ <https://cdm.unfccc.int/methodologies/PAMethodologies/tools/am-tool-01-v7.0.0.pdf>

(45MW) of the project is considered, the electricity generation and the emission reduction of the added units are ignored.

For the aim of reaching the actual values derived from the registered capacity, the generation of the added turbines taken from SCADA system of the project activity will be subtracted from the total generated amount which is monitored through the EPIAS records. After the subtraction, the remaining amount (be adjusted net electricity supplied to the grid) would represent the generation of the registered capacity. This value will be calculated as below:

Adjusted net electricity supplied to the grid =
 $EG_{PJ,y}$ - Generation of Added Capacity Taken from the SCADA System⁵.

The total annual electricity generation of the project is 143,327 MWh/year. The net electricity generation during this monitoring period is MWh. The Silivri WPP is connected via a transmission line to the 154 kV Silivri Transformer Station and the generated electricity will be supplied to Turkey's national electricity grid.

In addition, according to EMRA, the average lifetime of wind turbines is between 20 and 25 years and it is accepted as 20 years for financial analysis of proposed project to be conservative side.

The start date of the operation is 20/08/2014 as the date of implementation of the first ten wind turbines.

Important milestones of the project activity are summarized as follows:

Table 4 – Milestones

Activity	Date
EIA Not Required Certificate	11.06.2009

⁵This calculation was approved during the 3rd Verification of the Project Activity.

Agreement with Carbon consultant	06.01.2012
Silivri Wind Data Analysis and Energy Production Generation Assessment Report	03.02.2012
Issuance of the License	29.04.2013
Agreement with Equipment provider	15.03.2013
Loan Proposal Date	29.03.2013
Date for start of construction	21.10.2013
1st phased implementation of the 10 wind turbines.	20.08.2014
Start date of operation	20.08.2014
Start date of the 1 st Monitoring Period	20.08.2014
Start date of the 1 st Crediting Period	20.08.2014
2nd phased implementation of the 5 wind turbines	04.09.2014
3rd phased implementation of the 3 wind turbines.	19.09.2014
Date of project registration	30.05.2016
End date of the 1 st Monitoring Period	31.03.2017
Start date of 2 nd Monitoring Period	01.04.2017
Revision of the generation license (increase to installed capacity of 60 MW)	31.03.2017
Commissioning of 2 turbines (T22 and T23)	11.01.2019
End date of 2 nd Monitoring Period	31.07.2019
Start date of 3 rd Monitoring Period	01.08.2019
Commissioning of 3 turbines (T11, T19, T20)	25.10.2019
End date of 3 rd Monitoring Period	31.07.2021
End date of the 1 st Crediting Period	19.08.2021
Start date of the 2 nd Crediting Period	20.08.2021
4 th Monitoring Period	20.08.2021 - 30.11.2023
End date of the 2 nd Crediting Period	19.08.2028

Please see below the technical specifications of the installed turbines:

Table 5 - Technical specifications of the installed turbines

Parameter	Unit	Model of Turbine	
		Nordex N100	Nordex N131 (added turbines)
Type	-	steel tubular, conical shape	steel tubular, conical shape
Rotor Diameter	m	99.8	131
Rated Power	kW	2500	3600
Swept area	m ²	7823	13478
Hub height	m	80	112

Cut-in / cut-out wind speed	m/s	3.0 - 25.0	3.0 - 20.0
------------------------------------	-----	------------	------------

Power meters are as follows:

Specifications	Main meter	Spare Meter
Manufacturer	EMH	EMH
Serial No:	11590270	11590284
First Index Date of the Meters	16/08/2022	16/08/2022
Accuracy Class	0.2S	0.2S

B.1.1. Forward Action Requests

FARs from CP renewal:

FAR # 1: Remote Site Visit of VVB shall be resumed when Covid-19 situation eases.

- Physical site visit was conducted for this MP on 13/12/2023

FAR # 2: Last verification and design renewal validation has been conducted by the same VVB. In case of next verification to be performed by ReCarbon as well, VVB shall consider the GS rule update of Validation and Verification by the same VVB.

- VVB considered the GS rule update of Validation and Verification by the same VVB. The team of the verification is different than the previous process.

FAR # 3: Delay in the completion of re-validation beyond the last date of current certification cycle shall result in a reduction of any issuance of Certified Products and/or Impact Statements available during following certification cycle. Thus, PD can only claim realized ER from 12 Aug 2021 in CP2.

- MP has been initiated as from the start of the second CP, 20 Aug 2021 in CP2.

FARs from Pervios Performance Review:

FAR # 1: On-site Audit shall be resumed by VVB when Covid situation eases.

On-site audit has been executed.

FAR #2: Next Verifying VVB shall consider Rule Clarification dated 04/07/2022, "Assessment Approach for Reporting Higher Ex-post Emission Reductions" in case of Increase In realized energy generation and claimed ERs. As per paras 2.1.3 and 2.1.4, the ERs will be capped by the upper bound of the sensitivity analysis range for MP. As per para 2.1.5, If higher emission reductions reported due to the same cause consecutively, further analysis shall be conducted.

ERs have been capped by the upper bound of the sensitivity analysis range for MP.

FAR #3: During next CP, regular carcass/nest observation activities on site shall be performed and recorded.

Monitoring records of the assigned technician carcass/nest in the Project area have been submitted to the VVB.

B.2. Post-Design Certification changes

B.2.1. Temporary deviations from the approved Monitoring & Reporting Plan, methodology or standardized baseline

There are no project or methodology deviations applied during this monitoring period.

B.2.2. Corrections

There are no corrections applied during this monitoring period.

B.2.3. Changes to start date of crediting period

There are no changes applied to the start date of the crediting period during this monitoring period.

B.2.4. Permanent changes from the Design Certified monitoring plan, applied methodology or applied standardized baseline

There are no changes applied to the start date of the crediting period during this monitoring period.

B.2.5. Changes to project design of approved project

There are no changes to project design during this monitoring period.

SECTION C. DESCRIPTION OF MONITORING SYSTEM APPLIED BY THE PROJECT

The objective of the monitoring plan is to ensure the complete, consistent, clear, and accurate monitoring and calculation of the emission reductions during the whole crediting period. The Project Owner is responsible for the implementation of the monitoring plan.

The Project Owner is responsible for the overall management of the monitoring procedures including recording, data collection, calculating emission reductions and project emissions.

Please see below the management structure for the plant operation:

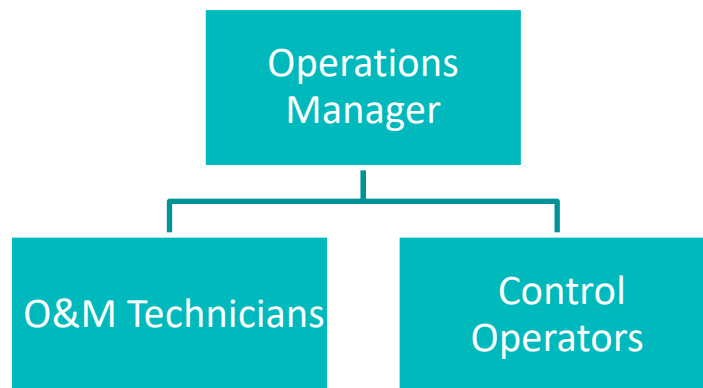


Figure 2. The management structure for the plant operation

The Operations Manager is responsible for the whole management of the Project Activity and the O&M technicians and control operators are responsible for the implementation of the Project Activity. In addition to Operations Manager there are six O&M technicians, four control technicians, one information staff, one O&M technician from turbine supplier working for the plant and four security staff. There are 17 employees working for Project Owner at the site.

All monitoring procedures and requirements of the proposed project activity is in accordance with the methodology ACM0002 "Grid-connected electricity generation from renewable sources" Version 20.0.

Metering

The main source for electricity generation metering is the TEIAS meters installed and sealed by TEIAS. Since the TEIAS meters are sealed by TEIAS and are also the basis of invoicing, high accuracy and reliability is ensured. Also, the TEIAS meters have the ability to measure both the amount of electricity exported to the grid as well as the amount of electricity imported by the project activity, which provides an accurate and reliable measurement of the net electricity.

The old main meter and back-up meter were "EMH" branded. The serial numbers were "4241393" and "4241394" for the main meter and spare meter, respectively. Both meters had an accuracy class of 0.2S.

The existing main meter and back-up meter are "EMH" branded. The serial numbers are "11590270" and "11590284" for the main meter and spare meter, respectively. Both meters have an accuracy class of 0.2S. Old meters were replaced with existing ones on 16/08/2022. This date is also the calibration and test date of the existing meters. In addition, the meters are calibrated every ten years. Additionally, the meters are tested every two years⁶.

The Project Owner enters the expected electricity generation on daily basis to the website of EPIAS which is the financial settlement center of TEIAS. The website of EPIAS is accessible to project owner with their unique user ID and password. The difference between the expected and generated electricity (imbalance) is costed the project owner at the end of each month. The electricity generation data is reported monthly. EPIAS records are used as the source of net generated electricity value and meter reading forms or OSF forms issued by TEIAS are used for the crosscheck.

Meter readings

Once a month, the project participant performs data readings. The monthly results are recorded by the project participant both manually and electronically.

⁶ Please see Clause 9: [Measuring instruments directive](#)

Data storage

Data is stored electronically, during the crediting period and at least two years after the last issuance of credits for the wind farm project activity in the concerning crediting period. The Project Participant is responsible for storage of data received from the measuring devices.

Responsibilities for monitoring

The Project Owner is responsible for the operation and maintenance of the project activity and the installed equipment. The project owner is also responsible for the administration of the data, setting up a VER team who is responsible for monitoring all data required to estimate emission reductions. Emission reductions are calculated by the VER consultant, Sekans.

Quality assurance and quality control

The main source of measurement is the TEIAS meters, which are sealed by TEIAS and since it is subject to monthly invoicing high reliability and accuracy is secured. In accordance with the requirements of TEIAS, there are two meters installed at the site where one is called the main meter and the other one is as secondary meter. TEIAS is the main responsible for calibration and maintenance of the devices. TEIAS performs the necessary maintenance and calibration. Since the electricity generation data is used for the billing and accounting between TEIAS and the project participant, the data is of high quality.

The primary source is the EPIAS records. Net electricity exported is crosschecked with Meter Reading Forms. EPIAS is the financial settlement center of TEIAS. The Meter Reading Forms are filled in by the project owner and approved by the governmental officers. Additionally, remote reading by the governmental body is also available. The website of EPIAS is accessible to Project Owner with their unique user ID and password. Once accessed, the Project Owner is able to call electricity generation for invoicing TEIAS. The electricity generation data is reported on a monthly basis.

Corrective actions and emergency preparedness

The Project Owner regularly checks the monitoring system for errors. In the case of errors, corrective actions are undertaken by the Project Participant, or if required, by the supplier of the monitoring equipment.

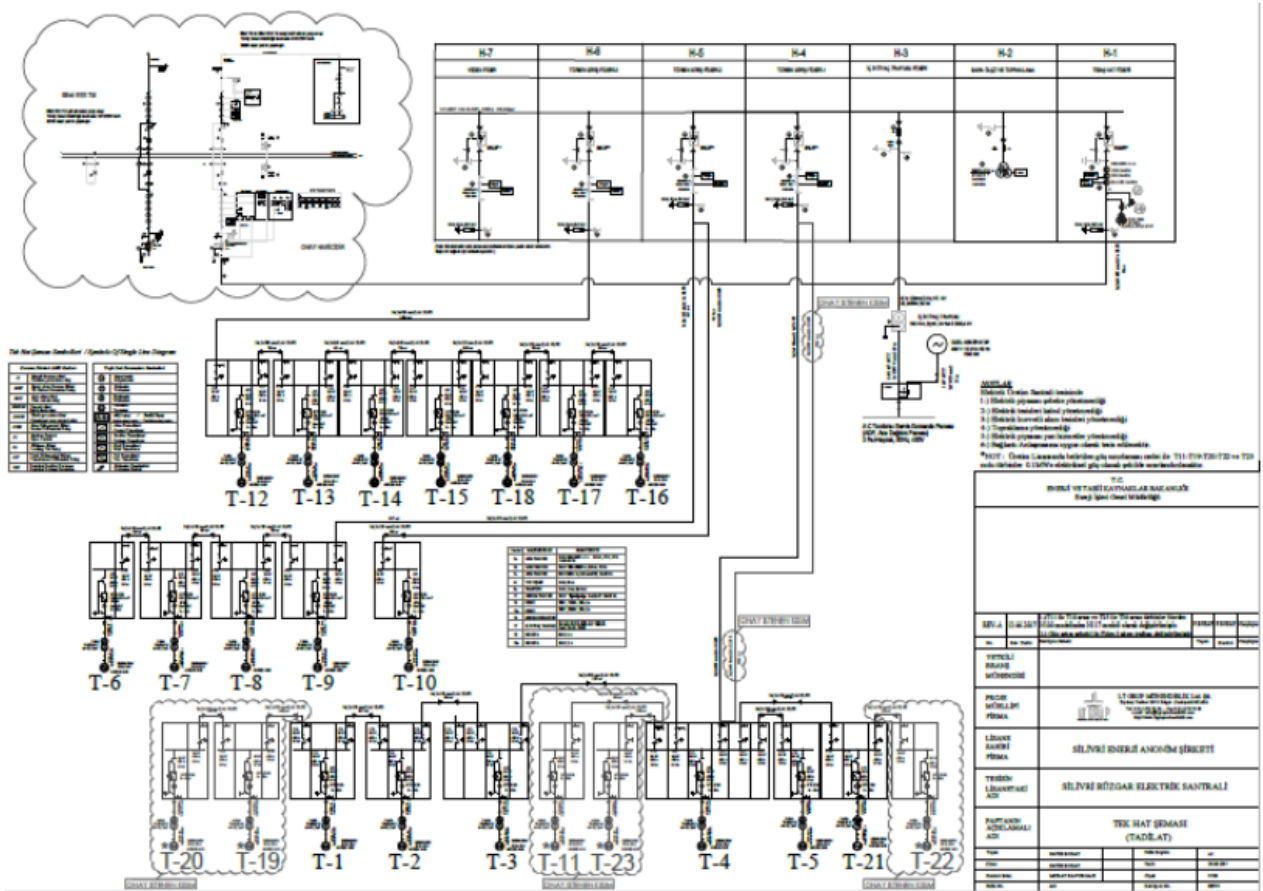


Figure 2. The single line diagram of the Project Activity

Data is stored electronically, during the crediting period and at least two years after the last issuance of credits for the wind farm project activity in the concerning crediting period. The Project Owner is responsible for storage of data received from the measuring devices. The site manager is responsible for data aggregation.

During the monitoring period, no breakdown or serious maintenance work has been experienced. Ordinary maintenance activities have been executed.

SECTION D. DATA AND PARAMETERS

D.1. Data and parameters fixed ex ante or at renewal of crediting period

Relevant SDG Indicator/Safeguarding Principle	13.3.2 Number of countries that have communicated the strengthening of institutional, systemic and individual capacity-building to implement adaptation, mitigation and technology transfer, and development actions
Data / Parameter	EF_{grid, CM, y}
Unit	tCO ₂ /MWh
Description	Emission factor of the Turkish grid determined ex-ante. It's been published by the Ministry of Energy for 2018 on 03/09/2020.
Source of data	Ministry of Energy. Please see: https://enerjiapi.enerji.gov.tr/Media/Dizin/ETKB/Duyuru/ar//0c6b62ea-bf2f-4fea-b9b3-28bc6f48ddf2_Bilgi_Formu_-_Web_Sitesi.pdf
Value(s) applied	0.6198
Choice of data or measurement methods and procedures	Official data
Purpose of data/parameter	Calculation of baseline emissions and to demonstrate contribution to the SDG13-13.2.2
Additional comments	The emission factor of the Turkish grid is calculated ex-ante and has been fixed for the first crediting period.

D.2. Data and parameters monitored

Relevant SDG Indicator/Safeguarding Principle	7.2.1Renewable energy share in the total final energy consumption
Data / Parameter	EGPJ, grid, y
Unit	MWh/yr
Description	Quantity of net electricity generation supplied by the project plant/unit to the grid in year y

Source of data	Direct measurement ⁷																	
Value(s) applied	<table border="1"> <thead> <tr> <th>Period</th> <th colspan="2">Generation (MWh)</th> </tr> </thead> <tbody> <tr> <td>20.08.2021-31.12.2021</td> <td colspan="2">65,825.35</td> </tr> <tr> <td>01.01.2022-31.12.2022</td> <td colspan="2">160,296.78</td> </tr> <tr> <td>01.01.2023-30.11.2023</td> <td colspan="2">152,105.12</td> </tr> <tr> <td>Total</td> <td colspan="2">378,227.25</td> </tr> </tbody> </table>			Period	Generation (MWh)		20.08.2021-31.12.2021	65,825.35		01.01.2022-31.12.2022	160,296.78		01.01.2023-30.11.2023	152,105.12		Total	378,227.25	
	Period	Generation (MWh)																
	20.08.2021-31.12.2021	65,825.35																
	01.01.2022-31.12.2022	160,296.78																
	01.01.2023-30.11.2023	152,105.12																
Total	378,227.25																	
<p>The net electricity is measured continuously by a power meter at the grid interface and recorded monthly. EPIAS records are the source of the exact electricity generation of the project and the imports from the grid. The quantity of net electricity delivered to the grid is cross checked with the meter reading records (OSF forms-OSOS) which are provided to the company by TEİAŞ.</p> <p>Net electricity generation supplied by the project plant to the grid [MWh] = Electricity supplied to the grid [MWh] - Electricity consumption from the grid [MWh]</p> <p>Power meters (current meters):</p> <table border="1"> <thead> <tr> <th>Specifications</th> <th>Main meter</th> <th>Spare Meter</th> </tr> </thead> <tbody> <tr> <td>Manufacturer</td> <td>EMH</td> <td>EMH</td> </tr> <tr> <td>Serial No:</td> <td>11590270</td> <td>11590284</td> </tr> <tr> <td>First Index Date of the Meters</td> <td>16/08/2022</td> <td>16/08/2022</td> </tr> <tr> <td>Accuracy Class</td> <td>0.2S</td> <td>0.2S</td> </tr> </tbody> </table>			Specifications	Main meter	Spare Meter	Manufacturer	EMH	EMH	Serial No:	11590270	11590284	First Index Date of the Meters	16/08/2022	16/08/2022	Accuracy Class	0.2S	0.2S	
Specifications	Main meter	Spare Meter																
Manufacturer	EMH	EMH																
Serial No:	11590270	11590284																
First Index Date of the Meters	16/08/2022	16/08/2022																
Accuracy Class	0.2S	0.2S																

⁷ EPIAS records

	Power meters that were changed on 16/08/2022 ⁸												
	<table border="1"> <thead> <tr> <th>Specifications</th> <th>Main meter</th> <th>Spare Meter</th> </tr> </thead> <tbody> <tr> <td>Manufacturer</td> <td>EMH</td> <td>EMH</td> </tr> <tr> <td>Serial No:</td> <td>4241393</td> <td>4241394</td> </tr> <tr> <td>Accuracy Class</td> <td>0.2S</td> <td>0.2S</td> </tr> </tbody> </table>	Specifications	Main meter	Spare Meter	Manufacturer	EMH	EMH	Serial No:	4241393	4241394	Accuracy Class	0.2S	0.2S
Specifications	Main meter	Spare Meter											
Manufacturer	EMH	EMH											
Serial No:	4241393	4241394											
Accuracy Class	0.2S	0.2S											
Monitoring frequency	Continuous measurement and at least monthly recording												
QA/QC procedures	<p>Cross check measurements result with records for sold electricity. The electricity meters will be subject to a regular maintenance and testing regime by the grid owner to ensure accuracy.</p> <p>The calibration of meters, including the frequency of calibration, should be done in accordance with national standards or requirements set by the meter supplier or requirements set by the grid operators. The accuracy class of the meters should be in accordance with the stipulation of the meter supplier and/or as per the requirements set by the grid operators or national requirements.</p> <ul style="list-style-type: none"> • Measurements are undertaken using energy meters. • The periodical calibration or maintenance is under the responsibility of TEİAŞ. The calibration of meters is done every ten years. The meter tests are carried out every two years. Since TEİAŞ meters are sealed by TEİAŞ, the project proponent cannot intervene with the devices. • The net electricity export/supplied to a grid is the difference between the measured quantities of the grid electricity export and the import. 												
Purpose of data	<p>Calculation of emission reductions</p> <p>SDG 7.2. By 2030, increase substantially the share of renewable energy in the global energy mix</p>												
Additional comments	-												

⁸ The Meter Change Protocol is available to the VVB.

Relevant SDG Indicator/Safeguarding Principle	13.3.2 Number of countries that have communicated the strengthening of institutional, systemic and individual capacity-building to implement adaptation, mitigation and technology transfer, and development actions											
Data / Parameter	ER_y											
Unit	tCO2/y											
Description	Emission reductions by the project activity in year y (tCO2/yr) In accordance with ACM0002, baseline emissions include CO2 from electricity generation in powerplants that are displaced due to the project activity. And baseline emissions correspond to emission reductions and are calculated as the net electricity generated by the project activity, multiplied with combined margin CO2 emission factor for grid connected power generation in year y.											
Source of data	Both measured and calculated. Emission reductions will be calculated as considering the EPIAS records for the net electricity generated and the emission factor for the grid, 0.6198 tCO2/MWh, published by the Ministry of Energy											
Value(s) applied	<table border="1"> <thead> <tr> <th>Period</th> <th>Emissions (tCO2)</th> </tr> </thead> <tbody> <tr> <td>20.08.2021-31.12.2021</td> <td>35,874</td> </tr> <tr> <td>01.01.2022-31.12.2022</td> <td>97,717</td> </tr> <tr> <td>01.01.2023-30.11.2023</td> <td>89,418</td> </tr> <tr> <td>Total</td> <td>223,009</td> </tr> </tbody> </table>		Period	Emissions (tCO2)	20.08.2021-31.12.2021	35,874	01.01.2022-31.12.2022	97,717	01.01.2023-30.11.2023	89,418	Total	223,009
Period	Emissions (tCO2)											
20.08.2021-31.12.2021	35,874											
01.01.2022-31.12.2022	97,717											
01.01.2023-30.11.2023	89,418											
Total	223,009											
Measurement methods and procedures	Emission reductions are calculated as considering the EPIAS records for the net electricity generated and the emission factor for the grid. Please see section E for the details.											
Monitoring frequency	Yearly											
QA/QC procedures	<ul style="list-style-type: none"> • Measurements are undertaken using energy meters. • Concerning metering system accuracy, project participants have to comply with relevant national legislation. The project must ensure that the metering devices are in line with the technical requirements which are set out by the Communiqué for Metering Devices to be used in the Electricity Market, which describes the minimum accuracy requirement the metering devices have to fulfil, which are categorized according to the installed capacity. Maintenance and calibration of TEİAŞ 											

	<p>meters will be carried out according to the System Usage Agreement. The calibration of meters is done every ten years. The meter tests are carried out every two years. Since TEİAŞ meters will be sealed by TEİAŞ, the project proponent cannot intervene with the devices.</p>
Purpose of data	<p>Calculation of combined margin CO2 emission factor and thus the baseline emissions-to demonstrate contribution to SDG Target 13.3.: Improve education, awareness-raising and human and institutional capacity on climate change mitigation, adaptation, impact reduction and early warning</p>
Additional comments	-

Relevant SDG Indicator/Safeguarding Principle	8.5.2. Unemployment rate, by sex, age and persons with disabilities
Data / Parameter	Number of employment
Unit	Number
Description	Number of people permanently working for the operation of the project
Source of data	Social Security System (SGK)
Value(s) applied	17 9 employees are local.
Measurement methods and procedures	Social Security System (SGK) records
Monitoring frequency	Yearly
QA/QC procedures	SGK records of employees are provided during each monitoring period.
Purpose of data	SDG 8.5.By 2030, achieve full and productive employment and decent work for all women and men, including for young people and persons with disabilities, and equal pay for work of equal value
Additional comment	-

Data / Parameter	a) Number of employees to be trained for the construction and operation of the plant
-------------------------	---

	b) Fair wage, working hours and occupational injuries														
Unit	a) N/A b) N/A														
Description	a) The project proponent aims for improvement of safety for labour providers. The workers were benefit from trainings on construction health and safety. b) The social security conditions provided to the employees.														
Source of data	a) The number of trainings and attendance of employees have been monitored by documents (Training Records). b) Social Security Records														
Value(s) applied	<p>a) Training and attendance certificates have been provided to the VVB. All employees have been trained.</p> <table border="1"> <thead> <tr> <th>Date</th> <th>Training</th> </tr> </thead> <tbody> <tr> <td>11/08/2021</td> <td>Working at Heights</td> </tr> <tr> <td>28/06/2022</td> <td>PLARAD Tightening and Tensioning Training</td> </tr> <tr> <td>06/10/2022</td> <td>Maintenance Training</td> </tr> <tr> <td>24/01/2022</td> <td>First Aid</td> </tr> <tr> <td>13-14/02/2023</td> <td>Health and Safety</td> </tr> <tr> <td>26/04/2023</td> <td>Operation of Ladder</td> </tr> </tbody> </table> <p>b) Social Security Records</p>	Date	Training	11/08/2021	Working at Heights	28/06/2022	PLARAD Tightening and Tensioning Training	06/10/2022	Maintenance Training	24/01/2022	First Aid	13-14/02/2023	Health and Safety	26/04/2023	Operation of Ladder
Date	Training														
11/08/2021	Working at Heights														
28/06/2022	PLARAD Tightening and Tensioning Training														
06/10/2022	Maintenance Training														
24/01/2022	First Aid														
13-14/02/2023	Health and Safety														
26/04/2023	Operation of Ladder														
Measurement methods and procedures	Social Security Records and Training Records														
Monitoring frequency	Yearly														
QA/QC procedures	N/A														
Purpose of data	Monitoring the trainings and working conditions to justify contribution to SDG 8.8. Protect labour rights and promote safe and secure working environments for all workers, including migrant workers, in particular women migrants, and those in precarious employment														
Additional comment	-														

D.3. Comparison of monitored parameters with last monitoring period

Since the project is not community service project, this section is non-applicable.

D.4. Implementation of sampling plan

N/A

SECTION E. CALCULATION OF SDG IMPACTS

E.1. Calculation of baseline value or estimation of baseline situation of each SDG Impact

SDG 13

According to the methodology baseline emissions include only CO₂ emissions from electricity generation in fossil fuel fired power plants that are displaced due to the project activity. The methodology assumes that all project electricity generation above baseline levels would have been generated by existing grid-connected power plants and the addition of new grid-connected power plants. The baseline emissions are calculated as follows:

$$BE_y = EG_{PJ,grid,y} * EF_{grid,CM,y}$$

where:

BE _y	Baseline emissions in year y (tCO ₂)
EG _{PJ,grid,y}	Quantity of net electricity supplied to the grid as a result of the implementation of the CDM project activity in year y (MWh)
EF _{grid,CM,y}	Combined margin CO ₂ emission factor for grid connected power generation in year y calculated by using the latest version of the "Tool to calculate the emission factor for an electricity system" (tCO ₂ /MWh)

Since the registered capacity of the project activity is different from the installed capacity due to design change, the baseline emissions and thus emissions reductions are based on the 'adjusted net electricity supplied to the grid'. As the registered capacity (45MW) of the project is considered, the electricity generation and the emission reduction of the added units are ignored. This value is calculated as below:

Adjusted net electricity supplied to the grid = $EG_{PJ,y}$ - Generation of Added Capacity Taken From the SCADA System⁹.

For the aim of reaching the actual values derived from the registered capacity, the generation of the added turbines taken from SCADA system of the project activity is subtracted from the total generated amount which is monitored through the EPIAS records. After the subtraction, the remaining amount (be adjusted net electricity supplied to the grid) represents the generation of the registered capacity.

$$BE_y = 378,227.25 \text{ MWh} * 0.6198 \text{ tCO}_2/\text{MWh} = 234,423 \text{ tCO}_2$$

However, the emission reductions have been capped to 223,009 tCO₂ as per ASSESSMENT APPROACH FOR REPORTING HIGHER EX-POST EMISSION REDUCTIONS.

Table 6 - Baseline Emissions

⁹This calculation was approved during the 2nd Verification of the Project Activity.

Month	(A) Electricity supplied to the grid [MWh]	(B) Electricity consumed from the grid [MWh]	(C) = (A) - (B) EG (ID 8) Net electricity supplied to the grid [MWh]	EF [tCO ₂ / MWh]	Baseline emission: ER = EG * EF [t CO ₂ -eq]	Adjusted net electricity supplied to the grid [MWh] (F) = (C) - (E)	Adjusted baseline emission: ER = EG * EF [t CO ₂ -eq]
Aug-21 (20/08/2021 - 31/08/2021)	7,113.96	17.07	7,096.89	0.6198	4,399	3,680.23	2,281
Sep-21	20,241.45	6.78	20,234.68	0.6198	12,541	14,010.91	8,684
Oct-21	26,321.85	2.87	26,318.97	0.6198	16,312	18,236.69	11,303
Nov-21	18,591.68	16.83	18,574.84	0.6198	11,513	12,954.42	8,029
Dec-21	24,315.15	6.49	24,308.65	0.6198	15,067	16,943.10	10,501
Jan-22	20,397.55	12.57	20,384.97	0.6198	12,635	14,195.50	8,798
Feb-22	16,497.89	9.22	16,488.67	0.6198	10,220	11,445.75	7,094
Mar-22	22,198.80	9.63	22,189.17	0.6198	13,753	15,420.29	9,557
Apr-22	16,862.31	19.96	16,842.35	0.6198	10,439	11,678.76	7,238
May-22	13,851.24	17.12	13,834.12	0.6198	8,574	9,687.04	6,004
Jun-22	19,513.77	6.64	19,507.13	0.6198	12,091	13,663.51	8,469
Jul-22	23,419.48	7.67	23,411.81	0.6198	14,511	16,391.70	10,160
Aug-22	20,356.30	13.49	20,342.81	0.6198	12,608	14,280.41	8,851
Sep-22	15,737.00	10.75	15,726.25	0.6198	9,747	10,875.14	6,740
Oct-22	22,817.20	13.85	22,803.35	0.6198	14,134	16,060.95	9,955
Nov-22	19,661.50	10.50	19,650.99	0.6198	12,180	13,843.56	8,580
Dec-22	18,178.65	11.92	18,166.73	0.6198	11,260	12,754.17	7,905
Jan-23	18,457.17	16.51	18,440.66	0.6198	11,430	12,902.37	7,997
Feb-23	19,624.98	9.79	19,615.19	0.6198	12,157	13,727.86	8,509
Mar-23	18,539.13	17.00	18,522.13	0.6198	11,480	13,016.69	8,068
Apr-23	14,356.21	18.59	14,337.62	0.6198	8,886	9,913.69	6,145
May-23	21,176.38	6.09	21,170.29	0.6198	13,121	14,765.41	9,152
Jun-23	19,655.26	10.49	19,644.77	0.6198	12,176	13,774.44	8,537
Jul-23	14,623.39	16.63	14,606.76	0.6198	9,053	10,079.48	6,247
Aug-23	29,259.42	5.74	29,253.68	0.6198	18,131	20,567.52	12,748
Sep-23	26,516.07	5.89	26,510.17	0.6198	16,431	18,678.09	11,577
Oct-23	17,061.45	13.94	17,047.51	0.6198	10,566	11,894.56	7,372
Nov-23 (01/11/2023 - 30/11/2023)	18,417.71	17.33	18,400.38	0.6198	11,405	12,785.03	7,924
2021 Vintage (20.08.2021- 31.12.2021)	96,584.08	50.05	96,534.03	0.6198	59,831	65,825.35	40,798
2022 Vintage (01.01.2022- 31.12.2022)	229,491.67	143.32	229,348.35	0.6198	142,150	160,296.78	99,351
2023 Vintage (01.01.2023- 30.11.2023)	217,687.15	138.00	217,549.15	0.6198	134,836	152,105.12	94,274
Total	543,762.90	331.37	543,431.54	0.6198	336,817	378,227.25	234,423

Month/Vintage	BEy	PEy	LEy	ERy	Amount estimated ex ante (tCO ₂ e)	Capped ERy (tCO ₂ e)
---------------	-----	-----	-----	-----	--	---------------------------------------

Aug-21 (20/08/2021 - 31/08/2021)	2,281	0	0	2,281		
Sep-21	8,684	0	0	8,684		
Oct-21	11,303	0	0	11,303		
Nov-21	8,029	0	0	8,029		
Dec-21	10,501	0	0	10,501		
Jan-22	8,798	0	0	8,798		
Feb-22	7,094	0	0	7,094		
Mar-22	9,557	0	0	9,557		
Apr-22	7,238	0	0	7,238		
May-22	6,004	0	0	6,004		
Jun-22	8,469	0	0	8,469		
Jul-22	10,160	0	0	10,160		
Aug-22	8,851	0	0	8,851		
Sep-22	6,740	0	0	6,740		
Oct-22	9,955	0	0	9,955		
Nov-22	8,580	0	0	8,580		
Dec-22	7,905	0	0	7,905		
Jan-23	7,997	0	0	7,997		
Feb-23	8,509	0	0	8,509		
Mar-23	8,068	0	0	8,068		
Apr-23	6,145	0	0	6,145		
May-23	9,152	0	0	9,152		
Jun-23	8,537	0	0	8,537		
Jul-23	6,247	0	0	6,247		
Aug-23	12,748	0	0	12,748		
Sep-23	11,577	0	0	11,577		
Oct-23	7,372	0	0	7,372		
Nov-23 (01/11/2023 - 30/11/2023)	7,924	0	0	7,924		
2021 Vintage (20.08.2021- 31.12.2021)	40,798	0	0	40,798	32,613	35,874
2022 Vintage (01.01.2022- 31.12.2022)	99,351	0	0	99,351	88,834	97,717
2023 Vintage (01.01.2023- 30.11.2023)	94,274	0	0	94,274	81,289	89,418
Total	234,423	0	0	234,423	202,736	223,009

The emission factor ($EF_{grid,CM,y}$) is taken as 0.6198 tCO₂eq/MWh for the second crediting period as per the registered PDD.

SDG 7

The baseline value for renewable energy generation is 0. In the absence of the project activity, there wouldn't be renewable energy generation.

SDG 8

The baseline value for number of employment and training is 0. In the absence of the project activity, there wouldn't be the employment of new staff.

The positions at the wind farm require skilled workers, which is achieved by adequate training. The project provides workers with a safe and healthy work environment and is not complicit in exposing workers to unsafe or unhealthy work environments.

E.2. Calculation of project value or estimation of project situation of each SDG Impact

SDG 13

In accordance with the methodology ACM0002 Version 20.0, "Grid-connected electricity generation from renewable sources", no project emissions need to be considered. Project emissions apply only for geothermal power plants, solar thermal power plants and for some hydro power plants. Therefore,

$$PE_y = 0$$

SDG 7

The project value for renewable energy generation is 378,227.25 MWh.

SDG 8

The project value for employment is 17. In total, 17 employees are working for PP at the site.

E.3. Calculation of leakage

In line with the requirements of ACM0002 Version 20.0 "Grid-connected electricity generation from renewable sources", no leakage emissions are considered. The main emissions potentially giving rise to leakage in context of electric sector projects are emissions arising due to activities such as power plant construction and upstream

emissions from fossil fuel use (e.g., extraction, processing and transport). These emission sources are neglected.

LE_y = 0.

E.4. Calculation of net benefits or direct calculation for each SDG Impact

SDG	SDG Impact	Baseline estimate	Project estimate	Net benefit
13	Climate Action	223,009 tCO2	0	223,009 tCO2
7	Affordable and Clean Energy	0	378,227.25MWh	378,227.25MWh
8	Decent Work and Economic Growth (Number of employment)	0	17	17

In accordance with ACM0002, the baseline emissions are calculated as the net electricity generated by the project activity multiplied with the baseline emission factor of the project grid.

$$BE_y = EG_{PJ,grid,y} * EF_{grid,CM,y}$$

where:

- BE_y Baseline emissions in year y (tCO₂)
- EG_{PJ,grid,y} Quantity of net electricity supplied to the grid as a result of the implementation of the CDM project activity in year y (MWh)
- EF_{grid,CM,y} Combined margin CO₂ emission factor for grid connected power generation in year y calculated by using the latest version of the “Tool to calculate the emission factor for an electricity system” (tCO₂/MWh)

$$BE_y = 378,227.25 \text{ MWh} * 0.6198 \text{ tCO}_2/\text{MWh} = 234,423 \text{ tCO}_2$$

However, the emission reductions have been capped to 223,009 tCO₂ as per ASSESSMENT APPROACH FOR REPORTING HIGHER EX-POST EMISSION REDUCTIONS.

E.5. Comparison of actual SDG Impacts with estimates in approved PDD

SDG	Values estimated in ex ante calculation of approved PDD for this monitoring period	Actual values ¹⁰ achieved during this monitoring period
13	202,736 tCO ₂	234,423 tCO ₂
7	327,099.70 MWh	378,227.25MWh
8	14	17

E.5.1. Explanation of calculation of value estimated ex ante calculation of approved PDD for this monitoring period

SDG13

The estimated annual emission reduction in ex ante calculation of registered PDD is 88,834 tCO₂, which corresponds to 202,736 tCO₂ for 833 days. And the actual emission reduction achieved during this monitoring period is 234,423 tCO₂ (for 20/08/2021-30/11/2023, 833 days). However, the emission reductions have been capped to 223,009 tCO₂ as per ASSESSMENT APPROACH FOR REPORTING HIGHER EX-POST EMISSION REDUCTIONS.

SDG 7

Estimated annual electricity generation in ex ante calculation of registered PDD is 143,327 MWh, which corresponds to 327,099.70 MWh for 833 days. And net electricity generation achieved during this monitoring period is 378,227.25 MWh (for 20/08/2021-30/11/2023, 833 days).

SDG8

¹⁰ Whenever emission reductions are capped, both the original and capped values used for calculations must be transparently reported. Use brackets to denote original values.

The baseline value for the number of employments is 17. In the absence of the project activity, there wouldn't be employment of new staff. Estimated (actual value during the registration process) value is 14.

E.6. Remarks on increase in achieved SDG Impacts from estimated value in approved PDD

SDG 7

The achieved electricity generation is 15.6% more than the amount estimated during the monitoring period. This marginal spread from the estimation is due to weather conditions and the most windy period of 2021 is included in MP.

Table 7 - Comparison of electricity generation

Vintage	Period	Total Days	Amount achieved during this monitoring period (MWh)	Amount estimated ex ante (MWh)	Difference (MWh)	Difference (%)
2021	12.08.2021-31.12.2021	134	65,825.35	52,618.68	13,206.67	25.1%
2022	01.01.2022-31.12.2022	365	160,296.78	143,327.00	16,969.78	11.8%
2023	01.01.2023-30.11.2023	334	152,105.12	131,154.02	20,951.10	16.0%
Total		833	378,227.25	327,099.70	51,127.55	15.6%

SDG13

The emission reduction achieved is 15.6% more than the amount estimated ex ante during the monitoring period. This marginal spread from the estimation is due to weather conditions and the windiest period of 2021 is included in MP.

Regarding the difference between the realized and estimated emission reductions during the monitoring period, the emission reductions have been capped to upper bound of expected amount of emission reductions 223,009 tCO2 as per ASSESSMENT APPROACH FOR REPORTING HIGHER EX-POST EMISSION REDUCTIONS. The emission reductions were reduced by 20%. Therefore, emission reductions have been limited to a 10% increase.

Table 8 - Comparison of emission reductions

Vintage	Period	Total Days	Amount achieved during this monitoring period (tCO2e)	Amount estimated ex ante (tCO2e)	Difference (tCO2e)	Difference (%)
2021	20.08.2021-31.12.2021	134	40,798	32,613	8,185	25.1%
2022	01.01.2022-31.12.2022	365	99,351	88,834	10,517	11.8%
2023	01.01.2023-30.11.2023	334	94,274	81,289	12,985	16.0%
Total		833	234,423	202,736	31,687	15.6%

SDG 8

If the project hadn't been realized, there wouldn't be employment opportunities for employees. Therefore, the impact achieved for this SDG is 17.

SECTION F. SAFEGUARDS REPORTING

Data / Parameter	Waste oil disposal
Unit	N/A
Description	The Project Participant shall ensure that the waste oil is transferred and disposed in line with the regulations
Source of data	Through visual inspection or through evidence of disposal
Value(s) applied	Waste oil was transferred in 2021, 2022 and 2023. The records have been provided to the VVB.
Measurement methods and procedures	N/A
Monitoring frequency	Once for each monitoring period
QA/QC procedures	N/A
Purpose of data	To monitor compliance to Safeguarding Principle 4.3.5: Hazardous and Non-hazardous Waste
Additional comment	-

Data / Parameter	Air Quality
------------------	-------------

Unit	tons
Description	Amount of annual net electricity generation, which is calculated by monthly EPIAS records, will be used to calculate estimated CO and NMVOC emission reductions by project activity.
Source of data	Data available from TUIK: http://www.tuik.gov.tr/PreHaberBultenleri.do?id=16174 Since the latest data of CO and NMVOC emissions from the electricity sector are available for the year 2012, the rate between the Net Electricity Generation in 2012 and CO and NMVOC emissions of 2012 have been used to calculate the emission reductions for this monitoring period.
Value(s) applied	CO: 0.160 tons and NMVOC: 0.034 tons per each GWh electricity generated and CO: 60.59 tons and NMVOC: 12.94 tons avoided during the MP.
Measurement methods and procedures	The amount of reduced CO and NMVOC are calculated through the amount of electricity delivered to the grid through EPIAS records
Monitoring frequency	Once for each monitoring period
QA/QC procedures	N/A
Purpose of data	To monitor compliance to Safeguarding Principle 4.3.4 (Release of pollutants)
Additional comment	-

Data / Parameter	Water Quality and Quantity
Unit	m3
Description	Amount of wastewater to be discharged to the environment Wastewater produced by workers during operation is collected in an impermeable septic tank and later they are periodically transferred to wastewater treatment plant.
Source of data	-Data available from TUIK: http://www.tuik.gov.tr/PreHaberBultenleri.do?id=16175 The data for thermal power plants' wastewater indicators which were available during registration (2012 by TUIK), have been used to calculate the avoided wastewater discharge to the environment per year during the monitoring period. -Regarding Total Electricity Generation for 2012, TEIAS official data have been used:

	<p>https://www.teias.gov.tr/tr/turkiye-elektrik-uretim-iletimistatistikleri/2012</p> <p>-Records of transfer of wastewater from power plant by sewage truck, if it was performed, will be used to demonstrate proper wastewater management.</p>
Value(s) applied	<p>-Records of transfer of wastewater from power plant by sewage truck, if it was performed, are used to demonstrate proper wastewater management 26,316 m³ wastewater is assumed to be discharged the environment due to each GWh electricity produced.</p> <p>Avoidance of around 9,953,489m³ wastewater discharge to the environment during this monitoring period. And this corresponds to 4,361,373 per year.</p> <p>Wastewater has been transferred on 27/09/2021, 07/12/2021, 17/03/2022,26/06/2022, 26/08/2022, 27/03/2023, 11/07/2023, 25/09/2023 and 20/10/2023.</p>
Measurement methods and procedures	The amount of avoided wastewater is calculated through the amount of electricity delivered to the grid through EPIAS records.
Monitoring frequency	Once for each monitoring period
QA/QC procedures	N/A
Purpose of data	To monitor compliance to Safeguarding Principle 4.3.4 (Release of pollutants)
Additional comment	-

Data / Parameter	Biodiversity
Unit	N/A
Description	Observation of carcass/nest in the Project area
Source of data	Records by assigned technician by Plant Manager
Value(s) applied	There is no carcass or nest during the MP.
Measurement methods and procedures	Assigned technician by Plant Manager monitors carcass/nest in the Project area and keep records in case of a carcass/nest.
Monitoring frequency	Once for each monitoring period
QA/QC procedures	N/A
Purpose of data	To monitor compliance to Safeguarding Principle 4.3.11: Endangered Species
Additional comment	-

Data / Parameter	Impact on objects or structures of significant cultural heritage
Unit	N/A
Description	The Project Participant shall ensure that there in't any damage or negative impact to the archaeological site.
Source of data	Through visual inspection or interviews with local stakeholders
Value(s) applied	There hasn't been any damage or negative impact to the archeological site.
Measurement methods and procedures	N/A
Monitoring frequency	During 1st verification after CP renewal
QA/QC procedures	N/A
Purpose of data	To monitor compliance with Safeguarding Principle 4.1. Sites of Cultural and Historical Heritage
Additional comment	-

SECTION G. STAKEHOLDER INPUTS AND LEGAL DISPUTES

G.1. List all Inputs and Grievances which have been received via the Continuous Input and Grievance Mechanism together with their respective responses/mitigations.

The Gold Standard Organization requires two round stakeholder process for inclusion of stakeholder in design of the project. One is the Local Stakeholder Consultation meeting which was held on 1st of September 2015 for this project. The report of Local Stakeholder Consultation Meeting of Silivri WPP was submitted to Gold Standard Organization enabling the project to be listed on GS webpage. The second part of the Consultation is Stakeholder Feedback Round which was held between 16th November 2015. During a 2-month period, all project information was published on web sites enabling stakeholders to reach and comment on the documents.

The overall response to the project, from all invited stakeholders, was encouraging and positive. It is evident from the stakeholder consultation process that the project is perceived as a good example for energy generation in Turkey and that it contributes to sustainable development of the country. No major environmental concerns were raised during the entire initial stakeholder consultation process. No adverse reaction, comments or clarifications related to socio-economic aspects have been received during the Initial Stakeholder Consultation process.

The grievance mechanism is in place, and this was confirmed by local villagers and the Fenerköy Village Mukhtar (Village Headman) interviewed during the field visit of the last verification. Since the contact information of the plant manager is available on Mukhtar, any complaint or request can be forwarded to the Project Owner. In addition, the Mukhtar has a Grievance logbook, and the local resident can share their requests or complaints anonymously in any case. No negative input was received during this monitoring period.

G.2. Report on any stakeholder mitigations that were agreed to be monitored.

All requests/complaints received from stakeholders have been resolved. Since there is no request or complaint from the stakeholders, no mitigation is monitored specially.

G.3. Provide details of any legal contest that has arisen with the project during the monitoring period.

No legal contest or dispute has arisen with the project during the monitoring period.

Revision History

Version	Date	Remarks
1.1	14 October 2020	<p>Hyperlinked section summary to enable quick access to key sections</p> <p>Improved clarity on Key Project Information</p> <p>Section for POA monitoring</p> <p>Forward action request section</p> <p>Improved Clarity on SDG contribution/SDG Impact term used throughout</p> <p>Clarity on safeguard reporting</p> <p>Clarity on design changes</p> <p>Leakage section added for VER/CER projects</p> <p>Addition of Comparison of monitored parameters with last monitoring period</p> <p>Provision of an accompanying Guide to help the user understand detailed rules and requirements</p>
1.0	10 July 2017	Initial adoption