



**Verified Carbon
Standard**

URLA WIND POWER PROJECT, TURKEY

Document Prepared by Sekans Danismanlik

Project Title	Urla Wind Power Project, Turkey
Version	4
Report ID	URLA1
Date of Issue	15.11.2021
Project ID	1439
Monitoring Period	27-May-2016 to 28-February-2021
Prepared By	SEKANS DANIŞMANLIK
Contact	Konaklar Mah.34330, Yeni Levent-İstanbul E-mail: sila@sekansdanismanlik.com Phone: +90 532 438 30 29

CONTENTS

1	PROJECT DETAILS.....	3
1.1	Summary Description of the Implementation Status of the Project.....	3
1.2	Sectoral Scope and Project Type.....	5
1.3	Project Proponent	5
1.4	Other Entities Involved in the Project	6
1.5	Project Start Date	6
1.6	Project Crediting Period	6
1.7	Project Location.....	6
1.8	Title and Reference of Methodology	8
1.9	Participation under other GHG Programs	8
1.10	Other Forms of Credit.....	9
1.11	Sustainable Development	9
2	SAFEGUARDS	9
2.3	AFOLU-Specific Safeguards	11
3	IMPLEMENTATION STATUS	11
3.1	Implementation Status of the Project Activity	11
3.2	Deviations	12
3.3	Grouped Projects	12
4	DATA AND PARAMETERS.....	12
4.1	Data and Parameters Available at Validation.....	12
4.2	Data and Parameters Monitored.....	17
4.3	Monitoring Plan.....	19
5	QUANTIFICATION OF GHG EMISSION REDUCTIONS AND REMOVALS	21
5.1	Baseline Emissions	21
5.2	Project Emissions	24
5.3	Leakage.....	24
5.4	Net GHG Emission Reductions and Removals	24

1 PROJECT DETAILS

1.1 Summary Description of the Implementation Status of the Project

The Urla Wind Power Project (hereafter referred to as the “Project” or “Urla WPP”), Turkey, which is developed by Egenda Ege Enerji Üretim A.Ş. (hereafter referred to as the “project owner”) is a wind power plant in İzmir province, Turkey.

The Project has been implemented and operated by Egenda Ege Enerji Üretim A.Ş. The project aims to generate electricity from wind energy and feed it to the national electricity grid.

Total installed power generation capacity of the project is 15 MWm/13MWe¹, consisting of 5 wind turbines, with an estimated power supply to the grid of 45,738 MWh of net electricity generation per annum. Urla WPP is connected to 380 kV Çeşme TM's OG and Çeşme is connected to the 380 kV Çeşme Havza TM.

The estimated amount of GHG emission reduction is 26,680 tonnes CO₂e per year in the registered PDD. During its operation during this monitoring period, the actualized net electricity generation is 210,621.11 MWh. The actual emission reduction has been calculated as 122,851 tonnes CO₂ for this monitoring period.

The project has produced positive environmental benefits as displacing the electricity generated by fossil fuel fired power plants by utilising the renewable resources so as to avoid environmental pollution and GHG emissions.

The project includes 5 units of Enercon E82 E4 type turbines, as four of them have a capacity of 3MWm/3MWe and one of them has a capacity of 3 MWm/1MWe.²

The start date of the project activity is 27/05/2016.

Please see the vintage based comparison of expected and achieved emission reductions for this monitoring period:

¹ Generation license is available to the DOE.

² Ministry Acceptance Protocols are available to the DOE.

Table 1 - Expected vs achieved emission reductions

Vintage	Period	Total Days	Amount achieved during this monitoring period (tCO ₂ e)	Amount estimated ex ante (tCO ₂ e)	Difference (tCO ₂ e)	Difference (%)
2016	27.05.2016-31.12.2016	219	15,805	16,008	-203	-1%
2017	01.01.2017-31.12.2017	365	25,070	26,680	-1,610	-6%
2018	01.01.2018-31.12.2018	365	24,997	26,680	-1,683	-6%
2019	01.01.2019-31.12.2019	365	24,464	26,680	-2,216	-8%
2020	01.01.2020-31.12.2020	366	26,922	26,753	169	1%
2021	01.01.2021-28.02.2021	59	5,593	4,313	1,280	30%
Total		1,739	122,851	127,114	-4,263	-3%

Table 2 - Monitoring timeline of the Project Activity

Date (Period)	Activity
30/03/2009	Issuance of "EIA not Required Certificate"
13/04/2015	Land Permit
27/10/2015	Construction Start Date
27/05/2016	Commissioning of the Project
27/05/2016 – 28/02/2021	1 st Monitoring Report

Table 3 - Key technical specifications of wind turbines

Parameter	Value
Rater Power	3000 kW
Rotor Diameter	82 m
Number of Blades	3
Swept Area	5281 m ²
Hub Height	78/84 m
Rotor Speed	18.0 U/min
Generator	Synchronous, direct-drive ringgenerator
Cut out wind speed	28/34 m/s

1.2 Sectoral Scope and Project Type

According to UNFCCC sectoral scopes definition for CDM projects, the Project Activity is included in the Sectoral Scope 1, category “Energy industries (renewable - / nonrenewable sources)”. The project is a single green field investment and is not part of a project group or bundle.

1.3 Project Proponent

Organization name	Egenda Ege Enerji Üretim A.Ş.
Contact person	Fatih Çandır
Title	Energy Trade and Corporate Relations Department
Address	Şehit Nevres Bulvarı, No: 10, Kat:7 Deren Plaza, Montrö / İzmir
Telephone	+90 232 463 98 11
Email	fatih.candir@endaenerji.com.tr

1.4 Other Entities Involved in the Project

Organization name	Sekans Danışmanlık
Role in the Project	Consultant
Contact person	Sıla Duran
Title	Consultant
Address	Konaklar Mah. 34330,4. Levent - Istanbul
Telephone	-
Email	sila@sekansdanismanlik.com

1.5 Project Start Date

The project start date is 27/05/2016 as the commissioning start date of the project.³

1.6 Project Crediting Period

The Project's crediting period type is renewable crediting. The Project's crediting period is ten years renewable twice: 27/05/2016 – 26/05/2026 (both days are included).

1.7 Project Location

The wind power plant is located in south west of Urla town of İzmir in Turkey.

3.3 km east of the project is Gülbahçe village, 1.5 km west of Barbaros village and 1.1 km south of the Izmir - Çeşme road. The closest settlement to the project site is Barboros Village which is about 1.1 km away of the wind farm.

³ Ministry Acceptance Protocols are available to the VVB.

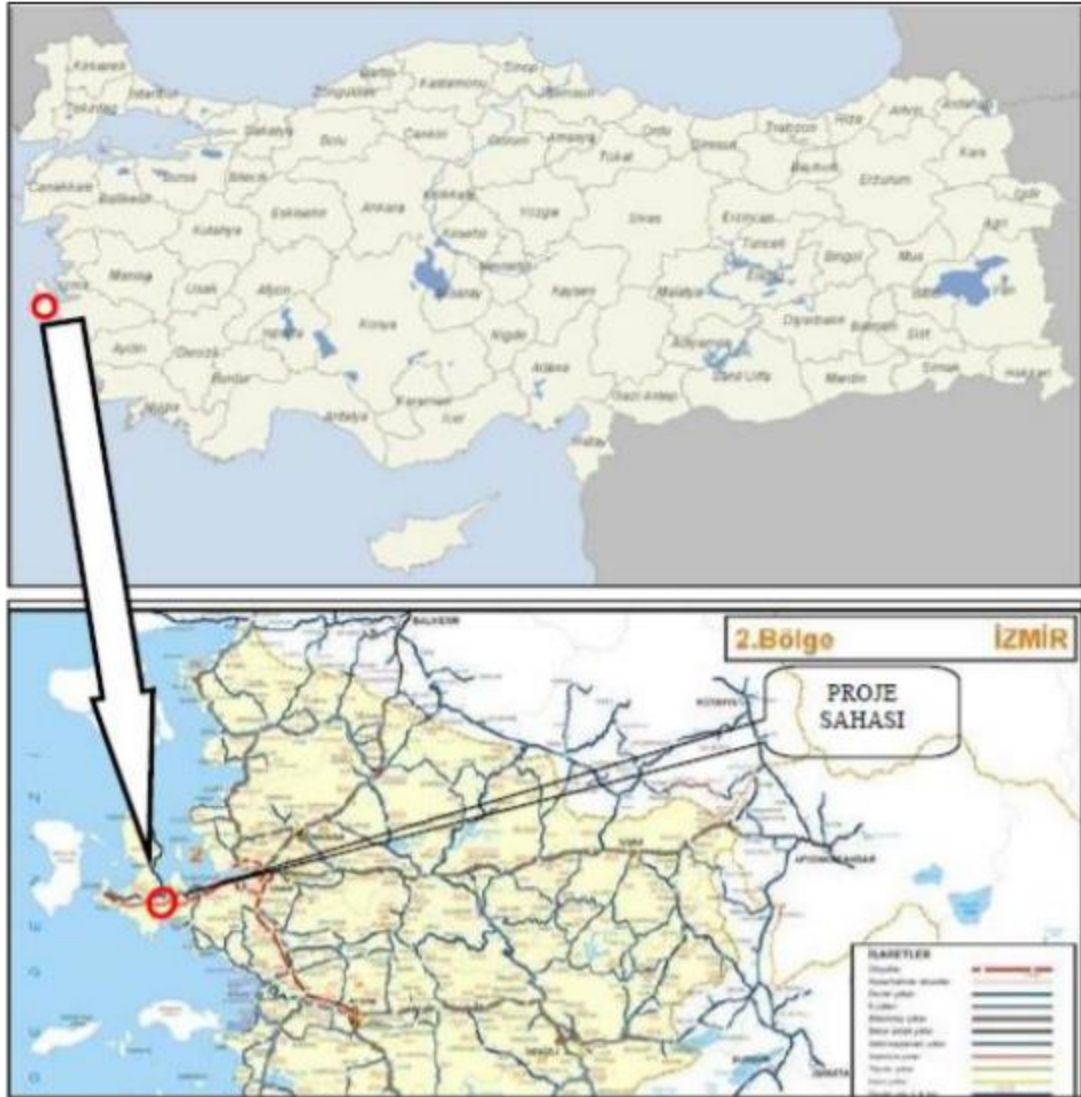


Figure 1. Location of Urla Wind Power Project

Table 4 – Geographical coordinates of the wind turbines of the project activity⁴

Wind Turbine No	Latitude (N)	Longitude (E)
1	465848	4241191
2	465624	4241258

⁴ Generation License is available to the VVB.

3	465393	4241291
4	465163	4241309
5	464935	4241332

1.8 Title and Reference of Methodology

For the determination of the baseline, the official methodology ACM0002 version 16.0.0, “Large scale Consolidated baseline methodology for grid-connected electricity generation from renewable sources”, is applied, using conservative options and data as presented in the following section. This methodology refers to five Tools, which are:

1. Tool to calculate the emission factor for an electricity system (Version 04.0.0)
2. Tool for the demonstration and assessment of additionality (Version 07.0.0)
3. Combined tool to identify the baseline scenario and demonstrate additionality (Version 05.0.0)
4. Tool to calculate project or leakage CO₂ emissions from fossil fuel combustion (Version 02.0.0)
5. Tool to determine the remaining lifetime of the equipment

For baseline calculation the first tool, for additionality assessment the second tool is used. As third tool is the combination of the first and second tool, it is not used. Since no project emission or leakage calculation is required for wind power project fourth tool is not used, and finally to determine the remaining lifetime of the equipment fifth tool is used.

1.9 Participation under other GHG Programs

The project has never been included in an emissions trading program or any other binding limits. It has neither received any kind of environmental credits nor been registered under any other GHG programs.

1.10 Other Forms of Credit

The project has not created another form of credit.

1.11 Sustainable Development

The project produces electricity from renewable energy sources using wind as the power source and to contribute to Turkey's growing electricity demand through a sustainable and low carbon technology. The project displaces the same amount of electricity generated by the grid dominated with fossil fired power plants. The project generates 45,738 MWh annually. The project contributes to the Sustainable Development Goal, Affordable and Clean Energy. During this monitoring period, the project has generated 210,621.11 MWh as contributing to SGD 7 Affordable and Clean Energy.

The annual emission reduction estimated by the project is 26,680 tonnes CO₂, approximately. While this amount of emissions is mitigated, technology transfer is also realized as benefitting from windpower. During this monitoring period, the project has contributed to SDG 13 Climate Action as reducing 122,851 tonnes CO₂.

The project contributes to improve the environmental situation in the region and in the country as avoiding fossil fuel-based electricity enhanced the air quality and help to reduce the negative effects on the climate. Through renewable technologies and wind-based electricity sustainable and climate friendly development is promoted. The project contributes to the Sustainable Development Goal, Climate Action.

During construction and operational period, the project has created employment opportunities for the local community. As contributing to SDG 8 Decent Work and Economic Growth, one Plant Manager and one chief technician are responsible for all five projects of the project owner. Besides this, eight control operators are working in shifts for the Project Activity.

The project contributes the economic development of the region by providing sustainable energy resources. The project provides workers with a safe and healthy work environment and is not complicit in exposing workers to unsafe or unhealthy work environments. Thus, the project contributes to the Sustainable Development Goal, Decent Work and Economic Growth.

2 SAFEGUARDS

2.1 No Net Harm

Within the scope of the project, all precautions have been taken for the environment during the design phase and the project will be implemented in line with the environmental law and related regulations.

The purpose of the project activity is to generate power in an efficient, clean, reliable and sustainable way with maximum respect on social and environmental aspects and to reduce emissions by partially substituting the electricity supply of fossil fuel fired power plants in Turkey. The consequences of the Project Activity with regards to economic, social and environmental impacts have been assessed during EIA process.

There is no agricultural area in the project area and the lands were owned by the state. The land permit was taken from the General Directorate of Forestry on 13/04/2015 and 29/12/2015.

Regarding the wastes, hazardous wastes are handled appropriately in closed containers and transported by licensed transporters to the licensed processing and disposal facilities⁵.

Wastewater is collected through within the septic tank and is transferred through the sewage truck⁶.

The domestic wastes are taken to the containers of the Municipality by the site personnel. The signed declaration of the PP is available to the VVB.

There is not any negative environmental or socio-economic impact.

2.2 Local Stakeholder Consultation

According to the regulation declared by the Ministry of Environment and Forestry and published on the Official Gazete (dated 17th July 2008, numbered 26939), projects which have EIA is not required certificate are not obligated to hold Stakeholder Meetings. Nevertheless, a stakeholder meeting held on 08/11/2012 in Barbaros village coffee house which is the closest settlement area to the project area. Besides project developers, many participants from the villages and representatives of the head of the village were attended. During the meeting, locals of the Barbaros Village expressed their support for renewable energy project of Urla WPP.

Local people were employed during construction and are being employed during operation. This contributes to local economy and leads to improvement in living standards.

⁵ Hazardous waste transfer records are available to the VVB.

⁶ The wastewater transfer receipts are available to te VVB.

The Project has resulted in the creation of new jobs in the project region and improvement in local roads, contributing to living standards in the region. Moreover, the project owner has provided contribution in kind to the local community, although these activities are not required legally. As a result, the community is supporting the project and they believe that it creates a momentum for local sustainable development. Any complaint or need from the local community could directly be received by the project owner and appropriate contributions or improvements are made to the local community. An announcement (dated on 02/03/2021) stating the contact details of the Project relevant staff in case of any complaint by close surroundings has been put up on the Barbaros Mosque of the village to be seen by the villagers. Regarding the monitoring period, no complaint has been received from the villagers.

There was no specific environmental problem that concerned the locals more than others, and environmental issues need to be solved by the government. All people considered clear signs of climate change in the region in recent years.

The contact information of the plant responsible is announced to the local community. Any complaint or need from the local community could directly be received by the project owner and appropriate contributions or improvements are made to the local community.

There is no update on project design.

2.3 AFOLU-Specific Safeguards

N/A

3 IMPLEMENTATION STATUS

3.1 Implementation Status of the Project Activity

The description of the implementation and operational status of the project and the installed technology(ies), technical process and equipment are detailed in Section 1.1.

The Egenda Ege Enerji Üretim A.Ş. is the owner of the Project. Shareholder structure has been changed a few times. The latest structure change was on 20/05/2019 as the main shareholder Enda Enerji Holding A.S.

Other entity involved in the project was Lifeenerji Ltd. Şti. in the project description. However, it's been changed as Sekans Danışmanlık during the first periodic monitoring period.

3.2 Deviations

3.2.1 Methodology Deviations

There are no methodology deviations applied during this monitoring period.

3.2.2 Project Description Deviations

The first 10-year crediting period was from 1st of June 2016 to 30st of May 2025 after the completion of commissioning. The project started its operation in 27/05/2016. Thus, the project start date is 27/05/2016. And the Project's crediting period is: 27/05/2016 – 26/05/2026.

The Egenda Ege Enerji Üretim A.Ş. is the owner of the Project. Shareholder structure has been changed a few times. The latest structure change was on 20/05/2019 as the main shareholder Enda Enerji Holding A.S.

Other entity involved in the project was Lifeenerji Ltd. Şti. in the project description. However, it's been changed as Sekans Danışmanlık during the first periodic monitoring period.

3.3 Grouped Projects

This is not a grouped project.

4 DATA AND PARAMETERS

4.1 Data and Parameters Available at Validation

Data / Parameter	Gross electricity generation
Data unit	MWh
Description	Gross Electricity supplied to the grid by relevant sources (2009-2011)
Source of data	Turkish Electricity Transmission Company (TEİAŞ), Annual Development of Turkey's Gross Electricity Generation of Primary Energy Resources (1975-2011) TEİAŞ https://www.teias.gov.tr/tr-TR/turkiye-elektrik-uretim-iletimistatistikleri
Value applied	Please refer to Table 13 in the PDD

Justification of choice of data or description of measurement methods and procedures applied	TEIAS annually publishes official data regarding electricity generation. Average share of each source in the overall generation has been calculated.
Purpose of Data	Data used for emission reduction calculation
Comments	-

Data / Parameter	EF_{grid, CM, y}
Data unit	tCO ₂ /MWh
Description	Combined margin CO ₂ emission factor for the project electricity system in year 2011
Source of data	As per “Tool to calculate the emission factor for an electricity system”
Value applied	0.5833 tCO ₂ /MWh
Justification of choice of data or description of measurement methods and procedures applied	As per “Tool to calculate the emission factor for an electricity system” Calculated from data provided by the TEIAS for Turkish Power Sector; Operating Margin = 0.6542 KgCO ₂ e/kWh Build Margin = 0.3707 KgCO ₂ e/kWh Combined Margin = 0.5833 KgCO ₂ /kWh
Purpose of Data	Used for baseline emissions
Comments	-

Data / Parameter	Eg_y
Data unit	MWh
Description	Net electricity generated by project electricity system in year 2009, 2010 and 2011
Source of data	Turkish Electricity Transmission Company (TEIAS), Annual Development of Electricity Generation- Consumption and Losses in Turkey (1984-2011) TEIAS https://www.teias.gov.tr/tr-TR/turkiye-elektrik-uretim-iletimistatistikleri
Value applied	Please refer to Table 14 and Table 15 in the PDD

Justification of choice of data or description of measurement methods and procedures applied	TEIAS annually publishes official data regarding total net electricity generation, but its breakdown by fuel type is unavailable.
Purpose of Data	Data used for emission reduction calculation
Comments	-

Data / Parameter	EF_{CO2,i,y}
Data unit	tCO ₂ /GJ
Description	CO ₂ emission factor of fuel type i used in power unit m in year 2011
Source of data	PCC default values at the lower limit of the uncertainty at a 95% confidence interval as provided in table 1.4 of Chapter1 of Vol. 2 (Energy) of the IPCC Guidelines on National GHG Inventories. http://www.ipccnggip.iges.or.jp/public/2006gl/pdf/2_Volume2/V2_1_Ch1_Introduction.pdf
Value applied	Please refer to Table 18 and Table 21 in the PDD
Justification of choice of data or description of measurement methods and procedures applied	No plant specific and national emission factor data is available in Turkey. So, IPCC default data is used. For Fuel Oil Power Plants: 'Gas/Diesel Oil' data is used for conservativeness. For Coal Power Plants: In the 205 th page of official document given in the link below, it is stated that Çolakoğlu and İçdaş utilizes 'Taşkömürü' (Hardcoal). And at the Table-2 in page 157 of the same document, Taşkömürü is divided in two groups: Bituminous and Anthracite. Since Sub-Bituminous Coal is under Brown Coal in the same table and since Other Bituminous Coal has lower EF than Anthracite in 1.4 of IPCC Guidelines, EF for 'Other Bituminous Coal' is used. See: http://www.dpt.gov.tr/DocObjects/Icerik/4225/Enerji_Hammadeleri_(Linyit_Taşkömuru-Jeotermal)
Purpose of Data	Data used for emission reduction calculation
Comments	-

Data / Parameter	Sample Group for BM emission factor
Data unit	Name of the plants, MW capacities, fuel types, annual electricity generations and dates of commissioning.

Description	Most recent power plants which compromise 20% of total generation
Source of data	Annual Development Of Fuels Consumed In Thermal Power Plants In Turkey By The Electric Utilities, TEIAS: http://www.epdk.org.tr/yayin_rapor/elektrik/yayin/uretimKapasiteProjeksiyonunu.pdf http://www.epdk.org.tr/yayin_rapor/elektrik/yayin/uretimKapasiteProjeksiyonu2008_2017.pdf http://www.teias.gov.tr/projeksiyon/KAPASITEPROJEKSIYONU2009.pdf http://www.teias.gov.tr/projeksiyon/KAPASITE%20PROJEKSIYONU%202010.pdf http://www.epdk.org.tr/documents/10157/8edb1470-7667-4ce1-8ce5-21d1ce4e4761 http://www.teias.gov.tr/KAPASITEPROJEKSIYONU2012.pdf
Value applied	Please refer to table 23 in the PDD
Justification of choice of data or description of measurement methods and procedures applied	The Turkish Electricity Distribution Company. TEIAS is the national electricity transmission company, which makes available the official data of all power plants in Turkey. The latest data available during PDD preparation was for 2011.
Purpose of Data	Data used for emission reduction calculation
Comments	-

Data / Parameter	$\eta_{i,y}$
Data unit	-
Description	Average energy conversion efficiency of power unit m in year y
Source of data	Annex I the "Tool to calculate the emission factor for an electricity system"
Value applied	Please refer to table 18 in the PDD
Justification of choice of data or description of measurement methods and procedures applied	For efficiency rates of Coal and Lignite Power Plants See Annex-1 of the Tool (highest rate is applied to be conservative) For Natural Gas and Oil plants efficiencies, default value given in the tool is applied: http://cdm.unfccc.int/methodologies/PAMethodologies/tools/am-tool-07-v2.pdf
Purpose of Data	Data used for emission reduction calculation

Comments	-
-----------------	---

Data / Parameter	HV_{i,y}
Data unit	Mass or volume unit
Description	Heating Values of fuels consumed for electricity generation in the years of 2009, 2010 and 2011
Source of data	TEİAŞ (Turkish Electricity Transmission Company) http://www.teias.gov.tr/istatistikler.aspx
Value applied	Please refer to Table 19 in the PDD
Justification of choice of data or description of measurement methods and procedures applied	TEİAŞ is the national electricity transmission company, which makes available the official data of all power plants in Turkey. There is no national NVC data in Turkey. However, TEİAŞ announces Heating values of fuels. This data is used to calculate annual NCVs for each fuel type.
Purpose of Data	Data used for emission reduction calculation
Comments	-

Data / Parameter	FC_{i,y}
Data unit	Mass or volume unit
Description	Amount of fuel type i consumed by relevant power plants in Turkey in the years of 2009, 2010 and 2011
Source of data	TEİAŞ (Turkish Electricity Transmission Company) http://www.teias.gov.tr/istatistikler.aspx
Value applied	Please refer to Table 20 in the PDD
Justification of choice of data or description of measurement methods and procedures applied	TEİAŞ is the national electricity transmission company, which makes available the official data of all power plants in Turkey.
Purpose of Data	Data used for emission reduction calculation
Comments	-

Data / Parameter	NCV_{i,y}
Data unit	TJ/kton, TJ/million m ³
Description	Net calorific value (energy content) of fuel type i in years of 2009, 2010 and 2011

Source of data	Calculated by using HVi,y to FCi,y as Net Calorific Values of fuel types are not directly available in Turkey.
Value applied	Please refer to section Table 21 in the PDD
Justification of choice of data or description of measurement methods and procedures applied	According to “Turkish Statistics Law and Official Statistics Program” TEIAS, the Turkish Electricity Transmission Company is the official source for the related data, hence providing the most up-to-date and accurate information available. Calculation of NCVs from national HVi,y and FCi,y data is preferred to default IPCC data as these are more reliable.
Purpose of Data	Used to calculate the combined margin emission factor
Comments	-

4.2 Data and Parameters Monitored

Data / Parameter	$EG_{facility,y}$
Data unit	MWh/yr
Description	Quantity of net electricity generation supplied to the grid in year y
Source of data	The data from the Electricity Meters are the basis for the settlement notification of EPIAS ⁷ . Data are gathered electronically from the meters by TEIAS and stored in secured website of EPIAS, which is accessible to project developer with a private password. For monitoring, the monthly settlement notification of EPIAS shall be used as source of data.
Description of measurement methods and procedures to be applied	Urla Wind Power Project is connected to 380 kV Çeşme TM's OG and then Çeşme is connected to the 380 kV Çeşme Havza TM. There are two metering instruments (power meters). These devices measure the net electricity supply to the national grid by the Project Activity, all losses before this point are on account of the project participant. Both metering instruments, which continuously monitor and measure the net electricity delivered by the Project Activity, are sealed and only accessible by TEIAS personnel. Official TEIAS data from the EPIAS web site was used for calculating EG_y .

⁷ PMUM has been replaced by EPIAS as of 01/09/2015 in Turkey. Retrospective data is accessible via EPIAS

Frequency of monitoring/recording	Monthly readings																		
Value monitored	27,096.90 MWh for 2016 42,981.23 MWh for 2017 42,856.01 MWh for 2018 41,942.18 MWh for 2019 46,154.75 MWh for 2020 9,590.06 MWh for 2021																		
Monitoring equipment	<p>Both exported and imported electricity are measured continuously by a power meter at the grid interface and recorded monthly.</p> <p>Power meters:</p> <table border="1" data-bbox="634 762 1419 1104"> <thead> <tr> <th></th> <th>Main Meter</th> <th>Spare Meter</th> </tr> </thead> <tbody> <tr> <td>Name</td> <td>Ana Sayaç</td> <td>Yedek Sayaç</td> </tr> <tr> <td>Brand</td> <td>EMH (LZQJ-XC)</td> <td>EMH (LZQJ(XC))</td> </tr> <tr> <td>Serial Number</td> <td>3936679</td> <td>3936680</td> </tr> <tr> <td>Latest Test Date of the Meters</td> <td>19/09/2020</td> <td>19/09/2020</td> </tr> <tr> <td>Accuracy Class</td> <td>0.2S class</td> <td>0.2S class</td> </tr> </tbody> </table> <p>The initial meter test date is 03.05.2016.</p> <p>The dates of meter tests are 08.12.207, 13.08.2018 and 19.09.2020.</p>		Main Meter	Spare Meter	Name	Ana Sayaç	Yedek Sayaç	Brand	EMH (LZQJ-XC)	EMH (LZQJ(XC))	Serial Number	3936679	3936680	Latest Test Date of the Meters	19/09/2020	19/09/2020	Accuracy Class	0.2S class	0.2S class
	Main Meter	Spare Meter																	
Name	Ana Sayaç	Yedek Sayaç																	
Brand	EMH (LZQJ-XC)	EMH (LZQJ(XC))																	
Serial Number	3936679	3936680																	
Latest Test Date of the Meters	19/09/2020	19/09/2020																	
Accuracy Class	0.2S class	0.2S class																	
QA/QC procedures to be applied	<ul style="list-style-type: none"> • A spare meter is used for crosschecking the accuracy and both meters are calibrated if required. • EPIAS records are considered as the main source for the net electricity and the values are crosschecked with the Meter Reading Forms • TEIAS is responsible for calibration and maintenance of the devices. The periodic calibration or maintenance is under the responsibility of TEIAS and has been fixed as once in 10 years⁸. Since TEİAŞ meters are sealed by TEİAŞ, the project proponent cannot intervene with 																		

⁸ 4 <http://www.mevzuat.gov.tr/Metin.Aspx?MevzuatKod=7.5.6381&MevzuatIliski=0&sourceXmlSearch>

	the devices. The periodic tests are executed on annual basis.
Purpose of the data	Calculation of net electricity supplied to the grid and thus baseline emissions
Calculation method	Direct continuous measurement
Comments	-

4.3 Monitoring Plan

The objective of the monitoring plan is to ensure the complete, consistent, clear, and accurate monitoring and calculation of the emission reductions during the whole crediting period. The Project proponent is responsible for the implementation of the monitoring plan.

The Project Proponent is responsible for the overall management of the monitoring procedures including recording, data collection, calculating emission reductions and project emissions.

Please see below the management structure for the plant operation:

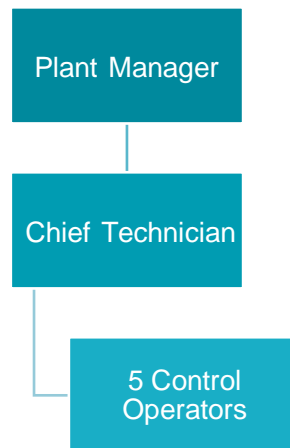


Figure 2. The management structure for the plant operation

including day, peak and night hour electricity generation by the project owner and approved by governmental officers at the end of each month.

The primary source is the EPIAS records. Net electricity exported is crosschecked with Meter Reading Forms. EPIAS is the financial settlement center of TEIAS⁹. The Meter Reading Forms are filled by the project owner and approved by the governmental officers. Additionally, the remote reading by the governmental body is also available. The website of EPIAS is accessible to Project Proponent with their unique user ID and password. Once accessed, the Project Proponent is able to call electricity generation and consumption reports of their own projects. The same reports are used by the Project Proponent for invoicing TEIAS. The electricity generation data is reported monthly basis.

5 QUANTIFICATION OF GHG EMISSION REDUCTIONS AND REMOVALS

5.1 Baseline Emissions

The baseline emission BE_y (tCO₂e) during the monitoring period results from:

$$BE_y = EG_{PJ, y} * EF_{grid, CM, y}$$

Where:

BE _y	Baseline emissions in year y (tCO ₂ e/y)
EG _{PJ,y}	Quantity of net electricity supplied to the grid as a result of the implementation of the CDM project activity in year y (MWh)
EF _{grid,CM,y}	Combined margin CO ₂ emission factor for grid connected power generation in year y calculated by using the latest version of the “Tool to calculate the emission factor for an electricity system” (tCO ₂ /MWh)

⁹ PMUM has been replaced by EPIAS as of 01/09/2015 in Turkey during the verification period. Retrospective data is accessible via EPIAS.

Table 5 - Baseline emissions

Month	(A) Electricity supplied to the grid [MWh]	(B) Electricity consumption from the grid [MWh]	(C) = (A) - (B) EG (ID 8) Net electricity supplied to the grid [MWh]	EF [tCO ₂ /MWh]	Baseline emission: ER = EG * EF [t CO ₂ -eq]
May-16	42.43	3.14	39.29	0.5833	23
Jun-16	2,709.84	1.23	2,708.62	0.5833	1,580
Jul-16	5,366.31	0.04	5,366.27	0.5833	3,130
Aug-16	4,148.33	0.20	4,148.13	0.5833	2,420
Sep-16	3,582.67	0.70	3,581.97	0.5833	2,089
Oct-16	3,307.04	1.31	3,305.73	0.5833	1,928
Nov-16	3,083.52	1.57	3,081.95	0.5833	1,798
Dec-16	4,865.86	0.91	4,864.94	0.5833	2,838
Jan-17	4,169.74	0.60	4,169.15	0.5833	2,432
Feb-17	4,369.19	0.66	4,368.53	0.5833	2,548
Mar-17	2,781.18	0.96	2,780.21	0.5833	1,622
Apr-17	2,202.28	1.83	2,200.45	0.5833	1,284
May-17	2,783.23	1.83	2,781.41	0.5833	1,622
Jun-17	1,899.25	1.59	1,897.66	0.5833	1,107
Jul-17	4,979.05	0.29	4,978.76	0.5833	2,904
Aug-17	5,962.80	0.09	5,962.71	0.5833	3,478
Sep-17	2,230.87	1.42	2,229.45	0.5833	1,300
Oct-17	4,191.06	1.78	4,189.28	0.5833	2,444
Nov-17	2,190.31	2.51	2,187.80	0.5833	1,276
Dec-17	5,236.23	0.40	5,235.83	0.5833	3,054
Jan-18	4,321.87	1.92	4,319.96	0.5833	2,520
Feb-18	3,718.21	0.74	3,717.47	0.5833	2,168
Mar-18	4,886.92	0.46	4,886.45	0.5833	2,850
Apr-18	2,255.12	2.14	2,252.98	0.5833	1,314
May-18	2,613.79	1.94	2,611.85	0.5833	1,523
Jun-18	2,181.10	1.07	2,180.03	0.5833	1,272
Jul-18	3,094.36	1.02	3,093.35	0.5833	1,804
Aug-18	4,198.48	0.67	4,197.81	0.5833	2,449
Sep-18	3,842.91	0.29	3,842.62	0.5833	2,241
Oct-18	2,985.24	0.77	2,984.47	0.5833	1,741
Nov-18	4,888.04	0.27	4,887.77	0.5833	2,851
Dec-18	3,882.61	1.35	3,881.26	0.5833	2,264
Jan-19	3,734.89	0.77	3,734.12	0.5833	2,178

Feb-19	3,562.49	1.26	3,561.24	0.5833	2,077
Mar-19	3,811.86	0.47	3,811.40	0.5833	2,223
Apr-19	2,868.08	0.99	2,867.08	0.5833	1,672
May-19	1,913.58	1.03	1,912.54	0.5833	1,116
Jun-19	4,008.93	0.78	4,008.16	0.5833	2,338
Jul-19	4,104.90	0.54	4,104.37	0.5833	2,394
Aug-19	5,371.86	0.48	5,371.38	0.5833	3,133
Sep-19	3,780.30	1.29	3,779.01	0.5833	2,204
Oct-19	2,658.85	3.22	2,655.63	0.5833	1,549
Nov-19	2,536.31	1.26	2,535.05	0.5833	1,479
Dec-19	3,604.47	2.27	3,602.20	0.5833	2,101
Jan-20	5,255.53	1.04	5,254.49	0.5833	3,065
Feb-20	4,319.01	1.23	4,317.78	0.5833	2,519
Mar-20	4,185.46	1.06	4,184.40	0.5833	2,441
Apr-20	3,955.99	1.24	3,954.75	0.5833	2,307
May-20	2,351.84	2.60	2,349.25	0.5833	1,370
Jun-20	2,018.18	1.70	2,016.48	0.5833	1,176
Jul-20	4,773.92	0.02	4,773.90	0.5833	2,785
Aug-20	4,612.76	0.24	4,612.52	0.5833	2,690
Sep-20	3,469.40	0.98	3,468.43	0.5833	2,023
Oct-20	1,782.99	1.56	1,781.43	0.5833	1,039
Nov-20	4,830.70	0.42	4,830.28	0.5833	2,818
Dec-20	4,612.18	1.14	4,611.05	0.5833	2,690
Jan-21	5,085.97	0.40	5,085.57	0.5833	2,966
Feb-21	4,505.24	0.75	4,504.49	0.5833	2,627
2016 Vintage (27.05.2016- 31.12.2016)	27,105.99	9.10	27,096.90	0.5833	15,805
2017 Vintage (01.01.2017- 31.12.2017)	42,995.19	13.96	42,981.23	0.5833	25,070
2018 Vintage (01.01.2018- 31.12.2018)	42,868.64	12.64	42,856.01	0.5833	24,997
2019 Vintage (01.01.2019- 31.12.2019)	41,956.51	14.33	41,942.18	0.5833	24,464
2020 Vintage (01.01.2020- 31.12.2020)	46,167.98	13.23	46,154.75	0.5833	26,922

2021 Vintage (01.01.2021- 28.02.2021)	9,591.21	1.15	9,590.06	0.5833	5,593
Total	210,685.52	64.40	210,621.11	0.5833	122,851

5.2 Project Emissions

In accordance with the methodology, no project emissions need to be considered. Project emissions apply only for geothermal power plants, solar thermal power plants and for some hydro power plants.

Therefore, $PE_y = 0$.

5.3 Leakage

No leakage is to be accounted by the Project Activity. This is in line with the registered PD and applicable methodology ACM0002 version 16.0.0. Therefore, the leakage from the Project Activity is zero.

5.4 Net GHG Emission Reductions and Removals

Emission reductions are calculated as follows:

$$ER_y = BE_y - PE_y$$

Where:

ER_y Emission reductions in year y (t CO₂e/yr)

BE_y Baseline emissions in year y (tCO₂e/y)

PE_y Project emissions in year y (t CO₂e/yr)

The baseline emission BE_y (tCO₂e) during the monitoring period results from:

$$BE_y = EG_{PJ,y} * EF_{grid, CM, y}^{10}$$

Where:

BE _y	Baseline emissions in year y (tCO ₂ e/y)
EG _{PJ,y}	Quantity of net electricity supplied to the grid as a result of the implementation of the CDM project activity in year y (MWh)
EF _{grid,CM,y}	Combined margin CO ₂ emission factor for grid connected power generation in year y calculated by using the latest version of the “Tool to calculate the emission factor for an electricity system” (tCO ₂ /MWh)

Year	Baseline emissions or removals (tCO ₂ e)	Project emissions or removals (tCO ₂ e)	Leakage emissions (tCO ₂ e)	Net GHG emission reductions or removals (tCO ₂ e)
2016	15,805	0	0	15,805
2017	25,070	0	0	25,070
2018	24,997	0	0	24,997
2019	24,464	0	0	24,464
2020	26,922	0	0	26,922
2021	5,593	0	0	5,593

¹⁰ Please see ER calculations_Germiyan_WPP_v4_06.10.2021 for the detailed calculation.

Total	122,851	0	0	122,851
--------------	---------	----------	----------	---------

Project emissions apply only for geothermal power plants, solar thermal power plants and for some hydro power plants.

Therefore, $PE_y = 0$

In total, for this monitoring period:

$$ER_y = BE_y - PE_y$$

$$= 122,851 - 0$$

$$= 122,851$$