



Gold Standard[®]
for the Global Goals

TEMPLATE

KEY PROJECT INFORMATION & PROJECT DESIGN DOCUMENT (PDD)

PUBLICATION DATE **29.06.2023**

VERSION **v.1.5**

RELATED SUPPORT

[- TEMPLATE GUIDE Key Project Information & Project Design Document](#)

This document contains the following sections

SECTION A. DESCRIPTION OF PROJECT

SECTION B. APPLICATION OF APPROVED GOLD STANDARD METHODOLOGY (IES)
AND/OR DEMONSTRATION OF SDG CONTRIBUTIONS

SECTION C. DURATION AND CREDITING PERIOD

SECTION D. SUMMARY OF SAFEGUARDING PRINCIPLES AND GENDER SENSITIVE
ASSESSMENT

SECTION E. SUMMARY OF LOCAL STAKEHOLDER CONSULTATION

Appendix 1 - Safeguarding Principles Assessment (mandatory)

Appendix 2 - Contact information of project developer(s) (mandatory)

Appendix 3 - LUF Additional Information (project specific)

Appendix 4 - Design Changes

KEY PROJECT INFORMATION

GS ID of Project	4221
Title of Project	Vichada Climate Reforestation Project (PAZ)
Time of First Submission Date	16/06/2015
Date of Design Certification	29/08/2016
Version number of the PDD	6
Completion date of version	28/06/2025
Project Developer	FORLIANCE GmbH
Project Representative	Julian Ekelhof German Rodriguez
Project Participants and any communities involved	Inverbosques S.A. Aldea Forestal S.A.
Host Country (ies)	Colombia
Activity Requirements applied	<input checked="" type="checkbox"/> Land-Use and Forests Activity Requirements /Risks & Capacities
Scale of the project activity	<input checked="" type="checkbox"/> Large Scale
Other Requirements applied	
Methodology (ies) applied and version number	Methodology for Afforestation/Reforestation (A/R) GHG emission reduction & sequestration V 2.0
Product Requirements applied	<input checked="" type="checkbox"/> GHG Emissions Reduction & Sequestration
Project Cycle:	<input checked="" type="checkbox"/> Retroactive

Land-use & Forest Key Project Information¹

(delete below table if N/A)

Scope:	<input checked="" type="checkbox"/> Forestry
Silvicultural system:	<input checked="" type="checkbox"/> Conservation (no use of timber)
Project Area (ha):	106,522.07 ha
Eligible Area (ha):	21,413.99 ha
10% Set Aside Conservation area (ha):	11,994.17 ha
Evidence that Project Area Boundary is clearly distinguishable in the field:	Support_Info>GIS_Info
Planting Area	21,413.99 ha
How many Modelling Units (MUs) are included in the eligible area:	23 MU – 56 sub MU
Summary of New Areas added (copy and insert as needed):	
Size (ha):	2,892.12 ha
Date Added	2024

¹ Please refer to Appendix 3 for detailed information on LUF projects

Table 1 – Estimated Sustainable Development Contributions

SUSTAINABLE DEVELOPMENT GOALS TARGETED	SDG IMPACT (DEFINED IN B.6)	ESTIMATED ANNUAL AVERAGE	UNITS OR PRODUCTS
13 Climate Action (mandatory)	N/A	195,986 tCO ₂	Emission Reductions
8 Decent Work and Economic Growth	Increased employment opportunities	127	Jobs
8 Decent Work and Economic Growth	Enhanced opportunities for income generation	127	Employees earning above local minimum wage
15 Life on Land	Increased area under tree canopy cover	1,000	Ha of trees planted
15 Life on Land	Enhanced biodiversity	56	% Change in number of protected threatened species in the project area & conservation status of species
15 Life on Land	Enhanced biodiversity	100	Ha of protected land area

SECTION A. DESCRIPTION OF PROJECT

A.1 Purpose and general description of project

The Vichada Climate Reforestation Project stands as a transformative initiative aimed at restoring degraded grasslands, enhancing biodiversity, and supporting local communities through sustainable afforestation efforts. Led by Inverbosques and Aldea Forestal, the project's environmental and social initiatives not only contribute to carbon sequestration but also enrich the lives of residents through job creation, community support, and sustainable practices.

The forestry project is implemented in the Eastern Colombian Department of Vichada, within and around the Bitá River Basin. The applied measure to remove GHG from the atmosphere is the afforestation of degraded grasslands (baseline) with three main tree species: *Acacia* sp, *Pinus* sp. and *Eucalyptus* sp. Currently, the project participants are also investigating the seedling, development, and planting of native species in the region to support the transition from degraded areas into a forested area. By using the above three species as a first step it supports helping to provide soil stability, structure, and microclimate improvements that enable native species to establish more effectively, especially on highly degraded lands.

The project boundary is defined as follows: the project region where all project areas are located and where future new areas may be added are the municipalities of Puerto Carreño, La Primavera, and Cumaribo (grouped project). For the fourth performance review event (2024), the project planted area is 21,413.99 ha (Aldea Forestal: 3,282.26; Inverbosques: 18,131.73 ha), whereas the project area is 106,522.07 ha.

Independently former managed by three project participants, Reforestadora La Paz, Aldea Forestal and Inverbosques, the project has continued with the last two participants only, implementing and continues to establishing forest plantations of *Eucalyptus urophylla*, *Eucalyptus tereticornis*, *Eucalyptus pellita*, *Acacia mangium*, and *Pinus caribaea*. In addition to the introduction of native species in areas with established forest supporting the transition to a natural forest.

The project was validated and verified for the first time in 2016 under Gold Standard Version 0.9 requirements. Three years later in 2019, it was verified for the second time and transitioned to the GS4GG version. In 2023, the project was successfully revalidated and underwent a Design Change; followed by its third monitoring event following under Gold Standard. In 2024, the project is in its 4th monitoring period (2022-2024).

A.1.1. Eligibility of the project under Gold Standard

I. Being a conservation project, the project type is pre-identified as eligible by the GS4GG Land Use and Forestry Activity requirements (Version 1.2.1.):

2.1.2 A/R projects:

(a) Can include planting trees

(b) Can include single-species plantations

(c) Can apply to all silvicultural systems. For example:

Conservation forests (no use of timber)

Forests with selective harvesting

Rotation forestry

II. The project meets the General Eligibility Criteria of the GS4GG Land Use and Forestry Activity requirements – Section 2 (Version 1.2.1.) as follows:

(a) The project belongs to the eligible project type category of Afforestation & Reforestation Projects (A/R).

(b) No Deforestation: All the eligible areas at the beginning of the project were classified as non-forest areas and have therefore not been a forest before the project start date and at the project start date. Landsat images were used from 1996 to 2006 to demonstrate the vegetation existing before planting in comparison with ten years before the date. Supporting documentation is available to the auditor from the validation and subsequent performance review events.

(c) Not applicable since no eligible and non-eligible area have been deforested.

(d) The project is implemented in Colombia. The country has submitted an NDC under the Paris Agreement and is implementing measures to achieve its emission targets related to deforestation and forest degradation. More specifically, the mitigation strategy includes reforestation of areas for commercial purposes i.e., in Vichada³. The present project would not be accounted for under these efforts due to the project operating as a conservation system.

In 2018, through Resolution No. 14474, the Colombian government introduced the National Emission Reduction Registry (RENARE by its acronym in Spanish). RENARE controls and monitors activities contributing to the country's emission reduction goal via a national carbon market. Currently, sectors under the country's carbon tax scheme can offset parts of their emissions using carbon credits from the registry to avoid the tax. The country is also planning to introduce a national ETS for compliance sectors, excluding the LULUCF sector but allowing internal compensation with projects registered in RENARE. The so-called "RE System" will enter a pilot phase in 2024 before entering full operation in 2025. The project participants and project developer are working with the RENARE to register the Vichada Reforestation Climate Project in the National registry.

III. The project is not registered with any other voluntary or compliance scheme.

IV. The compliance with Colombia's legal, environmental, ecological and social regulations is demonstrated.

A.1.2. Legal ownership of products generated by the project and legal rights to alter use of resources required to service the project

In Colombia, land is regulated by Law No. 160 of 1994 and managed by the National Cadaster System (SNIC) and the Superintendence of Notaries and Registry. The former oversees spatial boundaries and property appraisals, and the latter is responsible for keeping updated properties characteristics and legal status on a national registry. According to the regulatory framework, project proponents have legal ownership of the forest plantations overall and where CO₂e is sequestered.

A.2 Location of project

The project is in Vichada department, southeastern Colombia. It borders with Venezuela by the east, Meta department by the west, Casanare and Arauca departments by the north, and Guainía department by the south. The project region where all project areas are located and where future new areas may be added are the municipalities of Puerto Carreño, La Primavera, and Cumaribo (Figure 1).

The whole project area spreads from:

-70.0892904239815948° East, 4.6388864859050800° North to -67.7133614723530854° East, 6.1806146130301522° North (EPSG:4326).

The project area is spread over 89 properties located in the project region (Figure 2). Out of them, Inverbosques is responsible for managing 83 properties in Puerto Carreño, La Primavera and Cumaribo, while Aldea Forestal manages 6 properties in La Primavera and Cumaribo.

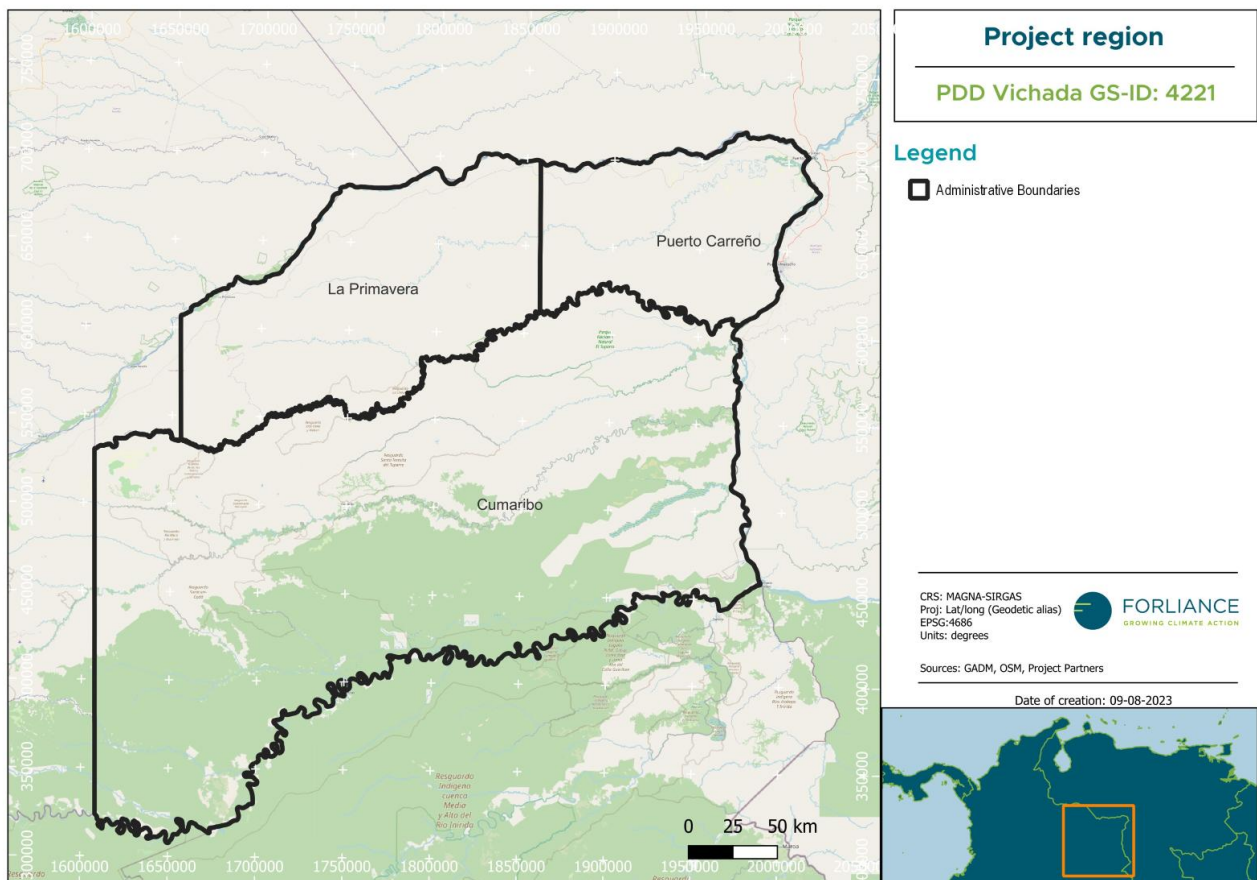
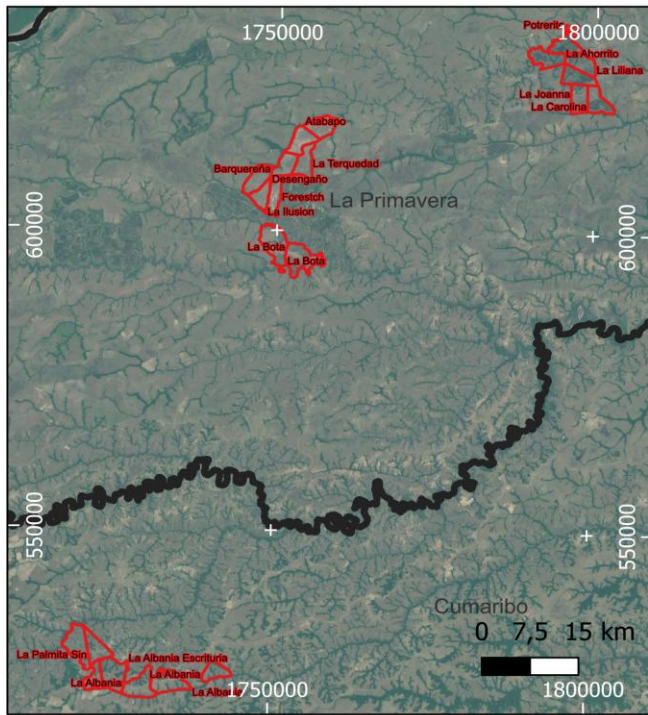
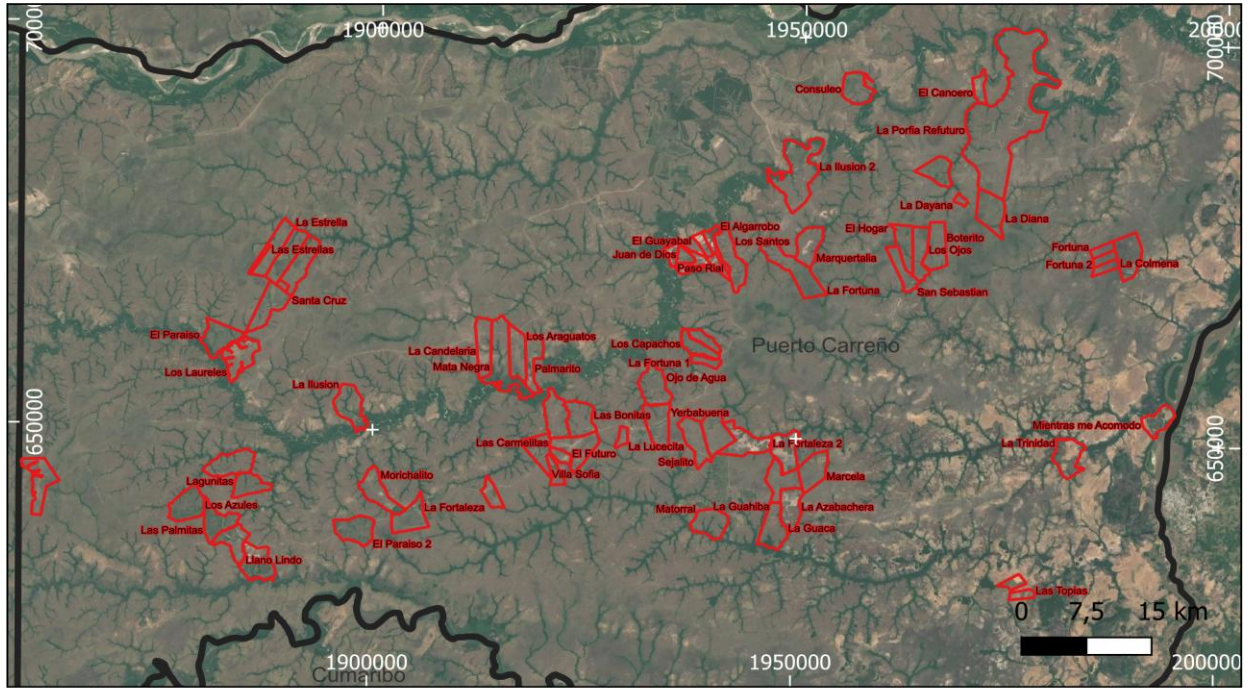


Figure 1. Project region



Project area

PR 2024 Vichada GS-ID: 4221

Legend

- Project Properties
- Administrative Boundaries

Company	Property area (ha)
Inverbosques	99,150.81
Aldea Forestal	7,371.26
Total	106,522.07

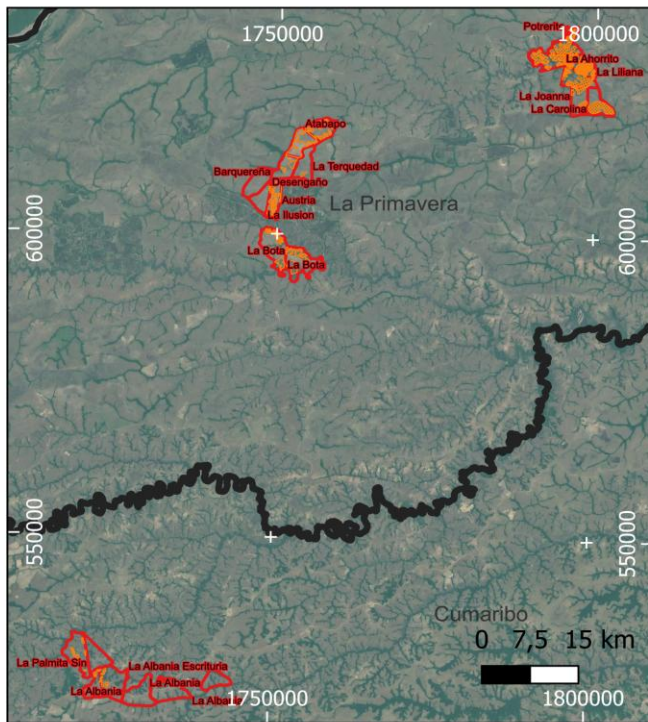
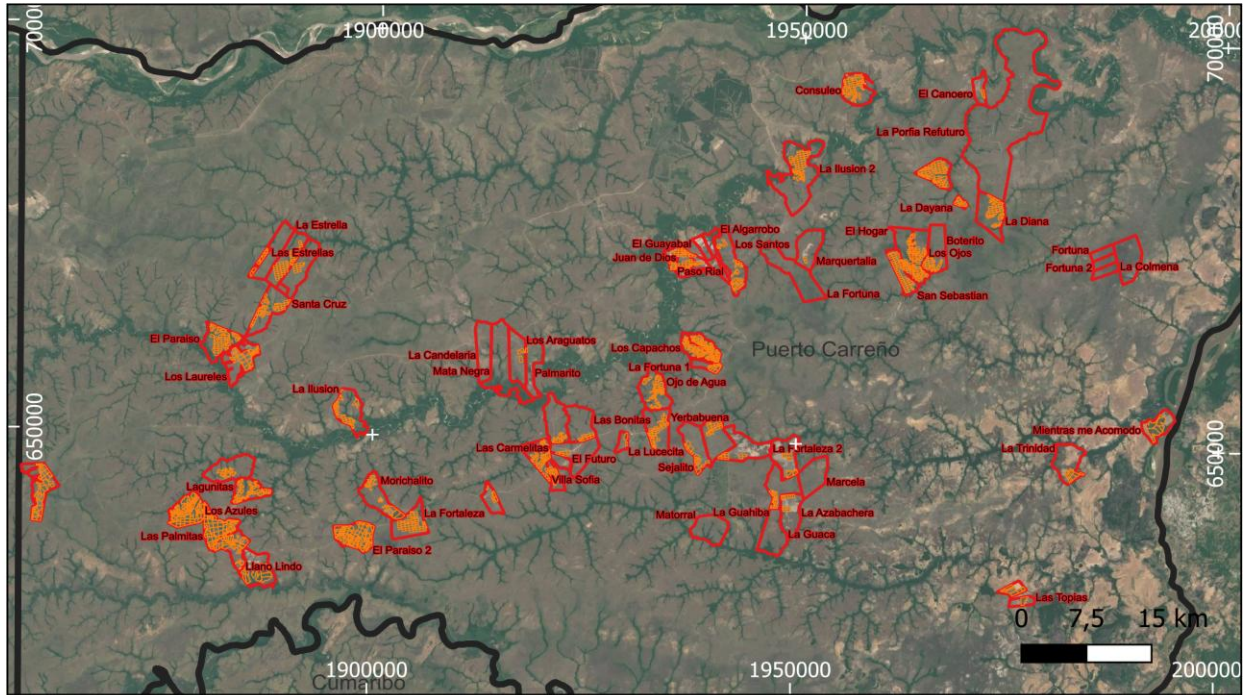
CRS: MAGNA-SIRGAS / Colombia East zone
 Proj: Transverse Mercator
 EPSG:3118
 Units: meters

FORLIANCE
GROWING CLIMATE ACTION

Sources: GADM, OSM, Project Partners

Date of creation: 05-11-2024

Figure 2a. Project area



Planted project area

PR 2024 Vichada GS-ID: 4221

Legend

- Planted project area
- Project Properties
- Administrative Boundaries

Company	Property area (ha)
Inverbosques	18,131.73
Aldea Forestal	3,282.26
Total	21,413.99

CRS: MAGNA-SIRGAS / Colombia East zone
 Proj: Transverse Mercator
 EPSG:3118
 Units: meters

FORLIANCE
GROWING CLIMATE ACTION

Sources: GADM, OSM, Project Partners

Date of creation: 18-12-2024

Figure 2b. Project planted area

A.3 Technologies and/or measures

>>

The applied measure to remove GHG from the atmosphere is the afforestation of degraded grasslands with three main tree genera: *Acacia* sp, *Pinus* sp. and *Eucalyptus* sp. The project participants are starting planting plots introducing native species in already mature forest to support a natural transition into a biodiverse forest. This section presents the history and approach of both project participants, and briefly describes activities implemented as part of the project activities.

Project history and approach

- Aldea Forestal

Between 2009 and 2015, an average of 500 hectares were established annually, with a certified nursery and farms registered in the Colombian Agricultural Institute (ICA). The total project area of the six properties for the respective Management Unit is 7,371 ha. The planting area covers 3,282.26 ha, of which ~85% are planted with *Pinus caribaea*, ~10% with *Acacia mangium* and ~5% *Eucalyptus pellita*. The exact areas per species and year are given in the document VICH_MUs_Overview⁶.

Since 2011, the unit has had an Environmental Management Plan adopted by the environmental authority CORPORINOQUIA; it is in effect and includes environmental permits.

In the year 2020, the organization declared to dedicate the afforested areas for conservation and protection and that its activities shall be of low impact. It was reclassified under FSC as SLIMF (Small or Low Intensity Managed Forest). The reclassification was also requested with the corresponding national entities.

Through the years and its experience, the organization has its own internationally certified Forestry Business Model, which can be replicated in the region and contributes to the United Nations Sustainable Development Goals (SDGs). After planting, the main forest management activities include pest and disease monitoring, and fire management.

- Inverbosques

The forestry project managed by Inverbosques S. A. began in 2009. The company is equally following a forest management plan to ensure the sustainability and management of the forestry project. It performs forestry operations with appropriate quality standards, protect the physical integrity of workers and / or collaborators, and effectively and efficiently use financial, natural and technological resources in the development of the forestry operations. Thus, due to management and technical actions, Inverbosques has established an average annual planting of more than 1,000 new ha. By 2024, Inverbosques has planted 18,131.73 ha with *Acacia mangium*, *Eucalyptus pellita*, *Eucalyptus sp.* and *Pinus caribaea*. Similar to Aldea Forestal, Inverbosques transitioned to a SLIM certification under the FSC, which means the project transitioned from a rotation to a conservation model.

Enriching planting with native species in existing *Acacia* and *Eucalyptus* plantations as part of the restoration activities are performed in order to improve environmental conditions, promote biodiversity development, water regulation, soil enrichment and carbon sequestration. These areas were identified through the evaluation with satellite images where a preliminary selection was made. This evaluation was carried out taking into account the following parameters:

- Classification of the planting lots established between 2007 and 2015
- Search of images from Landsat 4 and 7 (Infrared) satellites existing prior to the planting dates
- Implementation of Sentinel images for the evaluation of the areas with presence of petroferric gravel
- Verification of these results in the field, through the establishment of trial pits to identify the degraded type of soil.



Figure 3. Identification of soil type through establishment of calicatas

After the type of soil evaluation, important native species are identified in order to determine the predominant species to establish a forest enrichment process:

- Congrio (*Acosmium nitens*)
- Saladillo Blanco (*Vochisia lemanii*)
- Simaruba (*Simaoruba amara*)
- Yopo (*Anadenanthera peregrina*)
- Guarupayu (*Tapirira guianensis*)
- Jacarandá (*Jacaranda copaiba*)

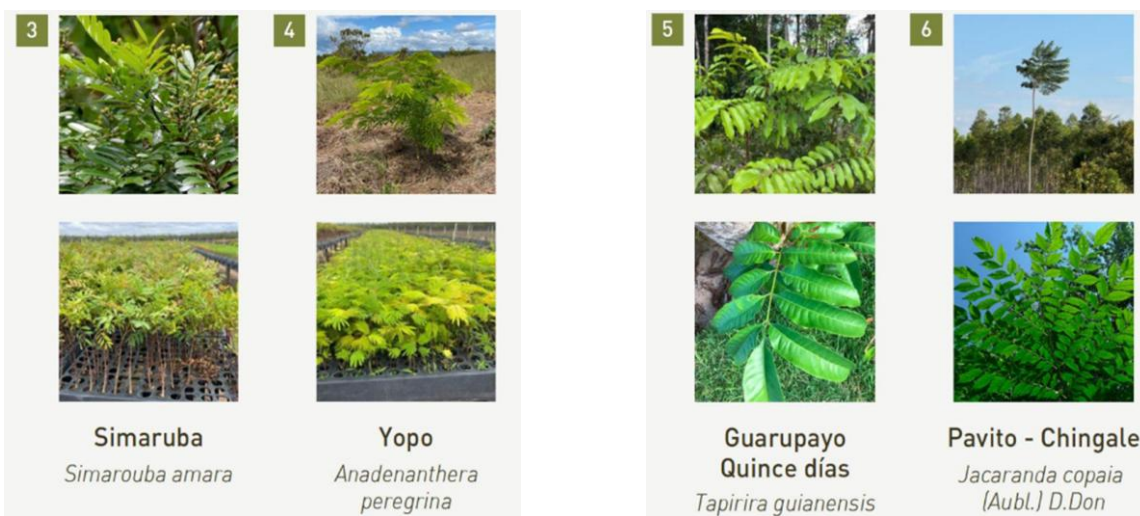


Figure 4. Native species

The enrichment designs consider blocks/plots of five to ten hectares with one native species streamlining the measurement, control and development process. The proposed plantation density will be 330 trees per hectare with fertilizer application to all the individuals.



Figure 5. Forest enrichment design

Silvicultural activities implemented

The forest management plans verified by FSC are available as supporting documentation.

The main activities implemented in Aldea Forestal, which are part of the current silvicultural management system (conservation with a FSC SLIM certification) consist of surveillance, maintenance, permanent plots' monitoring, pests and weed control, and forest fires preventive measures.

In the case of Inverbosques, silvicultural activities comprise saplings production at the company nursery, site preparation and planting, silvicultural maintenance, forest fires preventive measures, pests and diseases control, and selective thinning. A summary of silvicultural activities implemented over the project history is given in the Support Information folder.

- Nursery

Inverbosques has a nursery in the zone "Esmeralda" in the property Las Bonitas with a capacity of at minimum 10,000,000 seedlings per year. Seeds are purchased directly from seed orchards that offer a certain degree of guarantee in genetics, purity, germination, health and quality. The nursery has an irrigation system and applies limited fertilization.



Figure 6. Nursery beds with mature seedlings

- Site preparation and planting

Site preparation is also defined by the forest management plan. After an initial risk evaluation, the project proceeds to the site preparation considering its land cover. It is important that the residues remain on site so that they are incorporated into the soil through decomposition processes. No intervention is carried out in the natural forest, nor in the margins of water sources. The density of the plantation is determined by the geometric distribution of the trees in the field, generally using spacing of 3.5 m X 2.55 m for a density of 1,111 trees per hectare; or 3.5 m X 2.14 for an average density of 1,333 trees per hectare.

- Management

Fertilization with important nutrients like nitrogen, phosphorus, potassium and some other nutrients is done in the first months after plantation. Eight days after planting, it is done through base application and later surface banding is applied. Weeding is done using mechanical and chemical methods depending on the size and location of the weeds and trees. Pruning is applied in the early growing years to encourage the growth of high trunks. Phytosanitary health is ensured by following the integrated pest management approach (IPM) building on resilient species, capacity building of workers, pest monitoring and biological and mechanical control mechanisms.

Another key process in forest plantations is forest fires. Inverbosques approach for this process is the preventive management in two areas: 1) The creation of the fire brigade and 2) Firebreak barriers around the plantations.

Social Aspects

The Vichada region in Colombia faces significant challenges in terms of poverty and development. In terms of poverty, Vichada has high poverty rates, with around 67% of the population experiencing unsatisfied basic needs, for instance only 6.4% of the population has sewage systems; 36.8% access to water supply, 45% access to electricity and 5.2% access to internet, just to mention some. This is particularly severe among indigenous communities, which make up a significant portion of the population² in the region.

In terms of development, Vichada is the poorest department in Colombia, struggling with economic development due to its remote location and limited infrastructure. This also impacts access to essential services like healthcare and education.

The Vichada Climate Reforestation Project has a vision and mission beyond reforestation and planting trees, the project is deeply committed to the social and economic development of the Vichada Region. As a project with the goal to boost development and fair labor in a remote region, the social aspects of the project are nearly equally important to the project developers as the forest management activities themselves.

- Key aspects of the Vichada Climate Reforestation Project's social impacts:

Community engagement & Development

The project works closely with local communities to ensure that reforestation efforts are sustainable and beneficial. They involve community members not only in the planting process, education and training on sustainable land management practices, but also providing direct, accessible and trustable communication channels, such as semestral community newspaper to provide information about:

- Socialization of Inverbosques Social Policy
- Outreach and relationship building with neighbors
- Approaching and establishing relationships with local authorities

² [The International Federation of Red Cross and Red Crescent Societies \(IFRC\)](#)

- Socialization of the Inverbosques hotline
- Follow-up on community relations and training strategies
- Awareness-raising workshops on issues of general interest
- Play and recreational activities
- Contests related to topics of social and environmental interest



Figure 7. Outreach and relationship building with neighbors through activities such as planting or distribution of the Inverbosques Magazine

Support to Indigenous Communities

Vichada region is home to several Indigenous Reserves “resguardos”, primarily inhabited by the Sikuani, Piapoco, Piaroa, Puinave, Curripaco, and Cubeo peoples³. These reserves are crucial for preserving the cultural heritage and traditional lifestyles of the indigenous communities in the region who are actively involved in preserving their natural environment and combating deforestation.

These reserves are not only important for cultural preservation but also for environmental conservation. The indigenous communities play a vital role in protecting the biodiversity of the region, which includes vast savannahs and parts of the Amazon rainforest.

³ [UN Colombia](#)

The principle of Free Prior and Informed Consent was applied and started end of November 2022 in accordance with the guidelines of the National Authority for Prior Consultation-DANCP of the Ministry of the Interior, as of Resolution ST-1186 of August 27, 2021 and identified with the internal code 02161, for the following Indigenous reserves:

- Guacamayas Maiporé
- Kanalitojo
- Piaroa de Cachicamo
- Caño Mesetas Dagua
- Caño Bachaco
- Caño La Hormiga
- Caño Guáripa



Figure 8. indigenous community Outreach

The entire process has been characterized by a respectful, transparent and participatory intercultural dialogue, recognizing the indigenous cultural plurality with a differentiated and ethnic social approach, honoring the ancestral uses and customs of the indigenous population, with a view to supporting and strengthening their cultural and identity traditions through the management of the Prior Consultation Agreements (PCA).

Economic opportunities & Infrastructure improvement

The project aims to create numerous job opportunities for local residents, helping to alleviate poverty and improve livelihoods. These jobs range from tree planting and nursery management to project monitoring and environmental education. By providing

stable employment, the project supports the economic development of the Vichada region. Furthermore, the infrastructure improvements in the project focus on public services such as creating better water access for the local population, improving and increasing internet access and diversifying the electricity sources.

Drinking water for local school

Inverbosques is committed to making a positive impact on local communities within the project zone. As part of their ongoing efforts to support education and health, they donated a small drinking water plant to the primary school in the La Esmeralda Community.

The new drinking water plant will ensure that students and staff at the primary school have access to safe, clean drinking water. This initiative is expected to significantly improve the overall health of the school community, reducing waterborne illnesses and promoting better hygiene practices. Additionally, by alleviating the burden of water scarcity, students can focus more on their studies, leading to improved educational outcomes.



Figure 9. Drinking water plant for the primary school of La Esmeralda

Additionally, a gender equity program will be applied by the project promoting equal opportunities for men and women in access to employment, working conditions, professional development, training and participation in decision-making processes. This approach helps to empower women and promote social inclusion, contributing to the overall development of the region. By reinvesting the income from carbon finance into these measures, the longevity and sustainability of the project is ensured.



Figure 10. Nursery workers: The nursery alone provides employment to more than 60 members of neighboring communities.

Educational Initiatives

Education is a cornerstone of the Vichada Climate Reforestation project's social programs. The project runs workshops and training sessions to raise awareness about the importance of reforestation and environmental conservation. These educational initiatives target schools, local organizations, and community groups, fostering a culture of environmental responsibility and sustainability.

The educational and training program is focused on improving livelihoods and income diversification activities, such as:

- Cultural exchange
- Forest fires prevention and mitigation
- Apiculture
- Handicrafts
- Business plans and project formulation

Through these comprehensive social programs, the project demonstrates a meaningful commitment to the development of the Vichada region, ensuring that their reforestation efforts have a lasting positive impact on both the environment and the local communities.



Figure 11. Capacity building and training of Inverbosques personnel

Project areas and Modelling Units

Between 2006 and 2024, project participants have afforested 21,413.99 ha. Out of them, Inverbosques manages 18,131.73 ha and Aldea Forestal 3,282.26 ha. The eligible area of the project is 21,423.92 ha (Figure 12).

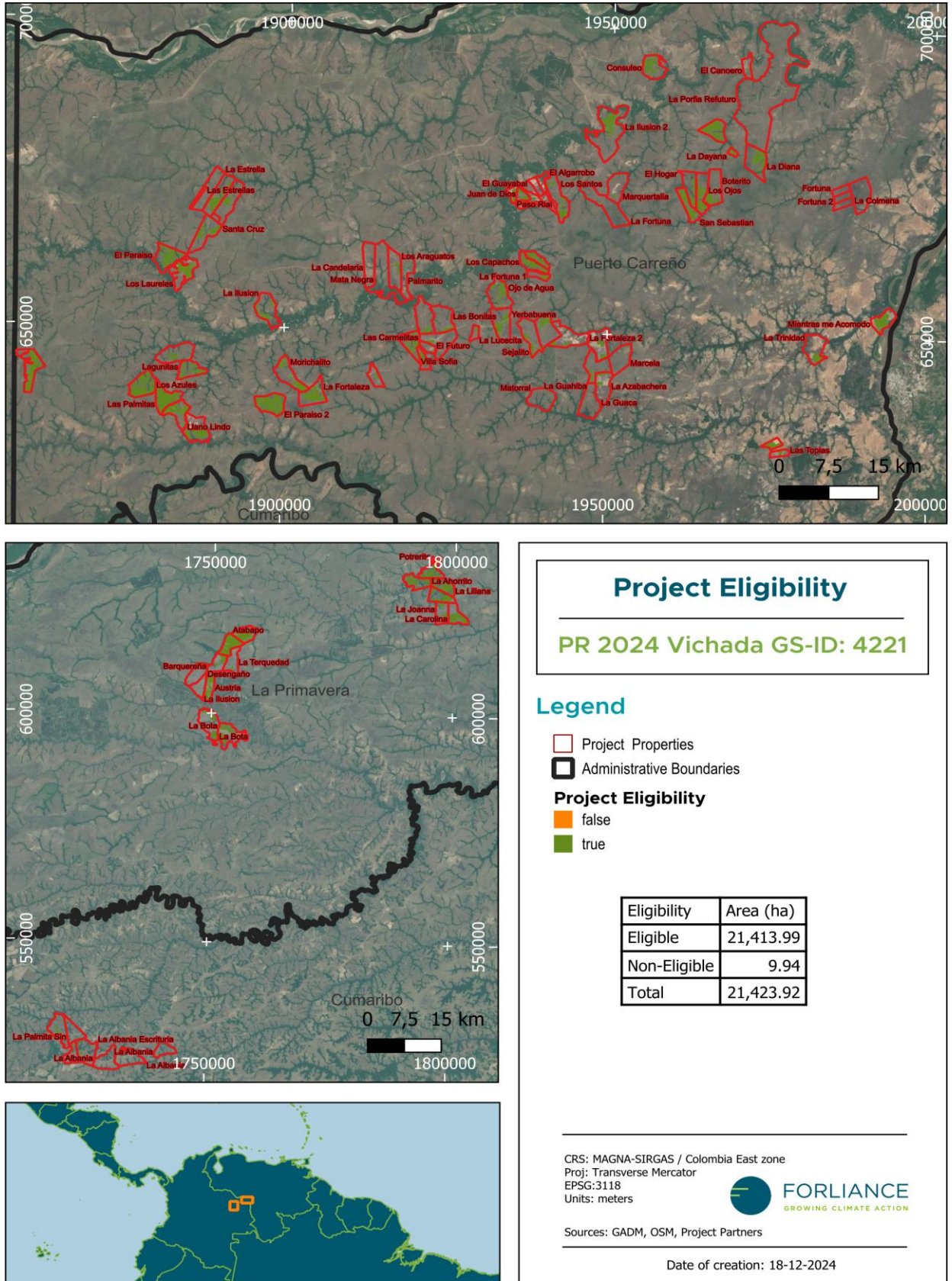


Figure 12. Project eligible areas

As part of the project design change and the renewal design certification, the project’s MUs were updated by following a different criterion for their definition. Until 2019, the project had 17 MU defined by company and establishment year⁹. From 2022 on, a sub-MU was added based on species as part of the project design change and renewal design certification¹⁰. Based on that, the project has a total of 23 Modelling Units (MU) and 56 sub-MU, defined as a coherent area of one planted species of the same planting year belonging to one company (e.g., the MU “AF-Am-2009” is managed by Aldea Forestal with the species *Acacia mangium* - planted in 2009 (see Table 2). A MUs comparative table is provided on the Support Information for better understanding of MUs changes.

Table 2: Updated Modelling Units in 2024

MU1_ID	MU1_Code	MU2_ID	MU2_Code	Eligible area (ha)
1	AF-2009	1.1	AF-Am-2009	270.07
2	AF-2010	1.2	AF-Pc-2009	238.07
3	AF-2011	2.1	AF-Pc-2010	532.74
4	AF-2012	3.1	AF-Pc-2011	351.88
5	AF-2013	4.1	AF-Pc-2012	443.81
6	AF-2014	5.1	AF-Pc-2013	564.25
7	AF-2015	6.1	AF-Ep-2014	129.27
8	IB-2009	6.2	AF-Pc-2014	504.53
9	IB-2010	7.1	AF-Pc-2015	232.32
10	IB-2011	7.2	AF-Ep-2015	15.26
11	IB-2012	8.1	IB-Am-2009	88.05
12	IB-2013	8.2	IB-Ep-2009	30.34
13	IB-2014	8.3	IB-Pc-2009	0.62
14	IB-2015	9.1	IB-Am-2010	691.58
15	IB-2016	9.2	IB-Ep-2010	428.05
16	IB-2017	9.3	IB-Et-2010	143.91
17	IB-2018	10.1	IB-Am-2011	1471.13
18	IB-2019	10.2	IB-Ep-2011	763.06
19	IB-2020	10.3	IB-Et-2011	42.78
20	IB-2021	10.4	IB-Eu-2011	3.86
21	IB-2022	11.1	IB-Am-2012	882.09
22	IB-2023	11.2	IB-Ep-2012	104.20
23	IB-2024	11.3	IB-Et-2012	10.15

12.1	IB-Am-2013	741.13
12.2	IB-Ep-2013	181.47
12.3	IB-Et-2013	10.03
12.4	IB-Eu-2013	3.83
13.1	IB-Am-2014	971.19
13.2	IB-Ep-2014	301.43
14.1	IB-Am-2015	570.49
14.2	IB-Ep-2015	313.05
14.3	IB-Eu-2015	18.99
15.1	IB-Am-2016	800.35
15.2	IB-Ep-2016	695.25
16.1	IB-Am-2017	250.43
16.2	IB-Ep-2017	749.37
17.1	IB-Am-2018	124.55
17.2	IB-Ep-2018	662.93
17.3	IB-Eu-2018	3.65
18.1	IB-Am-2019rep	100.62
18.2	IB-Ep-2019rep	19.14
18.3	IB-Pc-2019rep	4.69
18.4	IB-Am-2019	98.68
18.5	IB-Ep-2019	665.72
18.6	IB-PE-2019	845.42
18.7	IB-Pc-2019	5.84
18.8	IB-Pt-2019	0.25
19.1	IB-Ep-2020	605.91
19.2	IB-Pc-2020	1071.11
19.3	IB-Ep-2020rep	7.18
20.1	IB-Ep-2021	869.26
20.2	IB-Pc-2021	1,039.67
21.1	IB-Ep-2022	821.78
21.2	IB-Pc-2022	139.47
22.1	IB-Ep-2023	638.15
23.1	IB-Ep-2024	140.70
Total		21,413.99

A.4 Scale of the project

The project eligible area covers 21,413.99 ha which is considered a large-scale project, as stated by Land Use & Forest Activity Requirements. V 1.2.1. The project can be defined as a grouped project being the project region the expansion areas as it is expected that new areas are incorporated.

A.5 Funding sources of project

The project has the support of some investment to initiate the plantation, with a legal contract allowing them to clearly identify the part and percentage of their share inside the project. This includes a transparent process to provide land tenure titles, specify the owners of the resources inside the project (wood, CO₂, and other resources). Further, the group cooperates directly with different organizations in the area. The management expertise of this cooperation is a must to administrate the forestry operations effectively, choose wisely the technical team for operational management and guarantee the permanence of the project, and therefore guarantee the predicted revenue from the project carbon sequestration potential -that is the main source of income for the project development.

SECTION B. APPLICATION OF APPROVED GOLD STANDARD METHODOLOGY (IES) AND/OR DEMONSTRATION OF SDG CONTRIBUTIONS

B.1. Reference of approved methodology (ies)

This project was certified in 2016 under the Gold Standard V 0.9. In 2019, it transitioned to the GS4GG. Currently, the project follows the approved Gold Standard Afforestation/Reforestation (A/R) GHG Emissions Reduction & Sequestration Methodology – Version 2.0.

B.2. Applicability of methodology (ies)

The Gold Standard Afforestation/Reforestation (A/R) GHG Emissions Reduction & Sequestration Methodology V 2.0 names six criteria for projects to apply the methodology. Their compliance is described below:

a. Projects can apply all silvicultural systems:

*i. **Conservation forests (no use of timber)***

ii. Forests with selective harvesting

iii. Rotation forestry

The project applies a conservation system (i).

b. All projects can include agriculture (agroforestry) or pasture (silvopasture) activities.

The project does not include agroforestry nor silvopastoral activities.

c. Project Areas shall not be on wetlands.

The project areas are not on wetlands. An eligibility analysis was developed from the project start date and also 10 years prior the start date. See Figure 13.

In June 2018, after the project start date, the Bitá River basin declared a Ramsar wetland area. It protects 822,600 ha. Since the declaration, a management plan has been developed for the Ramsar site by the Omacha Foundation, Orinoquia Foundation, National University of Colombia, and RESNATUR (a private nature reserve network). The plan focuses on fisheries but also splits the whole basin into three zones: Conservation, Restoration and Production¹². Additionally, an agreement has been made to create within the Ramsar site an ecological corridor (228,000 ha) -the largest in

Colombia- that connects the Upper and Middle Bitá rivers and allows movement of 34 species of medium- and large- sized mammals including tapir, jaguar, puma, river dolphins, otters and migratory fishes. Among others, the agreement was signed between the Ministry of Environment, the Omacha Foundation, the Project Design Developers-Folgers Inc., the Tapirs Specialist Group of IUCN SCC, the forestry sector, and the farmers who are located within the ecological corridor in the Ramsar site. These parties committed to undertake sustainable agricultural practices and livestock production, forestry and responsible fruit production within the corridor and support the monitoring of flagship wildlife populations. The Vichada Reforestation Project was part of this agreement and of the overall planning process.

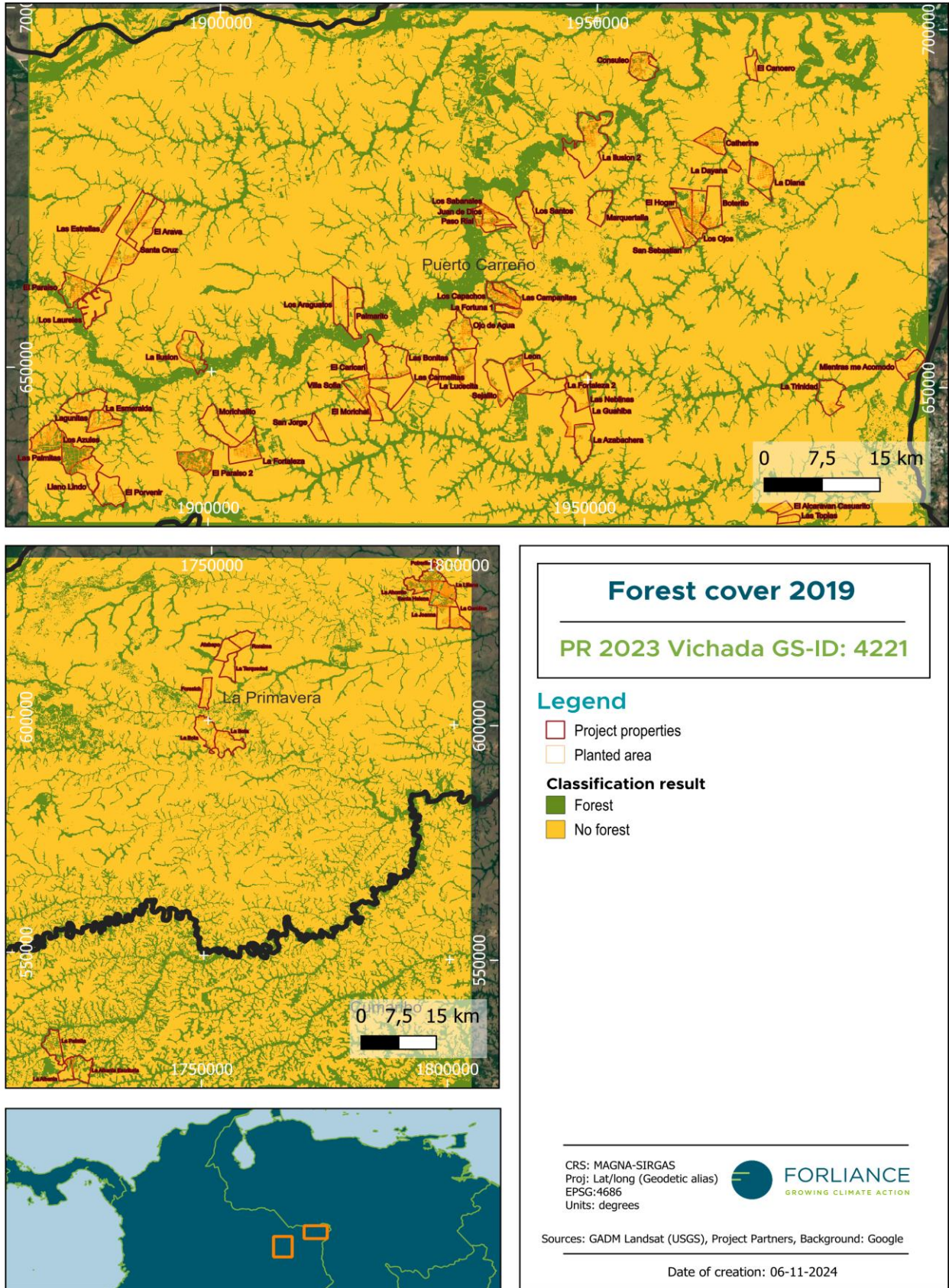


Figure 13a. Forest cover analysis

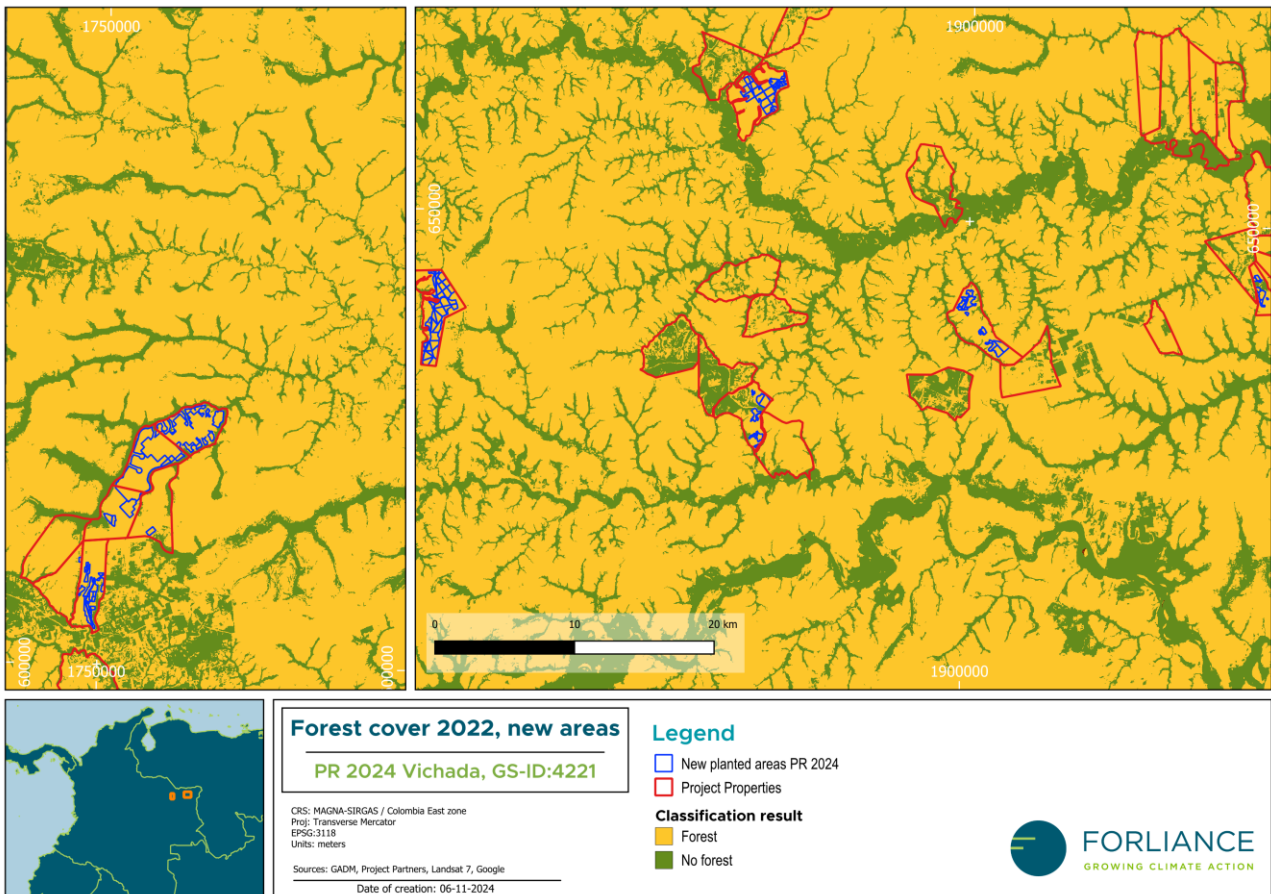


Figure 13b. Forest cover analysis

d. Project Areas with organic soils shall not be drained or irrigated (except for irrigation for planting).

The project area does not have organic soil but loamy mineral soils. No drainage or irrigation takes place in the project apart from during the nursery phase. See forest management plans.

e. Soil disturbance (through ploughing, digging of pits, stump removals, infrastructure, etc.) on organic soils shall be in less than 10% of the area that is submitted to certification (not 10% of the entire project area).

See above, the project area does not have organic soil.

Further, soil disturbance is insignificant. Soil is prepared manually and with small machinery as part of land preparation activities and only during planting years.

f. The most likely scenario without the project (baseline scenario) shall be defined for the project area. This scenario shall not show any significant increase of the Baseline biomass ('tree' and 'non-tree').

The baseline scenario is degraded grassland areas, which does not represent an increment in baseline biomass. See section B.4 for more details.

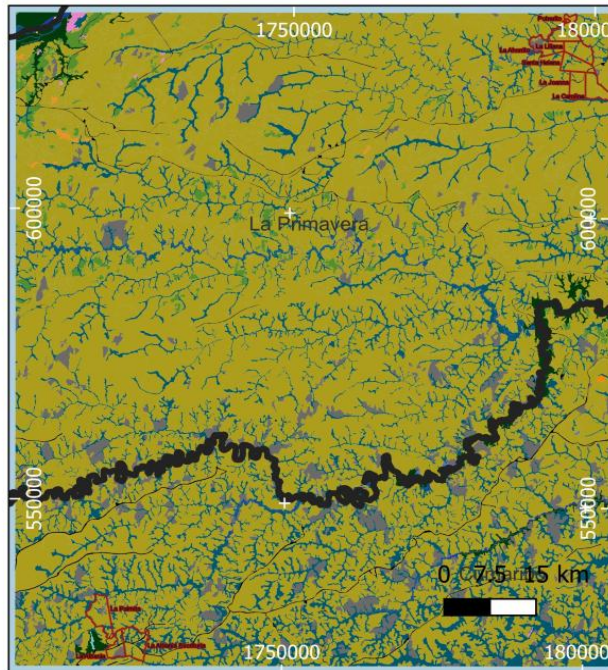
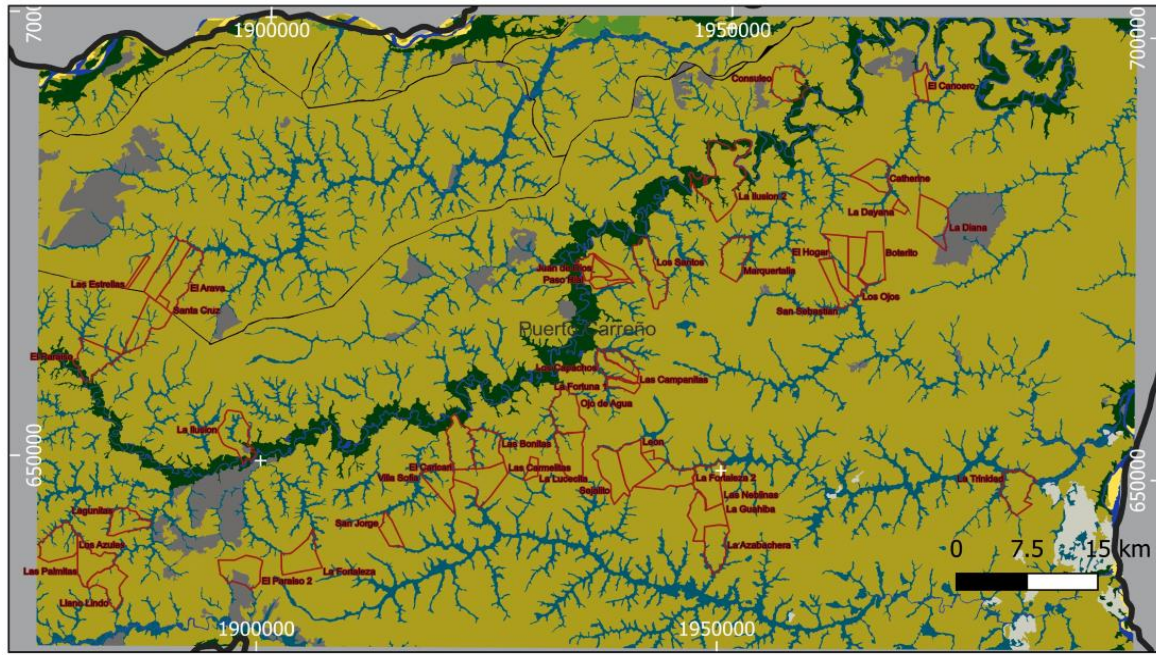
B.3. Project boundary

	Source	GHGs	Included?	Justification/Explanation
Baseline scenario	Tree biomass - aboveground	CO ₂	Yes	Mandatory (Section 3.1 of GHG methodology)
	Tree biomass - belowground	CO ₂	Yes	Mandatory
	Non-tree biomass - Aboveground	CO ₂	Yes	Mandatory
	Non-tree biomass - Belowground	CO ₂	Yes	Mandatory
	Soil	CO ₂	No	Inclusion optional; not considered
	Harvested wood (timber & energy wood)	CO ₂	No	Excluded by default
	Litter & Lying dead wood	CO ₂	No	Excluded by default
Project scenario	Tree biomass - aboveground	CO ₂	Yes	Mandatory
	Tree biomass - belowground	CO ₂	Yes	Mandatory
	Non-tree biomass - Aboveground	CO ₂	No	Excluded by default
	Non-tree biomass - Belowground	CO ₂	No	Excluded by default
	Soil	CO ₂	Yes	Inclusion optional; considered relevant

	Harvested wood (timber & energy wood)	CO ₂	No	Excluded by default
	Litter & Lying dead wood	CO ₂	No	Excluded by default
Project scenario – Other emissions	Biomass burning (Site preparation)	N ₂ O and CH ₄	No	3.8.2 “Where existing ‘tree’ and ‘non-tree’ biomass of the Baseline is burned for the purpose of land preparation, an additional 10% of the Baseline shall be deducted. This is to account for N ₂ O and CH ₄ emissions that are released during the burning process.”
	Fertilizer	CO ₂	Yes	3.8.3 “0.005 tCO ₂ per kg of nitrogen (N) fertiliser shall be deducted”
	Combustion of fossil fuel	CO ₂	No	3.8.4 “CO ₂ and Non-CO ₂ greenhouse-gas emissions caused by the use of fossil fuel from project activities (flights, management operations, etc.) are insignificant and may therefore be neglected.”
	N-fixing trees	CO ₂	No	3.8.5 “CO ₂ and Non-CO ₂ greenhouse-gas emissions caused by the use of N-fixing species may be conservatively assumed to be zero”

B.4. Establishment and description of baseline scenario

The baseline scenario has remained the same since the Project Design Document in 2016. Two maps were produced to outline the land use prior the project start date and at the last performance review. From the maps below, the main land use in the project area is grassland with patches of pastures and previously validated and verified forest plantation. The land use is based on the official land use classification of Colombia.



Land use 2002

PDD Vichada GS-ID: 4221

Legend

- Project Properties

Land use 2000 - 2002

- 1.2.2. Red vial, ferroviaria y terrenos asociados
- 2.3.1. Pastos limpios
- 2.4.1. Mosaico de cultivos
- 2.4.3. Mosaico de cultivos, pastos y espacios naturales
- 3.1.1. Bosque denso
- 3.1.4. Bosque de galeria y ripario
- 3.2.1. Herbazal
- 3.2.3. Vegetacion secundaria o en transicion
- 3.3.1. Zonas arenosas naturales
- 3.3.2. Afloramientos rocosos
- 3.3.4. Zonas quemadas
- 4.1.1. Zonas Pantanosas
- 5.1.1. Rios (50 m)
- 5.1.2. Lagunas, lagos y cienagas naturales

CRS: MAGNA-SIRGAS
 Proj: Lat/long (Geodetic alias)
 EPSG:4686
 Units: degrees

FORLIANCE
GROWING CLIMATE ACTION

Sources: Col. Government (Cobertura Tierra), GADM, Project Partners

Date of creation: 07-07-2023

Figure 14a. Land use 2002

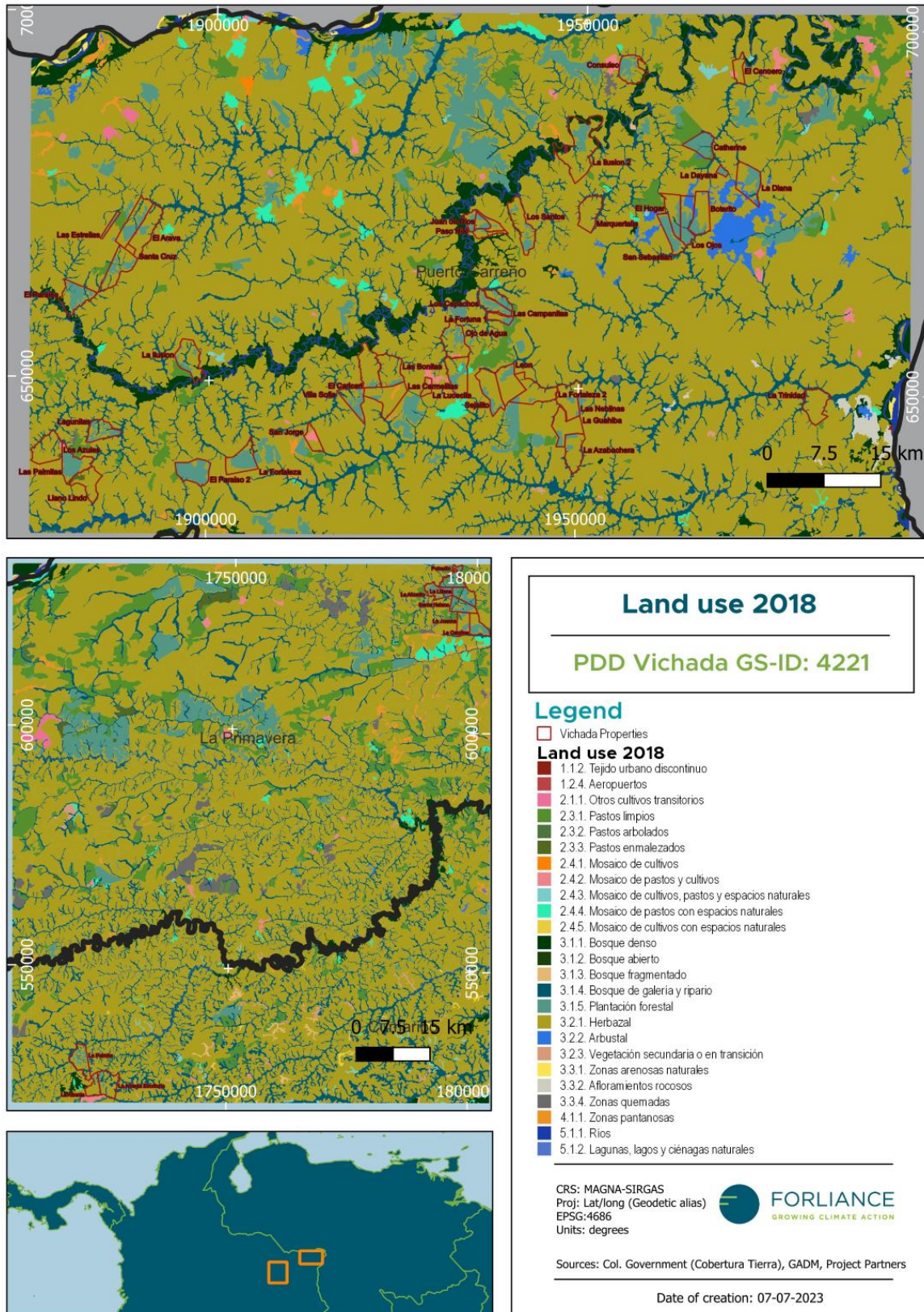


Figure 14b. Land use 2018

Regarding agricultural productivity, livestock farming in Vichada is characterized by traditional extensive livestock farming, with low technological adoption and conventional production models that result in low profitability and productivity (Alcaldia de Puerto Carreño, 2016;2020). Similar, one of the main gaps to boost this sector is the lack of innovation to improve pastures related to the soil fertility and characteristics (Muñoz et al.,2022)

Both Aldea Forestal and Inverbosques have done several soil analyses prior and during the project implementation, where the main soils types present the following characteristics:

- Low natural fertility
- Low base saturation
- High aluminium saturation
- Poor in phosphorus nutrients
- Susceptible to water erosion

In relation to the poor soil profile, fire management in the region is one of the activities that has impacted the land use change from grasslands to agricultural production. Farmers or cattle ranchers renew pastures in the dry season to increase soil productivity and to expand to new areas for agriculture. Nonetheless, the fires become uncontrolled fires expanding over grasslands and other land uses (Hernández & Mendoza, 2021). Therefore, the main land use for all areas within the project boundary is degraded grasslands.

B.5. Demonstration of additionality

Use this table for Automatic Additionality Only – delete if N/A

Specify the methodology, activity requirement or product requirement that establishes deemed additionality for the proposed project (including the version number and the specific paragraph, if applicable).	The project additionality was assessed in 2015 when the project design was certified. The methodology followed was the Option 1 – AR CDM Tool.
Describe how the proposed project meets the criteria for deemed additionality.	The project additionality assessed in 2015 is provided in the Support Information folder ²¹ . Further, the project has gone under performance

	review in 2019, where additionality was assessed too.
--	---

B.5.1 Prior Consideration

As a retroactive project, prior consideration requirement was fulfilled as part of the project Design Certification in 2016.

B.5.2 Ongoing Financial Need

Extensive grazing was and is still the main land use activity in this area. This activity is attractive to the landowners as it requires comparatively low investment and has shorter investment return periods. Forest plantations on the other hand need moderately high levels of technical knowledge to be implemented and managed, which the average landowner does not possess in this area. Projects that are developed according to international standards regarding environmental and social norms (SDGs implementation, e.g.) require a level of investment and technical knowledge that is not found in this region. These conditions have not changed since the project implementation and previous monitoring period.

Since the project is currently under a conservation approach, no income is obtained from harvesting and selling timber or any non-timber forest product. Therefore, the income from the sale of carbon credits is the main flow to finance the project activities –since forest nursery, maintenance, and establishment-. The revenue generated through the certification allows the project participants to additionally execute fire and pest management activities, increase and finance valuable jobs; and maintain the forestry operation in the region.

For example, in the case of Inverbosques, they hired 110 employees for 2022 (20% female genre). The average salary is twice the Colombian minimum wage. All workers have been trained in personal financial management and working operational procedures. The project brings additional economic co-benefits to the participants and workers and increases the working opportunities on the region (almost 2/3 of Vichada population are below the poverty line). Furthermore, Inverbosques and Aldea set workshops to teach/train locals activities related with the biodiversity and ecosystems conservation.

Regarding financial needs, the financial model for both organizations is available to the auditor as supporting information. The financial model includes costs such as renting the land, forester rangers, FSC certification, forest insurance, field camps and

maintenance, phytosanitary control maintenance, administrative costs, CAPEX (establishment and maintenance of forest plantation). The income from the sales of carbon credits is needed for the continuation and expansion of forestry activities in the region (supporting documentation available).

B.6. Sustainable Development Goals (SDG) outcomes

Relevant Target/Indicator for each of the three SDGs

SUSTAINABLE DEVELOPMENT GOALS TARGETED	MOST RELEVANT SDG TARGET	SDG IMPACT
		INDICATOR (PROPOSED OR SDG INDICATOR)
13 Climate Action (mandatory)	13.2 Integrate climate change measures into national policies, strategies and planning	Amount of GHGs emissions avoided or sequestered
8 Decent Work and Economic Growth	8.5: By 2030, achieve full and productive employment and decent work for all women and men, including for young people and persons with disabilities, and equal pay for work of equal value.	Increased employment opportunities – Total number of jobs
		Enhanced opportunities for income generation – Total number of employees earning above local minimum wage
15 Life on Land	15.2 By 2020, promote the implementation of sustainable management of all types of forests, halt deforestation, restore degraded forests and substantially increase afforestation and reforestation globally.	Increased area under tree canopy cover (which might not be large enough to be considered forest as per DNA or host country definition of forest) – Total area of Trees Planted
		Enhanced biodiversity – Number of protected threatened species in the project area & conservation status of species

	protect and prevent the extinction of threatened species.	Enhanced biodiversity – Total protected Land Area
--	---	--

B.6.1 Explanation of methodological choices/approaches for estimating the SDG Impact

>>

SDG 13

The proposed project activity is afforestation. The suggested way to measure the project's contribution to this SDG and specific target is estimating the amount of CO2 sequestered by the project activities. This estimation is based on the Gold Standard Methodology for Afforestation/Reforestation (A/R) GHG Emissions Reduction & Sequestration – Version 2.0. Following the same methodology and based on the baseline scenario identified for the project area, the baseline GHG is calculated based on biomass values given in the literature developed for the region.

SDG 8

The project aims to create numerous job opportunities for local residents, helping to alleviate poverty and improve livelihoods. These jobs range from tree planting and nursery management to project monitoring and environmental education. By providing stable employment, the project supports the economic development of the Vichada region.

Additionally, the project promotes equal opportunities for men and women in access to employment, working conditions, professional development, training and participation in decision-making processes. This approach helps to empower women and promote social inclusion, contributing to the overall development of the region.

By reinvesting the income from carbon finance into these measures, the longevity and sustainability of the project are ensured.

SDG 15

As part of the Forest Stewardship Council (FSC) certification and their strong commitment to biodiversity conservation, the project not only focuses on carbon sequestration through plantations but also ensures the protection of natural areas within its area of influence, identifying High Conservation Value areas, which provide

various ecosystem services to local communities. These processes conserve and protect natural areas, enabling the provisioning, regulation, cultural, and support services that benefit different local communities.

Baseline estimates

For SDGs 8, the baseline is assumed to be zero for all indicators, since without the project, there would not be any improvement in working conditions or quality education in the project areas.

In the case of SDG 15, the baseline for the monitoring indicator “Total area of Trees Planted” is also zero since the area would not have been afforested without the project (see section B.5.). The baseline for the indicator “Total protected Land Area” is zero because, in the absence of the project, those areas would be under CORPORINOQUIA (regional environmental authority) vigilance, which does not ensure that deforestation or forest degradation is prevented. That is because of CORPORINOQUIA’s low capacities for effective monitoring and control in the Colombian Plains.

For the monitoring indicator “Number of protected threatened species in the project area & conservation status of species,” the baseline should be the number of species present in the project area before the plantations. However, in 2015, at the validation stage, a baseline study was conducted only for bird species and only on La Paz properties.

As part of the FSC SLIM Certification, both companies have monitored wildlife. As a result, different species with high conservation values have been observed within the project area and categorized according to the IUCN Red List of Threatened Species. For instance, Tapir (*Tapirus terrestris*), Jaguar (*Panthera onca*), and Puma (*Puma concolor*).

Results showed 21 species²³ in the Aldea Forestal project area, where monitoring was conducted based on direct observations. Among the species found, ten were birds, ten different types of mammals, and one reptile.

In Inverbosques’s project areas, two methodologies were implemented. On the one hand, biologist-monitored camera traps will be used to monitor wildlife in HCV areas

and classified observations per species and a threatened status. On the other hand, forest keepers recorded direct observations. Yet, the scope of the latter methodology only included identification per common name²⁴. Results from both monitoring evidenced the presence of 31 species. Among them, there are four birds and ten mammals of different types. Note that scientific names of forest keepers’ reports were searched based on common names.

For more information on biodiversity monitoring results is available on the Support Information folder.

B.6.2 Data and parameters fixed ex ante

SDG13

Data/parameter	Emission removals in tCO2e - Baseline
Unit	Tonnes of CO2e/hectare
Description	The Baseline Scenario is defined as the land use scenario that would exist in the absence of the project.
Source of data	Ruegg, 2017; Etter et al, 2011; San Jose et al, 1988
Value(s) applied	Baseline = AGB Baseline + BGB Baseline Baseline: 8.64 tCO2/ha
Choice of data or Measurement methods and procedures	Biomass stock of baseline scenario was identified from literature. It is defined for the project design certification and revised every project renewal design certification.
Purpose of data	Calculation of GHG baseline scenario
Additional comment	As part of the Renewal Design Certification the baseline GHG was updated based on literature available for Colombia

Data/parameter	AGB Baseline in tCO2e
Unit	Tonnes of CO2e/hectare
Description	The AGB Baseline Scenario is defined as the AGB of the land use scenario that would exist in the absence of the project.
Source of data	Ruegg, 2017; Etter et al, 2011; San Jose et al, 1988
Value(s) applied	AGB Baseline: 5.98 tCO2/ha

Choice of data or Measurement methods and procedures	Biomass stock of baseline scenario was identified from literature. It is defined for the project design certification and revised every project renewal design certification.
Purpose of data	Calculation of GHG baseline scenario
Additional comment	As part of the Renewal Design Certification the baseline GHG was updated based on literature available for Colombia

Data/parameter	BGB Baseline in tCO ₂ e
Unit	Tonnes of CO ₂ e/hectare
Description	The Baseline Scenario is defined as the BGB land use scenario that would exist in the absence of the project.
Source of data	Ruegg, 2017; Etter et al, 2011; San Jose et al, 1988
Value(s) applied	BGB Baseline: 2.66 tCO ₂ /ha
Choice of data or Measurement methods and procedures	Biomass stock of baseline scenario was identified from literature. It is defined for the project design certification and revised every project renewal design certification.
Purpose of data	Calculation of GHG baseline scenario
Additional comment	As part of the Renewal Design Certification the baseline GHG was updated based on literature available for Colombia

Data/parameter	Emission removals in tCO ₂ e – Leakage
Unit	Tonnes of CO ₂ e/ha
Description	Leakage is emissions that occur due to a shift of activities from the inside of a project area to the outside of a project area.
Source of data	Leakage assessment was conducted for the project design certification in 2016. A FORLIANCE’s representative and a third party interview ex-landowners and neighbors to inquire on displacement of previous economic activities implemented over the project area.
Value(s) applied	– Leakage: 0 tCO ₂ /ha
Choice of data or Measurement methods and procedures	Gold Standard Afforestation/Reforestation (A/R) GHG Emissions Reduction & Sequestration Methodology, Version 2 ²⁶
Purpose of data	Calculation of leakage
Additional comment	-

Data/parameter	Emission removals in tCO ₂ e – Soil Carbon
Unit	Tonnes of CO ₂ e/ha
Description	The soil organic carbon is not sampled during inventory activities
Source of data	Soil Carbon is estimated based on the GS Tool for A/R Projects.
Value(s) applied	Default data used was selected from the tool. It includes: Climatic region: Tropical, wet Soil type: High Activity Clay Soils Soil Carbon (tCO ₂ e/ha/yr) = 2,09
Choice of data or Measurement methods and procedures	A/R Soil Carbon Tool of the Gold Standard
Purpose of data	Calculation of soil organic carbon project scenario
Additional comment	For more information, please refer to the carbon model. See Support Information>01_Climate_SDG13

Data/parameter	Emission removals in tCO ₂ e – Biomass Expansion Factor (BEF)														
Unit	Dimensionless														
Description	BEF is calculated from the ratio of aboveground biomass and bole biomass (defined by a merchantable measure or a minimum DBH) ²⁷ .														
Source of data	IPCC LUCLUF, Good Practice Guidance for Land Use, Land-Use Change and Forestry, Annex 3A.1 Biomass Default Tables for Section 3.2 Forest Land														
Value(s) applied	<table border="1"> <thead> <tr> <th>Specie</th> <th>BEF</th> </tr> </thead> <tbody> <tr> <td>Acacia mangium</td> <td>1.5</td> </tr> <tr> <td>Eucalyptus pellita</td> <td>1.5</td> </tr> <tr> <td>Eucalyptus tereticornis</td> <td>1.5</td> </tr> <tr> <td>Eucalyptus urophylla</td> <td>1.5</td> </tr> <tr> <td>Pinus caribaea</td> <td>1.5</td> </tr> <tr> <td>Pinus oocarpa</td> <td>1.5</td> </tr> </tbody> </table>	Specie	BEF	Acacia mangium	1.5	Eucalyptus pellita	1.5	Eucalyptus tereticornis	1.5	Eucalyptus urophylla	1.5	Pinus caribaea	1.5	Pinus oocarpa	1.5
Specie	BEF														
Acacia mangium	1.5														
Eucalyptus pellita	1.5														
Eucalyptus tereticornis	1.5														
Eucalyptus urophylla	1.5														
Pinus caribaea	1.5														
Pinus oocarpa	1.5														

Choice of data or Measurement methods and procedures	BEF values were selected based on IPCC data.
Purpose of data	Calculation of project scenario
Additional comment	-

Data/parameter	Emission removals in tCO ₂ e - Wood density														
Unit	ton/m ³														
Description	Wood density is the ratio of oven-dry weight of wood over its green volume														
Source of data	MINAM et al., 2021. https://biocarbono.org/wp-content/uploads/2022/12/Publicacion-GEI-31.10.22.pdf														
Value(s) applied	<table border="1"> <thead> <tr> <th>Species</th> <th>Wood density (ton/m³)</th> </tr> </thead> <tbody> <tr> <td>Acacia mangium</td> <td>0.55</td> </tr> <tr> <td>Eucalyptus pellita</td> <td>0.71</td> </tr> <tr> <td>Eucalyptus tereticornis</td> <td>0.79</td> </tr> <tr> <td>Eucalyptus urophylla</td> <td>0.71</td> </tr> <tr> <td>Pinus caribaea</td> <td>0.42</td> </tr> <tr> <td>Pinus oocarpa</td> <td>0.48</td> </tr> </tbody> </table>	Species	Wood density (ton/m ³)	Acacia mangium	0.55	Eucalyptus pellita	0.71	Eucalyptus tereticornis	0.79	Eucalyptus urophylla	0.71	Pinus caribaea	0.42	Pinus oocarpa	0.48
Species	Wood density (ton/m ³)														
Acacia mangium	0.55														
Eucalyptus pellita	0.71														
Eucalyptus tereticornis	0.79														
Eucalyptus urophylla	0.71														
Pinus caribaea	0.42														
Pinus oocarpa	0.48														
Choice of data or Measurement methods and procedures	<p>Values were selected at species or genus level from literature about species carbon sequestration performance in the project region.</p> <p>Tree biomass is estimated by multiplying volume per wood density per species.</p>														
Purpose of data	Calculation of project scenario														
Additional comment	<p>Wood density values were taken from research developed in forest plantations of the project region</p> <p>Further details in Support Information>01_Climate_SDG13</p>														

Data/parameter	Root-to-Shoot Ratio (R-t-s)
Unit	Dimensionless
Description	Ratio of the weight of the roots to the weight of the top of the tree. Used for belowground tree biomass estimation.

Source of data	IPCC LUCLUF, Good Practice Guidance for Land Use, Land-Use Change and Forestry, Annex 3A.1 Biomass Default Tables for Section 3.2 Forest Land														
Value(s) applied	<table border="1"> <thead> <tr> <th>Species</th> <th>R-t-S</th> </tr> </thead> <tbody> <tr> <td>Acacia mangium</td> <td>0.42</td> </tr> <tr> <td>Eucalyptus pellita</td> <td>0.42</td> </tr> <tr> <td>Eucalyptus tereticornis</td> <td>0.42</td> </tr> <tr> <td>Eucalyptus urophylla</td> <td>0.42</td> </tr> <tr> <td>Pinus caribaea</td> <td>0.42</td> </tr> <tr> <td>Pinus oocarpa</td> <td>0.42</td> </tr> </tbody> </table>	Species	R-t-S	Acacia mangium	0.42	Eucalyptus pellita	0.42	Eucalyptus tereticornis	0.42	Eucalyptus urophylla	0.42	Pinus caribaea	0.42	Pinus oocarpa	0.42
Species	R-t-S														
Acacia mangium	0.42														
Eucalyptus pellita	0.42														
Eucalyptus tereticornis	0.42														
Eucalyptus urophylla	0.42														
Pinus caribaea	0.42														
Pinus oocarpa	0.42														
Choice of data or Measurement methods and procedures	R-t-s values were selected based on IPCC data.														
Purpose of data	Calculation of project scenario														
Additional comment	-														

Data/parameter	Carbon fraction tC/t d.m.
Unit	Percentage
Description	Percentage of the biomass of the tree that is carbon.
Source of data	Gold Standard Afforestation / Reforestation (A/R) GHG Emissions Reduction & Sequestration Methodology
Value(s) applied	0.5
Choice of data or Measurement methods and procedures	Default value
Purpose of data	Calculation of project scenario
Additional comment	-

Data/parameter	C to CO2 factor
Unit	tCO2/tC
Description	Factor applied to convert carbon sequestered to CO ₂ e sequestered
Source of data	Gold Standard afforestation / reforestation (A/R) GHG emissions reduction and sequestration methodology
Value(s) applied	3.6667 (44/12)
Choice of data or Measurement methods and procedures	IPCC default value.
Purpose of data	Calculation of project scenario

Additional comment

SDG 8

Data/parameter	- Total number of jobs
Unit	Number
Description	Refers to total jobs generated because of the project
Source of data	Project activities and contracts
Value(s) applied	Baseline = 0
Choice of data or Measurement methods and procedures	The number of temporal and full-time jobs will be obtained cross-checking the contracts signed by the employees during the monitoring period.
Purpose of data	Contribution to SDG 8 Target 8.5
Additional comment	-

Data/parameter	Total number of employees earning above local minimum wage
Unit	Number of employees
Description	Refers to the total number of employees earning above the local minimum wage as per national laws
Source of data	Project activities and contracts
Value(s) applied	Baseline = 0
Choice of data or Measurement methods and procedures	The number of temporal and full-time jobs will be obtained cross-checking the contracts signed by the employees during the monitoring period
Purpose of data	Contribution to SDG 8 Target 8.5
Additional comment	-

SDG 15

Data/parameter	Total area of Trees Planted
Unit	Hectares (ha)
Description	Refers to area of land on which trees were planted during the reporting period.
Source of data	Project activity
Value(s) applied	Baseline = 0

Choice of data or Measurement methods and procedures	Measurement of the total planted area using GIS, satelital images Lansat 4 and 7 (infrared)
Purpose of data	Contribution to SDG 15 Monitor Target 15.2
Additional comment	-

Data/parameter	Number of observations or presence of endemic or threatened species in the project location according to the IUCN Red List
Unit	Number of species observed or presented in the project area
Description	<p>Refers to number of threatened species present on land and conservation status of the species in reporting period.</p> <p>Threatened species are any species (including animals, plants, fungi, etc.) which are likely to become an endangered species within the foreseeable future throughout all or a significant portion of its range. The term threatened is an umbrella term for a group of categories that capture various levels of threat to the species, ranging from vulnerable species to endangered species to critically endangered species.</p> <p>Project can refer to the following sources for further guidance and for clarification on the classification definitions cited herein:</p> <p>International Union for the Conservation of Nature Convention on International Trade in Endangered Species of Wild Fauna and Flora</p>
Source of data	Project Activity (Species monitoring)
Value(s) applied	Baseline: 31 species observed and monitored in the project area between birds, mammals, and reptiles.
Choice of data or Measurement methods and procedures	Registry of the observations from participatory monitoring involving employees and forest trainers Registry from the camera traps installed in the project area High Conservation Values
Purpose of data	Contribution to SDG 15 Monitor Target 15.5
Additional comment	-

Data/parameter	Total protected Land Area
Unit	Ha of functional ecosystems
Description	Refers to the total project area of land identified and marked as a protected area to enhance biological diversity. For example, the Gold Standard project is required to mark 10% of the project area as a protected area (LUF Activity Requirements).
Source of data	Project Activity
Value(s) applied	Baseline: 7,487 ha
Choice of data or Measurement methods and procedures	Measurement of the total planted area using GIS, satelital images Lansat 4 and 7 (infrared) and ground-trusting measurements
Purpose of data	Contribution to SDG 15 Monitor target 15.5
Additional comment	-

B.6.3 Ex ante estimation of SDG Impact

For SDGs 8 and 15 ex-ante estimations had to be done for the first time with the Design Certification Renewal request in 2023. Therefore, the long-term estimations are based on existing monitoring data. It is assumed that the total SDG impacts over the project lifetime are the current values plus little to no further growth for Aldea Forestal and approximately 25% for Inverbosques, as the latter is still increasing its operations. The resulting ex-ante estimations are described below for each SDG.

See SDG Impact Tool for more information on the status quo and the relevant supporting documentation.

SDG 13 Climate Action

The ex-ante estimations for SDG 13 are calculated using the Gold Standard afforestation / reforestation (A/R) GHG emissions reduction and sequestration methodology Version 2.0. This project estimates that it generates 195,986 tCO₂e/year on average, for MU planted until 2024: and a total of 5,879,566 tCO₂e during 30 years. The GHG removal is updated in every performance review.

SDG 8 - Decent Work and Economic Growth

Since growth has slowed down for Aldea Forestal, it is expected that the current number of employees and their payment will remain the same or, if needed, two more employees will be hired. As Inverbosques is still increasing its operations, it is assumed that the total SDG impacts over the project lifetime are the current observed values of 2022 plus a conservative 0% growth for Aldea Forestal and 10 up to 25% for Inverbosques.

Thus, the equations for the ex-ante estimations for both SDG 8 indicators are the following:

- Expected value by 2036_{AF} (n Jobs) = Status Quo 2022 * 1
- Expected value by 2036_{AF} (n Employees > minimum wage) = Status Quo 2022 * 1
- Expected value by 2036_{INV} (n Jobs) = Status Quo 2022 * 1.10 (1.25)
- Expected value by 2036_{INV} (n Employees > minimum wage) = Status Quo 2022 * 1.10 (1.25)
- Total project value by 2036 = Expected value by 2036_{AF} + Expected value by 2036_{INV}

Based on values from 2022, that means that Inverbosques (and thereby the whole project) is expected to hire 28 additional employees until the project ends in 2036, and 21 more employees will earn above local minimum wage.

Table 4: Ex-ante estimations for SDG 8 (rounded)

Indicator	Aldea Forestal		Inverbosques		Total Project	
	Baseline	Ex-ante 2036	Baseline	Ex-ante 2036	Baseline	Ex-ante 2036
Total number of jobs	0	4	0	140	116	144
Total number of employees earning above local minimum wage	0	4	0	103	86	107

SDG 15 – Life on Land

Like for SDG 8, it is assumed that the total SDG impacts over the project lifetime are the current observed values of 2022 plus 0% growth for Aldea Forestal and 25% for Inverbosques.

Thus, the equations for the ex-ante estimations for SDG 8 indicators are presented in the following paragraphs, while the summary of ex-ante estimations is given in Table 4.

Total area of Trees Planted

As Aldea Forestal finished establishment activities in 2018, its goal is to conserve, at least the planted areas under well condition.

$$\text{Ex-ante}_{AF} (\text{area trees planted}) = \text{Status Quo } 2022 * 1$$

It corresponds to the current Inverbosques planted area plus an expected 25% growth in planted areas.

$$\text{Ex-ante}_{INV} (\text{area trees planted}) = \text{Status Quo} * 1.25$$

Number of protected threatened species in the project area & conservation status of species

As described under B.6.1., baseline values were assumed as the results of this monitoring period results in terms of number of species.

Baseline AF= 21

Baseline Inverbosques= 31

Ex-ante values were estimated by assuming an increment of baseline, which represents future measurements of s species richness. For Aldea Forestal, a 25% increase is assumed, considering that the project area will not be extended, but the slow conversion into a more diverse forest will lead to more species and individuals using the project areas as a natural corridor or choosing the project area as their habitat. In contrast, for Inverbosques, a 25% increment is projected based on the company’s annual growth, which brings along an increment in the extension of conserved areas.

Ex-ante_{AF} (n Individuals of threatened species) = 21 * 1.25 = 26

Ex-ante_{INV} (n Individuals of threatened species) = 31 * 1.25 = 39

Total protected Land Area

The ex-ante estimation for protected land area assumes that the project continues to put 10% of the total project areas under conservation, as required by the standard. For Aldea Forestal, as it will not plant additional areas, the objective is to conserve under good conditions those areas and when possible, to increase such areas through the implementation of restoration or conservation activities. In the case of Inverbosques conserve more than 10% and it will add conservation areas to every expansion of the project area.

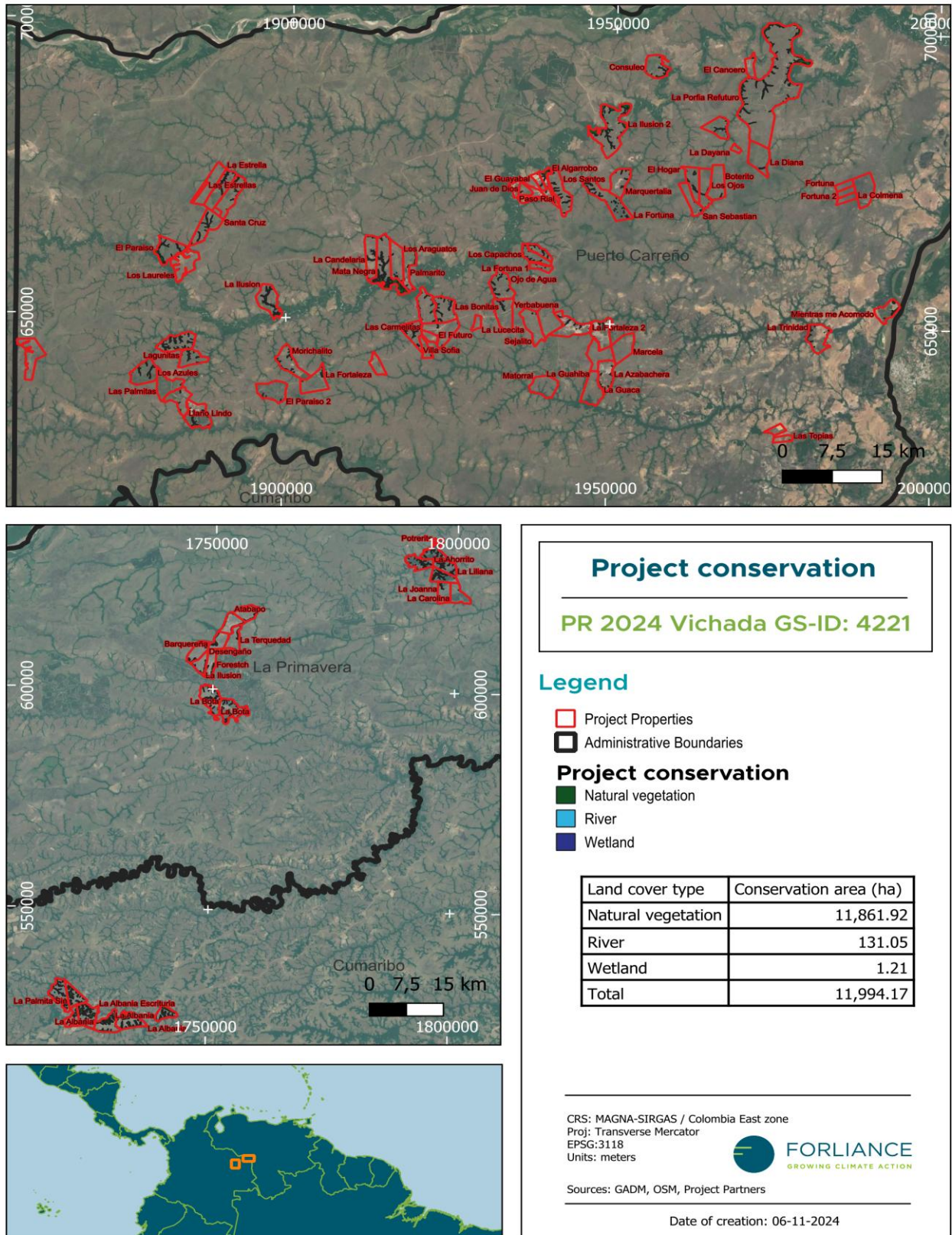


Figure 14. Conservation areas

Table 5 shows a summary of the baseline and ex-ante estimates for the SDG 15 indicators.

Table 5: Ex-ante estimations for SDG 15

Indicator	Aldea Forestal		Inverbosques		Total Project	
	Baseline	Ex-ante 2036	Baseline	Ex-ante 2036	Baseline	Ex-ante 2036
Total area of Trees Planted (ha)	3,282.26		11,182.54		14,464.8	
Number of observations of protected threatened species in the project area	21	26	31	39	52	65
Total protected Land Area					7,487	

B.6.4 Summary of ex ante estimates of each SDG Impact

SDG 13

YEAR	BASILINE ESTIMATE	PROJECT ESTIMATE	NET BENEFIT
Year 1	6,168	6,168	0
Year 2	6,168	6,168	0
Year 2	6,168	6,168	0
Year 4	6,168	6,344	176
Year 5	6,168	8,367	2,199
Year 6	6,168	21,065	14,897
Year 7	6,168	45,647	39,479
Year 8	6,168	62,000	55,832
Year 9	6,168	81,804	75,636
Year 10	6,168	107,369	101,201
Year 11	6,168	127,979	121,811
Year 12	6,168	157,856	151,688
Year 13	6,168	180,086	173,918
Year 14	6,168	205,268	199,100

Year 15	6,168	228,790	222,622
Year 16	6,168	263,674	257,506
Year 17	6,168	310,784	304,616
Year 18	6,168	322,856	316,688
Year 19	6,168	330,545	324,377
Year 20	6,168	332,146	325,978
Year 21	6,168	332,146	325,978
Year 22	6,168	332,146	325,978
Year 23	6,168	332,146	325,978
Year 24	6,168	332,146	325,978
Year 25	6,168	330,835	324,667
Year 26	6,168	327,081	320,913
Year 27	6,168	321,578	315,410
Year 28	6,168	318,568	312,400
Year 29	6,168	315,432	309,263
Year 30	6,168	311,447	305,279
Total	185,041	6,064,607	5,879,566
Total number of crediting years	30		
Annual average over the crediting period	6,168	202,154	195,986

SDG 8

Indicator	Total Project Value by 2036	Number of crediting years	Annual average over the crediting period (rounded)
Total number of jobs	144	30	5
Total number of employees earning above local minimum wage	107	30	4

SDG 15

Indicator	Total Project Value by 2036	Number of crediting years	Annual average over the crediting period
Total area of Trees Planted	14,464.8	30	482
Number of protected threatened species in the project area & conservation status of species	51	30	2
Total protected Land Area	7,487	30	249

B.7. Monitoring plan

B.7.1 Data and parameters to be monitored

Parameters monitored for SDGs 8 and 15 were updated at design certification renewal in 2023 as the existing tables did not correspond with the SDGs selected in Section B.6.

SDG 13

Data / Parameter	Productive area
Unit	Hectares (ha)
Description	The productive area is considered as the eligible area where tree planting (or related actions) activities take place and that meets the applicability conditions of the applied Gold Standard Methodology.
Source of data	- Inverbosques and Aldea Forestal information on productive area boundaries.
Value(s) applied	Updated in every performance review event
Measurement methods and procedures	Remote sensing tools to trace project productive area and planted areas.
Monitoring frequency	At each performance certification event
QA/QC procedures	Remote sensing tools are used to trace the project's productive area.
Purpose of data	Report on SDG 13
Additional comment	This parameter is monitored because it represents the eligible area where afforestation can take place.

Data / Parameter	Height
Unit	Meter

Description	The height will be used to calculate tCO ₂ sequestration in the planted areas.
Source of data	Field measurements: Forest Inventory
Value(s) applied	Updated in every performance review event
Measurement methods and procedures	<p>A sampling approach is designed and conducted by experts to measure tree’s allometric variables. Sample plots are measurement units were variables, such as height are registered.</p> <p>The amount of sample plots, their shape and location are determined per project participant depending on the characteristics and variability in planted areas.</p>
Monitoring frequency	At each performance certification event
QA/QC procedures	External foresters are hired to conduct forest inventories to monitor forest plantations growth.
Purpose of data	Report in SDG 13
Additional comment	See Section B.6.1. for further details on monitoring approaches.

Data / Parameter	DBH
Unit	cm
Description	The DBH is used to calculate tCO ₂ sequestration in planted areas
Source of data	Field measurements: Forest Inventory
Value(s) applied	Updated in every performance review event
Measurement methods and procedures	<p>A sampling approach is designed and conducted by experts to measure tree’s allometric variables. Sample plots are measurement units were variables, such as Diameter at Breast Height (DBH) are measured.</p> <p>The amount of sample plots, their shape and location are determined per project participant depending on the characteristics and variability in planted areas.</p>
Monitoring frequency	At each performance certification event
QA/QC procedures	External foresters are hired to conduct forest inventories to monitor forest plantations growth.
Purpose of data	Report on SDG 13
Additional comment	See Section B.6.1. for further details on monitoring approaches.

Data / Parameter	Tree volume mean annual increment (MAI)
Unit	m ³ /ha/yr
Description	Mean Annual Volume Increment of project species on site
Source of data	MAI values are estimated based on DBH and H data and allometric volume equations. Allometric tree variables and equations are provided and measured by the project participants based on forest inventories. Aldea Forestal allometric equations were readjusted on the 2022 Forest Inventory, while Inverbosques allometric equations were fitted in 2019.
Value(s) applied	Updated in every performance review event
Measurement methods and procedures	Each project participant has allometric volume equations adjusted to the project planted areas. Age and volume per tree are used to estimate MAI, which is extrapolated, later, to plot and hectare level.
Monitoring frequency	At each performance certification
QA/QC procedures	External foresters are hired to conduct forest inventories to monitor forest plantations' growth.
Purpose of data	Report on SDG 13
Additional comment	See Section B.6.1. for further details on monitoring approaches. For more details on forest monitoring methodology see Support Info>Climate_SDG13

Data / Parameter	Aboveground tree biomass (AGB)
Unit	Tonnes of CO ₂ -equivalents/hectare (tCO ₂ e/ha)
Description	Aboveground tree biomass is calculated using the stem volume, the Biomass Expansion Factor (BEF), carbon fraction and C to CO ₂ factor.
Source of data	Forest inventories measurements of DBH and height. Allometric equation of height fitted to project plantations based on height measurements at each forest inventory. Allometric equations of volume per species adjusted to project areas and from literature. Wood density values per species were obtained from MINAM et al., 2021. https://biocarbono.org/wp-content/uploads/2022/12/Publicacion-GEI-31.10.22.pdf

Value(s) applied	Updated in every performance review event
Measurement methods and procedures	AGB is measured to estimate the project contribution to SDG 13. It results from multiplying BEF, wood density, volume per tree, carbon fraction, and a default value to convert C to CO ₂ e. The volume per tree is calculated based on allometric equations that depend on DBH and heights measurements. Values per tree are then extrapolated to plot and finally to hectares.
Monitoring frequency	At performance certification
QA/QC procedures	AGB values are compared to values available in literature and ex-ante estimates.
Purpose of data	Report on SDG 13
Additional comment	

Data / Parameter	Belowground tree biomass
Unit	Tonnes of CO ₂ -equivalents/hectare
Description	Below ground biomass is estimated based on the root to shoot ratio of trees with respect to aboveground biomass
Source of data	Aboveground biomass estimates Root to shoot ratios were obtained from IPCC
Value(s) applied	0.42
Measurement methods and procedures	- To estimate BGB, root biomass is assumed to correspond to a proportion of AGB. Such proportion is given by the root-to-shoot ratio,
Monitoring frequency	At each performance certification
QA/QC procedures	
Purpose of data	Report on SDG 13
Additional comment	

Data / Parameter	Other emissions
Unit	Tonnes of CO ₂ -equivalents/hectare(tCO ₂ /ha)
Description	Other emissions are those that result from the use of Nitrogenous fertilizers during project activities.

Source of data	Project participants provide information on fertilizers applied as part of the forest management plan.
Value(s) applied	Updated in every performance review event
Measurement methods and procedures	<p>Nitrogen content in Kg/ha is calculated based on each fertilizer content given in percentage. Then, such percentage is multiplied by the total kilograms of fertilizers applied per hectare to find Kg of N per hectare.</p> <p>The default value of 0.005 tCO₂ per kg of N was applied to the Carbon Model.</p>
Monitoring frequency	At each performance certification
QA/QC procedures	FSC standard certification principles and criteria.
Purpose of data	Report on SDG 13
Additional comment	Other emissions from certain land preparation techniques, from the use energy during project activities, and from nitrogen-fixing trees were not included since they are not related to project activities.

SDG 8

Data / Parameter	Total number of jobs
Unit	Number
Description	Refers to total jobs generated because of the project.
Source of data	Project activity
Value(s) applied	Updated in every performance review event
Measurement methods and procedures	<p>Head count.</p> <p>Use numbers as at the end of the reporting period, unless there has been a material change during the reporting period;"</p>
Monitoring frequency	Annual
QA/QC procedures	-
Purpose of data	Monitor Target 8.5
Additional comment	-

Data / Parameter	Total number of employees earning above local minimum wage
Unit	Number of employees
Description	Refers to the total number of employees earning above the local minimum wage The lowest wage permitted by law or by a special agreement (such as with a labor union).
Source of data	Project activity
Value(s) applied	Updated in every performance review event
Measurement methods and procedures	Head count Use the number as at the reporting period."
Monitoring frequency	Annual
QA/QC procedures	-
Purpose of data	Monitor Target 8.5
Additional comment	-

SDG 15

Data / Parameter	Total area of Trees Planted
Unit	Hectares (ha)
Description	Refers to area of land on which trees were planted during the reporting period.
Source of data	Project activity
Value(s) applied	Updated in every performance review event
Measurement methods and procedures	Measurement
Monitoring frequency	Annual
QA/QC procedures	-
Purpose of data	Monitor Target 15.2
Additional comment	-

Data / Parameter	Number of protected/threatened species in the project location according to the IUCN Red List
------------------	---

Unit	Number of species observed or presented in the project area (species richness)
Description	<p>Refers to number of threatened species present on land and conservation status of the species in reporting period.</p> <p>Threatened species are any species (including animals, plants, fungi, etc.) which are likely to become an endangered species within the foreseeable future throughout all or a significant portion of its range. The term threatened is an umbrella term for a group of categories that capture various levels of threat to the species, ranging from vulnerable species to endangered species to critically endangered species.</p> <p>Project can refer to the following sources for further guidance and for clarification on the classification definitions cited herein:</p> <p>International Union for the Conservation of Nature Convention on International Trade in Endangered Species of Wild Fauna and Flora</p>
Source of data	Project Activity (Species monitoring) Registry from the observation by the participatory monitoring and camera traps
Value(s) applied	Updated in every performance review event
Measurement methods and procedures	Observations by employees and forest trainers Registry of camera traps
Monitoring frequency	Annual.
QA/QC procedures	-
Purpose of data	Monitor Target 15.5
Additional comment	-

Data / Parameter	Total protected Land Area
Unit	<p>ha of functional ecosystem</p> <p>ha of enhanced or regenerated ecosystem</p>
Description	Refers to the total project area of land identified and marked as a protected area to enhance biological diversity. For example, the Gold Standard project is required to mark 10% of the project area as a protected area (LUF Activity Requirements).

Source of data	Project activity
Value(s) applied	Updated in every performance review event
Measurement methods and procedures	Measurement
Monitoring frequency	Annual
QA/QC procedures	-
Purpose of data	Monitor Target 15.5
Additional comment	-

B.7.2 Sampling plan

SDG 13

The sampling plan methodology follows the “Sourcebook for Land Use, Land-Use Change and Forestry Projects” by Pearson et al., 2005. It was implemented autonomously by each project participant²⁸ as summarized below.

Table 6. Summary of forest monitoring methodology per company

Step	Phase	Project participant	
1	Stratification	A stratum – or Modelling Unit- is defined as a coherent area of one planted species of the same planting year belonging to one company. Planted areas were stratified for both companies to cover trees growth variability based on company, establishment year and species. For instance, AF-Am-2009 means an Aldea Forestal stand of Acacia mangium and established in 2009.	
Step	Phase	Aldea Forestal	Inverbosques
2	Forest inventory design	Randomly stratified sampling	Randomly stratified sampling
3	Sampling size	Confidence level of 95%, statistical error equal or less than 10%, variability level,	Confidence level of 95%, statistical error equal or less than 10%, variability level,

		and effective area per stands are considered to determine sampling size. A total of 224 permanent plots are measured every monitoring.	and effective area per stands are considered to determine sampling size. Up to this PR, there are 935 permanent plots. As the project continues to scale up additional plots will be added to comply with the Gold Standard inventory guidelines.
4	Plot's location	Plots are permanent, the reason why they were randomly located once. When needed, additional plots are located randomly at each forest inventory.	Plots are permanent, the reason why they were systematically located once. When needed, additional plots are located at each forest inventory.
5	Plots shape and area	Circular plots of 500 m ² with a radius of 12.62 m	Circular plots of 400 m ² with a radius of 11.28 m.

6	Tree measurements	<p>All trees with a height equal or greater than 1.3 m are measured clockwise starting to the north, with the closest tree to the plot center. Qualitative and quantitative variables are measured. DBH is measured in cm for all trees with height equal or above 1.3 m, while heights are measured only for a subset of 16 trees per plot.</p>	<p>All trees with a height equal or greater than 1.3 m are measured clockwise starting to the north, with the closest tree to the plot center. Qualitative and quantitative variables are measured. DBH is measured in cm for all trees with height equal or above 1.3 m, while heights are measured only for a subset of trees equivalent to 20% or 25% of plot density. Regression models are used to estimate missing heights of non-measured trees.</p>
----------	--------------------------	--	---

SDG 15

Monitoring Indicator: Enhanced biodiversity – Number of protected threatened species in the project area & conservation status of species.

Approach

- *Inverbosques*

Biodiversity monitoring in the High Conservation Value Areas (HCV)

As part of the Forest Stewardship Council (FSC) certification and their strong commitment to biodiversity conservation, the project not only focuses on carbon sequestration through plantations but also ensures the protection of natural areas within its area of influence, identifying High Conservation Value areas, which provide various ecosystem services to local communities. These processes conserve and protect natural areas, enabling the provisioning, regulation, cultural, and support services that benefit different local communities.

Following the High Conservation Value good practice guide, the project identified within the management Units, 11 areas as High Conservation Values with 392.5 ha. These areas are part of the River Bitá influence area. The areas are:

Property	Total area (ha)	HCV (ha)
El Paraiso	1 208,1	76,9
La Esmeralda	1 293,4	11,6
La Ilusion	1 279,1	36,2
El Porvenir	1 286,3	36,9
Las Bonitas	1 185,0	6,7
Ojo de Agua	1 285,1	7,9
Los Capachos	634,0	19,7
Las Campanitas	438,21	16,5
Los Sabanales	2 170,9	90,0
La Ilusion II	2 815,1	74,7

Monitoring methods:

- **Camera traps:** Camera traps will be installed in the HCV (to be determined) to monitor wildlife activities and species richness. Bushnell Core Glow cameras will be used for the characterization; they were programmed to take a series of five (5) photographs and a fifteen (15) second video per event detection and were active 24 hours a day.

Each photograph and video provided the following capture information: date, time, moon phase and temperature. To avoid overestimation, a group of photographs of the same species every 24 h in the same camera was considered as an individual²⁹.

- **Management and implementation of participatory monitoring programs:** Participatory wildlife monitoring (with emphasis on medium and large mammals) will be carried out through citizen science exercises with strategies such as reporting sightings on digital platforms; as well as training members of local

communities and forestry company operators in the identification of mammal species through photo-trapping and community monitoring.

Forest fires control & prevention: a forest fire management plan is a comprehensive strategy aimed at preventing, controlling, and mitigating the impact of wildfires. It includes training and education on fire risks, implementing fire bans, and managing combustible materials to prevent fires. Preparedness involves creating firebreaks, training dedicated firefighting brigades equipped with high-tech equipment for early fire detection and firefighting (using early detection systems) and rapid response protocols.

Strategic alliances

The Vichada Reforestation project is fostering forest and species conservation in the buffer zone of the Bitá River RAMSAR site. They are working hand in hand with the OMACHA Foundation and together are supporting the creation and strengthening of the Biological Corridors for umbrella species such as Tapir (*Tapirus terrestris*), Jaguar (*Panthera onca*) and Puma (*Puma concolor*).

Additionally, as part of their commitment acquired in the "Agreement of Wills" for the development of sustainability and conservation actions within the watershed of the Bitá River Ramsar site, in alliance with the Omacha Foundation, the Vichada reforestation project supported the implementation of the strategy: "Management and implementation of participatory monitoring programs" executed in alliance with the Omacha Foundation.

eDNA sampling:

DNA-based biodiversity monitoring technology provides big data, delivering quality results in a cost-effective, objective and repeatable manner. The Vichada Climate Reforestation Project is seeking to monitor biodiversity at scale and is looking for options for cost-effective, scalable methods and would like to understand how eDNA can help with the MRV for biodiversity for future income streams focused on nature recovery. For this reason, the project tested the products and services of NatureMetrics that using soil samples to identify many distinct taxa without increasing field sampling effort relative to conventional techniques.

The monitoring of soil biodiversity using eDNA methods will contribute to an understanding of the effect of the proposed silvicultural regime (from degraded land to Eucalyptus plantation to semi- natural forest via ANR) on soil biodiversity.

Specific monitoring objectives for this pilot project:

- 1) Establishing a soil biodiversity baseline on degraded land destined for afforestation
- 2) Characterize soil biodiversity in land areas representing different further forest succession stages (intermediate and mature) for benchmarking and to understand the changes in soil biodiversity that can be expected during the succession phases of eucalyptus forest in the area
- 3) Devising a monitoring approach that is consistent and repeatable to allow a multi-year analysis of restoration progress between the different planting types and with respect to reference high-quality habitats in the vicinity of the project area.
- 4) Understand biodiversity for future land management decision-making and access to environmental markets.

Three essays can be undertaken on each sample, each one covering particular soil c

Soil samples for soil biodiversity characterization will be taken from 3 main strata:

1. Degraded land destined for afforestation (the baseline)
2. Eucalyptus plantation
3. Acacia Plantation
4. Areas with Petroferric gravel
5. Planted area
6. Forest (high conservation values)

This approach will enable vital comparisons between degraded, restored, and target ecosystems. The eDNA team will provide easy-to-use eDNA sampling kits and train local teams, ensuring efficient and standardized data collection across the expansive project area.

- *Aldea Forestal*

The establishment of camera traps is envisioned but currently not executed. For the time being, animal sightings by field workers are registered to monitor the presence of threatened species. A photo competition among the workers was started to encourage the attention of rare species³⁰.

Note that all other SDG indicators are measured for the entire project, and not estimated by a sampling approach.

B.7.3 Other elements of monitoring plan

Field Measurements

The following equipment is needed to carry out the forest inventory:

- Compass (this may not be necessary if using GPS)
- Geographic Positioning System (GPS)
- Maps of plots to be measured
- Fiberglass meter tape (100 m and 30 m)
- Tree measuring tape
- PVC tube or pole with 2.5 m painted in 10 cm long bands for height determination
- Metal poles
- Clinometer for tree height and land slope
- Chalk or spray to mark trees after measuring
- Camera
- Data collection forms
- Permanent markers and/or pens

SECTION C. DURATION AND CREDITING PERIOD

C.1. Duration of project

C.1.1 Start date of project

02/02/2006

The project is retroactive since its first certification. As per the Land-use & Forest Activity Requirements rules, the project start date for the project corresponds to the planting of trees in La Paz areas.

C.1.2 Expected operational lifetime of project

The project is set up as a sustainable conservation forestry project. The operation timeline estimated for both project participants is 50 years. The project participants will continue their forestry activities in the project region beyond the crediting period. After the crediting period, the project participants expects that there is a natural and/or assisted succession to a forest with native species. Both project participants are continuously seeking for innovative business models beyond the 50-year commitment to mitigate any reversal risk.

C.2. Crediting period of project

C.2.1 Start date of crediting period

02/02/2006

C.2.2 Total length of crediting period

30 years

SECTION D. SUMMARY OF SAFEGUARDING PRINCIPLES AND GENDER SENSITIVE ASSESSMENT

D.1 Safeguarding Principles that will be monitored

A completed Safeguarding Principles Assessment is in [Appendix 1](#), ongoing monitoring is summarised below.

PRINCIPLES	MITIGATION MEASURES ADDED TO THE MONITORING PLAN
2.2 Gender equality	Documentation of contracts and monitoring of salary payments. See SDG 8.
3. Community Health, Safety and Working Conditions	Health and safety policies and trainings on these topics.
6.1.3 Labour rights	Documentation of contracts; see SDG 8
6.1.5 Labour rights	Documentation of workers’ safety workshops; see SDG 8

7.2 Energy supply	Ongoing capacity building for sustainable energy use and stakeholder consultations in the frame of FSC certification.
8.1 Impact on Natural Water Patterns/Flows	Monitoring of water consumption and existence of sustainable consumption policies
8.2 Erosion and/or Water Body Instability	Forest Management plans and certified compliance with them (FSC)
9.1 Landscape Modification and soil	Forest Management plans and certified compliance with them (FSC)
9.4 Release of pollutants	Forest Management plans and certified compliance with them (FSC) - Additional information under Principle 9.5 and 9.6
9.5 Hazardous and Non-hazardous Waste	Forest Management plans and certified compliance with them (FSC) Monitoring of waste disposal and capacity building
9.6 Pesticides and Fertilizers	Forest Management plans and certified compliance with them (FSC) Special capacity building related to and monitoring of agro-chemical use
9.11 Endangered Species	Forest Management plans and certified compliance with them (FSC) Additional biodiversity monitoring in the frame of SDG 15 and capacity building for Flora and Fauna Management

D.2. Assessment that project complies with GS4GG Gender Sensitive requirements

Question 1 - Explain how the project reflects the key issues and requirements of Gender Sensitive design and implementation as outlined in the Gender Policy?

Women and men have equal access and rights in the project. Marital status is not relevant for employment and the salary is only depending on the respective role and experience.
Women take over leading roles in the project.
The number of field workers that are male is clearly higher than female due to the physical work, but on the other

hand, more women are employed in the administrative entities.

<p>Question 2 - Explain how the project aligns with existing country policies, strategies and best practices</p>	<p>As described in the Transition Annex, the project was aligned with the 2018-2022 National Development Plan (NDP). The new NDP for 2022-2026 is still in the adoption process but a draft is available¹⁷. Similarly, to the former plan, it includes a commitment to strengthening government institutions that have specific mandates to address gender equality. This includes supporting the gender-sensitive design of public policies and budgets at the national and subnational levels. The main pillars of the agenda include: increasing the educational and economic empowerment of women to eliminate gaps in labour markets; the political empowerment of women; the promotion of women’s welfare and health (especially with regards to their sexual and reproductive rights); the promotion of the right to a life free of violence; the recognition of rural women as pillars of development; and, gender equity for peace building.</p>
<p>Question 3 - Is an Expert required for the Gender Safeguarding Principles & Requirements?</p>	<p>No. Gender equality is not an issue in the project. Additionally, FSC certification also requires compliance with these principles.</p>
<p>Question 4 - Is an Expert required to assist with Gender issues at the Stakeholder Consultation?</p>	<p>No, there is and were never issues with women’s participation in stakeholder consultations. Additionally, FSC certification also requires compliance with these principles.</p>

SECTION E. SUMMARY OF LOCAL STAKEHOLDER CONSULTATION

The below is a summary of the 2 step GS4GG Consultation for monitoring purposes.

A Stakeholder consultation based on the A/R Requirements V 0.9 was conducted for the project Design Certification in 2015³¹. Furthermore, the project undergoes annual audits by FSC, which ensures continuous consultation and active participation of local stakeholders³².

E.1 Summary of stakeholder mitigation measures

>>

The main outcomes of the initial stakeholder consultation in 2015 are summarized in the Table below.

Stakeholder comment	Was comment taken into account (Yes/ No)?	Explanation (Why? How?)
Local Participation: local population would like to be part of the monitoring (SMP).	Yes	Some employees from the project region work directly in project implementation and solutions regarding SMP. Some of the activities they worked on are related to forest monitoring.
Consider laws and regulations.	Yes	The project has all the necessary documentation according to the regulations for forestry operation. When there is a change in policy and regulations, the project participants will take action to keep the documentation up-to-date and start the corresponding procedures. Supporting documentation per project participants is presented to the VVB. Further, project participants' documentation will be reviewed every year in the annual monitoring report.
Cooperation with specialists: stakeholders believe that the project should make alliances with specialists for monitoring biodiversity.	Yes	The project is already part of an important national initiative and is cooperating with an important biodiversity initiative.

E.2 Final continuous input / grievance mechanism

METHOD	INCLUDE ALL DETAILS OF CHOSEN METHOD (S) SO THAT THEY MAY BE UNDERSTOOD AND, WHERE RELEVANT, USED BY READERS.
Aldea Forestal:	A physical mailbox installed on the plantation. It is accessible for both workers and community members and provides an option for

Grievance box ("Buzón PQR")	anonymous feedback and questions. It is checked monthly and the process for following up on the input is described in the communication guidelines. ³³
-----------------------------	---

Inverbosques : Suggestion box ("Buzón de sugerencias")	A physical mailbox was installed on the plantation for anonymous feedback and questions. It is checked every two months ³⁴ .
--	---

Inverbosques : Offer for direct communication	In addition to the box, a landline and an email address are dedicated for feedback and questions via direct communication. The number is +57 (4) 322 1348 and the email info@inverbosques.com ³⁵ .
---	--

GS Contact (mandatory)	help@goldstandard.org
------------------------	--

Other	-
-------	---

APPENDIX 1 - SAFEGUARDING PRINCIPLES ASSESSMENT

Complete the Assessment below and copy all Mitigation Measures for each Principle into [SECTION D](#) above. Please refer to the instructions in the [Guide to Completing](#) this Form.

SOCIAL SAFEGUARDING PRINCIPLES		
Reference requirement	Question	Response
P.1 Human Rights		
P.1.1.1 	Does the project developer, its representatives and the Project disrespect internationally proclaimed human rights?	<input type="checkbox"/> YES <input checked="" type="checkbox"/> NO
P.1.1.1 	Is the project involved or complicit in violence or human rights abuses of any kind as defined in the Universal Declaration of Human Rights?	<input type="checkbox"/> YES <input checked="" type="checkbox"/> NO
P.1.1.2 	Have local communities or individuals raised human rights concerns regarding the project (e.g., during the stakeholder engagement process, grievance processes, public statements)?	<input type="checkbox"/> YES <input checked="" type="checkbox"/> NO
P.1.1.3 	Is there a risk that rights-holders (e.g., Project-affected stakeholders) do not have the capacity to claim their rights?	<input type="checkbox"/> YES <input checked="" type="checkbox"/> NO
P.1.1.3 	Does this project undermine national or regional measures for the realisation of the right to development?	<input type="checkbox"/> YES <input checked="" type="checkbox"/> NO
<p>If the answer to any of the questions above is "yes," please explain the reason and how the project will ensure compliance with applicable requirements.</p> <p>Please add text here...</p>		
<p>Would the project potentially involve or lead to:</p>		
P.1.1.1 	adverse impacts on enjoyment of the human rights (civil, political, economic, social or cultural) of the affected population and particularly of marginalised groups?	<input type="checkbox"/> YES <input type="checkbox"/> POTENTIALLY <input checked="" type="checkbox"/> NO
P.1.1.2 	inequitable or discriminatory impacts on affected populations, particularly people living in poverty or marginalised or excluded individuals or groups, including persons with disabilities?	<input type="checkbox"/> YES <input type="checkbox"/> POTENTIALLY <input checked="" type="checkbox"/> NO
P.1.1.3 	restrictions in availability, quality of and/or access to resources or basic services, in particular to marginalised individuals or groups, including persons with disabilities?	<input type="checkbox"/> YES <input type="checkbox"/> POTENTIALLY <input checked="" type="checkbox"/> NO

P.1.1.3	exacerbation of conflicts among and/or the risk of violence to project-affected communities and individuals?	<input type="checkbox"/> YES <input type="checkbox"/> POTENTIALLY <input checked="" type="checkbox"/> NO
---------	--	--

Briefly describe below how the project incorporates a human rights-based approach.

For example, by describing how the project design:

- is informed by human rights analysis, including from UN human rights mechanisms (human rights treaty bodies, universal periodic review, special procedures)
- includes measures to assist the government to realise (respect, protect and fulfil) human rights under international law and to implement human rights-related standards in national law (whichever is higher)
- enhances the availability, accessibility and quality of benefits and services for potentially marginalised individuals and groups, and to increase their inclusion in decision-making processes that may impact them (consistent with the non-discrimination and equality human rights principle)
- provides reasonable accommodations to strengthen inclusivity and accessibility of project benefits and services to persons with disabilities.

During the construction and operation of the project, the project proponent respected and respected all human rights. The project is not in any kind of conflict with the livelihood of local people.

P.2 | GENDER EQUALITY AND WOMEN'S EMPOWERMENT

P.2.1.1	Have women's groups/leaders raised gender equality concerns regarding the project, (e.g., during the stakeholder engagement process, grievance processes, public statements)?	<input type="checkbox"/> YES <input checked="" type="checkbox"/> NO
P.2.1.2	Does the project undermine the principles of non-discrimination, equal treatment, and equal pay for equal work?	<input type="checkbox"/> YES <input checked="" type="checkbox"/> NO
P.2.1.2	Does the project prevent men and women from having equal opportunities to participate in identified tasks and activities, whether through paid work, volunteer work, or community contributions, as appropriate?	<input type="checkbox"/> YES <input checked="" type="checkbox"/> NO
P.2.1.2	Does the project limit the participation of women or men based on pregnancy, maternity/paternity leave, or marital status?	<input type="checkbox"/> YES <input checked="" type="checkbox"/> NO
P.2.1.2	Is information about project objectives being communicated in a way that is inappropriate for the local context and not tailored to the methods of understanding of both women and men, which could hinder their participation?	<input type="checkbox"/> YES <input checked="" type="checkbox"/> NO
P.2.1.3	Has the project assessed gender risks without referencing the country's gender strategy or equivalent national commitment?	<input type="checkbox"/> YES <input checked="" type="checkbox"/> NO
P.2.1.4	Has expert stakeholder(s) been involved, and has their input been requested for the project design on gender equality and women's empowerment?	<input type="checkbox"/> YES <input checked="" type="checkbox"/> NO

If the answer to any of the questions above is "yes," please explain the reason and how the project will ensure compliance with applicable requirements.

NA

Would the project potentially involve or lead to:		
P.2.1.1 	adverse impacts on gender equality and/or the situation of women and girls?	<input type="checkbox"/> YES <input type="checkbox"/> POTENTIALLY <input checked="" type="checkbox"/> NO
P.2.1.1 	exacerbation of risks of gender-based violence? For example, through the influx of workers to a community, changes in community and household power dynamics, increased exposure to unsafe public places and/or transport, etc.	<input type="checkbox"/> YES <input type="checkbox"/> POTENTIALLY <input checked="" type="checkbox"/> NO
P.2.1.2 	reproducing discriminations against women based on gender, especially regarding participation in design and implementation or access to opportunities and benefits?	<input type="checkbox"/> YES <input type="checkbox"/> POTENTIALLY <input checked="" type="checkbox"/> NO
P.2.1.2 	limitations on women’s ability to use, develop and protect natural resources, taking into account different roles and positions of women and men in accessing environmental goods and services? For example, activities that could lead to natural resources degradation or depletion in communities who depend on these resources for their livelihoods and well-being.	<input type="checkbox"/> YES <input type="checkbox"/> POTENTIALLY <input checked="" type="checkbox"/> NO

Briefly describe below how the project is addressing any identified risk to gender equality and women’s empowerment.

All project participants have within their Management Plans a Gender Equality policy as a mechanism to promote equal opportunities for men and women in access to employment, working conditions, professional development, training, and participation in Decision-making processes within their organizations.

THERE IS NO PLACE FOR DISCRIMINATION AGAINST WOMEN IN THIS PROJECT. THE PROJECT DOES NOT POTENTIALLY REPRODUCE OR FURTHER DEEPEN DISCRIMINATION AGAINST WOMEN BASED ON GENDER.

P.3 | COMMUNITY HEALTH AND SAFETY

P.3.1.1 	Does the project involve potential risks to the health and safety of affected communities during its life cycle?	<input type="checkbox"/> YES <input checked="" type="checkbox"/> NO
P.3.1.2 	Does the project involve any potential risks to the workers' safety and health?	<input type="checkbox"/> YES <input checked="" type="checkbox"/> NO

If the answer to any of the questions above is "yes," please explain the reason and how the project will ensure compliance with applicable requirements.

The project complies with all relevant local and national laws. The Project does not threaten human health or the environment and does not adversely affect the health of the workers and the community.

Would the project potentially involve or lead to:

P.3.1.1 	construction and/or infrastructure development (e.g., roads, buildings, dams)?	<input checked="" type="checkbox"/> YES <input type="checkbox"/> NO
P.3.1.2 	air pollution, noise, vibration, traffic, injuries, physical hazards, poor surface water quality due to runoff, erosion, sanitation?	<input type="checkbox"/> YES <input type="checkbox"/> POTENTIALLY <input checked="" type="checkbox"/> NO
P.3.1.2 	harm or losses due to failure of structural elements of the project (e.g., collapse of buildings or infrastructure)?	<input type="checkbox"/> YES <input type="checkbox"/> POTENTIALLY <input checked="" type="checkbox"/> NO
P.3.1.2 	risks of water-borne or other vector-borne diseases (e.g., temporary breeding habitats), communicable and noncommunicable diseases, nutritional disorders, mental health?	<input type="checkbox"/> YES <input type="checkbox"/> POTENTIALLY <input checked="" type="checkbox"/> NO
P.3.1.2 	transport, storage, and use and/or disposal of hazardous or dangerous materials (e.g., explosives, fuel and other chemicals during construction and operation)?	<input type="checkbox"/> YES <input type="checkbox"/> POTENTIALLY <input checked="" type="checkbox"/> NO
P.3.1.2 	adverse impacts on ecosystems and ecosystem services relevant to communities' health (e.g., food, surface water purification, natural buffers from flooding)?	<input type="checkbox"/> YES <input type="checkbox"/> POTENTIALLY <input checked="" type="checkbox"/> NO

Briefly describe below how the project is addressing any identified risk related to community health and safety.

The project complies with FSC forest management certification adherent to the best practices on fertilizer management. Further, due to the remote location, the project established temporal roads for forest monitoring. Lastly, the project participants have all legal requirements up to date.

P.4 | CULTURAL HERITAGE, INDIGENOUS PEOPLE, DISPLACEMENT AND RESETTLEMENT

P.4.1 | Sites of Cultural and Historical Heritage

P.4.1.1 	Does the project involve altering, damaging, or removing sites, objects, or structures of significant cultural heritage?	<input type="checkbox"/> YES <input checked="" type="checkbox"/> NO
---------------------------	--	--

If the answer to question above is "yes," please explain the reason and how the project will ensure compliance with applicable requirements.

Please add text here...

Would the project potentially involve or lead to:

P.4.1.1 	activities adjacent to or within a cultural heritage site?	<input type="checkbox"/> YES <input type="checkbox"/> POTENTIALLY <input checked="" type="checkbox"/> NO
P.4.1.1 	significant excavations, demolitions, movement of earth, flooding or other environmental changes?	<input type="checkbox"/> YES <input type="checkbox"/> POTENTIALLY <input checked="" type="checkbox"/> NO

P.4.1.1 	alterations to landscapes and natural features with cultural significance?	<input type="checkbox"/> YES <input type="checkbox"/> POTENTIALLY <input checked="" type="checkbox"/> NO
P.4.1.1 	adverse impacts to sites, structures, or objects with historical, cultural, artistic, traditional or religious values or intangible forms of culture (e.g., knowledge, innovations, practices)? (Note: projects intended to protect and conserve Cultural Heritage may also have inadvertent adverse impacts)	<input type="checkbox"/> YES <input type="checkbox"/> POTENTIALLY <input checked="" type="checkbox"/> NO
P.4.1.2 	utilisation of tangible and/or intangible forms (e.g., practices, traditional knowledge) of Cultural Heritage for commercial or other purposes?	<input type="checkbox"/> YES <input type="checkbox"/> POTENTIALLY <input checked="" type="checkbox"/> NO
P.4.1.2 	If answer to question above is "YES" or "POTENTIALLY" - are the communities made aware of their right under the law, scope and nature of proposed development and its potential consequences?	<input type="checkbox"/> YES <input type="checkbox"/> NO <input checked="" type="checkbox"/> NA
P.4.1.3 	If answer to question above is "YES" - does the project provide equitable sharing of benefits from commercialisation of such knowledge, innovation, or practice, consistent with their customs and traditions?	<input type="checkbox"/> YES <input type="checkbox"/> NO <input checked="" type="checkbox"/> NA
P.4.1.4 	If answer to question above is "YES" - are opinions and recommendations of an Expert Stakeholder(s) not sought and demonstrated as being included in the project design?	<input type="checkbox"/> YES <input type="checkbox"/> NO <input checked="" type="checkbox"/> NA
P.4.1.4 	If answer to question above is "YES", has project design been changed, modified, updated considering opinions and recommendations of an Expert Stakeholder?	<input type="checkbox"/> YES <input type="checkbox"/> NO <input checked="" type="checkbox"/> NA

If the answer is "yes" or "potentially" to any of the above questions, please provide a brief description of the project situation below. Also, provide justification and/or evidence as necessary to demonstrate compliance with applicable requirements.

Please add text here....

[P.4.2 |Forced Eviction and Displacement](#)

P.4.2.1 	Does the project involve any risks related to involuntary relocation of people?	<input type="checkbox"/> YES <input checked="" type="checkbox"/> NO
---------------------------	---	--

If the answer to question above is "yes," please explain the reason and how the project will ensure compliance with applicable requirements.

The project complies with all relevant local and national laws. The Project does not threaten human health or the environment and does not adversely affect the health of the workers and the community any way.

Would the project potentially involve or lead to:

P.4.2.1 	risk of forced evictions or involuntary relocation of people?	<input type="checkbox"/> YES <input type="checkbox"/> POTENTIALLY <input checked="" type="checkbox"/> NO
---------------------------	---	--

P.4.2.2 	temporary or permanent and full or partial physical displacement (including people without legally recognisable claims to land)?	<input type="checkbox"/> YES <input type="checkbox"/> POTENTIALLY <input checked="" type="checkbox"/> NO
P.4.2.2 	economic displacement (e.g., loss of assets or access to resources due to land acquisition or access restrictions – even in the absence of physical relocation)?	<input type="checkbox"/> YES <input type="checkbox"/> POTENTIALLY <input checked="" type="checkbox"/> NO
P.4.2.2 	If answer to question above is “YES” or “POTENTIALLY”, <ul style="list-style-type: none"> - has the project developed Resettlement Action Plan or Livelihood Action Plan in consultation and agreement with affected individual, group or community? - has the project integrated Resettlement Action Plan or Livelihood Action Plan into the Project design? 	<input type="checkbox"/> YES <input type="checkbox"/> NO <input checked="" type="checkbox"/> NA
P.4.2.3 	If answer to question above is “YES” - are opinions and recommendations of an Expert Stakeholder(s) not sought and demonstrated as being included in the project design?	<input type="checkbox"/> YES <input type="checkbox"/> NO <input checked="" type="checkbox"/> NA
P.4.2.3 	If answer to question above is “YES”, have project design been changed, modified, updated considering opinions and recommendations of an Expert Stakeholder?	<input type="checkbox"/> YES <input type="checkbox"/> NO <input checked="" type="checkbox"/> NA

If the answer is "yes" or "potentially" to any of the above questions, please provide a brief description of the project situation below. Also, provide justification and/or evidence as necessary to demonstrate compliance with applicable requirements.

The Project Developers have also obtained all necessary land titles and legal documentation approval. The project is in private land and all necessary documentation about land tenure is available upon request.

[P.4.3 | LAND TENURE AND OTHER RIGHTS](#)

P.4.3.1 	Does the project involve any risks related to identifying and managing legitimate tenure rights that may be affected by the project?	<input type="checkbox"/> YES <input checked="" type="checkbox"/> NO
---------------------------	--	--

If the answer to question above is "yes," please explain the reason and how the project will ensure compliance with applicable requirements.

Please add text here...

Would the project potentially involve or lead to:

P.4.3.1 	impacts on or changes to land tenure arrangements and/or community-based property rights/customary rights to land, territories and/or resources?	<input type="checkbox"/> YES <input type="checkbox"/> POTENTIALLY <input checked="" type="checkbox"/> NO
P.4.3.1 	uncertainties with regards to land tenure, access rights, usage rights or land ownership? Examples include, but are not limited to water access rights, community-based property rights and customary rights.	<input type="checkbox"/> YES <input type="checkbox"/> POTENTIALLY <input checked="" type="checkbox"/> NO
P.4.3.2 	Changes in legal arrangements, if yes, are the changes done in line with relevant laws and regulations?	<input type="checkbox"/> YES <input checked="" type="checkbox"/> NO

		<input type="checkbox"/> NA
P.4.3.2 	Changes in legal arrangements, if yes, are these changes agree with free, prior and informed consent of the involved stakeholders?	<input type="checkbox"/> YES <input checked="" type="checkbox"/> NO <input type="checkbox"/> NA
P.4.3.3 	Does some other entity (other than the project developer) hold uncontested land title for the entire Project Boundary?	<input type="checkbox"/> YES <input checked="" type="checkbox"/> NO <input type="checkbox"/> NA
P.4.3.4 	Are opinions and recommendations of an Expert Stakeholder(s) not sought and demonstrated as being included in the project design?	<input type="checkbox"/> YES <input type="checkbox"/> NO <input checked="" type="checkbox"/> NA
P.4.3.4 	If answer to question above is "YES", have project design been changed, modified, updated considering opinions and recommendations of an Expert Stakeholder?	<input type="checkbox"/> YES <input type="checkbox"/> NO <input checked="" type="checkbox"/> NA
P.4.3.5 	Have project developer in consultation with stakeholders established a functioning mechanism to receive, process, resolve, communicate and record grievances?	<input checked="" type="checkbox"/> YES <input type="checkbox"/> NO <input type="checkbox"/> NA

If the answer is "yes" or "potentially" to any of the above questions, please provide a brief description of the project situation below. Also, provide justification and/or evidence as necessary to demonstrate compliance with applicable requirements.

The project does not require any change to land tenure arrangements on any rights. Project participants sign usufruct contracts with landowners to get rights over land and forest Plantations. In the case of Aldea Forestal, the owners of the properties are shareholders of the company who signed usufruct contracts with Aldea Forestal S.A., for the period that goes from 2008 to 2058. These contracts are legally registered in the Office of Registry and Public Instruments.

There are no uncertainties related to land tenure or other usage or access rights as the right of use is contracted and legally registered under the relevant authorities in the country.

[P.4.4 | INDIGENOUS PEOPLES](#)

P.4.4.1 	Does the project involve Indigenous People within the Project area of influence who may be affected directly or indirectly by the Project?	<input type="checkbox"/> YES <input checked="" type="checkbox"/> NO
---------------------------	--	--

If the answer to question above is "yes," please explain project situation and how the project will ensure compliance with applicable requirements.

Please add text here....

Would the project potentially involve or lead to:

P.4.4.1 	affect areas where indigenous peoples are present (including project area of influence)	<input type="checkbox"/> YES <input type="checkbox"/> POTENTIALLY <input checked="" type="checkbox"/> NO
P.4.4.1 	affect areas, land and territory claimed by indigenous peoples?	<input type="checkbox"/> YES <input type="checkbox"/> POTENTIALLY

		<input checked="" type="checkbox"/> NO
P.4.4.1	impacts (positive or negative) to the human rights, lands, natural resources, territories, and traditional livelihoods of indigenous peoples?	<input type="checkbox"/> YES <input type="checkbox"/> POTENTIALLY <input checked="" type="checkbox"/> NO
P.4.4.7	If answer to above questions is "YES" or "POTENTIALLY", <ul style="list-style-type: none"> - Is it determined that the proposed project may affect the rights, lands, resources, or territories of indigenous people? - Has an "Indigenous People Plan" (IPP) or "Indigenous People Plan Framework" been elaborated and included in the project documentation? - Was the plan developed in accordance with the effective and meaningful participation of indigenous peoples and in accordance with UNDP Guidelines? 	<input type="checkbox"/> YES <input type="checkbox"/> NO <input checked="" type="checkbox"/> NA
P.4.4.3	risk of forcibly removing indigenous people from their lands and territories?	<input type="checkbox"/> YES <input type="checkbox"/> POTENTIALLY <input checked="" type="checkbox"/> NO
P.4.4.4	utilisation and/or commercial development of natural resources on lands and territories claimed by indigenous peoples? Consider, and where appropriate ensure, consistency with the answers under Principle 4.1 above	<input type="checkbox"/> YES <input type="checkbox"/> POTENTIALLY <input checked="" type="checkbox"/> NO
P.4.4.5 P.4.4.6	If answer to question above is "YES" or "POTENTIALLY" <ul style="list-style-type: none"> - Did the project obtain free, prior and informed consent from indigenous people before taking their cultural, intellectual, religious, and/or spiritual property? - Does the project ensure that the indigenous people receive an equitable sharing of benefits resulting from the use of their traditional knowledge and practices? ? - Does the project ensure that the sharing of benefits resulting from the use of indigenous peoples' traditional knowledge and practices is culturally appropriate and inclusive? - Does the project ensure that the provision of equitable sharing of benefits does not impede land rights or equal access to basic services including health services, clean water, energy, education, safe and decent working conditions, and housing? 	<input type="checkbox"/> YES <input type="checkbox"/> NO <input checked="" type="checkbox"/> NA

P.4.4.8 	Does the project lack appropriate feedback and grievance channels for Indigenous Peoples and their representatives?	<input type="checkbox"/> YES <input checked="" type="checkbox"/> NO <input type="checkbox"/> NA
P.4.4.8 	Has a grievance mechanism not been established at the beginning of programme or project implementation with due consideration given to customary dispute settlement mechanisms among the Indigenous Peoples concerned and will it remain operational throughout the project cycle?	<input type="checkbox"/> YES <input type="checkbox"/> NO <input checked="" type="checkbox"/> NA
P.4.4.9 	Are opinions and recommendations of an Expert Stakeholder(s) not sought and demonstrated as being included in the project design?	<input type="checkbox"/> YES <input type="checkbox"/> NO <input checked="" type="checkbox"/> NA
P.4.4.9 	If answer to question above is "YES", have project design been changed, modified, updated considering opinions and recommendations of an Expert Stakeholder?	<input type="checkbox"/> YES <input type="checkbox"/> NO <input checked="" type="checkbox"/> NA

If the answer is "yes" or "potentially" to any of the above questions, please provide a brief description of the project situation below. Also, provide justification and/or evidence as necessary to demonstrate compliance with applicable requirements.

The project is not located on land/territory claimed by any indigenous peoples. Indigenous groups are located and continuously contacted to communicate projects activities and initiatives.

Good relationships are evidenced by the fact that complaints or conflicts have not arisen between project participants and surrounding indigenous communities, who are engaged annually in stakeholder consultations conducted on a mandatory basis as part of the FSC Certification.

[P.5 |CORRUPTION](#)

P.5.1.1 	Does the project involve, or is it complicit in, contributing to or reinforcing corruption or corrupt projects?	<input type="checkbox"/> YES <input checked="" type="checkbox"/> NO
P.5.1.1 	Does the project have a risk of encouraging bribery, kickbacks, or other unethical behavior?	<input type="checkbox"/> YES <input checked="" type="checkbox"/> NO

If the answer to any of the questions above is "yes," please explain project situation and how the project will ensure compliance with applicable requirements.

The proponent confirms that there is no corruption involved in the project activity. To ensure that, project participants implement anti-corruption policies which are also required for the FSC certification. The project abides by the United Nations Convention against Corruption. Colombia ratification was made the 27.10.06..

ECONOMIC SAFEGUARDING PRINCIPLES

[P.6 |ECONOMIC IMPACTS](#)

[P.6.1 |LABOUR RIGHTS AND WORKING CONDITIONS](#)

P.6.1.1 	Does the project involve, facilitate, or condone forced labor, or pose a potential risk of forced labor?	<input type="checkbox"/> YES <input checked="" type="checkbox"/> NO
P.6.1.1 	Does the project violate any labor or health and safety laws, international obligations, or ILO conventions?	<input type="checkbox"/> YES <input checked="" type="checkbox"/> NO
P.6.1.2 	Does the project violate the principles of equal opportunity and fair treatment in its employment decisions?	<input type="checkbox"/> YES <input checked="" type="checkbox"/> NO
P.6.1.3 	Does the project violate national laws, if available regarding non-discrimination in employment?	<input type="checkbox"/> YES <input checked="" type="checkbox"/> NO
P.6.1.4 P.6.1.5 	Does the project allow child labor?	<input type="checkbox"/> YES <input checked="" type="checkbox"/> NO
P.6.1.7 P.6.1.8 	Does the project have insufficient processes and measures in place to ensure the safety and health of project workers?	<input type="checkbox"/> YES <input checked="" type="checkbox"/> NO
P.6.1.9 	Does the project have insufficient measures to safeguard and support vulnerable project workers, such as women, people with disabilities, migrant workers, and young workers, and to prevent any kind of harassment, abuse, bullying, or exploitation, including gender-based violence (GBV)?	<input type="checkbox"/> YES <input checked="" type="checkbox"/> NO
P.6.1.10 	Does the project have no grievance mechanism available for workers to voice workplace concerns? Is information about this mechanism not provided to workers at the time of recruitment, or is it not easily accessible?	<input type="checkbox"/> YES <input checked="" type="checkbox"/> NO

If the answer to any of the questions above is "yes," please explain project situation and how the project will ensure compliance with applicable requirements.

Please add text here...

Would the project potentially involve or lead to:

(NOTE: APPLIES TO BOTH PROJECT AND CONTRACTOR WORKERS)

P.6.1.1 	use of forced labour?	<input type="checkbox"/> YES <input type="checkbox"/> POTENTIALLY <input checked="" type="checkbox"/> NO
P.6.1.1 	working conditions that do not meet national labour laws and international commitments?	<input type="checkbox"/> YES <input type="checkbox"/> POTENTIALLY <input checked="" type="checkbox"/> NO
P.6.1.1 	working conditions that may deny freedom of association and collective bargaining?	<input type="checkbox"/> YES <input type="checkbox"/> POTENTIALLY <input checked="" type="checkbox"/> NO
P.6.1.1 	absence of documented working agreements with all individual workers <i>if such agreements do not exist, or do not address working conditions and terms of employment, the project developer shall provide reasonable working conditions and terms of employment.</i>	<input type="checkbox"/> YES <input type="checkbox"/> POTENTIALLY <input checked="" type="checkbox"/> NO

P.6.1.1 	use of migrant workers? <i>if engaged, the developer shall ensure that they are engaged substantially equivalent terms and conditions to non-migrant workers carrying out similar work.</i>	<input type="checkbox"/> YES <input type="checkbox"/> POTENTIALLY <input checked="" type="checkbox"/> NO
P.6.1.1 	having no arrangements for basic services ⁴ for workers? <i>the project developer shall put in place and implement policies on the quality and management of the accommodation and provision of basic services in a manner consistent with the principles of non-discrimination and equal opportunity. Workers' accommodation arrangements should not restrict workers' freedom of movement or of association</i>	<input type="checkbox"/> YES <input type="checkbox"/> POTENTIALLY <input checked="" type="checkbox"/> NO
P.6.1.2 	any form of discrimination or harassment based on factors unrelated to job requirements, such as gender, race, nationality, ethnicity, social or indigenous origin, religion or belief, disability, age, or sexual orientation?	<input type="checkbox"/> YES <input type="checkbox"/> POTENTIALLY <input checked="" type="checkbox"/> NO
P.6.1.2 	any form of discrimination in any aspect of employment, such as recruitment, compensation, working conditions, training, job assignment, promotion, termination, or discipline?	<input type="checkbox"/> YES <input type="checkbox"/> POTENTIALLY <input checked="" type="checkbox"/> NO
P.6.1.2 	harassment, intimidation, and/or exploitation, especially in regard to women?	<input type="checkbox"/> YES <input type="checkbox"/> POTENTIALLY <input checked="" type="checkbox"/> NO
P.6.1.3 	discriminatory working conditions and/or lack of equal opportunity where national law provides provision to address non-discrimination in employment?	<input type="checkbox"/> YES <input type="checkbox"/> POTENTIALLY <input checked="" type="checkbox"/> NO
P.6.1.4 	use of child labour? (including third-party engaged workers)	<input type="checkbox"/> YES <input type="checkbox"/> POTENTIALLY <input checked="" type="checkbox"/> NO
P.6.1.4 	inadequate and verifiable mechanisms for age verification?	<input type="checkbox"/> YES <input checked="" type="checkbox"/> NO
P.6.1.7 	no processes and measures in place for the safety and health of project workers?	<input type="checkbox"/> YES <input checked="" type="checkbox"/> NO
P.6.1.7 	No provision of safety and health training provisions, including on the proper use and maintenance of personal protective equipment conducted by competent persons and the maintenance of training records?	<input type="checkbox"/> YES <input checked="" type="checkbox"/> NO

⁴ Basic services requirements refer to minimum space, supply of water, adequate sewage and garbage disposal system, appropriate protection against heat, cold, damp, noise, fire, and disease-carrying animals, adequate sanitary and washing facilities, ventilation, cooking and storage facilities and natural and artificial lighting, and in some cases basic medical services.

P.6.1.7 	No provision to record and document accidents, diseases, incidents, and any resulting injuries, illnesses, or deaths?	<input type="checkbox"/> YES <input checked="" type="checkbox"/> NO
P.6.1.8 	occupational health and safety risks due to physical, chemical, biological and psychosocial hazards (including violence and harassment) throughout the project life-cycle?	<input type="checkbox"/> YES <input checked="" type="checkbox"/> NO
P.6.1.9 	No measures to protect vulnerable project workers from harassment, exploitation, and gender-based violence (GBV)? This includes women, people with disabilities, migrant workers, and young workers.	<input type="checkbox"/> YES <input checked="" type="checkbox"/> NO
P.6.1.10 	No grievance mechanism available for workers to voice workplace concerns.	<input type="checkbox"/> YES <input checked="" type="checkbox"/> NO
P.6.1.11 	No measures for due diligence and the establishment of policies and procedures to manage and monitor the performance of third-party employees in the project?	<input type="checkbox"/> YES <input checked="" type="checkbox"/> NO

If the answer is "yes" or "potentially" to any of the above questions, please provide a brief description of the project situation below. Also, provide justification and/or evidence as necessary to demonstrate compliance with applicable requirements.

All workers have legal contracts and their respective social security identification. The Ministry of Work (Mintrabajo) is responsible for the compliance of these aspects. Child labour is strictly prohibited in the country as stated in the constitution and as ratified in the C onvention on the Rights of the Child (28.01.91). Workers receive annual training to guarantee quality and security during operation.

[P.6.2 |NEGATIVE ECONOMIC CONSEQUENCES](#)

P.6.2.1 	Is there a risk of project failure during implementation or after project certification due to a lack of financial resources?	<input type="checkbox"/> YES <input checked="" type="checkbox"/> NO
P.6.2.2 	Does the project have potential negative impacts or pose a risk to the local economy?	<input type="checkbox"/> YES <input checked="" type="checkbox"/> NO
P.6.2.2 	Are there any potential risks or negative impacts this project may have on vulnerable or marginalised social groups, despite the benefits it may bring?	<input type="checkbox"/> YES <input checked="" type="checkbox"/> NO

If the answer to any of the questions above is "yes," please explain project situation and how the project will ensure compliance with applicable requirements.

The financial sustainability of the project has been discussed in the registered PDD. The calculations are for the entire lifetime of the project. There are no negative economic impacts or potential risks to the local economy due to the project activities. Furthermore, the project integrates local workers and provides quality job opportunities.

Would the project involve or lead to:

P.6.2.2 	economic impacts (negative/detrimental) to the local economy?	<input type="checkbox"/> YES <input type="checkbox"/> POTENTIALLY <input checked="" type="checkbox"/> NO
---------------------------	---	--

P.6.2.2	negative economic consequences during and after project implementation, e.g., for vulnerable and marginalised social groups in targeted communities?	<input type="checkbox"/> YES <input type="checkbox"/> POTENTIALLY <input checked="" type="checkbox"/> NO
---------	--	--

If the answer is "yes" or "potentially" to any of the above questions, please provide a brief description of the project situation below. Also, provide justification and/or evidence as necessary to demonstrate compliance with applicable requirements.

Please add text here....

P.7 | CLIMATE AND ENERGY

P.7.1 | GHG EMISSIONS

P.7.1.1	Does the project have a risk of increasing greenhouse gas emissions over the Baseline Scenario?	<input checked="" type="checkbox"/> YES <input type="checkbox"/> NO
---------	---	--

If the answer to question above is "yes," please explain project situation and how the project will ensure compliance with applicable requirements.

The project leads to additional greenhouse gas emissions from land preparation, from fertilizer use and fossil fuel use for management practices. All emission sources at baseline are accounted for under section 3.8 Other Emissions of the Afforestation/reforestation (A/R) GHG emissions reduction & sequestration methodology V 2.0.

Would the project involve or lead to:

P.7.1.1	increase greenhouse gas emissions over the Baseline Scenario?	<input type="checkbox"/> YES <input checked="" type="checkbox"/> POTENTIALLY <input type="checkbox"/> NO
---------	---	--

If the answer is "yes" or "potentially" to the above question, please provide a brief description of the project situation below. Also, provide justification and/or evidence as necessary to demonstrate compliance with applicable requirements.

See above

P.7.2 | ENERGY SUPPLY

P.7.2.1	Does the project pose a risk to the availability and reliability of energy supply to other users?	<input type="checkbox"/> YES <input checked="" type="checkbox"/> NO
---------	---	--

If the answer to question above is "yes," please explain project situation and how the project will ensure compliance with applicable requirements.

The project has its own solar energy supply.

Would the project involve or lead to:

P.7.2.1 	negative impact on the availability and reliability of energy supply to other users?	<input type="checkbox"/> YES <input type="checkbox"/> POTENTIALLY <input checked="" type="checkbox"/> NO
---------------------------	--	--

If the answer is "yes" or "potentially" to the above question, please provide a brief description of the project situation below. Also, provide justification and/or evidence as necessary to demonstrate compliance with applicable requirements.

The project has its own solar energy supply.

P.8 | WATER

P.8.1 | IMPACT ON NATURAL WATER PATTERNS/FLOWS

P.8.1.1 	Does the project increase water usage to a level that will not allow for the maintenance of environmental flows?	<input type="checkbox"/> YES <input checked="" type="checkbox"/> NO
P.8.1.1 	Does the project result in the discharge of wastewater that does not meet the required standard for beneficial reuse and could therefore negatively impact the environmental flow?	<input type="checkbox"/> YES <input checked="" type="checkbox"/> NO
P.8.1.1 	Does the project have the potential risk to exceed the rate of recharge for the groundwater source?	<input type="checkbox"/> YES <input checked="" type="checkbox"/> NO
P.8.1.1 	Does the project involve any processes or activities that could contaminate the groundwater and render it unsuitable for use?	<input type="checkbox"/> YES <input checked="" type="checkbox"/> NO

If the answer to any of the questions above is "yes," please explain project situation and how the project will ensure compliance with applicable requirements.

Please add text here....

Would the project involve or lead to:

P.8.1.1 	affect the natural or pre-existing pattern of watercourses, groundwater and/or the watershed(s) such as high seasonal flow variability, flooding potential, lack of aquatic connectivity or water scarcity?	<input type="checkbox"/> YES <input checked="" type="checkbox"/> POTENTIALLY <input type="checkbox"/> NO
P.8.1.1 	Wastewater discharge of quality that does not meet the required standard for beneficial reuse?	<input type="checkbox"/> YES <input type="checkbox"/> POTENTIALLY <input checked="" type="checkbox"/> NO
P.8.1.1 	significant extraction, diversion of ground water? For example, construction of dams, reservoirs, river basin developments, groundwater extraction	<input type="checkbox"/> YES <input type="checkbox"/> POTENTIALLY <input checked="" type="checkbox"/> NO
P.8.1.2 	Are opinions and recommendations of an Expert Stakeholder(s) not sought and demonstrated as being included in the project design?	<input type="checkbox"/> YES <input type="checkbox"/> NO <input checked="" type="checkbox"/> NA

If the answer is "yes" or "potentially" to any of the above questions, please provide a brief description of the project situation below. Also, provide justification and/or evidence as necessary to demonstrate compliance with applicable requirements.

All water resources are conserved, protected and mapped. The project uses ground-water in a natural way (root system of the mixed plantations) but does not affect negative natural or preexisting pattern of watercourses, groundwater and/or watersheds. The Corporación Autónoma Regional de la Orinoquía, Corporinoquia, adopted the Environmental Management Plan of one of the project participants with the resolution 800.41.11.019 of October 14, 2011, and it is in Force. Capacity building about rational and efficient usage of water and wastewater as part of the Environmental Management is also executed. Project locations areas were assessed using the Aqueduct 3.0 Country Rankings datasets to examine the water stress or scarcity as suggested by the standard. At the country level, Colombia is ranked in position 118. Here, water stress scores ranked from 1 (highest water stress score) to 165 (lowest water stress score). The analysis also shows the baseline water stress that measures the ratio of total water withdrawals to available renewable surface and groundwater supplies. Vichada department is categorized as Low (<10%).

P.8.2 | EROSION AND/OR WATER BODY INSTABILITY

P.8.2.1 	Does the project have a risk of negatively impacting the catchment and has it been assessed and addressed?	<input type="checkbox"/> YES <input checked="" type="checkbox"/> NO
---------------------------	--	--

If the answer to question above is "yes," please explain project situation and how the project will ensure compliance with applicable requirements.

Please add text here...

Would the project involve or lead to:

P.8.2.2 	negatively impact on the catchment area?	
P.8.2.5 	<p><i>If yes, Erosion prevention measures, including soil and slope protection measures, must be implemented before project commencement. These measures should involve natural terracing, infiltration strips, permanent ground cover, hedge and tree rows, and effective slope length assessment. Regular reassessment of these measures is necessary.</i></p>	<input type="checkbox"/> YES <input type="checkbox"/> POTENTIALLY <input checked="" type="checkbox"/> NO
P.8.2.6 	Are opinions and recommendations of an Expert Stakeholder(s) not sought and demonstrated as being included in the project design?	<input type="checkbox"/> YES <input type="checkbox"/> NO <input checked="" type="checkbox"/> NA

If the answer is "yes" or "potentially" to any of the above questions, please provide a brief description of the project situation below. Also, provide justification and/or evidence as necessary to demonstrate compliance with applicable requirements.

Please add text here...

P.9 | ENVIRONMENT, ECOLOGY AND LAND USE

P.9.1 | LANDSCAPE MODIFICATION AND SOIL

<p>P.9.1.1 -</p>	<p>Is there any risk of soil resource degradation or loss of ecosystem services provided by soils in the project?</p>	
<p>P.9.1.3 </p>	<p><i>If yes, the project shall maintain healthy soils by minimising negative impacts on soil health, productivity, structure, and water retention. Steps to minimise soil degradation include crop rotation, composting, using N-fixing plants, and reducing tillage and ecologically harmful substances.</i></p>	<p><input type="checkbox"/> YES <input type="checkbox"/> NO</p>

If the answer to question above is "yes," please explain project situation and how the project will ensure compliance with applicable requirements.

The project through afforestation with FSC certification schemes promotes biodiversity. The long-term goal is to prepare the soil for the growth of forest plantation that support landscape connectivity and forest cover. Soil analysis has been implemented to have a better understanding of the relationship between climatic seasonality, landscape characteristics and intrinsic physicochemical soil properties/features. Monitoring plans are also present to manage soil quality changes and identify erosive and instability processes. Capacity building programs exist to address soil compaction and erosion prevention. Further, FSC certificate guarantees that good and better silvicultural practices are implemented in the forest plantations following the Conservation agreements with Foresters and local partners signed for the designation of the Ramsar site. As mentioned by Suarez et al. (2021), these agreements ensure that the forest partners apply and implement good practices for forestry production through actions such as the control and management of herbicides and agro-inputs, the control of exotic species in native forests, the implementation of environmental management plans, the prevention of fire management and training in conservation and management issues. It is worth noting that these conservation areas have the role of Habitat Corridors. These corridors ensure the species' habitat connectivity within the MU and the wider landscape. The survival of many species will depend on the availability of suitable habitats both in the MU and the wider landscape, especially for wide-ranging and large-bodied species (HCV guidance).

Would the project involve or lead to:

<p>P.9.1.4 </p>	<p>production, harvesting, and/or management of living natural resources by small-scale landholders and/or local communities?</p>	<p><input type="checkbox"/> YES <input type="checkbox"/> POTENTIALLY <input checked="" type="checkbox"/> NO</p>
<p>P.9.1.4 </p>	<p>if answer to above question "yes" or "potentially", does project adopt appropriate and culturally sensitive sustainable resource management practices?</p>	<p><input type="checkbox"/> YES <input type="checkbox"/> NO <input checked="" type="checkbox"/> NA</p>

If the answer is "yes" or "potentially" to any of the above questions, please provide a brief description of the project situation below. Also, provide justification and/or evidence as necessary to demonstrate compliance with applicable requirements.

Please add text here....

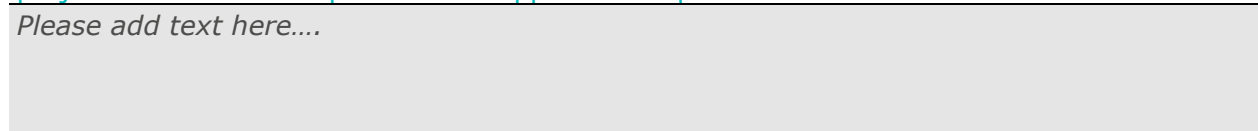


P.9.2 | VULNERABILITY TO NATURAL DISASTER

P.9.2.1 	Does the project have any risks associated with natural or man-made hazards that could result from land use changes due to the project?	<input type="checkbox"/> YES <input checked="" type="checkbox"/> NO
---------------------------	---	--

If the answer to question above is "yes," please explain project situation and how the project will ensure compliance with applicable requirements.

Please add text here...

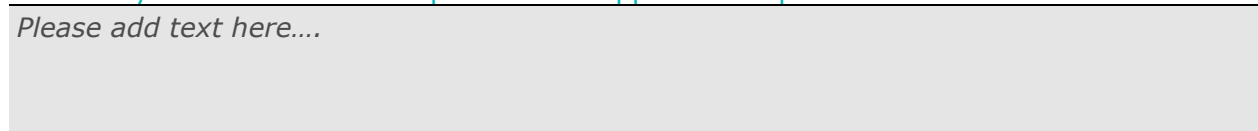


Would the project involve or lead to:

P.9.2.2 	any potential risks that require emergency preparedness and response planning?	<input type="checkbox"/> YES <input type="checkbox"/> POTENTIALLY <input checked="" type="checkbox"/> NO
P.9.2.2 	if answer to above question "yes" or "potentially", did the project developer disclose appropriate information about emergency preparedness and response to affected communities?	<input type="checkbox"/> YES <input checked="" type="checkbox"/> NO <input type="checkbox"/> NA

If the answer is "yes" or "potentially" to any of the above questions, please provide a brief description of the project situation below. Also, provide justification and/or evidence as necessary to demonstrate compliance with applicable requirements.

Please add text here...



P.9.3 | BIOSAFETY AND GENETIC RESOURCES

P.9.3.1 	Does the project involve the transfer, handling, and use of genetically modified organisms/living modified organisms that may result in adverse effects on biological diversity?	<input type="checkbox"/> YES <input checked="" type="checkbox"/> NO
---------------------------	--	--

If the answer to question above is "yes," please explain project situation and how the project will ensure compliance with applicable requirements.

Please add text here...



Would the project involve or lead to:

P.9.3.1 	the transfer, handling and use of genetically modified organisms/living modified organisms (GMOs/LMOs) that result from modern biotechnology	<input type="checkbox"/> YES <input type="checkbox"/> POTENTIALLY <input checked="" type="checkbox"/> NO
P.9.3.1 	If answer to above question is "yes" has a risk assessment by a competent Expert stakeholder been carried out in accordance with Annex iii of the Cartagena protocol on biosafety to the convention on biological diversity?	<input type="checkbox"/> YES <input checked="" type="checkbox"/> NO <input type="checkbox"/> NA
P.9.3.2 	If answer to above question is "yes" has any risks identified in the risk assessment?	<input type="checkbox"/> YES

		<input type="checkbox"/> NO <input checked="" type="checkbox"/> NA
P.9.3.3 	Forestry (for example Afforestation/Reforestation) involving GMO planting? <i>Note - Forestry projects (for example Afforestation/Reforestation) involving GMO planting are not eligible for Certification under Gold Standard for the Global Goals.</i>	<input type="checkbox"/> YES <input checked="" type="checkbox"/> NO <input type="checkbox"/> NA

If the answer is "yes" or "potentially" to any of the above questions, please provide a brief description of the project situation below. Also, provide justification and/or evidence as necessary to demonstrate compliance with applicable requirements.

Please add text here...

[P.9.4 | RELEASE OF POLLUTANTS](#)

P.9.4.1 	Does the project have a risk of releasing pollutants to air, water, and land in routine, non-routine, or accidental circumstances?	<input type="checkbox"/> YES <input checked="" type="checkbox"/> NO
---------------------------	--	--

If the answer to question above is "yes," please explain project situation and how the project will ensure compliance with applicable requirements.

FSC certification within its principles and criteria describes environmental measures taken and implemented by project participants. A weather station was installed by AF. It has already generated the first weather data, in the upper part of the Bitá River Basin. This information is being processed and it is a contribution to the region, in agreement with the foundation La Palmita of the Casanare Department. A hydrological station has also been installed inside the Bitá River, which will be monitored in the summer, to extract the information, process it, and put it at the service of the region. Management plans within their mitigation actions and monitoring structure have as objectives:

- Prevent surface and groundwater pollution by implementing a wastewater management and treatment system.
- Minimize the risks of contamination, caused by the use of chemical inputs and fuels

Would the project involve or lead to:

P.9.4.1 	any potential risk of pollutant release that cannot be avoided?	<input type="checkbox"/> YES <input checked="" type="checkbox"/> POTENTIALLY <input type="checkbox"/> NO
P.9.4.3 	If answer to above question is "Yes" or "potentially", has the project identified all potential pollution sources that may degrade the quality of soil, air, surface, and groundwater in the project area?	<input checked="" type="checkbox"/> YES <input type="checkbox"/> NO <input type="checkbox"/> NA
P.9.4.2 	If answer to above question is "Yes" or "potentially", do the pollution prevention and control technologies and practices applied during the project life cycle align with national regulations or international best practices?	<input checked="" type="checkbox"/> YES <input type="checkbox"/> NO <input type="checkbox"/> NA

P.9.4.3 	If answer to above question is "Yes", is there a monitoring plan to ensure that mitigation measures are implemented, and resources are protected?	<input checked="" type="checkbox"/> YES <input type="checkbox"/> NO <input type="checkbox"/> NA
---------------------------	---	---

If the answer is "yes" or "potentially" to any of the above questions, please provide a brief description of the project situation below. Also, provide justification and/or evidence as necessary to demonstrate compliance with applicable requirements.

Standard procedure is followed at the site during operation and maintenance reflected in their management plants, as well as FSC guidelines and regulations. Capacity building for all companies addresses hazardous and non-hazardous chemicals and/or materials within their project activities.

[P.9.5 | HAZARDOUS AND NON-HAZARDOUS WASTE](#)

P.9.5.1 	Does the project involve the generation of waste materials (both hazardous and non-hazardous)?	<input checked="" type="checkbox"/> YES <input type="checkbox"/> NO
P.9.5.3 	Does the project involve risk of release of hazardous materials resulting from their production, transportation, handling, storage, or use?	<input checked="" type="checkbox"/> YES <input type="checkbox"/> NO
P.9.5.5 	Does the project involve the use of any chemicals or materials subject to international bans or phase-outs?	<input type="checkbox"/> YES <input checked="" type="checkbox"/> NO

If the answer to any of the questions above is "yes," please explain project situation and how the project will ensure compliance with applicable requirements.

Standard procedure is followed at the site during operation and maintenance reflected in their management plants, as well as FSC guidelines and regulations. Capacity building for all companies addresses hazardous and non-hazardous chemicals and/or materials within their project activities.

Would the project involve or lead to:

P.9.5.1 	the generation and management of waste materials?	<input type="checkbox"/> YES <input checked="" type="checkbox"/> POTENTIALLY <input type="checkbox"/> NO
P.9.5.1 	treatment, destruction, or disposal of waste material?	<input type="checkbox"/> YES <input checked="" type="checkbox"/> NO <input type="checkbox"/> NA
P.9.5.1 	If answer to above question is "Yes", does the project involve an environmentally friendly method that includes appropriate control of emissions and residues resulting from the handling and processing of waste material?	<input type="checkbox"/> YES <input type="checkbox"/> NO <input checked="" type="checkbox"/> NA
P.9.5.3 	risk of release of hazardous materials resulting from their production, transportation, handling, storage, or use?	<input type="checkbox"/> YES <input type="checkbox"/> NO <input checked="" type="checkbox"/> NA

P.9.5.3 	If answer to above question is "yes", does project has measures in place to address health risks?	<input type="checkbox"/> YES <input type="checkbox"/> NO <input checked="" type="checkbox"/> NA
P.9.5.4 	Involve manufacture, trade, and use of chemicals and hazardous materials subject to international bans or phase-outs due to their high toxicity to living organisms, environmental persistence, potential for bioaccumulation, or potential for depletion of the ozone layer	<input type="checkbox"/> YES <input type="checkbox"/> POTENTIALLY <input checked="" type="checkbox"/> NO

If the answer is "yes" or "potentially" to any of the above questions, please provide a brief description of the project situation below. Also, provide justification and/or evidence as necessary to demonstrate compliance with applicable requirements.

Standard procedure is followed at the site during operation and maintenance reflected in their management plants, as well as FSC guidelines and regulations. Capacity building for all companies addresses hazardous and non-hazardous chemicals and/or materials within their project activities.

[P.9.6 | PESTICIDES & FERTILISERS](#)

P.9.6.1 	Does the project involve the use of chemical pesticides?	<input checked="" type="checkbox"/> YES <input type="checkbox"/> NO
P.9.6.5 	Does the project involve purchase, store, manufacture, trade or use products that fall in Classes IA (extremely hazardous) and IB (highly hazardous)	<input type="checkbox"/> YES <input checked="" type="checkbox"/> NO
P.9.6.6 	Does the project use fertilisers, and if so, are measures being taken to minimise their use and nutrient losses to the environment?	<input checked="" type="checkbox"/> YES <input type="checkbox"/> NO

If the answer to any of the questions above is "yes," please explain project situation and how the project will ensure compliance with applicable requirements.

The project follows the national legislation on pesticides and FSC principle and criteria as well as the FSC pesticide policy FSC-POL30-001 V3-0.

Would the project involve or lead to:

P.9.6.1 	chemical pesticides use for pest management?	<input type="checkbox"/> YES <input checked="" type="checkbox"/> POTENTIALLY <input type="checkbox"/> NO
P.9.6.4 	If answer to question above is "yes" or "potentially", does project has documented Chemical Pesticides Policy in place?	<input checked="" type="checkbox"/> YES <input type="checkbox"/> NO <input type="checkbox"/> NA
P.9.6.5 	purchase, store, use, manufacture, or trade in Class II (moderately hazardous) pesticides?	<input type="checkbox"/> YES <input type="checkbox"/> POTENTIALLY <input checked="" type="checkbox"/> NO
P.9.6.5 	If answer to question above is "yes" or "potentially", does project has appropriate controls on manufacture, procurement, or distribution and/or use of these chemicals?	<input type="checkbox"/> YES <input type="checkbox"/> NO <input checked="" type="checkbox"/> NA

If the answer is "yes" or "potentially" to any of the above questions, please provide a brief description of the project situation below. Also, provide justification and/or evidence as necessary to demonstrate compliance with applicable requirements.

The project follows the national legislation on pesticides and FSC principle and criteria as well as the FSC pesticide policy FSC-POL30-001 V3-0.

P.9.7 | HARVESTING OF FORESTS

P.9.7.1 	Does the project have a risk of unsustainable forest management, including timber harvesting?	<input type="checkbox"/> YES <input checked="" type="checkbox"/> NO
P.9.7.1 	Does the project pose a risk of depleting biodiversity and ecosystem functionality in areas where improved forest management is undertaken?	<input type="checkbox"/> YES <input checked="" type="checkbox"/> NO
P.9.7.1 	Does the project risk not meeting requirements for environment-friendly, socially beneficial, and economically viable plantations using native species whenever possible?	<input type="checkbox"/> YES <input checked="" type="checkbox"/> NO

If the answer to any of the questions above is "yes," please explain project situation and how the project will ensure compliance with applicable requirements.

The forests are sustainably managed according to the FSC SLIM principles and criteria.

P.9.8 | FOOD SECURITY

P.9.8.1 	Does the project involve the risk of negatively influencing access to and availability of food for people affected?	<input type="checkbox"/> YES <input checked="" type="checkbox"/> NO
---------------------------	---	--

If the answer to the question above is "yes," please explain project situation and how the project will ensure compliance with applicable requirements.

Please add text here...

Would the project involve or lead to:

P.9.8.1 	modification of the quantity or nutritional quality of food available such as through crop regime alteration or export or economic incentives?	<input type="checkbox"/> YES <input type="checkbox"/> POTENTIALLY <input checked="" type="checkbox"/> NO
---------------------------	--	--

If the answer is "yes" or "potentially" to the above question, please provide a brief description of the project situation below. Also, provide justification and/or evidence as necessary to demonstrate compliance with applicable requirements.

Please add text here...

P.9.9 | ANIMAL WELFARE

P.9.9.1 	Does the project involve any risks to animal welfare? Animal welfare shall be ensured by providing access to water and food, appropriate environment, humane treatment, and staff training. Evidence of mistreatment will be treated as an immediate non-conformity.	<input type="checkbox"/> YES <input checked="" type="checkbox"/> NO
P.9.9.2 	Does the project involve any potential risk of excessive or inadequate use of veterinary medicines?	<input type="checkbox"/> YES <input checked="" type="checkbox"/> NO
P.9.9.4 	Does the project involve the risk of administering synthetic growth promoters, including hormones?	<input type="checkbox"/> YES <input checked="" type="checkbox"/> NO

If the answer to any of the questions above is "yes," please explain project situation and how the project will ensure compliance with applicable requirements.

Please add text here....

Would the project involve or lead to:

P.9.9.1 	animal husbandry or harvesting of fish populations or other aquatic species? ⁵	<input type="checkbox"/> YES <input type="checkbox"/> NO <input checked="" type="checkbox"/> NA
P.9.9.1 	limiting access for animals to basic needs like drinking water, adequate food, daylight, appropriate shelter etc.?	<input type="checkbox"/> YES <input type="checkbox"/> POTENTIALLY <input checked="" type="checkbox"/> NO
P.9.9.3 	inadequate measures to isolate sick animals and control the spread of disease, especially zoonotic diseases?	<input type="checkbox"/> YES <input type="checkbox"/> NO <input checked="" type="checkbox"/> NA
P.9.9.5 	inadequate low-stress methods, equipment, and facilities that facilitate calm animal movement.	<input type="checkbox"/> YES <input type="checkbox"/> NO <input checked="" type="checkbox"/> NA
P.9.9.6 	inadequate measures to ensure that animals are exposed to the least stress possible during transportation and slaughtering?	<input type="checkbox"/> YES <input type="checkbox"/> NO <input checked="" type="checkbox"/> NA
P.9.9.7 	inappropriate spacing per animal and stocking rates per land unit?	<input type="checkbox"/> YES <input type="checkbox"/> NO <input checked="" type="checkbox"/> NA
P.9.9.8 	inadequate measures to address the specific needs of aquatic animals?	<input type="checkbox"/> YES

⁵ 'Involve' means if the project mechanism and/or impact(s) are achieved via changing animal husbandry practices in some way.

		<input type="checkbox"/> NO <input checked="" type="checkbox"/> NA
P.9.9.9 P.9.9.10 	primary production of living natural resources such as animal husbandry, aquaculture, and fisheries? If the answer is yes, implement industry-standard sustainable management practices in line with to one or more relevant and credible standards and utilise available technologies.	<input type="checkbox"/> YES <input type="checkbox"/> NO <input checked="" type="checkbox"/> NA

If the answer is "yes" or "potentially" to any of the above question, please provide a brief description of the project situation below. Also, provide justification and/or evidence as necessary to demonstrate compliance with applicable requirements.

Please add text here....

[P.9.10 | HIGH CONSERVATION VALUE AREAS AND CRITICAL HABITATS](#)

P.9.10.1 	Does the project have the risk of negatively impacting HCV areas and/or critical habitats?	<input type="checkbox"/> YES <input checked="" type="checkbox"/> NO
P.9.10.2 	Does the project in the project area or area of downstream impacts have risks to the following: native tree patches, individual native trees, freshwater resources (including rivers, lakes, swamps, temporary water bodies, and wells), habitats of rare, threatened, and endangered species, and biodiversity-enhancing areas?	<input type="checkbox"/> YES <input checked="" type="checkbox"/> NO

If the answer to any of the questions above is "yes," please explain project situation and how the project will ensure compliance with applicable requirements.

The Project does not affect or alter largely intact or HCV ecosystems, critical habitats, landscapes, key biodiversity areas, or sites identified, as all already existing forests remain, and all protection areas are identified and mapped. The project activities are implemented in productive and agroforestry areas within the Ramsar area, not in protective areas. The Omacha Foundation, in charge of the formulation of the management plan for the Ramsar site account - Rio Bitá, has recently published a book shared as supporting documentation.

Would the project involve or lead to:

P.9.10.1 	identified habitats as HCV areas and or Critical habitats?	<input checked="" type="checkbox"/> YES <input type="checkbox"/> POTENTIALLY <input type="checkbox"/> NO
P.9.10.1 	If answer to above question is "yes", does the project have any risks that could negatively impact the catchment, project success, and surrounding HCV and ecological assets, as well as any measurable adverse impacts on the criteria or biodiversity values for which the critical habitat was designated, and on the ecological processes supporting that biodiversity?	<input type="checkbox"/> YES <input checked="" type="checkbox"/> NO <input type="checkbox"/> NA

P.9.10.1 	If answer to above question is "yes", is a robust, appropriately designed, and long-term Habitats and Biodiversity Action Plan absent which will make the project unable to achieve net gains of those biodiversity values for which the critical habitat was designated?	<input type="checkbox"/> YES <input type="checkbox"/> NO <input checked="" type="checkbox"/> N/A
P.9.10.2 	Does the project area or area of downstream impacts have native tree patches, individual native trees, freshwater resources (including rivers, lakes, swamps, temporary water bodies, and wells), habitats of rare, threatened, and endangered species, and biodiversity-enhancing areas?	<input type="checkbox"/> YES <input type="checkbox"/> POTENTIALLY <input checked="" type="checkbox"/> NO
P.9.10.2 	If the answer to the above question is "yes", will the project have any adverse effects on these areas?	<input type="checkbox"/> YES <input type="checkbox"/> No <input checked="" type="checkbox"/> NA
P.9.10.3 	If the answer to above question is "yes", does the project has opportunities to minimise unwarranted conversion or degradation of the habitat and to enhance the habitat as part of its development?	<input type="checkbox"/> YES <input type="checkbox"/> No <input checked="" type="checkbox"/> NA
P.9.10.4 	Is the project applying Land Use & Forest Activity Requirements and managing a minimum 10% of the project area to protect or enhance the biological diversity of native ecosystems following HCV approach as per the given requirements?	<input checked="" type="checkbox"/> YES <input type="checkbox"/> No <input type="checkbox"/> NA
P.9.10.5 	Are opinions and recommendations of an Expert Stakeholder(s) not sought and demonstrated as being included in the project design?	<input type="checkbox"/> YES <input type="checkbox"/> NO <input checked="" type="checkbox"/> NA

If the answer is "yes" or "potentially" to any of the above question, please provide a brief description of the project situation below. Also, provide justification and/or evidence as necessary to demonstrate compliance with applicable requirements.

See Biodiversity monitoring above.

[P.9.11 | ENDANGERED SPECIES](#)

P.9.11.1 	Does the project lead to the reduction or negative impact on any recognised Endangered, Vulnerable or Critically Endangered species?	<input type="checkbox"/> YES <input checked="" type="checkbox"/> NO
----------------------------	--	--

If the answer to question above is "yes," please explain project situation and how the project will ensure compliance with applicable requirements.

Please add text here....

Would the project involve or lead to:

P.9.11.2 	distortion of habitats of endangered species?	<input type="checkbox"/> YES <input type="checkbox"/> POTENTIALLY <input checked="" type="checkbox"/> NA
P.9.11.2 	If answer to the above question is "yes", does the project plan to protect and enhance them?	<input type="checkbox"/> YES <input type="checkbox"/> POTENTIALLY <input type="checkbox"/> NO

		<input checked="" type="checkbox"/> N/A
P.9.11.2 	Are opinions and recommendations of an Expert Stakeholder(s) not sought and demonstrated as being included in the project design?	<input type="checkbox"/> YES <input type="checkbox"/> NO <input checked="" type="checkbox"/> NA

If the answer is "yes" or "potentially" to any of the above question, please provide a brief description of the project situation below. Also, provide justification and/or evidence as necessary to demonstrate compliance with applicable requirements.

Please add text here...

[P.9.12 | INVASIVE ALIEN SPECIES](#)

P.9.12.1 	Does project introduce any alien species (not currently established in the country or region of the project) into new environments?	<input type="checkbox"/> YES <input checked="" type="checkbox"/> NO
----------------------------	---	--

If the answer to question above is "yes," please explain project situation and how the project will ensure compliance with applicable requirements.

Please add text here...

Would the project involve or lead to:

P.9.12.1 	risk of introducing any alien species with a high risk of invasive behaviour regardless of whether such introductions are permitted under the existing regulatory framework?	<input type="checkbox"/> YES <input type="checkbox"/> POTENTIALLY <input checked="" type="checkbox"/> NO
P.9.12.1 	risk of potential accidental or unintended introductions including the transportation of substrates and vectors (such as soil, ballast, and plant materials) that may harbour alien species.	<input type="checkbox"/> YES <input type="checkbox"/> POTENTIALLY <input checked="" type="checkbox"/> NO
P.9.12.2 	risk of spreading alien species into areas in which they have not already been established?	<input type="checkbox"/> YES <input type="checkbox"/> POTENTIALLY <input checked="" type="checkbox"/> NO

If the answer is "yes" or "potentially" to any of the above question, please provide a brief description of the project situation below. Also, provide justification and/or evidence as necessary to demonstrate compliance with applicable requirements.

Please add text here...

APPENDIX 2 - CONTACT INFORMATION OF PROJECT DEVELOPER(S)

Organization name	FORLIANCE GmbH
Registration number with relevant authority	DE293284454
Street/P.O. Box	Eifelstr. 20
Building	-
City	Bonn
State/Region	North Rhine-Westphalia
Postcode	53119
Country	Germany
Telephone	+49 (0) 228-969 119 – 0
E-mail	climateproject@forliance.com julian.ekelhof@forliance.com
Website	Forliance.com
Contact person	Julian Ekelhof
Title	Senior Director Climate Solutions
Salutation	Mr.
Last name	Ekelhof
Middle name	-
First name	Julian
Department	Climate Solutions
Mobile	-
Direct tel.	
Personal e-mail	

APPENDIX 3 - LUF ADDITIONAL INFORMATION

<p>Risk of change to the Project Area during Project Certification Period:</p>	<p>Low risk due to a previous analysis before acquiring and including the area to the project. Efficient sustainable management combined with the active participation of important national and international stakeholders demonstrate transparency and permanence of the project activities during 30 years crediting period. Also, contracts signed by project participants commits to participate during the complete crediting period.</p>
<p>Risk of change to the Project activities during Project Certification Period:</p>	<p>Low risk due to a previous analysis before acquiring and including the area to the project. Aldea Forestal and Inverbosques are committed to continue the forestry practices in the region under a conservation approach.</p>
<p>Land-use history and current status of Project Area:</p>	<p>Current situation: Before the project activity started, the baseline of the project area was grassland. All these areas were evaluated and classified as applicable planting areas for A/R activities. Other small patches of native vegetation left were classified and nowadays managed as conservation areas. Other areas (previously planted or due to the project activity) located in the border of a river or other watershed are also classified as conservation areas. Further cattle ranging was an activity identified during the additionality assessment. By mid-80s Colombia completed the process of territorial occupation of the Caribbean and Andean regions and to a lesser extent the Orinoco. Regions in the Orinoco were occupied to implement cattle farming systems.</p>
<p>Socio-Economic history:</p>	<p>Current situation: due to a marginal and difficult access location, no previous activities were reported. There was a lack of investment and know-how to create a business model. The previous owner decides to sell the land and migrate to the city, to invest in other activities. Forestry activities in different rural areas can be an effective support to alleviate regional poverty, promote</p>

	<p>regional know-how, increment capacity building and be a key element for socio-economic development, by providing directly and indirectly jobs. Further, cattle ranging was an activity identified during the additionality assessment (see above).</p>
<p>Forest management applied (past and future)</p>	<p>There was no forest management in the area before the project start and the corresponding afforestation activities. The project proponents were originally considering a rotational management system but have decided to adhere to a conservation system. In this system, well adapted species were planted and are now managed and supported to grow into a mature forest. Detailed management practices are described in folder 14_Forest Management.</p>
<p>Forest characteristics (including main tree species planted)</p>	<p>The main species planted are: Acacia Mangium Pinus sp. Eucalyptus sp All three species are fast growing species used already in other parts of the country for land rehabilitation and reforestation. The project area is divided into multiple parcels, alternating species and planting years.</p>
<p>Main social impacts (risks and benefits)</p>	<p>The main social benefits of the project are: Poverty alleviation: many persons in rural areas are forced to migrate to the cities due to the lack of regional job opportunities. Equal rights: the company has a multicultural team and a mix of people with equal rights without gender discrimination. Capacity building: the employees and also neighbours are continuously learning about the importance of sustainable management and good practices. Equal rights: a multicultural team requires also the need of having a comprehensive and tolerant perception.</p>
<p>Main environmental impacts (risks and benefits)</p>	<p>The main environmental benefits of the project are: Building new forests: a mix A/R is a key element to obtain an important synergy</p>

	<p>between the different natural resources existing in the area, and increase the protection of those basic elements: retaining water in the trees and soil to prevent flooding, prevent soil erosion protecting the nutrients and soil microelements, provide shelter to migratory and native animals and insects.</p> <p>Forest Conservation: through this activity, the project ensures native ecosystems connectivity; creating small corridors that impact positively the interconnectivity of different regional natural ecosystems.</p> <p>Climate change: it is a climate project with focus on mitigation strategies to fight global warming.</p> <p>Some low risks of the project are: Climate impact: due to climate change strong winds, fires, and/ or floodings might occur.</p>
Financial structure	<p>The project as it is under a conservation scheme, depends of the revenue of the carbon finance. Legal contracts of investor to kick-off the project activities are available to the auditor. This includes a transparent process to provide land tenure titles, specify the owners of the resources inside the project (wood, CO2 and other resources).</p>
Infrastructure (roads/houses etc):	-
Water bodies:	-
Sites with special significance for indigenous people and local communities - resulting from the Stakeholder Consultation:	Not detected
Where indigenous people and local communities are situated:	-
Where indigenous people and local communities have legal rights, customary rights or sites with special cultural, ecological, economic, religious or spiritual significance:	-
Risk of change to the Project Area during Project Certification Period:	<p>Low risk due to a previous analysis before acquiring and including the area to the project. Efficient sustainable management combined with the active participation of important national and international stakeholders demonstrate transparency and permanence of the project activities during 30 years</p>

	<p>crediting period. Also, contracts signed by project participants commits to participate during the complete crediting period.</p>
<p>Risk of change to the Project activities during Project Certification Period:</p>	<p>Low risk due to a previous analysis before acquiring and including the area to the project. Aldea Forestal and Inverbosques are committed to continue the forestry practices in the region under a conservation approach.</p>
<p>Land-use history and current status of Project Area:</p>	<p>Current situation: Before the project activity started, the baseline of the project area was grassland. All these areas were evaluated and classified as applicable planting areas for A/R activities. Other small patches of native vegetation left were classified and nowadays managed as conservation areas. Other areas (previously planted or due to the project activity) located in the border of a river or other watershed are also classified as conservation areas.</p> <p>Further cattle ranging was an activity identified during the additionality assessment. By mid-80s Colombia completed the process of territorial occupation of the Caribbean and Andean regions and to a lesser extent the Orinoco. Regions in the Orinoco were occupied to implement cattle farming systems.</p>
<p>Socio-Economic history:</p>	<p>Current situation: due to a marginal and difficult access location, no previous activities were reported. There was a lack of investment and know-how to create a business model. The previous owner decides to sell the land and migrate to the city, to invest in other activities. Forestry activities in different rural areas can be an effective support to alleviate regional poverty, promote regional know-how, increment capacity building and be a key element for socio-economic development, by providing directly and indirectly jobs. Further, cattle ranging was an activity identified during the additionality assessment (see above).</p>
<p>Forest management applied (past and future)</p>	<p>There was no forest management in the area before the project start and</p>

	<p>the corresponding afforestation activities. The project proponents were originally considering a rotational management system but have decided to adhere to a conservation system. In this system, well adapted species were planted and are now managed and supported to grow into a mature forest. Detailed management practices are described in folder 14_Forest Management.</p>
<p>Forest characteristics (including main tree species planted)</p>	<p>The main species planted are:</p> <ul style="list-style-type: none"> • Acacia Mangium • Pinus sp. • Eucalyptus sp <p>All three species are fast growing species used already in other parts of the country for land rehabilitation and reforestation. The project area is divided into multiple parcels, alternating species and planting years.</p>
<p>Main social impacts (risks and benefits)</p>	<p>The main social benefits of the project are:</p> <ul style="list-style-type: none"> • Poverty alleviation: many persons in rural areas are forced to migrate to the cities due to the lack of regional job opportunities. • Equal rights: the company has a multicultural team and a mix of people with equal rights without gender discrimination. • Capacity building: the employees and also neighbours are continuously learning about the importance of sustainable management and good practices. <p>Equal rights: a multicultural team requires also the need of having a comprehensive and tolerant perception.</p>
<p>Main environmental impacts (risks and benefits)</p>	<p>The main environmental benefits of the project are:</p> <p>Building new forests: a mix A/R is a key element to obtain an important synergy between the different natural resources existing in the area, and increase the protection of those basic</p>

	<p>elements: retaining water in the trees and soil to prevent flooding, prevent soil erosion protecting the nutrients and soil microelements, provide shelter to migratory and native animals and insects.</p> <p>Forest Conservation: through this activity, the project ensures native ecosystems connectivity; creating small corridors that impact positively the interconnectivity of different regional natural ecosystems.</p> <p>Climate change: it is a climate project with focus on mitigation strategies to fight global warming.</p> <p>Some low risks of the project are: Climate impact: due to climate change strong winds, fires, and/ or floodings might occur.</p>
Financial structure	<p>The project as it is under a conservation scheme, depends of the revenue of the carbon finance. Legal contracts of investor to kick-off the project activities are available to the auditor. This includes a transparent process to provide land tenure titles, specify the owners of the resources inside the project (wood, CO2 and other resources).</p>
Infrastructure (roads/houses etc):	-
Water bodies:	-
Sites with special significance for indigenous people and local communities - resulting from the Stakeholder Consultation:	Not detected
Where indigenous people and local communities are situated:	-
Where indigenous people and local communities have legal rights, customary rights or sites with special cultural, ecological, economic, religious or spiritual significance:	-

APPENDIX 4 - DESIGN CHANGES

A4.1. Details of proposed or actual design change

The project has switched from afforestation with a rotation model to a conservation model. While the ex-ante estimation of the carbon model was always based on a conservation approach, the project had originally planned to build up a rotation forestry system, which was reflected in all project documentation. One previous FAR was to update the carbon model to account for rotational harvesting. However, before reaching the end of the first rotation, some project participants decided not to harvest the established forest stands and thus wished to change to a conservation model instead. Another Design Change, only two of the original project participants will continue under the Gold Standard ID 4221: Inverbosques and Aldea Forestal. Reforestadora La Paz will transition to a stand-alone project, as the company intends to continue operating under the previously certified rotation management.

A4.2. Describe the impacts of design change on the following

As the participating companies had always operated independently from each other, the removal of La Paz from the project does not have any impact on the following parameters. Therefore, only the change from rotation to conservation is assessed.

a. **Additionality**

Additionality was originally assessed in 2016 using the A/R CDM 'Combined tool to identify the baseline scenario and demonstrate additionality in A/R CDM project activities'. Here, only a barrier analysis was conducted instead of an additional investment analysis, as the baseline was deemed to be the only plausible alternative land use scenario. This is mainly due to the persisting difficult transport conditions in the project region, which make any investment into other commercial projects unviable. Even though the need for operational infrastructure like a sawmill is a barrier reduced by converting the project from rotation into a conservation system, the main barrier for reforestation activities is even stronger now: Financial return from a SLIMF project is equal to zero and as a consequence, access to bank loans or investors is even more limited.

In the Alternative Scenario Analysis, CIF "Certificado de Incentivo Forestal" was further mentioned as a governmental indicative that is trying since years to incentive forestry

activities. While there were in the past many barriers regarding the access to this funding opportunity, it is only available to newly established plantations⁷⁴. Therefore, it is no longer relevant for the assessment of additionality.

In conclusion, additionality is even stronger after the design change, as only very limited income will be obtained from timber sales, and carbon finance is the main income source for the project participants to continue the forestry and monitoring practices.

To further support an understanding of the project's additionality, a detailed financial overview is available to the auditor.

b. *Applicability of methodology and other methodological regulatory documents with which the project activity has been certified*

The originally applied methodology was the Gold Standard A/R methodology 0.9 with the following applicability requirements:

- 1. Areas shall not be on wetlands.*
- 2. Areas with organic soils shall not be drained or irrigated (except for irrigation for planting).*
- 3. Soil disturbance (through ploughing, digging of pits, stump removals, infrastructure, etc.) on organic soils shall be in less than 10% of the area that is submitted to certification (not 10% of the entire project area).*
- 4. The most likely scenario without the project (baseline scenario) shall be defined for the project area. This scenario shall not show any significant increase of the Baseline biomass ('tree' and 'non-tree').*

All four criteria are not impacted by the design change, since the planted area was not changed, and organic soils are only present in the conservation areas.

With the ongoing Design Certification Renewal, the project is applying the updated Methodology for Afforestation/Reforestation (A/R) GHG emission reduction & sequestration V 2.0, which adds the two following applicability criteria:

- 1. Projects can apply all silvicultural systems:*
 - i. Conservation forests (no use of timber)*
 - ii. Forests with selective harvesting*
 - iii. Rotation forestry*

Instead of falling under category 1.a.iii, the project applies the equally eligible silvicultural system listed under 1.a.i.

2. All projects can include agriculture (agroforestry) or pasture (silvopasture) activities.

The project does not include agroforestry nor silvopastoral activities, neither before nor after the design change.

As the project was not implemented as described in the registered project documentation, the applicability and application of the baseline methodology with which the Project has been registered shall be reassessed. However, since the Design Certification Renewal requests an update of the Baseline assessment anyways, this step is skipped.

c. Compliance with the monitoring plan of the applied methodology

The applied methodology only prescribes the monitoring of tree biomass by calculating the stem volume in a selection of sampling plots. Optionally, soil organic material can be monitored. Both pools are monitored irrespectively of the applied silvicultural system. Thus, monitoring for the methodology is not impacted by the Design Change.

d. Level of accuracy and completeness in the monitoring of the project activity compared with the requirements contained in the registered monitoring plan

Since the previous monitoring plan for the project activity was already calibrated to fill a conservation-based carbon model, there is no impact on the accuracy and completeness of monitoring. Monitoring of tree growth will be continued as before.

e. Scale of the project activity

Project scale is not affected. Even though one project participant is removed, with 71,367.11 ha and an annual emission reduction of over 130,000 tCO₂ (See section B.6.4.) the project is still considered large scale as per GHG Emissions Reduction & Sequestration Product Requirements v.2.2 Section 9.1.2.

f. Stakeholder consultation

According to the GS4GG Design Change Requirements 1.1, an additional stakeholder consultation has to be undertaken if the change constitutes an increase or shift of areas. Since this is not the case, and the change in the forest management system has no different implications for local stakeholders than before, it was deemed unnecessary to conduct a consultation specifically for the change.

Other than that, stakeholder consultations continue to be held annually in the framework of the FSC certification audits.

g. Sustainable development criteria

With the ongoing Design Certification Renewal, sustainable development is newly monitored via the SDG tool. Several indicators were removed from the SDG monitoring plan since they did not fit this framework, or were actually describing safeguarding principles instead of additional benefits. However, the only change in the monitoring plan attributable to the Design Change is the removal of SDG 12: due to the design change from rotation to conservation, harvested volumes are no longer accounted for. Consequently, sustainable timber production is no longer a significant SDG impact and SDG 12 was taken out of the list of monitored SDG impacts.

h. ***Safeguarding assessment***

There is no impact on the compliance with safeguarding principles due to the change in the management system. The companies' principles and management policies, including their approach to treating workers and the surrounding communities, are not touched by the change (Principles 1 to 6).

Further, as FSC certification applying the SLIMF (small or low-intensity managed forest) management system even reduces impacts on the environment further, as no harvesting activities are taking place that might cause additional emissions or disturb the ecosystem. This means that principle 9.7 Harvesting of Forests is no longer applicable to the project, and any risks related to principles 7 to 9.1 as well as 9.10 and 9.11 are further reduced.

The assessment of 9.3 to 9.6 is not impacted by the Design Change, and principles 9.8 and 9.9 remain irrelevant for the project.

There were no new comments by stakeholders or a revised EIA.

i. ***Compliance with applicable legislation***

The number of applicable laws and regulations has been reduced due to the reclassification to the FSC SLIMF standard, which accompanied the Design Change. Several national resolutions and decrees no longer apply to the project participants due to the character of a low impact project (see list below). A comprehensive overview and up to date permits are within the folder: 07_Environment, the auditor can find all permits and laws applicable per organization. No new approvals/licenses from the environmental and/or regulatory agencies are needed, but some existing ones became redundant.

j. Only for LUF Projects: Transparent summary of all approved changes in Project Area, Eligible Area and accompanying changes in ex-ante emissions removals.

DATE OF APPROVED DESIGN CHANGE (MM/DD/YYYY)	PROJECT AREA (HA)		ELIGIBLE AREA (HA)		EX-ANTE ESTIMATE (TCO2E)	
	INCREASE OR DECREASE ?	VALUE (HA)	INCREASE OR DECREASE ?	VALUE (HA)	INCREASE OR DECREASE ?	PERCENTAGE (%)
Performance review (2019)		84,310.3		14,624		5,904,863
Renewal validation (2023)	Decrease	56,259	Decrease	14,464	Decrease (for 30 years)	4,155,846 (29.6%)
Performance review (2023)	Increase	73,804.74	Increase	19,208.39	Increase	5,589,319 (34.5%)
Performance review (2024)	Increase	106,522.07	Increase	21,413.99	Increase	5,879,566 (5.19%)

DOCUMENT HISTORY

Version	Date	Remarks
1.5	29 June 2023	Editorial changes to match V2.1 of the Safeguarding Principles Requirements
1.4	21 June 2023	Editorial changes to match V2.0 of the Safeguarding Principles Requirements
1.3	14 April 2023	Integrated the design change memo as annex of the document. Editorial changes
1.2	14 October 2020	Hyperlinked section summary to enable quick access to key sections Improved clarity on Key Project Information Inclusion criteria table added Gender sensitive requirements added Prior consideration (1 yr rule) and Ongoing Financial Need added Safeguard Principles Assessment as annex and a new section to include applicable safeguards for clarity Improved Clarity on SDG contribution/SDG Impact term used throughout Clarity on Stakeholder Consultation information required Provision of an accompanying Guide to help the user understand detailed rules and requirements
1.1	24 August 2017	Updated to include section A.8 on 'gender sensitive' requirements
1.0	10 July 2017	Initial adoption