



Verified Carbon Standard

XICO2E: MEXICAN REFORESTATION PROJECT

(Under Development)



DOCUMENT PREPARED BY FORLIANCE GMBH

| | |
|----------------------|--|
| Project Title | XiCO2e: Mexican Reforestation Project |
| Version | 1.0 |
| Date of Issue | 24.06.2022 |
| Prepared By | FORLIANCE GmbH |
| Contact | FORLIANCE GmbH: Lina Ávila, Project Manager (Natural Carbon Solutions) Office: Eifelstraße 20 53119 Bonn Germany Email: lina.avila@forliance.com |

Contents

| | | |
|----------|---|-----------|
| 1 | PROJECT DETAILS..... | 4 |
| 1.1 | Summary Description of the Project | 4 |
| 1.2 | Sectoral Scope and Project Type | 4 |
| 1.3 | Project Eligibility | 4 |
| 1.4 | Project Design | 6 |
| 1.5 | Project Proponent | 7 |
| 1.6 | Other Entities Involved in the Project | 7 |
| 1.7 | Ownership..... | 8 |
| 1.8 | Project Start Date | 8 |
| 1.9 | Project Crediting Period | 8 |
| 1.10 | Project Scale and Estimated GHG Emission Reductions or Removals | 8 |
| 1.11 | Description of the Project Activity | 8 |
| 1.12 | Project Location | 8 |
| 1.13 | Conditions Prior to Project Initiation | 10 |
| 1.14 | Compliance with Laws, Statutes and Other Regulatory Frameworks | 12 |
| 1.15 | Participation under Other GHG Programs | 12 |
| 1.16 | Other Forms of Credit..... | 13 |
| 1.17 | Sustainable Development Contributions | 14 |
| 1.18 | Additional Information Relevant to the Project | 15 |
| 2 | SAFEGUARDS | 15 |
| 2.1 | No Net Harm | 15 |
| 2.2 | Local Stakeholder Consultation | 15 |
| 2.3 | Environmental Impact | 15 |
| 2.4 | Public Comments | 15 |
| 2.5 | AFOLU-Specific Safeguards | 15 |
| 3 | APPLICATION OF METHODOLOGY..... | 15 |
| 3.1 | Title and Reference of Methodology | 16 |
| 3.2 | Applicability of Methodology | 16 |
| 3.3 | Project Boundary | 16 |
| 3.4 | Baseline Scenario | 18 |
| 3.5 | Additionality | 19 |
| 3.6 | Methodology Deviations | 19 |

| | | |
|----------|---|-----------|
| 4 | QUANTIFICATION OF GHG EMISSION REDUCTIONS AND REMOVALS | 19 |
| 4.1 | Baseline Emissions | 19 |
| 4.2 | Project Emissions | 19 |
| 4.3 | Leakage..... | 19 |
| 4.4 | Net GHG Emission Reductions and Removals..... | 19 |
| 5 | MONITORING | 19 |
| 5.1 | Data and Parameters Available at Validation | 19 |
| 5.2 | Data and Parameters Monitored..... | 19 |
| 5.3 | Monitoring Plan..... | 19 |
| | APPENDIX | 21 |

1 PROJECT DETAILS

1.1 Summary Description of the Project

The XiCO2e: Mexican Reforestation Project aims for the sustainable implementation and management of *Gmelina arborea* plantations in degraded areas in México. The project proponents are ALA BOOL TRUST SA DE CV and FORLIANCE GmbH. ALA BOOL is a Mexican company that through individual business plans, joins small and medium landowners to connect best forestry practices with direct access to clients and markets. FORLIANCE is a German based company that plans, manages, and develops land use carbon projects, which align with the climate action strategies designed for corporates, their products, and services. ALA BOOL and FORLIANCE have signed a partnership contract for the development of the XiCO2e: Mexican Reforestation Project. Both entities have the overall control and responsibility for the project. ALA BOOL leads the forestry activities while FORLIANCE guides the certification process and supports the commercialization of carbon credits.

ALA BOOL as the project proponent, has a legal contract signed with PROXYLO S.A.P.I DE C.V., a private company that is dedicated to the establishment, management, and use of *Gmelina arborea* plantations in Mexico. The first instance of the XiCO2e: Mexican Reforestation Project includes areas leased by PROXYLO S.A.P.I DE C.V. from private landowners in the states of Tabasco and Tamaulipas (southeast and northeast Mexico respectively). The project area was previously dedicated to agricultural activities (sugar cane, rice, citrus, cocoa), and currently, the landowners have emigrated from the community, unable to attend the use of their land. Since 2017 PROXYLO S.A.P.I DE C.V., introduced reforestation activities with high quality technology to address the poor-quality conditions of an area where there is no previous forestry culture.

The project activities are carried out and monitored according to approved project methodology AR-ACM0003 for a project period of 30 years. The project proponents will provide technical and administrative support for the project implementation and are also responsible for all key activities needed to issue and sell carbon offsets from the tree reforestation.

1.2 Sectoral Scope and Project Type

The sectoral scope of the project is 14, Agriculture, Forestry and Other land Uses (AFOLU). Within this category, the project is under the Afforestation, Reforestation, Revegetation (ARR) type.

1.3 Project Eligibility

Mexico defines its forests as an area having equal to or greater than one (1) hectare, with tree crown cover equal to or greater than 30% and an average height of trees (in-situ) equal to or greater than four (4) meters¹. Based on this definition, an eligibility analysis was developed to determine the eligible area

¹ Available in: <https://cdm.unfccc.int/DNA/index.html>

(ha) that can be included as part of the project. The start year of the activities was taken as 2017 and the forest cover was evaluated over the previous 10 years (2007-2017). The areas that present non-forest coverage were selected as eligible for ARR activities, while the remaining areas were defined as ineligible.

The results showed a total of 1,397.1 ha that meet the eligibility criteria for the first instance of the project, which corresponds to PROXYLO *Gmelina arborea* plantations. Table 1 summarizes the eligible areas in the States of Tabasco and Tamaulipas, while Figure 1 and Figure 2 show the corresponding geographical distribution.

Table 1. Eligible areas for the first instance of the XiCO2e: Mexican Reforestation Project.

| State | Total Area (ha) | First Instance Area (ha) | Total Properties Involved | Evaluation |
|--------------|-----------------|--------------------------|---------------------------|---------------|
| Tabasco | 1,418 | 1,194 | 52 | Retroactivity |
| Tamaulipas | 215.3 | 203.12 | 28 | Retroactivity |
| Total | 1,633.3 | 1,397.1 | 80 | |

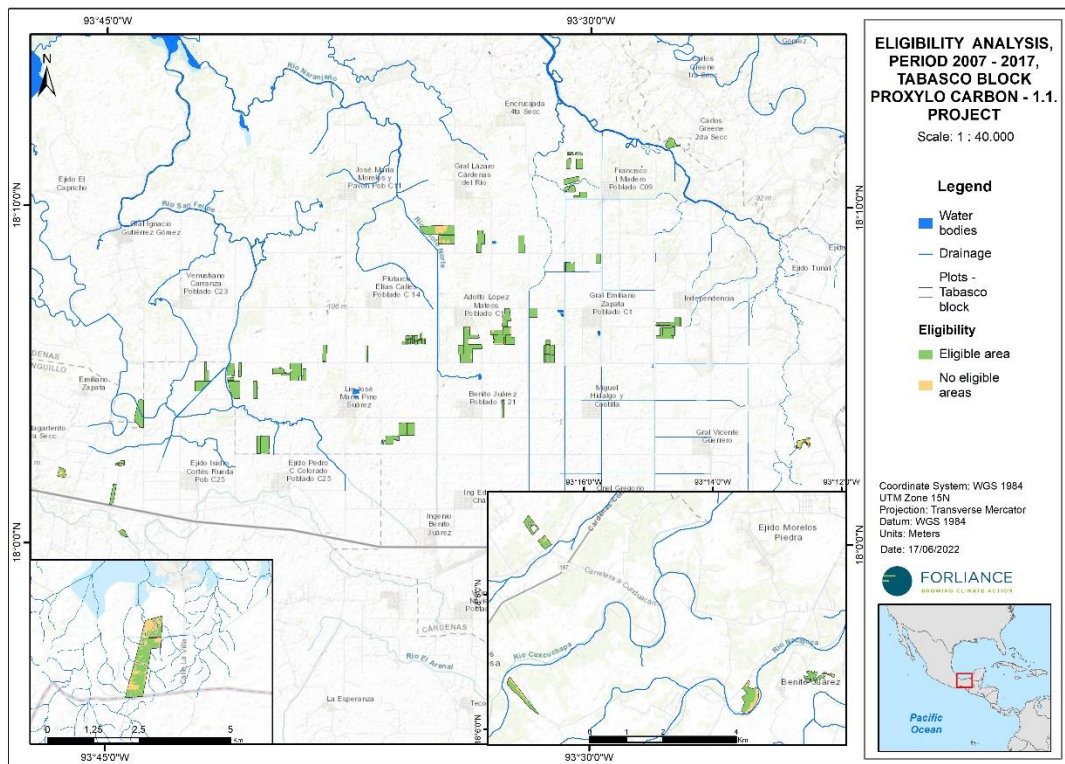


Figure 1. Eligible areas for the first instance in the state of Tabasco.

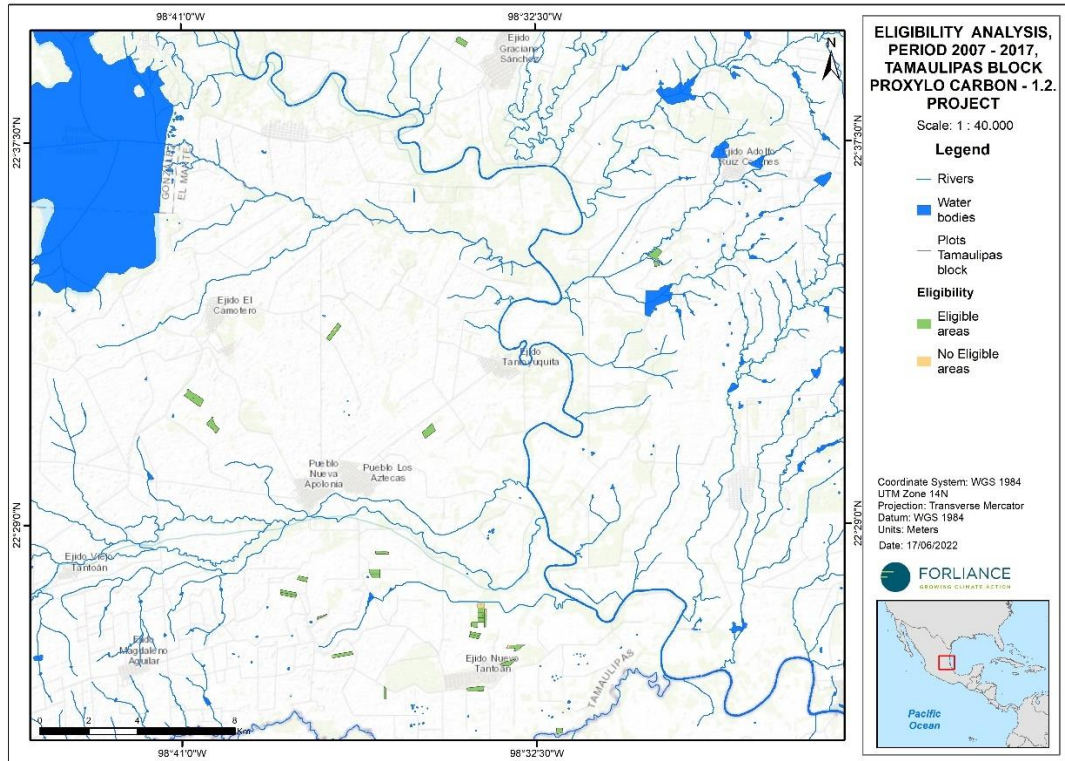


Figure 2. Eligible areas for the first instance in the state of Tamaulipas.

1.4 Project Design

The XiCO2e: Mexican Reforestation Project has been designed and will be implemented as a grouped project.

- The project includes a single location or installation only
- The project includes multiple locations or project activity instances, but is not being developed as a grouped project
- The project is a grouped project

Eligibility Criteria

Not applicable for project listing document.

1.5 Project Proponent

| | |
|--------------------------|---|
| Organization name | ALA BOOL TRUST SA DE CV |
| Contact person | Germánico Galicia García; Consuelo Marisel Figueroa Navarro |
| Title | Project Director; Deputy director of document management and information |
| Address | Jardín de los pensamientos no. 45 Col. Jardines de Santa Anita, Zapopan, Jalisco Sirio no. 5538 Col Arboledas 2a Sección, Zapopan, Jalisco |
| Telephone | +52 33 3929 7107; +52 33 1255 9460 |
| Email | ggalicia@ala-bool.com ; cfigueroa@ala-bool.com |

| | |
|----------------------------|--|
| Organization name | FORLIANCE GmbH |
| Role in the project | Project Proponent and Carbon Expert |
| Contact person | Lina Ávila |
| Title | Project Manager (Natural Carbon Solutions) |
| Address | Eifelstraße 20 53119 Bonn Germany |
| Telephone | +49 (0) 228-969 119 - 0 |
| Email | lina.avila@forliance.com |

1.6 Other Entities Involved in the Project

| | |
|----------------------------|--|
| Organization name | PROXYLO S.A.P.I DE C.V. |
| Role in the project | Forestry Expert |
| Contact person | Rafael Eduardo Riaño Masó |
| Title | General director |
| Address | Calle Grevilleas s/n, lote 4, fraccionamiento Pozo Azul, Xalapa, Veracruz, CP 91097. |
| Telephone | +52 228 1024580 |

Email

rafaelriano@me.com

1.7 Ownership

Lands involved in the first instance of the XiCO₂e: Mexican Reforestation Project include 80 properties leased by PROXYLO S.A.P.I DE C.V. from private landowners in the states of Tabasco and Tamaulipas. Through legal contracts with these landowners, PROXYLO S.A.P.I DE C.V. has the right to establish, manage and dispose freely of the outcomes and products of the forest commercial plantations. ALA BOOL as one of the project proponents, has a legal contract signed with PROXYLO S.A.P.I DE C.V. which assigned them as the entity that owns and commercializes the carbon credits associated with the reforestation activities in the 80 properties involved in this project first instance. As mentioned previously, ALA BOOL and FORLIANCE have signed a partnership contract for the development of the XiCO₂e: Mexican Reforestation Project and both entities have the overall control and responsibility for the project.

1.8 Project Start Date

The project start date is selected as September 15th, 2017. By this date, contracts between private landowners and PROXYLO S.A.P.I DE C.V. have been signed. The forest plantations in Tabasco are registered and the Ministry of Environment and Natural Resources (SEMARNAT) has issued a certificate that proves that plantations legally comply with the General Law of Sustainable Forest Development of Mexico.

1.9 Project Crediting Period

The crediting period of the project is 30 years. The period starts from September 15th, 2017, and ends on September 15th, 2047.

1.10 Project Scale and Estimated GHG Emission Reductions or Removals

The estimated annual GHG emission reductions/removals of the project are:

- <20,000 tCO₂e/year
- 20,000 – 100,000 tCO₂e/year
- 100,001 – 1,000,000 tCO₂e/year
- >1,000,000 tCO₂e/year

1.11 Description of the Project Activity

The project will achieve greenhouse gas (GHG) emissions reductions through the reforestation with *Gmelina arborea* plantations in previously degraded areas. It is expected that these degraded areas will not revert to a non-degraded state without the intervention of anthropogenic influences and financial

support. The current conditions of these degraded areas are expected to further deteriorate if not for the implementation of the project activities and therefore will continue to release carbon emissions unless the project activities are implemented.

The reforested areas contributed to minimizing further soil erosion by providing cover to the areas and will continue to reduce soil erosion thereby protecting and restoring the degraded areas. GHG removals will be achieved through sequestration of the reforested *Gmelina arborea* plantations as evident from the forest sequestration through the selected carbon pools (above ground biomass, below ground biomass and soil organic carbon); these actions directly contribute to the mitigation of climate change. The project activities further provide additional co-benefits specially by the creation of employment opportunities to the local stakeholders and enhancing the overall economic situation of the areas and the region in general.

1.12 Project Location

The plantations of the first instance of the project are located in the States of Tabasco (municipalities of Cárdenas, Huimanguillo, Centro and Cunduacán) and Tamaulipas (municipalities of Gonzalez and El Mante). The distribution of the plantations is shown in Figure 3. The coordinates of the plantation's farms are submitted separately as a KML file.

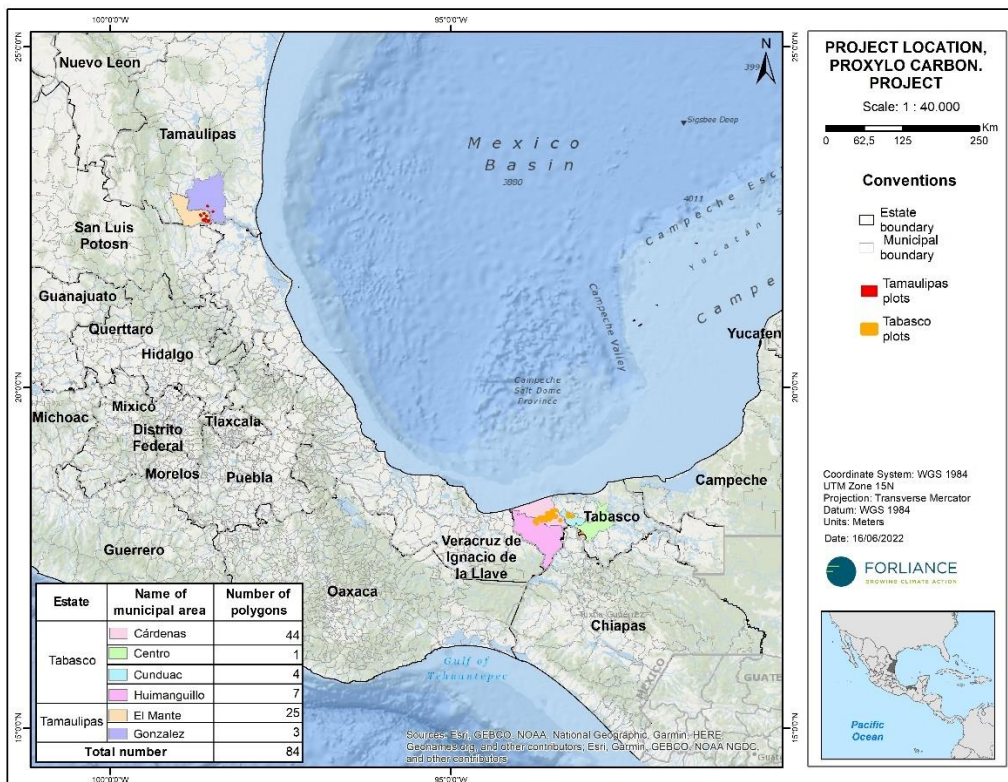


Figure 3. Project area location in Tabasco and Tamaulipas, Mexico.

1.13 Conditions Prior to Project Initiation

The following section correspond to the area in which the reforestation project activities have been implemented. As mentioned before, the plantations for this first instance are located in the States of Tabasco and Tamaulipas, in six main municipalities: Cárdenas, Huimanguillo, Centro, Cunduacán, El Mante, and Gonzalez. This section covers an overview of environmental conditions of the municipalities and project areas (plantations), including a description of climate, hydrology, topography, soils, vegetation and ecosystems.

Tabasco State

The state of Tabasco is located in the southeast of the country. The state is divided into productive regions or also called subregions, which group municipalities with similar geographic and productive characteristics. The project is taking place in the sub-region called Chontalpa. Tabasco is the region of Mexico with a complex hydrological network and with the highest rainfall recorded of the country, due to its proximity to the sea and its flat and low altitude terrain. Most of the state is influenced by warm and semi-warm climates which, together with the precipitation rates, represents one of the main characteristics for the development of intensive agricultural and livestock activities. Irrigated agriculture is represented by the production of cocoa, sugar cane and bananas. In Tabasco the project first instance involves the municipalities of Cárdenas, Huimanguillo, Centro, and Cunduacán.

Municipality of Cardenas

Cardenas outstands for its flat terrain in areas of depression. Its climate is warm-humid with abundant rains in summer. The precipitation regime is characterized by a total rainfall of 2,643 mm and an average annual temperature of 26 °C. The maximum height of the whole municipality is 10 meters above sea level (masl).

Most of the surface is classified as gleysols, which are soils generally with clayey or loamy textures, which present problems of excess moisture due to poor drainage. As part of the productive activities, the agricultural area represents 25% of the municipality, livestock 54%, forestry 6% (timber trees used for making furniture) and 15% corresponds to urban areas, bodies of water and unproductive areas.

Municipality of Huimanguillo

Huimanguillo is the largest municipality in the Mexican state of Tabasco. Due to its extension, this municipality presents three different forms of relief; in the western part it presents soils characteristic of coastal areas, which cover 2% of its surface; the southern part presents a mountainous relief, which covers 11% of the territory. The remaining 87% of the municipal area is occupied by the Tabasco plain, which is the dominant form of relief in the state.

The average annual rainfall in the state is 2,290 mm. Due to its orography, Huimanguillo presents two types of climates. The warm humid with abundant rains in summer and average annual temperature of 26.2 °C. And in the areas of mountainous relief, the warm humid climate with rains throughout the year, which is the climate that the high jungles of the Tabasco Mountain range present; whose average temperature varies between 25.4 °C and 26.9 °C.

In the state you can find high evergreen forest with trees over 30 m tall and some medium evergreen forest from 15 to 30 m high such as cedar, mahogany and tatúan. Another important type of vegetation is the popales, low-lying soils prone to flooding, where corn, beans and squash are grown at different times of the year. The agricultural activity in the municipality is destined to the production of citrus fruits and basic grains.

Municipality of Cunduacán

The municipality has a flat conformation, with the highest elevation being 40 meters above sea level. The climate is hot-humid with abundant rains in summer, average annual temperature of 26.2°C, and a rainfall regime of 1,947 mm per year. This municipality does not present areas with original vegetation, except for a small portion of semi-evergreen forest adjacent to the municipality of Cárdenas. It has lacustrine areas and land suitable for plantation agriculture and livestock, as well as representative areas of usable forest resources.

Most of the surface is classified as gleysols, which are soils with a generally clayey or loamy texture that present moisture problems due to poor drainage. Land use is divided as follows: 35% is agricultural, 57% is livestock, 1% forestry, 7% for urban areas, bodies of water and unproductive areas.

Tamaulipas State

The state of Tamaulipas is located in the northeast of the country. The relief of the State is mainly made up of large plains that extend along the coast and penetrate inland. The average annual temperature of the State of Tamaulipas is 23.5°C. The average state precipitation is 780 mm per year. The rains occur in the summer, during the months of June to September. 27.8% of the state surface is covered by agricultural areas, 25.3% by scrub, 22% grassland, 10.5% by jungle, 8% by forest, and the remaining 6.4% by other types of vegetation, bodies of water and urban areas. The main agricultural crops are corn, sorghum, soybeans and sugar cane.

Municipality of El Mante

The municipality is in the southern portion of the state of Tamaulipas in the Guayalejo or Tamesí river basin. To the west El Mante is the Sierra de Cucharas, which delineates the limit of the municipality and has a maximum height 800 meters above sea level. The rest of the municipality has a uniform relief with elevations ranging between 15 and 90 meters above sea level. The region has an extreme semi-dry climate, with average temperatures of 40° to 46° C in the months of June and July, as well as minimum temperatures of 4° to 26° C in the months of November and precipitation that reaches 1,000 millimeters. The land use is fundamentally agricultural and livestock.

Municipality of Gonzalez

The municipality is located in the south of the state of Tamaulipas. The predominant climate is subhumid, with an average annual temperature of 25°C, and precipitation of 850 millimeters. The municipality has an extensive area for raising cattle, land dedicated to agriculture and forestry production. The climate favors the exploitation of fruit trees. The highest point of the municipality is represented by the Bernal de

Horcasitas hill with a height of 1,116 meters above sea level and which is part of the shield of the state of Tamaulipas due to its geological appeal.

1.14 Compliance with Laws, Statutes and Other Regulatory Frameworks

The laws and regulations that applied for the XiCO2e: Mexican Reforestation Project are described below:

National Legislation

The article 27 of the National Constitution establishes that the lands and waters included within the boundaries of the national territory belong primarily to the country. The Nation has the right to transfer the domain of the lands to private individuals, constituting private property.

The National Climate Change Strategy published in 2013, establishes in its strategic axis M4, to promote better agricultural and forestry practices to increase and preserve natural carbon sinks, recognizing that forests are important carbon reservoirs.

General Law of Climate Change

The General Law of Climate Change was published in 2012 and in its article 26, it states the principle of sustainability in the exploitation or use of ecosystems and the natural elements that integrate them. In addition, it establishes the co-responsibility between the State and society in general, to implement actions to mitigate and adapt to the adverse effects of climate change.

Its article 31 states that the national climate change mitigation policy shall include, through planning, policy and economic instruments, a diagnosis, planning, measurement, monitoring, reporting, verification and evaluation of national emissions for the gradual achievement of specific emission reduction targets, by sector and taking as a reference the baseline scenarios and baselines by sector.

Article 32 establishes that the national mitigation policy will be implemented based on the principle of gradualism, promoting the strengthening of national capacities for the mitigation of emissions, prioritizing the sectors with the greatest reduction potential until reaching those that represent the highest costs, in addition to complying with international commitments. The activities that involve or transfer a cost to the private sector may be implemented through national capacity building on a voluntary basis.

Article 33 states the objectives of public policies for mitigation including the reduction of national emissions, through policies and programs that promote the transition to a sustainable, competitive and low-carbon economy, including market instruments, incentives and other alternatives. Moreover, to promote the alignment and of programs, policies and actions to mitigate and reverse deforestation and degradation of forest ecosystems.

At local level, article 34 of General Law of Climate Change states that federal entities and municipalities will promote the design and development of mitigation policies and actions associated with the corresponding sectors. Within this framework, the reduction of emissions and carbon sequestration in the agriculture sector, forests and other land uses, and maintenance and increase of carbon sinks are

considered. Also, it remarks the aim of slowing and reversing deforestation and degradation of forest ecosystems.

General Law of Sustainable Forest Development

The main regulation in Mexico related to forestry projects is the General Law for Sustainable Forest Development - “Ley General del Desarrollo Forestal Sustentable”. The objective of this law is to regulate and promote the conservation, protection, restoration, management, cultivation and use of forest ecosystems and their resources in the country. The national institution in charge of the approval of the project activity is the Ministry of Environment and Natural Resources (SEMARNAT).

In its article 3, the Law indicates as main objectives: to promote sustainable forest management to maintain and increase carbon stocks, reduce emissions from deforestation and forest degradation, as well as reduce vulnerability and strengthen resilience and adaptation to climate change. In its article 32, it establishes the contribution to carbon sequestration as one of the mandatory criteria for environmental and silvicultural forestry policy.

In addition, article 53 states that Official Mexican Standards on forestry and soil matters will be issued to promote the welfare of the population and the conservation, protection, production, use or restoration of forest resources and their ecosystems.

The Regulatory Document of the Law, establishes that for the all forest plantations with a surface equal or less than 800 hectares, it is not necessary to develop an environmental impact assessment, the project developer only needs to submit a written notice for forest planting and then SEMARNAT will issue a proof of registration.

1.15 Participation under Other GHG Programs

1.15.1 Projects Registered (or seeking registration) under Other GHG Program(s)

The project is not registered or seeking registration under other GHG Programs.

1.15.2 Projects Rejected by Other GHG Programs

The project has not been rejected by any other GHG programs.

1.16 Other Forms of Credit

1.16.1 Emissions Trading Programs and Other Binding Limits

Does the project reduce GHG emissions from activities that are included in an emissions trading program or any other mechanism that includes GHG allowance trading?

Yes

No

1.16.2 Other Forms of Environmental Credit

Has the project sought or received another form of GHG-related credit, including renewable energy certificates?




 Yes

 No


1.17 Sustainable Development Contributions

The National Development Plan of Mexico (NDP) (2019-2024)² prioritizes economic and social development with an emphasis on infrastructure, policies to fight against poverty and corruption, promote local development and improve social services including health. Furthermore, the Mexican Government stated its commitment in promoting the sustainable development goals through the NDP. Some of the strategies included in the NDP are geared towards addressing the well-being of the communities and balancing them with environmental safeguards and protection. Below are some of the sustainable development goals (SDGs) that are being considered in the NDP and are also linked to the project's contributions (Table 2).

Table 2. Contribution of the project to the Sustainable Development Goals.

| SDG | Name | Contribution |
|---|---------------------------------|---|
|  | No poverty | The project most important social impact is to create quality jobs that can change the quality of life of its employees. The reforestation plantations employ mostly people from the local communities where the project activities are implemented. |
|  | Decent work and economic growth | Related to the provision of local employment that addresses poverty reduction is the provision of decent work opportunities to the local communities through the reforestation project. |
|  | Climate action | The project activities contribute directly to addressing climate change. Through the reforested areas, the trees capture CO ₂ from the atmosphere and increases the resilience of the previously degraded areas. The presence of trees also contributes to responsible soil management that reduces further erosion. |

² Plan Nacional de Desarrollo 2019-2024

| SDG | Name | Contribution |
|---|--------------|--|
|  | Life on Land | <p>Protected areas are established with enrichment with native species, protection of streams and water tributaries.</p> <p>The plantations manage a good undergrowth forest that protects both the soil and the fauna that passes through it.</p> |

1.18 Additional Information Relevant to the Project

Leakage Management

Not applicable for project listing document

Commercially Sensitive Information

Not applicable for project listing document

Further Information

Not applicable for project listing document

2 SAFEGUARDS

2.1 No Net Harm

Not applicable for project listing document

2.2 Local Stakeholder Consultation

Not applicable for project listing document

2.3 Environmental Impact

Not applicable for project listing document

2.4 Public Comments

Not applicable for project listing document

2.5 AFOLU-Specific Safeguards

Not applicable for project listing document

3 APPLICATION OF METHODOLOGY

3.1 Title and Reference of Methodology

The CDM consolidated methodology AR-ACM0003: Afforestation and reforestation of lands except for wetlands – Version 02.0 was applied, as well as the following tools:

- Combined tool to identify the baseline scenario and demonstrate additionality in A/R CDM project activities (Version 01).
- Estimation of carbon stocks and change in the carbon stocks of trees and shrubs in A/R CDM project activities (Version 04.2); and
- Tool for estimation of the change in soil organic carbon stocks due to the implementation of A/R CDM project activities (Version 01.1.0).

3.2 Applicability of Methodology

This section demonstrates that the methodology and previously listed tools are applicable to the project.

Applicability conditions of the Methodology

The CDM approved Methodology AR-ACM0003 Version 02.0 is applicable to the Uumbal reforestation project in Mexico since it meets the applicability criteria as described in Table 3.

Table 3. Compliance to the applicability conditions prescribed by the methodology.

| Applicability Condition | Compliance |
|---|--|
| The land subject to the project activity does not fall in wetland category | Project activities will not take place in wetlands. This is demonstrated through the land eligibility analysis in which wetlands and water bodies were excluded from project boundary. |
| Soil disturbance attributable to the project activity does not cover more than 10 per cent of area in each of the following types of land, when these lands are included within the project boundary: <ul style="list-style-type: none"> • Land containing organic soils; • Land which, in the baseline, is subjected to land-use and | The project activities are not taking place in organic soils. The baseline before the project start date was grasslands without any inputs. In the absence of the project activity, the baseline is expected to remain as unmanaged grasslands (without receiving inputs such as listed in appendices 1 and 2 to the methodology AR-ACM003). Such grasslands under tropical conditions have less carbon compared to plantations and forest cover. Therefore, it is expected for soil |

| | |
|---|--|
| management practices and receives inputs listed in appendices 1 and 2 to the methodology AR-ACM003. | organic carbon to increase less in the absence of the project activity relative to the baseline. |
|---|--|

Applicability conditions of the Tools

Table 4. Compliance to the applicability conditions prescribed by the tools applied.

| Tool | Applicability Condition | Compliance |
|---|--|--|
| Combined tool to identify the baseline scenario and demonstrate additionality in A/R CDM project activities (Version 01). | <p>a. AFOLU activities the same or similar to the proposed project activity on the land within the proposed project boundary performed with or without being registered as the VCS AFOLU project shall not lead to violation of any applicable law even if the law is not enforced.</p> <p>b. The use of this tool to determine additionality requires the baseline methodology to provide for a stepwise approach justifying the determination of the most plausible baseline scenario. Project proponent(s) proposing new baseline methodologies shall ensure consistency between the determination of a baseline scenario and the determination of additionality of a project activity.</p> | <p>a. The reforestation activities won't lead to the violation of any applicable law.</p> <p>b. Not Applicable</p> |
| Estimation of carbon stocks and change in the carbon stocks of trees and shrubs in A/R | This tool has no internal applicability conditions | Not Applicable |

| | | |
|--|---|---|
| CDM project activities (Version 04.2). | | |
| Tool for estimation of the change in soil organic carbon stocks due to the implementation of A/R CDM project activities (Version 01.1.0) | <p>This tool is applicable when the areas of land, the baseline scenario, and the project activity meet the following conditions:</p> <p>a. The areas of land to which this tool is applied: i) Do not fall into wetland category; or ii) Do not contain organic soils as defined in Annex A: glossary. of the IPCC GPG LULUCF 2003; iii) Are not subject to any of the land management practices and application of inputs as listed in the Tables 1 and 2 of the tool.</p> <p>b. The A/R CDM project activity meets the following conditions: (i) Litter remains on site and is not removed in the A/R CDM project activity; and (ii) Soil disturbance attributable to the A/R CDM project activity, if any, is: In accordance with appropriate soil conservation practices, e.g. follows the land contours; limited to soil disturbance for site preparation before planting and such disturbance is not repeated in less than twenty years.</p> | <p>a. Already reviewed when assessing the methodology applicability.</p> <p>b. Litter remain on site and will not be removed.</p> |

3.3 Project Boundary

Not applicable for project listing document

3.4 Baseline Scenario

Not applicable for project listing document

3.5 Additionality

Not applicable for project listing document

3.6 Methodology Deviations

Not applicable for project listing document

4 QUANTIFICATION OF GHG EMISSION REDUCTIONS AND REMOVALS

4.1 Baseline Emissions

Not applicable for project listing document

4.2 Project Emissions

Not applicable for project listing document

4.3 Leakage

Not applicable for project listing document

4.4 Net GHG Emission Reductions and Removals

Not applicable for project listing document

5 MONITORING

5.1 Data and Parameters Available at Validation

Not applicable for project listing document

5.2 Data and Parameters Monitored

Not applicable for project listing document

5.3 Monitoring Plan

Not applicable for project listing document

APPENDIX

Not applicable for project listing document